

X:\WPSD\White Plains Central School District\10801\WPSD 2007 - George Washington Toilet Room Renovations\102-2006-2-ADD-Con-Drawings\Legend.dwg Last Modified: Oct 01, 2021 - 10:35am Plotted on: Nov 02, 2021 - 11:45am By: dmanan

ABBREVIATIONS	
AFF	ABOVE FINISHED FLOOR
BCU	BUILDING CONTROL UNIT
BTU	BRITISH THERMAL UNIT
CFH	CUBIC FEET PER HOUR
CFM	CUBIC FEET PER MINUTE
CLG	CEILING
COMM.	COMMUNICATION
CV	CONTROL VALVE
(D)	DEMOLISH
DB	DRY BULB
DCV	DEMAND CONTROLLED VENTILATION
DEG. F	DEGREES FAHRENHEIT
DIA	DIAMETER
DX	DIRECT EXPANSION
'E'	ELECTRICAL CONTRACTOR
(E)	EXISTING
EA	EACH
EAT	ENTERING AIR TEMPERATURE
EER	ENERGY EFFICIENCY RATING
ESP	EXTERNAL STATIC PRESSURE
FAI	FRESH AIR INTAKE
FD	FLOOR DRAIN
FLA	FULL LOAD AMPS
FT. H2O	FEET OF WATER
'G'	GENERAL CONSTRUCTION CONTRACTOR
GPM	GALLONS PER MINUTE
GPH	GALLONS PER HOUR
H	HEIGHT
'H'	HVAC CONTRACTOR
HP	HORSEPOWER
IN.	INCHES
IN. W.C. (W.G.)	INCHES WATER COLUMN (WATER GAUGE)
KW	KILOWATTS
L	LENGTH
LAT	LEAVING AIR TEMPERATURE
LBS	POUNDS
LCD	LIQUID CRYSTAL DISPLAY
LDB	LEAVING DRY BULB TEMPERATURE
LWB	LEAVING WET BULB TEMPERATURE
LWT	LEAVING WATER TEMPERATURE
M	METER
MAX	MAXIMUM
MBH	1,000 BTU PER HOUR
MCA	MINIMUM CIRCUIT AMPACITY
MIN	MINIMUM
MNF	MANUFACTURER
N.C.	NORMALLY CLOSED
N.O.	NORMALLY OPEN
NFPA	NATIONAL FIRE PROTECTION ASSOCIATION
NPT	NATIONAL PIPE THREAD
NTS	NOT TO SCALE
OAI	OUTDOOR AIR INTAKE
OD	OUTER DIAMETER
OED	OPEN ENDED DUCT
'P'	PLUMBING CONTRACTOR
PD	PRESSURE DROP
PSIG	LBS / SQUARE INCH (GAUGE PRESSURE)
RD	ROOF DRAIN
RPM	REVOLUTIONS PER MINUTE
RPZ	REDUCED PRESSURE ZONE
SAT	SUPPLY AIR TEMPERATURE
SEER	SEASONAL ENERGY EFFICIENCY RATING
TEMP	TEMPERATURE
TG	TRANSFER GRILLE
TYP	TYPICAL
VFD	VARIABLE FREQUENCY DRIVE
W	WIDTH
WB	WET BULB
WMS	WIRE MESH SCREEN

SYMBOL	ABBREV	DESCRIPTION
		DUCTWORK BRANCH CONNECTION
	VD	VOLUME DAMPER
	CD	ROUND FACE SUPPLY DIFFUSER
	SEE AIR DEVICE SCHEDULE	SQUARE FACE SUPPLY DIFFUSER
	SEE AIR DEVICE SCHEDULE	BOTTOM RETURN OR EXHAUST GRILLE/REGISTER
	FC	FLEXIBLE CONNECTION
		TURNING VANES
		RECTANGULAR TO ROUND TRANSITION
	AL	ACOUSTICAL LINING
		END CAP
	SEE AIR DEVICE SCHEDULE	SUPPLY DIFFUSER WITH DIRECTIONAL FLOW (SOLID HATCH INDICATES BLANK OFF PANEL)
		SUPPLY DUCT DROP (TURN DOWN)
		RETURN/EXHAUST DUCT DROP (TURN DOWN)
		SUPPLY DUCT RISE
		RETURN/EXHAUST DUCT RISE
	DSD	DUCT SMOKE DETECTOR
	MD	MOTORIZED DAMPER WITH ACTUATOR
	AD	ACCESS DOOR
	FD/AD	FIRE DAMPER WITH ACCESS DOOR
	FSD/AD	FIRE SMOKE DAMPER WITH ACCESS DOOR
	FAN	FAN
		WORK TO BE REMOVED
		POINT OF DISCONNECTION FROM EXISTING
		POINT OF CONNECTION TO EXISTING

SYMBOL	ABBREV	DESCRIPTION
	C	CARBON MONOXIDE SENSOR
	T	THERMOSTAT
	S	DIGITAL TEMPERATURE SENSOR
	H	HUMIDITY SENSOR
	CO2	CARBON DIOXIDE SENSOR
	P	PRESSURE SENSOR

SYMBOL	ABBREV	DESCRIPTION
		NEW WORK
		PIPING DOWN/ PIPING UP
		BALL VALVE WITH HOSE END CONNECTION
	TH	THERMOMETER
	U	UNION
	FPC	FLEXIBLE PIPE CONNECTION
		DIRECTION OF FLOW
	PSR	PRESSURE SAFETY AND RELIEF VALVE
	PRV	PRESSURE REDUCING VALVE
	BV	BALL VALVE
	BA	BALANCING VALVE
	BFV	BUTTERFLY VALVE
		TEMPERATURE SENSOR WITH THERMOWELL
	GA	GATE VALVE
	GB	GLOBE VALVE
	AV	AUTOMATIC AIR VENT
	CV	2-WAY ELECTRONIC CONTROL VALVE
	CV	3-WAY ELECTRONIC CONTROL VALVE
	CV	2-WAY PNEUMATIC CONTROL VALVE
	CV	3-WAY PNEUMATIC CONTROL VALVE
	STR	STRAINER WITH BLOW OFF VALVE WITH HOSE END CONNECTION
	FD	FLOOR DRAIN
		AIR SEPARATOR
	F&T	STEAM TRAPS (INDICATE TYPE)
	CH	CHECK VALVE
	PG	PRESSURE GAUGE WITH GAUGE COCK
	RED	REDUCER
	CO	CLEANOUT END CAP
		PIPE GUIDE
		PIPE ANCHOR
		CAPPED PIPE
		PUMP
		WORK TO BE REMOVED
		POINT OF DISCONNECTION FROM EXISTING
		POINT OF CONNECTION TO EXISTING
	TDV	TRIPLE DUTY VALVE

#### GENERAL NOTES

- PROVIDE ALL MATERIALS AND EQUIPMENT AND PERFORM ALL LABOR REQUIRED TO INSTALL COMPLETE AND OPERABLE MECHANICAL SYSTEMS AS INDICATED ON THE DRAWINGS, AS SPECIFIED AND AS REQUIRED BY 2020 MECHANICAL CODE OF NEW YORK STATE.
- THE CONTRACTOR, BY PRESENTING THEIR BID FOR THE WORK, REPRESENTS THAT HE/SHE HAS INSPECTED THE SITE AND IS COMPLETELY FAMILIAR WITH THE SCOPE OF WORK AND ALL FIELD CONDITIONS RELATED TO, AND AFFECTING THE WORK AND ITS PERFORMANCE. EXCEPTIONS AFFECTING THE WORK AND ITS PERFORMANCE, OR CONFLICTS BETWEEN FIELD CONDITIONS, SHALL BE BROUGHT TO THE ATTENTION OF THE ARCHITECT PRIOR TO THE SUBMISSION OF BIDS.
- PERFORM ALL WORK IN ACCORDANCE WITH THE PLUMBING CODE, FIRE CODE, MECHANICAL CODE, ENERGY CONSERVATION CONSTRUCTION CODE, AND FUEL GAS CODE OF NEW YORK STATE AND THE REQUIREMENTS OF THE LOCAL AUTHORITIES HAVING JURISDICTION.
- COMPLY WITH THE NATIONAL ELECTRIC CODE AND THE REQUIREMENTS OF DIVISION 26 FOR ALL ELECTRICAL INSTALLATIONS.
- FIRE STOP ALL OPENINGS IN FIRE RATED CONSTRUCTION FOR PIPING, DUCTWORK, CONDUIT, ETC. PROVIDE FIRE DAMPERS AND ACCESS DOORS IN ALL OPENINGS IN FIRE RATED FLOORS, PARTITIONS, AND WALLS FOR DUCTWORK AS PER THE MECHANICAL CODE OF NEW YORK STATE.
- DO NOT SCALE DRAWINGS. DRAWINGS FOR HVAC WORK ARE DIAGRAMMATIC AND ARE INTENDED TO CONVEY SCOPE AND GENERAL ARRANGEMENT ONLY. THE LOCATIONS OF ALL ITEMS SHOWN ON THE DRAWINGS OR CALLED FOR IN THE SPECIFICATIONS THAT ARE NOT DEFINITELY FIXED BY DIMENSIONS ARE APPROXIMATE. COORDINATE CONTRACT DOCUMENTS, PROJECT REQUIREMENTS, WORK OF OTHERS, AND EQUIPMENT AND MATERIALS PURCHASED WITH FIELD DIMENSIONS. INSTALL ALL EQUIPMENT AS PER MANUFACTURERS REQUIREMENTS TO PROVIDE PROPER CLEARANCE FOR INSTALLATION, OPERATION, AND MAINTENANCE. CONTRACTORS INTENDED MEANS AND METHODS OF INSTALLATION AND CONTRACTOR'S FABRICATED ITEMS SHALL ENSURE A PROPER "FIT" AND INSTALLATION. BRING ANY CONFLICTS TO THE ATTENTION OF THE ARCHITECT/ENGINEER DURING THE SUBMITTAL PHASE FOR RESOLUTION PRIOR TO PURCHASING ANY EQUIPMENT.
- MAINTAIN MAXIMUM HEADROOM AND SPACE CONDITIONS AT ALL POINTS, WHERE HEADROOM AND SPACE CONDITIONS APPEAR INADEQUATE. NOTIFY THE ARCHITECT/ENGINEER PRIOR TO PROCEEDING WITH INSTALLATION. MAINTAIN A MINIMUM OF 6'-8" CLEARANCE FROM FINISHED FLOOR TO UNDERSIDE OF PIPES, DUCTS, CONDUITS, SUSPENDED EQUIPMENT, ETC., THROUGHOUT ACCESS ROUTES IN MECHANICAL ROOMS.
- FIELD VERIFY AND COORDINATE ALL DUCT AND PIPING DIMENSIONS BEFORE FABRICATION. MAKE MODIFICATIONS IN THE LAYOUT AS NEEDED TO PREVENT CONFLICT WITH WORK OF OTHER TRADES OR FOR PROPER EXECUTION OF THE WORK. OBTAIN THE APPROVAL OF THE ARCHITECT/ENGINEER FOR MODIFICATIONS.
- PROVIDE PRODUCTS OF ONE MANUFACTURER WHERE TWO OR MORE ITEMS OF THE SAME TYPE OF MATERIAL OR EQUIPMENT IS REQUIRED.
- INSTALL ALL EQUIPMENT AND APPURTENANCES IN ACCORDANCE WITH MANUFACTURER'S RECOMMENDATIONS, CONTRACT DOCUMENTS, AND APPLICABLE CODES AND REGULATIONS. REFER TO DETAILS FOR ADDITIONAL PIPING AND EQUIPMENT INSTALLATION REQUIREMENTS.
- LOCATE ALL TEMPERATURE, PRESSURE, AND FLOW MEASURING DEVICES IN ACCESSIBLE LOCATIONS WITH STRAIGHT SECTION OF PIPE OR DUCT UP- AND DOWNSTREAM AS RECOMMENDED BY THE MANUFACTURER TO ENSURE MANUFACTURER CERTIFIED ACCURACY.
- COORDINATE ALL EQUIPMENT CONNECTIONS WITH MANUFACTURER'S CERTIFIED DRAWINGS. COORDINATE AND PROVIDE ALL PIPING AND DUCT TRANSITIONS REQUIRED FOR FINAL CONNECTIONS TO EQUIPMENT.
- COORDINATE LOCATIONS AND SIZES OF ALL FLOOR, WALL, AND ROOF OPENINGS WITH ALL OTHER TRADES. COORDINATE ALL PIPING AND EQUIPMENT SUPPORTED FROM STRUCTURE WITH GENERAL CONSTRUCTION WORK.
- COORDINATE INSTALLATION OF SUPPLY AND RETURN GRILLES WITH INSTALLATION OF FINISHED CEILINGS.
- COMPLETE ALL PRESSURE TESTS BEFORE ANY MECHANICAL EQUIPMENT, DUCTWORK, OR PIPING INSULATION IS APPLIED.
- TESTING, ADJUSTING, AND BALANCING AGENCY SHALL BE A MEMBER OF THE ASSOCIATED AIR BALANCE COUNCIL (AABC) OR THE NATIONAL ENVIRONMENTAL BALANCING BUREAU (NEBB). PERFORM ALL TESTING, ADJUSTING, AND BALANCING IN ACCORDANCE WITH THE SPECIFICATIONS.
- MAKE ALL ATTACHMENTS TO JOISTS, TRUSSES, OR JOIST GIRDERS AT PANEL POINTS. PROVIDE BEAM CLAMPS MEETING MSS STANDARDS. THE USE OF C-CLAMPS IS NOT PERMITTED.
- PROVIDE CONCRETE PADS A MINIMUM OF 6 INCHES HIGH FOR ALL FLOOR MOUNTED EQUIPMENT. EXTEND PAD 4 INCHES BEYOND THE EQUIPMENT ON ALL SIDES.
- INTERNALLY LINE ALL SUPPLY AND RETURN DUCTWORK WITHIN 20 FEET UPSTREAM AND DOWNSTREAM OF FANS WITH 1" THICK INSULATION. INTERNALLY LINED DUCTWORK MEETING THIS REQUIREMENT SHALL ALSO BE PROVIDED WITH EXTERNALLY APPLIED INSULATION AS REQUIRED BY THE SPECIFICATIONS. SEE SPECIFICATION SECTION 230719 FOR ADDITIONAL REQUIREMENTS.
- PROVIDE TRAPPED DRAIN PIPING FROM DRAIN PANS OF ALL COOLING COILS, FANS, AND OTHER ACTIVE DRAINS EXPOSED TO SYSTEM AIR STREAM. PROVIDE TRAP AT CONNECTION. WATER SEAL DEPTH 1 INCH GREATER THAN UNIT OPERATING PRESSURE. DIRECT DRAINS TO NEAREST FLOOR DRAIN, MOP SINK, OR OTHER LOCATION APPROVED BY THE ARCHITECT/ENGINEER.
- INSTALL PIPING, DUCTWORK, AND CONDUIT CONCEALED IN AREAS HAVING HUNG CEILINGS AND/OR FURRED SPACES UNLESS OTHERWISE INDICATED ON THE DRAWINGS.

#### WORK IN EXISTING AREAS

- EXISTING CONDITIONS, INCLUDING EQUIPMENT, DUCT AND PIPE SIZES AND LOCATIONS, INDICATED ON THE DRAWINGS ARE DIAGRAMMATIC. CONFIRM ALL EXISTING CONDITIONS PRIOR TO PROCEEDING WITH THE WORK.
- CUT AND ROUGH PATCH EXISTING CONSTRUCTION AS REQUIRED FOR THE PERFORMANCE OF THE WORK. FINISH PATCHING AND FLASHING REQUIREMENTS ARE SHOWN ON THE ARCHITECTURAL DRAWINGS. PERFORM ALL CUTTING AND PATCHING WORK IN A MANNER SUCH THAT ANY EXISTING WARRANTIES/GUARANTEES ARE NOT VOIDED. USE QUALIFIED PERSONNEL IN PERFORMANCE OF THE WORK.

#### CONTRACT 'H' SCOPE NOTES (HVAC OR MECHANICAL)

- ALL REFERENCES TO OTHER CONTRACTS AND DIVISIONS INCLUDING BUT NOT LIMITED TO, 'G', 'P', 'E', AND DIVISION 26, ARE ALL TO BE BID AS PART OF THE 'H' SCOPE AND BID FOR THIS PROJECT.
- PROVIDE ALL LOUVERS FOR INSTALLATION BY CONTRACT 'G'. SUBMIT LOUVER COLOR AND CONFIGURATION TO THE ARCHITECT/ENGINEER FOR APPROVAL.
- INSTALL SMOKE DETECTORS IN DUCTWORK FOR AIR HANDLING UNITS RATED AT 2,000 CFM OR GREATER. SMOKE DETECTOR SUPPLY AND WIRING IS PART OF CONTRACT 'E'.
- FURNISH AND INSTALL ALL NECESSARY CONTROL WIRING, CONDUIT, AND ACCESSORIES AS REQUIRED TO PROVIDE FULLY FUNCTIONING SYSTEMS AND SEQUENCES OF OPERATION.
- FURNISH ALL LINTELS FOR DUCT AND PIPE PENETRATIONS IN INTERIOR MASONRY WALLS FOR INSTALLATION BY CONTRACT 'G'.
- FURNISH ALL SLEEVES FOR PIPE AND CONDUIT FLOOR, WALL, PARTITION, AND ROOF PENETRATIONS FOR INSTALLATION BY CONTRACT 'G'.
- FURNISH ALL CURBS FOR ALL ROOF MOUNTED EQUIPMENT AND DUCT PENETRATIONS FOR INSTALLATION BY CONTRACT 'G'.
- REMOVE CHASE ENCLOSURE COVER WHEN PERFORMING WORK IN ANY CHASE, AND REINSTALL THE CHASE ENCLOSURE COVER WHEN WORK IS COMPLETE.
- PERFORM ALL CUTTING AND ROUGH PATCHING AS REQUIRED IN THE EXECUTION OF THE WORK. FINISH PATCHING AND FLASHING IS PART OF CONTRACT 'G'.

#### LEGENDS/ABBREVIATIONS NOTES

- ABBREVIATIONS AND SYMBOLS ON THIS SHEET DO NOT DEFINE THE SCOPE OF WORK.

H2

M

architects  
+  
engineers

2700 Westchester Ave., Suite 415  
Purchase, NY 10577  
914.358.5623 • www.h2m.com

CONSULTANTS:

MARK	DATE	DESCRIPTION
-	11-03-21	FINAL BID SET

DESIGNED BY: JSK

DRAWN BY: JSK

CHECKED BY:

REVIEWED BY:

PROJECT NO.: WPSD 2007

DATE: NOVEMBER 2021

SCALE: AS SHOWN

CLIENT

White Plains City  
School District

100 Orchard Street  
White Plains NY, 10604

66-22-00-01-0-009-016

CONTRACT

CONTRACT G  
GENERAL CONSTRUCTION

STATUS

FINAL BID DOCUMENT

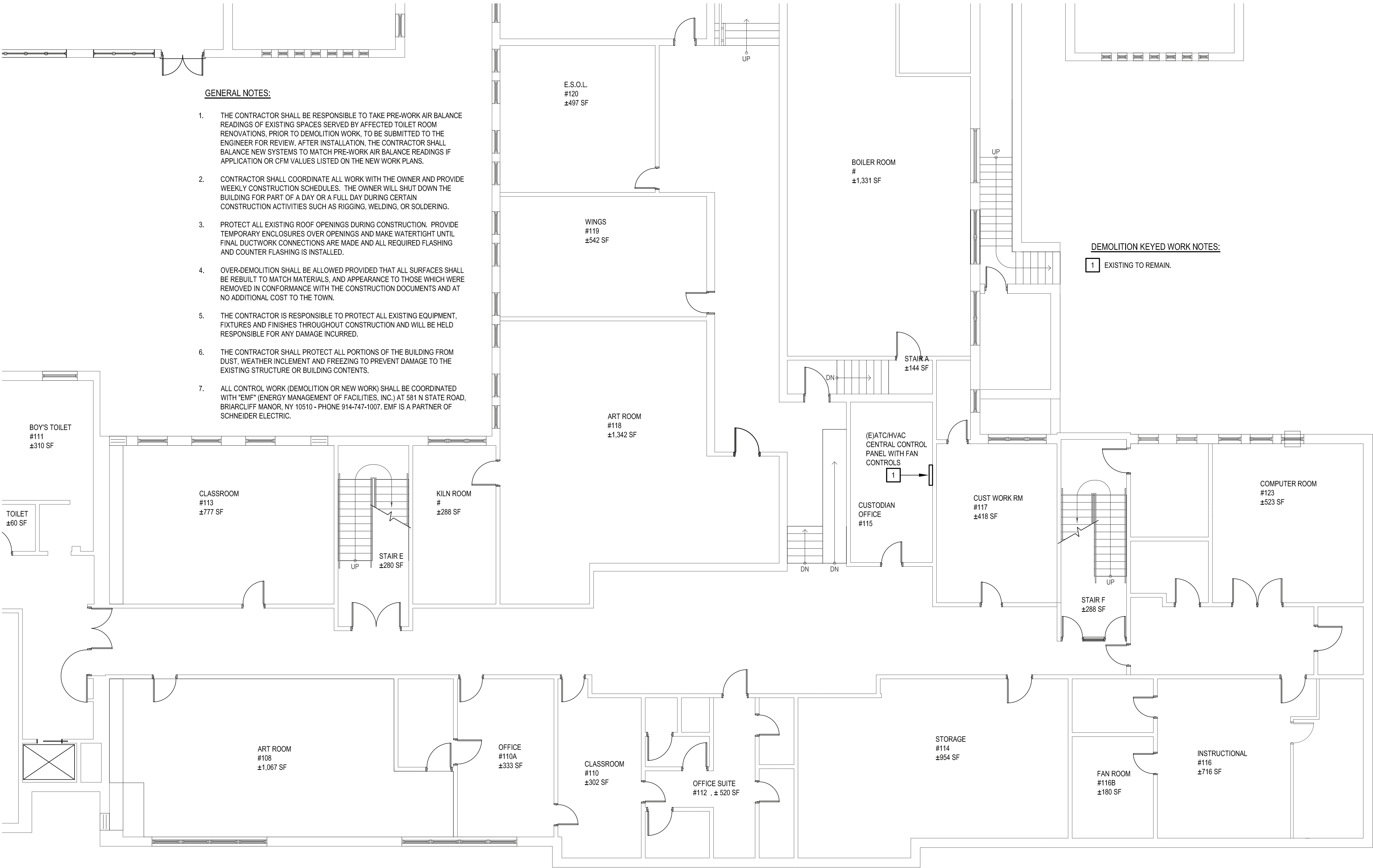
SHEET TITLE

MECHANICAL  
LEGENDS AND SCHEDULES

DRAWING No.

M 001.00





GENERAL NOTES:

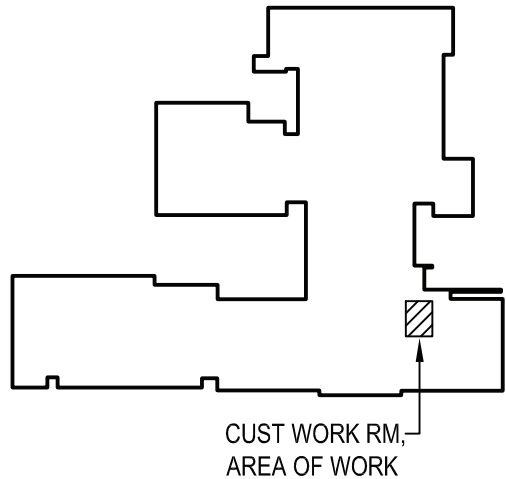
1. THE CONTRACTOR SHALL BE RESPONSIBLE TO TAKE PRE-WORK AIR BALANCE READINGS OF EXISTING SPACES SERVED BY AFFECTED TOILET ROOM RENOVATIONS, PRIOR TO DEMOLITION WORK, TO BE SUBMITTED TO THE ENGINEER FOR REVIEW. AFTER INSTALLATION, THE CONTRACTOR SHALL BALANCE NEW SYSTEMS TO MATCH PRE-WORK AIR BALANCE READINGS IF APPLICATION OR CFM VALUES LISTED ON THE NEW WORK PLANS.
2. CONTRACTOR SHALL COORDINATE ALL WORK WITH THE OWNER AND PROVIDE WEEKLY CONSTRUCTION SCHEDULES. THE OWNER WILL SHUT DOWN THE BUILDING FOR PART OF A DAY OR A FULL DAY DURING CERTAIN CONSTRUCTION ACTIVITIES SUCH AS RIGGING, WELDING, OR SOLDERING.
3. PROTECT ALL EXISTING ROOF OPENINGS DURING CONSTRUCTION. PROVIDE TEMPORARY ENCLOSURES OVER OPENINGS AND MAKE WATERTIGHT UNTIL FINAL DUCTWORK CONNECTIONS ARE MADE AND ALL REQUIRED FLASHING AND COUNTER FLASHING IS INSTALLED.
4. OVER-DEMOLITION SHALL BE ALLOWED PROVIDED THAT ALL SURFACES SHALL BE REBUILT TO MATCH MATERIALS, AND APPEARANCE TO THOSE WHICH WERE REMOVED IN CONFORMANCE WITH THE CONSTRUCTION DOCUMENTS AND AT NO ADDITIONAL COST TO THE TOWN.
5. THE CONTRACTOR IS RESPONSIBLE TO PROTECT ALL EXISTING EQUIPMENT, FIXTURES AND FINISHES THROUGHOUT CONSTRUCTION AND WILL BE HELD RESPONSIBLE FOR ANY DAMAGE INCURRED.
6. THE CONTRACTOR SHALL PROTECT ALL PORTIONS OF THE BUILDING FROM DUST, WEATHER INCLEMENT AND FREEZING TO PREVENT DAMAGE TO THE EXISTING STRUCTURE OR BUILDING CONTENTS.
7. ALL CONTROL WORK (DEMOLITION OR NEW WORK) SHALL BE COORDINATED WITH "EMF" (ENERGY MANAGEMENT OF FACILITIES, INC.) AT 581 N STATE ROAD, BRIARCLIFF MANOR, NY 10510 - PHONE 914-747-1007. EMF IS A PARTNER OF SCHNEIDER ELECTRIC.

DEMOLITION KEYED WORK NOTES:

1 EXISTING TO REMAIN.

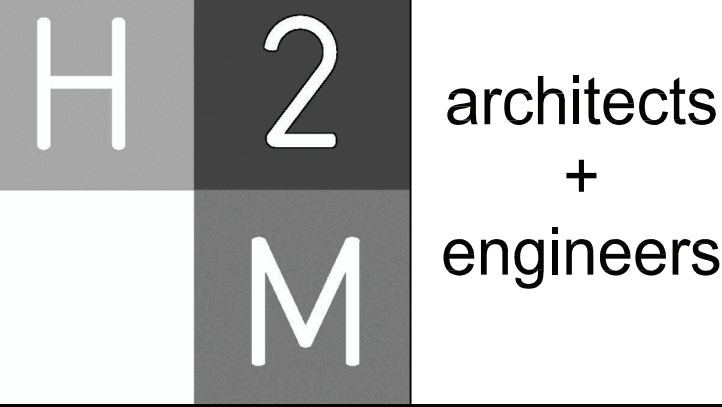
1 Mechanical First Floor Demolition Plan

SCALE: 1/8"=1'-0"



2 Key Plan

SCALE: NTS



2700 Westchester Ave., Suite 415  
Purchase, NY 10577  
914.358.5623 • www.h2m.com

CONSULTANTS:

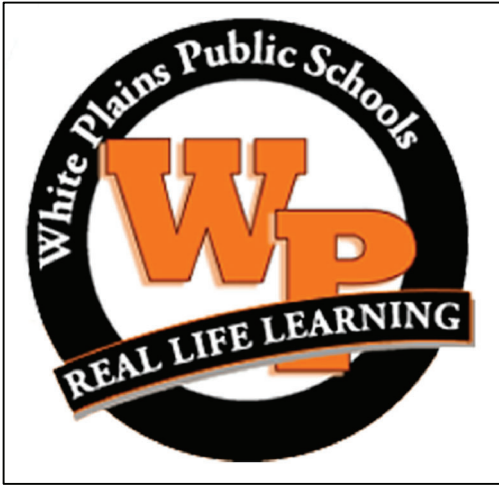
MARK	DATE	DESCRIPTION
-	11-03-21	FINAL BID SET



DESIGNED BY:	DRAWN BY:	CHECKED BY:	REVIEWED BY:
JSK	JSK		
PROJECT NO.:	DATE:	SCALE:	
WPSD 2007	NOVEMBER 2021	AS SHOWN	

CLIENT  
**White Plains City School District**

Toilet Room Renovations at  
the George Washington  
Elementary School



100 Orchard Street  
White Plains NY, 10604

66-22-00-01-0-009-016

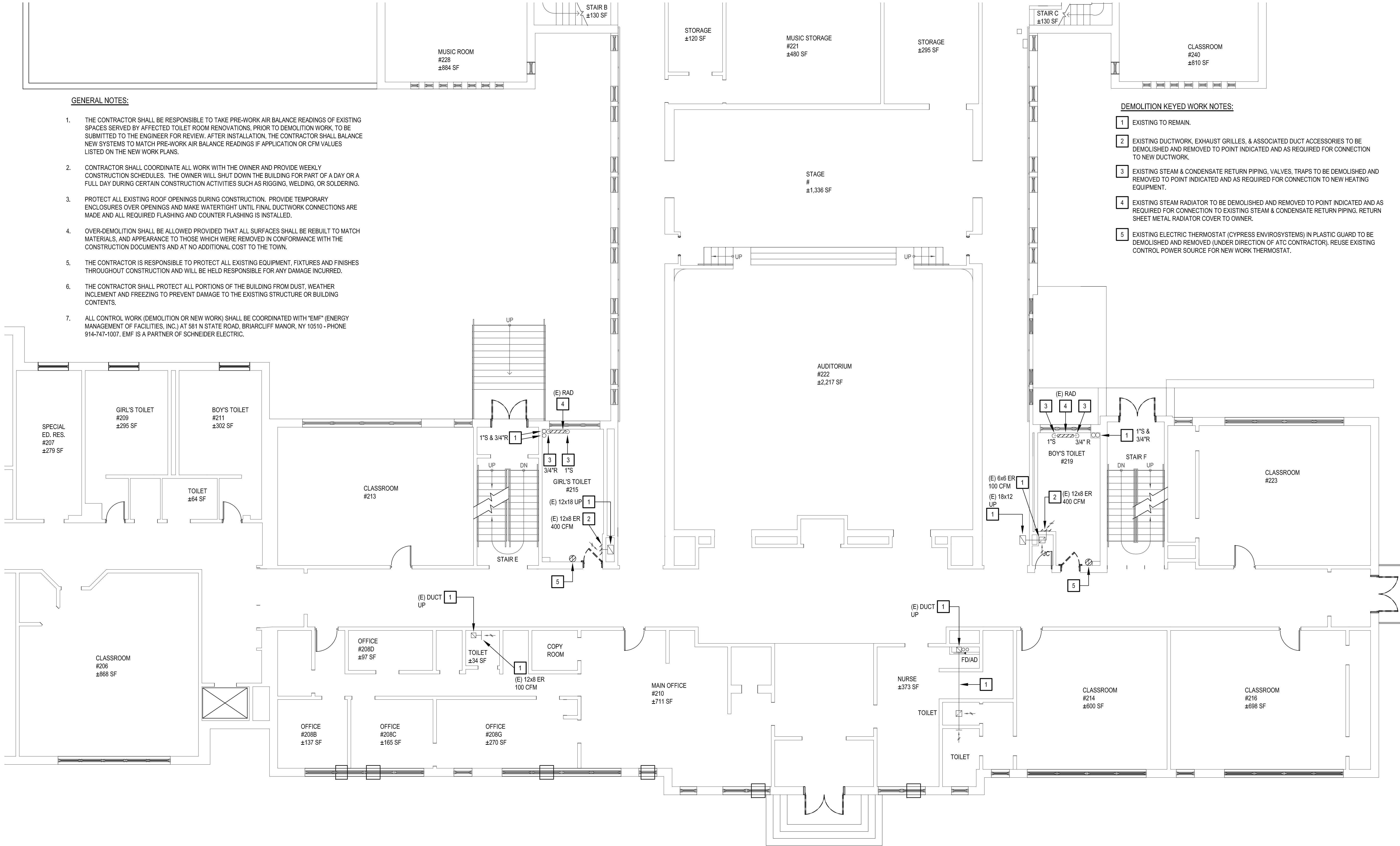
CONTRACT  
**CONTRACT G  
GENERAL CONSTRUCTION**

STATUS  
**FINAL BID DOCUMENT**

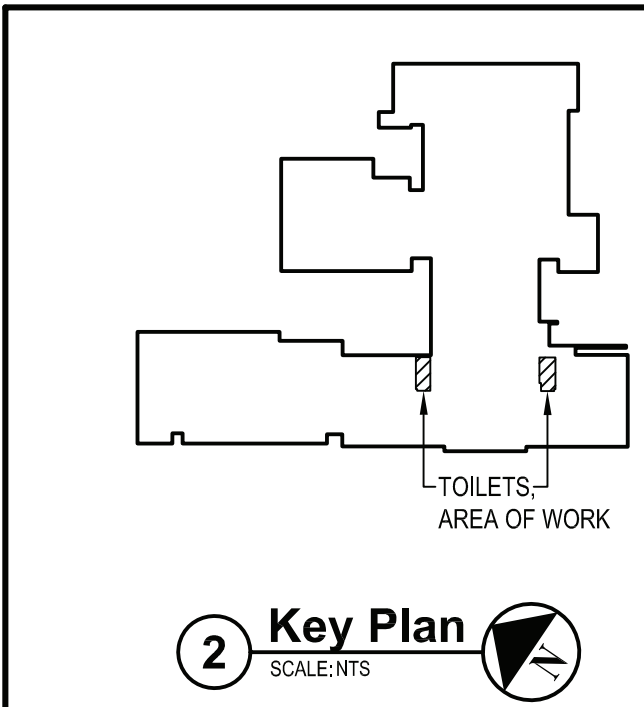
SHEET TITLE  
**MECHANICAL  
DEMOLITION PLAN  
FIRST FLOOR**

DRAWING No.  
**MD 100.00**

X:\WPSD\White Plains Central School District\10901\WPSD 2007 - (George Washington Toilet Room Renovations)\02-BIM\2-ADD\Con-downheadMD 101.00 - 2nd Floor Mech Demo Plan.dwg Last Modified: Oct 01, 2021 - 10:35am Plotted on: Nov 02, 2021 - 11:15am By: fframan



**1 Mechanical Second Floor Demolition Plan**  
SCALE: 1/8"=1'-0"



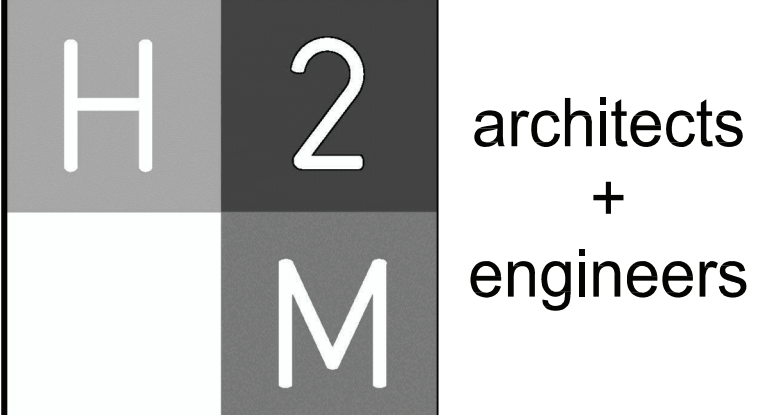
**2 Key Plan**  
SCALE: NTS

**GENERAL NOTES:**

1. THE CONTRACTOR SHALL BE RESPONSIBLE TO TAKE PRE-WORK AIR BALANCE READINGS OF EXISTING SPACES SERVED BY AFFECTED TOILET ROOM RENOVATIONS, PRIOR TO DEMOLITION WORK, TO BE SUBMITTED TO THE ENGINEER FOR REVIEW. AFTER INSTALLATION, THE CONTRACTOR SHALL BALANCE NEW SYSTEMS TO MATCH PRE-WORK AIR BALANCE READINGS IF APPLICATION OR CFM VALUES LISTED ON THE NEW WORK PLANS.
2. CONTRACTOR SHALL COORDINATE ALL WORK WITH THE OWNER AND PROVIDE WEEKLY CONSTRUCTION SCHEDULES. THE OWNER WILL SHUT DOWN THE BUILDING FOR PART OF A DAY OR A FULL DAY DURING CERTAIN CONSTRUCTION ACTIVITIES SUCH AS RIGGING, WELDING, OR SOLDERING.
3. PROTECT ALL EXISTING ROOF OPENINGS DURING CONSTRUCTION. PROVIDE TEMPORARY ENCLOSURES OVER OPENINGS AND MAKE WATERTIGHT UNTIL FINAL DUCTWORK CONNECTIONS ARE MADE AND ALL REQUIRED FLASHING AND COUNTER FLASHING IS INSTALLED.
4. OVER-DEMOLITION SHALL BE ALLOWED PROVIDED THAT ALL SURFACES SHALL BE REBUILT TO MATCH MATERIALS, AND APPEARANCE TO THOSE WHICH WERE REMOVED IN CONFORMANCE WITH THE CONSTRUCTION DOCUMENTS AND AT NO ADDITIONAL COST TO THE TOWN.
5. THE CONTRACTOR IS RESPONSIBLE TO PROTECT ALL EXISTING EQUIPMENT, FIXTURES AND FINISHES THROUGHOUT CONSTRUCTION AND WILL BE HELD RESPONSIBLE FOR ANY DAMAGE INCURRED.
6. THE CONTRACTOR SHALL PROTECT ALL PORTIONS OF THE BUILDING FROM DUST, WEATHER INCLEMENT AND FREEZING TO PREVENT DAMAGE TO THE EXISTING STRUCTURE OR BUILDING CONTENTS.
7. ALL CONTROL WORK (DEMOLITION OR NEW WORK) SHALL BE COORDINATED WITH "EMF" (ENERGY MANAGEMENT OF FACILITIES, INC.) AT 581 N STATE ROAD, BRIARCLIFF MANOR, NY 10510 - PHONE 914-747-1007. EMF IS A PARTNER OF SCHNEIDER ELECTRIC.

**DEMOLITION KEYED WORK NOTES:**

- 1 EXISTING TO REMAIN.
- 2 EXISTING DUCTWORK, EXHAUST GRILLES, & ASSOCIATED DUCT ACCESSORIES TO BE DEMOLISHED AND REMOVED TO POINT INDICATED AND AS REQUIRED FOR CONNECTION TO NEW DUCTWORK.
- 3 EXISTING STEAM & CONDENSATE RETURN PIPING, VALVES, TRAPS TO BE DEMOLISHED AND REMOVED TO POINT INDICATED AND AS REQUIRED FOR CONNECTION TO NEW HEATING EQUIPMENT.
- 4 EXISTING STEAM RADIATOR TO BE DEMOLISHED AND REMOVED TO POINT INDICATED AND AS REQUIRED FOR CONNECTION TO EXISTING STEAM & CONDENSATE RETURN PIPING, RETURN SHEET METAL RADIATOR COVER TO OWNER.
- 5 EXISTING ELECTRIC THERMOSTAT (CYPRESS ENVIROSYSTEMS) IN PLASTIC GUARD TO BE DEMOLISHED AND REMOVED (UNDER DIRECTION OF ATC CONTRACTOR). REUSE EXISTING CONTROL POWER SOURCE FOR NEW WORK THERMOSTAT.



2700 Westchester Ave., Suite 415  
Purchase, NY 10577  
914.358.5623 • www.h2m.com

CONSULTANTS:

MARK	DATE	DESCRIPTION
-	11-03-21	FINAL BID SET

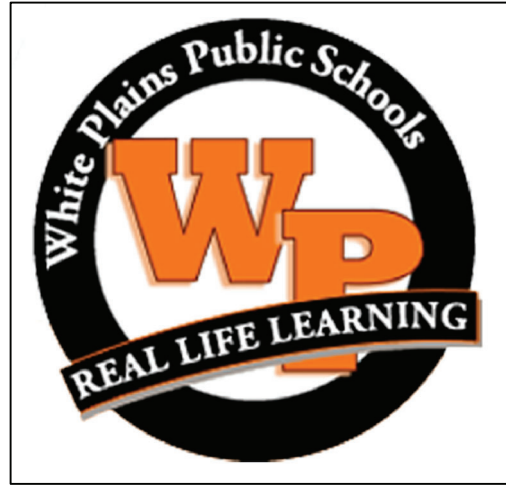


DESIGNED BY: JSK	DRAWN BY: JSK	CHECKED BY:	REVIEWED BY:
PROJECT NO.: WPSD 2007	DATE: NOVEMBER 2021	SCALE:	AS SHOWN

CLIENT

**White Plains City School District**

Toilet Room Renovations at the George Washington Elementary School



100 Orchard Street  
White Plains NY, 10604

66-22-00-01-0-009-016

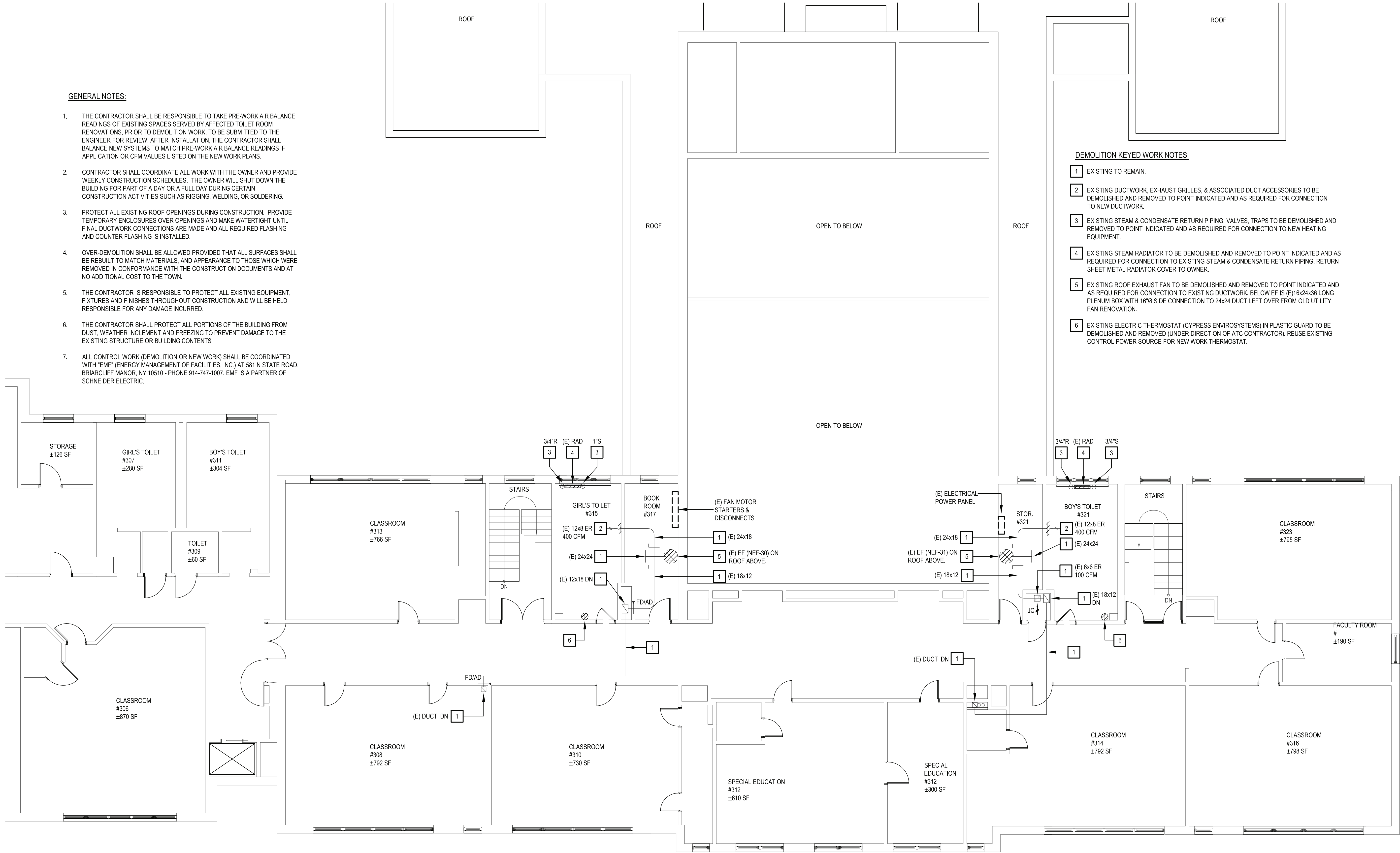
CONTRACT	CONTRACT G GENERAL CONSTRUCTION
STATUS	FINAL BID DOCUMENT
SHEET TITLE	MECHANICAL DEMOLITION PLAN SECOND FLOOR
DRAWING No.	MD 101.00



X:\WPSD\White Plains Central School District\10901\WPSD 2007 - George Washington Toilet Room Renovations\102.00 - 3rd Floor Mechanical Demolition\102.00 - 3rd Floor Mechanical Demolition.dwg Last Modified: Oct 01, 2021 - 10:35am Printed on: Nov 02, 2021 - 11:08am By: dframan

GENERAL NOTES:

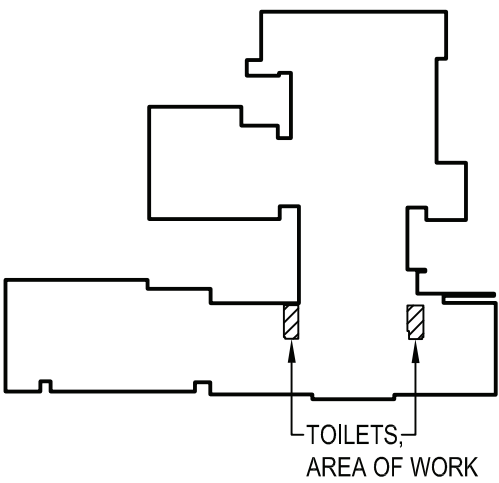
1. THE CONTRACTOR SHALL BE RESPONSIBLE TO TAKE PRE-WORK AIR BALANCE READINGS OF EXISTING SPACES SERVED BY AFFECTED TOILET ROOM RENOVATIONS. PRIOR TO DEMOLITION WORK, TO BE SUBMITTED TO THE ENGINEER FOR REVIEW. AFTER INSTALLATION, THE CONTRACTOR SHALL BALANCE NEW SYSTEMS TO MATCH PRE-WORK AIR BALANCE READINGS IF APPLICATION OR CFM VALUES LISTED ON THE NEW WORK PLANS.
2. CONTRACTOR SHALL COORDINATE ALL WORK WITH THE OWNER AND PROVIDE WEEKLY CONSTRUCTION SCHEDULES. THE OWNER WILL SHUT DOWN THE BUILDING FOR PART OF A DAY OR A FULL DAY DURING CERTAIN CONSTRUCTION ACTIVITIES SUCH AS RIGGING, WELDING, OR SOLDERING.
3. PROTECT ALL EXISTING ROOF OPENINGS DURING CONSTRUCTION. PROVIDE TEMPORARY ENCLOSURES OVER OPENINGS AND MAKE WATERTIGHT UNTIL FINAL DUCTWORK CONNECTIONS ARE MADE AND ALL REQUIRED FLASHING AND COUNTER FLASHING IS INSTALLED.
4. OVER-DEMOLITION SHALL BE ALLOWED PROVIDED THAT ALL SURFACES SHALL BE REBUILT TO MATCH MATERIALS, AND APPEARANCE TO THOSE WHICH WERE REMOVED IN CONFORMANCE WITH THE CONSTRUCTION DOCUMENTS AND AT NO ADDITIONAL COST TO THE TOWN.
5. THE CONTRACTOR IS RESPONSIBLE TO PROTECT ALL EXISTING EQUIPMENT, FIXTURES AND FINISHES THROUGHOUT CONSTRUCTION AND WILL BE HELD RESPONSIBLE FOR ANY DAMAGE INCURRED.
6. THE CONTRACTOR SHALL PROTECT ALL PORTIONS OF THE BUILDING FROM DUST, WEATHER INCLEMENT AND FREEZING TO PREVENT DAMAGE TO THE EXISTING STRUCTURE OR BUILDING CONTENTS.
7. ALL CONTROL WORK (DEMOLITION OR NEW WORK) SHALL BE COORDINATED WITH "EMF" (ENERGY MANAGEMENT OF FACILITIES, INC.) AT 581 N STATE ROAD, BRIARCLIFF MANOR, NY 10510 - PHONE 914-747-1007. EMF IS A PARTNER OF SCHNEIDER ELECTRIC.



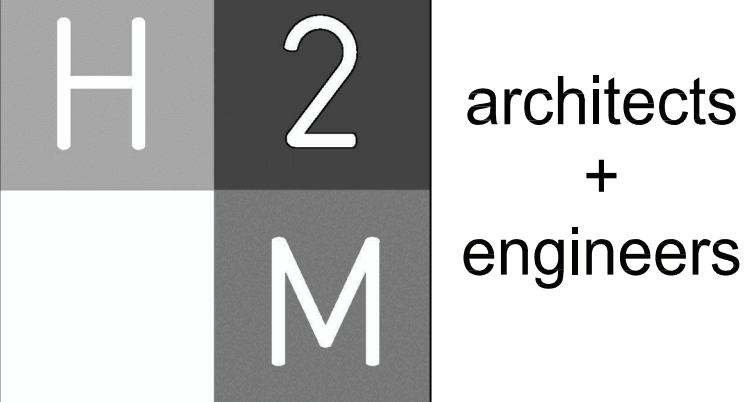
DEMOLITION KEYED WORK NOTES:

- 1 EXISTING TO REMAIN.
- 2 EXISTING DUCTWORK, EXHAUST GRILLES, & ASSOCIATED DUCT ACCESSORIES TO BE DEMOLISHED AND REMOVED TO POINT INDICATED AND AS REQUIRED FOR CONNECTION TO NEW DUCTWORK.
- 3 EXISTING STEAM & CONDENSATE RETURN PIPING, VALVES, TRAPS TO BE DEMOLISHED AND REMOVED TO POINT INDICATED AND AS REQUIRED FOR CONNECTION TO NEW HEATING EQUIPMENT.
- 4 EXISTING STEAM RADIATOR TO BE DEMOLISHED AND REMOVED TO POINT INDICATED AND AS REQUIRED FOR CONNECTION TO EXISTING STEAM & CONDENSATE RETURN PIPING. RETURN SHEET METAL RADIATOR COVER TO OWNER.
- 5 EXISTING ROOF EXHAUST FAN TO BE DEMOLISHED AND REMOVED TO POINT INDICATED AND AS REQUIRED FOR CONNECTION TO EXISTING DUCTWORK. BELOW EF IS (E)16x24x36 LONG PLENUM BOX WITH 16"Ø SIDE CONNECTION TO 24x24 DUCT LEFT OVER FROM OLD UTILITY FAN RENOVATION.
- 6 EXISTING ELECTRIC THERMOSTAT (CYPRESS ENVIROSYSTEMS) IN PLASTIC GUARD TO BE DEMOLISHED AND REMOVED (UNDER DIRECTION OF ATC CONTRACTOR). REUSE EXISTING CONTROL POWER SOURCE FOR NEW WORK THERMOSTAT.

1 Mechanical Third Floor Demolition Plan  
SCALE: 1/8"=1'-0"



2 Key Plan  
SCALE: NTS



2700 Westchester Ave., Suite 415  
Purchase, NY 10577  
914.358.5623 • www.h2m.com

CONSULTANTS:

MARK	DATE	DESCRIPTION
-	11-03-21	FINAL BID SET



DESIGNED BY: JSK	DRAWN BY: JSK	CHECKED BY:	REVIEWED BY:
PROJECT NO.: WPSD 2007	DATE: NOVEMBER 2021	SCALE: AS SHOWN	

CLIENT

**White Plains City School District**

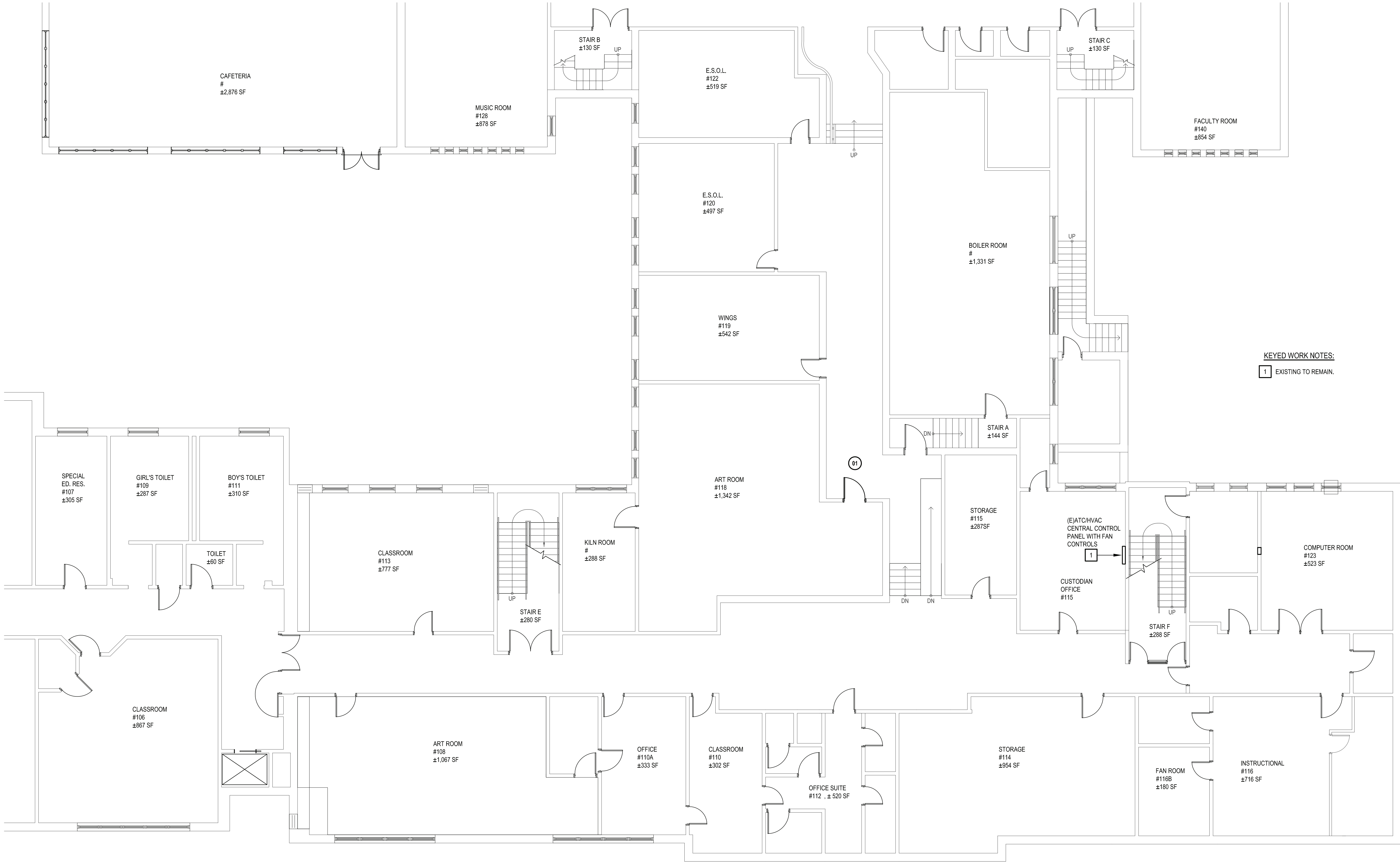
Toilet Room Renovations at the George Washington Elementary School

100 Orchard Street  
White Plains NY, 10604

66-22-00-01-0-009-016

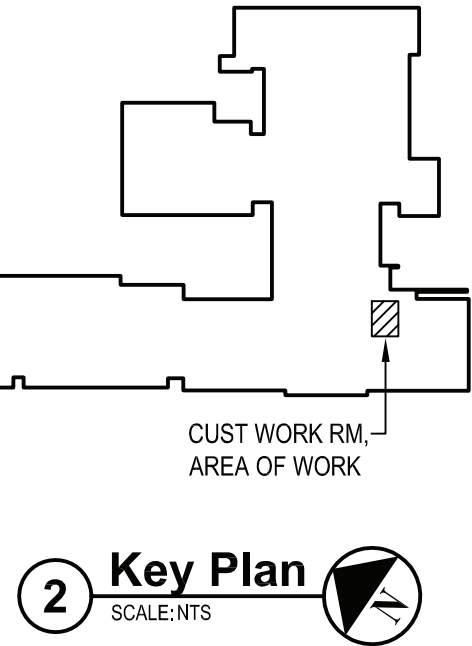
CONTRACT	CONTRACT G GENERAL CONSTRUCTION
STATUS	FINAL BID DOCUMENT
SHEET TITLE	MECHANICAL DEMOLITION PLAN THIRD FLOOR
DRAWING No.	MD 102.00

X:\WPSD\White Plains Central School District\1-0891\WPSD 2007 - George Washington Toilet Room Renovations\02-BIM\CADD\Con-docs\dwg\100.00 - 1st Floor Mech Plan.dwg, Last Modified: Nov 02, 2021 - 10:57am, Plotted on: Nov 02, 2021 - 11:20am By: sherman

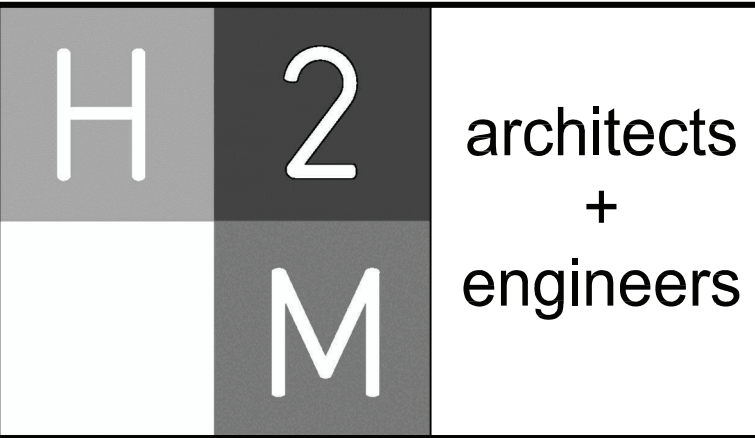


**KEYED WORK NOTES:**  
1 EXISTING TO REMAIN.

**1 Mechanical First Floor Plan**  
SCALE: 1/8"=1'-0"



**2 Key Plan**  
SCALE: NTS



2700 Westchester Ave., Suite 415  
Purchase, NY 10577  
914.358.5623 • www.h2m.com

CONSULTANTS:

MARK	DATE	DESCRIPTION
-	11-03-21	FINAL BID SET



DESIGNED BY: JSK	DRAWN BY: JSK	CHECKED BY:	REVIEWED BY:
PROJECT NO.: WPSD 2007	DATE: NOVEMBER 2021	SCALE:	AS SHOWN

CLIENT

**White Plains City School District**

Toilet Room Renovations at the George Washington Elementary School

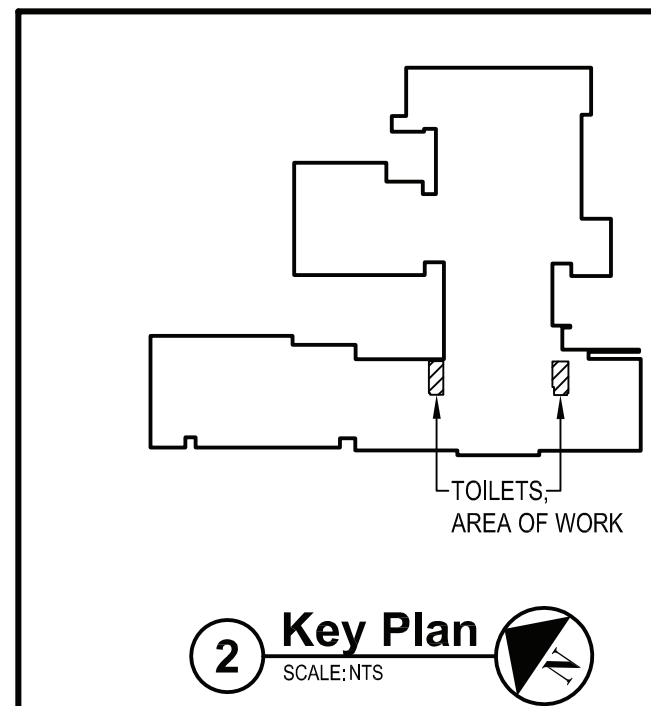


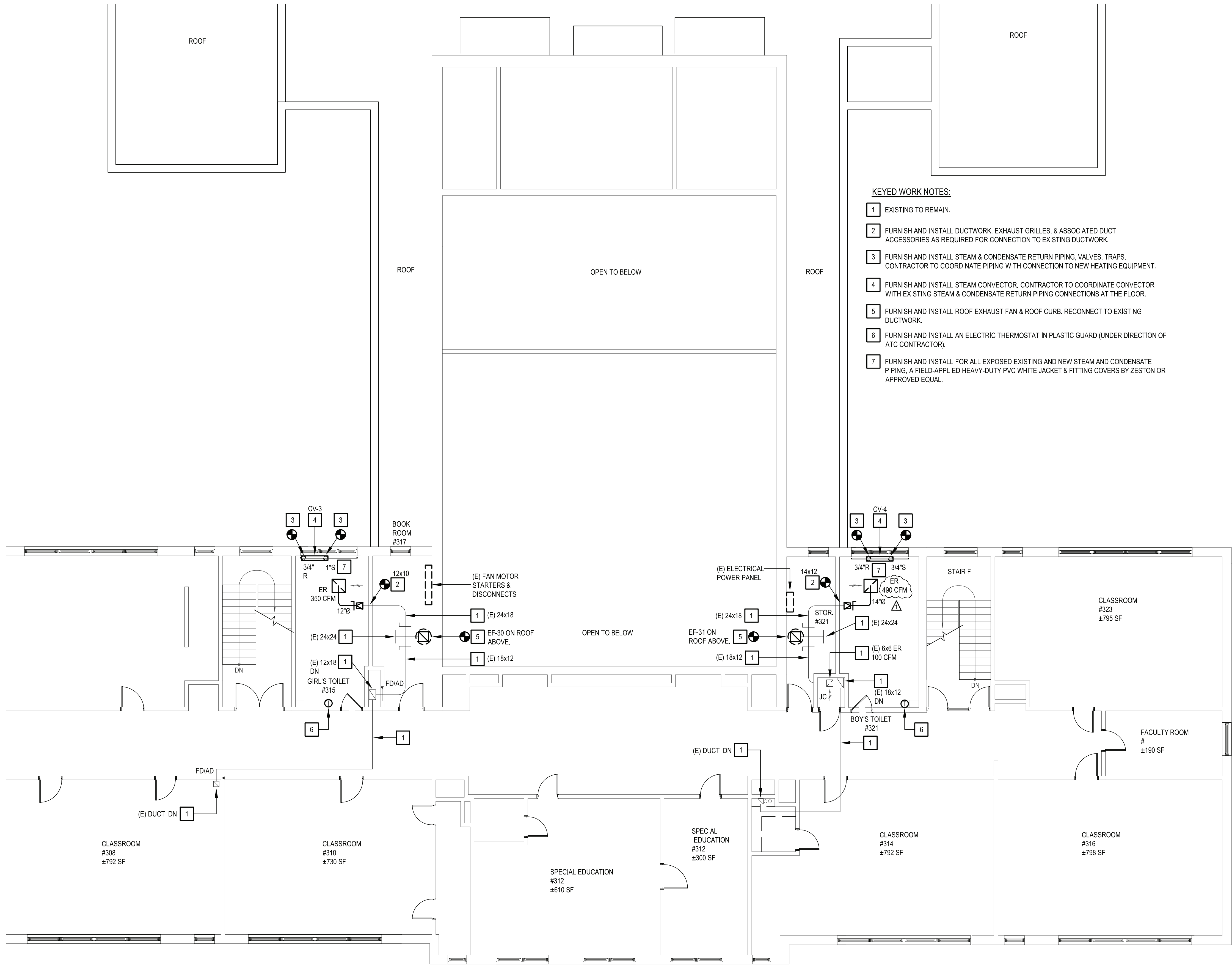
100 Orchard Street  
White Plains NY, 10604

66-22-00-01-0-009-016

CONTRACT	<b>CONTRACT G GENERAL CONSTRUCTION</b>
STATUS	<b>FINAL BID DOCUMENT</b>
SHEET TITLE	<b>MECHANICAL FLOOR PLAN FIRST FLOOR</b>
DRAWING No.	<b>M 100.00</b>



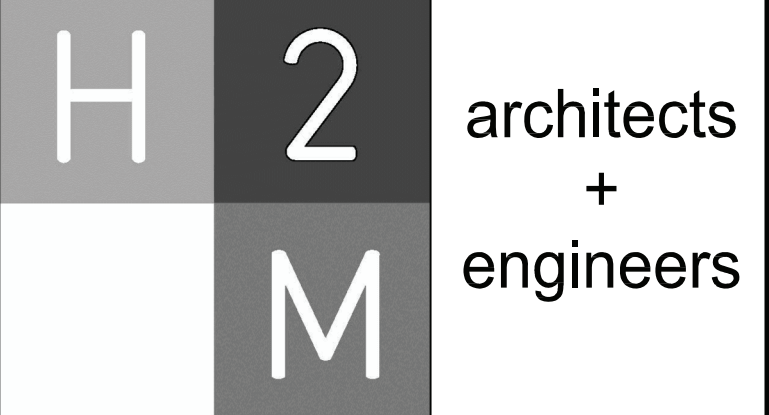
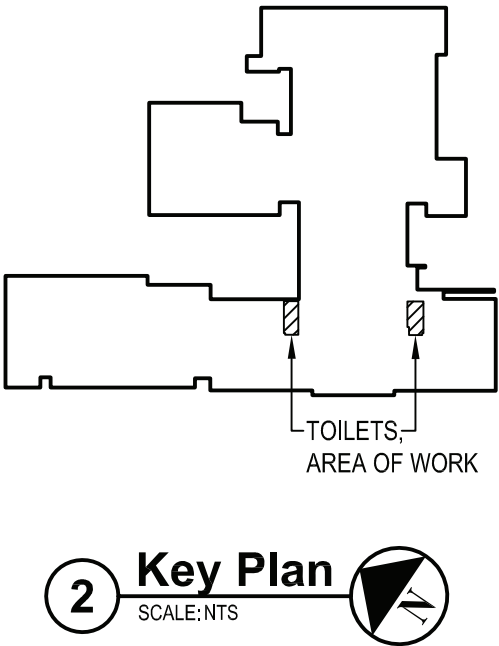




KEYED WORK NOTES:

- 1 EXISTING TO REMAIN.
- 2 FURNISH AND INSTALL DUCTWORK, EXHAUST GRILLES, & ASSOCIATED DUCT ACCESSORIES AS REQUIRED FOR CONNECTION TO EXISTING DUCTWORK.
- 3 FURNISH AND INSTALL STEAM & CONDENSATE RETURN PIPING, VALVES, TRAPS. CONTRACTOR TO COORDINATE PIPING WITH CONNECTION TO NEW HEATING EQUIPMENT.
- 4 FURNISH AND INSTALL STEAM CONVECTOR. CONTRACTOR TO COORDINATE CONVECTOR WITH EXISTING STEAM & CONDENSATE RETURN PIPING CONNECTIONS AT THE FLOOR.
- 5 FURNISH AND INSTALL ROOF EXHAUST FAN & ROOF CURB. RECONNECT TO EXISTING DUCTWORK.
- 6 FURNISH AND INSTALL AN ELECTRIC THERMOSTAT IN PLASTIC GUARD (UNDER DIRECTION OF ATC CONTRACTOR).
- 7 FURNISH AND INSTALL FOR ALL EXPOSED EXISTING AND NEW STEAM AND CONDENSATE PIPING, A FIELD-APPLIED HEAVY-DUTY PVC WHITE JACKET & FITTING COVERS BY ZESTON OR APPROVED EQUAL.

1 Mechanical Third Floor Plan  
SCALE: 1/8"=1'-0"



2700 Westchester Ave., Suite 415  
Purchase, NY 10577  
914.358.5623 • www.h2m.com

CONSULTANTS:		

MARK	DATE	DESCRIPTION
-	11-03-21	FINAL BID SET



DESIGNED BY: JSK	DRAWN BY: JSK	CHECKED BY:	REVIEWED BY:
PROJECT NO.: WPSD 2007	DATE: NOVEMBER 2021	SCALE:	AS SHOWN

CLIENT

**White Plains City School District**

Toilet Room Renovations at the George Washington Elementary School



100 Orchard Street  
White Plains NY, 10604

66-22-00-01-0-009-016

CONTRACT	CONTRACT G GENERAL CONSTRUCTION
STATUS	FINAL BID DOCUMENT
SHEET TITLE	MECHANICAL FLOOR PLAN THIRD FLOOR
DRAWING No.	M 102.00



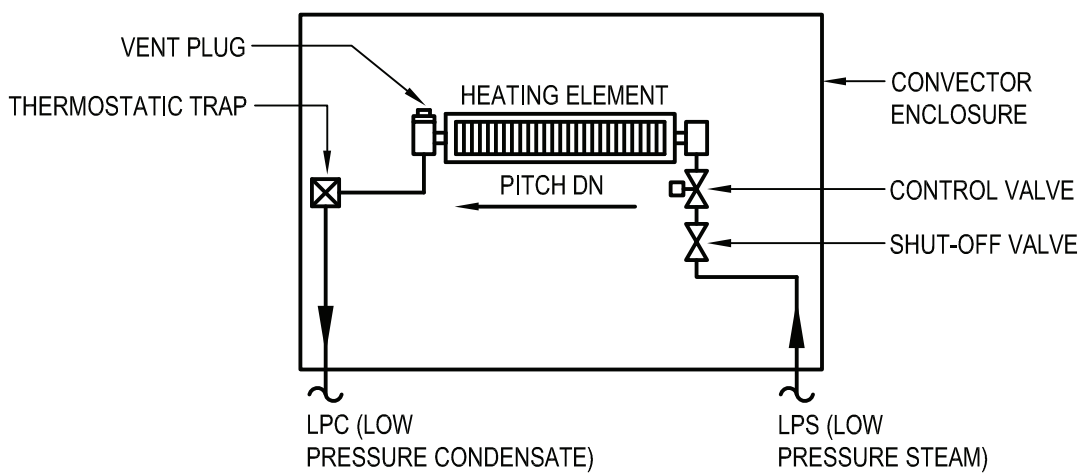
X:\WPSD\White Plains Central School District\1 - 10911\WPSD 2007 - (George Washington Toilet Room Renovations)\02-SHA\2-ADD-Con-detail.dwg Last Modified: Nov 02, 2021 - 11:25am Plotted on: Nov 02, 2021 - 11:25am By: dfreeman

VENTILATION SCHEDULE - GEORGE WASHINGTON ELEMENTARY SCHOOL																		
ROOM NO.	ROOM NAME	EQUIPMENT TAG	ROOM DATA						OUTSIDE AIR CFM REQUIRED (VRP)				EXHAUST AIR CFM REQUIRED			DESIGN AIR FLOWS		NOTES
			TYPE	DISTR EFFECT (Ez)	AREA SQ FT (Az)	HGT	NO. OF FIXTURES	NO. OF PEOPLE (Pz)	PER PERSON (Rp)	PER SQ FT (Ra)	BRTH ZONE (Vbz)	OA REQ'D	PER FIXTURE (CODE)	PER SQ FT (CODE)	TOTAL REQ'D (CODE)	MIN OA (CFM)	EA (CFM)	
215	GIRL'S TOILET ROOM	EF-30	PUBLIC TOILET	0.8	274	10.5	5						70		350		350	1
219	BOY'S TOILET ROOM	EF-31	PUBLIC TOILET	0.8	240	10.5	7	⚠					70		490	⚠	490	1
315	GIRL'S TOILET ROOM	EF-30	PUBLIC TOILET	0.8	266	10.5	5						70		350		350	1
321	BOY'S TOILET ROOM	EF-31	PUBLIC TOILET	0.8	240	10.5	7	⚠					70		490	⚠	490	1
NOTES: 1. ALL ROOM AIR FLOWS ARE BASED ON TABLE 403.3 FROM THE 2020 MECHANICAL CODE OF NYS AND/OR LATEST ASHRAE 62.1, WHICHEVER IS GREATER.																		

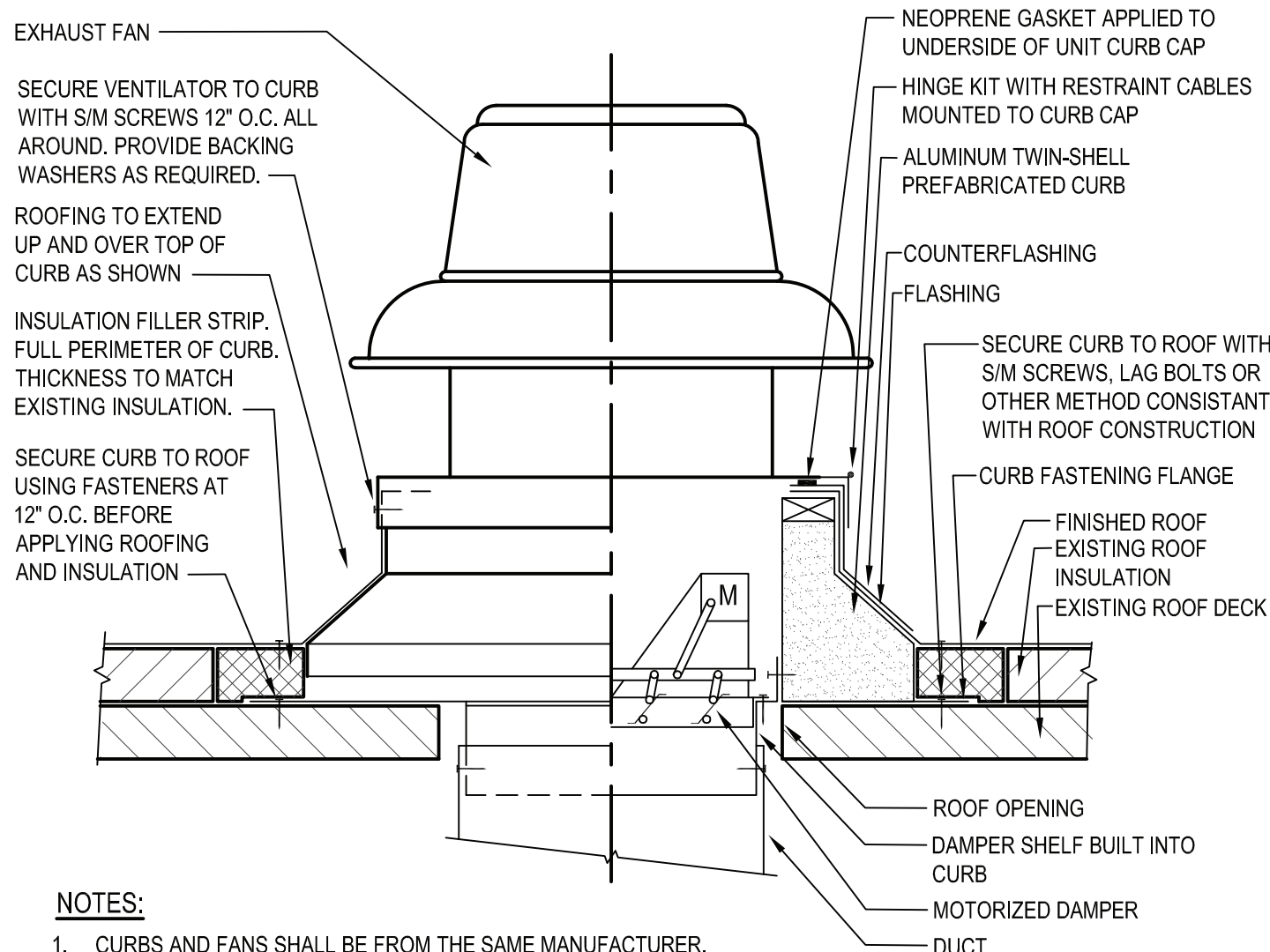
EXHAUST FAN SCHEDULE																			
UNIT	SERVICE	LOCATION	MFG	MODEL	TYPE	DRIVE	AIRFLOW	ESP	SPEED	SOUND POWER	MOTOR DATA			PHYSICAL DATA					NOTES
											V/PH	HP	SPEED	DUCT CONN.		ROOF OPENING		WGT	
														L (IN)	W (IN)	L (IN)	W (IN)		
EF-30	TOILETS	ROOF	GREENHECK	G-123-VG	CENTRIFUGAL DOME	DIRECT	(CFM)	(IN WG)	(RPM)	SONES	208/1/60	1/2	1725	12	12	14.5	14.5	79	1,2,3,4,5,6
EF-31	TOILETS	ROOF	GREENHECK	G-123-VG	CENTRIFUGAL DOME	DIRECT	1500	0.6	1503	13.2	208/1/60	1/2	1725	12	12	14.5	14.5	79	1,2,3,4,5,6
NOTES: 1. FANS SHALL INCLUDE NEMA-1 DISCONNECT SWITCH, THERMAL OVERLOAD PROTECTION, VARI-GREEN ELECTRONICALLY COMMUTATED (EC) MOTORS WITH DIAL ON MOTOR CONTROL. 2. FANS SHALL INCLUDE: HIGH-WIND-RATED ROOF CURB (12 INCH HIGH), HINGED CURB CAP KIT WITH CABLES, FOAMED CURB SEAL, GRAVITY BACKDRAFT DAMPER, ALUMINUM BIRDSCREEN (86% FREE AREA). 3. FAN SHALL SHALL BE UL 705 LISTED, AMCA CERTIFIED. 4. JUNCTION BOX MOUNTED AND WIRED. 5. ONE YEAR STANDARD WARRANTY. 6. INTERLOCK EXHAUST FAN WITH AUTOMATIC TEMPERATURE CONTROL SYSTEM.																			

CONVECTOR SCHEDULE												
UNIT	MFG	MODEL	MOUNTING TYPE	OUTLET GRILLE TYPE	INLET GRILLE TYPE	STEAM TEMPERATURE	STEAM HEATING CAPACITY BTUH	PHYSICAL DATA				NOTES
								D	L	H	RECESS DEPTH	
CV-1	STERLING	SFG-A	FREE STANDING CABINET	SLOPING TOP	FRONT	215	19,610	8	48	32	N/A	1,2,3,4
CV-2	STERLING	SFG-A	FREE STANDING CABINET	SLOPING TOP	FRONT	215	19,610	8	48	32	N/A	1,2,3,4
CV-3	STERLING	SFG-A	FREE STANDING CABINET	SLOPING TOP	FRONT	215	19,610	8	48	32	N/A	1,2,3,4
CV-4	STERLING	SFG-A	FREE STANDING CABINET	SLOPING TOP	FRONT	215	19,610	8	48	32	N/A	1,2,3,4
NOTES: 1. FREE STANDING EXPOSED CABINET ENCLOSURE FITTED FLUSH AGAINST WALL WITH SLOPED TOP INTEGRAL OUTLET GRILLE AND LOW INTEGRAL INLET GRILLE IN FRONT PANEL. 2. PROVIDE 14 GAUGE HEAVY-DUTY ENCLOSURE. 3. CUSTOM COLOR SELECTION BY ARCHITECT. 4. CONTRACTOR SHALL FIELD VERIFY DIMENSIONS WITH PIPING CONNECTIONS PRIOR TO ORDERING.												

GRILLE SCHEDULE											
TAG	TYPE	MFG	MODEL	MOUNT TYPE	MODULE SIZE	NECK SIZE	AIRFLOW RANGE	NC RATING	PRESS LOSS	NOTES	
					(IN)	(IN)	(CFM)		(IN WG)		
EG	EXHAUST GRILLE	TITUS	PAR	LAY-IN	24x24	6" DIA.	0-120	13	0.1	1, 2, 3, 4	
EG	EXHAUST GRILLE	TITUS	PAR	LAY-IN	24x24	8" DIA.	121-210	19	0.1	1, 2, 3, 4	
EG	EXHAUST GRILLE	TITUS	PAR	LAY-IN	24x24	10" DIA.	211-325	24	0.1	1, 2, 3, 4	
EG	EXHAUST GRILLE	TITUS	PAR	LAY-IN	24x24	12" DIA.	326-475	28	0.1	1, 2, 3, 4	
EG	EXHAUST GRILLE	TITUS	PAR	LAY-IN	24x24	14" DIA.	476-640	28	0.1	1, 2, 3, 4	
NOTES											
1. COLOR AND MOUNTING STYLE SELECTION BY ARCHITECT. PROVIDE COLOR SAMPLE, OTHERWISE STANDARD FINISH IS #26 WHITE.											
2. GRILLES SHALL BE OF STEEL CONSTRUCTION WITH FLUSH PERFORATED FACE.											
3. PROVIDE VOLUME DAMPER IN BRANCH DUCT.											
4. CONTRACTOR TO VERIFY CEILING TYPE, GRID MODULE, AND LAY-IN FRAME TYPES.											

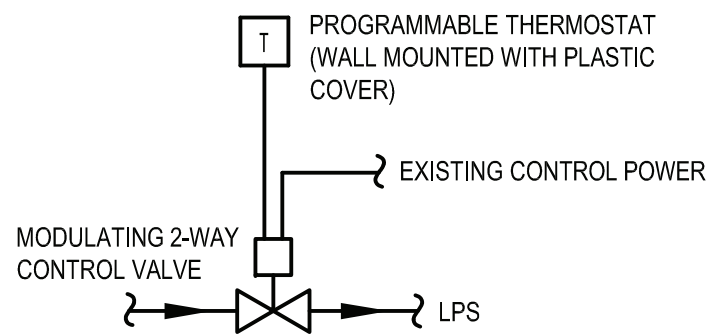


1 Steam Convector - Piping Detail  
SCALE: NTS



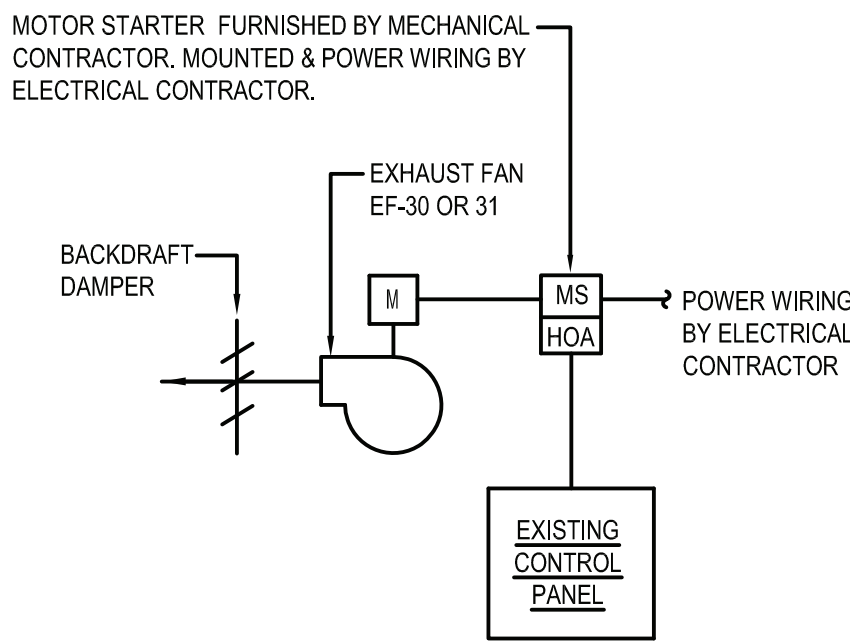
- NOTES:
- CURBS AND FANS SHALL BE FROM THE SAME MANUFACTURER.
  - ROOF OPENING IN ACCORDANCE WITH MANUFACTURER'S APPROVED SHOP DRAWINGS.
  - CURB HEIGHT SHALL BE 12" ABOVE FINISHED ROOF.
  - ALL FLASHING AND ROOF WORK BY CONTRACTOR.

# Roof Exhaust Fan & Curb  
SCALE: NTS



ALL CONTROL WORK (DEMOLITION OR NEW WORK) SHALL BE COORDINATED WITH "EMF" (ENERGY MANAGEMENT OF FACILITIES, INC.) AT 581 N STATE ROAD, BRIARCLIFF MANOR, NY 10510 - PHONE 914-747-1007. EMF IS A PARTNER OF SCHNEIDER ELECTRIC.

3 Steam Convector - Control Schematic  
SCALE: NTS



ALL CONTROL WORK (DEMOLITION OR NEW WORK) SHALL BE COORDINATED WITH "EMF" (ENERGY MANAGEMENT OF FACILITIES, INC.) AT 581 N STATE ROAD, BRIARCLIFF MANOR, NY 10510 - PHONE 914-747-1007. EMF IS A PARTNER OF SCHNEIDER ELECTRIC.

4 Exhaust Fan - Control Schematic  
SCALE: NTS

2700 Westchester Ave., Suite 415  
Purchase, NY 10577  
914.358.5623 • www.h2m.com

CONSULTANTS:

MARK	DATE	DESCRIPTION
-	11-03-21	FINAL BID SET



"ALTERATION OF THIS DOCUMENT EXCEPT BY A LICENSED PROFESSIONAL ENGINEER."			
DESIGNED BY: JSK	DRAWN BY: JSK	CHECKED BY:	REVIEWED BY:
PROJECT NO.: WPSD 2007	DATE: NOVEMBER 2021	SCALE:	AS SHOWN

CLIENT

## White Plains City School District

Toilet Room Renovations at the George Washington Elementary School

100 Orchard Street  
White Plains NY, 10604

66-22-00-01-0-009-016

CONTRACT	CONTRACT G GENERAL CONSTRUCTION
STATUS	FINAL BID DOCUMENT
SHEET TITLE	MECHANICAL SCHEDULES AND DETAILS
DRAWING No.	M 300.00