

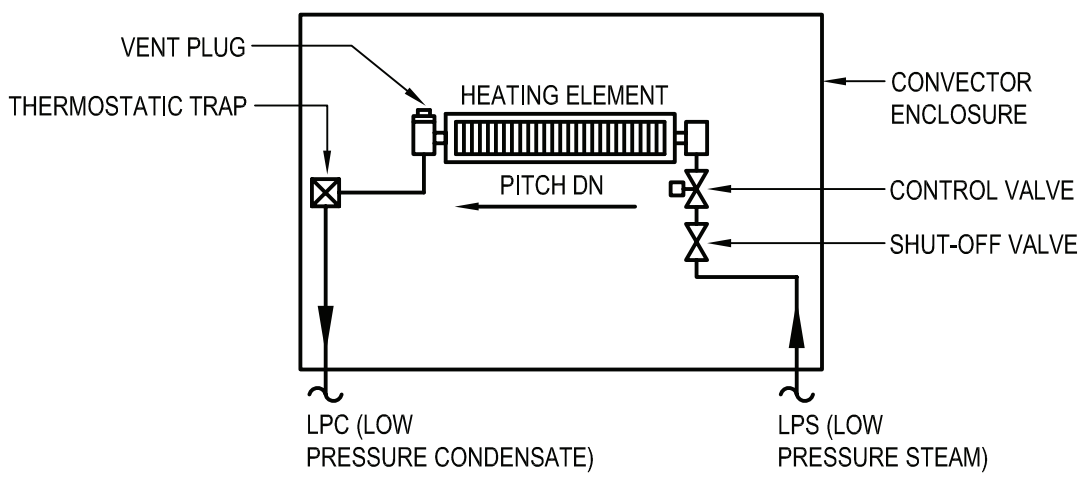
X:\WPSP\White Plains Central School District\1 - 10911\WPSP 2007 - (George Washington Toilet Room Renovations)\02-SHMCADD\Con-detail.dwg Last Modified: Nov 02, 2021 - 11:25am Plotted on: Nov 02, 2021 - 11:25am By: dfreeman

VENTILATION SCHEDULE - GEORGE WASHINGTON ELEMENTARY SCHOOL																		
ROOM NO.	ROOM NAME	EQUIPMENT TAG	ROOM DATA						OUTSIDE AIR CFM REQUIRED (VRP)				EXHAUST AIR CFM REQUIRED			DESIGN AIR FLOWS		NOTES
			TYPE	DISTR EFFECT (Ez)	AREA SQ FT (Az)	HGT	NO. OF FIXTURES	NO. OF PEOPLE (Pz)	PER PERSON (Rp)	PER SQ FT (Ra)	BRTH ZONE (Vbz)	OA REQ'D	PER FIXTURE (CODE)	PER SQ FT (CODE)	TOTAL REQ'D (CODE)	MIN OA (CFM)	EA (CFM)	
215	GIRL'S TOILET ROOM	EF-30	PUBLIC TOILET	0.8	274	10.5	5						70		350		350	1
219	BOY'S TOILET ROOM	EF-31	PUBLIC TOILET	0.8	240	10.5	7	⚠					70		490	⚠	490	1
315	GIRL'S TOILET ROOM	EF-30	PUBLIC TOILET	0.8	266	10.5	5						70		350		350	1
321	BOY'S TOILET ROOM	EF-31	PUBLIC TOILET	0.8	240	10.5	7	⚠					70		490	⚠	490	1
NOTES: 1. ALL ROOM AIR FLOWS ARE BASED ON TABLE 403.3 FROM THE 2020 MECHANICAL CODE OF NYS AND/OR LATEST ASHRAE 62.1, WHICHEVER IS GREATER.																		

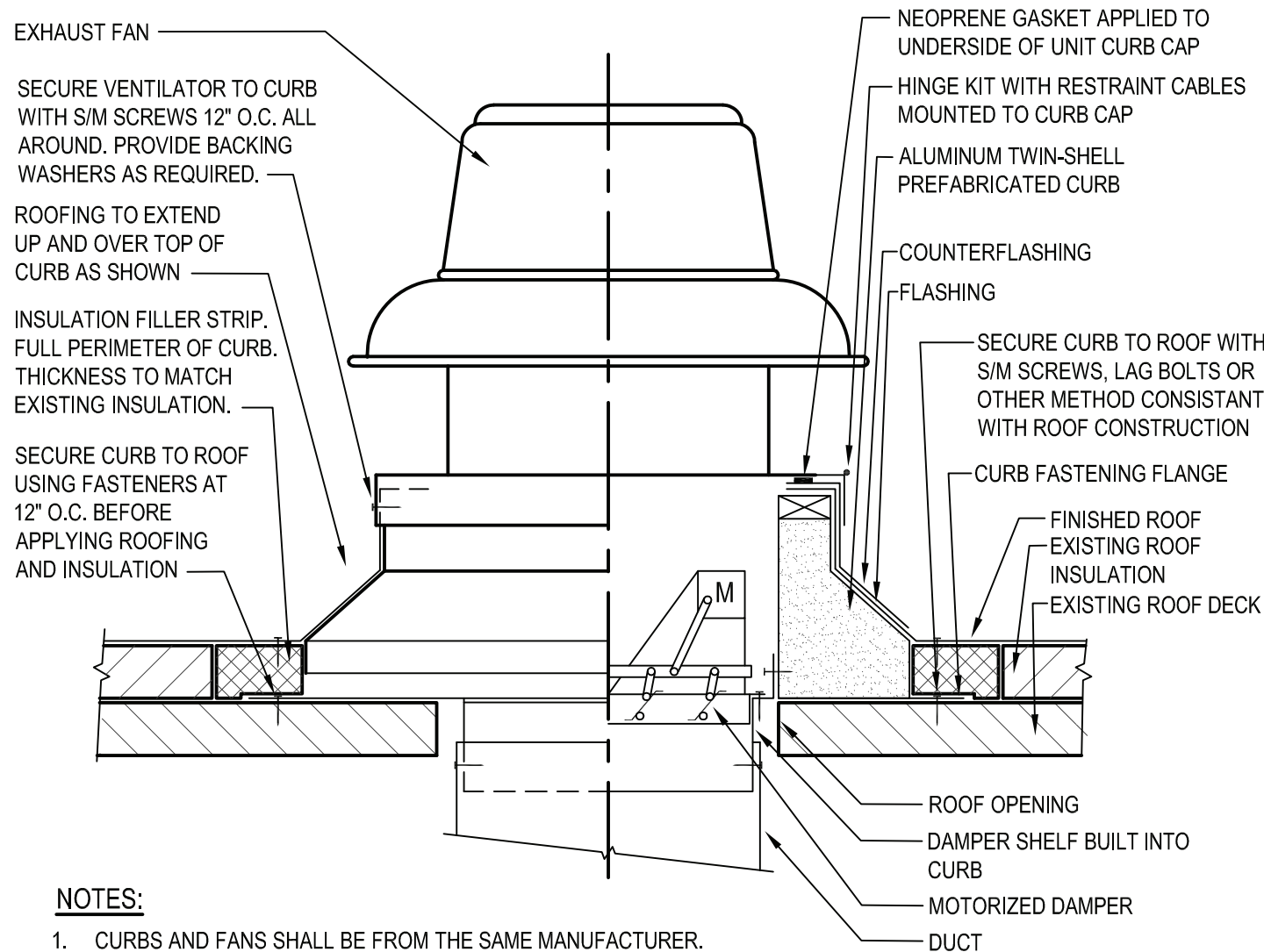
EXHAUST FAN SCHEDULE																			
UNIT	SERVICE	LOCATION	MFG	MODEL	TYPE	DRIVE	AIRFLOW	ESP	SPEED	SOUND POWER	MOTOR DATA			PHYSICAL DATA					NOTES
											V/PH	HP	SPEED	DUCT CONN.		ROOF OPENING		WGT	
														L (IN)	W (IN)	L (IN)	W (IN)		
EF-30	TOILETS	ROOF	GREENHECK	G-123-VG	CENTRIFUGAL DOME	DIRECT	(CFM)	(IN WG)	(RPM)	SONES	208/1/60	1/2	1725	12	12	14.5	14.5	79	1,2,3,4,5,6
EF-31	TOILETS	ROOF	GREENHECK	G-123-VG	CENTRIFUGAL DOME	DIRECT	1500	0.6	1503	13.2	208/1/60	1/2	1725	12	12	14.5	14.5	79	1,2,3,4,5,6
NOTES: 1. FANS SHALL INCLUDE NEMA-1 DISCONNECT SWITCH, THERMAL OVERLOAD PROTECTION, VARI-GREEN ELECTRONICALLY COMMUTATED (EC) MOTORS WITH DIAL ON MOTOR CONTROL. 2. FANS SHALL INCLUDE: HIGH-WIND-RATED ROOF CURB (12 INCH HIGH), HINGED CURB CAP KIT WITH CABLES, FOAMED CURB SEAL, GRAVITY BACKDRAFT DAMPER, ALUMINUM BIRDSCREEN (86% FREE AREA). 3. FAN SHALL SHALL BE UL 705 LISTED, AMCA CERTIFIED. 4. JUNCTION BOX MOUNTED AND WIRED. 5. ONE YEAR STANDARD WARRANTY. 6. INTERLOCK EXHAUST FAN WITH AUTOMATIC TEMPERATURE CONTROL SYSTEM.																			

CONVECTOR SCHEDULE												
UNIT	MFG	MODEL	MOUNTING TYPE	OUTLET GRILLE TYPE	INLET GRILLE TYPE	STEAM TEMPERATURE	STEAM HEATING CAPACITY BTUH	PHYSICAL DATA				NOTES
								D	L	H	RECESS DEPTH	
CV-1	STERLING	SFG-A	FREE STANDING CABINET	SLOPING TOP	FRONT	215	19,610	8	48	32	N/A	1,2,3,4
CV-2	STERLING	SFG-A	FREE STANDING CABINET	SLOPING TOP	FRONT	215	19,610	8	48	32	N/A	1,2,3,4
CV-3	STERLING	SFG-A	FREE STANDING CABINET	SLOPING TOP	FRONT	215	19,610	8	48	32	N/A	1,2,3,4
CV-4	STERLING	SFG-A	FREE STANDING CABINET	SLOPING TOP	FRONT	215	19,610	8	48	32	N/A	1,2,3,4
NOTES: 1. FREE STANDING EXPOSED CABINET ENCLOSURE FITTED FLUSH AGAINST WALL WITH SLOPED TOP INTEGRAL OUTLET GRILLE AND LOW INTEGRAL INLET GRILLE IN FRONT PANEL. 2. PROVIDE 14 GAUGE HEAVY-DUTY ENCLOSURE. 3. CUSTOM COLOR SELECTION BY ARCHITECT. 4. CONTRACTOR SHALL FIELD VERIFY DIMENSIONS WITH PIPING CONNECTIONS PRIOR TO ORDERING.												

GRILLE SCHEDULE											
TAG	TYPE	MFG	MODEL	MOUNT TYPE	MODULE SIZE	NECK SIZE	AIRFLOW RANGE	NC RATING	PRESS LOSS	NOTES	
					(IN)	(IN)	(CFM)		(IN WG)		
EG	EXHAUST GRILLE	TITUS	PAR	LAY-IN	24x24	6" DIA.	0-120	13	0.1	1, 2, 3, 4	
EG	EXHAUST GRILLE	TITUS	PAR	LAY-IN	24x24	8" DIA.	121-210	19	0.1	1, 2, 3, 4	
EG	EXHAUST GRILLE	TITUS	PAR	LAY-IN	24x24	10" DIA.	211-325	24	0.1	1, 2, 3, 4	
EG	EXHAUST GRILLE	TITUS	PAR	LAY-IN	24x24	12" DIA.	326-475	28	0.1	1, 2, 3, 4	
EG	EXHAUST GRILLE	TITUS	PAR	LAY-IN	24x24	14" DIA.	476-640	28	0.1	1, 2, 3, 4	
NOTES											
1. COLOR AND MOUNTING STYLE SELECTION BY ARCHITECT. PROVIDE COLOR SAMPLE, OTHERWISE STANDARD FINISH IS #26 WHITE.											
2. GRILLES SHALL BE OF STEEL CONSTRUCTION WITH FLUSH PERFORATED FACE.											
3. PROVIDE VOLUME DAMPER IN BRANCH DUCT.											
4. CONTRACTOR TO VERIFY CEILING TYPE, GRID MODULE, AND LAY-IN FRAME TYPES.											



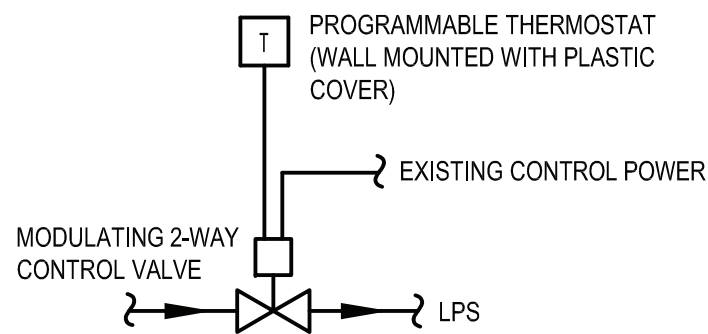
1 Steam Convector - Piping Detail
SCALE: NTS



NOTES:

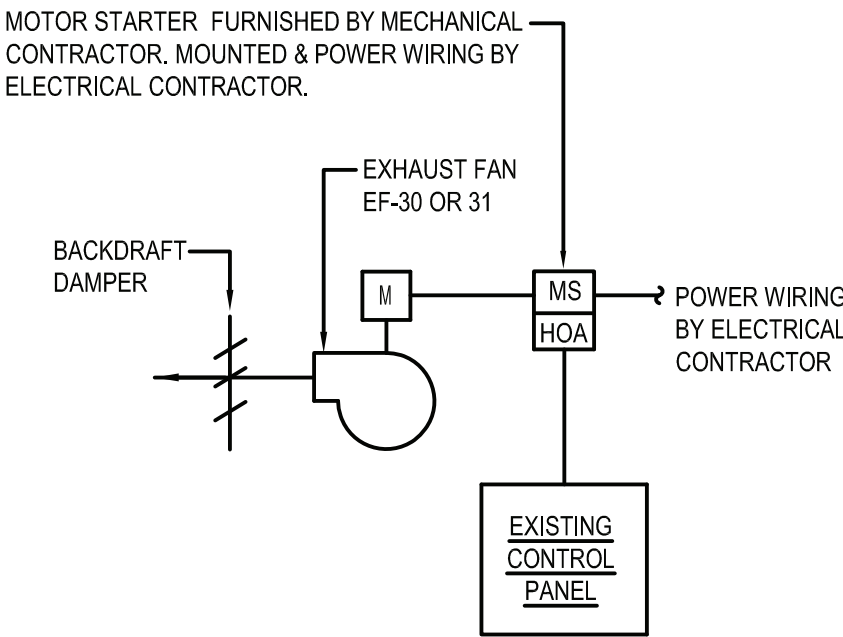
- CURBS AND FANS SHALL BE FROM THE SAME MANUFACTURER.
- ROOF OPENING IN ACCORDANCE WITH MANUFACTURER'S APPROVED SHOP DRAWINGS.
- CURB HEIGHT SHALL BE 12" ABOVE FINISHED ROOF.
- ALL FLASHING AND ROOF WORK BY CONTRACTOR.

Roof Exhaust Fan & Curb
SCALE: NTS



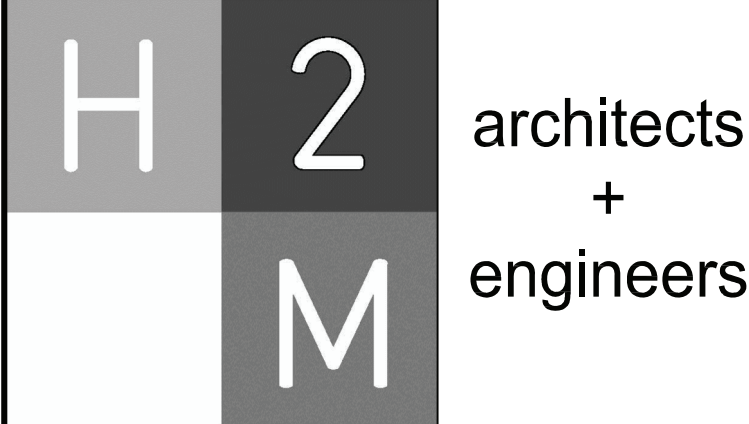
ALL CONTROL WORK (DEMOLITION OR NEW WORK) SHALL BE COORDINATED WITH "EMF" (ENERGY MANAGEMENT OF FACILITIES, INC.) AT 581 N STATE ROAD, BRIARCLIFF MANOR, NY 10510 - PHONE 914-747-1007. EMF IS A PARTNER OF SCHNEIDER ELECTRIC.

3 Steam Convector - Control Schematic
SCALE: NTS



ALL CONTROL WORK (DEMOLITION OR NEW WORK) SHALL BE COORDINATED WITH "EMF" (ENERGY MANAGEMENT OF FACILITIES, INC.) AT 581 N STATE ROAD, BRIARCLIFF MANOR, NY 10510 - PHONE 914-747-1007. EMF IS A PARTNER OF SCHNEIDER ELECTRIC.

4 Exhaust Fan - Control Schematic
SCALE: NTS



2700 Westchester Ave., Suite 415
Purchase, NY 10577
914.358.5623 • www.h2m.com

CONSULTANTS:

MARK	DATE	DESCRIPTION
-	11-03-21	FINAL BID SET



DESIGNED BY: JSK	DRAWN BY: JSK	CHECKED BY:	REVIEWED BY:
PROJECT NO.: WPSPD 2007	DATE: NOVEMBER 2021	SCALE:	AS SHOWN

CLIENT

White Plains City School District

Toilet Room Renovations at the George Washington Elementary School

100 Orchard Street
White Plains NY, 10604

66-22-00-01-0-009-016

CONTRACT	CONTRACT G GENERAL CONSTRUCTION
STATUS	FINAL BID DOCUMENT
SHEET TITLE	MECHANICAL SCHEDULES AND DETAILS
DRAWING No.	M 300.00