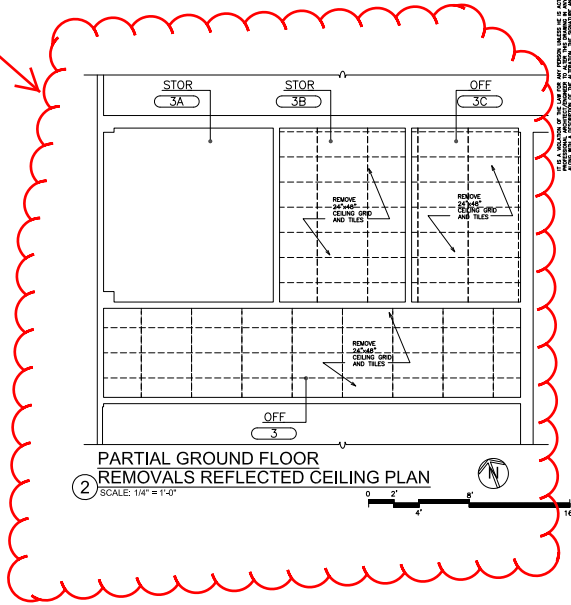


"UN-RELATED LOSS" BID WORK



- | <u>REMOVAL NOTES:</u> | |
|------------------------------|---|
| R1 | REMOVE PLUMBING STOPS, TUB AND RELATED ITEMS IN THEIR ENTIRETY. REFER TO PLUMBING DRAWINGS BY P.C. |
| R2 | REMOVE MECHANICAL EQUIPMENT. REFER TO MECHANICAL DRAWING BY R.M.C. |
| R3 | REMOVE DOOR, DOOR FRAME & DOOR HARDWARE IN ITS ENTIRETY. |
| R4 | REMOVE EXISTING WINDOW & WINDOW FRAME IN ITS ENTIRETY. THE CAUSE OF THE PERMITTER OF THE DAMAGE IS NOT CONTAINED - NOT UNDESIRABLE. LEAVING COMPONENTS AROUND GLASS THEY ARE NOT ANOTHER ASSISTANCE OR PCB. |
| R5 | REMOVE EXISTING SUFFOCATED AIRLOCK, METAL SYSTEM AND SOFTEN GLASS SYSTEM IN THEIR ENTIRETY. SMALL CLOSURE AND REMOVE LISTS AND RELATED ITEMS. |
| R6 | REMOVE EXISTING PLASTER, METAL FRAME AND SOFTEN GLASS SYSTEM AND ALL RELATED ITEMS IN THEIR ENTIRETY. E.G. SMALL DISCONNECT AND REMOVE LISTS AND RELATED ITEMS. |
| R7 | REMOVE EXISTING TABOARD AND ADHESIVES AND RELATED ITEMS IN THEIR ENTIRETY. |
| R8 | REMOVE EXISTING FILL HIGH OPTIMUM BOARD AND ALL RELATED ITEMS IN THEIR ENTIRETY FROM FLOOR TO STRUCTURE ABOVE DOWN TO STUD. |
| R9 | REMOVE EXISTING BUILT-IN CABINETS, COUNTERTOPS AND RELATED ITEMS IN THEIR ENTIRETY. |
| R10 | REMOVE EXISTING TABOARD/WALLPAPER, ADHESIVES AND RELATED ITEMS IN THEIR ENTIRETY. |
| R11 | O SHALL REMOVE EXISTING DOWNSIDE
O SHALL REMOVE EXISTING UPPER SHIP OF DOUBLE HUNG WINDOWS AND REPLACE WITH 2" MINIMUM WITH RASG BRIDGE STRIPS, LISTS, FINISH & LOCK SIDE WITHIN EXISTING WINDOW FRAME. PROVIDE DAMP TRIM AND ACCESSORIES AS REQUIRED. |