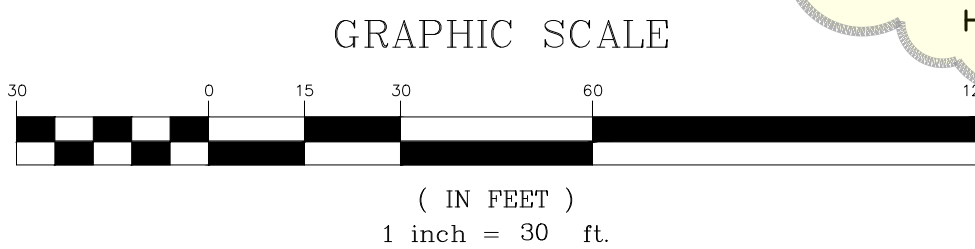
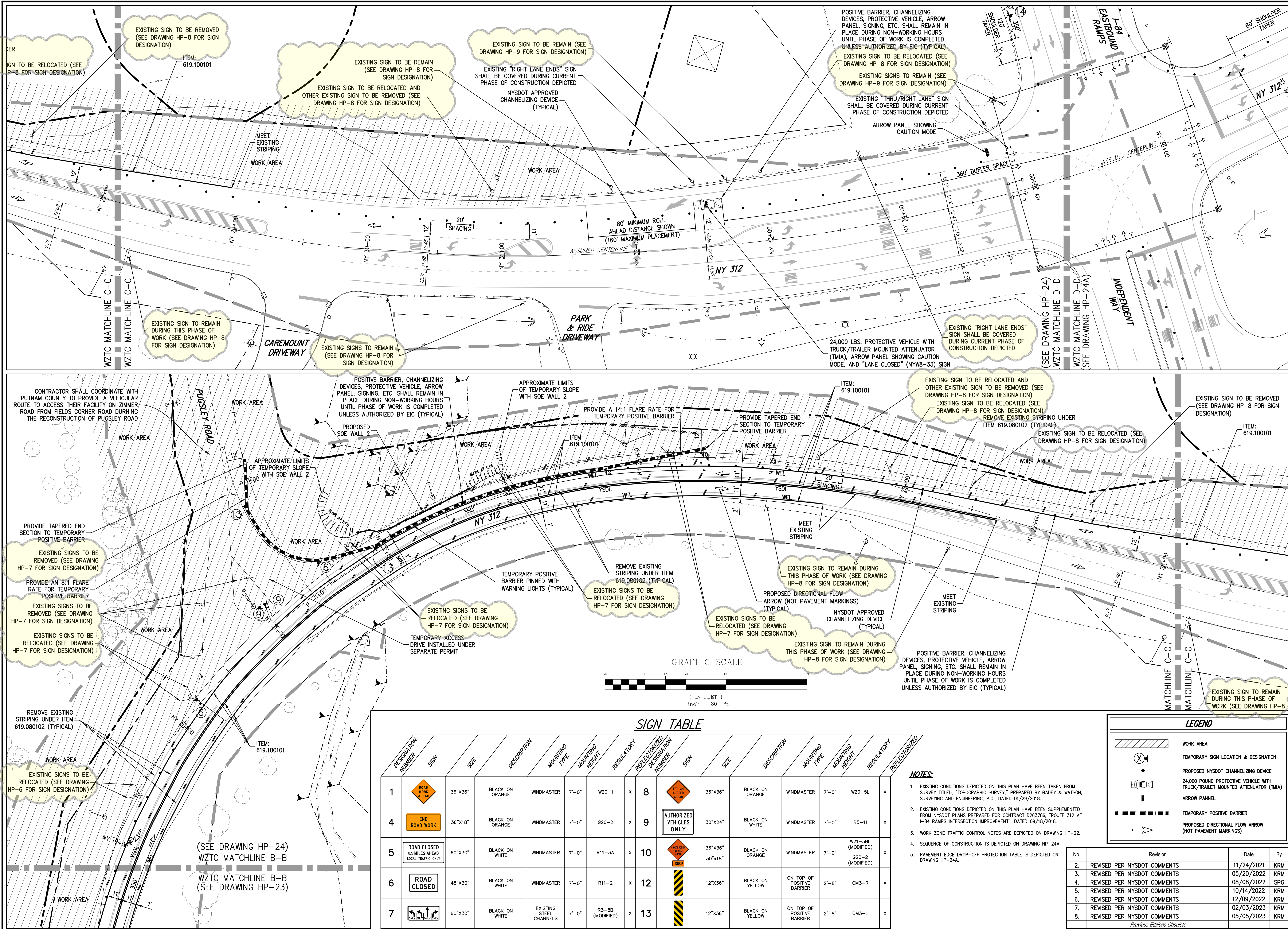


ANY ALTERATION OF PLANS, SPECIFICATIONS, PLATS AND REPORTS BEARING THE SEAL OF A LICENSED PROFESSIONAL ENGINEER OR LICENSED LAND SURVEYOR SHALL BE VOID AND OF NO EFFECT UNLESS MADE IN WRITING BY THE ENGINEER OR SURVEYOR, AND IN ACCORDANCE WITH THE PROFESSIONAL ETHICS AND STANDARDS OF THE PROFESSION.

COPYRIGHT © 2023 BY JMC. All Rights Reserved. No part of this document may be reproduced, stored in a retrieval system, or transmitted in any form or by any means, electronic, mechanical, photocopying, recording or otherwise, without the prior written permission of JMC Planning, Engineering, Architecture & Land Surveying, PLLC. ANY SITE DEVELOPMENT CONSULTANT SHALL BE RESPONSIBLE FOR THE ACCURACY OF THE INFORMATION IN THIS DOCUMENT. ANY INFORMATION NOT PROVIDED HEREIN SHALL BE OBTAINED FROM THE PROJECT RECORDS.



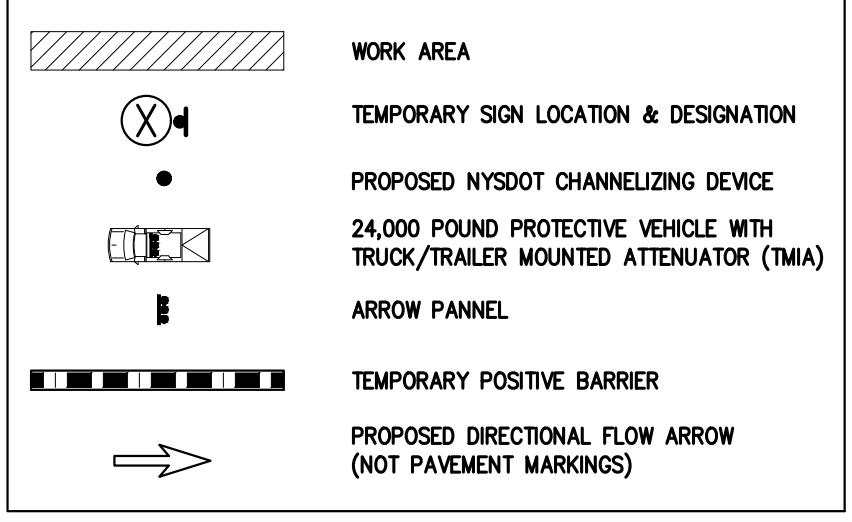
SIGN TABLE

DESIGNATION NUMBER	SIGN	SIZE	DESCRIPTION	MOUNTING TYPE	MOUNTING HEIGHT	REGULATORY	REFLECTORIZED DESIGNATION NUMBER	SIGN	SIZE	DESCRIPTION	MOUNTING TYPE	MOUNTING HEIGHT	REGULATORY	REFLECTORIZED
1		36"x36"	BLACK ON ORANGE	WINDMASTER	7'-0"	W20-1	X	8		36"x36"	BLACK ON ORANGE	7'-0"	W20-5L	X
4		36"x18"	BLACK ON ORANGE	WINDMASTER	7'-0"	G20-2	X	9		30"x24"	BLACK ON WHITE	7'-0"	R5-11	X
5		60"x30"	BLACK ON WHITE	WINDMASTER	7'-0"	R11-3A	X	10		36"x36"	BLACK ON ORANGE	7'-0"	W21-5BL (MODIFIED)	X
6		48"x30"	BLACK ON WHITE	WINDMASTER	7'-0"	R11-2	X	12		12"x36"	BLACK ON YELLOW	2'-8"	G20-2 (MODIFIED)	X
7		60"x30"	BLACK ON WHITE	EXISTING STEEL CHANNELS	7'-0"	R3-BB (MODIFIED)	X	13		12"x36"	BLACK ON YELLOW	2'-8"	OM3-L	X

NOTES:

- EXISTING CONDITIONS DEPICTED ON THIS PLAN HAVE BEEN TAKEN FROM SURVEY TITLED, "TOPOGRAPHIC SURVEY," PREPARED BY BADEY & WATSON, SURVEYING AND ENGINEERING, P.C., DATED 01/29/2018.
- EXISTING CONDITIONS DEPICTED ON THIS PLAN HAVE BEEN SUPPLEMENTED FROM NYSDOT PLANS PREPARED FOR CONTRACT 0263786, "ROUTE 312 AT I-84 RAMP INTERSECTION IMPROVEMENT," DATED 09/18/2018.
- WORK ZONE TRAFFIC CONTROL NOTES ARE DEPICTED ON DRAWING HP-22.
- SEQUENCE OF CONSTRUCTION IS DEPICTED ON DRAWING HP-24A.
- PAVEMENT EDGE DROP-OFF PROTECTION TABLE IS DEPICTED ON DRAWING HP-24A.

LEGEND



No.	Revision	Date	By
2.	REVISED PER NYSDOT COMMENTS	11/24/2021	KRM
3.	REVISED PER NYSDOT COMMENTS	05/20/2022	KRM
4.	REVISED PER NYSDOT COMMENTS	08/08/2022	SPG
5.	REVISED PER NYSDOT COMMENTS	10/14/2022	KRM
6.	REVISED PER NYSDOT COMMENTS	12/09/2022	KRM
7.	REVISED PER NYSDOT COMMENTS	02/03/2023	KRM
8.	REVISED PER NYSDOT COMMENTS	05/05/2023	KRM

Previous Editions Obsolete

WORK ZONE TRAFFIC CONTROL PLAN (PHASE 2)

COMMERCIAL CAMPUS AT FIELDS CORNER
NY 312 & PUGSLEY ROAD
TOWN OF SOUTHEAST, NEW YORK

Drawn: KRM	Approved: MTP
Scale: 1" = 30'	
Date: 12/28/2020	
Project No: 14012/2121	
14012-HW-E01-WZC-PR2	
PHASE 2-C	
Drawing No:	

HP-24

APPLICANT/OWNER:

BREWSTER INDUSTRIAL OWNER LLC
1 MEADOWLANDS PLAZA, SUITE 803
EAST RUTHERFORD, NJ 07073

JMC Planning, Engineering, Landscape
Architecture & Land Surveying, PLLC
JMC Site Development Consultants, LLC

John Meyer Consulting, Inc.
120 BEDFORD ROAD • ARMONK, NY 10504
voice 914.273.9225 • fax 914.273.2102

www.jmcplc.com

