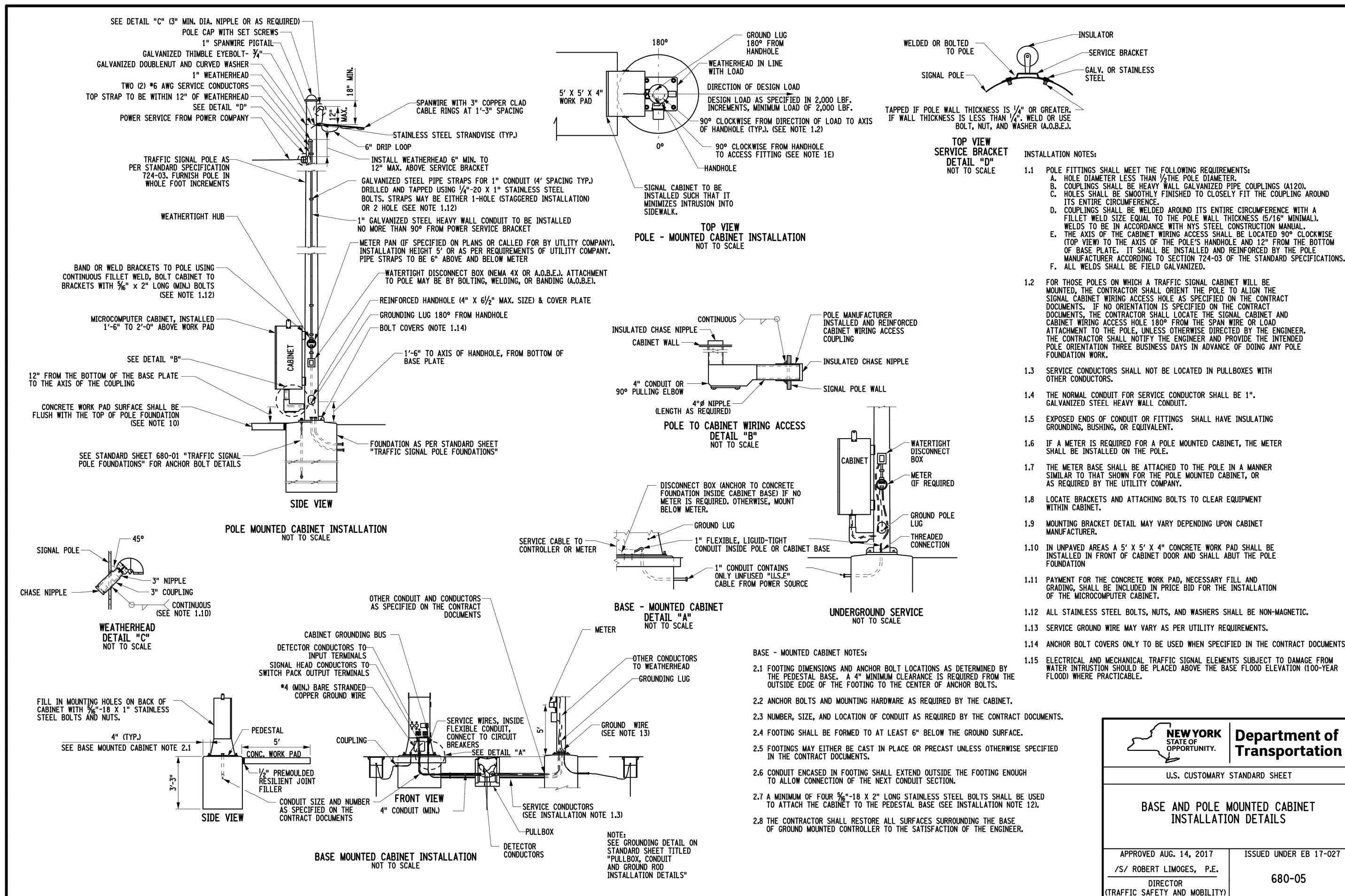


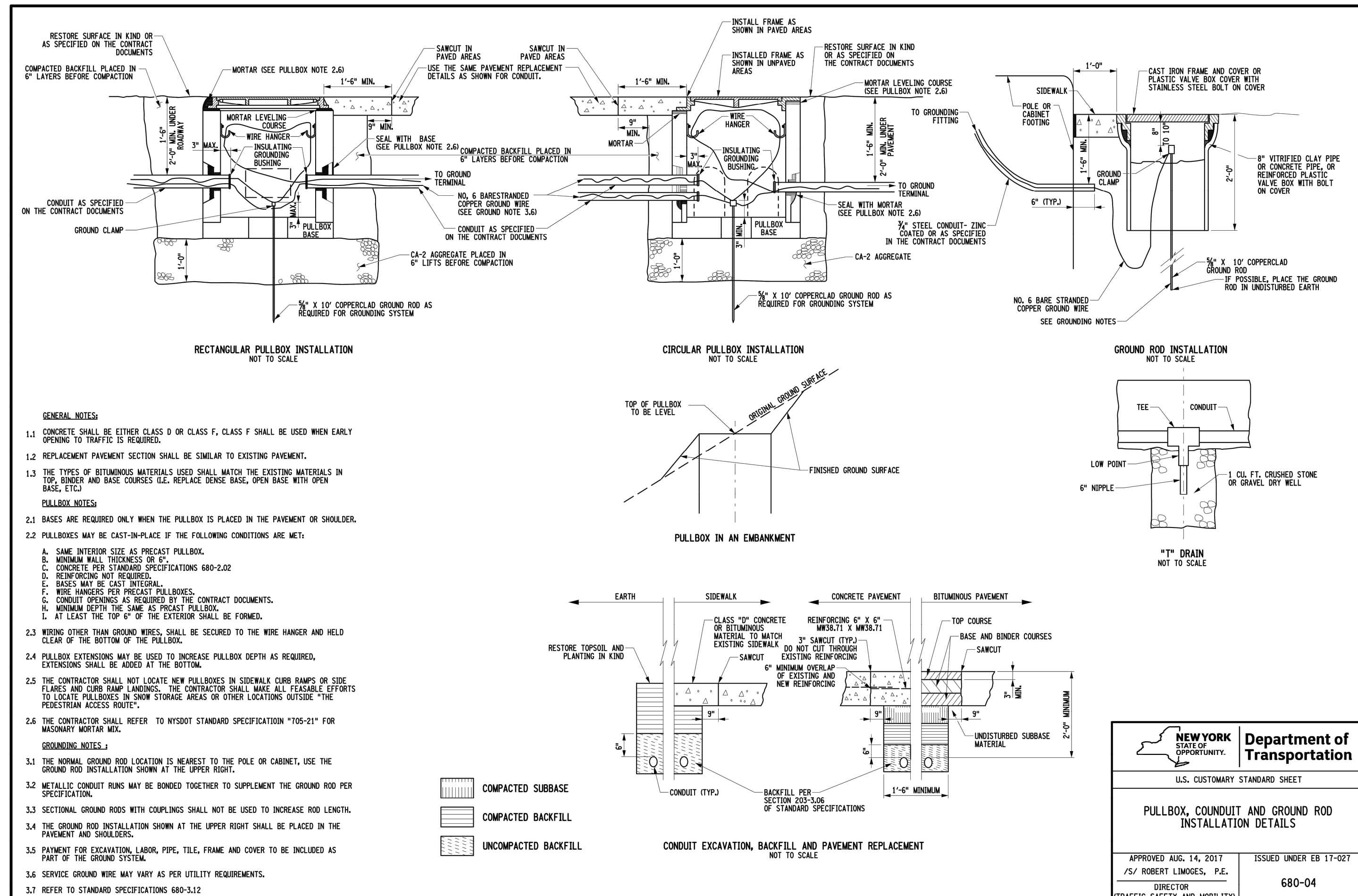
30

PRECAST STANDARD RECTANGULAR PULLBOXES, FRAMES AND COVERS

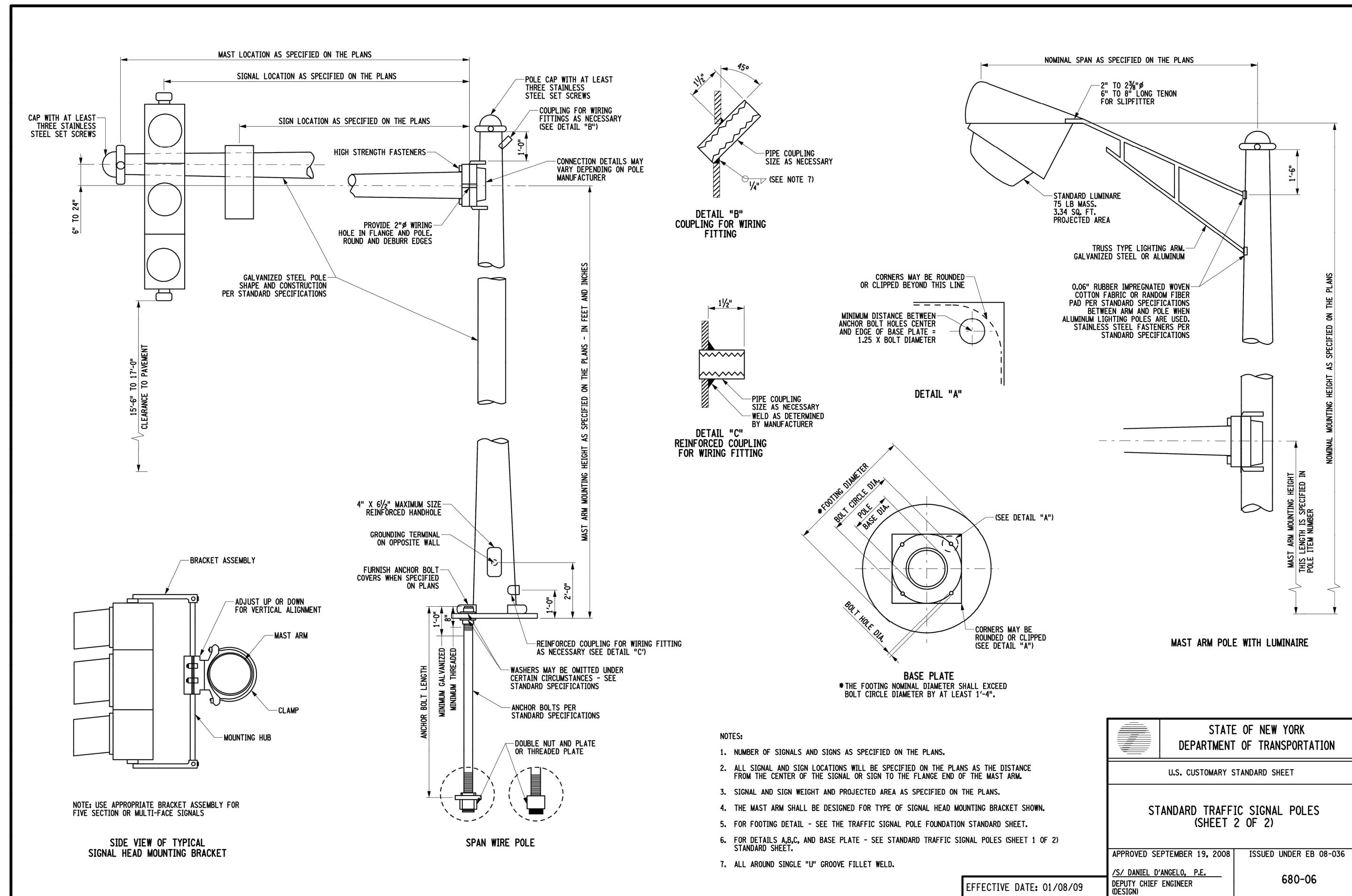


32

BASE AND POLE MOUNTED CABINET INSTALLATION DETAILS



PULLBOX, COUNDUIT AND GROUND ROD INSTALLATION DETAILS

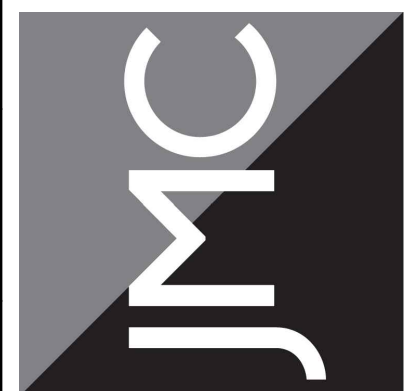


STANDARD TRAFFIC SIGNAL POLES

33

No.	Revision	Date
1.	REVISED PER NYSDOT COMMENTS	08/06/2021
2.	REVISED PER NYSDOT COMMENTS	11/24/2021
3.	REVISED PER NYSDOT COMMENTS	05/20/2022
4.	REVISED PER NYSDOT COMMENTS	08/08/2022
5.	REVISED PER NYSDOT COMMENTS	10/14/2022
6.	REVISED PER NYSDOT COMMENTS	12/09/2022

JMC Planning, Engineering, Landscape Architecture & Land Surveying, PLLC
JMC Site Development Consultants, LLC
John Meyer Consulting, Inc.
120 BEDFORD ROAD • ARMONK, NY 10504
voice 914.278.5225 • fax 914.278.4102
www.jmcpllc.com



NYSDOT DETAILS
COMMERCIAL CAMPUS AT FIELDS CORNER
NY 312 & PUGSLY ROAD
TOWN OF SOUTHEAST, NY

ANY ALTERATION OF PLANS, SPECIFICATIONS, PLATS AND REPORTS BEARING THE SEAL OF A LICENSED PROFESSIONAL ENGINEER OR LICENSED LAND SURVEYOR IS A VIOLATION OF SECTION 7209 OF THE NEW YORK STATE EDUCATION LAW, EXCEPT AS PROVIDED FOR BY SECTION 7209, SUBSECTION 2.

Drawn:	KRM	Approved:	DL
Scale:	NOT TO SCALE		
Date:	12/28/2020		
Project No:	14012/2121		
1402-DEMS	HWY-7		
Drawing No:	HP-33		