

TABLE 410-01: ADVANCE WARNING SIGN SPACING			
ROAD TYPE	DISTANCE BETWEEN SIGNS		
	A 8TJ	B 8TJ	
URBAN (≤ 30 MPH)	100	100	
URBAN (35-40 MPH)	200	200	
URBAN (45 MPH)	300	300	
RURAL	500	500	
* PRECONSTRUCTION POSTED SPEED LIMIT			

TABLE 410-02: LONGITUDINAL BUFFER SPACE AND TAPER LENGTHS			
PRECONSTRUCTION POSTED SPEED LIMIT (MPH)	LONGITUDINAL BUFFER SPACE DISTANCE (FT.) * OF SKIP LINES	TAPER LENGTH L (FT.) * OF SKIP LINES / * OF CHANNELIZING DEVICES	SHOULDER TAPER LENGTH L/3 (FT.) * OF SKIP LINES / * OF CHANNELIZING DEVICES
		FOR LANE WIDTH IN FT. / LATERAL SHIFT OF TRAFFIC FLOW PATH	FOR SHOULDER WIDTH
		10 11 12	≥ 4 FT. 5 - 7 FT. ≥ 8 FT.
25	155/4	120/3/4 120/3/4	40/1/2 40/1/2 40/1/2
30	200/5	160/4/5 160/4/5	200/5/6 40/1/2 40/1/2 40/1/2
35	250/6	200/5/6 240/6/7	240/6/7 40/1/2 40/1/2 80/2/3
40	305/8	280/7/8 320/8/9	320/8/9 40/1/2 80/2/3 80/2/3
45	360/9	440/11/12 520/13/14	560/14/15 80/2/3 80/2/3 120/3/4
50	425/11	520/13/14 560/14/15	600/15/16 80/2/3 120/3/4 160/4/5
55	495/13	560/14/15 600/15/16	680/17/18 80/2/3 120/3/4 160/4/5

TABLE 410-03: PROTECTIVE VEHICLE REQUIREMENTS			
CLOSURE TYPE	ROAD TYPE & SPEED	NON-FREEWAY	
		≥ 45 MPH	35 - 40 MPH
EXPOSURE CONDITIONS			
WORKERS ON FOOT OR VEHICLE EXPOSED TO TRAFFIC	P, TMA	P, TMA	SEE NOTE 2
OTHER HAZARDS NO WORKERS EXPOSED	P, TMA	SEE NOTE 2	SEE NOTE 2
WORKERS ON FOOT OR VEHICLE EXPOSED TO TRAFFIC	P, TMA	SEE NOTE 2	SEE NOTE 2
OTHER HAZARDS NO WORKERS EXPOSED	SEE NOTE 2	SEE NOTE 2	SEE NOTE 2

TABLE 410-04: ROLL AHEAD DISTANCE			
PRECONSTRUCTION POSTED SPEED LIMIT (MPH)	STATIONARY OPERATION	MIN	MAX
≥ 55	120/3	200/5	
45 - 50	80/2	160/4	
≤ 40	40/1	120/3	

TABLE 410-05: CHANNELIZING DEVICE APPLICATION FOR INTERMEDIATE-TERM STATIONARY WORK ZONES									
WORK ZONE PROVISIONS	STANDARD CONES	TAIL CONES	EXTRA TAIL CONES	TEMPORARY TUBULAR BARRIERS	INTERIM TUBULAR BARRIERS	VERTICAL PANELS	VERTICAL PANELS	VERTICAL PANELS	TYPE III BARRICADES
INTERMEDIATE-TERM STATIONARY WORK ZONES INVOLVE WORK THAT OCCUPIES A LOCATION FOR MORE THAN 1 DAYLIGHT PERIOD UP TO 3 CONSECUTIVE DAYS OR NIGHTTIME WORK THAT OCCUPIES A LOCATION FOR MORE THAN 1 HOUR									
SHOULDER/MERGING/SHIPPING TAPERS	20 FT. *	X						X	
MARKING FOR TRANSVERSE BUMPS ¹	N/A	X ²	X	X ²				X ²	
TRANSVERSE DEVICE WITHIN CLOSED TRAFFIC LANE AND/OR SHOULDER	800 FT.	X		X	X			X	0
REMOVAL OF EXISTING GUIDE RAIL	80 FT.	X		X	X	X		X	0
	40 FT.							X	

TABLE 410-06: REQUIRED SIGN SIZES*		
SIGN	NON-FREEWAY	FREEWAY
G20-2	36x18	48x24
W20-1	36x36	48x48
W21-5	36x36	48x48
W7-3a	24x18	36x30
G20-1	36x18	48x24
WARNING FLAG	18x18	18x18

NEW YORK STATE DEPARTMENT OF TRANSPORTATION

U.S. CUSTOMARY STANDARD SHEET

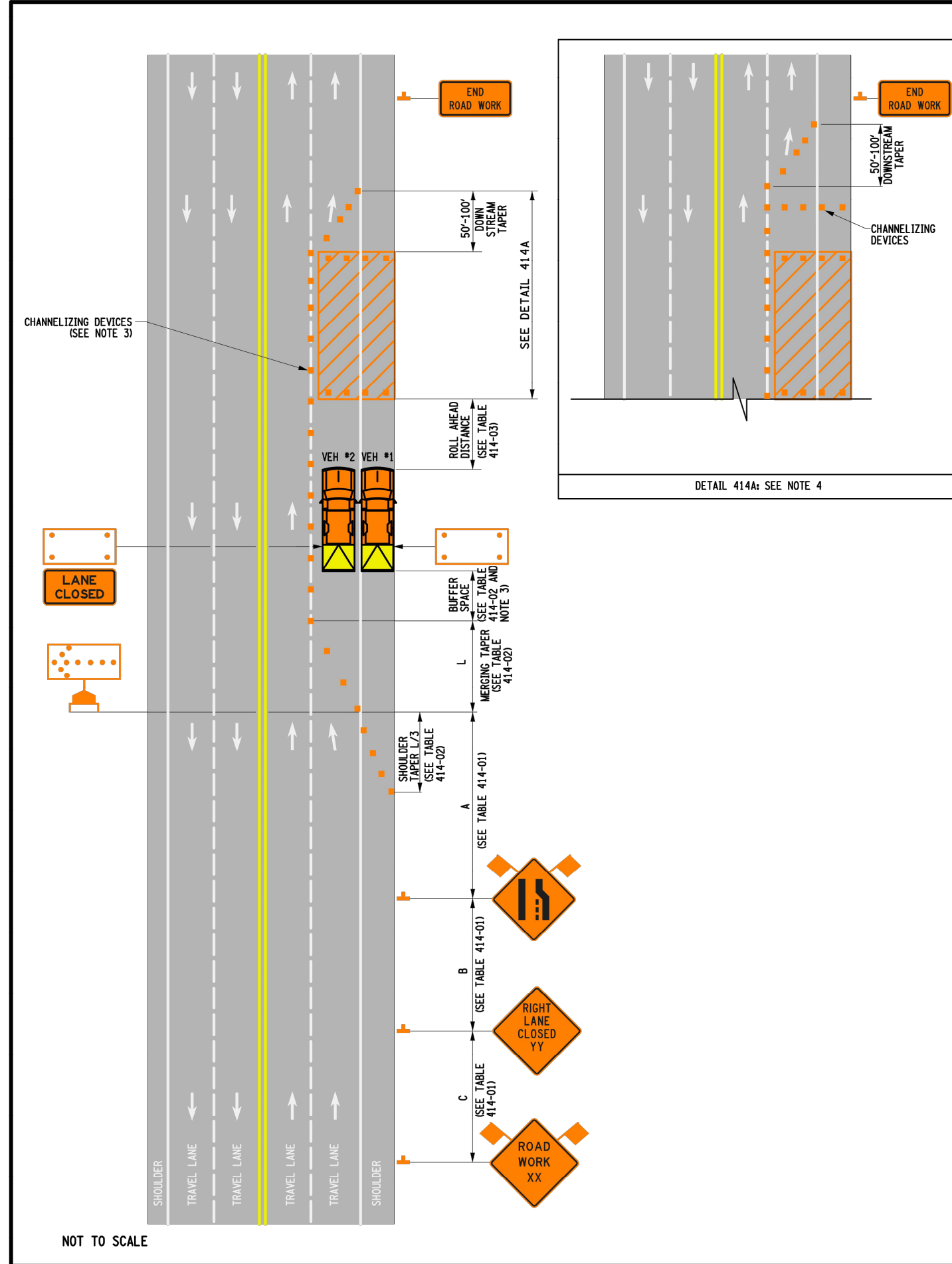
WORK ZONE TRAFFIC CONTROL TWO-LANE TWO-WAY ROADWAY SHOULDER CLOSURE INTERMEDIATE TERM OPERATION (SHEET 1 OF 2)

APPROVED APRIL 8, 2022 ISSUED UNDER ET 22-008

Robert Limoges, P.E. DIRECTOR, OTSM

619-410

73



NEW YORK STATE DEPARTMENT OF TRANSPORTATION

U.S. CUSTOMARY STANDARD SHEET

WORK ZONE TRAFFIC CONTROL MULTI LANE UNDIVIDED ROADWAY SINGLE LANE CLOSURE INTERMEDIATE TERM OPERATION (SHEET 1 OF 2)

APPROVED APRIL 8, 2022 ISSUED UNDER ET 22-008

Robert Limoges, P.E. DIRECTOR, OTSM

619-414

WORK ZONE TRAFFIC CONTROL MULTI LANE UNDIVIDED ROADWAY SINGLE LANE CLOSURE INTERMEDIATE TERM OPERATION

74

TABLE 414-01: ADVANCE WARNING SIGN SPACING			
ROAD TYPE	DISTANCE BETWEEN SIGNS		
	A 8TJ	B 8TJ	C 8TJ
URBAN (≤ 30 MPH)	100	100	100
URBAN (35-40 MPH)	200	200	200
URBAN (45 MPH)	300	300	300
RURAL	500	500	500
* PRECONSTRUCTION POSTED SPEED LIMIT			

TABLE 414-02: LONGITUDINAL BUFFER SPACE AND TAPER LENGTHS			
PRECONSTRUCTION POSTED SPEED LIMIT (MPH)	LONGITUDINAL BUFFER SPACE DISTANCE (FT.) * OF SKIP LINES	TAPER LENGTH L (FT.) * OF SKIP LINES / * OF CHANNELIZING DEVICES	SHOULDER TAPER LENGTH L/3 (FT.) * OF SKIP LINES / * OF CHANNELIZING DEVICES
		FOR LANE WIDTH IN FT. / LATERAL SHIFT OF TRAFFIC FLOW PATH	FOR SHOULDER WIDTH
		10 11 12	≥ 4 FT. 5 - 7 FT. ≥ 8 FT.
25	155/4	120/3/4 120/3/4	40/1/2 40/1/2 40/1/2
30	200/5	160/4/5 160/4/5	200/5/6 40/1/2 40/1/2 40/1/2
35	250/6	200/5/6 240/6/7	240/6/7 40/1/2 40/1/2 80/2/3
40	305/8	280/7/8 320/8/9	320/8/9 40/1/2 80/2/3 80/2/3
45	360/9	440/11/12 520/13/14	560/14/15 80/2/3 80/2/3 120/3/4
50	425/11	520/13/14 560/14/15	600/15/16 80/2/3 120/3/4 160/4/5
55	495/13	560/14/15 600/15/16	680/17/18 80/2/3 120/3/4 160/4/5

TABLE 414-03: ROLL AHEAD DISTANCE			
PRECONSTRUCTION POSTED SPEED LIMIT (MPH)	STATIONARY OPERATION	MIN	MAX
≥ 55	120/3	200/5	
45 - 50	80/2	160/4	
≤ 40	40/1	120/3	

TABLE 414-04: PROTECTIVE VEHICLE REQUIREMENTS			
CLOSURE TYPE	ROAD TYPE & SPEED	NON-FREEWAY	
		≥ 45 MPH	35 - 40 MPH
EXPOSURE CONDITIONS			
WORKERS ON FOOT OR VEHICLE EXPOSED TO TRAFFIC	P, TMA	P, TMA	SEE NOTE 2
OTHER HAZARDS NO WORKERS EXPOSED	P, TMA	SEE NOTE 2	SEE NOTE 2
WORKERS ON FOOT OR VEHICLE EXPOSED TO TRAFFIC	P, TMA	SEE NOTE 2	SEE NOTE 2
OTHER HAZARDS NO WORKERS EXPOSED	SEE NOTE 2	SEE NOTE 2	SEE NOTE 2

TABLE 414-05: CHANNELIZING DEVICE APPLICATION FOR INTERMEDIATE-TERM STATIONARY WORK ZONES									
WORK ZONE PROVISIONS	STANDARD CONES	TAIL CONES	EXTRA TAIL CONES	TEMPORARY TUBULAR BARRIERS	INTERIM TUBULAR BARRIERS	VERTICAL PANELS	VERTICAL PANELS	VERTICAL PANELS	TYPE III BARRICADES
INTERMEDIATE-TERM STATIONARY WORK ZONES INVOLVE WORK THAT OCCUPIES A LOCATION FOR MORE THAN 1 DAYLIGHT PERIOD UP TO 3 CONSECUTIVE DAYS OR NIGHTTIME WORK THAT OCCUPIES A LOCATION FOR MORE THAN 1 HOUR									
SHOULDER/MERGING/SHIPPING TAPERS	20 FT. *	X						X	
MARKING FOR TRANSVERSE BUMPS ¹	N/A	X ²	X	X ²				X ²	
TRANSVERSE DEVICE WITHIN CLOSED TRAFFIC LANE AND/OR SHOULDER	800 FT.	X		X	X			X	0
REMOVAL OF EXISTING GUIDE RAIL	80 FT.	X		X	X	X		X	0
	40 FT.							X	

TABLE 414-06: REQUIRED SIGN SIZES*		
SIGN	NON-FREEWAY	FREEWAY
G20-2	36x18	48x24
W20-1	36x36	48x48
W21-5	36x36	48x48
W7-3a	24x18	36x30
G20-1	36x18	48x24
WARNING FLAG	18x18	18x18

NEW YORK STATE DEPARTMENT OF TRANSPORTATION

U.S. CUSTOMARY STANDARD SHEET

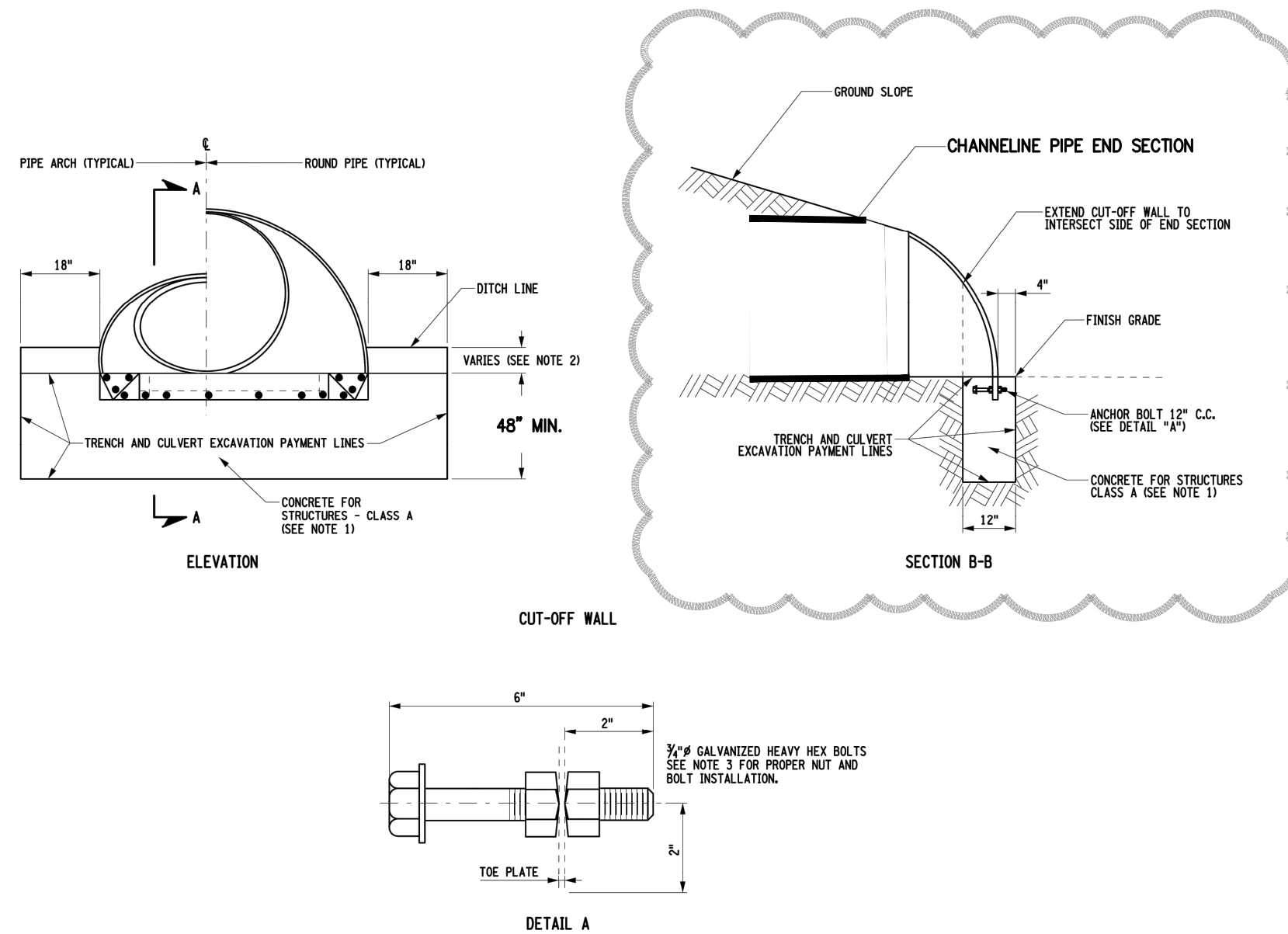
WORK ZONE TRAFFIC CONTROL MULTI LANE UNDIVIDED ROADWAY SINGLE LANE CLOSURE INTERMEDIATE TERM OPERATION (SHEET 2 OF 2)

APPROVED APRIL 8, 2022 ISSUED UNDER ET 22-008

Robert Limoges, P.E. DIRECTOR, OTSM

619-414

75



- NOTES:
- CUT-OFF WALL SHALL BE CAST IN PLACE. THE PORTION OF THE CONCRETE CUT-OFF WALL BELOW THE FINAL GRADE LINE SHALL BE CAST AGAINST UNDISTURBED SOIL. IF FEASIBLE, THE CONCRETE CUT-OFF WALL SHALL BE POURED AFTER THE END SECTION IS INSTALLED.
 - VARIABLES BASED ON DIMENSIONS OF SPECIFIED END SECTION.
 - ANCHOR BOLTS SHALL MEET THE REQUIREMENTS OF E107-20. THE NUTS AND BOLTS SHALL BE SO INSTALLED THAT THE FINAL ASSEMBLY, THE BOLT AND ONE OF THE NUTS IS EMBEDDED IN CONCRETE, THAT THE CHAMFERED PARTS OF THE NUTS FACE EACH OTHER, AND SECURE THE TOE PLATE BETWEEN THEM.

CUT-OFF WALLS FOR CHANNELINE END SECTIONS

76

WORK ZONE TRAFFIC CONTROL MULTI LANE UNDIVIDED ROADWAY SINGLE LANE CLOSURE INTERMEDIATE TERM OPERATION

75

Date	Revision	Comments
09/02/2022	1.	REVISED PER NYSOT COMMENTS
10/14/2022	2.	REVISED PER NYSOT COMMENTS
12/09/2022	3.	REVISED PER NYSOT COMMENTS

JMC Planning, Engineering, Landscape Architecture & Land Surveying, PLLC
JMC Site Development Consultants, LLC
John Meyer Consulting, Inc.
120 BEDFORD ROAD • NEWARK, NY 10504
voice 914.278.5225 • fax 914.273.4102
www.jmcpllc.com

JMC

NYSDOT DETAILS
COMMERCIAL CAMPUS AT FIELDS CORNER
NY 312 & PUGSLEY ROAD
TOWN OF SOUTHEAST, NEW YORK

ANY ALTERATION OF PLANS, SPECIFICATIONS, PLATS AND REPORTS BEARING THE SEAL OF A LICENSED PROFESSIONAL ENGINEER OR LICENSED LAND SURVEYOR IS A VIOLATION OF SECTION 7209 OF THE NEW YORK STATE EDUCATION LAW, EXCEPT AS PROVIDED FOR BY SECTION 7209, SUBSECTION 2.

Drawn:	KRM	Approved:	DL
Scale:	NOT TO SCALE		
Date:	08/08/2022		
Project No:	14012/21121		
1402-DETAILS	HWY-18		
Drawing No:	HP-44		

HP-44