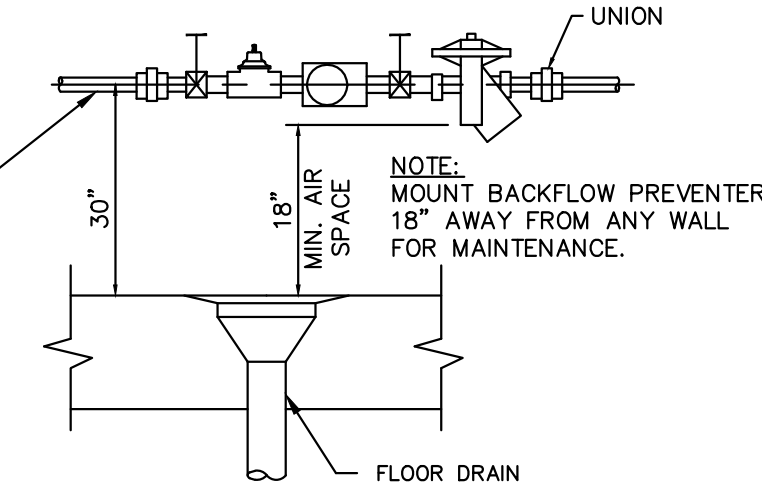
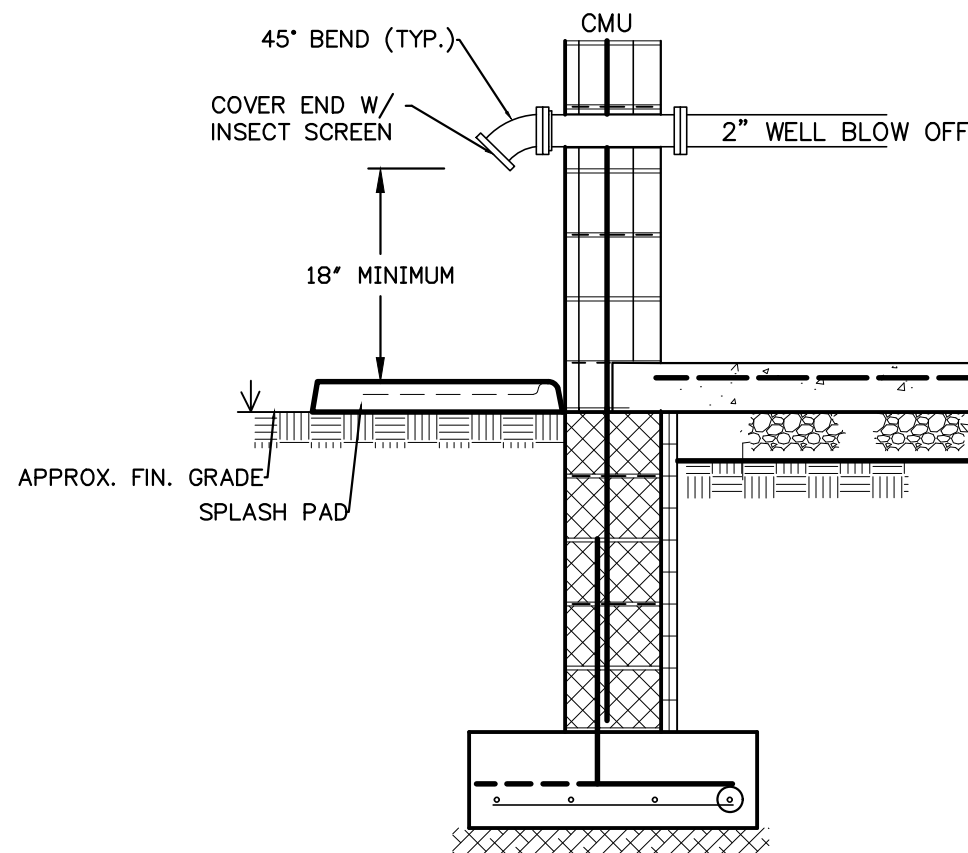


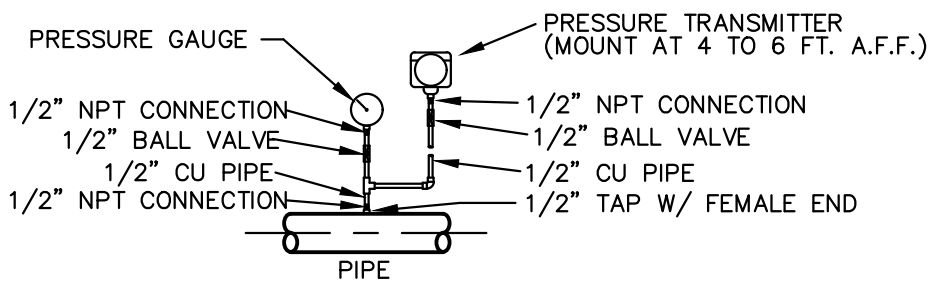
- GENERAL NOTES:
1. FIRE PROTECTION SYSTEM TO BE SUPPLIED AND INSTALLED IN ACCORDANCE WITH "NFPA 20".
 2. FIRE PUMP PIPING SHALL BE INSTALLED AND TESTED IN ACCORDANCE WITH "NFPA 24".
 3. INTERIOR PIPING FOR FIRE PUMP SUCTION AND DISCHARGE SHALL BE CLASS 52 DUCTILE IRON (DI).
 4. INTERIOR PIPING FOR WELL SERVICE AND BOOSTER PUMP LINES SHALL BE SCHEDULE 80 PVC.
 5. CONTRACTOR SHALL PROVIDE A PORTABLE, SELF-CONTAINED EMERGENCY EYEWASH STATION. PROVIDE PUREFLOW 1000 MODEL AND ADEQUATE FLUID CARTRIDGES FOR START-UP, OR EQUAL.
 6. REFERENCE MANUFACTURE'S LITERATURE FOR ADDITIONAL INFORMATION REGARDING INSTALLATION.
 7. SPILL CONTAINMENT PALLET TO BE 110% OF THE VOLUME OF THE STORAGE VAT (MIN.). PALLET SHOWN IS A 66-GALLON FLEXIBLE SIDEWALL PLASTIC SPILL PALLET AS MANUFACTURED BY ULTRATECH (48"L X 24"W X 14"H).
 8. A ONE (1) MONTH SUPPLY OF SODIUM HYPOCHLORITE SHALL BE AVAILABLE ON-SITE AT ALL TIMES.
 9. THE DIESEL TANK(S) FOR THE EMERGENCY GENERATOR AND FIRE PUMP SHALL INCLUDE 110% CONTAINMENT OF THE TANK VOLUME(S).
 10. THE ENTIRE PERIMETER OF THE PUMP BUILDING SITE TO BE ILLUMINATED FOR SECURITY PURPOSES. PROVIDE SHIELDING AS APPLICABLE AND MEET ALL APPLICABLE ORDINANCES RELATED TO LIGHTING.
 11. PUMP BUILDING DOORS AND ACCESS GATE TO THE SITE SHALL BE LOCKED AT ALL TIMES UNLESS OPERATIONS PERSONNEL ARE ON-SITE. COMMERCIAL GRADE, ONE-SIDED LOCKS TO BE USED ON ALL DOORS. HINGES TO BE PLACED ON THE INTERIOR TO PROTECT THEM FROM VANDALISM.
 12. "AUTHORIZED PERSONNEL ONLY" SIGNS ARE TO BE LOCATED AT ALL ENTRANCES TO THE PUMP BUILDING, THE PUMP BUILDING SITE AND THE REMOTE WELL LOCATIONS.



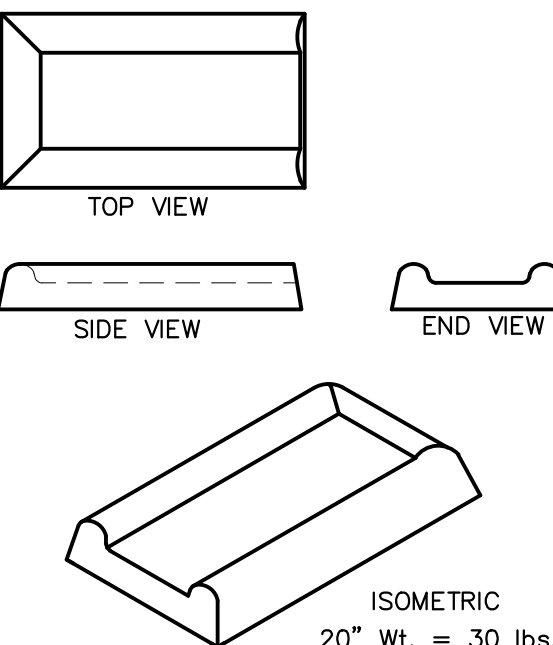
REDUCED PRESSURE ZONE
BACKFLOW PREVENTER
INSTALLATION DETAIL
NOT TO SCALE



TYPICAL BLOWOFF DETAIL
NOT TO SCALE



TYPICAL SENSING LINE/GAUGE CONNECTION DETAIL
N.T.S.



TYPICAL SPLASH PAD DETAIL
NOT TO SCALE

DRAWING NOTES:

THE DOCUMENTS CONTAINED HEREIN ARE BEING SUBMITTED FOR APPROVAL BY A PUBLIC AGENCY (OR AGENCIES). THESE DOCUMENTS ARE CONSIDERED PRELIMINARY AND NOT IN FINAL FORM UNTIL THE DOCUMENTS ARE REVIEWED AND APPROVED BY THE APPLICABLE PUBLIC AGENCY (OR AGENCIES). THESE DOCUMENTS MAY BE REVISED TO REFLECT RESOLUTION OF COMMENTS BY ANY AGENCY PRIOR TO FINAL ACTION BY THE AGENCY (OR AGENCIES). ADDITIONAL SUBMISSIONS OF THESE DOCUMENTS IS POSSIBLE.

WARNING: IT IS A VIOLATION OF THE STATE REGISTRATION LAW FOR ANY PERSON TO IN ANY WAY ALTER THIS DOCUMENT BEARING THE SEAL OF A PROFESSIONAL ENGINEER, UNLESS THAT PERSON IS ACTING UNDER THE SPECIFIC DIRECTION OF THE LICENSED PROFESSIONAL ENGINEER.

PRELIMINARY-
NOT FOR
CONSTRUCTION

REV.	DESCRIPTION	BY	DATE	APP'D.	SEAL
2	PER NYSDOH 10/21/21 COMMENTS	MPG	11/15/21		
1	PER NYSDOH 7/14/21 COMMENTS	MPG	8/3/21		

MILNES
MILNES ENGINEERING INC.
PLANNING • DESIGNING • ENGINEERING
SURVEYING • CONSTRUCTION SERVICES
12 FREAR HILL ROAD
TUNKHANNOCK, PA 18657
(570) 836-2145

TITLE: MECHANICAL PLAN AND DETAILS COMMERCIAL CAMPUS AT FIELDS CORNER PUBLIC WATER SUPPLY PERMIT TOWN OF SOUTHEAST, PUTNAM COUNTY, NY			
DRAWN: MPG	DATE: 4/2021	CHK'D:	DATE:
SCALE: AS SHOWN		APP'D:	DATE:
AUTOCAD FILE		DRAWING NUMBER	REV.
PROJECT NUMBER E-2121		M-1	2