

GENERAL NOTES:

- A.

GENERAL NOTES, SYMBOLS LIST AND DETAILS ARE APPLICABLE TO ALL DRAWINGS WITHIN DIVISION 23.
- B.

COORDINATE WORK OF DIVISION 23 WITH THAT OF OTHER SECTIONS.
- C.

READ SPECIFICATIONS FOR REQUIREMENTS PERTAINING TO THESE DOCUMENTS.
- D.

FITTINGS SHOWN ARE TO BE PROVIDED. NO SUBSTITUTES SHALL BE ALLOWED WITHOUT PRIOR CONSENT FROM ARCHITECT/ENGINEER.
- E.

INSTALL DUCTWORK AND PIPING CONCEALED, UNLESS SPECIFIED OTHERWISE.
- F.

ALL WORK SHALL BE COORDINATED WITH ALL TRADES INVOLVED. OFFSETS IN PIPING AND DUCTS (INCLUDING DIVIDED DUCTS) AND TRANSITIONS AROUND OBSTRUCTIONS SHALL BE PROVIDED AT NO ADDITIONAL COST TO THE OWNER.
- G.

VERIFY ALL EQUIPMENT CONNECTIONS WITH MANUFACTURER'S CERTIFIED DRAWINGS. VERIFY AND PROVIDE DUCT TRANSITIONS TO FURNISHED EQUIPMENT. FIELD VERIFY AND ALL DIMENSIONS BEFORE FABRICATION.
- H.

ALL MATERIAL AND EQUIPMENT SHALL BE NEW.
- I.

INSTALL ALL EQUIPMENT PER MANUFACTURER'S INSTRUCTIONS AND LOCAL, STATE, AND NATIONAL CODES.
- J.

MECHANICAL CONTRACTOR SHALL PROVIDE ALL PENETRATIONS THROUGH WALLS, FLOORS AND ROOFS NECESSARY FOR INSTALLATION OF MECHANICAL SYSTEMS. DO NOT DRILL, CORE OR CUT ANY PORTION OF COLUMNS, BEAMS, JOISTS OR BRIDGING RIBS.
- K.

MECHANICAL CONTRACTOR TO PROVIDE CUSTOM COLOR SELECTION FOR WALL CAPS, ROOF JACKS, VENT TERMINATIONS & LOUVERS. ARCHITECT TO SELECT COLOR OF EQUIPMENT.
- L.

PROVIDE INSULATED REFRIGERANT PIPING BETWEEN EACH FAN COIL UNIT & HEAT PUMP UNIT. PIPING SHALL BE SIZED AND INSTALLED PER MANUFACTURER'S INSTRUCTIONS. CAULK & SEAL REFRIGERANT PIPE PENETRATION THRU EXTERIOR WALL, WEATHER-TIGHT.
- M.

COORDINATE FINAL DUCTWORK ROUTING & FITTINGS WITH APPROVED TRUSS DESIGN. MODIFY LAYOUT AS NECESSARY TO ROUTE DUCTWORK THRU TRUSS WEBS.
- N.

REFER TO MANUFACTURER'S INSTRUCTIONS FOR SIZING & INSTALLATION OF REFRIGERANT PIPING IN "LONG LINE" APPLICATIONS.
- O.

PROVIDE MASTIC SEALANT ON ALL JOINTS, LONGITUDINAL & TRANSVERSE SEAMS AND CONNECTIONS IN DUCTWORK. MASTIC SEALANT SHALL BE LISTED & LABELED IN ACCORDANCE WITH UL 181A OR UL 181B. DUCTWORK SHALL BE INSPECTED BY OWNER'S REPRESENTATIVE PRIOR TO INSTALLATION OF INSULATION. SEALANT SHALL BE LOW VOC.
- P.

WALL CAPS & ROOF JACKS SHALL BE CORROSION RESISTANT GALVANIZED STEEL WITH BIRD SCREEN AND BACK DRAFT DAMPER. CUSTOM COLOR SELECTION BY ARCHITECT.
- Q.

MOUNTING HEIGHT FOR THERMOSTATS SHALL BE 48" TO TOP OF COVER, ABOVE FINISHED FLOOR.
- R.

MAINTAIN A MINIMUM 36" CLEARANCE BETWEEN SUPPLY DIFFUSERS/ REGISTERS AND SMOKE DETECTORS.
- S.

COORDINATE DUCTWORK ROUTING AND INSTALLATION WITH OTHER TRADES.
- T.

OR IN-UNIT DEVICES (THERMOSTATS), REFER TO ARCHITECTURAL & ELEVATION PLANS FOR EXACT LOCATIONS & HEIGHTS. COORDINATE 1' DISTANCE FROM EDGE OF WALL.
- U.

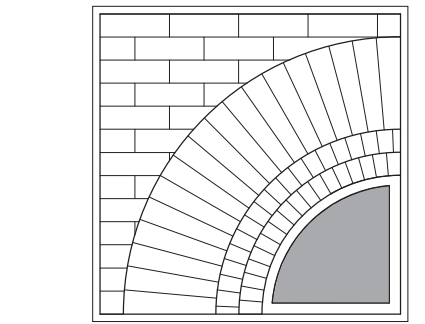
CONTRACTOR SHALL PROVIDE REFRIGERANT CHARGE TEST CERTIFICATION. CHARGE TEST TO BE PREFORMED BY A QUALIFIED TECHNIION.

HVAC SYMBOL LIST			
SYMBOL	DESCRIPTION	SYMBOL	DESCRIPTION
	EXISTING WORK TO BE REMOVED		COMPRESSED AIR
	POINT OF CONNECTION		VENT
	POINT OF DISCONNECTION		BOILER BLOW DOWN
	DRAWING KEYNOTE		CONDENSER WATER SUPPLY
	DEMOLITION KEYNOTE		CONDENSER WATER RETURN
	THOUSAND BTU/HOUR		CHILLED WATER SUPPLY
	NOT TO SCALE		CHILLED WATER RETURN
	EXISTING		DRAIN
	ACOUSTIC THERMAL LINING - 1-1/2" THICK		FUEL OIL FILL
	ACOUSTIC THERMAL LINING - 2" THICK		FUEL OIL GAUGE
	DOUBLE WALL LINED DUCT		FUEL OIL SUPPLY
	FEET PER MINUTE		FUEL OIL RETURN
	CUBIC FEET PER MINUTE		FUEL OIL TANK VENT
	ABOVE FINISHED FLOOR		GAS
	ACCESS DOOR		GLYCOL SUPPLY
	WALL TO WALL		GLYCOL RETURN
	GENERAL CONTRACTOR		HEAT PUMP WATER SUPPLY
	MECHANICAL CONTRACTOR		HEAT PUMP WATER RETURN
	PLUMBING CONTRACTOR		HOT WATER SUPPLY
	ELECTRICAL CONTRACTOR		HOT WATER RETURN
	NORMALLY OPEN		LOW PRESSURE STEAM
	NORMALLY CLOSED		LOW PRESSURE CONDENSATE
	FLEXIBLE DUCTWORK		MEDIUM PRESSURE STEAM
	DUCT SECTION - FLAT OVAL (FO)		MEDIUM PRESSURE CONDENSATE
	ROUND DUCT - IN INCHES		HIGH PRESSURE STEAM
	DUCT SECTION - SUPPLY		HIGH PRESSURE CONDENSATE
	DUCT SECTION - RETURN		PUMPED CONDENSATE
	WIDTH A x DEPTH B		REFRIGERANT DISCHARGE
	TRANSITION SQUARE TO ROUND		REFRIGERANT LIQUID
	RISE IN DUCT - IN DIRECTION OF AIRFLOW		REFRIGERANT SUCTION
	DROP IN DUCT - IN DIRECTION OF AIRFLOW		HOT GAS
	SUPPLY DUCT TURNING UP OR DOWN		VACUUM
	RETURN DUCT TURNING UP OR DOWN		DOMESTIC COLD WATER
	SUPPLY/RETURN RECTANGULAR MAIN RECTANGULAR BRANCH		TRIPLE DUTY VALVE
	SUPPLY/RETURN RECTANGULAR MAIN ROUND BRANCH		GLOBE VALVE
	SUPPLY/RETURN ROUND MAIN ROUND BRANCH		BALL VALVE
	SUPPLY/RETURN ROUND MAIN ROUND BRANCH		GATE VALVE
	SUPPLY/RETURN ROUND MAIN ROUND BRANCH		CONTROL VALVE
	SUPPLY/RETURN ROUND MAIN ROUND BRANCH		THREE WAY CONTROL VALVE
	SUPPLY/RETURN ROUND MAIN ROUND BRANCH		CHECK VALVE
	SUPPLY/RETURN ROUND MAIN ROUND BRANCH		BALANCING VALVE
	SUPPLY/RETURN ROUND MAIN ROUND BRANCH		BUTTERFLY VALVE
	SUPPLY/RETURN ROUND MAIN ROUND BRANCH		RELIEF VALVE
	SUPPLY/RETURN ROUND MAIN ROUND BRANCH		PRESSURE REDUCING VALVE
	SUPPLY/RETURN ROUND MAIN ROUND BRANCH		PRESSURE/TEMPERATURE TEST PLUG
	SUPPLY/RETURN ROUND MAIN ROUND BRANCH		SINGLE LINE PIPE CONTINUED
	SUPPLY/RETURN ROUND MAIN ROUND BRANCH		DOUBLE LINE PIPE OR ROUND DUCT CONTINUED
	SUPPLY/RETURN ROUND MAIN ROUND BRANCH		DOUBLE LINE RECTANGULAR DUCT CONTINUED
	SUPPLY/RETURN ROUND MAIN ROUND BRANCH		AIR FLOW
	SUPPLY/RETURN ROUND MAIN ROUND BRANCH		PIPE ANCHOR
	SUPPLY/RETURN ROUND MAIN ROUND BRANCH		PIPE GUIDE
	SUPPLY/RETURN ROUND MAIN ROUND BRANCH		EXPANSION COMPENSATOR WITH GUIDES
	SUPPLY/RETURN ROUND MAIN ROUND BRANCH		PRE-FAB EXPANSION LOOP
	SUPPLY/RETURN ROUND MAIN ROUND BRANCH		STRAINER
	SUPPLY/RETURN ROUND MAIN ROUND BRANCH		PRESSURE GAUGE
	SUPPLY/RETURN ROUND MAIN ROUND BRANCH		THERMOMETER
	SUPPLY/RETURN ROUND MAIN ROUND BRANCH		UNION
	SUPPLY/RETURN ROUND MAIN ROUND BRANCH		AIR VENT
	SUPPLY/RETURN ROUND MAIN ROUND BRANCH		THERMOSTATIC TRAP
	SUPPLY/RETURN ROUND MAIN ROUND BRANCH		FLOAT & THERMOSTATIC TRAP
	SUPPLY/RETURN ROUND MAIN ROUND BRANCH		THERMODYNAMIC TRAP
	SUPPLY/RETURN ROUND MAIN ROUND BRANCH		BUCKET TRAP
	SUPPLY/RETURN ROUND MAIN ROUND BRANCH		DIRECTION OF FLOW
	SUPPLY/RETURN ROUND MAIN ROUND BRANCH		REDUCER
	SUPPLY/RETURN ROUND MAIN ROUND BRANCH		CAP OR PLUG
	SUPPLY/RETURN ROUND MAIN ROUND BRANCH		ELBOW DOWN
	SUPPLY/RETURN ROUND MAIN ROUND BRANCH		ELBOW UP
	SUPPLY/RETURN ROUND MAIN ROUND BRANCH		BOTTOM TAP
	SUPPLY/RETURN ROUND MAIN ROUND BRANCH		AUTOMATIC AIR DAMPER
	SUPPLY/RETURN ROUND MAIN ROUND BRANCH		FIRE DAMPER
	SUPPLY/RETURN ROUND MAIN ROUND BRANCH		SMOKE DAMPER
	SUPPLY/RETURN ROUND MAIN ROUND BRANCH		BACK DRAFT DAMPER
	SUPPLY/RETURN ROUND MAIN ROUND BRANCH		FLEX CONNECTOR - DUCTWORK
	SUPPLY/RETURN ROUND MAIN ROUND BRANCH		MOTORIZED DAMPER
	SUPPLY/RETURN ROUND MAIN ROUND BRANCH		BLAST GATE
	SUPPLY/RETURN ROUND MAIN ROUND BRANCH		VOLUME DAMPER
	SUPPLY/RETURN ROUND MAIN ROUND BRANCH		SUCTION DIFFUSER
	SUPPLY/RETURN ROUND MAIN ROUND BRANCH		FLEXIBLE CONNECTOR - PIPING
	SUPPLY/RETURN ROUND MAIN ROUND BRANCH		DRAIN VALVE WITH HOSE CONNECTION, CAP AND CHAIN
	SUPPLY/RETURN ROUND MAIN ROUND BRANCH		WATER FLOW SENSOR
	SUPPLY/RETURN ROUND MAIN ROUND BRANCH		WATER TEMPERATURE SENSOR
	SUPPLY/RETURN ROUND MAIN ROUND BRANCH		STATIC PRESSURE SENSOR
	SUPPLY/RETURN ROUND MAIN ROUND BRANCH		HUMIDISTAT
	SUPPLY/RETURN ROUND MAIN ROUND BRANCH		TEMPERATURE SENSOR
	SUPPLY/RETURN ROUND MAIN ROUND BRANCH		CARBON DIOXIDE SENSOR
	SUPPLY/RETURN ROUND MAIN ROUND BRANCH		CARBON DIOXIDE SENSOR
	SUPPLY/RETURN ROUND MAIN ROUND BRANCH		GAS SENSOR
	SUPPLY/RETURN ROUND MAIN ROUND BRANCH		PNEUMATIC/ELECTRIC THERMOSTAT
	SUPPLY/RETURN ROUND MAIN ROUND BRANCH		THERMOSTAT/SENSOR WITH GUARD

Issued for Bidding 9/12/2023

ISSUES AND REVISIONS

© THIS DRAWING AND THE CONTENTS THEREOF ARE THE SOLE AND COPYRIGHTED PROPERTY OF BUTLER ROWLAND MAYS ARCHITECTS, LLP AND MAY NOT BE ALTERED, COPIED OR REPRODUCED BY ANY METHOD FOR ANY PURPOSE WITHOUT THE EXPRESS WRITTEN CONSENT OF BUTLER ROWLAND MAYS ARCHITECTS, LLP.



**BUTLER  
ROWLAND  
MAYS**  
ARCHITECTS, LLP

57 West High Street  
Ballston Spa  
New York 12020

P: 518•885•1255  
F: 518•885•1266  
www.brmarchitects.com

**Phase 1 Interior  
Improvements to the  
Lower Level  
for the**

**The  
Beekman  
Library**

11 Town Center Boulevard  
Hopewell Junction, NY 12533

PROJECT

**ME ENGINEERING**  
Mechanical/Electrical Engineering Consultants  
Capital District | Rochester | Buffalo | Syracuse  
400 STATE STREET, 4TH FLOOR  
ROCHESTER, NY 14609 518.535.5771  
www.meeengineering.com

CONSULTANT

CONSULTANT



**STAMP** Reg. Exp: 05/31/2024  
Cert. of Auth: 0018443

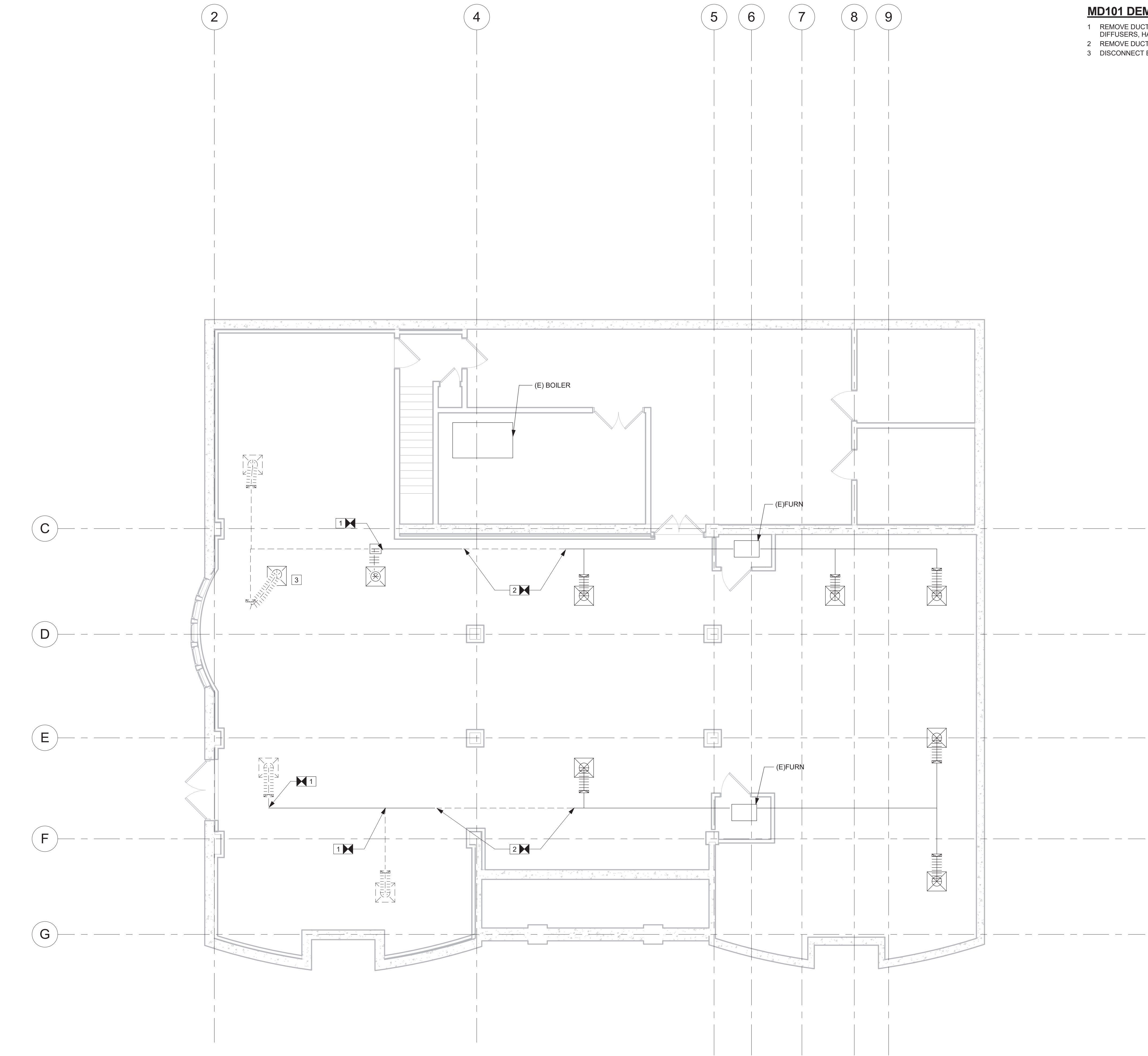
CALLED NORTH

DWN. BY: HSK  
SCALE: 1/8" = 1'-0"  
JOB NO.: 22-48-09  
DATE: 09/01/2023

**GENERAL  
NOTES,  
SYMBOL LIST  
&  
ABBREVIATIONS**

TITLE

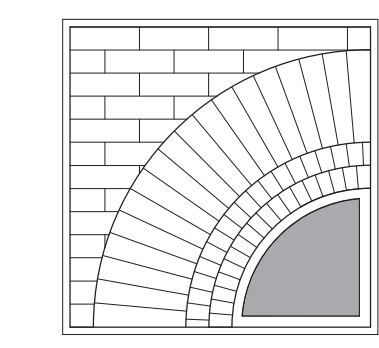
**M001**  
DWG. NO.



1 LOWER LEVEL - DEMO PLAN  
3/16" = 1'-0"

**MD101 DEMOLITION NOTES**

- 1 REMOVE DUCTWORK BACK TO THIS LOCATION AND CAP AIR TIGHT. INCLUDING DIFFUSERS, HANGERS AND ALL ACCESSORIES.
- 2 REMOVE DUCTWORK BETWEEN DISCONNECT SYMBOLS. CAP DUCTWORK AIR TIGHT.
- 3 DISCONNECT EXISTING DIFFUSER FOR RECONNECTION.



**BUTLER  
ROWLAND  
MAYS**  
ARCHITECTS, LLP

57 West High Street  
Ballston Spa  
New York 12020

P: 518•885•1255  
F: 518•885•1266  
www.brmarchitects.com

**Phase 1 Interior  
Improvements to the  
Lower Level  
for the**

**The  
Beekman  
Library**

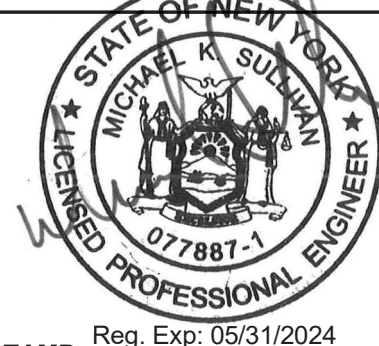
11 Town Center Boulevard  
Hopewell Junction, NY 12533

**PROJECT**

**ME ENGINEERING**  
Mechanical/Electrical Engineering Consultants  
Capital District | Rochester | Buffalo | Syracuse  
400 STATE STREET, 4TH FLOOR  
ROCHESTER, NY 14609 518.338.2171  
www.meengineering.com

**CONSULTANT**

**CONSULTANT**



**STAMP** Reg. Exp: 05/31/2024  
Cert. of Auth: 0018443

**CALLLED NORTH**

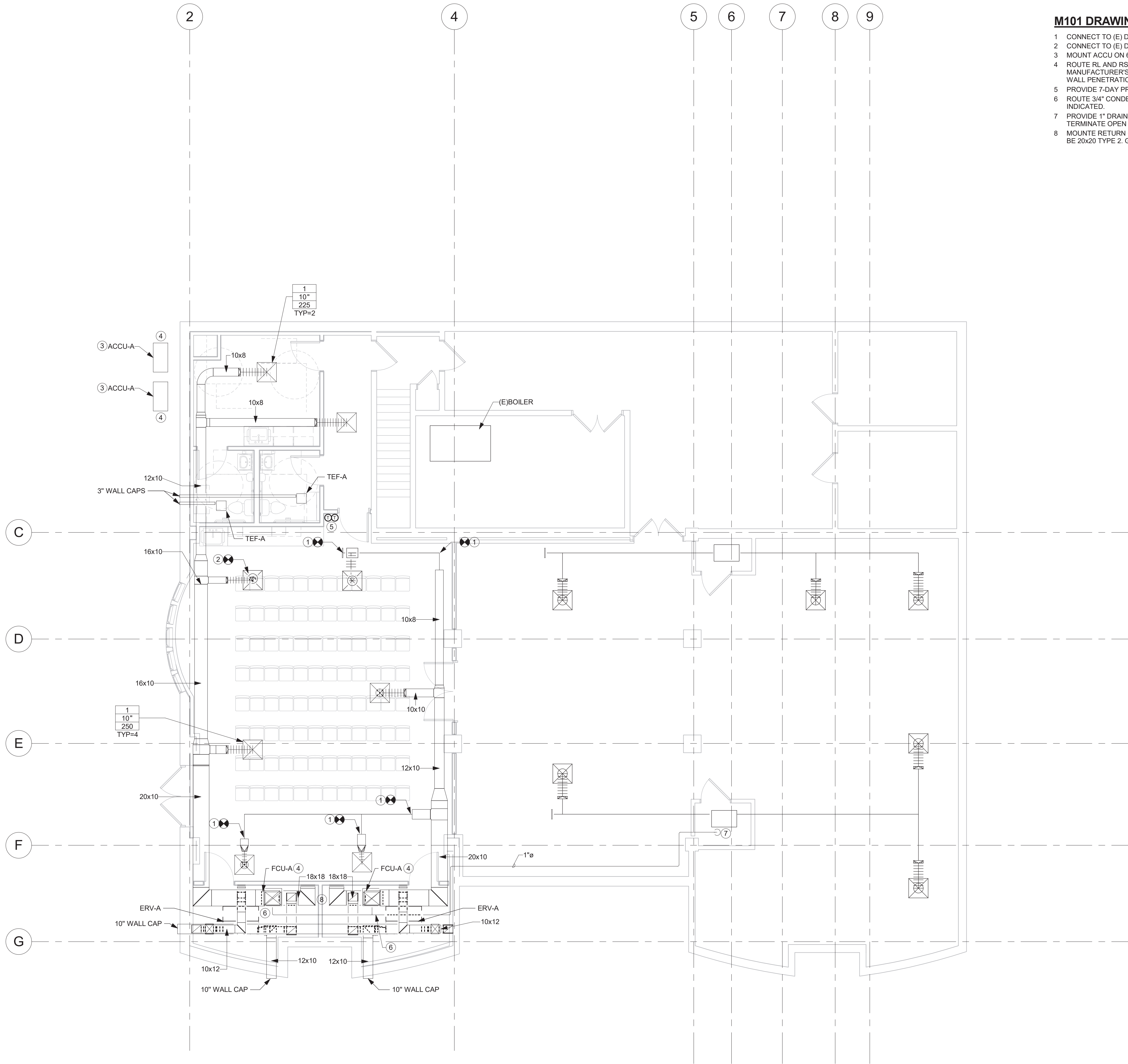
DWN. BY: HSK  
SCALE: 3/16" = 1'-0"  
JOB NO.: 22-46-09  
DATE: 09/01/2023

**HVAC -  
BASEMENT  
DEMOLITION  
PLAN**

**TITLE**

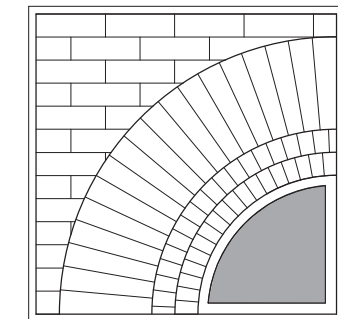
**MD101**  
DWG. NO.





**M101 DRAWING NOTES**

- 1 CONNECT TO (E) DUCT AT THIS LOCATION.
- 2 CONNECT TO (E) DIFFUSER AT THIS LOCATION. BALANCE TO 250 CFM.
- 3 MOUNT ACCU ON 6" THICK CONCRETE PAD PER DETAIL 3/M501.
- 4 ROUTE RL AND RS FROM INDOOR FCU TO OUTDOOR ACCU. SIZE PIPING PER MANUFACTURER'S INSTALLATION INSTRUCTIONS. ROUTE PIPING ABOVE CEILING. SEAL WALL PENETRATION WEATHER TIGHT.
- 5 PROVIDE 7-DAY PROGRAMMABLE THERMOSTAT AT THIS LOCATION. WIRE BACK TO FCU.
- 6 ROUTE 3/4" CONDENSATE DRAIN FROM FCU CONDENSATE PUMP TO LOCATION INDICATED.
- 7 PROVIDE 1" DRAIN DOWN TO 2" ABOVE FLOOR AND ROUTE TO ABOVE FLOOR DRAIN. TERMINATE OPEN ENDED.
- 8 MOUNT RETURN GRILLE ON WALL 6" ABOVE FINISHED FLOOR. RETURN GRILLE SHALL BE 20x20 TYPE 2. GRILLE SHALL BE DUCTED BACK TO FCU-A INTAKE.



**BUTLER  
ROWLAND  
MAYS**  
ARCHITECTS, LLP

57 West High Street  
Ballston Spa  
New York 12020

P: 518•885•1255  
F: 518•885•1266  
www.brmarchitects.com

**Phase 1 Interior  
Improvements to the  
Lower Level  
for the**

**The  
Beekman  
Library**

11 Town Center Boulevard  
Hopewell Junction, NY 12533

**PROJECT**

**ME ENGINEERING**  
Mechanical/Electrical Engineering Consultants  
Capital District | Rochester | Buffalo | Syracuse  
400 STATE STREET, 4TH FLOOR  
ROCHESTER, NY 14609 518.535.5771  
www.meeengineering.com

**CONSULTANT**

**CONSULTANT**



**STAMP** Reg. Exp: 05/31/2024  
Cert. of Auth: 0018443

**CALLED NORTH**

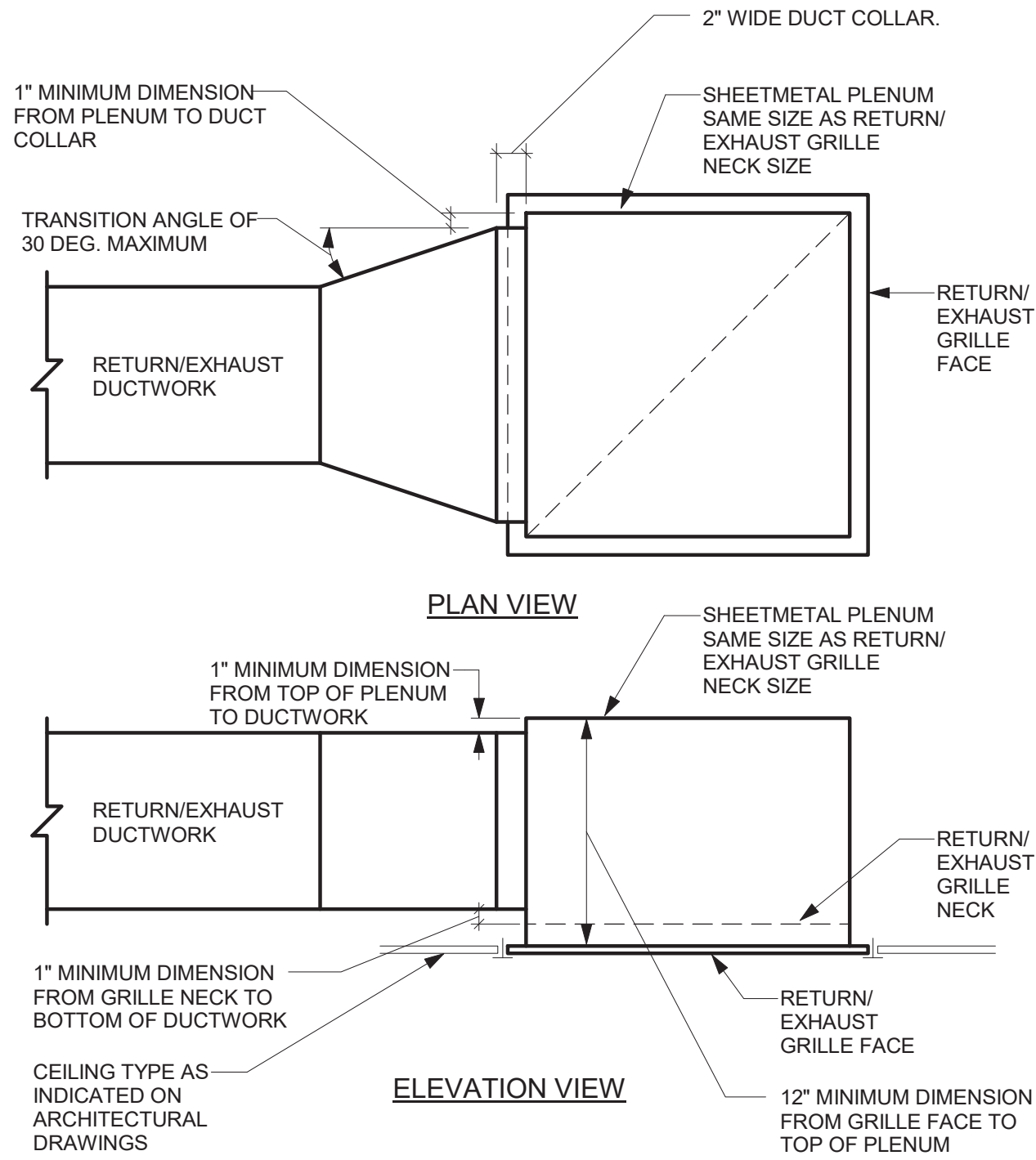
DWN. BY: Author  
SCALE: 3/16" = 1'-0"  
JOB NO.: 22-46-09  
DATE: 09/01/2023

**HVAC -  
BASEMENT  
PLAN**

**TITLE**

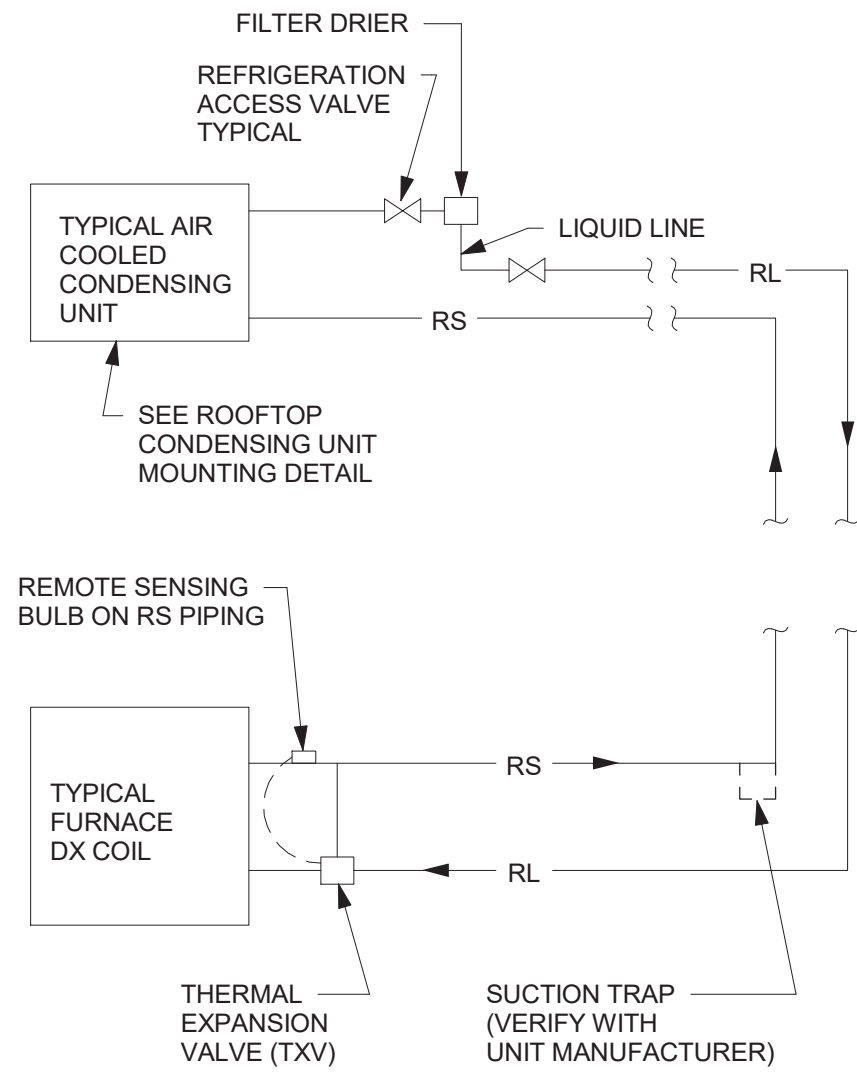
**M101**  
DWG. NO.

**1 LOWER LEVEL - PLAN**  
3/16" = 1'-0"



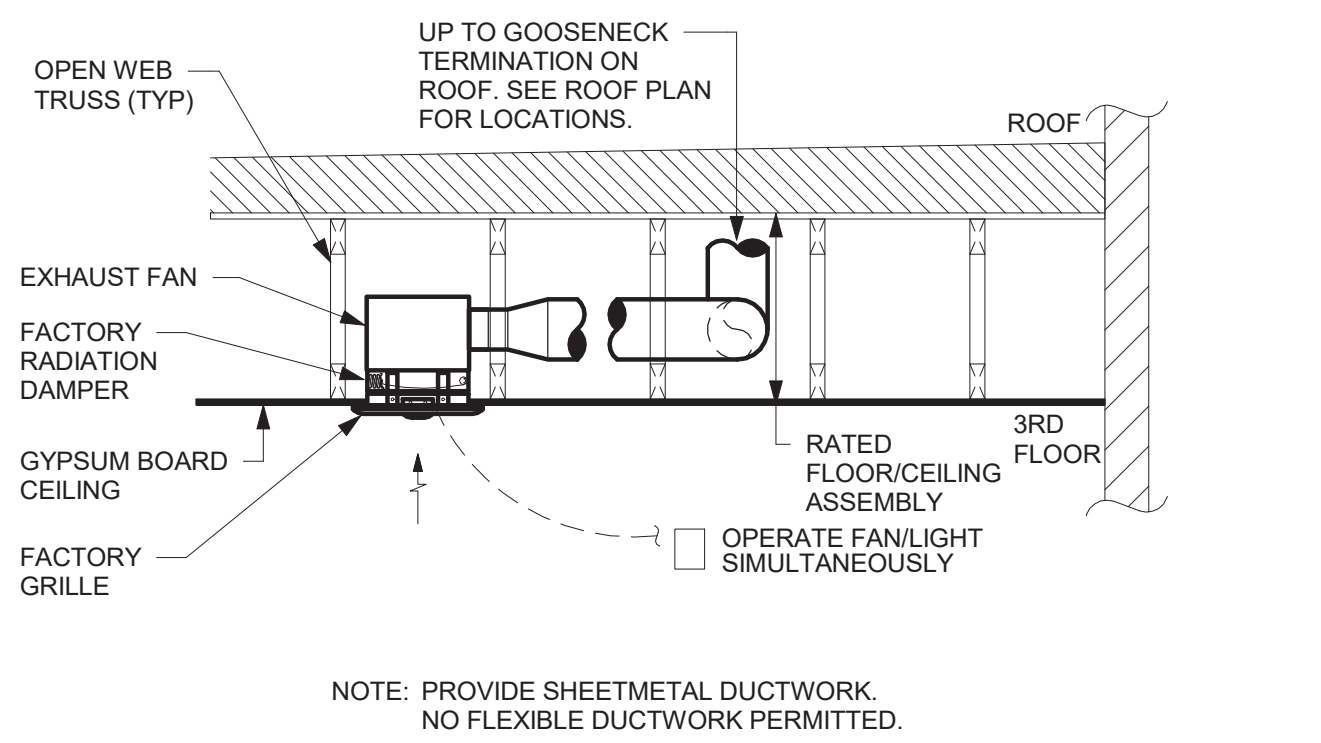
- DETAIL NOTES:
- A. PAINT INSIDE OF PLENUM BOX FLAT BLACK IF INTERNAL SOUND LINING IS NOT SPECIFIED.
- B. ALSO APPLICABLE TO REGISTERS.

1 RETURN/EXHAUST GRILLE PLENUM DETAIL - DUCTED  
NOT TO SCALE



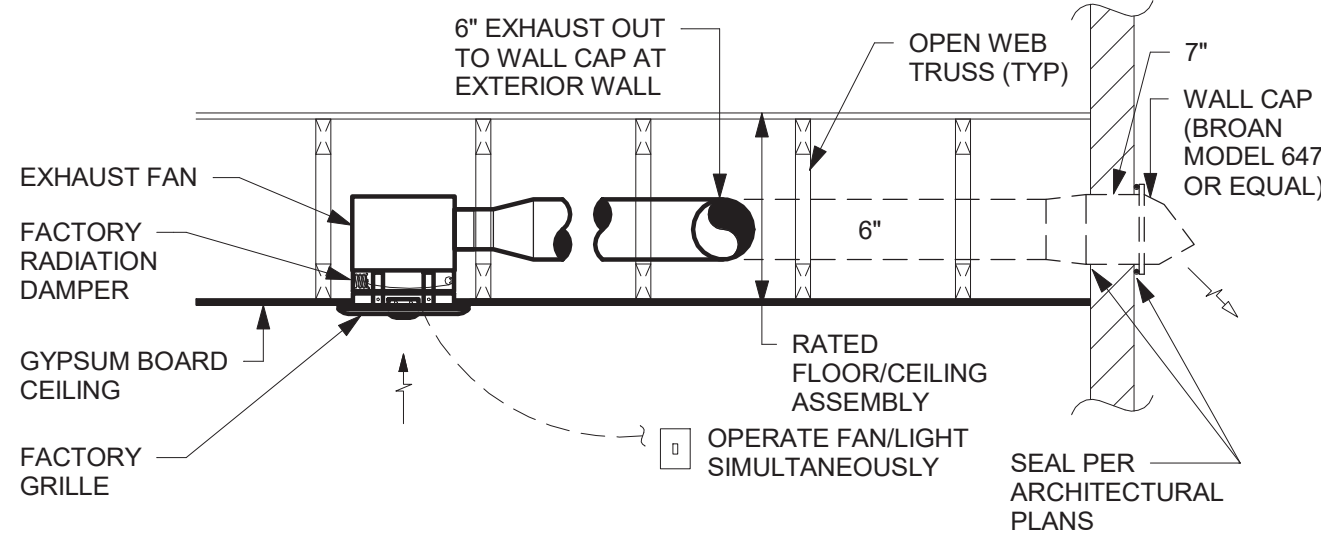
- DETAIL NOTES:
- A. CONFIRM REFRIGERANT LINE LENGTHS WITH MANUFACTURER FOR EACH SYSTEM.
- B. VERIFY THE REQUIREMENT FOR A SUCTION LINE TRAP AT THE BASE OF THE REFRIGERANT SUCTION (RS) LINE WITH THE MANUFACTURER.
- C. THIS DETAIL IS INTENDED TO SHOW THE GENERAL SYSTEM COMPONENTS. THE SYSTEM SHALL BE PIPED IN ACCORDANCE WITH THE MANUFACTURERS RECOMMENDATIONS.

3 DX PIPING CONNECTIONS DETAIL - CONDENSING UNIT ABOVE EVAPORATOR COIL  
NOT TO SCALE



NOTE: PROVIDE SHEETMETAL DUCTWORK.  
NO FLEXIBLE DUCTWORK PERMITTED.

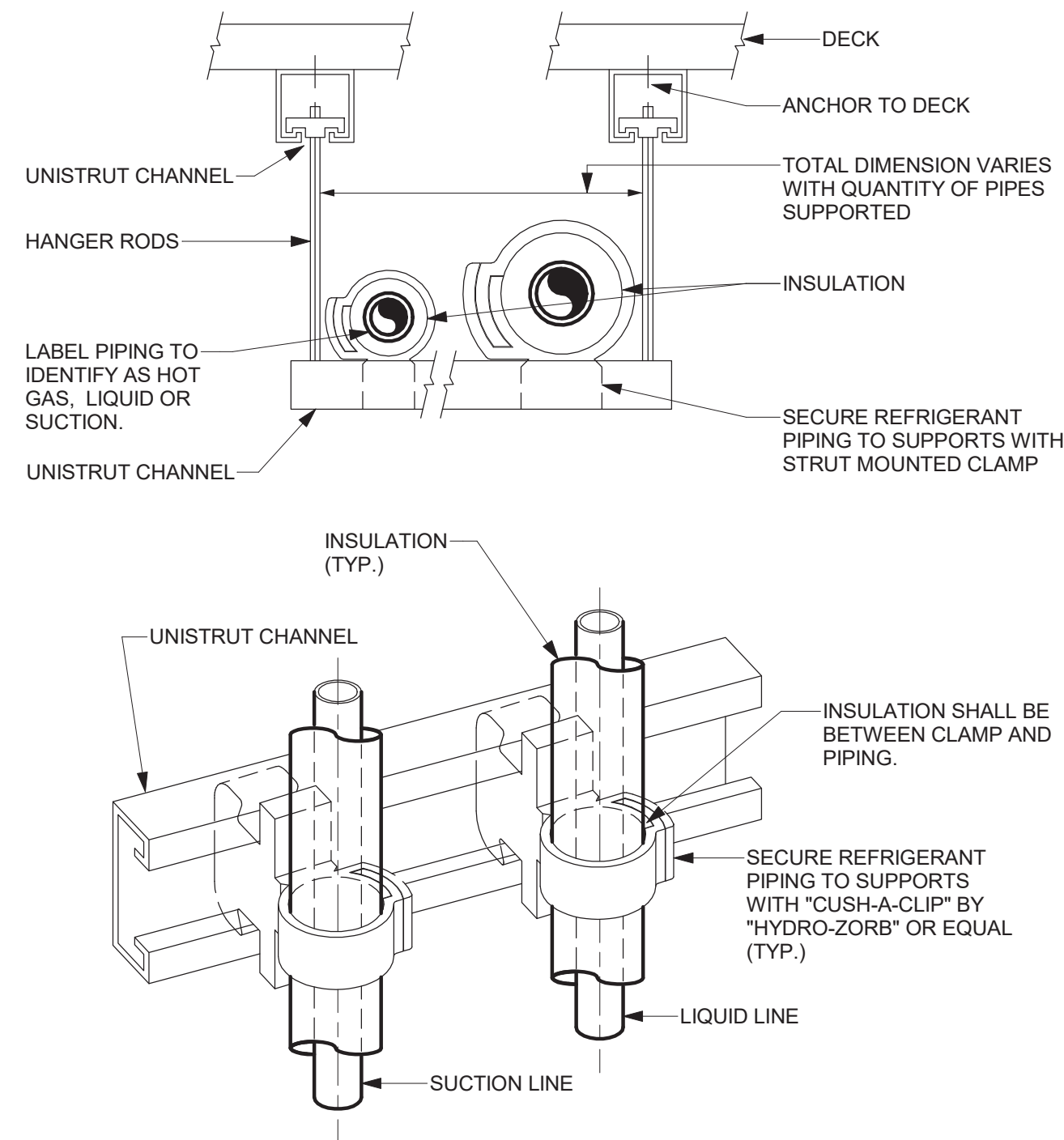
EXHAUST FAN MOUNTED IN RATED ASSEMBLY - THIRD FLOOR



NOTE: PROVIDE SHEETMETAL DUCTWORK.  
NO FLEXIBLE DUCTWORK PERMITTED.

EXHAUST FAN MOUNTED IN RATED ASSEMBLY - LOWER FLOORS

2 TYPICAL EXHAUST FAN MOUNTING DETAIL  
NOT TO SCALE

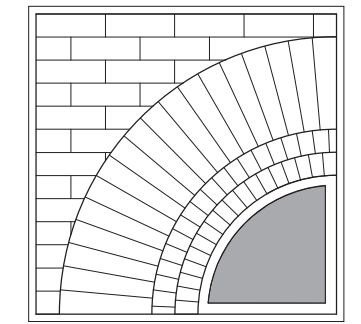


4 REFRIGERANT PIPE SUPPORT DETAIL  
NOT TO SCALE

Issued for Bidding 9/12/2023

ISSUES AND REVISIONS

© THIS DRAWING AND THE CONTENTS THEREOF ARE THE SOLE AND COPYRIGHTED PROPERTY OF BUTLER ROWLAND MAYS ARCHITECTS, LLP AND MAY NOT BE ALTERED, COPIED OR REPRODUCED BY ANY METHOD FOR ANY PURPOSE WITHOUT THE EXPRESS WRITTEN CONSENT OF BUTLER ROWLAND MAYS ARCHITECTS, LLP.



**BUTLER  
ROWLAND  
MAYS**  
ARCHITECTS, LLP

57 West High Street  
Ballston Spa  
New York 12020

P: 518•885•1255  
F: 518•885•1266  
www.brmarchitects.com

Phase 1 Interior  
Improvements to the  
Lower Level  
for the

The  
Beekman  
Library

11 Town Center Boulevard  
Hopewell Junction, NY 12533

PROJECT

**ME ENGINEERING**  
Mechanical/Electrical Engineering Consultants  
Capital District | Rochester | Buffalo | Syracuse  
400 STATE STREET, 4TH FLOOR  
ROCHESTER, NY 14609 518.535.5771  
www.meeengineering.com

CONSULTANT

CONSULTANT



STAMP Reg. Exp: 05/31/2024  
Cert. of Auth: 0018443

CALLED NORTH

DWN. BY: HSK  
SCALE: NOT TO SCALE  
JOB NO.: 22-48-09  
DATE: 09/01/2023

MECHANICAL  
DETAILS

TITLE

**M501**

DWG. NO.



SPLIT SYSTEM AIR CONDITIONING UNIT SCHEDULE - HEAT PUMP TYPE																															
UNIT NO		LOCATION		INDOOR UNIT			OUTDOOR UNIT										HEATING (5 DEG F)		EFFICIENCY		FILTER MERV RATING	MANUFACTURER & MODEL No.		REMARKS							
INDOOR	OUTDOOR	INDOOR	OUTDOOR	UNIT TYPE	AIR FLOW (CFM)	COOLING CAPACITY (BTUH)	MINIMUM CAPACITY (BTUH)	EAT (DEG. F)		VOLTS	PHASE	MCA	FAN FLA	SOUND PRESSURE (dBA)	REFRIGERANT	VOLTS	PHASE	MCA	FAN FLA	BREAKER SIZE (AMPS)		EAT (DEG. F)			SOUND PRESSURE (dBA)	RATED CAPACITY (MBTUH)	MAXIMUM CAPACITY (MBTUH)	MINIMUM (COP)	MINIMUM (SEER)	INDOOR UNIT	OUTDOOR UNIT
FCU-A	ACCU-A	GRADE	ROOF	VERTICAL AHU	1040	42000	17000	80	67	208	1	5.5	4.5	44	R-410A	208	1	36	0.4		95.0	75.0	51	48	38.4	1.9	15.4	-	MITSUBISHI PVAA42AA7	MITSUBISHI PUZHA42NKA1	1, 2

REMARKS:  
1. CONDENSATE PUMP.  
2. PROVIDE 7 DAY PROGRAMMABLE THERMOSTAT.

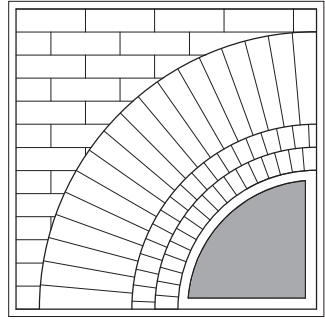
PACKAGED ENERGY RECOVERY VENTILATION UNIT SCHEDULE - STATIC PLATE CORE HEAT EXCHANGER																							
UNIT NO.	LOCATION	SERVICE	MODE	SUPPLY FAN		EXHAUST FAN		ELECTRICAL CHARACTERISTICS				TOTAL EFF. (%)	PERFORMANCE CONDITIONS								FILTER MERV RATING	MANUFACTURER & MODEL No.	REMARKS
				AIR FLOW (CFM)	E.S.P. (In. WC)	AIR FLOW (CFM)	E.S.P. (In. WC)	VOLTS	PHASE	MCA	MOP		O.A.		R.A.		S.A.		E.A.				
													DB	WB	DB	WB	DB	WB	DB	WB			
ERV-A	VARIOUS	MULTIPURPOSE	SUMMER	85	0.75	85	0.75	120	1	10.1	15	54.4	91.4	73.8	75.0	62.5	79.5	68	---	---	8/8	RENEWAIRE EV PREMIUM S	1
			WINTER	85	0.75	85	0.75	120	1	10.1	15	71.3	1.7	0.4	70.0	51.4	51.4	40.2	---	---			

REMARKS:  
1. INTERLOCK WITH FCU-A OPERATION.

FAN SCHEDULE																			
UNIT NO.	LOCATION	SERVICE	FAN CHARACTERISTICS							MOTOR CHARACTERISTICS						MANUFACTURER & MODEL NO.	REMARKS		
			TYPE	BLADE TYPE	CFM	S.P. (In. WC)	FAN RPM	SONES	DRIVE	WATTS	HP	VOLTS	HZ	PHASE	STARTER				
TEF-A	VARIOUS	EXHAUST	CLG	FC	80	0.1	---	0.3	DIRECT	(7.0)	---	120	60	1	INCLUDED	PANASONIC WHISPERGREEN SELECT FV-05-11VKS1	2,3,4,5,6,7		

REMARKS:  
1. TWO SPEED, CONTINUOUS OPERATION. SET LOW SPEED FOR 35 CFM.  
2. TWO SPEED, CONTINUOUS OPERATION. SET LOW SPEED FOR 25 CFM.  
3. DC BRUSHLESS MOTOR  
4. BACKDRAFT DAMPER  
5. PROVIDE WITH FACTORY LED LIGHT KIT  
6. PROVIDE WITH A MOTION SENSOR  
7. PROVIDE WITH FACTORY RADIATION DAMPERS

REGISTER GRILLE AND DIFFUSER SCHEDULE					
TYPE	APPLICATION	MATERIAL	FINISH	MANUFACTURER & MODEL NO.	REMARKS
1	SUPPLY	STEEL	WHITE	TITUS MODEL OMNI	
2	SUPPLY	STEEL	WHITE	TITUS MODEL 272-RL/RS	
3	SUPPLY	STEEL	WHITE	CONTINENTAL 32	
A	RETURN/EXHAUST	STEEL	WHITE	TITUS MODEL 350/355-RL/RS	
B	RETURN/EXHAUST	ALUMINUM	ANODIZED	CONTINENTAL G35	
C	TRANSFER	ALUMINUM	ANODIZED	LIMA MODEL 700	



**BUTLER  
ROWLAND  
MAYS**  
ARCHITECTS, LLP

57 West High Street  
Ballston Spa  
New York 12020

P: 518•885•1255  
F: 518•885•1266  
www.brmarchitects.com

**Phase 1 Interior  
Improvements to the  
Lower Level  
for the**

**The  
Beekman  
Library**

11 Town Center Boulevard  
Hopewell Junction, NY 12533

PROJECT

**ME ENGINEERING**  
*Mechanical/Electrical Engineering Consultants*  
Capital Districts | Rochester | Buffalo | Syracuse  
400 STATE STREET, 4TH FLOOR  
ROCHESTER, NY 14609 518.535.0171  
www.meeengineering.com

CONSULTANT

CONSULTANT



**STAMP** Reg. Exp: 05/31/2024  
Cert. of Auth: 0018443

CALLED NORTH

DWN. BY: HSK  
SCALE:  
JOB NO.: 22-46-09  
DATE: 09/01/2023

**HVAC  
SCHEDUELS**

TITLE

**M601**  
DWG. NO.