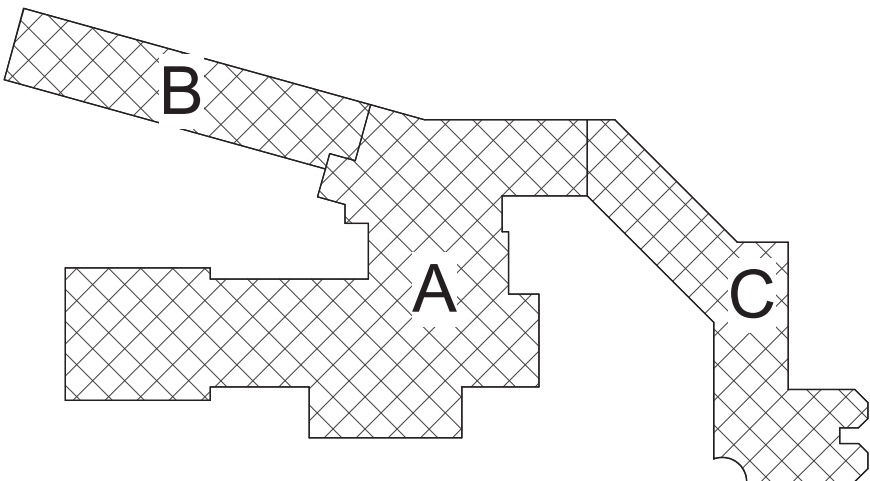


2 First Floor Key Plan  
1/16" = 1'-0"

1 Ground Floor Key Plan  
1/16" = 1'-0"

- General Notes**
- A. THE FOLLOWING GENERAL NOTES APPLY TO ALL "AM" SERIES DRAWINGS.
  - B. REFER TO ALL CONTRACT DOCUMENTS, DRAWINGS AND SPECIFICATIONS, FOR DETAILED STANDARDS AND REQUIREMENTS. REPORT UNSAFE OR UNSATISFACTORY CONDITIONS IN WRITING TO ARCHITECT AND RESOLVE ISSUES BEFORE PROCEEDING.
  - C. WORK INCLUDES ALL LABOR AND MATERIALS REQUIRED TO PROVIDE COMPLETE WORKING SYSTEMS.
  - D. COORDINATE PHASING REQUIREMENTS AT JOB MEETINGS AND ON WORK SCHEDULES.
  - E. DO NOT SCALE DRAWINGS. PIPING AND DUCTWORK ARE SHOWN DIAGRAMMATICALLY. IT IS NOT POSSIBLE TO SHOW EVERY TRANSITION, FITTING, ASPECT RATIO CHANGE, ETC.. PROVIDE AS REQUIRED TO FIT WITHIN STRUCTURAL CONSTRAINTS. EXAMINE CONDITIONS UNDER WHICH THE WORK IS TO BE PERFORMED AND VERIFY ALL ACCESS, LOCATIONS, DIMENSIONS, ARRANGEMENTS, ELECTRICAL CHARACTERISTICS AND INTERFERENCE IN THE FIELD PRIOR TO BID.
  - F. VERIFY EXTENT OF CEILING WORK SHOWN ELSEWHERE IN THE CONTRACT DOCUMENTS. PROVIDE FOR ADDITIONAL CEILING SYSTEM REMOVAL, PROTECTION, AND REINSTALLATION AS REQUIRED FOR CONTRACT WORK.
  - G. DEMOLITION DRAWINGS SHOW THE GENERAL SCOPE OF ITEMS AND SYSTEMS TO BE REMOVED. IT IS NOT THE INTENT TO SHOW ALL ITEMS TO BE REMOVED. FIELD VERIFY AND REMOVE ALL ASSOCIATED ITEMS BACK TO POINT OF CONTINUED SERVICE, UNLESS OTHERWISE NOTED. VERIFY WHAT ALL EQUIPMENT SERVES PRIOR TO REMOVAL.
  - H. GIVE ALL REMOVED EQUIPMENT TO THE OWNER. DELIVER ON SITE WHERE DESIGNATED BY THE OWNER. PROMPTLY REMOVE FROM THE SITE AND LEGALLY DISPOSE OF ANY SUCH ITEMS DECLINED BY OWNER.
  - I. IF UNANTICIPATED MECHANICAL, ELECTRICAL, OR STRUCTURAL CONFLICTS ARE ENCOUNTERED, INVESTIGATE AND REPORT BOTH NATURE AND EXTENT OF THE CONFLICT. RE-ROUTE WORK AS REQUIRED.
  - J. CUT, DRILL, OR OTHERWISE CREATE OPENINGS AS NEATLY AS POSSIBLE, AS REQUIRED FOR THE INDICATED CONTRACT WORK. PROVIDE SUPPORT AS REQUIRED FOR AND USE METHODS LEAST LIKELY TO DAMAGE ELEMENTS TO REMAIN. PRIOR TO WORK, VERIFY LOCATIONS OF ALL STRUCTURAL MEMBERS INCLUDING CROSS BRACING, ELECTRICAL WIRING, PLUMBING, ETC. PROMPTLY NOTIFY ARCHITECT OF ANY CONFLICTS. DO NOT CUT ANY STRUCTURAL MEMBERS OR OTHER SERVICES UNTIL SPECIFICALLY DIRECTED TO DO SO, PENDING RECEIPT OF DIRECTIVE. REARRANGE SCHEDULE AS NECESSARY TO CONTINUE OVERALL JOB PROGRESS WITHOUT DELAY.
  - K. PATCH ALL DISTURBANCES RESULTING FROM DEMOLITION OR NEW WORK TO MATCH SURROUNDING SURFACES. PATCH FOLLOWING DEMOLITION, AND AGAIN FOLLOWING WORK, WHERE HOLES REMAIN FROM REMOVALS, INFILL AND PATCH TO MATCH UNLESS HOLE IS TO BE REUSED.
  - L. PROTECT ALL CONTRACT EQUIPMENT, ELEMENTS TO REMAIN, OWNER'S BELONGINGS, AND EQUIPMENT TO BE REUSED OR RETAINED BY OWNER DURING ALL CONTRACT WORK. AT NO ADDITIONAL COST TO OWNER, REPAIR OR REPLACE ITEMS WHICH ARE DAMAGED.
  - M. THOROUGHLY CLEAN FOLLOWING DEMOLITION AND BEFORE BEGINNING CONTRACT INSTALLATIONS. THOROUGHLY CLEAN AGAIN DURING AND FOLLOWING CONTRACT WORK AS REQUIRED. LEAVE ALL WORK AREAS CLEANER THAN FOUND. LEGALLY DISPOSE OF ALL CONSTRUCTION DEBRIS.
  - N. PROVIDE TEMPORARY PIPING, DUCT, HEAT, WEATHERPROOFING, ETC. TO SERVICES TO REMAIN UNTIL PERMANENT INSTALLATIONS CAN BE MADE.
  - O. ALL EXCESS MATERIALS AND SCRAPS ARE CONTRACTOR'S PROPERTY. PROMPTLY REMOVE FROM SITE UNLESS SPECIFICALLY DIRECTED OTHERWISE.
  - P. EXISTING HVAC COMPONENTS IN THIS BUILDING MAY CONTAIN, BE IN PROXIMITY TO, OR, WORK ON THEM MAY CAUSE DISTURBANCE OF, ASBESTOS CONTAINING OR OTHER HAZARDOUS MATERIALS. REFER TO ABATEMENT SERIES DRAWINGS AND SPECIFICATIONS COMPLETE FOR ADDITIONAL INFORMATION.
  - Q. SEAL ALL FLOOR, WALL, AND CEILING PENETRATIONS PER FIRE-RESISTANCE RATINGS NOTED ON AG-SERIES DRAWINGS, BUT NOT LESS THAN 1-HOUR, AND IN ACCORDANCE WITH SECTION 07 84 13 - PENETRATION FIRESTOPPING. THIS INCLUDES ALL NEW PENETRATIONS AND EXISTING UNFIRESSTOPPED PENETRATIONS CREATED BY REMOVALS, AS REQUIRED TO PERFORM THE WORK.



Key Plan  
N.T.S.

S.E.D. Control No. 13-02-00-01-0-002-021

Rev. No.:	Date:	Description:



complex world  
CLEAR SOLUTIONS

Tetra Tech Engineers, Architects  
& Landscape Architects, P.C.



Beacon City School District  
Beacon, New York

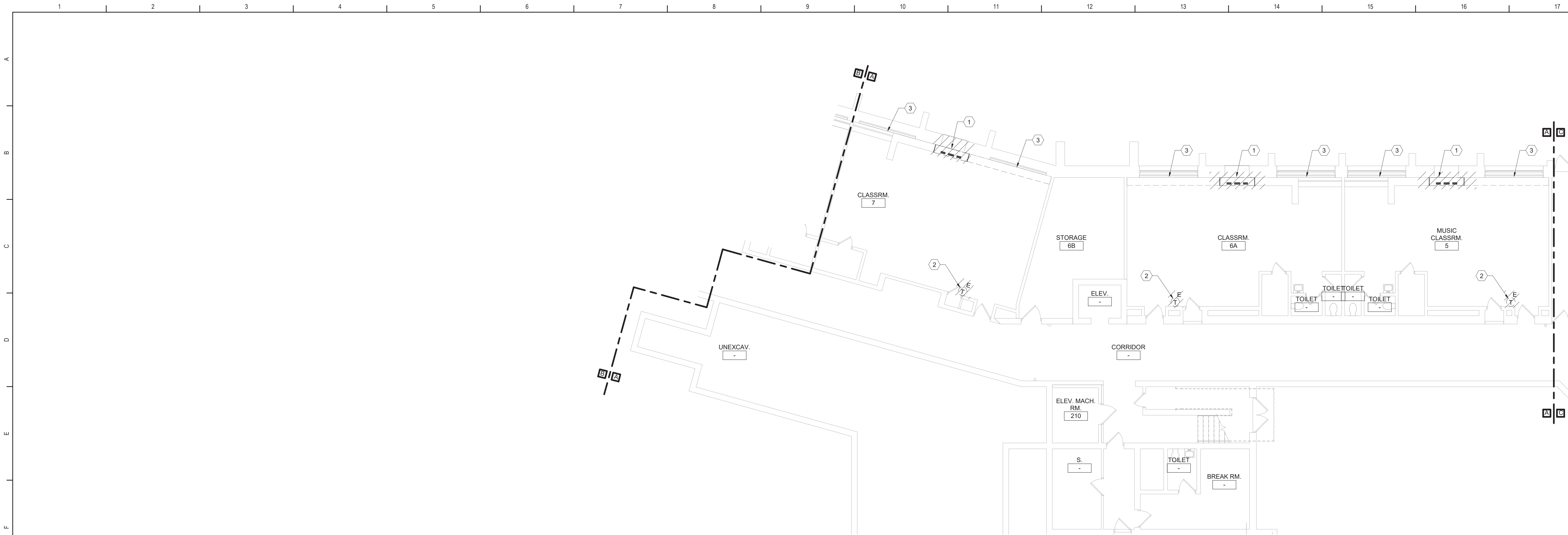
Reconstruction to:  
JV Forrestal Elementary School

Key Plans

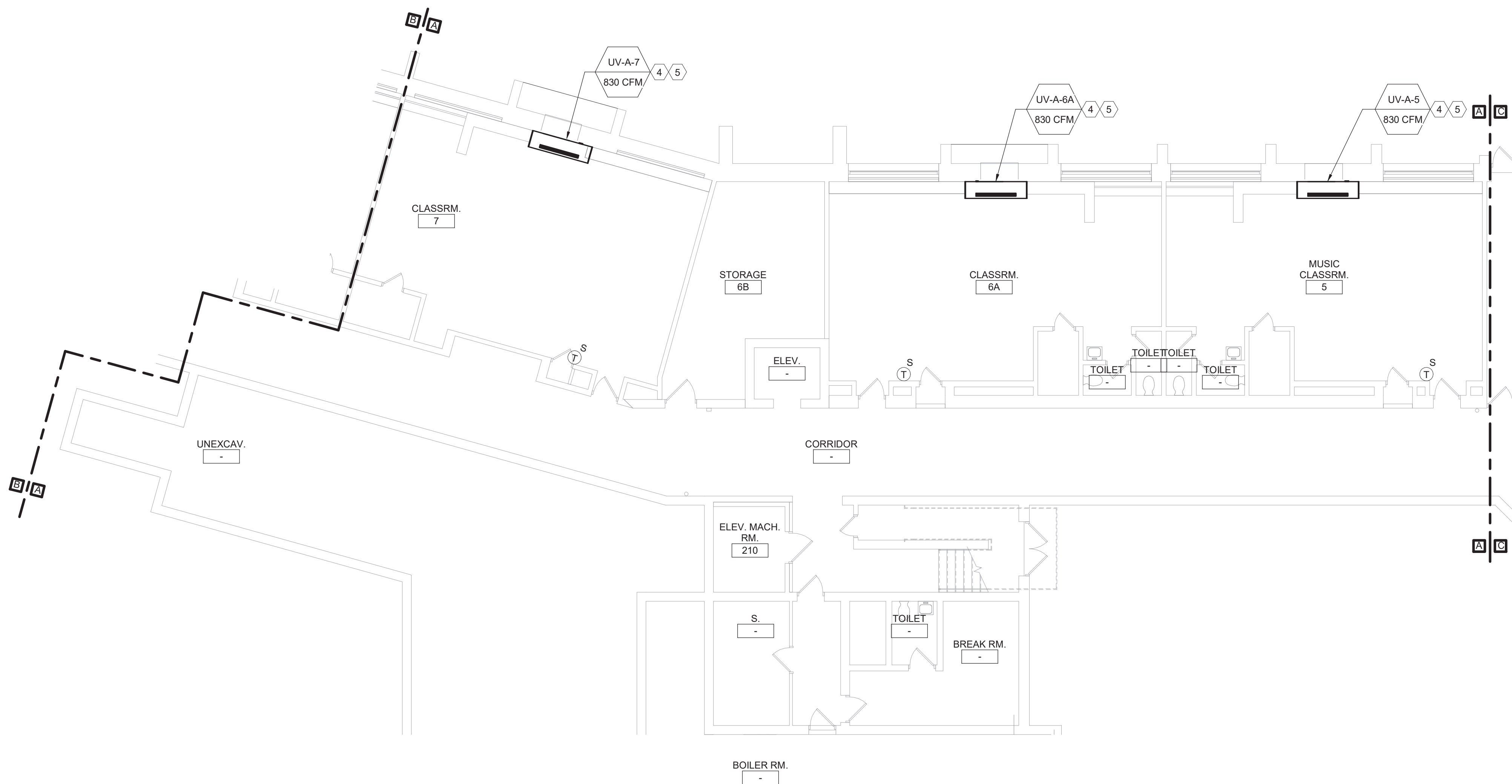
Drawn By: JPF/ljgm	Date: 10/28/2022	Drawing Number:
Project No.: 279180-22004	AM050	

BID SET





1 Ground Floor Demolition Plan - Area A  
1/8" = 1'-0"



2 Ground Floor Plan - Area A  
1/8" = 1'-0"

#### General Notes

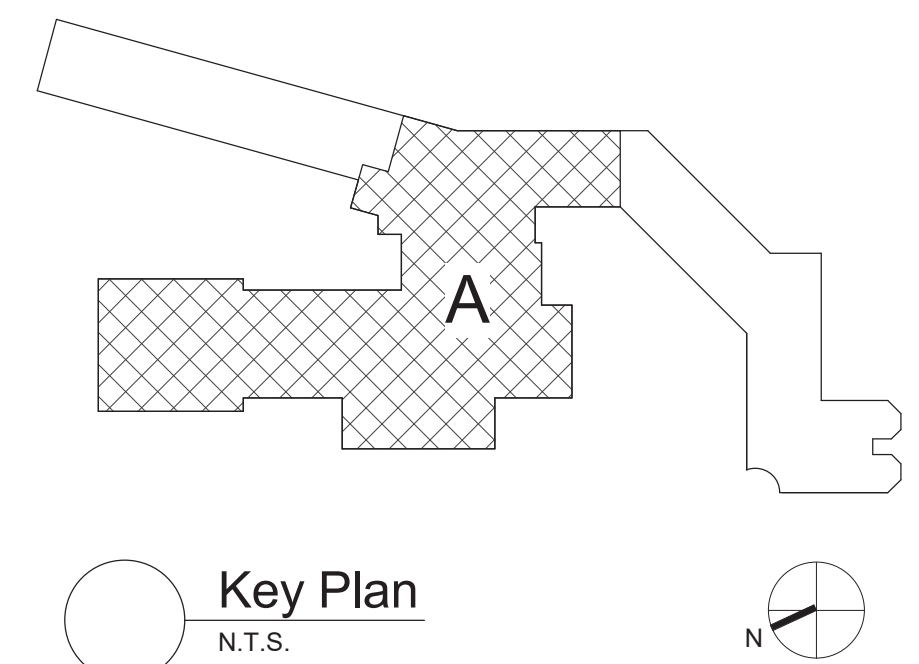
- A. REFER TO AM050 FOR GENERAL NOTES.

#### KEYED DEMOLITION NOTES:

- 1 REMOVE UNIT VENTILATOR, LOUVER, OUTDOOR AIR INTAKE SLEEVE AND ALL ASSOCIATED ACCESSORIES COMPLETE. REMOVE LPS/LPG PIPING AS REQUIRED FOR UV REMOVAL.  
2 REMOVE THERMOSTAT AND ASSOCIATED ACCESSORIES.  
3 FINNED TUBE RADIATION TO REMAIN.

#### KEYED NOTES:

- 4 EXTEND LPS/LPG PIPING AS REQUIRED TO MAKE CONNECTION AND PIPE PER DETAIL.  
5 PROVIDE OUTDOOR AIR LOUVER SIZED TO MATCH EXISTING OPENING. PROVIDE OA INTAKE SLEEVE AND SECURE TO LOUVER PER DETAIL. REFER TO ARCHITECTURAL DRAWINGS FOR LOUVER INSTALLATION.



S.E.D. Control No. 13-02-00-01-0-002-021

Rev. No.:	Date:	Description:



complex world | CLEAR SOLUTIONS

Tetra Tech Engineers, Architects & Landscape Architects, P.C.

**BID SET**

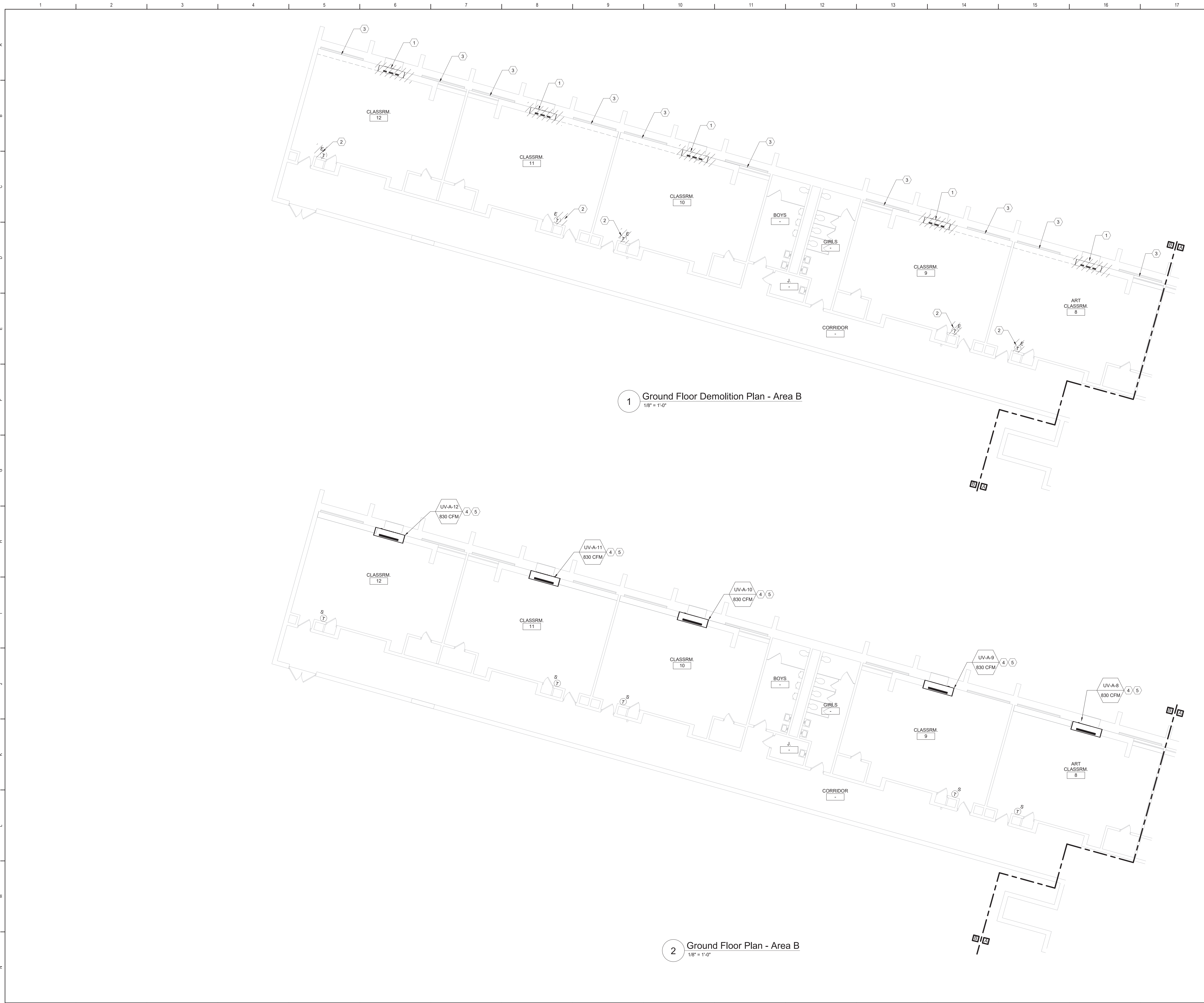


Beacon City School District  
Beacon, New York

Reconstruction to:  
JV Forrestal Elementary School

Ground Floor Plans - Area A

Drawn By: JPF/1/pgm	Date: 10/28/2022	Drawing Number:
Project No.: 279180-22004	AM100	



General Notes

A. REFER TO AM050 FOR GENERAL NOTES.

KEYED DEMOLITION NOTES:

1

REMOVE UNIT VENTILATOR, LOUVER, OUTDOOR AIR INTAKE SLEEVE AND ALL ASSOCIATED ACCESSORIES COMPLETE. REMOVE LPS/LPC PIPING AS REQUIRED FOR UV REMOVAL.

2

REMOVE THERMOSTAT AND ASSOCIATED ACCESSORIES.

3

FINNED TUBE RADIATION TO REMAIN.

KEYED NOTES:

4

EXTEND LPS/LPC PIPING AS REQUIRED TO MAKE CONNECTION AND PIPE PER DETAIL.

5

PROVIDE OUTDOOR AIR LOUVER SIZED TO MATCH EXISTING OPENING. PROVIDE OA INTAKE SLEEVE AND SECURE TO LOUVER PER DETAIL. REFER TO ARCHITECTURAL DRAWINGS FOR LOUVER INSTALLATION.

B

Key Plan

N.T.S.

N

S.E.D. Control No. 13-02-00-01-0-002-021

Rev. No.:	Date:	Description:

BEACON CITY SCHOOL DISTRICT

EXCELLENCE IS THE STANDARD

complex world

CLEAR SOLUTIONS

Tetra Tech Engineers, Architects & Landscape Architects, P.C.

BID SET

TT

TETRA TECH

ARCHITECTS & ENGINEERS

Beacon City School District

Beacon, New York

Reconstruction to:

JV Forrestal Elementary School

Ground Floor Plans - Area B

Drawn By:

JPF/1/pgm

Date:

10/28/2022

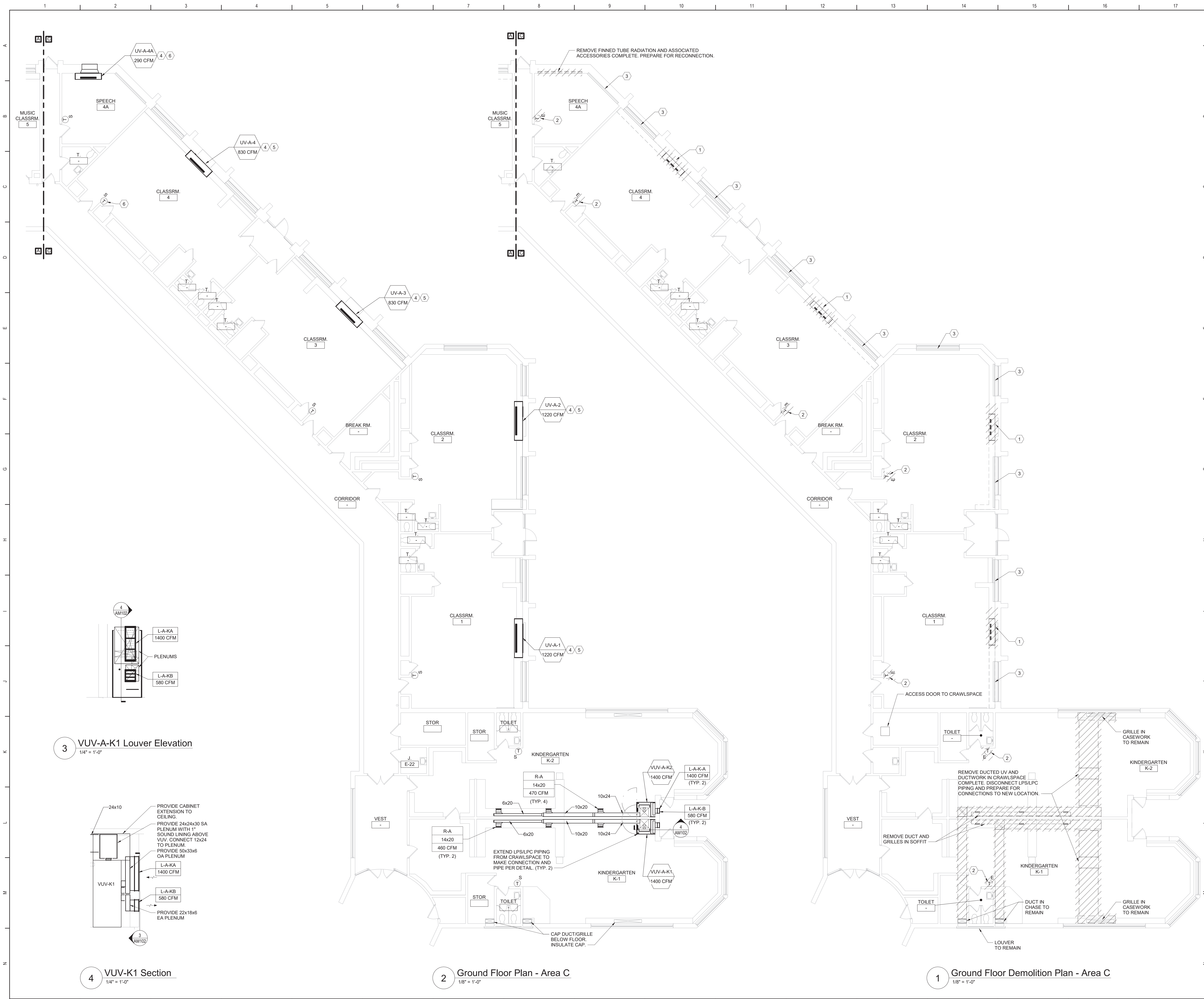
Drawing Number:

AM101

Project No.:

279180-22004





**General Notes**

A. REFER TO AM050 FOR GENERAL NOTES.

**KEYED DEMOLITION NOTES:**

1 REMOVE UNIT VENTILATOR, LOUVER, OUTDOOR AIR INTAKE SLEEVE AND ALL ASSOCIATED ACCESSORIES COMPLETE. REMOVE LPS/LPC PIPING AS REQUIRED FOR UV REMOVAL.

2 REMOVE THERMOSTAT AND ASSOCIATED ACCESSORIES.

3 FINNED TUBE RADIATION TO REMAIN.

**KEYED NOTES:**

4 EXTEND LPS/LPC PIPING AS REQUIRED TO MAKE CONNECTION AND PIPE PER DETAIL.

5 PROVIDE LOUVER SIZED TO MATCH EXISTING OPENING. PROVIDE OA INTAKE SLEEVE AND SECURE TO LOUVER PER DETAIL. REFER TO ARCHITECTURAL DRAWINGS FOR LOUVER INSTALLATION.

6 PROVIDE LOUVER AND OA INTAKE SLEEVE AND SECURE PER DETAIL. REFER TO ARCHITECTURAL DRAWINGS FOR WALL OPENING AND LOUVER INSTALLATION.

**Key Plan**  
N.T.S.

**S.E.D. Control No. 13-02-00-01-0-002-021**

Rev. No.	Date	Description

**Beacon City School District**  
COMPLEXITY IN THE WORLD

**complex world | CLEAR SOLUTIONS**

Tetra Tech Engineers, Architects & Landscape Architects, P.C.

**BID SET**

**TETRA TECH**  
ARCHITECTS & ENGINEERS

Beacon City School District  
Beacon, New York

Reconstruction to:  
JV Forrestal Elementary School

Ground Floor Plans - Area C

Drawn By: JPF/1/pgm	Date: 10/28/2022	Drawing Number:
Project No.: 279180-22004		<b>AM102</b>



General Notes

A. REFER TO AM050 FOR GENERAL NOTES.

KEYED DEMOLITION NOTES:

1

REMOVE UNIT VENTILATOR, LOUVER, OUTDOOR AIR INTAKE SLEEVE AND ALL ASSOCIATED ACCESSORIES COMPLETE. REMOVE LPS/LPG PIPING AS REQUIRED FOR UV REMOVAL.

2

REMOVE THERMOSTAT AND ASSOCIATED ACCESSORIES.

3

REMOVE FINNED TUBE RADIATION OR CONVECTOR AND ASSOCIATED ACCESSORIES COMPLETE. PREPARE FOR RECONNECTION.

4

FINNED TUBE RADIATION OR CONVECTOR TO REMAIN.

Key Plan

N.T.S.

S.E.D. Control No. 13-02-00-01-0-002-021

Rev. No.:

Date:

Description:

Beacon City School District

Beacon, New York

Reconstruction to:

JV Forrestal Elementary School

First Floor Demolition Plan - Area A

Drawn By:

JPF1/pgm

Date:

10/28/2022

Project No.:

279180-22004

Drawing Number:

AM103

complex world

CLEAR SOLUTIONS

Tetra Tech Engineers, Architects & Landscape Architects, P.C.

TETRA TECH

ARCHITECTS & ENGINEERS

Beacon City School District

Beacon, New York

Reconstruction to:

JV Forrestal Elementary School

First Floor Demolition Plan - Area A

Drawn By:

JPF1/pgm

Date:

10/28/2022

Project No.:

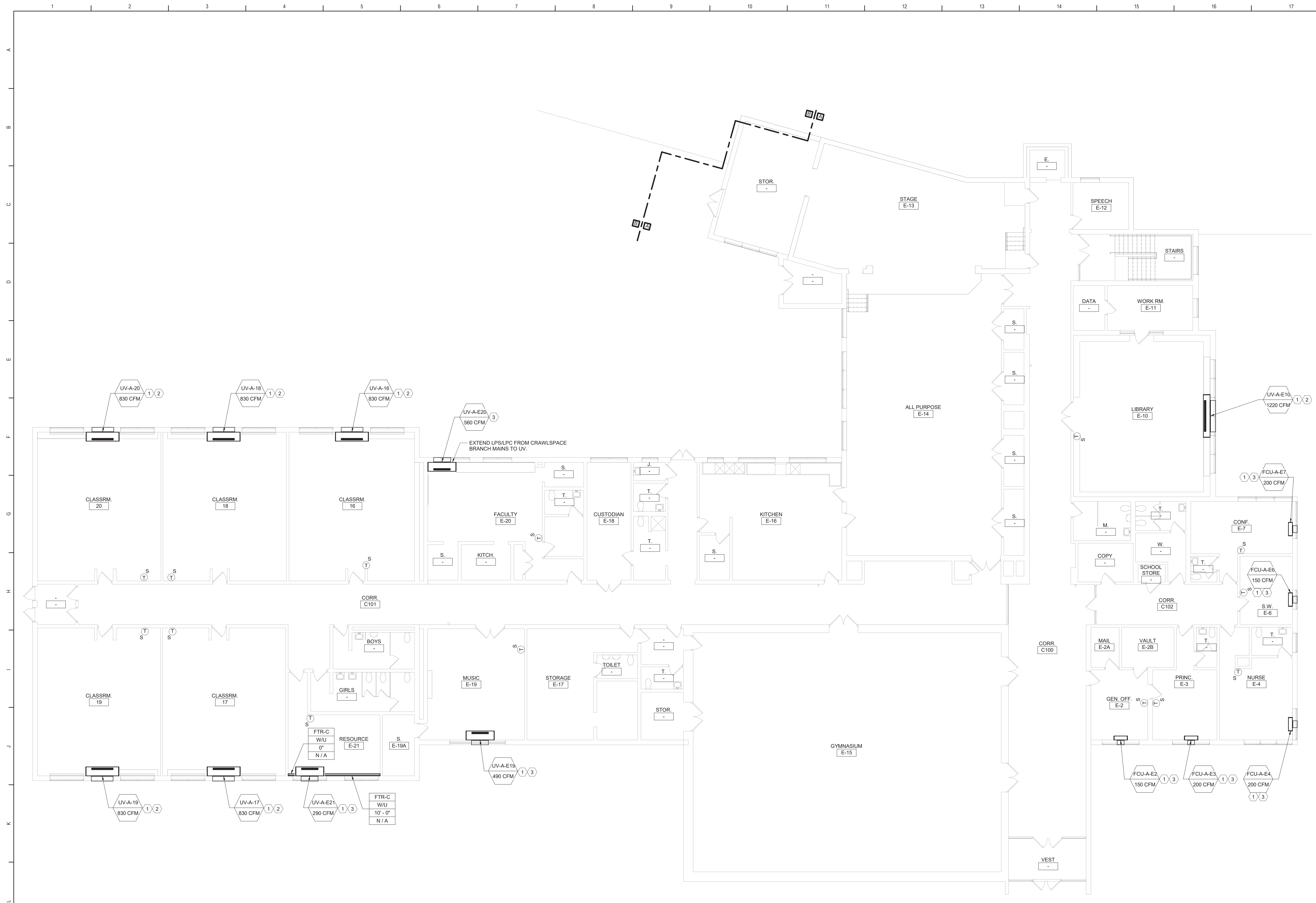
279180-22004

Drawing Number:

AM103

BID SET





A  
B  
C  
D  
E  
F  
G  
H  
I  
J  
K  
L  
M  
N

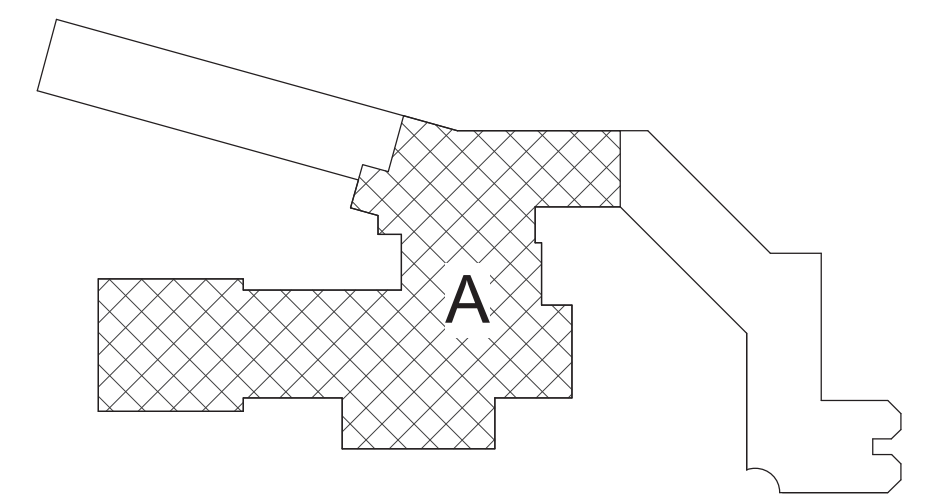
1 First Floor Plan - Area A  
1/8" = 1'-0"

General Notes

A. REFER TO AM050 FOR GENERAL NOTES.

KEYED NOTES:

- 1 EXTEND LPS/LPC PIPING AS REQUIRED TO MAKE CONNECTION AND PIPE PER DETAIL.
- 2 PROVIDE LOUVER SIZED TO MATCH EXISTING OPENING. PROVIDE OA INTAKE SLEEVE AND SECURE TO LOUVER PER DETAIL. REFER TO ARCHITECTURAL DRAWINGS FOR LOUVER INSTALLATION.
- 3 PROVIDE LOUVER AND OA INTAKE SLEEVE AND SECURE PER DETAIL. REFER TO ARCHITECTURAL DRAWINGS FOR WALL OPENING AND LOUVER INSTALLATION.



Key Plan  
N.T.S.

S.E.D. Control No. 13-02-00-01-0-002-021

Rev. No.	Date	Description



complex world  
CLEAR SOLUTIONS

Tetra Tech Engineers, Architects  
& Landscape Architects, P.C.



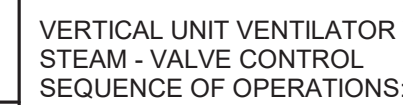
Beacon City School District  
Beacon, New York

Reconstruction to:  
JV Forrestal Elementary School

First Floor Plan - Area A

Drawn By: JPF1/pgm	Date: 10/28/2022	Drawing Number:
Project No.: 279180-22004	AM104	





- |   |   |
|---|---|
| 7 | VUV w/Energy Recovery - Steam - Valve Control |
|---|---|



- ## 5 UV - Steam Control



- FCU - Steam Control
- 
- NTS



- S.E.D. Control No. 13-02-00-01-0-002-021

Rev. No.:	Date:	Description:
-----------	-------	--------------



complex world | CLEAR SOLUTIONS

Tetra Tech Engineers, Architects  
& Landscape Architects, P.C.



Beacon City School District  
Beacon, New York

Reconstruction to:  
JV Forrestal Elementary School

## Details and Controls

Drawn By: JPF1/pgm	Date: 10/28/2022	Drawing Number:
Project No.: 279180-22004		AM500



UNIT VENTILATOR (UV) SCHEDULE																	
DWG LABEL	LOCATION	MODEL NO.	SA CFM	MIN. OA	HEATING DATA				ESP (IN. WG.)	RPM	ELECTRICAL					NOTES	
					NO. ROW	EAT (°F)	LAT (°F)	CAP. (MBH)			MOTOR QTY	MOTOR SIZE (HP)	V/PH	FLA	MCA		MOP
UV-A-1	CLASSROOM 1	VUVE150	1220	430	1	44.0	110.0	111.1	0.00	1120	2	0.25	120V/1ø	7.0	9.0	15	1-7
UV-A-2	CLASSROOM 2	VUVE150	1220	490	1	44.0	110.0	111.1	0.00	1120	2	0.25	120V/1ø	7.0	9.0	15	1-7
UV-A-3	CLASSROOM 3	VUVE100	830	410	1	38.5	110.0	75.4	0.00	1110	1	0.25	120V/1ø	3.5	4.5	15	1-7
UV-A-4	CLASSROOM 4	VUVE100	830	410	1	38.5	110.0	75.4	0.00	1110	1	0.25	120V/1ø	3.5	4.5	15	1-7
UV-A-4A	SPEECH 4A	VUVE075	290	130	1	40.8	110.0	55.2	0.00	670	1	0.25	120V/1ø	3.5	4.5	15	1-7
UV-A-5	MUSIC CLASSROOM 5	VUVE100	830	340	1	38.5	110.0	75.4	0.00	1110	1	0.25	120V/1ø	3.5	4.5	15	1-7
UV-A-6A	CLASSROOM 6 A	VUVE100	830	370	1	38.5	110.0	75.4	0.00	1110	1	0.25	120V/1ø	3.5	4.5	15	1-7
UV-A-7	CLASSROOM 7	VUVE100	830	400	1	38.5	110.0	75.4	0.00	1110	1	0.25	120V/1ø	3.5	4.5	15	1-7
UV-A-8	ART CLASSROOM 8	VUVE100	830	390	1	38.5	110.0	75.4	0.00	1110	1	0.25	120V/1ø	3.5	4.5	15	1-7
UV-A-9	CLASSROOM 9	VUVE100	830	390	1	38.5	110.0	75.4	0.00	1110	1	0.25	120V/1ø	3.5	4.5	15	1-7
UV-A-10	CLASSROOM 10	VUVE100	830	390	1	38.5	110.0	75.4	0.00	1110	1	0.25	120V/1ø	3.5	4.5	15	1-7
UV-A-11	CLASSROOM 11	VUVE100	830	390	1	38.5	110.0	75.4	0.00	1110	1	0.25	120V/1ø	3.5	4.5	15	1-7
UV-A-12	CLASSROOM 12	VUVE100	830	390	1	38.5	110.0	75.4	0.00	1110	1	0.25	120V/1ø	3.5	4.5	15	1-7
UV-A-16	CLASSROOM 16	VUVE100	830	380	1	38.5	110.0	75.4	0.00	1105	1	0.25	120V/1ø	3.5	4.5	15	1-7
UV-A-17	CLASSROOM 17	VUVE100	830	380	1	38.5	110.0	75.4	0.00	1105	1	0.25	120V/1ø	3.5	4.5	15	1-7
UV-A-18	CLASSROOM 18	VUVE100	830	380	1	38.5	110.0	75.4	0.00	1105	1	0.25	120V/1ø	3.5	4.5	15	1-7
UV-A-19	CLASSROOM 19	VUVE100	830	380	1	38.5	110.0	75.4	0.00	1105	1	0.25	120V/1ø	3.5	4.5	15	1-7
UV-A-20	CLASSROOM 20	VUVE100	830	380	1	38.5	110.0	75.4	0.00	1105	1	0.25	120V/1ø	3.5	4.5	15	1-7
UV-A-E10	LIBRARY E-10	VUVE150	1220	490	1	44.0	110.0	111.1	0.00	1120	2	0.25	120V/1ø	7.0	9.0	15	1-7
UV-A-E19	MUSIC E-19	VUVE075	490	220	1	40.4	110.0	55.1	0.00	730	1	0.25	120V/1ø	3.5	4.5	15	1-7
UV-A-E20	FACULTY E-20	VUVE075	560	260	1	40.6	110.0	55.1	0.00	1110	1	0.25	120V/1ø	3.5	4.5	15	1-7
UV-A-E21	RESOURCE E-21	VUVE075	290	130	1	40.8	110.0	55.2	0.00	670	1	0.25	120V/1ø	3.5	4.5	15	1-7
NOTES:																	
1. DESIGN BASIS: TRANE			3. STEAM COIL CONDITIONS: STEAM TEMP=222°F, PRESSURE=3 PSIG				6. UNIT 21-1/4" DEEP W/CLOSED PIPE TUNNEL.										
2. FLOOR MOUNTED UNIT			5. VERIFY PIPE AND ELECTRICAL LEFT/RIGHT HAND CONNECTIONS PRIOR TO ORDERING.				7. NEMA 1 DISCONNECT SWITCH.										
3. PROVIDE 1" MERV13 FILTER.			5. PROVIDE LOUVER AND WALL SLEEVE TO MATCH EXISTING OR NEW WALL OPENING.														

FAN COIL UNIT (FCU) SCHEDULE																
EQUIP NO.	LOCATION	MODEL NO.	SA CFM	MIN. OA	HEATING DATA				SUPPLY FAN		ELECTRICAL					NOTES
					NO. ROW	EAT (°F)	LAT (°F)	CAP. (MBH)	ESP (IN. WG.)	RPM	MOTOR SIZE (HP)	V/PH	FLA	MCA	MOP	
FCU-A-E2	GEN. OFF. E-2	FCDB020	150	20	1	60.1	110.0	13.2	0.00	700	0.02	120V/1ø	2.2	2.8	15	1-7
FCU-A-E3	PRINC. E-3	FCDB020	200	30	1	59.2	110.0	15.5	0.00	870	0.02	120V/1ø	2.2	2.8	15	1-7
FCU-A-E4	NURSE E-4	FCDB020	200	30	1	59.2	110.0	15.5	0.00	870	0.02	120V/1ø	2.2	2.8	15	1-7
FCU-A-E6	S.W. E-6	FCDB020	150	20	1	60.1	110.0	13.2	0.00	700	0.02	120V/1ø	2.2	2.8	15	1-7
FCU-A-E7	CONF. E-7	FCDB020	200	30	1	59.2	110.0	15.5	0.00	870	0.02	120V/1ø	2.2	2.8	15	1-7
NOTES:																
1. DESIGN BASIS: TRANE		4. STEAM COIL CONDITIONS: STEAM TEMP=222°F, PRESSURE=3 PSIG														
2. VERTICAL CABINET UNIT		5. VERIFY PIPE AND ELECTRICAL LEFT/RIGHT HAND CONNECTIONS PRIOR TO ORDERING.														
3. PROVIDE 1" MERV13 FILTER.		6. PROVIDE RETURN AIR BOTTOM INLET TOP GRILLE OUTLET AND OUTSIDE AIR WALL BOX.														
												7. PROVIDE NEMA 1 DISCONNECT SWITCH.				


VERTICAL UNIT VENTILATOR (VUV) SCHEDULE															
EQUIP NO.	LOCATION	MODEL NO.	SA (CFM)	MIN. OA AND EA (CFM)	HEATING DATA				STEAM COIL INLET (PSI)	SUPPLY ESP (IN. WG.)	ELECTRICAL				
					NO. ROW	EAT (°F)	LAT (°F)	TC (MBH)			SUPPLY FAN (HP)	RELIEF FAN (HP)	WHEEL (W)	V/PH	MCA
VUV-A-K1	KINDERGARTEN K-1	VER 1800D	1400	630	1	61.6	133.0	108.9	3.0	0.20	0.5	0.33	76	120 V/1ø	22.0
VUV-A-K2	KINDERGARTEN K-2	VER 1800D	1400	630	1	61.6	133.0	108.9	3.0	0.20	0.5	0.33	76	120 V/1ø	22.0
NOTES: 1. DESIGN BASIS: TEMPSPEC 2. VERTICAL CABINET UNIT 3. PROVIDE 2" MERV13 FILTER. 4. STEAM COIL CONDITIONS: STEAM TEMP=222°F, PRESSURE=3 PSIG 5. PROVIDE NEMA1 1 DISCONNECT SWITCH. 6. PROVIDE RELIEF FAN CAPABLE OF 580 CFM. 7. PROVIDE ENERGY RECOVERY WHEEL (70% MIN. EFFICIENCY) 8. WINTER (73%); OA EDB: 8.4; EWB: 6.6. RETURN AIR EDB: 65; EWB: 45 PROVIDE 12" BACK CABINET EXTENSION AND 24" SHEET METAL VERTICAL EXTENSION.															

LOUVER (L) SCHEDULE											
DWG LABEL	SERVES	MODEL NO.	TYPE	LENGTH (IN)	HEIGHT (IN)	DEPTH (IN)	FREE AREA (S.F.)	AIRFLOW (CFM)	VELOCITY (FPM)	MAX APD (IN WG)	NOTES
L-A-KA	VUV-A-K1 AND VUV-A-K2	ESD-635HP	INTAKE	13	46	6	2.20	1400	640	0.07	1-5
L-A-KB	VUV-A-K1 AND VUV-A-K2	ESD-635HP	EXHAUST	13	15	6	0.50	580	1160	0.2	1-5
NOTES: 1. DESIGN BASIS: GREENHECK 2. PROVIDE WITH KYNAR FINISH. 3. COLOR TO BE SELECTED BY ARCHITECT. 4. PROVIDE WITH EXTENDED SILL. 5. PROVIDE WITH ALUMINUM BIRDSCREEN IN REMOVABLE FRAME.											

JV FORRESTAL BUILDING/EQUIPMENT VENTILATION CALCULATIONS														
EQUIPMENT NUMBER	ZONE ID				MINIMUM VENTILATION RATES									
	ROOM NUMBER	ROOM NAME	OCCUPANCY CLASSIFICATION	Az - AREA (SF)	Pz - ZONE OCCU. #/1000 FT	ZONE OCCU.	Rp (CFM/ Person)	RpP	Ra (CFM/SF)	RaA	Vbz (CFM)	EZ	Voz (CFM)	
VUV-A-K1	K-1	KINDERGARTEN	Classrooms (ages 5-8)	1350	25	34	10	340	0.12	162	502	0.8	630	
VUV-A-K2	K-2	KINDERGARTEN	CLASSROOMS (AGES 5-8)	1313	25	33	10	330	0.12	158	488	0.8	610	
UV-A-1	1	CLASSRM.	CLASSROOMS (AGE 9 PLUS)	914	35	32	10	320	0.12	110	430	0.9	480	
UV-A-2	2	CLASSRM.	CLASSROOMS (AGE 9 PLUS)	1028	35	36	10	360	0.12	123	483	0.9	540	
UV-A-3	3	CLASSRM.	CLASSROOMS (AGE 9 PLUS)	857	35	30	10	300	0.12	103	403	0.9	450	
UV-A-4	4	CLASSRM.	CLASSROOMS (AGE 9 PLUS)	848	35	30	10	300	0.12	102	402	0.9	450	
UV-A-5	5	MUSIC CLASSRM.	CLASSROOMS (AGE 9 PLUS)	711	35	25	10	250	0.12	85	335	0.9	380	
UV-A-6A	6A	CLASSRM.	CLASSROOMS (AGE 9 PLUS)	756	35	27	10	270	0.12	91	361	0.9	410	
UV-A-7	7	CLASSRM.	CLASSROOMS (AGE 9 PLUS)	831	35	30	10	300	0.12	100	400	0.9	450	
UV-A-8	8	ART CLASSRM.	CLASSROOMS (AGE 9 PLUS)	819	35	29	10	290	0.12	98	388	0.9	440	
UV-A-9	9	CLASSRM.	CLASSROOMS (AGE 9 PLUS)	824	35	29	10	290	0.12	99	389	0.9	440	
UV-A-10	10	CLASSRM.	CLASSROOMS (AGE 9 PLUS)	822	35	29	10	290	0.12	99	389	0.9	440	
UV-A-11	11	CLASSRM.	CLASSROOMS (AGE 9 PLUS)	823	35	29	10	290	0.12	99	389	0.9	440	
UV-A-12	12	CLASSRM.	CLASSROOMS (AGE 9 PLUS)	816	35	29	10	290	0.12	98	388	0.9	440	
UV-A-16	16	CLASSRM.	CLASSROOMS (AGE 9 PLUS)	796	35	28	10	280	0.12	96	376	0.9	420	
UV-A-17	17	CLASSRM.	CLASSROOMS (AGE 9 PLUS)	774	35	28	10	280	0.12	93	373	0.9	420	
UV-A-18	18	CLASSRM.	CLASSROOMS (AGE 9 PLUS)	785	35	28	10	280	0.12	94	374	0.9	420	
UV-A-19	19	CLASSRM.	CLASSROOMS (AGE 9 PLUS)	792	35	28	10	280	0.12	95	375	0.9	420	
UV-A-20	20	CLASSRM.	CLASSROOMS (AGE 9 PLUS)	797	35	28	10	280	0.12	96	376	0.9	420	
UV-A-E10	E-10	LIBRARY	CLASSROOMS (AGE 9 PLUS)	945	35	34	10	340	0.12	113	453	0.9	510	
UV-A-4A	4A	SPEECH	CLASSROOMS (AGE 9 PLUS)	244	35	9	10	90	0.12	29	119	0.9	140	
FCU-A-E2	E-2	GEN. OFF.	OFFICE SPACE	171	5	1	5	5	0.06	10	15	0.9	20	
FCU-A-E3	E-3	PRINC.	OFFICE SPACE	225	5	2	5	10	0.06	14	24	0.9	30	
FCU-A-E4	E-4	NURSE	OFFICE SPACE	287	5	2	5	10	0.06	17	27	0.9	40	
FCU-A-E6	E-6	S.W.	OFFICE SPACE	154	5	1	5	5	0.06	9	14	0.9	20	
FCU-A-E7	E-7	PSYC.	OFFICE SPACE	249	5	2	5	10	0.06	15	25	0.9	30	
UV-A-E19	E-19	MUSIC	CLASSROOMS (AGE 9 PLUS)	467	35	17	10	170	0.12	56	226	0.9	260	
UV-A-E20	E-20	FACULTY	BREAKROOMS	687	50	35	5	175	0.12	82	257	0.9	290	
UV-A-E21	E-21	RESOURCE	CLASSROOMS (AGE 9 PLUS)	275	35	10	10	100	0.12	33	133	0.9	150	
NOTES: UV EZ = AIR DISTRIBUTION CONFIGURATION, Voz = ZONE OUTDOOR AIRFLOW														

S.E.D. Control No. 13-02-00-01-0-002-021

Rev. No.:      Date:      Description:



Beacon City School District  
Where Excellence is the Standard

complex world | CLEAR SOLUTIONS

Tetra Tech Engineers, Architects  
& Landscape Architects, P.C.

**BID SET**



**TETRA TECH**  
ARCHITECTS & ENGINEERS

Beacon City School District  
Beacon, New York

Reconstruction to:  
JV Forrestal Elementary School

Schedules

Drawn By:  
JPF1/pgm

Date:  
10/28/2022

Project No.:  
279180-22004

Drawing Number:  
**AM600**</