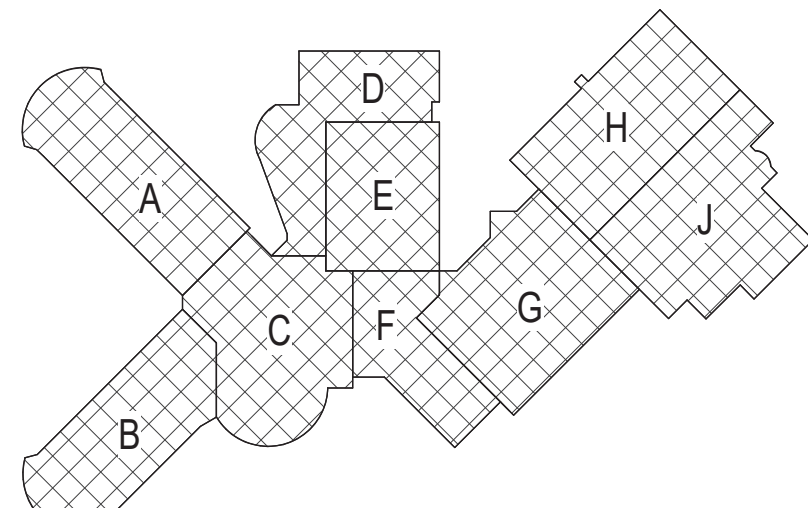


1 First Floor Key Plan
3/8" = 1'-0"

General Notes

- A. THE FOLLOWING GENERAL NOTES APPLY TO ALL "FM" SERIES DRAWINGS.
- B. REFER TO ALL CONTRACT DOCUMENTS, DRAWINGS AND SPECIFICATIONS FOR DETAILED STANDARDS AND REQUIREMENTS.
- C. REPORT UNSAFE OR UNSATISFACTORY CONDITIONS IN WRITING TO ARCHITECT AND RESOLVE ISSUES BEFORE PROCEEDING.
- D. WORK INCLUDES ALL LABOR AND MATERIALS REQUIRED TO PROVIDE COMPLETE WORKING SYSTEMS.
- E. COORDINATE PHASING REQUIREMENTS AT JOB MEETINGS AND ON WORK SCHEDULES.
- F. DO NOT SCALE DRAWINGS. PIPING AND DUCTWORK ARE SHOWN DIAGRAMMATICALLY. IT IS NOT POSSIBLE TO SHOW EVERY TRANSITION, FITTING, ASPECT RATIO CHANGE, ETC. PROVIDE AS REQUIRED TO FIT WITHIN STRUCTURAL CONSTRAINTS. EXAMINE CONDITIONS UNDER WHICH THE WORK IS TO BE PERFORMED AND VERIFY ALL ACCESS, LOCATIONS, DIMENSIONS, ARRANGEMENTS, ELECTRICAL CHARACTERISTICS AND INTERFERENCE IN THE FIELD PRIOR TO BID.
- G. VERIFY EXTENT OF CEILING WORK SHOWN ELSEWHERE IN THE CONTRACT DOCUMENTS. PROVIDE FOR ADDITIONAL CEILING SYSTEM REMOVAL, PROTECTION, AND REINSTALLATION AS REQUIRED FOR CONTRACT WORK.
- H. DEMOLITION DRAWINGS SHOW THE GENERAL SCOPE OF ITEMS AND SYSTEMS TO BE REMOVED. IT IS NOT THE INTENT TO SHOW ALL ITEMS TO BE REMOVED. FIELD VERIFY AND REMOVE ALL ASSOCIATED ITEMS BACK TO POINT OF CONTINUED SERVICE, UNLESS OTHERWISE NOTED. VERIFY WHAT ALL EQUIPMENT SERVES PRIOR TO REMOVAL.
- I. GIVE ALL REMOVED EQUIPMENT TO THE OWNER. DELIVER ON SITE WHERE DESIGNATED BY THE OWNER. PROMPTLY REMOVE FROM THE SITE AND LEGALLY DISPOSE OF ANY SUCH ITEMS DECLINED BY OWNER.
- J. IF UNANTICIPATED MECHANICAL, ELECTRICAL, OR STRUCTURAL CONFLICTS ARE ENCOUNTERED, INVESTIGATE AND REPORT BOTH NATURE AND EXTENT OF THE CONFLICT. RE-ROUTE WORK AS REQUIRED.
- K. CUT, DRILL, OR OTHERWISE CREATE OPENINGS AS NEATLY AS POSSIBLE, AS REQUIRED FOR THE INDICATED CONTRACT WORK. PROVIDE SUPPORT AS REQUIRED FOR AND USE METHODS LEAST LIKELY TO DAMAGE ELEMENTS TO REMAIN. PRIOR TO WORK, VERIFY LOCATIONS OF ALL STRUCTURAL MEMBERS INCLUDING CROSS BRACING, ELECTRICAL WIRING, PLUMBING, ETC. PROMPTLY NOTIFY ARCHITECT OF ANY CONFLICTS. DO NOT CUT ANY STRUCTURAL MEMBERS OR OTHER SERVICES UNTIL SPECIFICALLY DIRECTED TO DO SO. PENDING RECEIPT OF DIRECTIVE, REARRANGE SCHEDULE AS NECESSARY TO CONTINUE OVERALL JOB PROGRESS WITHOUT DELAY.
- L. PATCH ALL DISTURBANCES RESULTING FROM DEMOLITION OR NEW WORK TO MATCH SURROUNDING SURFACES. PATCH FOLLOWING DEMOLITION, AND AGAIN FOLLOWING WORK, WHERE HOLES REMAIN FROM REMOVALS, INFILL AND PATCH TO MATCH UNLESS HOLES ARE TO BE REUSED.
- M. PROTECT ALL CONTRACT EQUIPMENT, ELEMENTS TO REMAIN, OWNERS BELONGINGS, AND EQUIPMENT TO BE REUSED OR RETAINED BY OWNER DURING ALL CONTRACT WORK. AT NO ADDITIONAL COST TO OWNER, REPAIR OR REPLACE ITEMS WHICH ARE DAMAGED.
- N. THOROUGHLY CLEAN FOLLOWING DEMOLITION AND BEFORE BEGINNING CONTRACT INSTALLATIONS. THOROUGHLY CLEAN AGAIN DURING AND FOLLOWING CONTRACT WORK AS REQUIRED. LEAVE ALL WORK AREAS CLEANER THAN FOUND. LEGALLY DISPOSE OF ALL CONSTRUCTION DEBRIS.
- O. PROVIDE TEMPORARY PIPING, DUCT, HEAT, WEATHERPROOFING, ETC. TO SERVICES TO REMAIN UNTIL PERMANENT INSTALLATIONS CAN BE MADE.
- P. ALL EXCESS MATERIALS AND SCRAPS ARE CONTRACTOR'S PROPERTY. PROMPTLY REMOVE FROM SITE UNLESS SPECIFICALLY DIRECTED OTHERWISE.
- Q. SEAL ALL FLOOR, WALL AND CEILING PENETRATIONS PER FIRE-RESISTANCE RATINGS NOTED ON FG-SERIES DRAWINGS, BUT NOT LESS THAN 1-HOUR, AND IN ACCORDANCE WITH SECTION 07 84 13 - PENETRATION FIRESTOPPING. THIS INCLUDES ALL NEW PENETRATIONS AND EXISTING UNFIRESTOPPED PENETRATIONS CREATED BY REMOVALS, AS REQUIRED TO PERFORM THE WORK.



Key Plan
N.T.S.

S.E.D. Control No. 13-02-00-01-0-020-012

| Rev. No. | Date | Description |
|----------|------|-------------|
| | | |
| | | |
| | | |
| | | |



complex world
CLEAR SOLUTIONS

Tetra Tech Engineers, Architects
& Landscape Architects, P.C.



Beacon City School District
Beacon, New York

Reconstruction to:
Beacon High School

First Floor Key Plan

| | | |
|------------------------------|---------------------|---------------------------------|
| Drawn By: JPF1/vz | Date: 10/28/2022 | Drawing Number: FM051 |
| Project No.: 279180-22004 | | |

BID SET



A. REFER TO FM051 FOR GENERAL NOTES



S.E.D. Control No. 13-02-00-01-0-020-012

| | | |
|--|--|--|
| | | |
| | | |
| | | |
| | | |
| | | |
| | | |



Tetra Tech Engineers, Architects
& Landscape Architects, P.C.

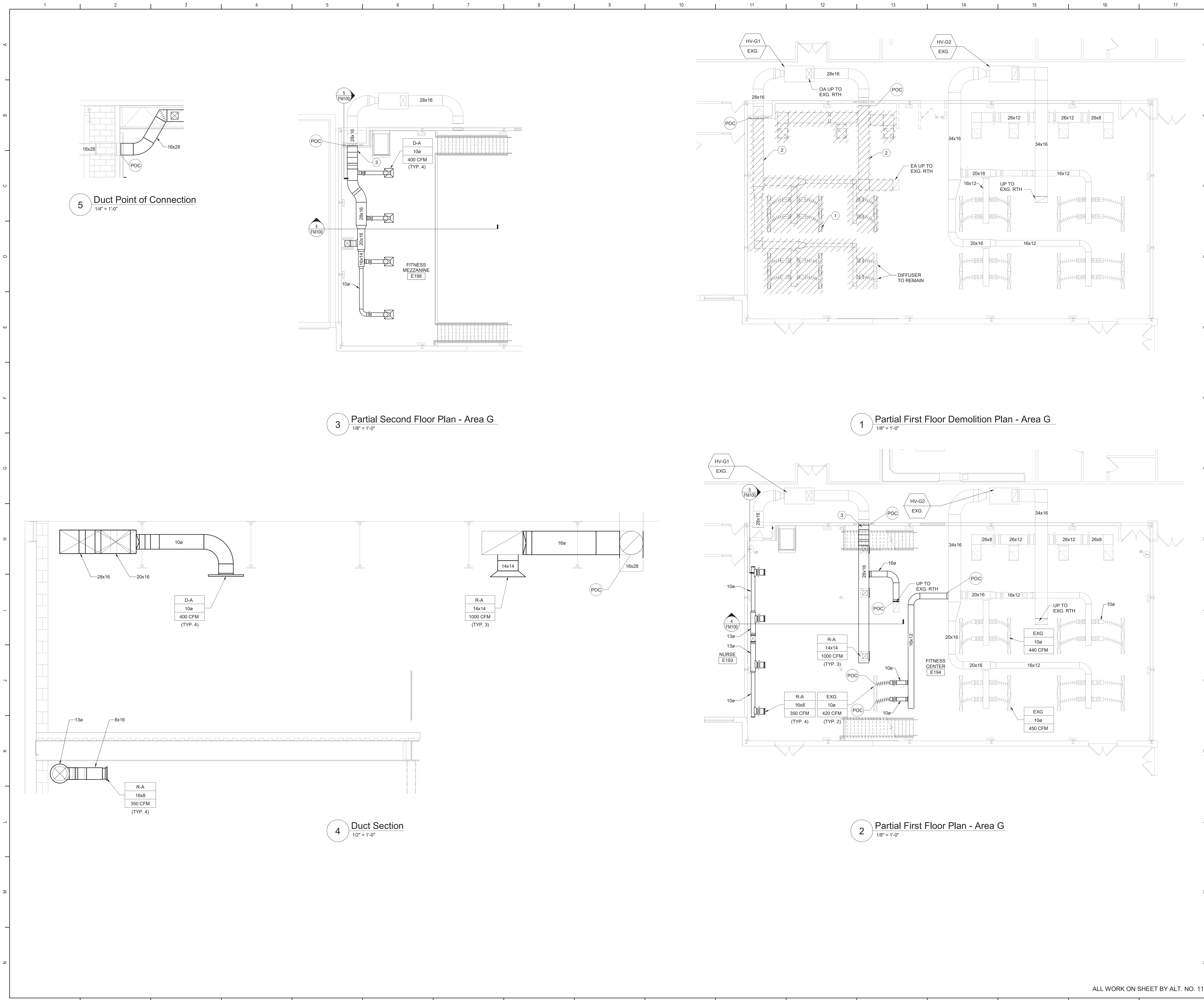


Beacon City School District
Beacon, New York

| | |
|---|--|
| M | Reconstruction to: Beacon High School |
|---|--|

Second Floor Key Plan

| | | | |
|---|------------------------------|---------------------|-----------------|
| N | Drawn By: JPF1/vz | Date: 10/28/2022 | Drawing Number: |
| | Project No.: 279180-22004 | | FM052 |



General Notes

A. REFER TO FM051 FOR GENERAL NOTES.

Keyed Notes

1

REMOVE GRILLES AND ALL ASSOCIATED ACCESSORIES. (TYPICAL).

2

REMOVE DUCTWORK, AND ASSOCIATED ACCESSORIES TO POC AS SHOWN. PREPARE FOR RECONNECTION.

3

PROVIDE 12x12 ACCESS DOOR FOR EXISTING FD.

Key Plan

N.T.S.

S.E.D. Control No. 13-02-00-01-0-020-012

| Rev. No.: | Date: | Description: |
|-----------|-------|--------------|
| | | |
| | | |
| | | |
| | | |

Beacon City School District
Building Excellence is the Foundation

complex world
CLEAR SOLUTIONS

Tetra Tech Engineers, Architects
& Landscape Architects, P.C.

TETRA TECH

ARCHITECTS & ENGINEERS

Beacon City School District
Beacon, New York

Reconstruction to:
Beacon High School

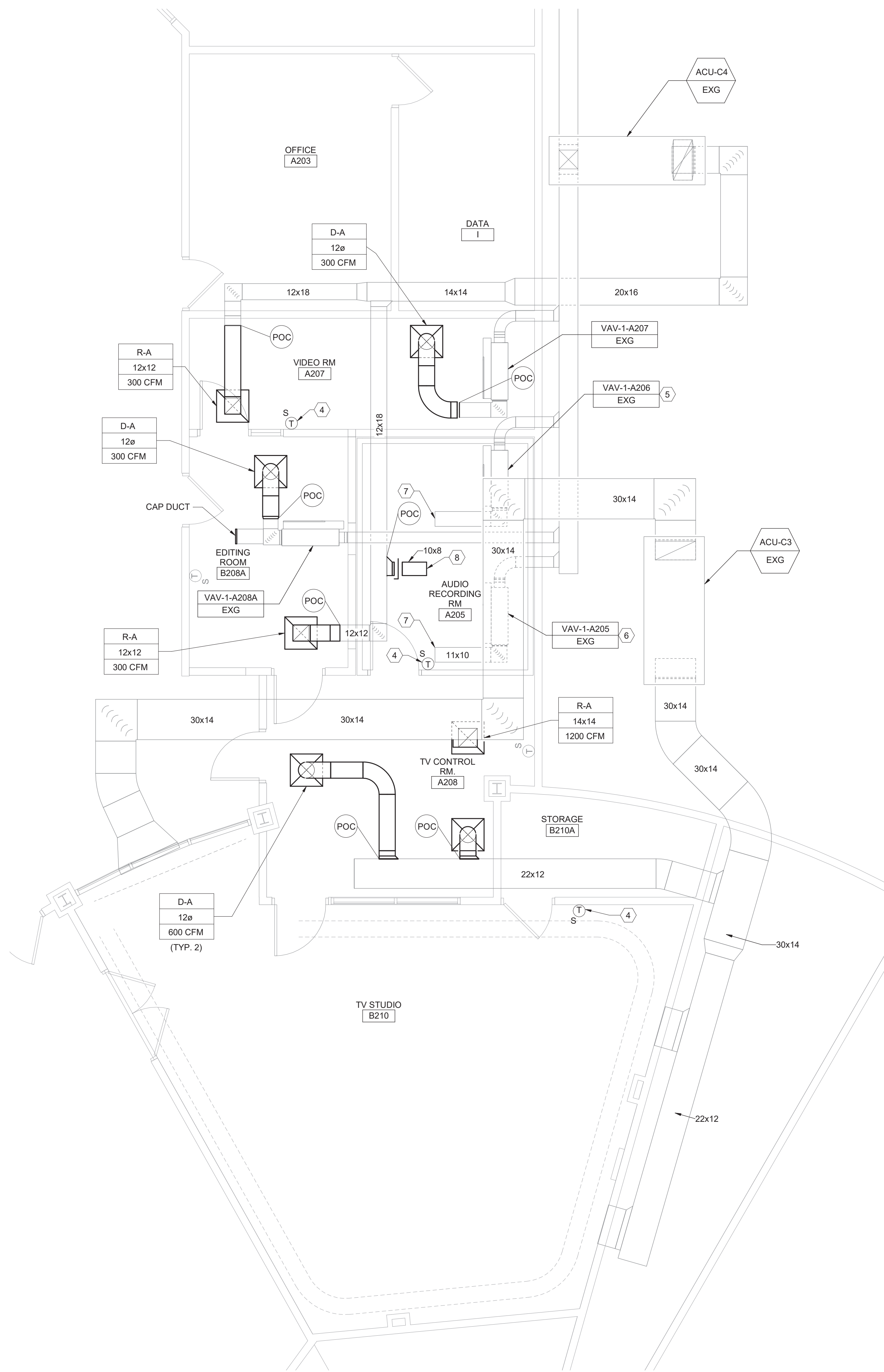
Partial Plans and Sections - Area G

Drawn By:
JPF1/vz

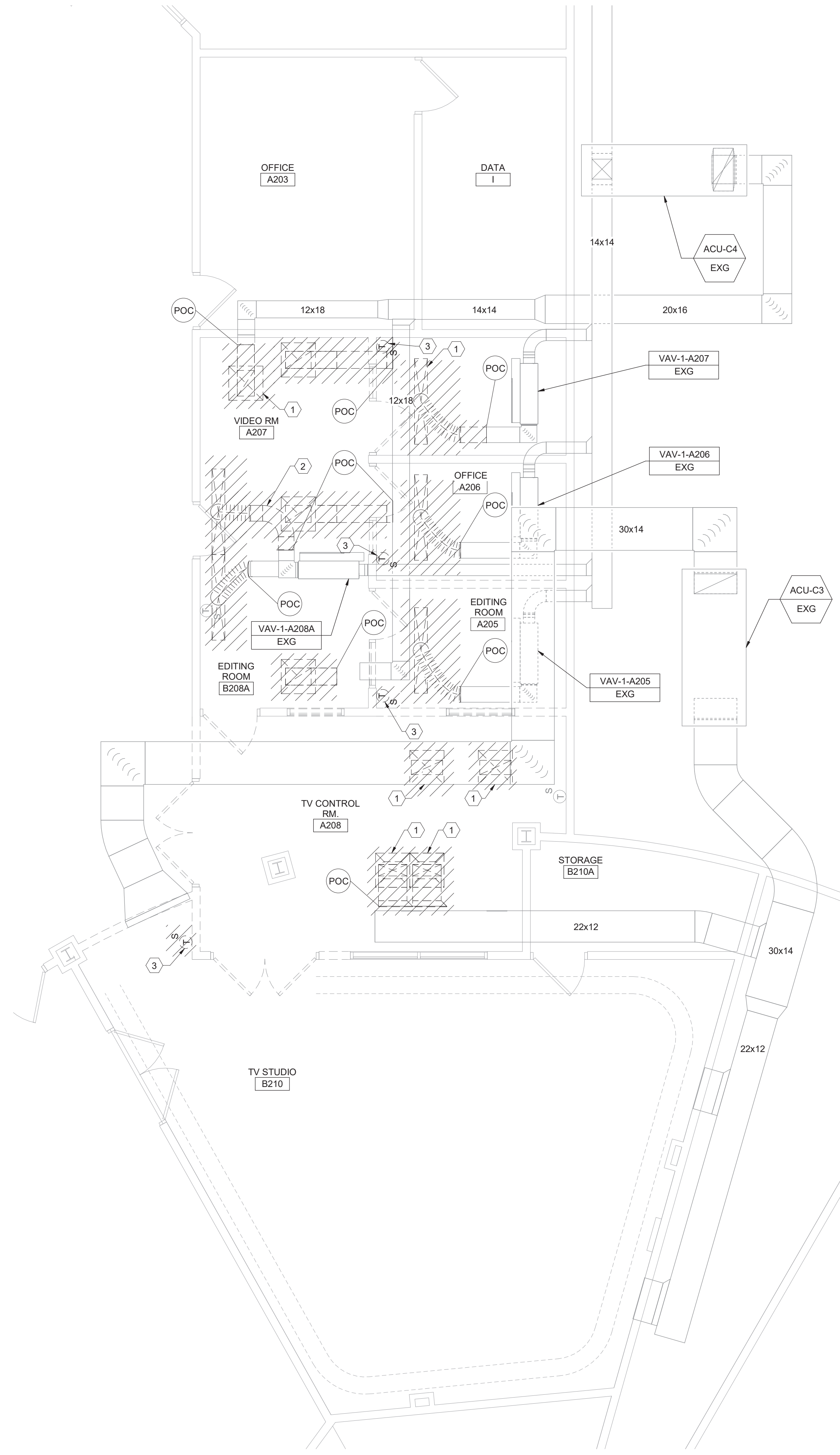
Date:
10/28/2022

Project No.:
279180-22004

Drawing Number:
FM100



2 Partial Second Floor Plan - Area C
1/4" = 1'-0"



1 Partial Second Floor Demolition Plan - Area C
1/4" = 1'-0"

General Notes

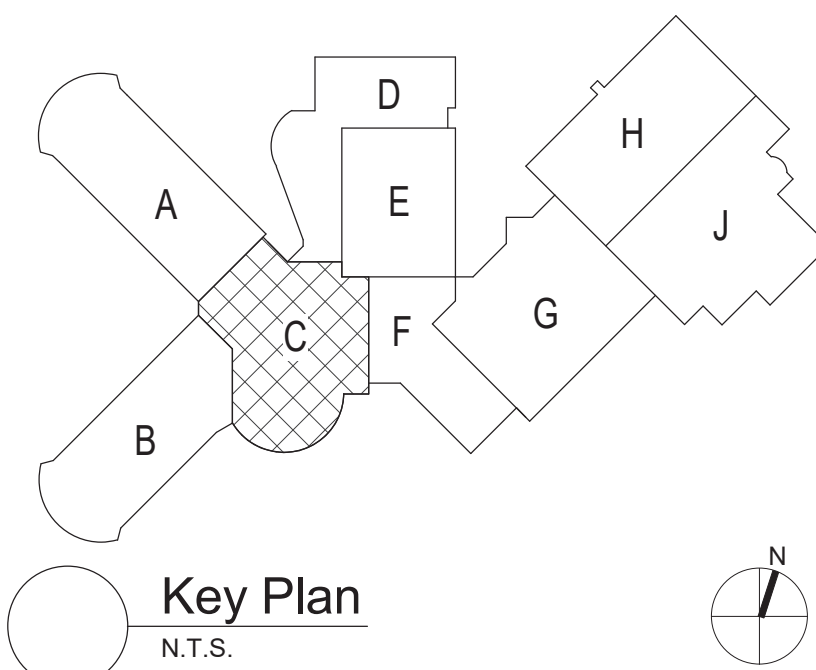
A. REFER TO FM051 FOR GENERAL NOTES.

KEYED DEMOLITION NOTES:

- 1 REMOVE GRILLES AND ALL ASSOCIATED ACCESSORIES. (TYPICAL)
- 2 REMOVE DUCTWORK, AND ALL ASSOCIATED ACCESSORIES TO POC AS SHOWN. PREPARE FOR RECONNECTION. (TYPICAL)
- 3 REMOVE TEMPERATURE THERMOSTAT AND STORE FOR REINSTALLATION IN NEW LOCATION.

KEYED NOTES:

- 4 RELOCATE AND REINSTALL WALL THERMOSTAT. EXTEND WIRING AS REQUIRED..
- 5 BALANCE VAV-1-A206 TO 190 CFM.
- 6 BALANCE VAV-1-A205 TO 185 CFM.
- 7 EXTEND 1 1/2" SA DUCTS TO WITHIN (AND WITH SA AIRFLOW POINTING TOWARDS) 2'-0" OF SOUND ISOLATION ROOM CEILING INTAKE. PROVIDE WWM SCREEN.
- 8 PROVIDE WWM SCREEN. BALANCE TO 375 CFM.



S.E.D. Control No. 13-02-00-01-0-020-012

Rev. No.: Date: Description:



complex world | CLEAR SOLUTIONS

Tetra Tech Engineers, Architects
& Landscape Architects, P.C.



TETRA TECH
ARCHITECTS & ENGINEERS

Beacon City School District
Beacon, New York

Reconstruction to:
Beacon High School

Partial Second Floor Plans - Area C

Drawn By:

JPF1/vz

Date:

10/28/2022

Project No.:

279180-22004

Drawing Number:

FM101

ALL WORK ON SHEET BY ALT. NO. 14



S.E.D. Control No. 13-02-00-01-0-020-012

BID SET



Beacon City School District
Beacon, New York

| | |
|---|--|
| M | Reconstruction to: Beacon High School |
|---|--|

| | | | |
|---|------------------------------|---------------------|-----------------|
| N | Drawn By: JPF1/vz | Date: 10/28/2022 | Drawing Number: |
| | Project No.: 279180-22004 | | FM50 |

FM500