

## REVISIONS

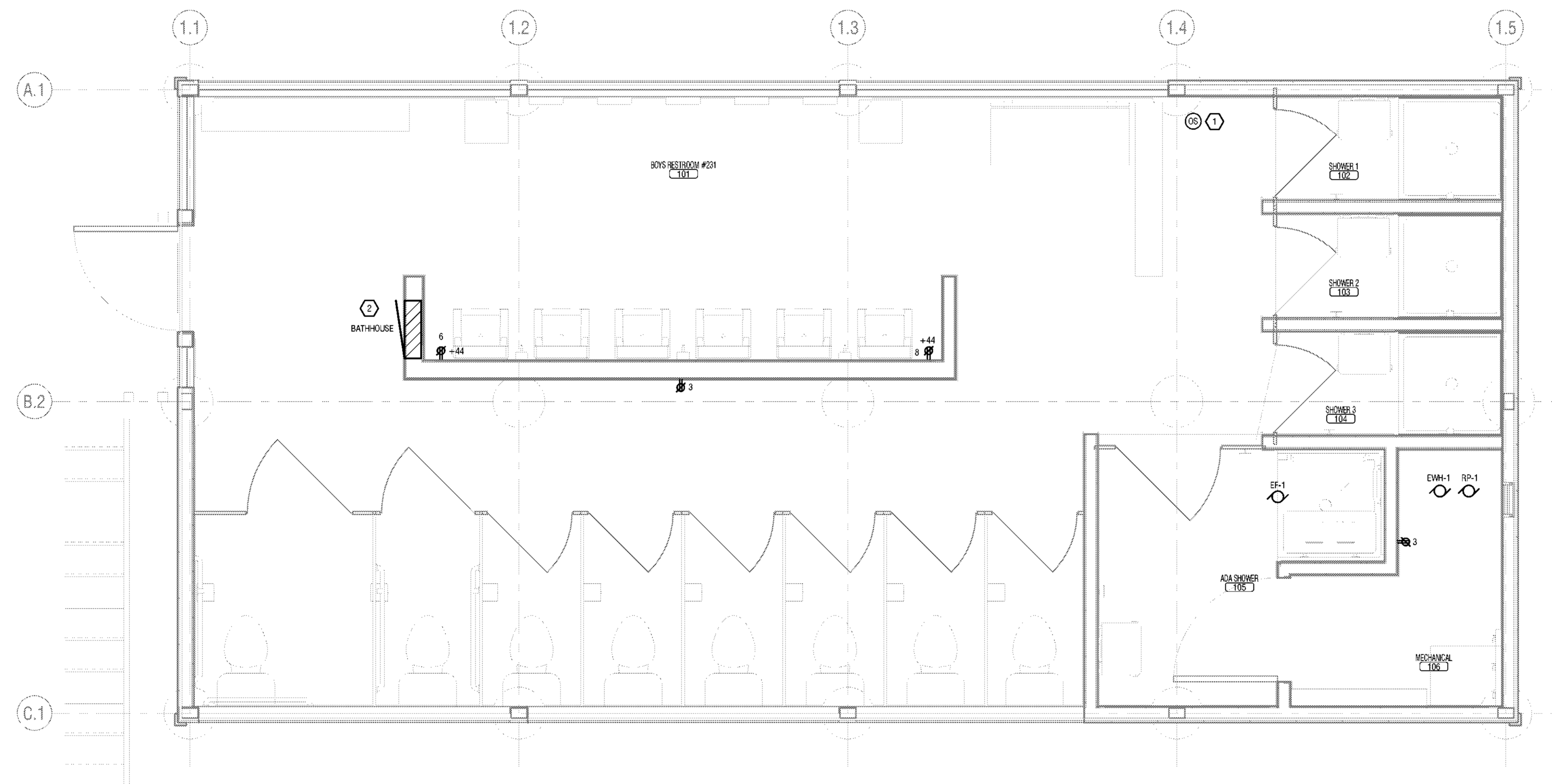
[illegible]

Drawn By: <b>JJS</b>	Seal and Signature
Design By: <b>JJS</b>	
Checked By: <b>NCH</b>	
Approved By: <b>NCH</b>	
Date: <b>3/16/23</b>	

<p><b>Sheet Title:</b></p> <p><b>BATHHOUSE #231 &amp; #322 POWER PLANS</b></p> <p><b>Bid Documents</b></p> <p>Project Number: <b><i>21059.23</i></b></p>	<p><b>Drawing Number:</b></p> <p><b>E101</b></p> <p><b>Sheet:</b></p>
--	---

A. CIRCUIT RECEPTACLES TO 20A/1/1P CIRCUIT BREAKER IN BATH-HOUSE PANEL USING 2#12, 1#12G IN 1/2", CIRCUIT NUMBER AS INDICATED.

- 1 PROVIDE OCCUPANCY SENSOR AND POWER PACK TO CONTROL EXHAUST FAN 1. COORDINATE LOCATION OF EXHAUST FAN WITH MECHANICAL CONTRACTOR.
- 2 MOUNT PANELBOARD AT 8'6" ABOVE FINISH FLOOR TO THE TOP OF TRIM.



1 BATHHOUSE #231 & #322 POWER PLAN  
E101 1/2" = 1'-0"