

2022 CAPITAL BOND PROJECT
PHASE 2GREENVALE ELEMENTARY
SCHOOL

ITE - CIVIL CONSULTANT
THE LA GROUP
79 GRAHAM ROAD
HACA, NY 14850

STRUCTURAL CONSULTANT
REILLY TARANTINO ENGINEERING
 1000 PARK BLVD., SUITE 209
 MASSAPEQUA PARK, NY 11762

EP CONSULTANT
TANTEC
100 OAK STREET, SUITE 400
TAMFORD, CT 06905

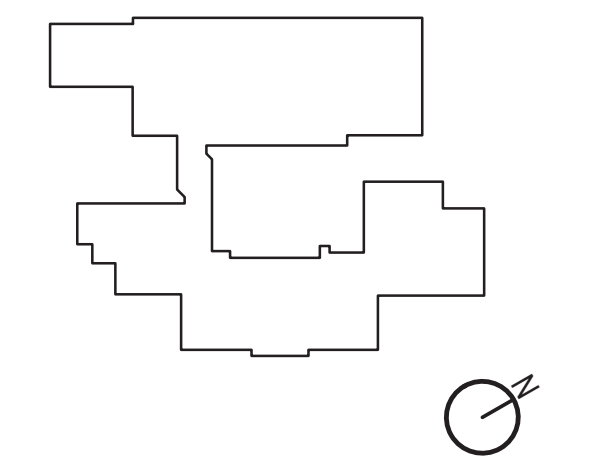
SECURITY CONSULTANT
BUILDING TECHNOLOGY CONSULTING
92 BEDFORD STREET
RIDGewater, MA 02324

HAZARDOUS MATERIALS CONSULTANT
WSP
ONE PENN PLAZA
50 W 34TH ST., 4TH FLOOR
NEW YORK, NY 10119

LIGHTING CONSULTANT
GOLDSTICK LIGHTING DESIGN
29 FIFTH AVE, #204
ELHAM, NY 10803
14.693.0221

[illegible]

KEY PLAN



ED PROJECT NO.	66-03-01-03-0-006-015
EMASI PROJECT NO.	102-2202

GR P103

© 2022 MEMASI. ALL RIGHTS RESERVED.

U:\223030829\00_MEP\02_CAD\PHASE_2_EUFSO_VESTIBULES\SHEETS\GR\223030829_GR_P103.DWG

2022 CAPITAL BOND PROJECT
PHASE 2GREENVALE ELEMENTARY
SCHOOL

MEMASI

THE LA GROUP
79 GRAHAM ROAD
HACA, NY 14850


REILLY TARANTINO ENGINEERING
1000 PARK BLVD., SUITE 209
MASSAPEQUA PARK, NY 11762

STANTEC
100 OAK STREET, SUITE 400
STAMFORD, CT 06905

BUILDING TECHNOLOGY CONSULTING
92 BEDFORD STREET
RIDGewater, MA 02324

WSP
ONE PENN PLAZA
50 W 34TH ST., 4TH FLOOR
NEW YORK, NY 10119

GOLDSTICK LIGHTING DESIGN
29 FIFTH AVE, #204
ELHAM, NY 10803
14.693.0221

[illegible]

ED PROJECT NO.	66-03-01-03-0-006-015
EMASI PROJECT NO.	102-2202

GR P201

© 2022 MEMASI. ALL RIGHTS RESERVED