

N SCHEDULE																		
STRAINER SPECIFICATION																		
CAST IRON	GALVANIZED	NICKEL BRONZE	STAINLESS STEEL	CHROME PLATED	POLISHED FINISH	SATIN FINISH	SECONDARY STRAINER	SEDIMENT BUCKET	LESS GRATE	HALF GRATE	FLUSH GRATE	TRACTOR GRATE	FLAT TOP	FUNNEL TOP			DOME	EXTENSION
●																●	●	FLAT ROOFS
●																	●	

NATURAL DRAWINGS.

ED IN COORDINATION WITH THE MECHANICAL CONTRACTOR.

WATER PROOFING SYSTEMS PRIOR TO SUBMITTING SHOP DRAWINGS.

WISE NOTED. PROVIDE DISTRIBUTION UNIT MI-DU WHEN APPLICABLE. PROVIDE ½" CW CONNECTION TO ALL TRAP PRIMERS.

DESIGNATION	MANUFACTURER	MODEL NUMBER	DRAIN BODY SPECIFICATION								STRAINER SPECIFICATION																APPLICABLE AREAS			
			BRONZE	CAST IRON	GALVANIZED	STAINLESS STEEL	CLAMPING DEVICE	SECONDARY CLAMP	SUMP RECEIVER	ACID RESISTANT COATING	TRAP PRIMER CONNECTION	BRONZE	CAST IRON	GALVANIZED	NICKEL BRONZE	STAINLESS STEEL	CHROME PLATED	POLISHED FINISH	SATIN FINISH	SECONDARY STRAINER	SEDIMENT BUCKET	LESS GRADE	HALF GRADE	FLUSH GRADE	TRACTOR GRADE	FLAT TOP		FUNNEL TOP	DOME	EXTENSION
RD	ZURN	Z164	●			●		●			●																●	●	●	FLAT ROOFS
FD	ZURN	Z525	●							●	●																		●	
NOTES: 1. ALL FLOOR DRAINS IN FINISHED AREAS AND ALL ROOF DRAINS SHALL BE LOCATED AS PER THE ARCHITECTURAL DRAWINGS. 2. ALL FLOOR DRAINS IN MECHANICAL EQUIPMENT ROOMS, BIOLER ROOMS, FAN ROOMS ETC, SHAL BE LOCATED IN COORDINATION WITH THE MECHANICAL CONTRACTOR. 3. THE CONTRACTOR SHALL VERIFY THE COMPATIBILITY OF THE DRAINS WITH THE APPROVED ROOFING AND/OR WATER PROOFING SYSTEMS PRIOR TO SUBMITTING SHOP DRAWINGS. 4. THE TOP OF ALL FLOOR DRAINS SHALL BE FLUSH WITH THE ADJACENT FINISHED FLOOR. 5. PROVIDE TRAP PRIMER MOD# M-500 AS MANUFACTURED BY MIFAB ON ALL FLOOR DRAINS UNLESS OTHERWISE NOTED. PROVIDE DISTRIBUTION UNIT MI-DU WHEN APPLICABLE. PROVIDE ½" CW CONNECTION TO ALL TRAP PRIMERS.																														

OPENING / SLEEVE SCHEDULE		
INSULATED DOMESTIC COLD WATER, HOT WATER, AND HOT WATER RECIRCULATION PIPING		
PIPE DIAMETER	WALL / FLOOR SLEEVE DIAMETER	BEAM OPENING DIAMETER
1" & 1 1/2"	3"	4"
1"	4"	4 1/2"
1 1/2"	4"	5"
1 1/2"	4"	5"
2" & 3"	5"	6"
3"	6"	6 1/2"
4"	8"	7 1/2"
5"	8"	8"
6"	10"	9"
UNINSULATED SANITARY, WASTE, VENT, STORM, AND GAS PIPING		
PIPE DIAMETER	WALL / FLOOR SLEEVE DIAMETER	BEAM OPENING DIAMETER
1"	3"	3"
2"	4"	3 1/2"
2 1/2"	4"	4"
3"	5"	4 1/2"
4"	6"	5"
5"	8"	6"
6"	8"	7 1/2"
8"	10"	9"
10"	12"	11"
12"	15"	13"
15"	18"	16"

MATERIAL SCHEDULE		
	FITTING SPECIFICATION	JOINT SPECIFICATION
	SERVICE WEIGHT HUBLESS CAST IRON	NEOPRENE RUBBER SEALING SLEEVE AND HEAVY DUTY STAINLESS STEEL CORRUGATED SHIELDS WITH A MINIMUM OF FOUR HEAVY DUTY BANDS
	WROUGHT COPPER WITH SOLDER ENDS	95.5 TIN / 4.0 COPPER / 0.5 SILVER SOLDER
	WROUGHT COPPER WITH SOLDER ENDS	95.5 TIN / 4.0 COPPER / 0.5 SILVER SOLDER

PLUMBING DRAWING LIST	
Sheet Number	Sheet Title
WA P001	COVER SHEET
WA P101	FIRST FLOOR VESTIBULE: PARTIAL PLANS
WA P201	DETAILS

2022 CAPITAL BOND PROJECT
PHASE 2WAVERLY ELEMENTARY
SCHOOL

ARCHITECT

LYON PLACE
WHITE PLAINS, NY 10601
14.915.9519
EMASIDESIGN.COM

ITE - CIVIL CONSULTING

THE LA GROUP
19 GRAHAM ROAD
HACA, NY 14850

STRUCTURAL CONSULTANT

REILLY TARANTINO ENGINEERING
1000 PARK BLVD., SUITE 209
MASSAPEQUA PARK, NY 11762

EP CONSULTANT

STANTEC
100 OAK STREET, SUITE 400
STAMFORD, CT 06905

SECURITY CONSULTANT

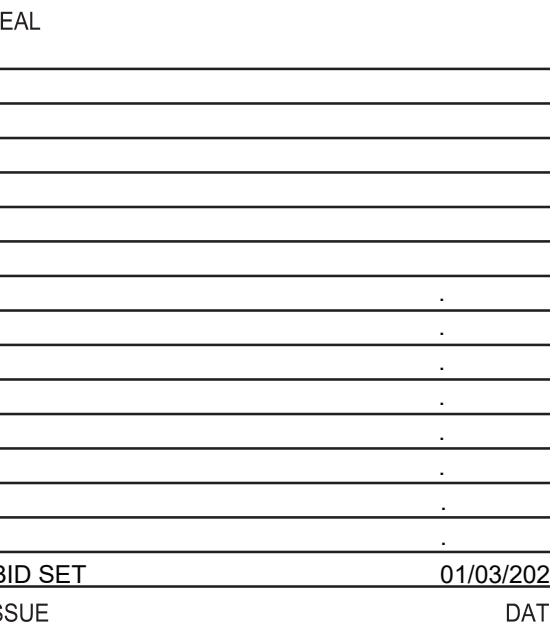
BUILDING TECHNOLOGY CONSULTING
92 BEDFORD STREET
RIDGewater, MA 02324

HAZARDOUS MATERIALS CONSULTANT

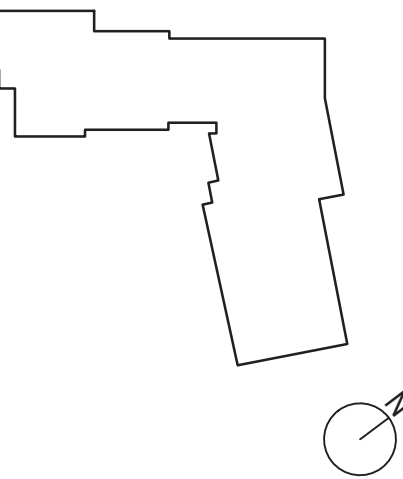
VSP
ONE PENN PLAZA
50 W 34TH ST., 4TH FLOOR
NEW YORK, NY 10119

LIGHTING CONSULTANT

GOLDSTICK LIGHTING DESIGN
29 FIFTH AVE, #204
ELHAM, NY 10803
14.693.0221



KEY PLAN



ED PROJECT NO. 66-03-01-03-0-002-01

EMASI PROJECT NO. 102-220

NA P101

© 2022 MEMASI. ALL RIGHTS RESERVED

U:\223030829\00_MEP\02_CAD\PHASE_2_EJFSD_VESTIBULES\SHEETS\WA\223030829_WA_P101.DWG

Merlino, Joseph

2022 CAPITAL BOND PROJECT
PHASE 2WAVERLY ELEMENTARY
SCHOOL

MEMASI

THE LA GROUP
79 GRAHAM ROAD
THACA, NY 14850

REILLY TARANTINO ENGINEERING
1000 PARK BLVD., SUITE 209
MASSAPEQUA PARK, NY 11762

STANTEC
100 OAK STREET, SUITE 400
STAMFORD, CT 06905

BUILDING TECHNOLOGY CONSULTING
92 BEDFORD STREET
RIDGewater, MA 02324

VSP
ONE PENN PLAZA
50 W 34TH ST., 4TH FLOOR
NEW YORK, NY 10119

GOLDSTICK LIGHTING DESIGN
29 FIFTH AVE, #204
ELHAM, NY 10803
14.693.0221



SCALE: NTS



SCALE: NTS

Merlino, Joseph

EAL

BID SET	01/03/2023
SUE	DATED

KEY PLAN



ED PROJECT NO.	66-03-01-03-0-002-01
EMASI PROJECT NO.	102-2202

NA P201

© 2022 MEMASI. ALL RIGHTS RESERVED