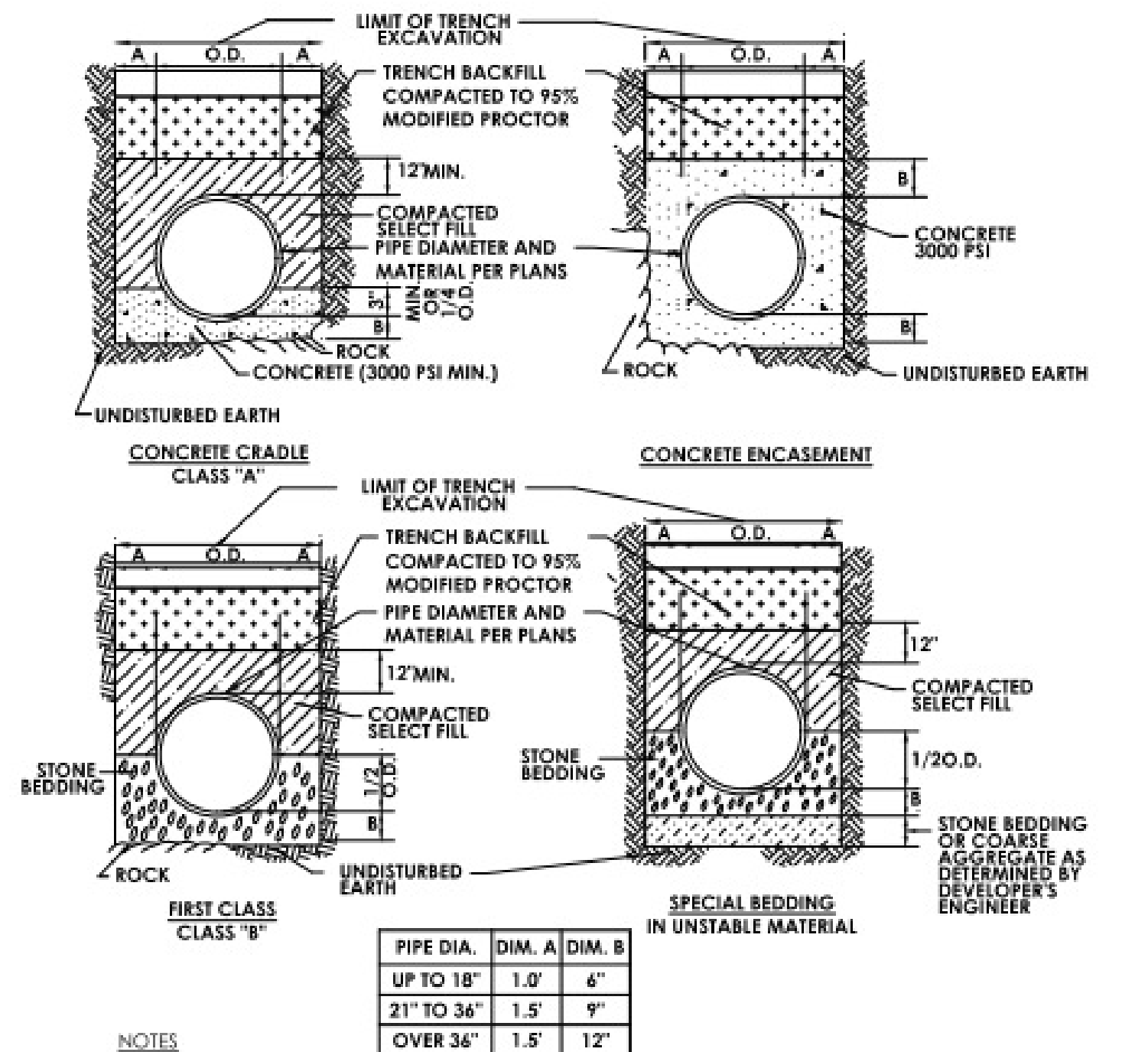


NY 101-398 X12.197 - Highland CSD 197-2201 HCSO 2022 CIP07 BMV 197-2201 - HBG Phase1_ARCH.dwg

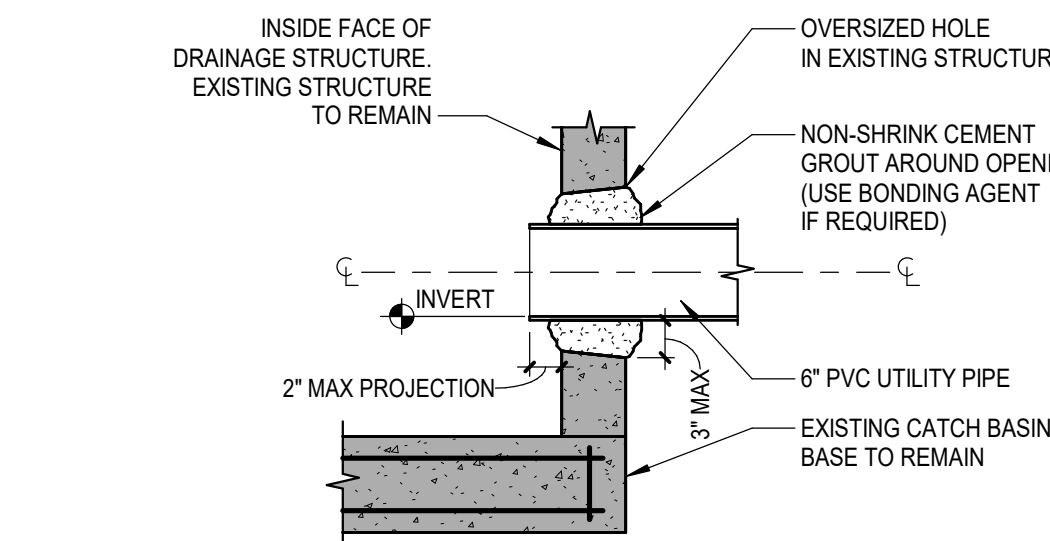


NOTES

- TRENCH BACKFILL SHALL BE NATURAL RUN-OF-BANK MATERIAL OR PROCESSED GRAVEL OR EXCAVATED MATERIAL FREE OF CLAY, ORGANIC MATERIAL, DEBRIS, FROZEN MATERIAL AND SHALL BE COMPACTED TO 95% MODIFIED PROCTOR.
- SELECT FILL SHALL BE SAND, GRAVEL, AND SIMILAR MATERIAL WHICH SHALL BE FREE FROM CLAY, LOAM, ORGANIC MATERIAL, DEBRIS, FROZEN MATERIAL AND SHALL CONTAIN ONLY SMALL AMOUNTS OF STONE, PEBBLES OR LUMPS OVER ONE INCH IN GREATEST DIMENSION BUT NONE OVER TWO INCHES IN GREATEST DIMENSION.
- STONE BEDDINGS SHALL MEAN APPROVED IMPORTED AGGREGATE MEETING THE REQUIREMENTS OF THE NYSDOT STANDARD SPECIFICATION SUBSECTION 703-0201 "CRUSHED STONE" PRIMARY SIZE 1 OR A MIXTURE OF PRIMARY SIZES 1 AND 2.
- COARSE AGGREGATE SHALL MEAN APPROVED IMPORTED AGGREGATE MEETING THE REQUIREMENTS OF THE NYSDOT STANDARD SPECIFICATION SUBSECTION 703-0201 "CRUSHED STONE" PRIMARY SIZE 3 AND/OR 4.
- CONTINUOUS DETECTABLE WARNING TAPE SHALL BE INSTALLED DURING BACKFILLING OF TRENCH FOR UNDERGROUND UTILITIES. LOCATE TAPE 12" BELOW FINISHED GRADE DIRECTLY OVER PIPING AND BELOW SUBGRADE UNDER PAVEMENT SLAB.
- TRENCHING SHALL BE IN ACCORDANCE WITH OSHA STANDARDS.

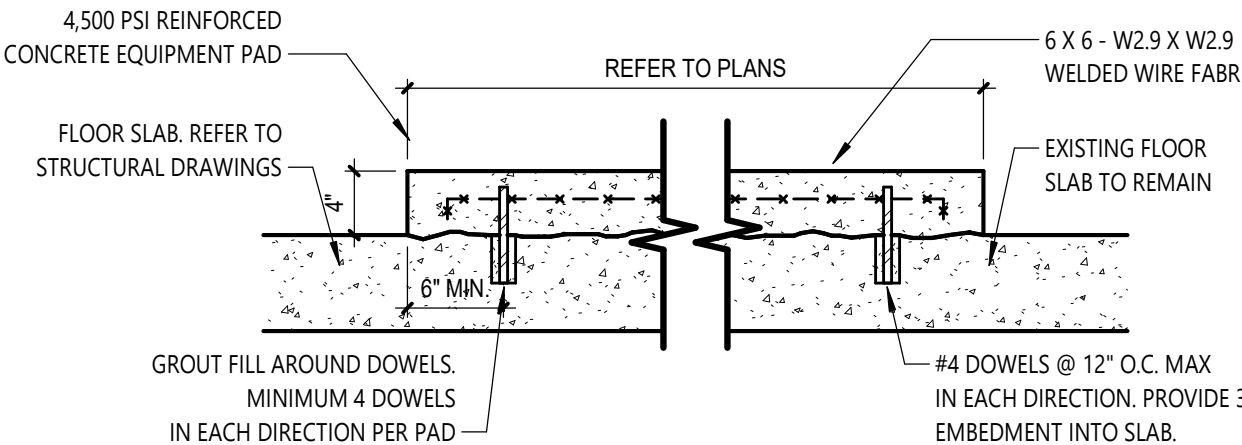
6 DETAIL - PIPE TRENCHING & BEDDING

A100 NOT TO SCALE



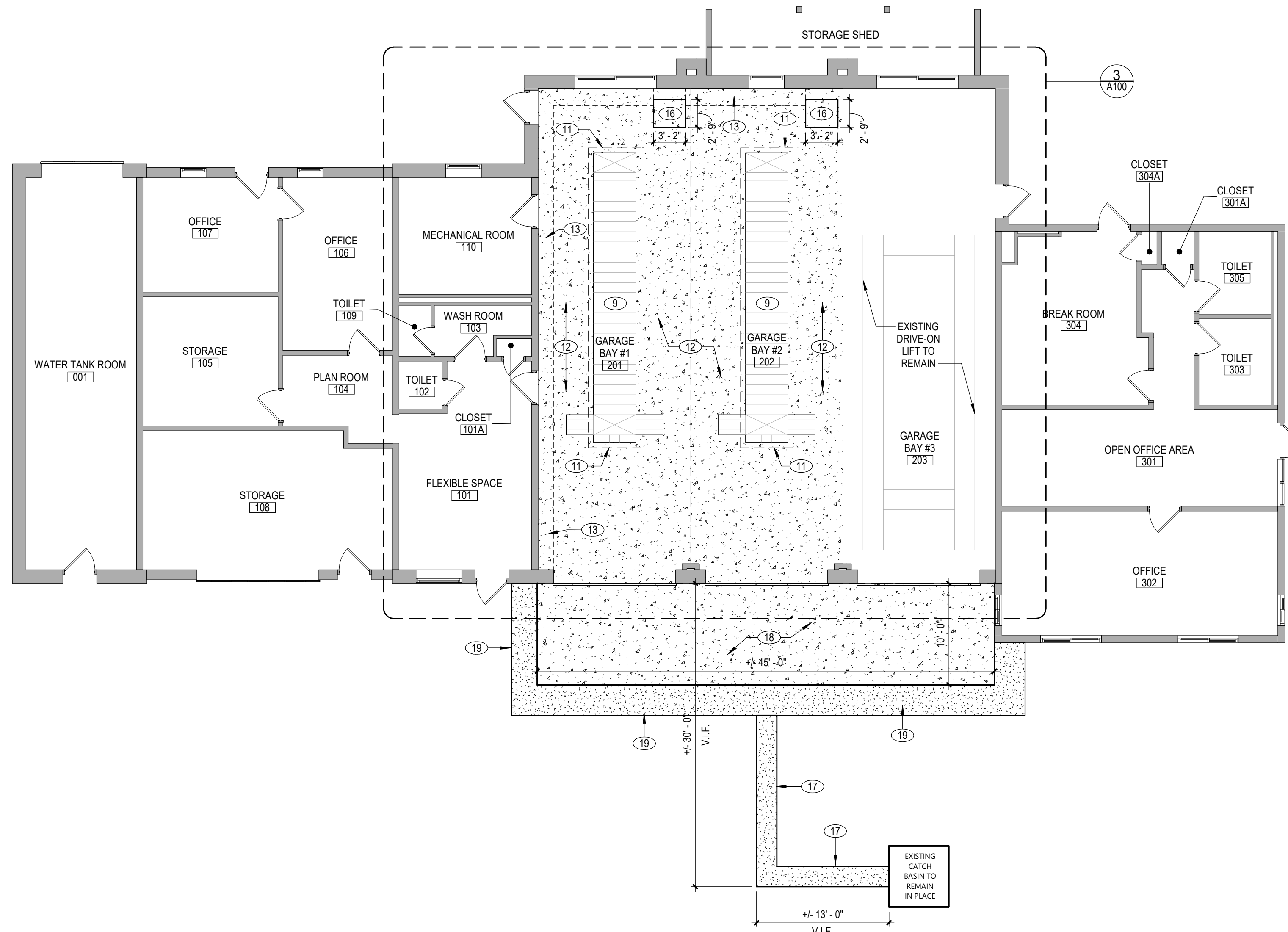
5 DETAIL - PIPE AT CATCH BASIN

A100 1" = 1'-0"



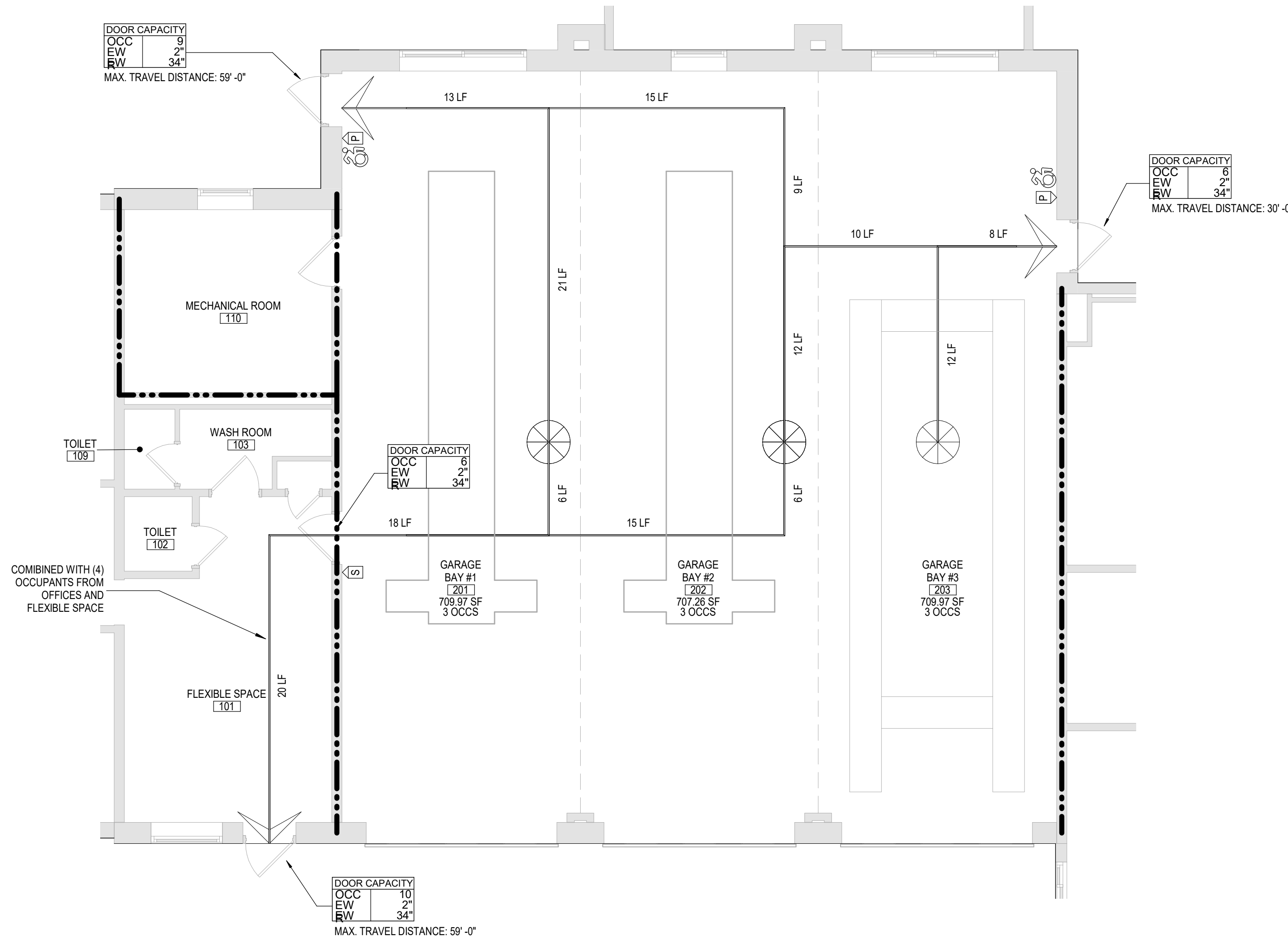
4 DETAIL - CONCRETE EQUIPMENT PAD

A100 1" = 1'-0"



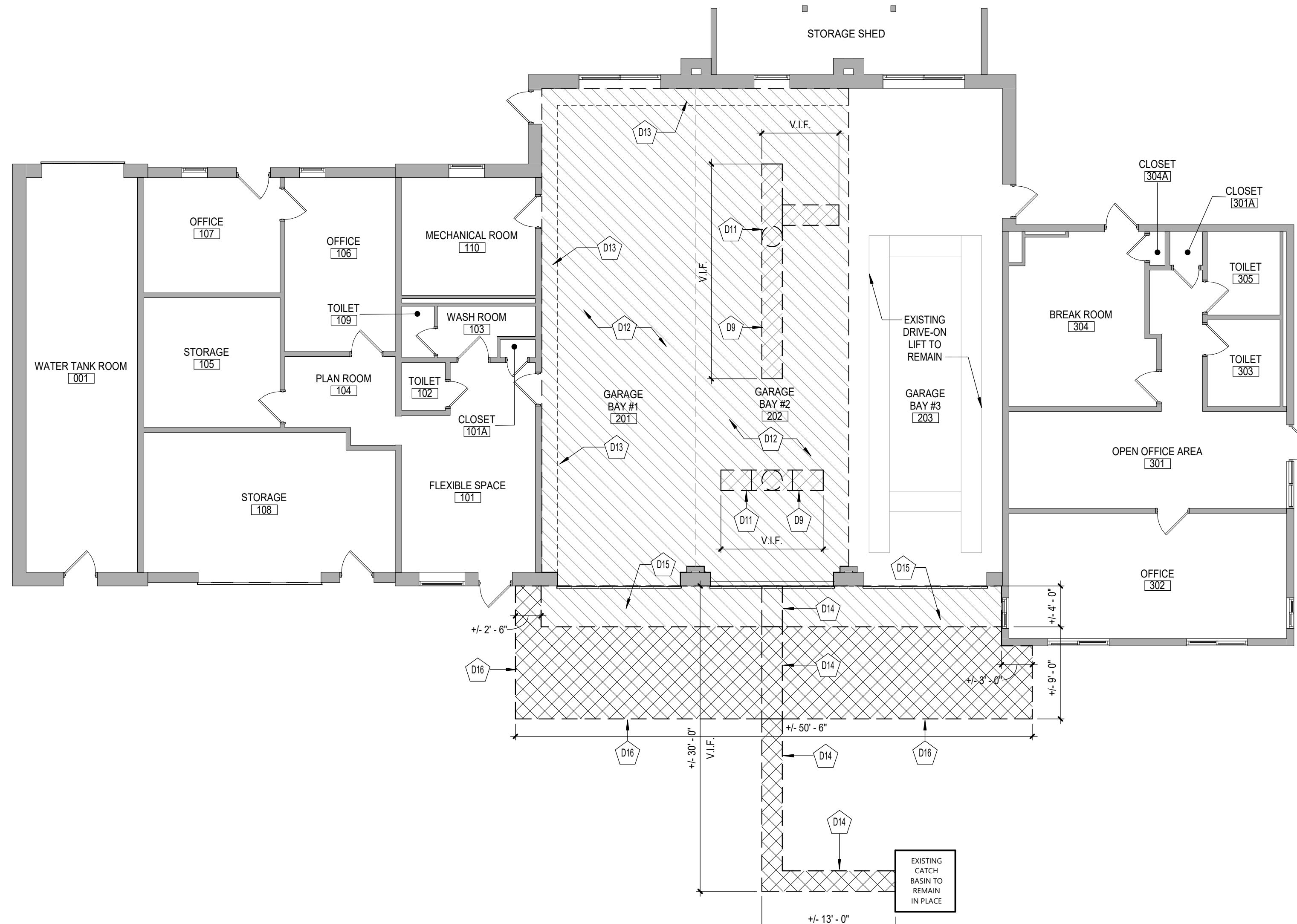
2 FIRST FLOOR NEW WORK PLAN

A100 1/8" = 1'-0"



3 FIRST FLOOR LIFE SAFETY PLAN - GARAGE BAYS

A100 3/16" = 1'-0"



1 FIRST FLOOR DEMOLITION PLAN

A100 1/8" = 1'-0"

LIFE SAFETY PLAN LEGEND

- PRIMARY EXIT
- SECONDARY EXIT
- RESCUE WINDOW (SECONDARY EXIT)
- ACCESSIBLE EXIT
- RESCUE ASSISTANCE STATION / AREA OF REFUGE
- NUMBER OF OCCUPANTS PER TABLE 1004.1.2 (ACTUAL NUMBER OF OCCUPANTS)
- REQUIRED EXIT WIDTH FOR DOOR BASED ON (OCCUPANT * 0.2)
- REQUIRED EXIT WIDTH FOR STAIRS BASED ON (OCCUPANT * 0.3)
- EXIT PATH OF TRAVEL (START - END)

ABBREVIATIONS

- DC DEFIBRILLATOR CABINET
- EW EXIT WIDTH PROVIDED
- EW EXIT WIDTH REQUIRED
- FE FIRE EXTINGUISHER
- FEC FIRE EXTINGUISHER CABINET
- OCCS NUMBER OF OCCUPANTS IN SPACE

SMOKE SEPARATION NOTES

- PER S.E.D. S105-1, FLOORS SMOKE SEPARATED
- PER S.E.D. S109.3.0.5, SMOKE SEPARATED ZONES APPROX. 30,000 SF OR LESS
- SMOKE BARRIER
- DUCTWORK PENETRATIONS REQUIRED
- SMOKE DAMPER
- PER S.E.D. S105-2.4, IN SPRINKLERED BUILDINGS, ALL CORRIDORS SHALL BE PROTECTED FROM THE SPREAD OF SMOKE FROM ADJACENT SPACES. DOOR CLOSERS AND SMOKE DAMPERS ARE REQUIRED

FIRE SEPARATION NOTES

- 1 HOUR RATED FIRE PARTITION
- 2 HOUR RATED FIRE PARTITION

CODE NARRATIVE

- 1960 ORIGINAL CONSTRUCTION
- CONSTRUCTION TYPE IIB
- FIRST FLOOR AREA: 3,370 SF GROSS
- CURRENT USE: 'B' - BUSINESS
- 1999 CONSTRUCTION
- CONSTRUCTION TYPE IIB
- FIRST FLOOR AREA: 4,812 SF GROSS
- CURRENT USE: 'B' - BUSINESS

- BUILDING AREA: (PER TABLE 500.2)
- PERMITTED FOR TYPE IIB / GROUP 'B'

- REQUIRED CORRIDOR FIRE-RESISTANCE RATING: (PER TABLE 1004.3.2.1)
- 1 HOUR

CODE NOTES

- ALL NEW WORK TO BE PERFORMED SHALL BE IN ACCORDANCE WITH THE FOLLOWING:
- 1. 2020 INTERNATIONAL BUILDING CODE
- 2. 2020 INTERNATIONAL EXISTING BUILDING CODE
- 3. NYS BUILDING CODE SUPPLEMENTS
- 4. ANSI A117.1-09
- 5. 2022 NYSED MANUAL OF PLANNING STANDARDS

ALL EXISTING CONDITIONS AND NEW WORK CONDITIONS CONTAIN THE FOLLOWING MAXIMUM TRAVEL DISTANCES:

- 1. EXIT ACCESS TRAVEL DISTANCE SHALL NOT EXCEED 200 FEET FOR UNSPRINKLERED BUILDINGS OF OCCUPANCY TYPE 'E'
- 2. ANY POINT IN ANY GROUND FLOOR CORRIDOR MUST BE WITHIN 150 FEET ALONG THE LINE OF TRAVEL TO AN EXTERIOR DOORWAY. ANY POINT IN A CORRIDOR OTHER THAN A GROUND FLOOR CORRIDOR SHALL NOT EXCEED 120 FEET ALONG THE LINE OF TRAVEL TO THE STAIR ENCLOSURE OF AN EXIT STAIRWAY.

ALL EXISTING CONDITIONS AND NEW WORK CONDITIONS CONTAIN THE FOLLOWING DEAD-END CORRIDOR INFORMATION:

- 1. DEAD-END CORRIDOR POCKETS SHALL NOT EXCEED A MAXIMUM DEPTH OF 1 1/2 TIMES THE WIDTH OF THE POCKET, OR 1 1/2 TIMES THE WIDTH OF THE CORRIDOR, WHICHEVER IS LESS. MAX. DEAD- END DISTANCE IS 20'.

CONSTRUCTION HISTORY

DATE	DESCRIPTION
1960	
1960	
1999	

KEY NOTES - DEMOLITION

(X)	DESCRIPTION
D0	REMOVE EXISTING POST-TYPE BUS LIFT SYSTEM IN ITS ENTIRETY INCLUDING PIT, CONTROLS, EQUIPMENT, AND ACCESSORIES.
D11	REMOVE EXISTING BUS LIFT PIT FOUNDATION SYSTEM. COORDINATE WITH STRUCTURAL DRAWINGS.
D12	REMOVE EXISTING FLOOR SLAB TO EXTENTS INDICATED. COORDINATE WITH STRUCTURAL DRAWINGS.
D13	ALL EXISTING MOVABLE FURNITURE, EQUIPMENT, SHELVE, ETC. SHALL BE CAREFULLY REMOVED AND TEMPORARILY RELOCATED TO ACCOMMODATE FLOOR SLAB WORK. ALL EXISTING NONMOVABLE OR BUILT-IN FURNITURE, EQUIPMENT, SHELVE, ETC. SHALL REMAIN IN PLACE.
D14	TRENCH EXISTING ASPHALT OR CONCRETE TO EXISTING OIL WATER SEPARATOR TO ACCOMMODATE UNDERGROUND TRENCH DRAIN PIPING WORK.
D15	REMOVE EXISTING CONCRETE APRON IN ITS ENTIRETY.
D16	REMOVE EXISTING ASPHALT PAVEMENT AS REQUIRED TO ACCOMMODATE NEW WORK.

KEY NOTES - NEW WORK

(X)	DESCRIPTION
9	NEW BUS LIFT, CONTROLS, EQUIPMENT, AND ACCESSORIES TO BE PROVIDED BY BUS LIFT VENDOR. COORDINATE WITH STRUCTURAL DRAWINGS.
11	PROVIDE NEW BUS LIFT PIT FOUNDATION SYSTEM. COORDINATE WITH STRUCTURAL DRAWINGS.
12	PROVIDE NEW CONCRETE SLAB TO EXTENTS INDICATED. COORDINATE WITH STRUCTURAL DRAWINGS.
13	REINSTALL MOVABLE FURNITURE, EQUIPMENT, SHELVE, ETC. THAT WAS TEMPORARILY RELOCATED PER THE DIRECTION OF THE OWNER.
16	PROVIDE NEW CONCRETE EQUIPMENT PAD AS INDICATED TO ACCOMMODATE BUS LIFT CONTROL CONSOLE. COORDINATE FINAL LOCATION IN THE FIELD.
17	BACKFILL AREA WHERE PREVIOUSLY TRENCHED AND PROVIDE NEW PAVEMENT. REFER TO TRENCHING AND PAVING DETAILS FOR ADDITIONAL INFORMATION.
18	PROVIDE NEW SLAB ON GRADE CONCRETE APRON.
19	PROVIDE ASPHALT PAVEMENT PATCHING AROUND NEW CONCRETE APRON AS REQUIRED.

COPYRIGHT © ALL RIGHTS RESERVED

19 Front St., Newburgh - New York 12550-7601
845-561-3179 www.csarch.com

Consultant

HIGHLAND CENTRAL SCHOOL DISTRICT
BUS GARAGE

2022 CAPITAL IMPROVEMENT PROJECT - PHASE 1

Project Title



Expiration Date: 02/28/2025

DATE	DESCRIPTION

Drawn By: C34
Checked By: C34
Proj. #: 62-08-03-84-5-002-011
CSArch Proj. #: 197-2201.01
Issued for Bid: 08/18/23

Sheet Title

FIRST FLOOR
PLANS AND
DETAILS

Sheet No.

HBG
A100

CONSTRUCTION DOCUMENTS