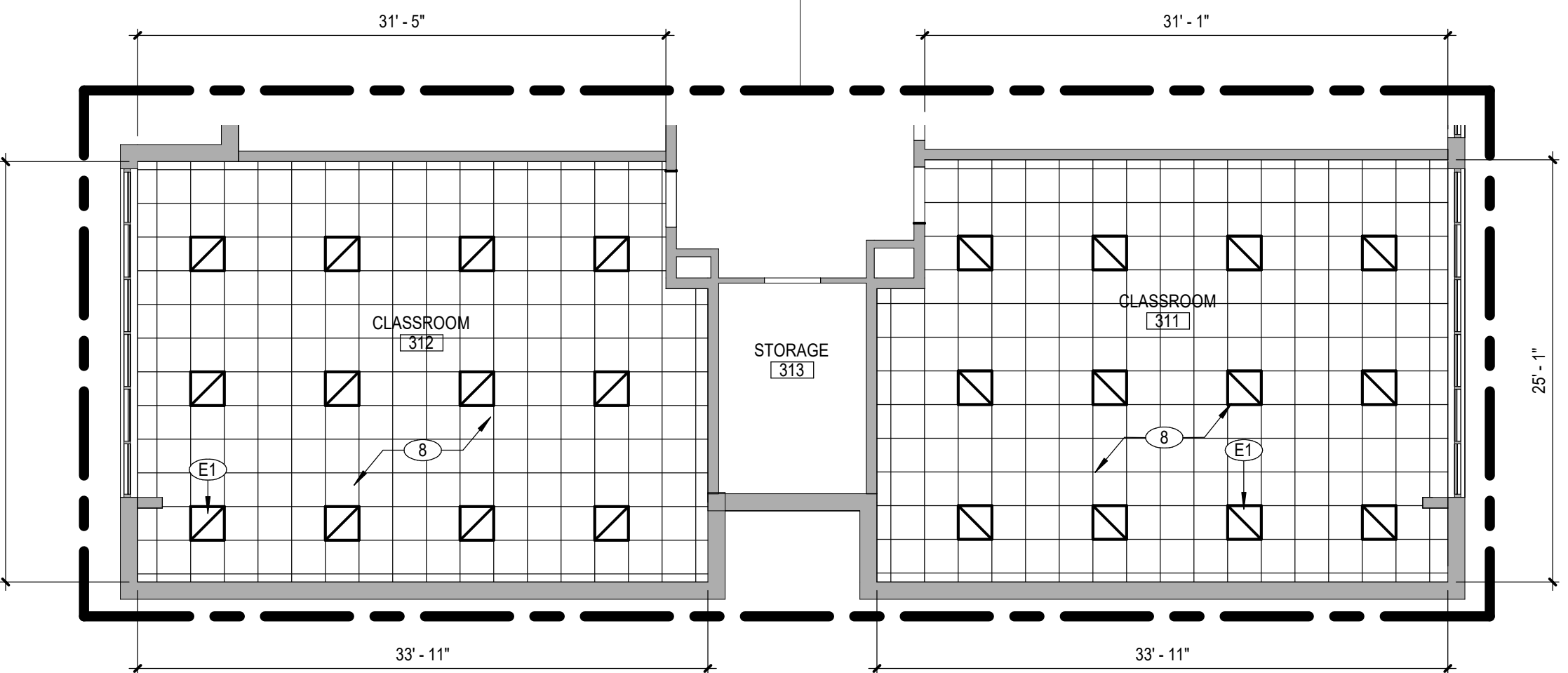


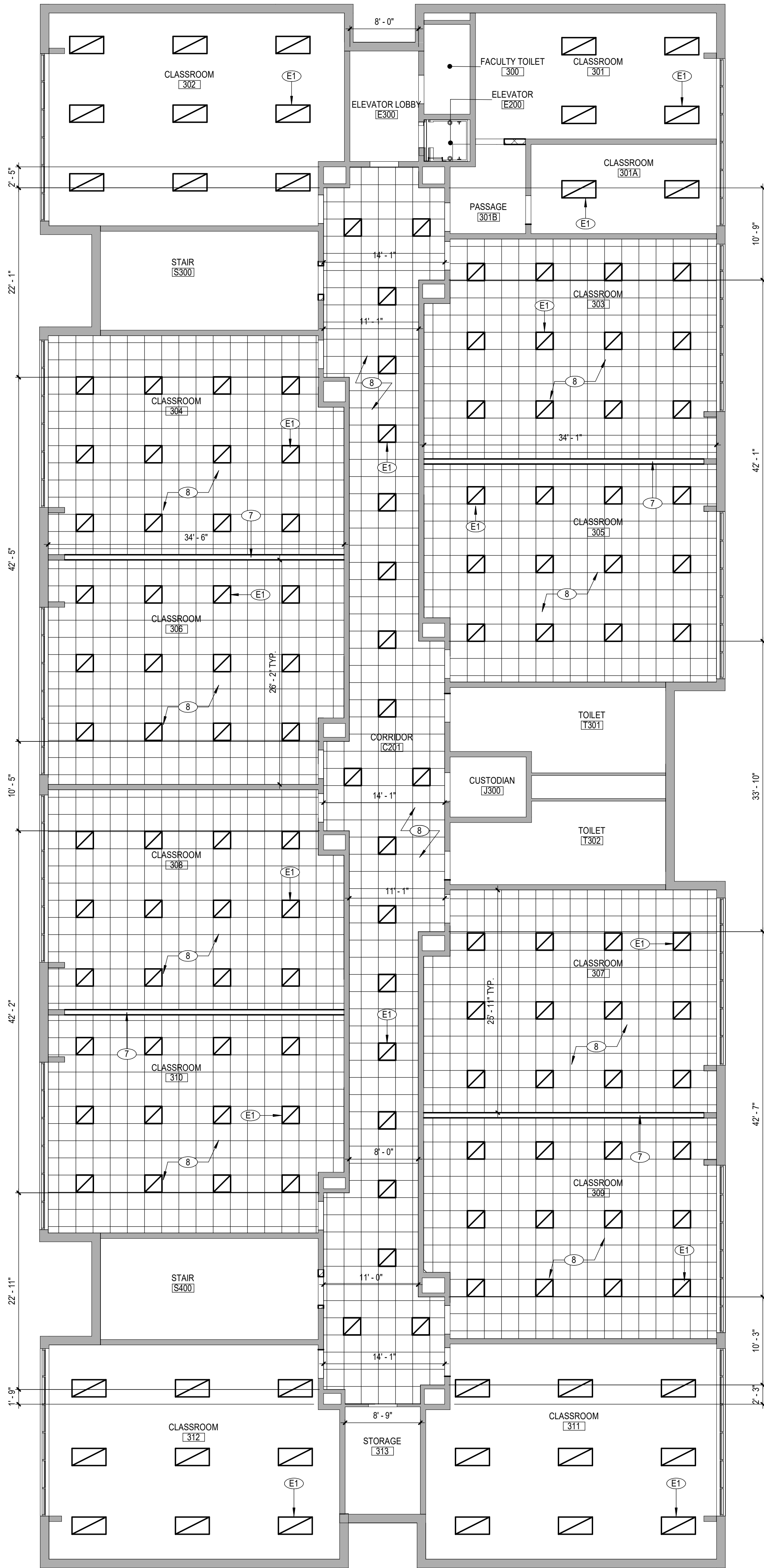
ADD Alternate No.  
GC-02-001-ES

SCOPE OF WORK IN AREA  
OMITTED FROM VIEW IS BASE BID



ADD Alternate No.  
GC-02-001-ES

**2** SECOND FLOOR NEW WORK RCP - AREA 'E'  
A825 1/8" = 1'-0"



**1** SECOND FLOOR NEW WORK RCP - AREA 'E'  
A825 1/8" = 1'-0"

#### CEILING NOTES

1. INSTALL CEILING GRIDS CENTERED IN THE ROOM. UNO. IN ROOMS OTHER THAN RECTANGULAR SHAPED, INSTALL GRIDS CENTERED ON WALLS OR OTHER BUILT FEATURES AS INDICATED.
2. INSTALLATION HEIGHTS OF THE CEILINGS MAY VARY SLIGHTLY FROM PLANS IN ROOMS WITH EXTERIOR WINDOWS. ACTUAL CEILING HEIGHT TO BE VERIFIED IN THE FIELD.
3. FINAL INSTALLED CEILINGS SHALL HAVE HEIGHTS COORDINATED WITH OTHER CONTRACTORS WITH ABOVE CEILING WORK AND VERIFIED WITH FIELD CONDITIONS. ALL CHANGES IN CONFIGURATION OR HEIGHTS ARE TO BE APPROVED BY THE ARCHITECT.

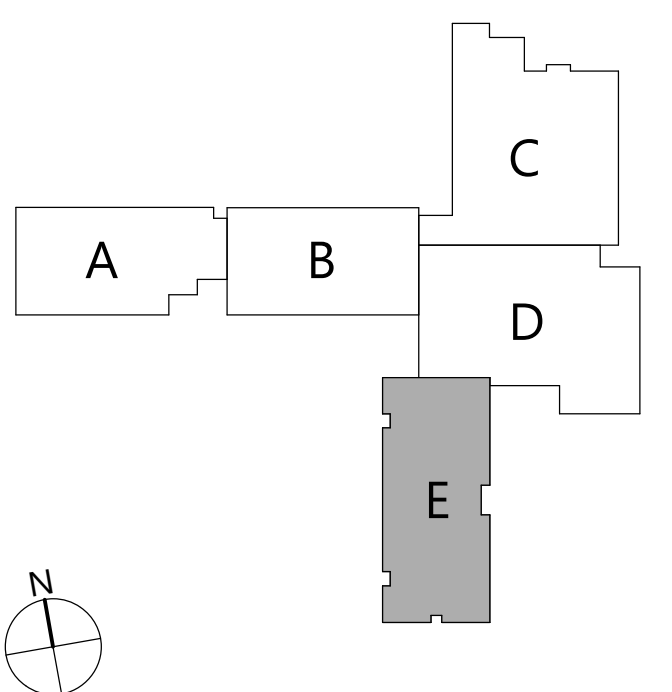
#### CEILING LEGEND

- GWB OR PLASTER CEILING, REFER TO DETAILS AND ROOM FINISH SCHEDULE
- SUSPENDED ACOUSTICAL PANEL CEILING SYSTEM
- CEILING HEIGHT ABOVE FINISHED FLOOR
- LIGHT FIXTURES  
COORDINATE NEW WORK WITH ELECTRICAL DRAWINGS
- HVAC EQUIPMENT  
COORDINATE NEW WORK WITH MECHANICAL DRAWINGS

#### KEY NOTES - NEW WORK

DESCRIPTION	
7	PROVIDE PERMANENT PARTITION BETWEEN CLASSROOMS. REFER TO SECTION DETAILS. COORDINATE POWER REQUIREMENTS WITH ELECTRICAL DRAWINGS.
8	PROVIDE NEW ACT CEILING AS SPECIFIED. COORDINATE WITH MECHANICAL AND ELECTRICAL DRAWINGS.
E1	LIGHT FIXTURE, TYPICAL. REFER TO ELECTRICAL DRAWINGS.

#### KEYPLAN



19 Front St., Newburgh, New York 12550-7601  
845.561.3379 www.csarch.com

CSARCH

Consultant

## HIGHLAND CENTRAL SCHOOL DISTRICT HIGHLAND ELEMENTARY SCHOOL 2022 CAPITAL IMPROVEMENT PROJECT - PHASE 1

Project Title



Expiration Date: 02/28/2025

DATE	DESCRIPTION

Drawn By:	CSA
Checked By:	CSA
Proj. #:	62-08-03-84-0-010-014
CSArch Proj. #:	197-2201.01
Issued for Bid:	08/18/23

Sheet Title

SECOND  
FLOOR NEW  
WORK RCP -  
AREA 'E'

Sheet No.

HES  
A825

CONSTRUCTION DOCUMENTS

COPYRIGHT © ALL RIGHTS RESERVED