

1 Area B First Floor Electrical Demolition Plan
ED311 Scale: 1/8" = 1'-0"

General Notes:

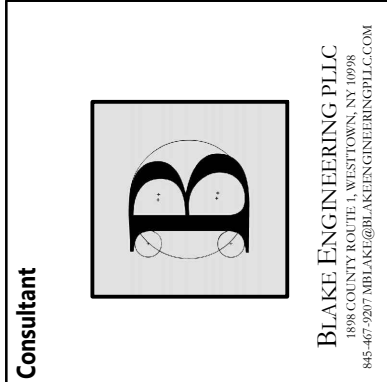
1. IN ALL AREAS WITH EXISTING CEILINGS TO REMAIN, ELECTRICAL CONTRACTOR IS RESPONSIBLE TO REMOVE AND REINSTALL CEILING TILES AND GRID AS NECESSARY TO COMPLETE REMOVAL AND INSTALLATION OF LIGHTING, WIRING, CONDUIT, JUNCTION BOXES, ETC.
2. PRIOR TO REPLACEMENT OF ELECTRICAL PANELS, PERFORM FIELD WORK TO DETERMINE QUANTITIES, SIZES AND RATINGS OF ALL EXISTING BRANCH CIRCUIT BREAKERS. PROVIDE REPLACEMENT PANELS WITH SAME BREAKER CONFIGURATION FOR THE EXISTING BRANCH CIRCUITS.
3. MAINTAIN ALL EXISTING BRANCH CIRCUITS. MODIFY AS NECESSARY TO EXTEND EXISTING CIRCUITRY AND CONNECT TO REPLACEMENT PANELS.

Key Notes:

1. DISCONNECT, REMOVE & PROPERLY DISPOSE OF EXISTING DISTRIBUTION PANEL. MAINTAIN EXISTING DISTRIBUTION WIRING FOR CONNECTION TO REPLACEMENT PANEL. REFER TO ONE-LINE DIAGRAM FOR INSTRUCTIONS FOR EXISTING CONDUITS AND FEEDERS.
2. DISCONNECT, REMOVE & PROPERLY DISPOSE OF EXISTING TRANSFORMER. REFER TO ONE-LINE DIAGRAM FOR INSTRUCTIONS FOR EXISTING CONDUITS AND FEEDERS.

19 Front St. - Newburgh - New York 12550-7601
845-561-3179 www.csarchp.c.c.o.m

CSARCH



HIGHLAND CENTRAL SCHOOL DISTRICT
HIGHLAND ELEMENTARY SCHOOL
2022 CAPITAL IMPROVEMENT PROJECT - PHASE 1

Project Title



DATE	DESCRIPTION

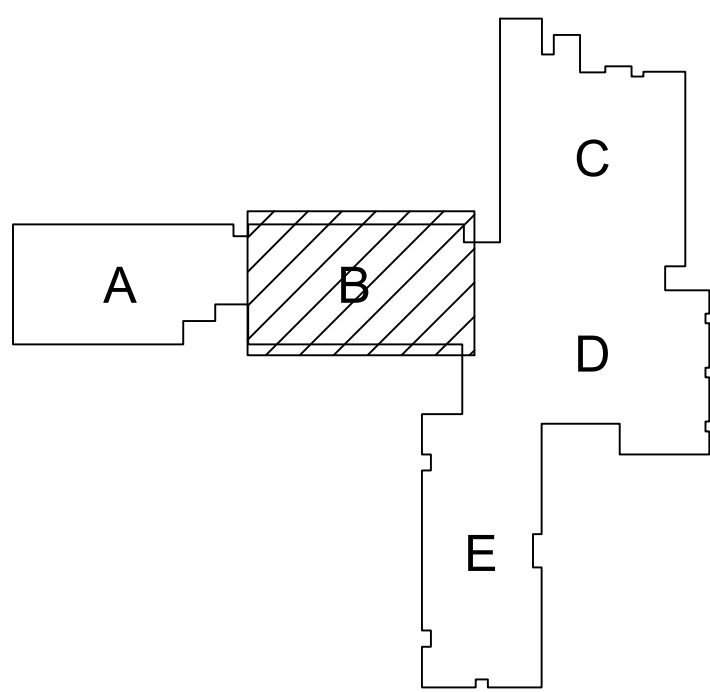
Drawn By: BJK
Checked By: 62-08-03-04-0-010-014
Proj. #: 197-2201.01
CSArch Proj. #: 8/18/23
Issued for Bid:

Sheet Title
AREA B FIRST FLOOR ELECTRICAL DEMOLITION PLAN

Sheet No.
HES
ED311

CONSTRUCTION DOCUMENTS

KEY PLAN



COPYRIGHT © ALL RIGHTS RESERVED