

# HIGHLAND CENTRAL SCHOOL DISTRICT HIGHLAND HIGH SCHOOL 2022 CAPITAL IMPROVEMENT PROJECT - PHASE 1

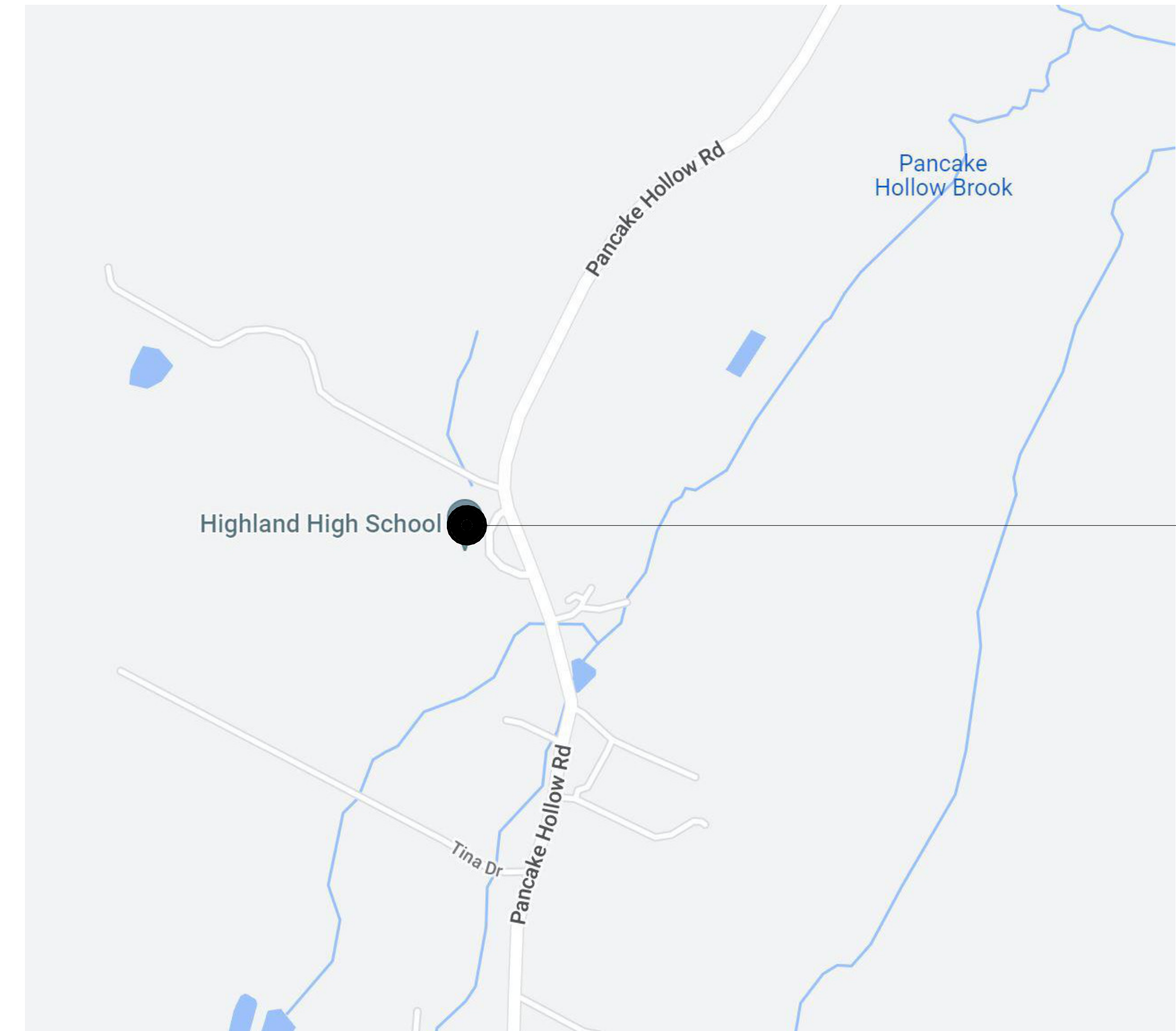


ISSUED FOR BID: 08/18/23

**CSARCH** - ARCHITECTS  
PASSERO ASSOCIATES - SITE/CIVIL & STRUCTURAL ENGINEERS  
BLAKE ENGINEERING, PLLC - M.E.P. ENGINEERS  
QUALITY ENVIRONMENTAL SOLUTIONS & TECHNOLOGIES, INC. - HAZARDOUS MATERIALS DESIGNER

STATE EDUCATION DEPARTMENT PROJECT CONTROL NUMBER:  
HIGHLAND HIGH SCHOOL 62-08-03-04-0-009-014  
THE DESIGN OF THIS PROJECT CONFORMS TO APPLICABLE PROVISIONS OF THE NEW YORK STATE UNIFORM FIRE PREVENTION AND BUILDING CODE, THE NEW YORK STATE ENERGY CONSERVATION CONSTRUCTION CODE, AND THE MANUAL OF PLANNING STANDARDS OF THE NEW YORK STATE EDUCATION DEPARTMENT.

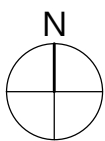
CSArch PROJECT NO. 197-2201.01



HIGHLAND HIGH SCHOOL  
320 PANCAKE HOLLOW ROAD,  
HIGHLAND, NY 12528

VICINITY MAP

NTS



**DRAWING LIST**

**HIGHLAND HIGH SCHOOL (HHS)**

GENERAL DRAWINGS

HHS G000 COVER  
HHS G001 SYMBOLS, ABBREVIATIONS, KEY PLANS, AND MISC.

CIVIL DRAWINGS

HHS C130 EXISTING CONDITIONS, DEMOLITION, & PROPOSED CONDITIONS PLANS

LIFE SAFETY DRAWINGS

HHS LS111 FIRST FLOOR LIFE SAFETY PLAN – AREA 'A'  
HHS LS112 FIRST FLOOR LIFE SAFETY PLAN – AREA 'B'  
HHS LS115 FIRST FLOOR LIFE SAFETY PLAN – AREA 'E'

HAZARDOUS MATERIALS DRAWINGS

HHS HAZ000 ASBESTOS ABATEMENT NOTES  
HHS HAZ101 HIGH SCHOOL FIRST FLOOR ABATEMENT PLAN

ARCHITECTURAL DEMOLITION DRAWINGS

HHS AD110 OVERALL FIRST FLOOR DEMOLITION PLAN  
HHS AD111 FIRST FLOOR DEMOLITION PLAN – AREA 'A'  
HHS AD112 FIRST FLOOR DEMOLITION PLAN – AREA 'B'  
HHS AD113 FIRST FLOOR DEMOLITION PLAN – AREA 'C'  
HHS AD115 FIRST FLOOR DEMOLITION PLAN – AREA 'D'  
HHS AD400 OVERALL ROOF DEMOLITION PLAN

ARCHITECTURAL DRAWINGS

HHS A110 OVERALL FIRST FLOOR NEW WORK PLAN  
HHS A111 FIRST FLOOR NEW WORK PLAN – AREA 'A'  
HHS A112 FIRST FLOOR NEW WORK PLAN – AREA 'B'  
HHS A113 FIRST FLOOR NEW WORK PLAN – AREA 'C'  
HHS A115 FIRST FLOOR NEW WORK PLAN – AREA 'D'  
HHS A351 SECTION DETAILS  
HHS A400 OVERALL ROOF NEW WORK PLAN

