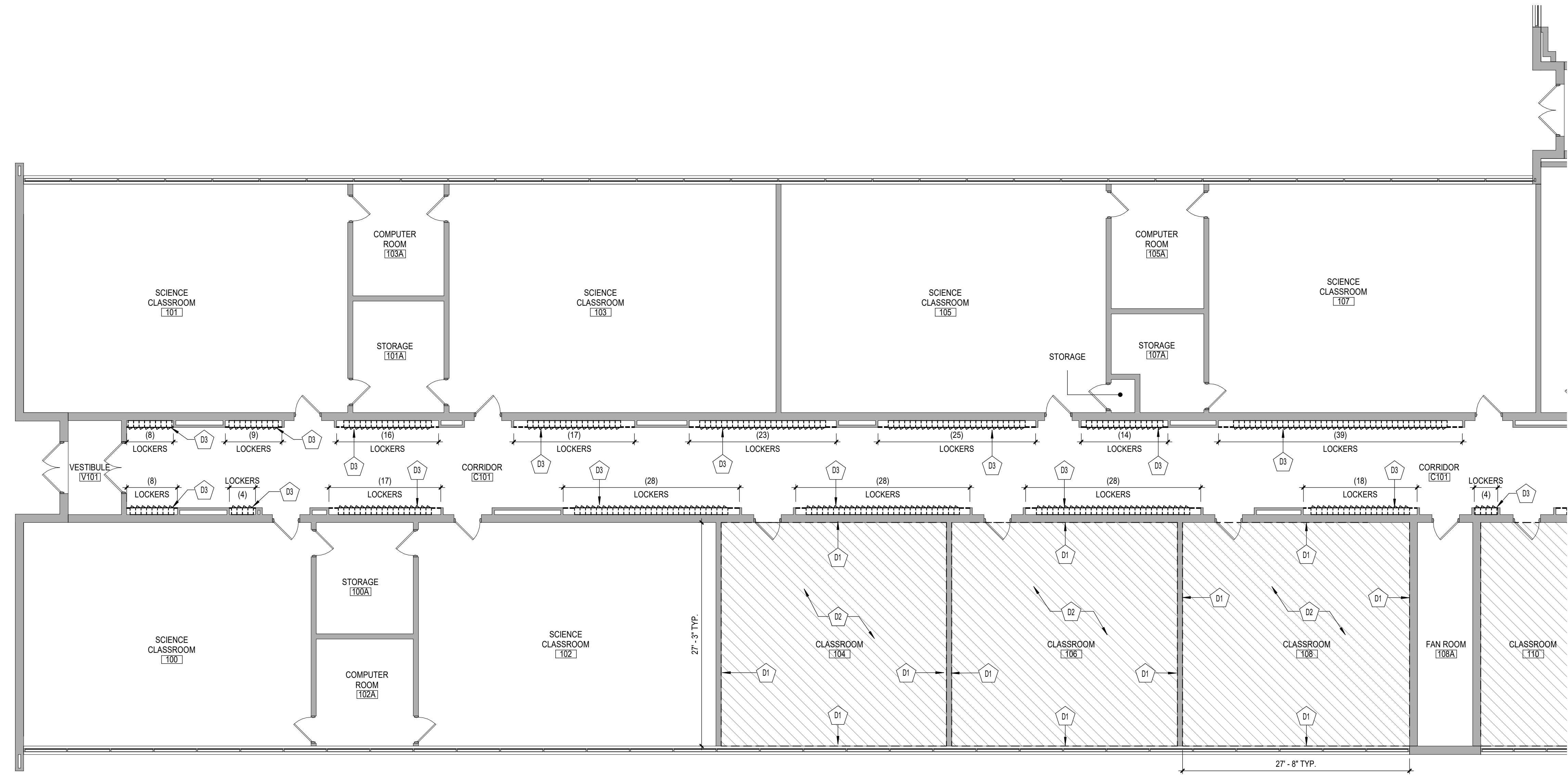


C:\Users\dmliller\Documents\197-2201 - HHS Phase1_ARCH_dmliller303.rvt



1 FIRST FLOOR DEMOLITION PLAN - AREA 'A'
AD111 1/8" = 1'-0"

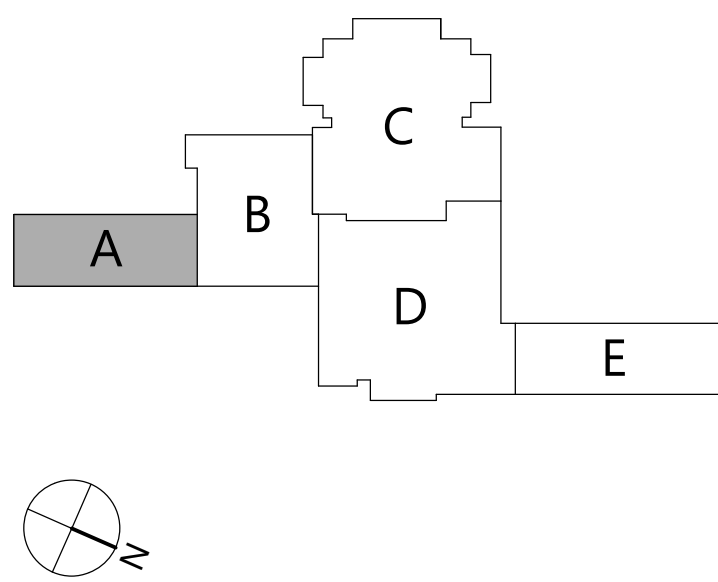
GENERAL NOTES

- COORDINATE ALL REMOVALS WITH NEW CONSTRUCTION.
- PATCH AND REPLACE EXISTING AND NEWLY CREATED HOLES IN WALLS (DUE TO REMOVAL) WITH MATERIALS TO MATCH EXISTING CONSTRUCTION.
- SALVAGED ITEMS SHALL BE TURNED OVER TO OWNER UNO.
- ALL KEYED REMOVALS SHALL INCLUDE REMOVAL OF ANY AND ALL ANCHORING SYSTEMS INCLUDING OBJECTS EMBEDDED INTO EXISTING WALLS.
- REFER TO ASBESTOS AND MEP DRAWINGS FOR ADDITIONAL REMOVAL INFORMATION.
- PROVIDE TEMPORARY SHORING AS NECESSARY AT ALL AREAS OF WALL REMOVAL AND NEW WALL PENETRATIONS.
- DRILL CORNERS OF ALL NEW SAWCUT OPENING PRIOR TO SAWCUTTING, TO PREVENT CUTTING INTO SCHEDULED CONSTRUCTION TO REMAIN.
- ALL EXISTING LOCKERS ARE 8" WIDE x 10" DEEP & SINGLE TIER.

KEY NOTES - DEMOLITION

X	DESCRIPTION
D1	REMOVE WALL MOUNTED ACOUSTICAL PANELS IN THEIR ENTIRETY AND PATCH AS REQUIRED. COORDINATE WITH HAZARDOUS MATERIALS DRAWINGS.
D2	REMOVE EXISTING RESILIENT TILE FLOORING, WALL BASE, AND MASTIC IN ITS ENTIRETY. COORDINATE WITH HAZARDOUS MATERIALS DRAWINGS.
D3	EXISTING CORRIDOR LOCKERS INCLUDING OVERHEAD GYPSUM PLASTER SOFFIT AND RUBBER WALL BASE TO BE REMOVED. COORDINATE WITH HAZARDOUS MATERIAL DRAWINGS.

KEYPLAN



19 Front St., Newburgh, New York 12550-7601
845.561.1317 www.csarch.com

CSARCH

Consultant

HIGHLAND CENTRAL SCHOOL DISTRICT HIGHLAND HIGH SCHOOL 2022 CAPITAL IMPROVEMENT PROJECT - PHASE 1

Project Title



Expiration Date: 02/28/2025

DATE	DESCRIPTION

Drawn By: CSA
Checked By: CSA
Proj. #: 62-08-03-04-0-009-014
CSArch Proj. #: 197-2201.01
Issued for Bid: 08/18/23

Sheet Title
FIRST FLOOR
DEMOLITION
PLAN - AREA
'A'

Sheet No.
HHS
AD111

CONSTRUCTION DOCUMENTS

COPYRIGHT © ALL RIGHTS RESERVED