

HAZARDOUS MATERIALS CONSULTANT
WSP
ONE PENN PLAZA
50 W 34TH ST., 4TH FLOOR
NEW YORK, NY 10119

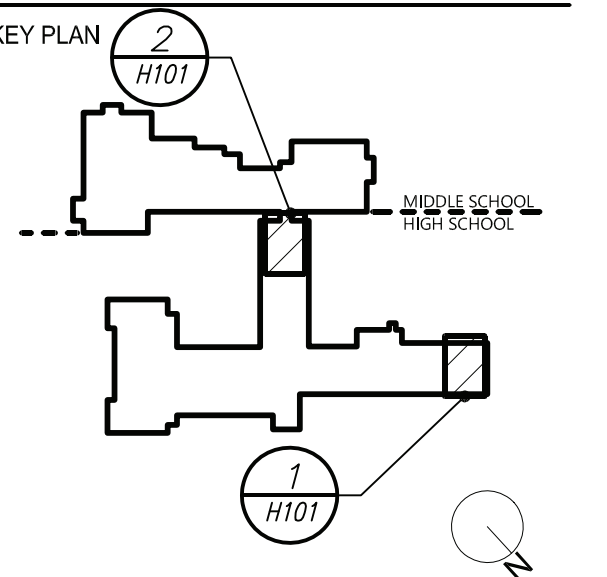


- REMOVAL NOTES:**
- 1) THE SCOPE OF REMOVAL SHOWN ON "REMOVALS" DRAWINGS IS DIAGRAMMATIC ONLY AND INDICATES THE INTENT OF THE WORK TO BE PERFORMED AND NOT THE COMPLETE SCOPE OF DEMOLITION AND/OR REMOVAL WORK. IT SHALL BE THE RESPONSIBILITY OF THIS CONTRACTOR TO REMOVE ANY RELATED MECHANICAL DEVICES EVEN IF NOT SPECIFICALLY INDICATED TO BE REMOVED ON THESE DRAWINGS OR OTHERWISE DERIVED FROM ANY LAW.
- 2) DEVICES SHOWN CROSS HATCHED ON DRAWINGS ARE ITEMS TO BE REMOVED. ANY DEVICES REMOVED SHALL INCLUDE (BUT SHALL NOT BE LIMITED TO) THE REMOVAL OF ALL ASSOCIATED PIPING, CONTROLS, ETC. THAT ARE NOT INCORPORATED IN THE NEW LAYOUT, UNTIL SUCH REMOVAL IS COMPLETE, THIS CONTRACTOR SHALL PERFORM ALL WORK REQUIRED TO INSURE CONTINUITY OF SERVICE TO EXISTING REMAINING EQUIPMENT. NO EXTRAS RELATING TO THE SCOPE OF WORK DESCRIBED WILL BE ALLOWED.
- 3) EQUIPMENT, PIPING, ETC. REQUIRED TO RECONNECT SHALL BE INSTALLED CONCEALED WITHIN THE NEW SUSPENDED CEILINGS, PARTITIONS AND/OR WALLS, FLOORS, NO SURFACE MOUNTED OR EXPOSED EQUIPMENT, PIPING, ETC., SHALL BE PERMITTED, UNLESS SPECIFICALLY INDICATED.
- 4) ALL ITEMS TO BE REMOVED SHALL BE REVIEWED WITH THE OWNER PRIOR TO REMOVAL. OWNER SHALL HAVE FIRST SALVAGE RIGHTS. ITEMS THE OWNER WISHES TO KEEP SHALL BE REMOVED WITH CARE AND SHOWN AS SUCH BY OWNER. ITEMS THE OWNER DOES NOT WISH TO KEEP SHALL BE REMOVED FROM THE SITE AND DISPOSED OF PROPERLY.

① PAINT NEW AND EXISTING PIPING AND DUCTWORK. COLOR AS DIRECTED BY ARCHITECT.

HVAC LEGEND	
	POINT OF CHANGE IN DUCT SIZE NEW DUCTWORK
	THERMAL ACOUSTIC LINING-DUCT SIZES ON PLANS ARE CLEAR INSIDE DIMENSIONS
	FLEXIBLE CONNECTION
	NEW DUCTWORK
	POINT OF CHANGE IN DUCT SIZE
	SQUARE DUCT WITH TURNING VANES
	TYPE 1 SEE SCHEDULE
	NEW 4-WAY CEILING DIFFUSER
	TYPE 2 SEE SCHEDULE
	NEW 3-WAY CEILING DIFFUSER
	TYPE 3 SEE SCHEDULE
	NEW 2-WAY CEILING DIFFUSER
	TYPE 4 SEE SCHEDULE
	CEILING EXHAUST/RETURN REGISTER
	TYPE 5 SEE SCHEDULE
	REGISTER/DIFFUSER IDENTIFICATION
	DUCT DROP; DUCT RISE
	DUCT MTD, MANUAL AIR VOLUME DAMPER (W/LOCKING DEVICE)
	MOTORIZED AIR VOLUME DAMPER (W/ACCESS DOOR)
	FIRE DAMPER (U.L. APPROVED) & ACCESS DOOR
	EXISTING HOT WATER HEATING SUPPLY PIPING
	EXISTING HOT WATER RETURN / HOT WATER REVERSE RETURN PIPING
	HOT WATER HEATING SUPPLY PIPING
	HOT WATER RETURN / HOT WATER REVERSE RETURN PIPING
	LIQUID REFRIGERANT PIPING
	SUCTION REFRIGERANT PIPING
	CONDENSATE DRAIN PIPING
	FLOW DIRECTION WITHIN PIPE CONNECTION TO EQUIPMENT ABOVE
	GATE VALVE (HORIZONTAL/VERTICAL)
	COMBINATION BALANCING & SHUT-OFF VALVE (CIRCUIT SETTER)
	2-WAY CONTROL VALVE
	CHECK VALVES
	PIPE CONNS. (BOTTOM, TOP 45 OR 90; PIPE UP)
	EXPANSION JOINT, ANCHOR AND GUIDES
	UNIT VENTILATOR IDENTIFICATION
	UNIT VENTILATOR INTAKE IDENTIFICATION
	CABINET HEATER IDENTIFICATION
	DUST COLLECTOR IDENTIFICATION
	ENERGY RECOVERY UNIT IDENTIFICATION
	HEAT PUMP UNIT IDENTIFICATION
	INDOOR FANCOIL UNIT IDENTIFICATION
	FLOW SELECTOR UNIT IDENTIFICATION
	CABINET UNIT HEATER IDENTIFICATION
	HOT WATER CONVECTOR IDENTIFICATION
	HOT WATER COIL IDENTIFICATION
	EXISTING HOT WATER CONVECTOR IDENTIFICATION
	EXISTING CEILING RADIATOR IDENTIFICATION
	EXISTING UNIT VENTILATOR IDENTIFICATION
	EXISTING UNIT VENTILATOR INTAKE IDENTIFICATION
	EXISTING SUPPLY AIR FAN IDENTIFICATION
	EXISTING UNIT HEATER IDENTIFICATION
	EXISTING EXHAUST FAN IDENTIFICATION
	TYPE 1 NEW FIN TUBE RADIATION IDENTIFICATION
	EXISTING FIN TUBE RADIATION IDENTIFICATION
	TO CONTROLLED FRESH AIR WALL MTD, (5'-2"± A.F.F.-U.O.N.) TEMPERATURE SENSOR
	DOOR UNDERCUT
	CEILING DIFFUSER
	CEILING REGISTER
	TOP WALL REGISTER
	CUBIC FEET PER MINUTE
	MOTORIZED CONTROL VALVE
	ABOVE FINISHED FLOOR
	OUTSIDE (FRESH) AIR INTAKE
	HEATING, VENTILATING, AIR CONDITIONING CONTRACTOR
	FLEXIBLE CONNECTION
	FULL SIZE CONNECTION
	ACCESS DOOR
	FIRE DAMPER
	POINT OF DISCONNECTION
	POINT OF CONNECTION, NEW TO EXISTING
	SECTION/DETAIL/ELEVATION/PART PLAN NUMBER
	DRAWING NUMBER
	SECTION/ELEVATION IDENTIFICATION

ISSUED FOR BID	09/22/2023
ISSUE	DATE



ED PROJECT NO.	66-08-01-06-0-005-025
MEMASI PROJECT NO.	107-2201

© 2022 MEMASI. ALL RIGHTS RESERVED.

BEFORE FABRICATION THIS CONTRACTOR SHALL
VERIFY ALL MEASUREMENTS AND CONDITIONS ON
JOB AND COORDINATE HIS WORK WITH THE WORK
OF ALL OTHER CONTRACTORS

WESTLAKE MIDDLE / HIGH
SCHOOL

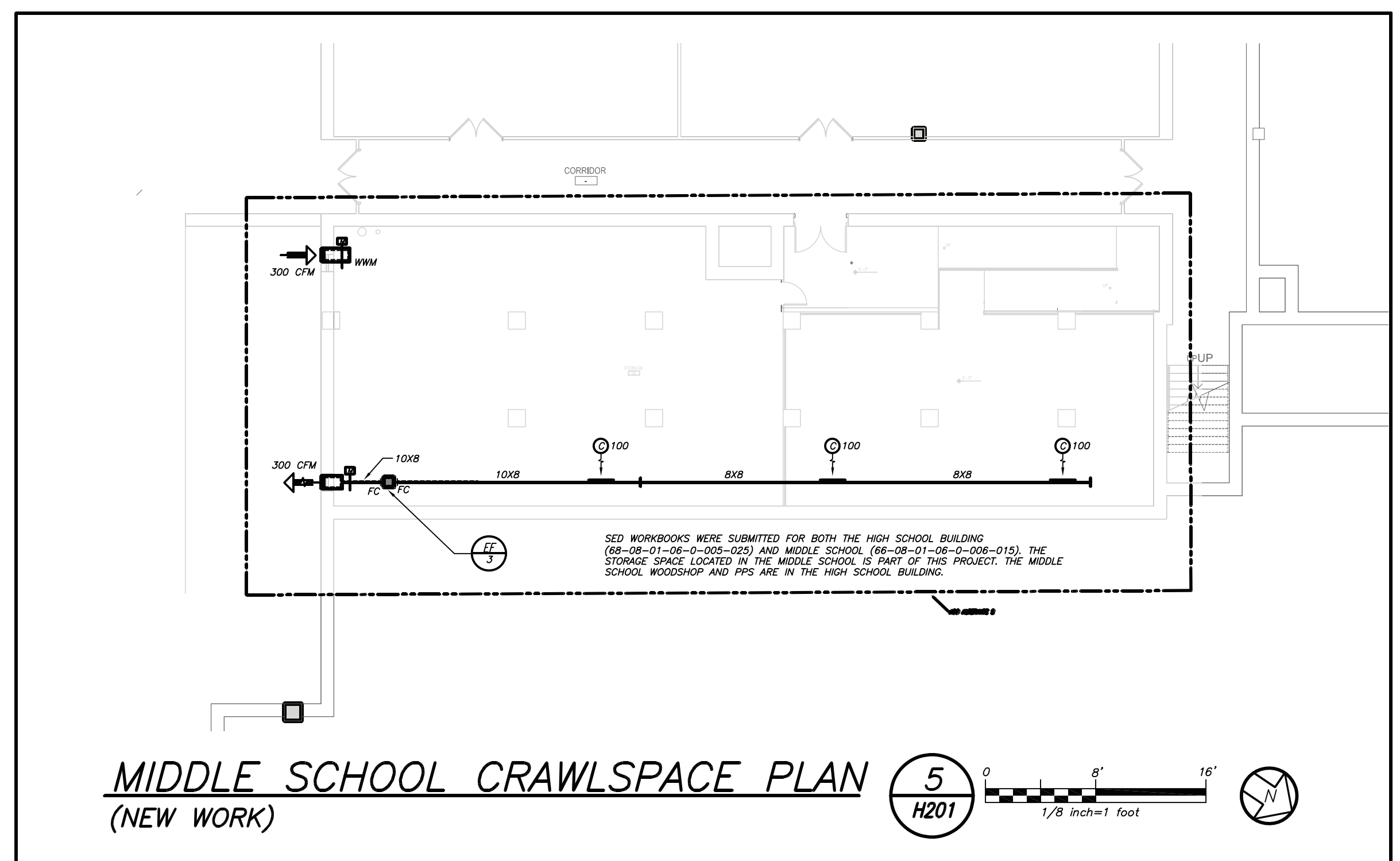
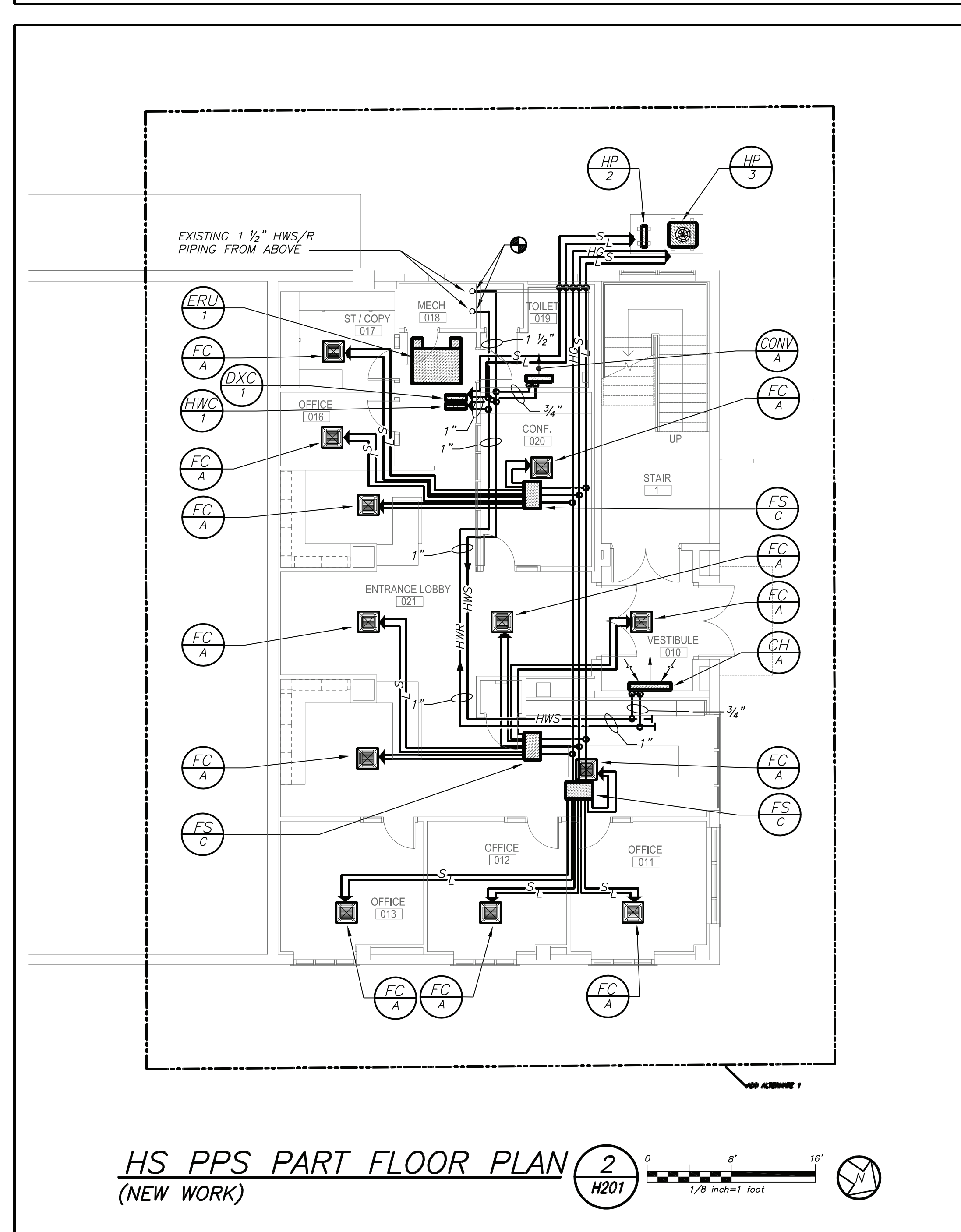
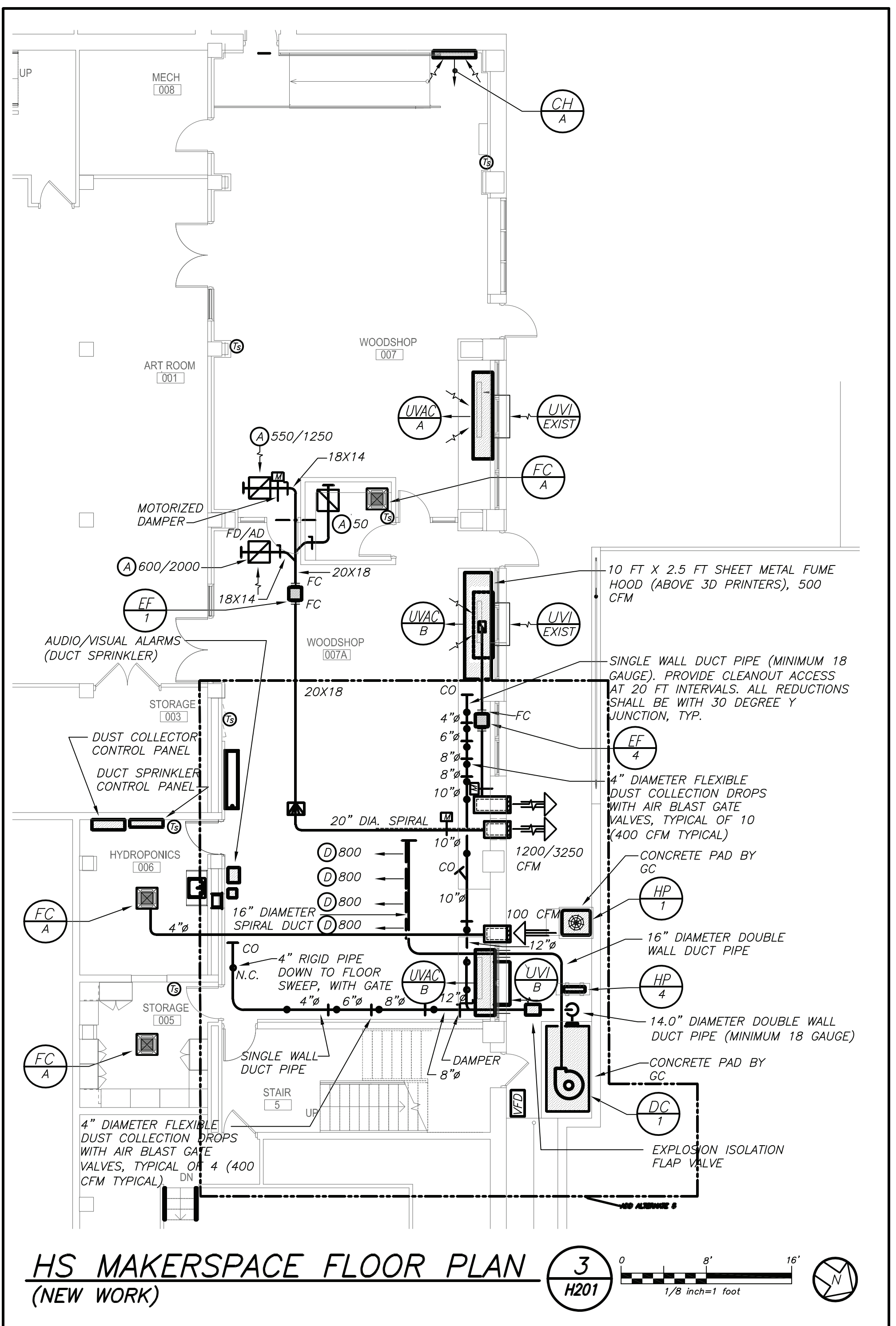
LYON PLACE
WHITE PLAINS, NY 10601
914.915.9519
MEMASIDESIGN.COM

THACA, NY 14850

MASSAPEQUA PARK, NY 11762

PLEASANTVILLE, NY 1057

ONE PENN PLAZA



THE CONTRACTOR SHALL PROVIDE ALL INDOOR AND OUTDOOR EQUIPMENT AS INDICATED IN THE DUST COLLECTOR SCHEDULE AND ASSOCIATED SCHEDULE NOTES, FOR A COMPLETE AND OPERABLE SYSTEM. COORDINATED WITH PC FOR DUCT SPRINKLER WATER SUPPLY REQUIREMENTS.

BEFORE FABRICATION THIS CONTRACTOR SHALL VERIFY ALL MEASUREMENTS AND CONDITIONS ON JOB AND COORDINATE HIS WORK WITH THE WORK OF ALL OTHER CONTRACTORS

F

MEMPHIS PROJECT NO. 107-220

FLOOD PLANS

FLOOR PLANS

8. NOTES

Q & NOTES

MAKESPACE

MAKERSPACE,

PPS

H301

H201

© 2022 MEMASI. ALL RIGHTS RESERVED.

WESTLAKE MIDDLE / HIGH
SCHOOL

MARK	SERVICE	LOCATION	MODEL No. ①	TYPE	CFM	EXT. S.P. IN H ₂ O	RPM	HP (WATTS)	ELECTRIC V/F/Hz	SIZE (IN)	WEIGHT (LBS.)	REMARKS
④	WOODSHOPS RELIEF AIR	WOODSHOP 007A	SQ-160VG	IN-LINE	1200/3250	0.5	1300	3/4	115/1/60	26Lx26Wx26H	160	REFER TO ② ③
④	PPS TOILET	PPS TOILET	CSP-A12S	IN-LINE	150	0.25	980	(23)	115/1/60	13Lx10Wx9H	16	REFER TO ② ③
④	MIDDLE SCHOOL STORAGE VENTILATION	STORAGE	CSP-AS10	IN-LINE	300	0.5	1070	(218)	115/1/60	18Lx14Wx14H	36	REFER TO ② ③
④	3D PRINTERS FUME EXHAUST HOOD	WOODSHOP 007A	CSP-A1300	IN-LINE	500	0.5	1300	(609)	115/1/60	24Lx14Wx14H	60	REFER TO ② ③

NOTES

① AS MANUFACTURED BY "GREENHECK".

② INSTALL PER MANUFACTURER'S RECOMMENDATIONS.

③ PROVIDE VIBRATION ISOLATORS, BACKDRAFT DAMPER, SPEED CONTROL, DISCONNECT SWITCH, AND NAMEPLATE IDENTIFYING FAN MARK, MODEL NO., CFM, RPM, HP, AND ELECTRICAL SERVICE.

④ PROVIDE VIBRATION ISOLATORS, BACKDRAFT DAMPER, VARI-GREEN SPEED CONTROL FOR 2-SPEED OPERATION, DISCONNECT SWITCH, AND NAMEPLATE IDENTIFYING FAN MARK, MODEL NO., CFM, RPM, HP, AND ELECTRICAL SERVICE.

		SCHEDULE OF UNIT VENTILATORS															
WEIGHT (LBS.)	REMARKS	MARK	MODEL No. ①	CFM	MIN. O.A. CFM	HEATING DATA ②		COOLING DATA ③		FILTER TYPE	MOTOR H.P.	ELEC. SERV.	MOTOR FLA	MOTOR MCA	MOTOR MSCP	PHYSICAL DATA DIMENSION / WEIGHT	REMARKS
						CAPACITY MBH	ROWS	TOTAL CAPACITY MBH	SENSIBLE CAPACITY MBH								
160	REFER TO ② ④																REFER TO ② ③ ④ ⑤
160	REFER TO ② ③	④ ⑤	MAUV1250	1250	600	95	5	48	35.5	THROWAWAY	1/2	208/1/60	3.3	4.1	15	86"x17"Dx30"H/970LBS	REFER TO ② ③ ④ ⑤
36	REFER TO ② ③	④ ⑤	MAUV1000	1000	300	66	4	32	23.7	THROWAWAY	1/3	208/1/60	2.6	3.2	15	74"x17"Dx30"H/460LBS	REFER TO ② ③ ④ ⑤
60	REFER TO ② ③																

NOTES

① AS MANUFACTURED BY "MAGICAIRE".

② BASED ON ENTERING/LEAVING WATER TEMPERATURES HW 180/150F.

③ BASED ON A.R.I. CERTIFIED COIL SELECTIONS; REFRIGERANT R-410A, VRF TYPE COIL.

④ INSTALL PER MANUFACTURER'S RECOMMENDATIONS

⑤ COORDINATE HVAC EQUIPMENT FAN SHUT DOWN BY FIRE ALARM PANEL WITH ELECTRICAL CONTRACTOR.

⑥ UNIT SHALL INCLUDE HW HEATING COIL, DX VRF TYPE DX COOLING COIL, INSULATED VALVE PACKAGE, WALL SLEEVE, EXTERIOR LOUVER (MODEL AEL-268-267-L, VERTICAL BLADES, FLANGED FRAME, LATTICE FACE) WITH BIRD SCREEN, DISCHARGE GRILLE WITH SCREEN, INSULATED OUTSIDE AIR DAMPER, FACE AND BYPASS DAMPER, ECM HIGH STATIC VARIABLE SPEED MOTOR, PIPE FALSE BACK, 2" MERV 13 FILTERS, DDC CONTROL PACKAGE, BACNET CONTROLLER, LH AND RH CONNECTIONS TO BE COORDINATED IN FIELD.

⑦ PROVIDE EEV KIT AND COMMUNICATION KIT FOR D/X COIL OPERATION WITH LG VRF SYSTEM.

SCHEDULE OF CABINET HEATERS										
MARK	TYPE UNIT	MODEL N ^o ①	CAPACITY DATA			PD.FT.	MOTOR WATTS	RPM	ELECTRIC SERVICE	REMARKS
			MHH	CFM	GPM					
②	WALL	W 1070 03	22.7	335	2.0	0.26	1/15	1050	120/1/60	③ ④ ⑤ ⑥

REEFS TO
 ③ ④ ⑤ ⑥

① AS MANUFACTURED BY "STERLING".
 ② INSTALL PER MANUFACTURER'S RECOMMENDATIONS.
 ③ CAPACITIES BASED ON LOW SPEED FAN SETTING, AND 170 A.W.T.
 ④ PROVIDE 2 ROW COIL, THROWAWAY FILTERS, INTEGRAL SPEED CONTROL, DISCONNECT SWITCH, REMOTE WALL SENSOR CONNECTED TO BMS, GASKET AND PERMA LAP FRAME. COORDINATE FINISH AND COLOR WITH ARCHITECT.
 ⑤ UNIT DIMENSIONS 36"x25"x9.5", WEIGHT 150 LBS.
 ⑥ PROVIDE WITH HOT WATER RETURN AQUASTAT. AQUASTAT SHALL NOT ALLOW FAN TO OPERATE AT WATER TEMPERATURE BELOW 98 DEGREES F.

SCHEDULE OF REGISTERS AND DIFFUSERS								
MARK	TYPE	SERVICE	MODEL No. ①	DIRECTION DISCHARGE	DAMPER TYPE	FINISH	TYPE	REMARKS
(A)	CEILING REGISTER	RETURN	535	—	OPPOSED BLADE	PER ARCH.	LAY IN	REFER TO ② ③ ④ ⑤
(B)	CEILING REGISTER	EXHAUST	635	—			LAY IN	REFER TO ② ③ ⑤ ⑥
(C)	CEILING DIFFUSER	SUPPLY	SCD	4-WAY			LAY IN	REFER TO ② ③ ④ ⑥
(D)	DUCT REGISTER	SUPPLY	96	DOUBLE DEFLECTION			SURFACE MOUNT	REFER TO ② ③ ④ ⑥

NOTES

① AS MANUFACTURED BY "PRICE".

② INSTALL PER MANUFACTURER'S RECOMMENDATIONS.

③ PROVIDE MOUNTING FRAME COMPATIBLE W/ MOUNTING SURFACE. COORDINATE ALL BORDER TYPES, COLORS, FINISHES AND DIMENSIONS WITH ARCHITECT.

④ STEEL CONSTRUCTION.

⑤ ALUMINUM CONSTRUCTION.

⑥ RETURN NECK SIZE PER CFM RANGE (NOT TO EXCEED 875 fpm)

50	150	250	400	600	800	1100	1200
19	79	107	170	260	340	470	512
149	249	339	559	799	1099	1199	2399
6x6	8x8	10x10	12x12	14x14	16x16	18x18	24x24

SCHEDULE OF ENERGY RECOVERY UNITS																										
GENERAL DATA					SUPPLY FAN DATA			RETURN-EXH. FAN DATA			ELECTRICAL DATA		HEAT EXCHANGER		HOT WATER HEATING COIL DATA ①					FILTER	PHYSICAL DATA	REMARKS				
MARK	SERVICE	LOCATION	OAI	MODEL No. ①	CFM	MOTOR HP	E.S.P. IN WG	CFM	MOTOR HP	E.S.P. IN WG	MCA	MOP	ELECTRICAL SERVICE	MODEL	THERMAL EFFICIENCY (%)	MARK	CAPACITY MBH	TOTAL MBH	E.A.T. °F	L.A.T. °F	GPM				TYPE	LxHxW(in.)/WEIGHT(lbs)
ERV-1	PPS RENOVATION	PPS CEILING	640	U-ERV-600	640	—	1.0	550	—	0.75	8.3	15	208/1/60	HEAT WHEEL	75	ERV-1	—	—	—	—	—	2" MERV 13	57x12x69/96	REFER TO ②③④⑤⑥		

NOTES

① AS MANUFACTURED BY "ENERGYWALL" (KLIMA NEW YORK 914 255-4390)

② INSTALL PER MANUFACTURER'S RECOMMENDATIONS.

③ DUCT MOUNTED COIL BASED ON ENTERING/LEAVING WATER TEMPERATURES HW 180/160°

④ PROVIDE UNIT WITH MERV 13 FILTERS, DX VRF COOLING/HEATING COIL WITH DRAIN PAN, ECM MOTORS, 100% ECONOMIZER, DRY CONTACTS FOR DIRTY FILTER INDICATOR, FROST CONTROL, PHASE PROTECTION, DISCONNECT SWITCH, AND MOTORIZED DAMPERS FOR OA, EA.

⑤ PROVIDE EEV KIT AND COMMUNICATION KIT FOR D/X COIL OPERATION WITH LG VRF SYSTEM.

⑥ INDICATED EQUIPMENT DESIGNATIONS ARE FOR USE IN CONSTRUCTION ONLY. CONTRACTOR SHALL COORDINATE WITH OWNER ON DESIRED FINAL TAG IDENTIFICATION/NUMBERING/LETTERING. OWNER APPROVED DESIGNATIONS SHALL BE USED IN BMS PROGRAMMING AND ON PERMANENT EQUIPMENT IDENTIFICATION TAGS. AS-BUILT DRAWINGS SHALL BE UPDATED WITH FINAL IDENTIFICATION TAG DESIGNATIONS.

SCHEDULE OF DUCT MOUNTED HOT WATER HEATING COILS												
MARK	SERVICE	Htg. CAPACITY BTU/Hr.	EAT. (°F)	LAT. (°F)	ENT. (°F)	LWT. (°F)	GPM	CFM	COIL FACE AREA SQU.	COIL FACE VELOCITY FPM	ROWS	REMARKS
①	②	55,300	10	90	180	160	4.8	640	-	500	-	REFER TO ③④⑤⑥⑦⑧

NOTES

①AS MANUFACTURED BY "NATIONWIDE COILS INC."

②AIR PRESSURE DROP ACROSS COIL SHALL NOT EXCEED 0.30" S.P.

③INSTALL PER MANUFACTURER'S RECOMMENDATIONS.

④COIL SHALL BE MINIMUM 2 ROWS WITH MINIMUM OF 8 FINS PER INCH.

⑤5/8" TUBE AND ALUMINUM FINS.

⑥GALVANIZED PITCHED CASING.

⑦THE WATER COIL IS SIZED TO HANDLE OUTDOOR AIR QUANTITIES AT 100 PERCENT (WATER RECOVERY UNIT IN OPERATION) OF OCCUPANCY WITHOUT HAVING TO RESORT TO CLOSING OUTDOOR AIR INTAKE DAMPERS ON A "DESIGN HEATING DAY" TO PREVENT FREEZE-UP.

MARK	MODEL No. ①	CAPACITY DATA (BTU/HR)			MCA	ELECTRIC SERVICE	PHYSICAL DATA		REMARKS
		UNIT	PORTS	EACH PORT			LxWxH (IN)	WEIGHT (LBS)	
②	PRHR023A	120,000	2	60,000	0.17	208/1/60	19X19X9	35	REFER TO ②③④
③	PRHR033A	180,000	3	60,000	0.17	208/1/60	19X19X9	38	REFER TO ②③④
④	PRHR043A	230,000	4	60,000	0.17	208/1/60	19X19X9	40	REFER TO ②③④

NOTES

- ① AS MANUFACTURED BY "L.G." (KLIMA NEW YORK 914 255-4390)
- ② INSTALL PER MANUFACTURER'S RECOMMENDATIONS.
- ③ REFRIGERANT R-410A.
- ④ PROVIDE MOUNTING HARDWARE. MOUNT UNIT HORIZONTALLY.

SCHEDULE OF DUCT MOUNTED D/X COILS

MARK	SERVICE	DLS CAPACITY BTU/Hr.	MHS CAPACITY BTU/Hr.	EAT. (T/F)	LAT. (T/F)	CFM	COIL FACE AREA SQ. FT.	COIL FACE VELOCITY FPM	ROWS	REMARKS
AHU	EW	22,600	27,000	90	58	640	-	400	-	REFER TO ①②③④⑤

NOTES:

- ① AS MANUFACTURED BY "NATIONWIDE COILS INC."
- ② INSTALL PER MANUFACTURER'S RECOMMENDATIONS.
- ③ BASED ON A.R.I. CERTIFIED COIL SELECTIONS, REFERENCE R-410.
- ④ PROVIDE DUCT MOUNTED CASED DX COOLING/HEATING COIL SECTION SUPPORTED FROM STRUCTURE ABOVE. MOUNTING HARDWARE, ACCESS DOORS ON BOTH SIDES OF COIL, ASSOCIATED PIPING, CONTROLS AND APPURTENANCES.
- ⑤ PROVIDE EHV KIT AND COMMUNICATION KIT FOR D/X COIL OPERATION WITH LG VRF SYSTEM. KITS SHALL BE FIELD INSTALLED. AHU KIT REQUIRES 208/1/60 POWER.

SCHEDULE OF DUST COLLECTOR

MARK	SERVICE	LOCATION	MODEL No. ①	TYPE	CFM	EXT. S.P. IN H ₂ O	RPM	HP	ELECTRIC V/FH/HZ	SIZE (IN)	WEIGHT (LBS.)	REMARKS
PC ⑦	WOODSHOP	EXTERIOR	NFPZ3000-2LE	BAG FILTER	3200	2.3	1800	10.0	208/3/60	44x94Wx16BH	3000	REFER TO ② ③

NOTES:

①

AS MANUFACTURED BY "NEDERMAN LLC CONFIGURED SOLUTIONS". (704 999-0774)

②

INSTALL PER MANUFACTURER'S RECOMMENDATIONS.

③

PROVIDE CONTROL PANEL, VFD SPEED CONTROL, INVERTER DUTY MOTOR, DISCONNECT SWITCH, 16 GAUGE WELDED STEEL SEPARATOR, DISCHARGE AIR SILENCER, ANGLE IRON FRAME STAND, STEEL DUST BINS, HIGH EFFICIENCY POLYESTER BAG FILTERS 99.9% EFFICIENT, ENAMEL COAT FINISH, WEATHER RESISTANT CONSTRUCTION, NFPA COMPLIANT, EXPLOSION ISOLATION FLAP DAMPER, BAG SHAKER MECHANISM, EXPLOSION DOORS, FAN SILENCER, VFD UNIT CATWK/GANGWAY, LADDER, SPRINKLER PIPE, DUCT SPARK DETECTION SYSTEM INCLUDES CONTROL PANEL, ALARM HORN/SSTROBE LIGHT, DUCT SPARK DETECTORS, DUCT SPARK DETECTORS INSTALLATION KIT, EXTINGUISHING SETS (FURNISH TO PC FOR INSTALLATION IN WATER SUPPLY), DUCT EXTINGUISHING CONTROL

PANEL, ZONE CONTROL UNITS, ZONE CONTROL UNIT WRING,BASES, ZONE CONTROL UNIT MOUNTING BRACKETS, CABLE FOR SOLENOID VALVES AND FLOW MONITORS, CABLE FOR SPARK DETECTORS AND TEST LIGHTS, AV SYSTEM COMMISSIONING, PROVIDE SYSTEM COMMISSIONING, NAMEPLATE IDENTIFYING FAN MARK, MODEL NO., CFM, RPM, HP, AND ELECTRICAL SERVICE.

~~ADD ALTERNATE 5~~

H301

DBE: TAB: Layout1 - Y:\MT PLEASANT CSD\Mt. Pleasant CSD - MS -Maker Space Renovation (2235.00)\Drawings\HVAC\XF223500-H301 MECHANICAL.dwg - DATE: Sep 20, 2023 - 3:42pm

HAZARDOUS MATERIALS CONSULTANT
WSP
ONE PENN PLAZA
150 W 34TH ST., 4TH FLOOR
NEW YORK, NY 10119