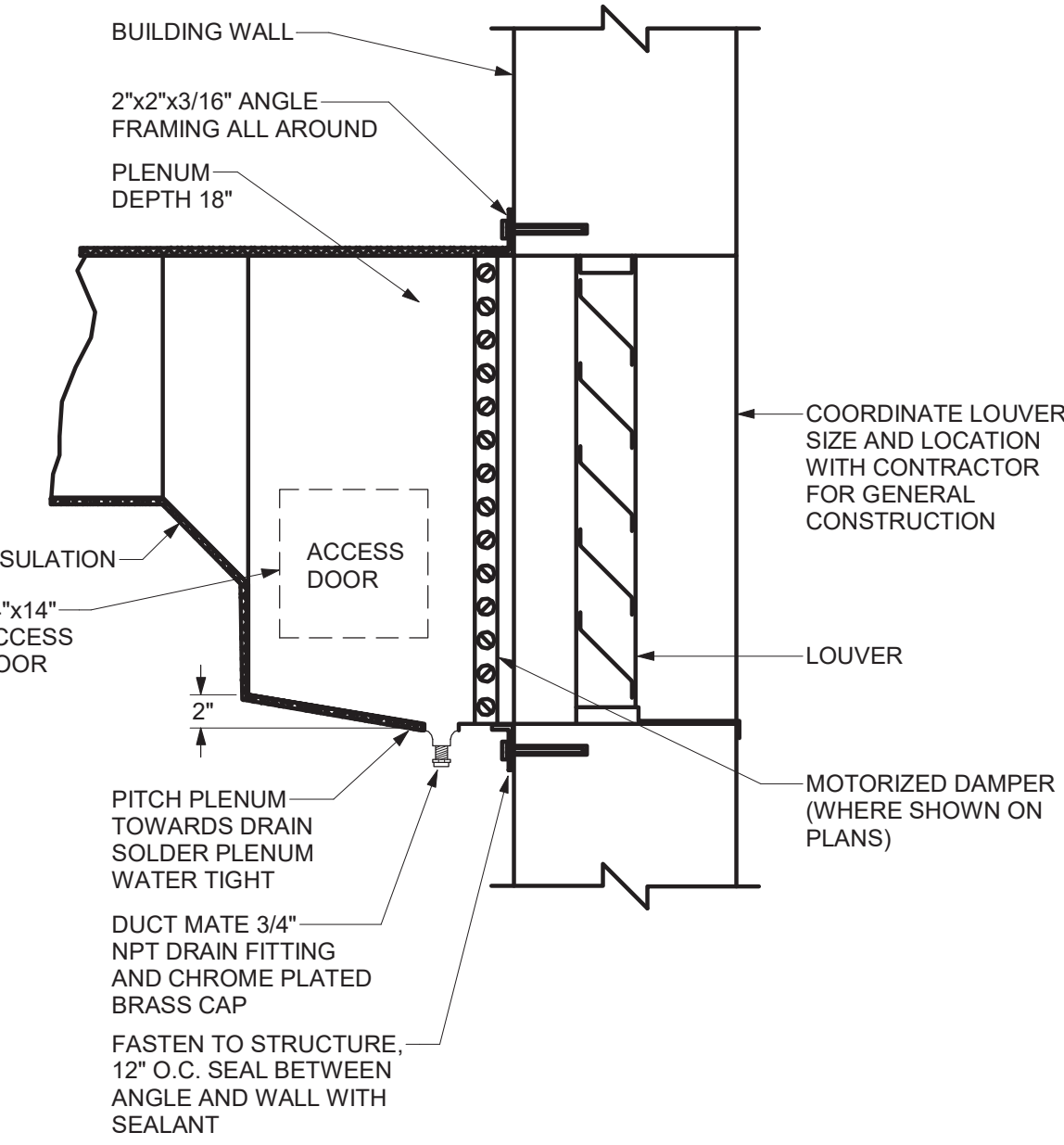
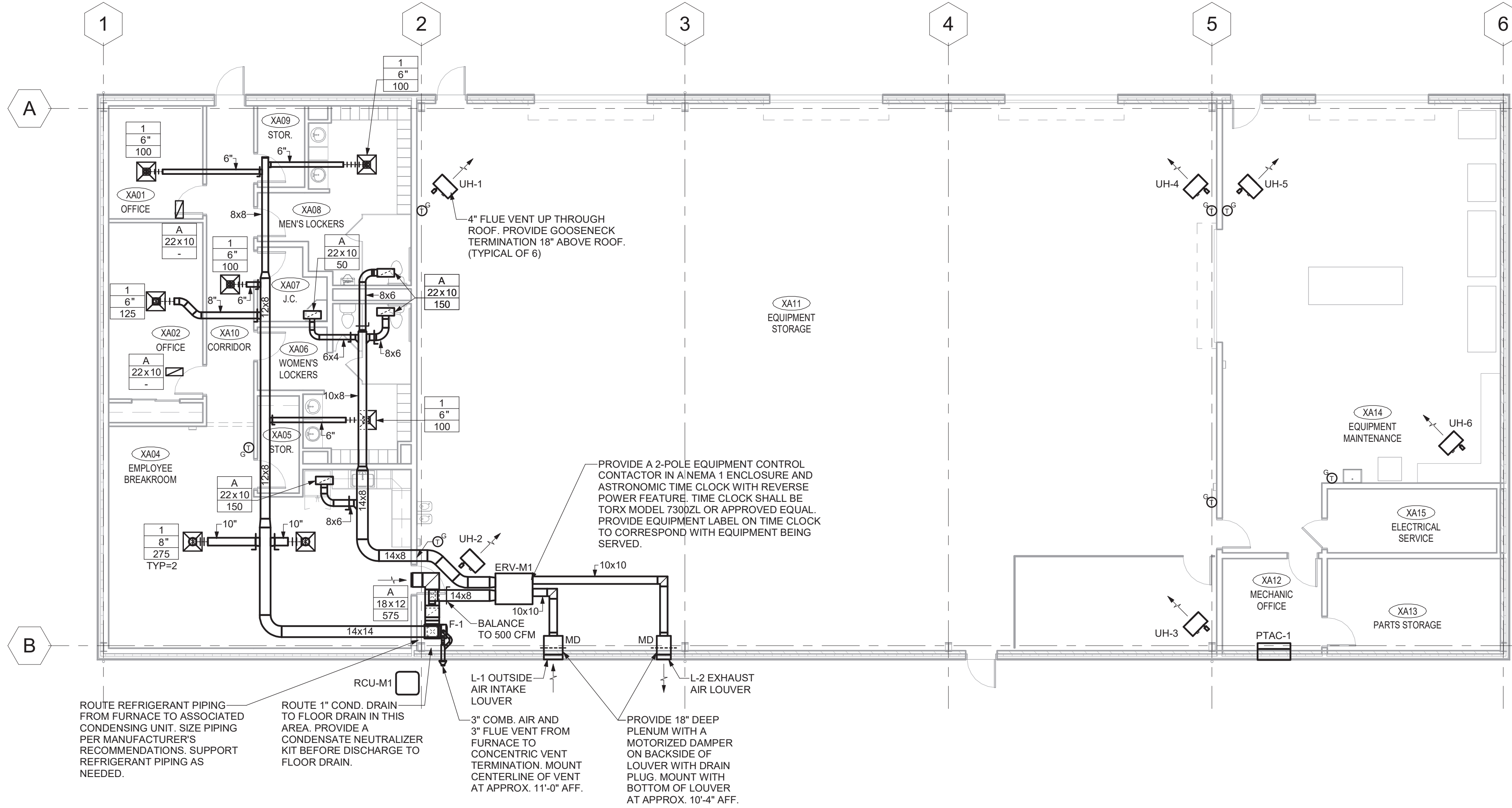




REVISIONS:	
1	
2	
3	
4	
5	
6	
7	
8	
9	
10	
11	
12	
13	
14	
15	
16	
17	
18	
19	
20	



1 MAINTENANCE BUILDING - FIRST FLOOR PLAN - HVAC
1/8" = 1'-0"

FURNACE SCHEDULE - DX/GAS(LP)																	
UNIT NO.	LOCATION	CFM	EXT. STATIC (in. WC)	TYPE	AIRFLOW CONFIGURATION	TOTAL COOLING CAPACITY (TONS)	GAS FURNACE				MOTOR				MANUFACTURER & MODEL No.	REMARKS	
							INPUT CAPACITY (MBH)	OUTPUT CAPACITY (MBH)	EFFICIENCY MINIMUM (%)	TEST PROCEDURE	RPM	HP	VOLTS	PHASE			FLA
F-1	EQUIPMENT STORAGE	1,075	0.90	CONDENSING	UPFLOW	3.0	60.0	58.2	96.0	ANSI Z21.47	VARIES	0.75	120	1	8.0	TRANE MODEL S9V2B060/4PXCBU36B	1

REMARKS:
1. AIRFLOW BASED ON MEDIUM FAN SPEED IN THE 2ND STAGE OF HEATING.

REGISTER GRILLE AND DIFFUSER SCHEDULE					
TYPE	APPLICATION	MATERIAL	FINISH	MANUFACTURER & MODEL NO.	REMARKS
1	SUPPLY	STEEL	COLOR AS SELECTED BY ARCHITECT	PRICE MODEL SPD	-
A	RETURN/EXHAUST	STEEL	COLOR AS SELECTED BY ARCHITECT	PRICE MODEL S35D	-

AIR COOLED CONDENSING UNIT SCHEDULE																										
UNIT NO.	LOCATION	SERVES	CAPACITY TONS	COMPRESSORS				REFRIGERANT	AMBIENT AIR TEMP (DEG. F)	COILS ROWS	FIN SPACING (FIN/IN.)	TOTAL FACE AREA (SQ. FT.)	FANS				MOTOR HP	PERFORMANCE		TEST PROCEDURE	ELEC CHARACTERISTICS				MANUFACTURER & MODEL No.	REMARKS
				NO. OF COMP.	CAPACITY STEPS	RLA	LRA						NO. OF FANS	DIA. (IN.)	SPEED (RPM)	TOTAL AIRFLOW (CFM)		MINIMUM EFFICIENCY SEER	VOLTS		PHASE	MCA	MOP			
RCU-M1	AT GRADE	OFFICE AREA	3.0	1	1	5.8	38.0	R-410A	95.0	1	24	18.75	1	23.0	825	2,805	0.125	14.0	AHRI 270	208	3	12.0	20.0	TRANE MODEL 4TTA4036A3000A	-	

UNIT HEATER SCHEDULE - GAS(LP)																			
UNIT NO.	LOCATION	TYPE	AIR SIDE			GAS		MIN. GAS PRESS BEFORE REGULATOR (In. WC)		EFFICIENCY	TEST PROCEDURE		FAN MOTOR		MOUNTING HEIGHT (Ft.-In.)		THROW (Ft.)	MANUFACTURER & MODEL No.	REMARKS
			AIR FLOW (CFM)	ENT AIR TEMP (DEG. F)	LVG AIR TEMP (DEG. F)	INPUT CAPACITY (BTU/H)	OUTPUT CAPACITY (BTU/H)		MIN (%)			RPM	HP	VOLTS	PHASE				
UH-1	EQUIPMENT STORAGE	HORIZONTAL	990	70.0	115.0	60,000	49,200	11.0	82.0	ANSI Z83.8	1,550	0.066	115	1	9.0	36.0		MODINE MODEL HD60	-
UH-2	EQUIPMENT STORAGE	HORIZONTAL	990	70.0	115.0	60,000	49,200	11.0	82.0	ANSI Z83.8	1,500	0.066	115	1	9.0	36.0		MODINE MODEL HD60	-
UH-3	EQUIPMENT STORAGE	HORIZONTAL	990	70.0	115.0	60,000	49,200	11.0	82.0	ANSI Z83.8	1,500	0.066	115	1	9.0	36.0		MODINE MODEL HD60	-
UH-4	EQUIPMENT STORAGE	HORIZONTAL	990	70.0	115.0	60,000	49,200	11.0	82.0	ANSI Z83.8	1,500	0.066	115	1	9.0	36.0		MODINE MODEL HD60	-
UH-5	EQUIPMENT MAINTENANCE	HORIZONTAL	990	70.0	115.0	60,000	49,200	11.0	82.0	ANSI Z83.8	1,500	0.066	115	1	9.0	36.0		MODINE MODEL HD60	-
UH-6	EQUIPMENT MAINTENANCE	HORIZONTAL	990	70.0	115.0	60,000	49,200	11.0	82.0	ANSI Z83.8	1,500	0.066	115	1	9.0	36.0		MODINE MODEL HD60	-

LOUVER SCHEDULE													
UNIT NO.	LOCATION	SERVICE	TYPE	FINISH	FREE AREA (SQ. FT.)	DIMENSIONS (APPROX.) WIDTH (IN.)	HEIGHT (IN.)	DEPTH (IN.)	AIR PERFORMANCE AIR FLOW (CFM)	VEL (FPM)	MAX P.D. (IN. WC)	MANUFACTURER & MODEL NO.	REMARKS
L-1	EQUIPMENT STORAGE XA11	ERV-M1	FIXED LOUVER	POWDER COAT	1.06	24	16	4	500	453	0.04	GREENHECK MODEL ESD-403	1, 2
L-2	EQUIPMENT STORAGE XA11	ERV-M1	FIXED LOUVER	POWDER COAT	1.06	24	16	4	500	453	0.04	GREENHECK MODEL ESD-403	1, 2

REMARKS:
1. INSECT SCREEN.
2. FINISH COLOR TO BE SELECTED BY ARCHITECT.

PACKAGED TERMINAL AIR CONDITIONING UNIT SCHEDULE - AIR COOLED DX/ELECTRIC																	
UNIT NO.	LOCATION	SERVICE	COOLING CAPACITY			HEATING COIL			ELEC CHARACTERISTICS				EFFICIENCY	TEST PROCEDURE	MANUFACTURER & MODEL No.	REMARKS	
			AIR FLOW (CFM)	O.A.M (CFM)	COOLING CAP. TOTAL (MBH)	OUTDOOR COIL EAT (DEG. F)	TYPE	CAPACITY (MBH)	NO OF STEPS	VOLTS	PHASE	MCA					MOP
PTAC-1	MECHANIC OFFICE	MECHANIC OFFICE	370	35	11.4	95.0	OPEN COIL	6.8	1	208	1	14.1	15.0	11.0	AHRI 310/380	AMANA MODEL PTH123G25A	1, 2

REMARKS:
1. PROVIDE 2.5 KW AUXILIARY ELECTRIC HEATER.
2. PROVIDE SUB-BASE KIT.

PACKAGED ENERGY RECOVERY VENTILATION UNIT SCHEDULE - STATIC PLATE CORE HEAT EXCHANGER																										
UNIT NO.	LOCATION	SERVICE	MODE	SUPPLY FAN		EXHAUST FAN		ELECTRICAL CHARACTERISTICS						TOTAL EFF. (%)	PERFORMANCE CONDITIONS (DEG. F)								MANUFACTURER & MODEL No.	REMARKS		
				AIR FLOW (CFM)	E.S.P. (In. WC)	T.S.P. (In. WC)	HP	AIR FLOW (CFM)	E.S.P. (In. WC)	T.S.P. (In. WC)	HP	VOLTS	PHASE		MCA	MOP	O.A.		R.A.		S.A.				E.A.	
																	D	WB	D	WB	D	WB			D	WB
ERV-M1	EQUIPMENT STORAGE XA11	OFFICE AREA	SUMMER	500	0.75	0.78	0.50	500	0.75	0.78	0.50	208	1	8.5	15.0	53.9	86.5	74.8	75.0	62.4	78.4	68.5	83.0	69.8	GREENHECK MODEL MINICORE-10-VG-FM	-
			WINTER													65.8	2.7	1.0	70.0	54.2	48.1	38.9	23.5	62.9		