

STRUCTURAL LEGEND

- INDICATES FOUNDATION TYPE MARK, REFERENCE THE FOUNDATION SCHEDULE.
- INDICATES FLOOR/ROOF STEP.
- INDICATES TOP FOUNDATION WALL STEP.
- INDICATES TOP FOOTING STEP.
- INDICATES NEW STRUCTURAL 8" CMU WALL. SIZE TYPICAL UNLESS NOTED OTHERWISE PER PLAN AND/OR ELEVATION
- INDICATES NEW NON-STRUCTURAL 8" CMU WALL BELOW. SIZE TYPICAL UNLESS NOTED OTHERWISE.
- INDICATES KEYED NOTE.
- INDICATES NEW WALL, REF WALL SCHEDULE.
- INDICATES NEW GRIDLINE

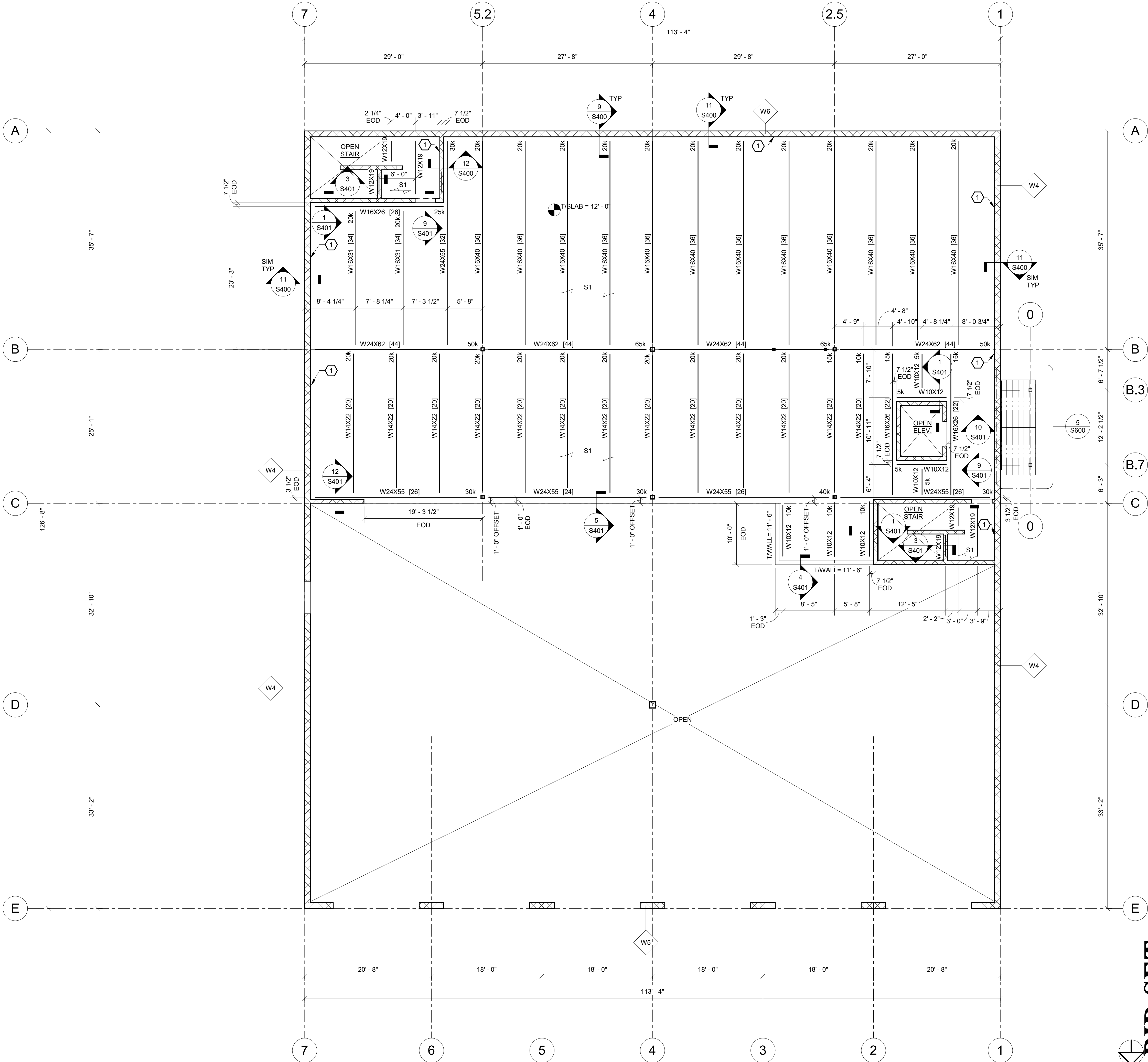
FRAMING PLAN NOTES

- ALL ELEVATIONS ARE REFERENCED FROM 0'-0" = 192.50'.
- VERIFY ALL DIMENSIONS WITH THE ARCHITECTURAL DRAWINGS. GRIDLINES ARE LOCATED AT OUTSIDE FACE OF CONCRETE MASONRY WALLS AND/OR COLUMN CENTERLINE.
- DETAILS ON THESE PLANS ARE INTENDED TO DEPICT THE GENERAL CONSTRUCTION METHODS FOR THIS STRUCTURE. CONNECTIONS, DETAILS AND CONDITIONS NOT SPECIFICALLY SHOWN THAT ARE SIMILAR TO THOSE THAT ARE SPECIFIED SHALL BE ASSUMED ONE AND THE SAME. IF QUESTIONS REGARDING THE APPLICATION OF DETAILS ARE ENCOUNTERED, NOTIFY THE ARCHITECT / ENGINEER FOR CLARIFICATION IN A TIMELY MANNER PRIOR TO BID OPENING.
- REFERENCE MEP DRAWINGS FOR ALL ELEVATIONS, PIPE PENETRATIONS, ETC. REFER TO STRUCTURAL DETAILS CORRESPONDING TO SPECIFIC ITEMS SUCH AS PIPE PENETRATIONS, OPENINGS, ETC.
- REFERENCE ARCHITECTURAL DRAWINGS FOR ADDITIONAL INFORMATION FOR ALL WINDOWS AND DOORS.
- TOP OF SLAB ELEVATION IS 12' - 0" UNLESS OTHERWISE NOTED.
- TOP OF STEEL ELEVATION IS 11' - 6" UNLESS OTHERWISE NOTED.
- INDICATES SPAN DIRECTION OF 6" STEEL DECK SLAB: 4" NORMAL WEIGHT CONCRETE OVER 2" 18 GAGE, GALVANIZED (G60) COMPOSITE STEEL DECK. REINFORCE WITH 6x6-W2.9xW2.9 WELDED WIRE REINFORCEMENT.
- FASTEN STEEL FLOOR DECK TO STEEL SUPPORTS IN THE FIELD WITH HILTI X-HSN-24 IN A 36/4 PATTERN AND HILTI S-SLC 01M HWH SIDE LAP FASTENERS @ 36" OC.
- BEAMS ARE EQUALLY SPACED BETWEEN COLUMN LINES UNLESS OTHERWISE NOTED.
- REFERENCE 13/S500 & 14/S500 FOR FRAMING AROUND OPENINGS IN COMPOSITE SLABS.
- ALL MASONRY (CMU) WALLS TO BE 8" THICK, NORMAL WEIGHT, W/ #6 VERTICAL BARS AT 48" OC MIN, UNLESS OTHERWISE NOTED ON PLAN
- PROVIDE ML-1 MASONRY LINTEL AT ALL OPENINGS IN INTERIOR NON LOAD-BEARING WALLS (8" WIDE x 16" DEEP W/ (1) #5 BAR BOTTOM OF LINTEL).

KEYNOTES

- 1 L5x3x3/8 (LLV), TYPICAL; PER 11/S400

WALL SCHEDULE				
MARK	WIDTH	VERT. REINF.	HORIZ. REINF.	MATERIAL
W1	20"	#5@12" OC, EF	#5@12" OC, EF	CONCRETE
W2	16"	#5@12" OC, EF	#5@12" OC, EF	CONCRETE
W3	8"	#5@12" OC, CTR	#5@12" OC, CTR	CONCRETE
W4	12"	#5@48" OC, EF	W1.7@16" OC	CMU
W5	12"	#5@16" OC, EF	W1.7@16" OC	CMU
W6	12"	#5@8" OC, EF	W1.7@16" OC	CMU
W7	12"	#5@12" OC, EF	#5@12" OC, EF	CONCRETE



1 SECOND FLOOR FRAMING PLAN  
S102 1/8" = 1'-0"

BID SET

DATE: 06.19.2023  
DRAWN BY: ENK  
SCALE: As Indicated  
REVIEWED BY: CAM  
PROJECT NO.: 21-2343  
FILE:



REVISIONS	
NO.	DESCRIPTION

PORT EWEN FIRE HOUSE  
PORT EWEN  
FIRE DEPARTMENT  
ULSTER, NEW YORK

SECOND FLOOR FRAMING PLAN

SHEET:  
S102

WARNING - IT IS A VIOLATION OF NEW YORK EDUCATION LAW SECTION 7209.2 FOR ANY PERSON, UNLESS HE IS ACTING UNDER THE DIRECTION OF A LICENSED PROFESSIONAL ENGINEER OR LAND SURVEYOR, TO ALTER THIS DOCUMENT IN ANY WAY. IF ALTERED, THE ALTERING PERSON SHALL COMPLY WITH THE REQUIREMENTS OF NEW YORK EDUCATION LAW, SECTION 7209.2.