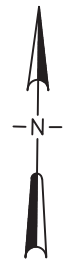


Station	Label	Type	Notes
5+85	UHA1	4 in. #49A/304 Dual Body Combo	Air Relief Manhole
12+50	UHC1	Cleanout	Existing Manhole
27+65	UHA2	2 in. #302A Air/Vacuum	Existing Manghole
42+75	UHC2	Cleanout	Existing Manhole
51+65	UHA3	3 in. #303A Air/Vacuum	Existing Manhole, formerly UHA2
59+30	UHC3	Cleanout	Existing Manhole
69+75	UHC4	Cleanout	Existing Manhole
79+55	UHA4	4 in. #304 Air/Vacuum	Existing Manhole, formerly UHA3
89+80	UHA5	4 in. #49A/304 Dual Body Combo	Existing Manhole

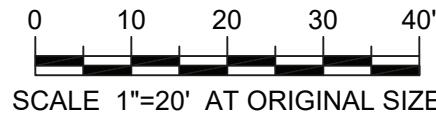
AIR RELEASE/CLEANOUT MH LOCATION AND TEMPORARY BYPASS PIPE PLAN
NOT TO SCALE

LEGEND
--- NORFOLK SOUTHERN
..... METRO NORTH



NOTES:

1. INFORMATION FOUND ON THIS DRAWING HAS BEEN DERIVED FROM THE LATEST AVAILABLE INFORMATION. CONTRACTOR IS RESPONSIBLE FOR VERIFYING INFORMATION IN THE FIELD. IF ANY DISCREPANCIES ARISE FROM THESE FILED INVESTIGATIONS, CONTRACTOR SHALL NOTIFY ENGINEER/OWNER.



©2021 Environmental Design & Research, Landscape Architecture, Engineering, & Environmental Services, D.P.C.
The following is paraphrased from the New York Education Law, Article 145, Section 7209, and Chapter II, Section 79-14, and applies to this drawing: "It is a violation of this law for any person unless he is acting under the direction of a licensed professional engineer, licensed landscape architect or licensed land surveyor to alter an item in any way. If an item bearing the seal of an engineer, landscape architect or land surveyor is altered, the altering engineer, landscape architect or land surveyor shall affix to the item his seal and the notation "altered by" followed by his signature and the date of such alteration and a specific description of the alteration."



EDR
a better environment

**Environmental
Design & Research,**
Landscape Architecture, Engineering
& Environmental Services, D.P.C.
217 Montgomery Street, Suite 1100
Syracuse, New York 13202
P. 315.471.0688

PROJECT TITLE: **UNION HILL AND TALLMAN
PUMP STATION UPGRADE**

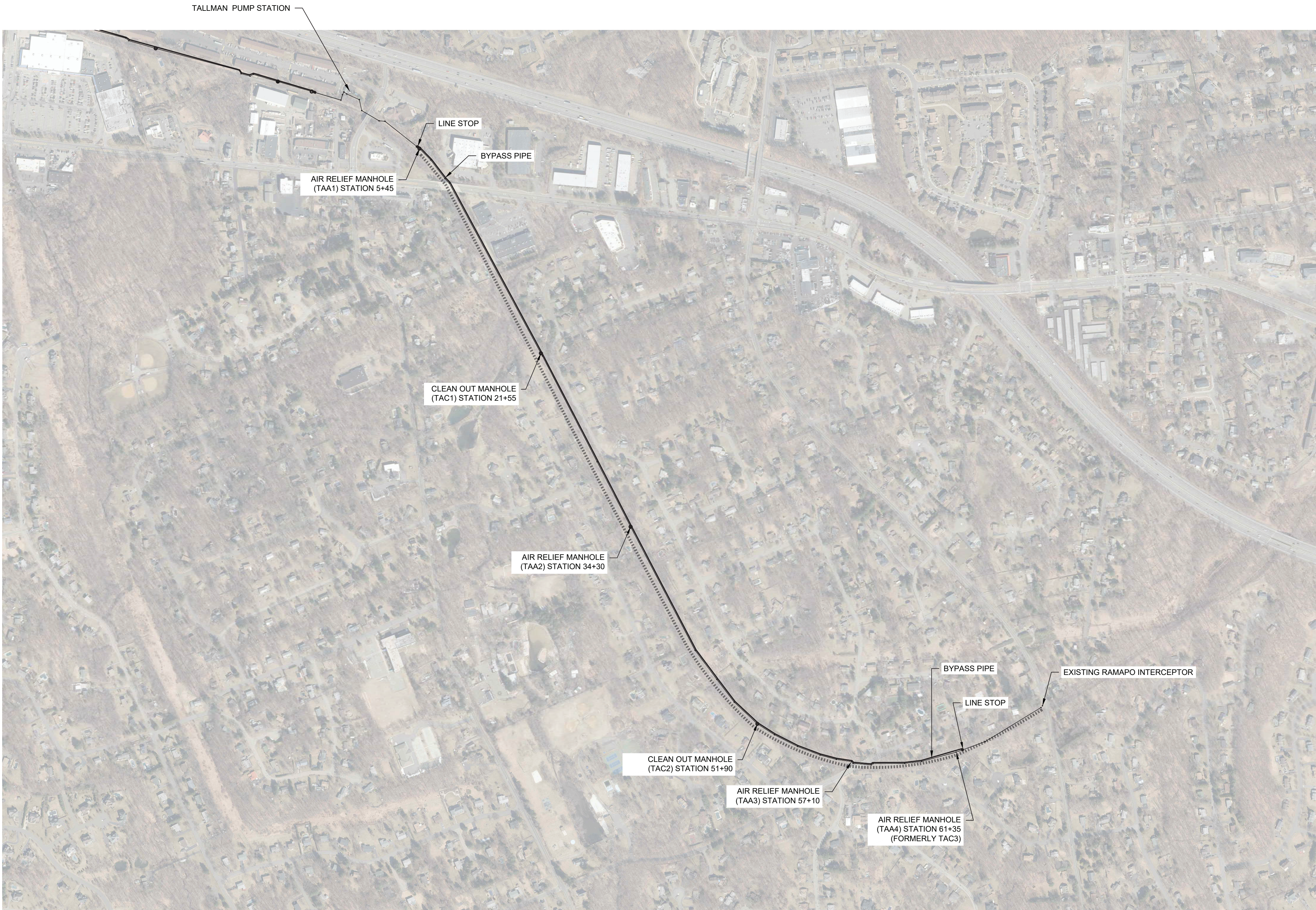
PROJECT LOCATION: **ROCKLAND COUNTY, NEW YORK**

CLIENT: **ROCKLAND COUNTY SEWER DISTRICT No 1**

DRAWING TITLE: **UNION HILL FORCEMAIN AIR RELEASE AND CLEANOUT MANHOLE
LOCATION PLAN**

CONTRACT
1

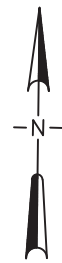
DRAWINGS ISSUED FOR / REVISIONS						EDR JOB# 21213	
NO.	DATE	ISSUED FOR / REVISION	BY	CHK	APP	DATE: 06/2023	
7	06/23	ADDENDUM 4	LRO	RRS	MET	SCALE: 1"=20'-0"	
2	07/22	90 PERCENT DESIGN REVIEW	MJL	RRS	MET	DRAWN BY: MJL	
3	09/22	FOR REGULATORY REVIEW	MJL	RRS	MET	CHECKED BY: RRS	
4	01/23	100 PERCENT DESIGN REVIEW	MJL	RRS	MET	DRAWING NUMBER:	
5	03/23	100 PERCENT DESIGN REVIEW	MJL	RRS	MET	C-102	
6	06/23	FOR BID	MJL	RRS	MET		



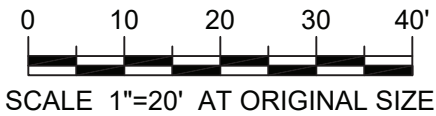
Station	Label	Type	Notes
5+45	TAA1	2 in. #302A Air/Vacuum	Existing Manhole
21+55	TAC1	Cleanout	Existing Manhole
34+30	TAA2	4 in. #49A/304 Dual Body Combo	Existing Manhole
51+90	TAC2	Cleanout	Existing Manhole
57+10	TAA3	3 in. #303A Air/Vacuum	Existing Manhole
61+35	TAA4	4 in. #49A/304 Dual Body Combo	Existing Manhole, formerly TAC3

AIR RELEASE/CLEANOUT MH LOCATION AND BYPASS PIPE PLAN
NOT TO SCALE

LEGEND
- - - - - NORFOLK SOUTHERN
..... METRO NORTH



- NOTES:
1. INFORMATION FOUND ON THIS DRAWING HAS BEEN DERIVED FROM THE LATEST AVAILABLE INFORMATION. CONTRACTOR IS RESPONSIBLE FOR VERIFYING INFORMATION IN THE FILED. IF ANY DISCREPANCIES ARISE FROM THESE FILED INVESTIGATIONS, CONTRACTOR SHALL NOTIFY ENGINEER/OWNER.



©2021 Environmental Design & Research, Landscape Architecture, Engineering, & Environmental Services, D.P.C.
The following is paraphrased from the New York Education Law, Article 145, Section 7209, and Chapter II, Section 79-14, and applies to this drawing: "It is a violation of this law for any person unless he is acting under the direction of a licensed professional engineer, licensed landscape architect or licensed land surveyor to alter an item in any way. If an item bearing the seal of an engineer, landscape architect or land surveyor is altered, the altering engineer, landscape architect or land surveyor shall affix to the item his seal and the notation "altered by" followed by his signature and the date of such alteration and a specific description of the alteration."



EDR

a better environment

Environmental
Design & Research,

Landscape Architecture, Engineering
& Environmental Services, D.P.C.
217 Montgomery Street, Suite 1100
Syracuse, New York 13202
P. 315.471.0688

PROJECT TITLE: UNION HILL AND TALLMAN PUMP STATION UPGRADE		DRAWINGS ISSUED FOR / REVISIONS				CONTRACT # 1		DRAWING NUMBER: C-202	
PROJECT LOCATION: ROCKLAND COUNTY, NEW YORK		NO.	DATE	ISSUED FOR / REVISION	BY	CHK	APP	EDR JOB# 21213	
CLIENT: ROCKLAND COUNTY SEWER DISTRICT No 1		7						DATE: 06/2023	
DRAWING TITLE: TALLMAN FORCEMAIN AIR RELEASE AND CLEANOUT MANHOLE LOCATION PLAN		2	07/22	90 PERCENT DESIGN REVIEW	MJL	RRS	MET	SCALE: NOT TO SCALE	
		3	09/22	FOR REGULATORY REVIEW	MJL	RRS	MET	DRAWN BY: MJL	
		4	01/23	100 PERCENT DESIGN REVIEW	MJL	RRS	MET	CHECKED BY: RRS	
		5	03/23	100 PERCENT DESIGN REVIEW	MJL	RRS	MET	DRAWING NUMBER:	
		6	06/23	FOR BID	MJL	RRS	MET		