

WIRE & CONDUIT SCHEDULE (SERVICE ENTRANCE)			
TAG	FEEDER SIZE	WIRING AND CONDUIT	DESCRIPTION
①	PRIMARY CONDUCTORS	(3) #2 - 15KV ALUMINUM WITH FULL CONCENTRIC NEUTRAL, 4" PVC UNDERGROUND	CABLE SIZE AND TYPE SHALL BE APPROVED BY UTILITY CO.
②	100A, 3-PHASE	(4) #1 THIN ALUMINUM, 2" SCH. 80 PVC, UNDERGROUND	SERVICE ENTRANCE CONDUCTORS
③	400A, 3-PHASE	(4) 500mm THIN, 3/2" SCH. 80 PVC UNDERGROUND	SERVICE ENTRANCE CONDUCTORS
④	400A, 3-PHASE	(4) 500mm THIN, #3 GROUND, 3" SCH. 40 PVC UNDERGROUND	GENERATOR CONDUCTORS

No.		REVISION/SUBMISSION		DATE
<small>Mechanical/Electrical/Plumbing Engineer</small>				
<div>GERARD ASSOCIATES CONSULTING ENGINEERS, D.P.C. 223 MAIN STREET, GOSHEN NY 10924 TEL: (845) 291 1272 info@GerardAssociates.com www.GerardAssociates.com</div>				
<small>GA21063</small>				
<small>Structural Engineer</small>				
<div>SZEWCZAK ASSOCIATES CONSULTING ENGINEERS 200 Fisher Drive Avon, Connecticut phone 860.677.4570 fax 860.676.0814</div>				
<div>Liscum McCormack VanVoorhis LLP 181 CHURCH STREET POUGHKEEPSIE, NEW YORK 12601 ARCHITECTURE PLANNING INTERIORS PHONE 845-452-2268 FAX 845-452-3752</div>				
PROJECT NEW FIRE STATION FOR ROMBOUT FIRE DISTRICT - STATION 2 NYS ROUTE 52, FISHKILL, NY				
DRAWING MECHANICAL & ELECTRICAL: SITE PLAN				
SEAL	DRAWN BY RL/KC	PROJECT NUMBER 18142		
	CHECKED BY JT/GH	DATE 11-30-22		
	DRAWING NUMBER			
	MEP100			
FILE	H:\2021\GA21063			

1 2 3 4 5 6 7 8 9 10 11 12 13 14 15

L

K

J

I

H

G

F

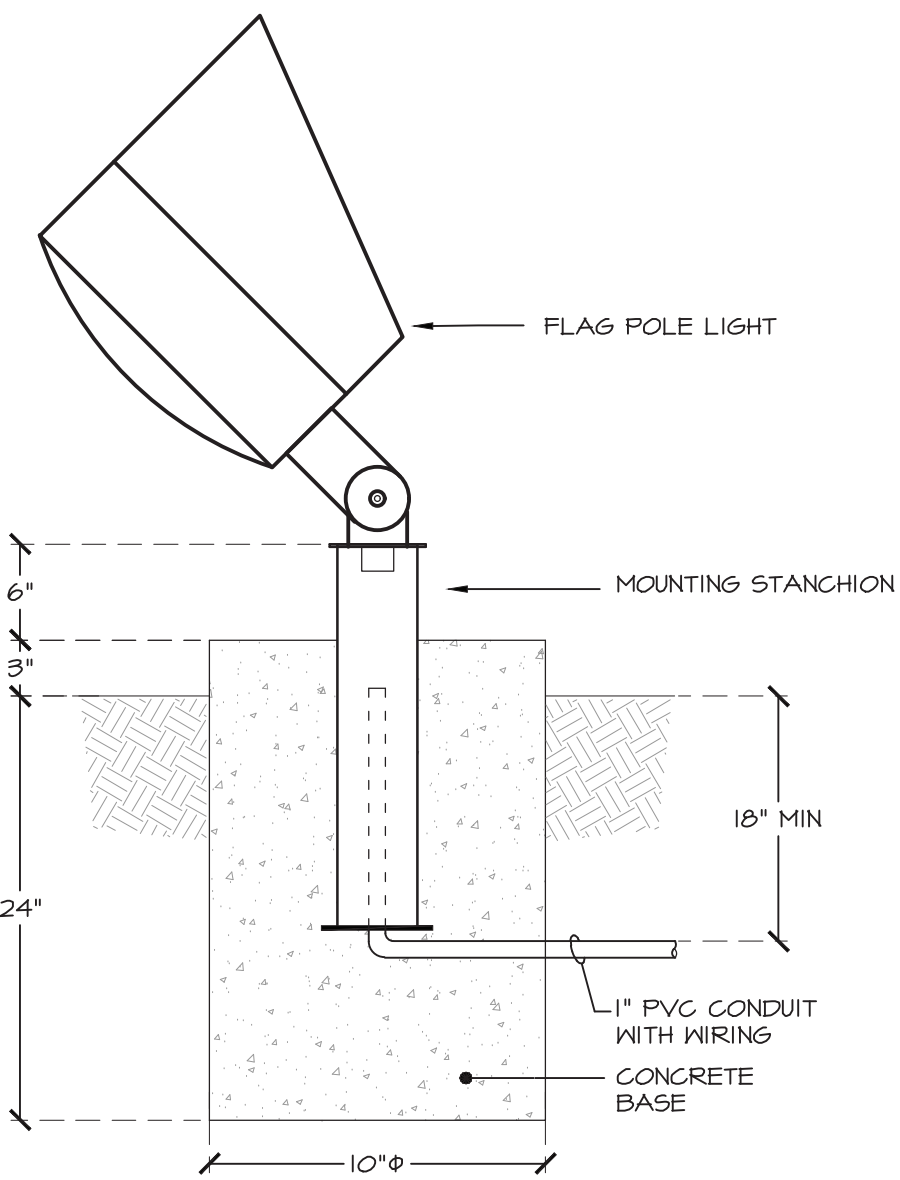
E

D

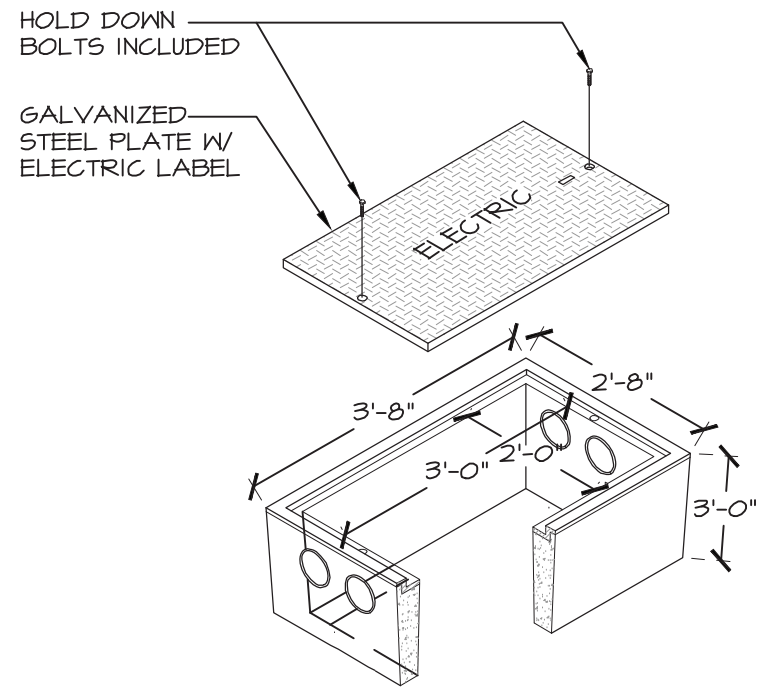
C

B

A



1 FLAG POLE LIGHT DETAIL
NOT TO SCALE

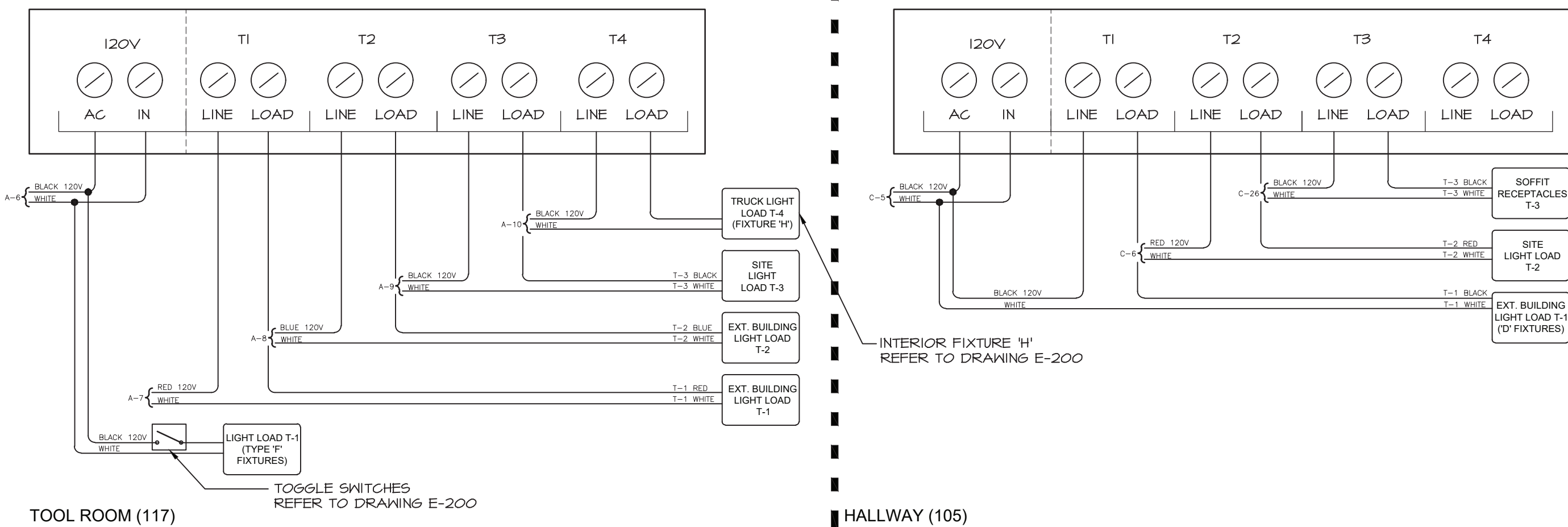


PRODUCT	DESCRIPTION
BOX	REINFORCED CONCRETE W/ THIN WALL KNOCKOUTS
LID	GALVANIZED STEEL CHECKER PLATE W/HOLD DOWN BOLTS WITH ELECTRIC LABEL

2 ELECTRIC MANHOLE DETAIL
NOT TO SCALE

NOTES:

- CONTRACTOR SHALL VERIFY ALL FIXTURE MOUNTING TYPES, LOCATIONS, AND HEIGHTS IN FIELD.
- CONTRACTOR SHALL VERIFY ALL FIXTURE FINISH AND COLOR SELECTION WITH ARCHITECT PRIOR TO PURCHASE. FIXTURE FINISH AND COLOR SELECTION SHALL BE FROM MANUFACTURERS FULL RANGE OF STANDARD AND CUSTOM COLORS.



3 LIGHTING CONTROL - TIME CLOCK
NOT TO SCALE

NOTES:

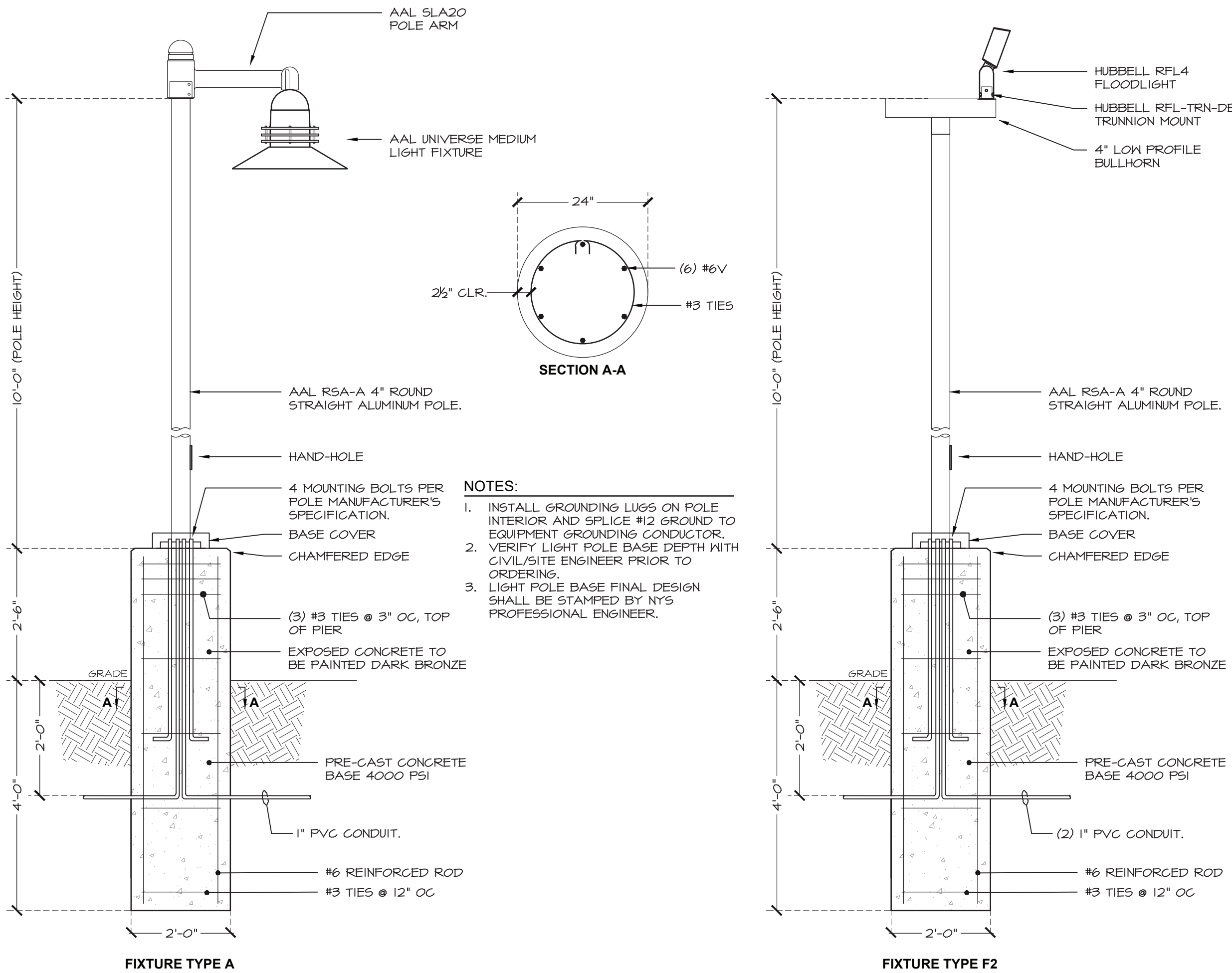
- ALL FIXTURES SHOWN, WITH THE EXCEPTION OF TYPE F, SHALL BE CONTROLLED THROUGH DIGITAL ASTRONOMICAL TIME CLOCK. TIME CLOCK CONFIGURATION SHALL BE SET BY OWNER.
- TYPE F FIXTURES SHALL BE CONTROLLED THROUGH MANUAL TOGGLE SWITCH.

ELECTRICAL FIXTURE SCHEDULE

DESIGNATION	FIXTURE MANUFACTURER	CATALOG #	POLE DESIGNATION	SOURCE	LUMENS	WATTS	VOLTAGE	DISTRIBUTION TYPE	DISCRIPTION
A1	ARCHITECTURAL AREA LIGHTING	UCM2-SR-STR-xxx-36L-260-3KT-3-DB5-SLA20-CL-SF-UNV	ARCHITECTURAL AREA LIGHTING RSA-A-10-40-A-xx-DB5	L.E.D.	3409	31.52	120V	III	24"Ø ROUND FIXTURE, MOUNTED ON 10'-0", 4" ROUND ALUM. POLE AND 1 1/2" ARM MOUNTED ON TOP OF POLE, 3000°K, DARK BRONZE. REFER TO DETAIL.
A2	ARCHITECTURAL AREA LIGHTING	UCM2-SR-STR-xxx-36L-260-3KT-3-DB5-SLA20-CL-H5-SF-UNV	ARCHITECTURAL AREA LIGHTING RSA-A-10-40-A-xx-DB5	L.E.D.	3409	31.52	120V	III	24"Ø ROUND FIXTURE WITH BACK LIGHT SHIELD, MOUNTED ON 10'-0", 4" ROUND ALUM. POLE AND 1 1/2" ARM MOUNTED ON TOP OF POLE, 3000°K, DARK BRONZE. REFER TO DETAIL.
A3	ARCHITECTURAL AREA LIGHTING	UCM2-SR-STR-xxx-36L-260-3KT-4W-DB5-SLA20-CL-SF-UNV	ARCHITECTURAL AREA LIGHTING RSA-A-10-40-A-xx-DB5	L.E.D.	3444	31.52	120V	IV	24"Ø ROUND FIXTURE, MOUNTED ON 10'-0", 4" ROUND ALUM. POLE AND 1 1/2" ARM MOUNTED ON TOP OF POLE, 3000°K, DARK BRONZE. REFER TO DETAIL.
B	ARCHITECTURAL AREA LIGHTING	UCM2-SR-STR-xxx-36L-260-3KT-4W-DB5-NMA20-CL-SF-UNV	NA	L.E.D.	3441	31.52	120V	IV	EXTERIOR WALL MOUNTED FIXTURE, 3000°K, DARK BRONZE, MOUNTED 8'-0" AFG
C	KIM LIGHTING	WD5-D-24L-30-3KT-4W-UNV-DB5	NA	L.E.D.	3261	30	120V	IV	EXTERIOR WALL MOUNTED FIXTURE, 3000°K, DARK BRONZE.
D	PROGRESS LIGHTING	P5846-108	NA	(1) MEDIUM BASE L.E.D. BULBS	800	9	120V	NA	11 3/4" TALL WALL MOUNTED FIXTURE, OIL RUBBED BRONZE FINISH, 3000°K. SHALL BE POWER THROUGH 250W CENTRAL EMERGENCY BACKUP INVERTER. MOUNTED 8'-0" AFG.
F1	HUBBELL	RFL4-176L-120 3KT-N-UNV-T-DB5	NA	L.E.D.	14647	120	120V	NA	EXTERIOR WALL MOUNTED FLOOD LIGHT WITH KNUCKLE, 3000°K, DARK BRONZE. MOUNTED 14'-4" AFG.
F2	HUBBELL	RFL4-176L-120 4KT-N-UNV-K-DB5	ARCHITECTURAL AREA LIGHTING RSA-A-10-40-A-TA-DB5	L.E.D.	14647	120	120V	NA	EXTERIOR POLE MOUNTED FLOOD LIGHT WITH KNUCKLE. MOUNTED ON 10'-0", 4" ROUND ALUM. POLE WITH 2 3/8" TENON MOUNT, 4000°K, DARK BRONZE. REFER TO DETAIL.
G	HUBBELL	RFL2-44L-25-4KT-M-UNV-K-DB5	NA	L.E.D.	3203	26	120V	NA	EXTERIOR FLAG POLE LIGHT WITH KNUCKLE. 4000°K, DARK BRONZE. REFER TO DETAIL.

FIXTURES NOTES:

- ELECTRICAL CONTRACTOR SHALL PROVIDE ADDITIONAL 'F2' TYPE FIXTURE PER OWNER'S REQUEST. CONFIRM QUANTITIES WITH OWNER PRIOR TO ORDERING.



4 POLE MOUNT LIGHT DETAIL
NOT TO SCALE

No.	REVISION/SUBMISSION	DATE
Mechanical/Electrical/Plumbing Engineer		
GERARD ASSOCIATES CONSULTING ENGINEERS, D.P.C. 223 MAIN STREET, GOSHEN NY 10924 TEL: (845) 291 1272 info@GerardAssociates.com www.GerardAssociates.com		
GA21063		
Structural Engineer		
SZEWCZAK ASSOCIATES CONSULTING ENGINEERS 200 Fisher Drive Avon, Connecticut phone 860.677.4570 fax 860.676.0814		
Liscum McCormack VanVoorhis LLP ARCHITECTURE 181 CHURCH STREET POUGHKEEPSIE, NEW YORK 12601 PLANNING INTERIORS PHONE 845-452-2268 FAX 845-452-3752		
PROJECT NEW FIRE STATION FOR ROMBOUT FIRE DISTRICT - STATION 2 NYS ROUTE 52, FISHKILL, NY		
DRAWING MECHANICAL & ELECTRICAL: SITE PLAN DETAILS		
SEAL	DRAWN BY RL/KC CHECKED BY JT/GH DATE 11-30-22 DRAWING NUMBER	PROJECT NUMBER 18142
MEPI01		
FILE	H:\2021\GA21063	