

1 PLUMBING: FIRST FLOOR PLAN
1/8" = 1'-0"

No.	REVISION/SUBMISSION	DATE

Mechanical/Electrical/Plumbing Engineer

**GERARD ASSOCIATES**
CONSULTING ENGINEERS, D.P.C.
223 MAIN STREET, GOSHEN NY 10924
TEL: (845) 291 1272
info@GerardAssociates.com www.GerardAssociates.com
GA21063

Structural Engineer

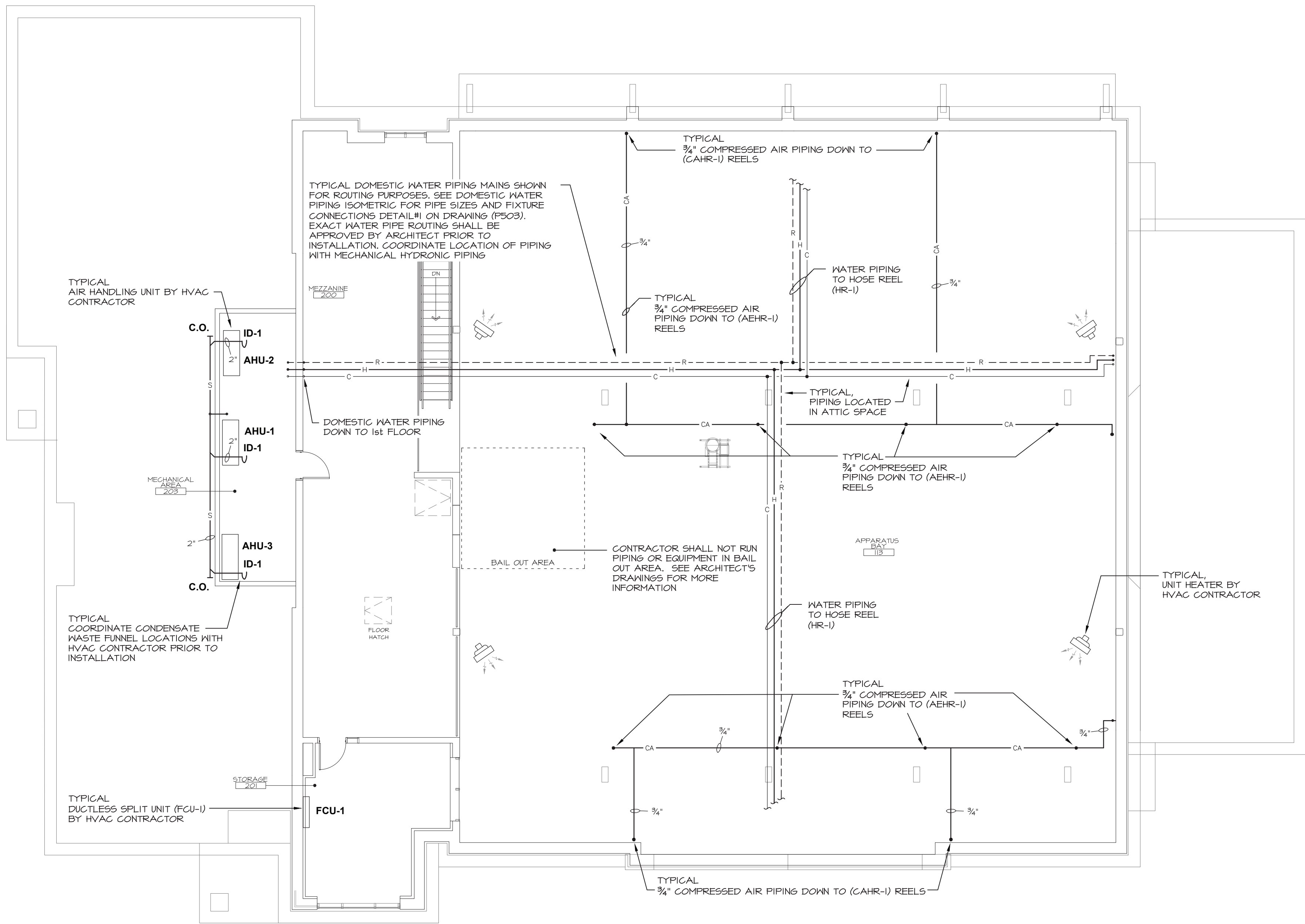
SZEWCZAK ASSOCIATES
CONSULTING ENGINEERS
200 Fisher Drive Avon, Connecticut
phone 860.677.4570 fax 860.676.0814

**Liscum McCormack VanVoorhis LLP**
181 CHURCH STREET POUGHKEEPSIE, NEW YORK 12601
ARCHITECTURE PLANNING INTERIORS PHONE 845-452-2268 FAX 845-452-3752

PROJECT
NEW FIRE STATION FOR
ROMBOUT FIRE DISTRICT - STATION 2
NYS ROUTE 52, FISHKILL, NY

DRAWING
PLUMBING:
PROPOSED FIRST FLOOR PLAN

SEAL	DRAWN BY RL/KC	PROJECT NUMBER 18142
	CHECKED BY JT/GH	DATE 11-30-22
	DRAWING NUMBER P100	
	FILE H:\2021\GA21063	



1 PLUMBING: MEZZANINE FLOOR PLAN
1/8" = 1'-0"

No.	REVISION/SUBMISSION	DATE

Mechanical/Electrical/Plumbing Engineer

GERARD ASSOCIATES
CONSULTING ENGINEERS, D.P.C.
223 MAIN STREET, GOSHEN NY 10924
TEL: (845) 291 1272
info@GerardAssociates.com www.GerardAssociates.com
GA21063

Structural Engineer

SZEWCZAK ASSOCIATES
CONSULTING ENGINEERS
200 Fisher Drive Avon, Connecticut
phone 860.677.4570 fax 860.676.0814

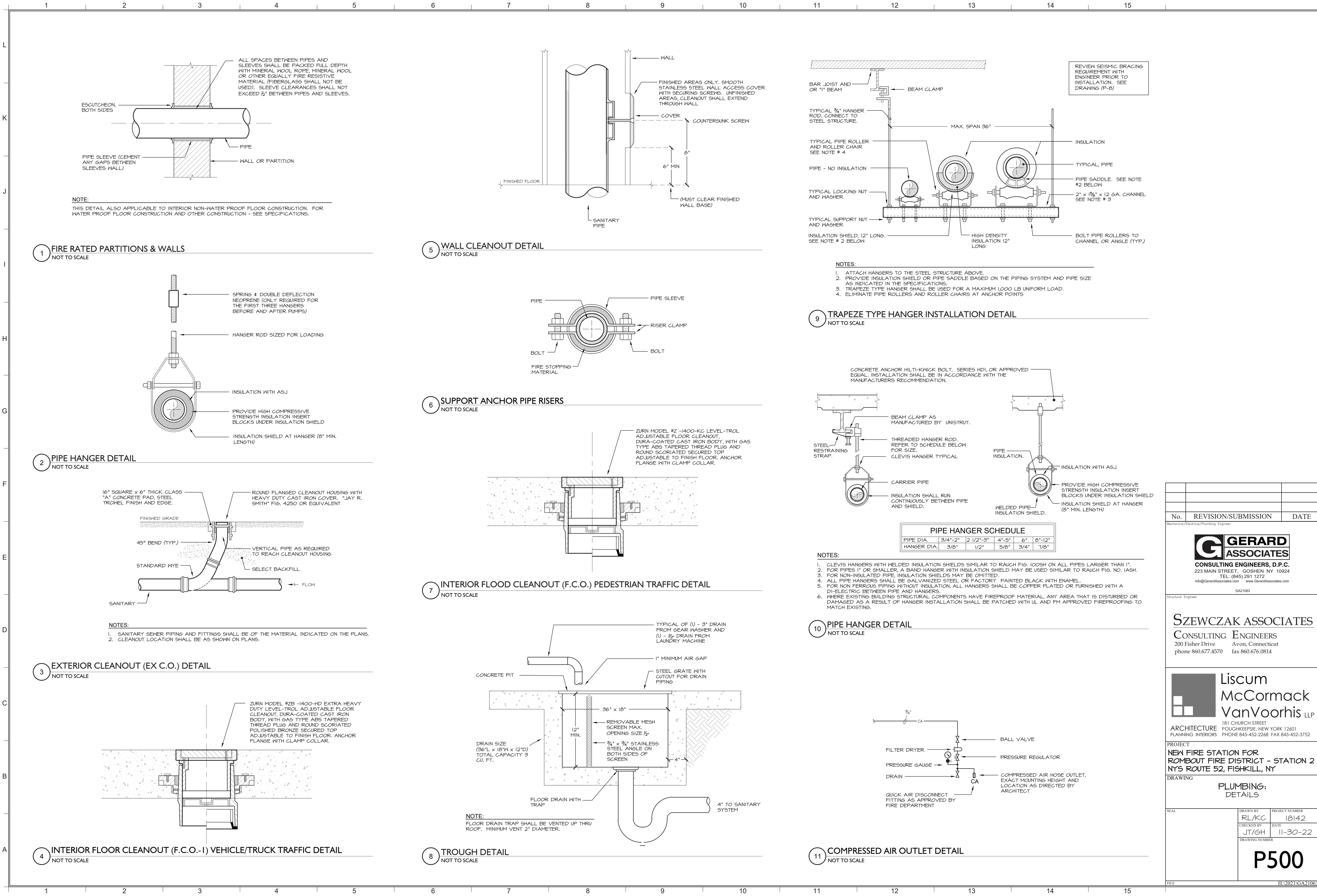
Liscum McCormack VanVoorhis LLP
181 CHURCH STREET
POUGHKEEPSIE, NEW YORK 12601
ARCHITECTURE PLANNING INTERIORS PHONE 845-452-2268 FAX 845-452-3752

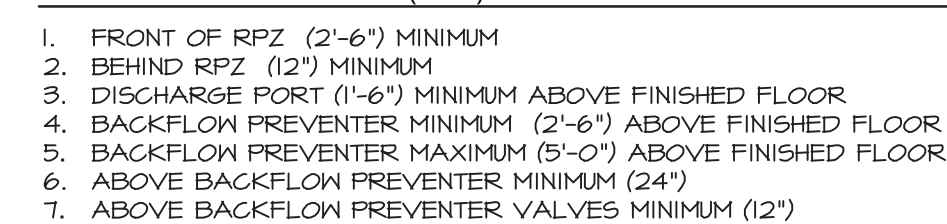
PROJECT
NEW FIRE STATION FOR
ROMBOUT FIRE DISTRICT - STATION 2
NYS ROUTE 52, FISHKILL, NY

DRAWING
PLUMBING:
PROPOSED MEZZANINE

SEAL	DRAWN BY RL/KC	PROJECT NUMBER 18142
	CHECKED BY JT/GH <th>DATE 11-30-22</th>	DATE 11-30-22
	DRAWING NUMBER PI01	

FILE H:\2021\GA21063





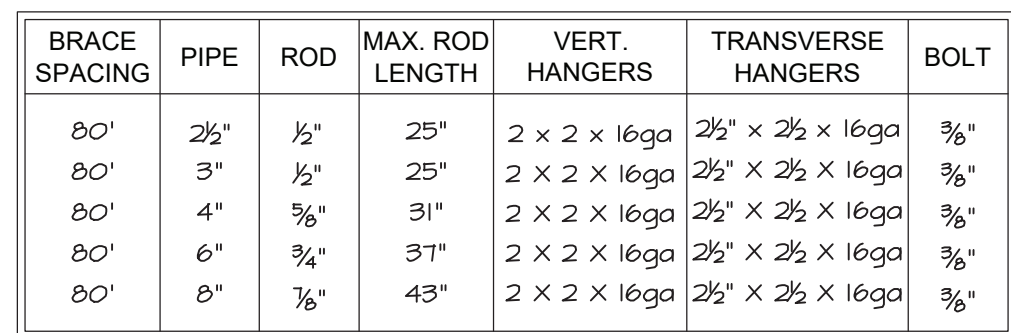
- ROOM IS ADEQUATELY HEATED AND LIGHTED
- SUPPORT PIPING AND BACKFLOW PREVENTER OFF FLOOR / WALL WITH PIPE STANCHIONS (RODS) AND ANCHOR TO FLOOR / WALL.



1. INSTALL CONTINUOUS DETECTABLE MARKING TAPE DURING BACKFILLING OF TRENCH FOR UNDERGROUND PIPING. LOCATE TAPE 12" BELOW FINISHED GRADE, DIRECTLY OVER PIPING, EXCEPT 6" BELOW SUBGRADE UNDER PAVEMENTS & SLAB.
2. TRENCHING SHALL BE IMPLEMENTED IN ACCORDANCE WITH O.S.H.A. STANDARDS.
3. 5'-0" MIN COVER SHALL BE APPLIED TO WATER MAIN.



No.	REVISION/SUBMISSION	DATE
Mechanical/Electrical/Plumbing Engineer		
<div><div><div>GERARD ASSOCIATES</div></div><div>CONSULTING ENGINEERS, D.P.C. 223 MAIN STREET, GOSHEN NY 10924 TEL: (845) 291 1272 info@GerardAssociates.com www.GerardAssociates.com</div></div>		
GA21063		
Structural Engineer		
<div><div>SZEW CZAK ASSOCIATES</div><div>CONSULTING ENGINEERS 200 Fisher Drive phone 860.677.4570</div><div>Avon, Connecticut fax 860.676.0814</div></div>		
<div><div><div>Liscum McCormack VanVoorhis LLP</div></div><div>ARCHITECTURE PLANNING INTERIORS 181 CHURCH STREET POUGHKEEPSIE, NEW YORK 12601 PHONE 845-452-2268 FAX 845-452-3752</div></div>		
PROJECT NEW FIRE STATION FOR ROMBOULT FIRE DISTRICT - STATION 2 NYS ROUTE 52, FISHKILL, NY		
DRAWING PLUMBING: DETAILS		
SEAL	DRAWN BY RL/KC CHECKED BY JT/GH DRAWING NUMBER	PROJECT NUMBER 18142 DATE 11-30-22
P501		
FILE	H:2021/GA21063	



NOT TO SCALE



NOT TO SCALE

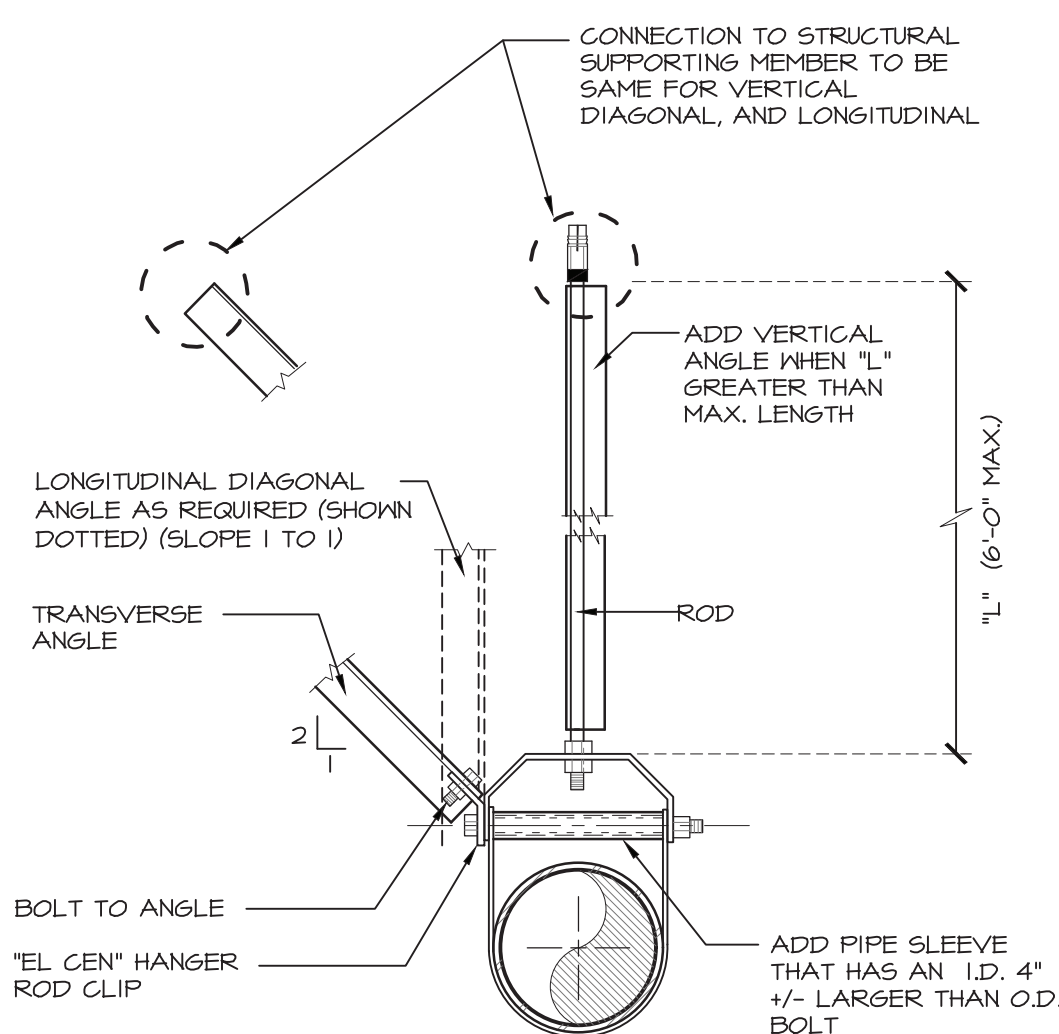


NOT TO SCALE

THE PLUMBING SYSTEM SHALL COMPLY WITH THE NEW YORK STATE UNIFORM FIRE PROTECTION AND BUILDING CODE SECTION 618 AND APPLICABLE PROVISIONS OF ASCE 7 (ARCHITECTURAL, MECHANICAL AND ELECTRICAL COMPONENT SEISMIC DESIGN REQUIREMENTS).

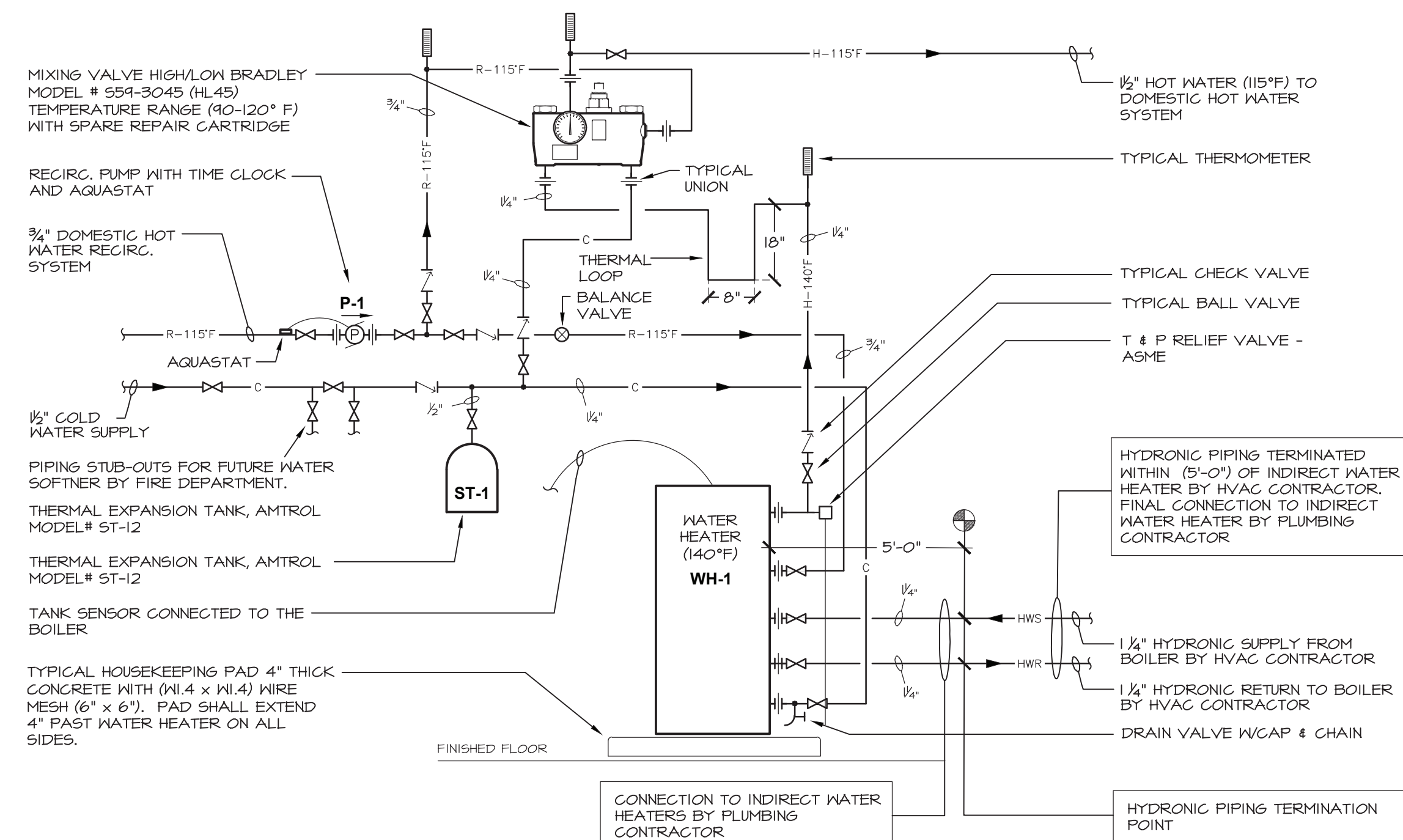
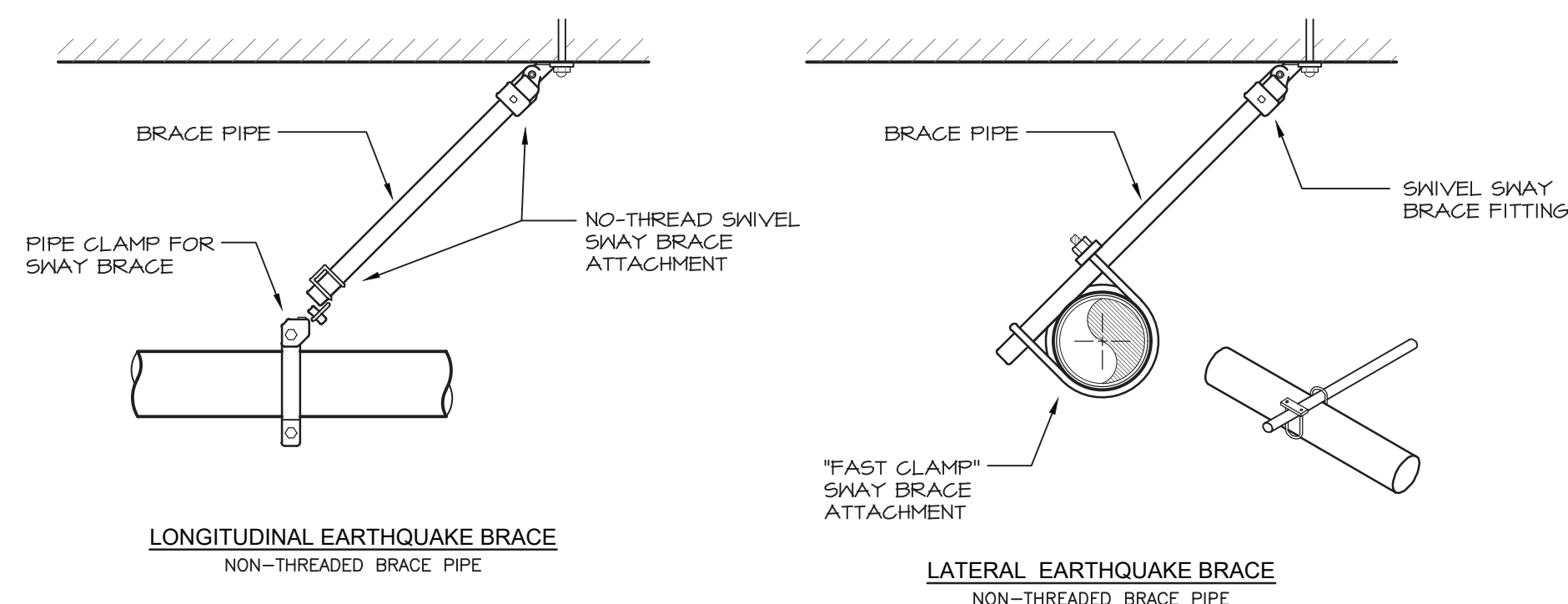
PLUMBING CONTRACTOR SHALL HIRE NYS LICENSED PROFESSIONAL ENGINEER TO DESIGN AND PREPARE SAGP DRAWINGS WITH CALCULATIONS FOR EACH EQUIPMENT SUPPORT, PIPE SUPPORT, MULTIPLE PIPE SUPPORT, TRAFFEY AND SEISMIC RESTRAINT. SUBMIT SHOP DRAWINGS WITH CALCULATIONS TO ENGINEER FOR RECORD AND TO LOCAL AUTHORITY HAVING JURISDICTION FOR APPROVAL.

SEISMIC REQUIREMENTS:
BUILDING USE CATEGORY - IV
SEISMIC DESIGN CATEGORY - C



BRACE SPACING	PIPE	ROD	MAX. ROD LENGTH	VERT. HANGERS	TRANSVERSE HANGERS	BOLT
40"	2½"	½"	25"	2 x 2 x 16ga	2½" x 2½" x 16ga	¾"
40"	3"	½"	25"	2 x 2 x 16ga	2½" x 2½" x 16ga	¾"
40"	4"	¾"	31"	2 x 2 x 16ga	2½" x 2½" x 16ga	¾"
40"	6"	¾"	37"	2 x 2 x 16ga	2½" x 2½" x 16ga	¾"
40"	8"	7⁄8"	43"	2 x 2 x 16ga	2½" x 2½" x 16ga	¾"

NOT TO SCALE



NOTE:
HVAC CONTRACTOR SHALL RUN HYDRONIC PIPING FROM BOILER TO (5'-0" TO INDIRECT WATER HEATER). PLUMBING CONTRACTOR SHALL MAKE FINAL HYDRONIC PIPING CONNECTIONS TO INDIRECT HEATER. COORDINATE HYDRONIC PIPING TERMINATION POINT WITH HVAC CONTRACTOR.

5) NOT TO SCALE

No.	REVISION/SUBMISSION	DATE

Mechanical/Electrical/Plumbing Engineers



CONSULTING ENGINEERS, D.P.C.
223 MAIN STREET, GOSHEN NY 10924
TEL: (845) 291 1272
info@GerardAssociates.com www.GerardAssociates.com

GA21063

Structural Engineer

SZEWCZAK ASSOCIATES

CONSULTING ENGINEERS
200 Fisher Drive
phone 860.677.4570
Avon, Connecticut
fax 860.676.0814



ARCHITECTURE
PLANNING INTERIORS

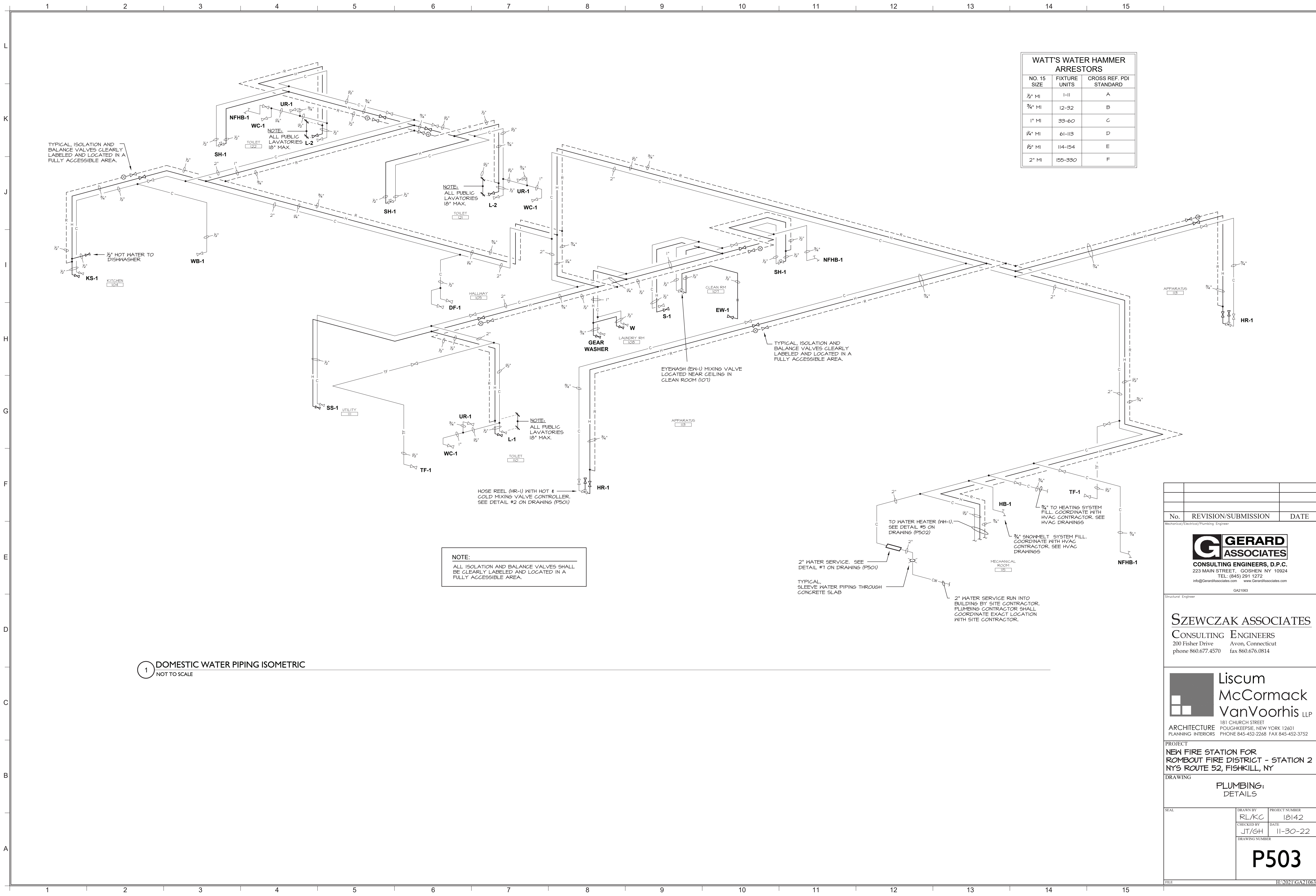
PROJECT
NEW FIRE STATION FOR
ROMBOUT FIRE DISTRICT - STATION 2
NYS ROUTE 52, FISHKILL, NY

PLUMBING: DETAILS

SEAL	DRAWN BY	PROJECT NUMBER
	RL/KC	18142
	CHECKED BY	DATE
	JT/GH	11-30-22
DRAWING NUMBER		

P502

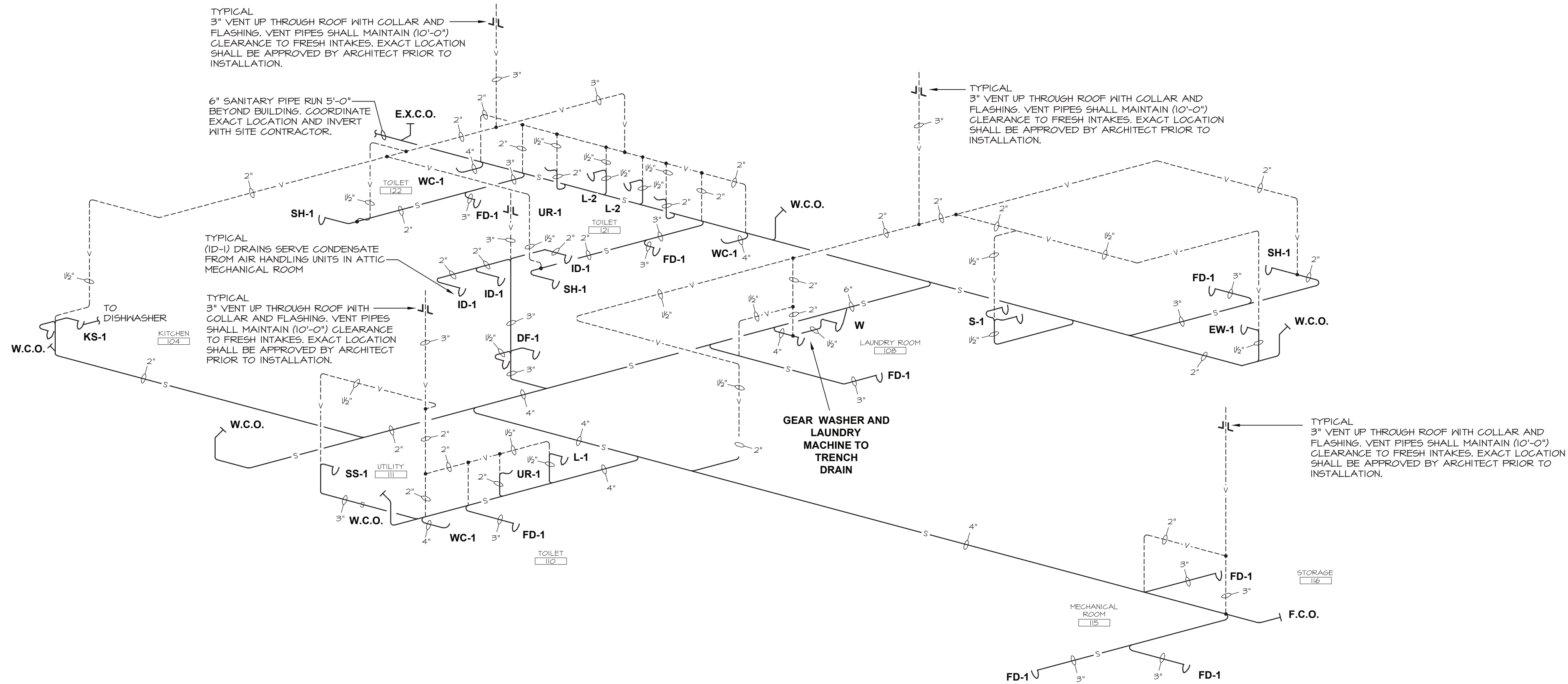
FILE	H:\2021\GA210
------	---------------



WATT'S WATER HAMMER ARRESTORS		
NO. 15 SIZE	FIXTURE UNITS	CROSS REF. PDI STANDARD
1/2" MI	1-11	A
3/4" MI	12-32	B
1" MI	33-60	C
1 1/4" MI	61-113	D
1 1/2" MI	114-154	E
2" MI	155-330	F

1 DOMESTIC WATER PIPING ISOMETRIC
NOT TO SCALE

No. REVISION/SUBMISSION DATE		
Mechanical/Electrical/Plumbing Engineer		
GERARD ASSOCIATES CONSULTING ENGINEERS, D.P.C. 223 MAIN STREET, GOSHEN NY 10924 TEL: (845) 291 1272 info@GerardAssociates.com www.GerardAssociates.com GA21063		
Structural Engineer		
SZEWCZAK ASSOCIATES CONSULTING ENGINEERS 200 Fisher Drive Avon, Connecticut phone 860.677.4570 fax 860.676.0814		
Liscum McCormack VanVoorhis LLP 181 CHURCH STREET POUGHKEEPSIE, NEW YORK 12601 ARCHITECTURE PLANNING INTERIORS PHONE 845-452-2268 FAX 845-452-3752		
PROJECT NEW FIRE STATION FOR ROMBOUT FIRE DISTRICT - STATION 2 NYS ROUTE 52, FISHKILL, NY		
DRAWING PLUMBING: DETAILS		
SEAL	DRAWN BY RL/KC CHECKED BY JT/GH DRAWING NUMBER	PROJECT NUMBER 18142 DATE 11-30-22
P503		
FILE	H:\2021\GA21063	



L	1	2	3	4	5	6	7	8	9	10	11	12	13	14	15	L
K																K
J																J
I																I
H																H
G																G
F																F
E																E
D																D
C																C
B																B
A																A
	1	2	3	4	5	6	7	8	9	10	11	12	13	14	15	

PLUMBING NOTES:

1.

ALL PLUMBING WORK SHALL BE INSTALLED IN ACCORDANCE WITH 2020 PLUMBING, FIRE, MECHANICAL, FUEL GAS, BUILDING, ENERGY CONSERVATION CONSTRUCTION CODE OF NEW YORK STATE, ALL LOCAL CODES AND GENERALLY ACCEPTED STANDARDS.

2.

PLUMBING CONTRACTOR SHALL PROVIDE ALL FIXTURES, PIPING, VALVES, ACCESS DOORS, HANGERS, FITTINGS AND MISCELLANEOUS COMPONENTS NOT NECESSARILY DETAILED ON THESE DRAWINGS TO RENDER THE PLUMBING SYSTEMS COMPLETE, OPERABLE, AND IN ACCORDANCE WITH APPLICABLE CODES AND GENERALLY ACCEPTED INDUSTRY STANDARDS.

3.

PLUMBING CONTRACTOR SHALL COORDINATE LOCATIONS OF ALL PIPING AND EQUIPMENT WITH OTHER TRADES TO AVOID CONFLICTS. ROUGH-IN DIMENSIONS OF FIXTURES MUST BE COORDINATED WITH GENERAL CONTRACTOR. SEE ARCHITECT'S DRAWINGS FOR EXACT LOCATIONS AND ELEVATIONS OF PLUMBING FIXTURES.

4.

ALL PIPE OPENINGS THROUGH PARTITIONS, FLOORS AND CEILINGSS SHALL HAVE PIPE SLEEVES. FOR PIPE PENETRATING FIRE RATED PARTITIONS, CEILINGSS AND FLOORS THE PLUMBING CONTRACTOR SHALL SEAL AROUND ALL PIPE PENETRATIONS WITH HILTI INTUMESCENT FIRE STOP MATERIAL BETWEEN THE PIPE AND SLEEVE TO MAINTAIN FIRE AND SMOKE RATINGS.

5.

PLUMBING CONTRACTOR SHALL FITCH ALL SANITARY PIPING UNDER 3" A MINIMUM OF 1/4" PER FOOT. SANITARY PIPING 3" AND ABOVE MAY BE PITCHED A MINIMUM OF 1/8" PER FOOT.

6.

PLUMBING CONTRACTOR SHALL GUARANTEE ALL WORKMANSHIP AND MATERIAL INSTALLED UNDER THIS CONTRACT FREE FROM DEFECTS FOR A PERIOD OF ONE (1) YEAR FROM DATE OF SUBSTANTIAL COMPLETION AND ACCEPTANCE BY THE OWNER AND AGREES TO REPLACE DEFECTIVE WORK (INCLUDING ALL REQUIRED LABOR AND MATERIAL) AT NO ADDITIONAL COST TO OWNER DURING THE GUARANTEE PERIOD.

7.

PLUMBING CONTRACTOR SHALL SUBMIT SHOP DRAWINGS ON ALL EQUIPMENT, PIPING, INSULATION, VALVES AND PLUMBING FIXTURES TO OWNER AND ARCHITECT FOR APPROVAL. DEMONSTRATE NEW PLUMBING SYSTEMS TO OWNERS AND REVIEW MAINTENANCE PROCEDURES.

8.

PROVIDE CHROME PLATED ESCUTCHEON PLATES WHERE PIPES PASS THROUGH WALLS, FLOORS AND CEILINGSS IN FINISHED AREAS.

9.

PLUMBING CONTRACTOR SHALL COORDINATE FINAL LOCATIONS OF ALL PIPING IN FINISHED AREAS WITH GENERAL CONTRACTOR TO ENSURE CONCEALMENT OF ALL PIPING IN WALLS, FLOORS, CEILINGSS AND UNDER VANITIES. PIPING IN APPARATUS AND ANCILLARY AREAS MAY BE SURFACE MOUNTED. COORDINATE WITH ARCHITECT.

10.

PLUMBING CONTRACTOR SHALL LOCATE ALL PIPING ON THE WARM SIDE OF BUILDING INSULATION ENVELOPE.

11.

PLUMBING CONTRACTOR SHALL FURNISH AND INSTALL ALL CONTROL WIRING (24V) AND (120V) FOR SYSTEMS SHOWN ON PLUMBING DRAWINGS AND TRANSFORMERS, CONDUIT, JUNCTION BOXES, CONDUCTORS, THERMOSTATS, AFFURTENANCES AND ALL NECESSARY EQUIPMENT TO MAKE SYSTEMS COMPLETE AND OPERABLE.

12.

ALL CONTROL WIRING SHALL BE IN ACCORDANCE WITH THE NATIONAL ELECTRICAL CODE (LATEST ADOPTED ADDITION) AND ALL LOCAL CODES. ALL CONDUCTORS SHALL BE COPPER WITH THIN INSULATION. 120V/1 - MINIMUM CONDUCTOR SIZE # 12. 24V - MINIMUM CONDUCTOR SIZE # 18.

13.

PLUMBING CONTRACTOR SHALL PAY FOR ALL PERMITS AND INSPECTIONS FEES REQUIRED BY LOCAL AUTHORITY HAVING JURISDICTION.

14.

PLUMBING CONTRACTOR SHALL PROVIDE ACCESS DOORS FOR ALL VALVES CONCEALED IN WALLS/CEILINGSS. ACCESS DOORS SHALL HAVE APPROPRIATE FIRE RATING TO MAINTAIN INTEGRITY OF WALL/CEILING. ACCESS DOORS TO BE INSTALLED BY GENERAL CONTRACTOR.

15.

PLUMBING CONTRACTOR SHALL NOT DRILL OR CUT ANY STRUCTURAL MEMBERS WITHOUT PERMISSION OF ARCHITECT, OR STRUCTURAL ENGINEER.

16.

PLUMBING CONTRACTOR IS RESPONSIBLE FOR INSULATING ALL DOMESTIC HOT, RECIRCULATION AND COLD WATER PIPING. SEE PLUMBING INSULATION SCHEDULE ON THIS DRAWING.

17.

ALL DOMESTIC WATER PIPING CONNECTIONS TO PLUMBING EQUIPMENT SHALL BE COPPER TYPE "L".

18.

ALL NEW PIPES ARE TO BE SUPPORTED FROM STRUCTURE, NOT FROM OTHER PIPING OR DUCTWORK.

19.

PLUMBING CONTRACTOR SHALL BE RESPONSIBLE FOR DRAINING AND REFILLING SYSTEMS AS REQUIRED FOR COMPLETION OF WORK.

20.

CONNECTIONS TO UTILITIES AND SERVICES ARE SHOWN ACCORDING TO THE BEST INFORMATION AVAILABLE. THE PLUMBING CONTRACTOR SHALL VERIFY THE EXACT LOCATIONS, INVERT ELEVATIONS, AND SIZES OF PLUMBING SERVICES IN FIELD, AND SHALL CONNECT NEW PLUMBING SERVICES AS INDICATED ON DRAWINGS.

21.

PROVIDE DIELECTRIC FITTINGS OR COUPLINGS WHEREVER DISSIMILAR METALS ARE JOINED.

22.

PROVIDE SHUTOFF VALVES AT ALL FIXTURES AND EQUIPMENT ON COLD WATER, HOT WATER, AND GAS SUPPLY PIPES.

23.

ALL WORK SHALL BE PROPERLY TESTED, BALANCED, AND CLEANED AND DISINFECTED. SUBMIT REPORT STATING COMPLETION.

24.

A CLEANOUT SHALL BE LOCATED AT ALL CHANGES IN DIRECTION AND AT THE BASE OF EACH STACK AND LEADER.

25.

ALL MOTOR STARTERS AND DISCONNECT SWITCHES FOR PLUMBING EQUIPMENT SHALL BE FURNISHED BY THE PLUMBING CONTRACTOR AND INSTALLED BY THE ELECTRICAL CONTRACTOR, UNLESS OTHERWISE NOTED. DISCONNECT SWITCHES FURNISHED BY THE PLUMBING CONTRACTOR FOR PLUMBING EQUIPMENT SHALL BE HEAVY DUTY TYPE.

26.

FIXTURE (GENERAL):

A.

FIXTURE SHALL BE COMPLETE WITH REQUIRED TRIM, INCLUDING BUT NOT LIMITED TO: SUPPORTS, FAUCETS, SUPPLIES, STOP VALVES, 1" GAUGE WASTE TAILPIECES, TRAPS, SEATS, FLUSHOMETER, VACUUM BREAKER, BOLTS, GASKETS CHROME PLATED EXUTCHEONS, CAST BRASS FLOOR FLANGE AND BOLT CAPS. ALL SCREWS SHALL BE VALDELPROOF.

B.

EXPOSED METAL TRIM AND ROUGHING SHALL BE CHROME PLATED NICKEL BRASS. CHROME PLATED CAST BRASS 1" TRAPS WITH SCREW PLUS CLEANOUT, SLIP-JOINT INLET AND FEMALE CAST SHIVEL THREADED ELBOW OUTLET. CHROME PLATED BRASS NIPPLE AT WALL WITH CHROME PLATED ESCUTCHEON. SWING SPOUTS SHALL HAVE 140° SWING LIMIT STOPS.

29.

PIPE TESTING:

A.

UPON COMPLETION OF THE ENTIRE SANITARY DRAIN AND VENT SYSTEM, THE PLUMBING CONTRACTOR SHALL PERFORM AN AIR TEST WITNESSED BY AUTHORITY HAVING JURISDICTION. AIR SHALL BE FORCED INTO THE SYSTEM UNTIL THERE IS A UNIFORM GAUGE PRESSURE OF 5 PSI OR SUFFICIENT TO BALANCE A 10 INCH COLUMN OF MERCURY. THIS TEST SHALL BE HELD FOR A PERIOD OF AT LEAST 15 MINUTES.

B.

WATER SUPPLY SYSTEM TEST SHALL BE DONE ON COMPLETION OF A SECTION OF OR THE ENTIRE WATER SUPPLY SYSTEM, THE SYSTEM, OR THE PORTION COMPLETED, SHALL BE TESTED AND PROVED TIGHT UNDER A WATER PRESSURE NOT LESS THAN THE WORKING PRESSURE OF THE SYSTEM, OR, BY AN AIR TEST OF NOT LESS THAN 50 PSI. TEST PRESSURE SHALL BE HELD FOR A MINIMUM OF 15 MINUTES. THE WATER UTILIZED FOR TESTS SHALL BE OBTAINED FROM A POTABLE SOURCE OF SUPPLY.

C.

REFER TO INTERNATIONAL PLUMBING CODE FOR ADDITIONAL TESTING REQUIREMENTS.

30.

DOMESTIC WATER PIPING DISINFECTION:

A.

ALL OPEN ENDS OF PIPING, VALVES AND EQUIPMENT SHALL BE PLUGGED EXCEPT WHEN ACTUAL WORK IS BEING PERFORMED, TO MINIMIZE ACCUMULATION OF DIRT AND DEBRIS.

B.

THE PLUMBING CONTRACTOR SHALL DISINFECT WATER PIPING BEFORE IT IS PLACED IN SERVICE.

C.

THE PLUMBING CONTRACTOR SHALL FURNISH ALL EQUIPMENT AND MATERIALS NECESSARY TO DO THE WORK OF DISINFECTING, AND SHALL PERFORM THE WORK IN ACCORDANCE WITH THE PROCEDURE OUTLINED IN THE ANWA C651 OR ANWA C652 OR AS DESCRIBED BELOW.

D.

SYSTEM OR PART THEREOF SHALL BE FILLED WITH A WATER/CHLORINE SOLUTION CONTAINING AT LEAST 50 PARTS PER MILLION OF CHLORINE AND THE SYSTEM OR PART THEREOF SHALL BE ALLOWED TO STAND FOR 24 HOURS.

E.

DURING THE DISINFECTION PERIOD, CARE SHALL BE EXERCISED TO PREVENT CONTAMINATION OF WATER IN THE STREET MAIN OR THE ACTIVE WATER PIPING WITHIN THE BUILDING.

F.

FOLLOWING REQUIRED STANDING TIME, THE SYSTEM SHALL BE FLUSHED WITH CLEAN POTABLE WATER UNTIL THE CHLORINE IS PURGED FROM THE SYSTEM.

31.

PIPING AND EQUIPMENT IDENTIFICATION:

A.

PLUMBING CONTRACTOR TO PROVIDE OPTI-CODE LABELS FOR ALL NEW PIPING. LABELS SHALL INDICATE SERVICE AND FLOW DIRECTION. LETTERS AND ARROWS INDICATING FLOW SHALL BE 2 1/2" HIGH, PLACED EVERY 10" AND SHALL BE WHITE ON A GREEN BACKGROUND AND SHALL CONFORM TO ANSI AND OSHA STANDARDS. LABELS SHALL BE APPLIED OVER INSULATION ONLY.

B.

VALVE SERVICE IDENTIFICATION TAGS: NUMBER 19 B&S GAGE BRASS, WITH 1/4" HIGH VALVE SERVICE ABBREVIATED LETTERING ON ONE LINE OVER 1/2" HIGH VALVE SERVICE CHART NUMBER, BOTH DEEP STAMPED AND BLACK FILLED; AND WITH 3/16" TOP HOLE FOR BRASS "S" HOOK OR BRASS JACK CHAIN FASTENER.

C.

PROVIDE VALVE SERVICE IDENTIFICATION CHART MOUNTED IN LOCATION COORDINATED WITH OWNER'S REPRESENTATIVE. FRAME SHALL BE SATIN FINISHED EXTRUDED ALUMINUM WITH RIGID CLEAR PLASTIC GLAZING, SIZE TO FIT 8-1/2" x 11" VALVE CHART.

D.

EQUIPMENT SHALL HAVE 3" HIGH BLACK LAMACOID NAME PLATES WITH WHITE ENGRAVED LETTERS PERMANENTLY FASTENED TO ALL NEW EQUIPMENT.

32.

PLUMBING CONTRACTOR SHALL BE RESPONSIBLE FOR PROVIDING START-UP OF ALL NEW EQUIPMENT, CONTROLS, AND ETC. TO ENSURE CORRECT OPERATION OF INSTALLED DEVICES.

33.

PLUMBING CONTRACTOR SHALL PROVIDE OWNER WITH CATALOG DATA, OPERATING INSTRUCTIONS, MAINTENANCE INSTRUCTIONS, AND RECORD (AS-BUILT) DRAWINGS OF ALL COMPLETED WORK.

34.

PLUMBING CONTRACTOR IS RESPONSIBLE FOR COORDINATING ALL CUTTING, PATCHING, AND PAINTING ASSOCIATED WITH PLUMBING WORK WITH THE GENERAL CONTRACTOR, WHO SHALL PERFORM THE WORK AT PLUMBING CONTRACTORS COST. ALL FLOORS AND WALLS WHERE A PIPE HAS BEEN REMOVED AND NOT REPLACED SHALL BE PATCHED BY THE GENERAL CONTRACTOR, PLUMBING CONTRACTOR SHALL COORDINATE LOCATION AND PAY ALL COSTS.

PIPE HANGER SCHEDULE

PIPE SIZE (INCHES)	MAXIMUM HORIZONTAL SPACING (FEET)				SINGLE STEEL ROD HANGER SIZE (INCHES)		HANGER TYPE STEEL	MAXIMUM VERTICAL SPACING (FEET)			
	COPPER TUBE	CAST IRON	STEEL PIPE	CPVC PIPE	TUBING	PIPING		COPPER TUBE	CAST IRON	STEEL PIPE	CPVC PIPE
1/2"	6	5	8 (5)	3	1/4"	3/8"	BAND	10	15	15	10
3/4"	6	5	8 (5)	3	1/4"	3/8"	BAND	10	15	15	10
1"	6	5	8 (5)	3	1/4"	3/8"	BAND	10	15	15	10
1 1/4"	6	5	9 (5)	4	1/4"	3/8"	CLEVIS	10	15	15	10
1 1/2"	6	5	9 (5)	4	1/4"	3/8"	CLEVIS	10	15	15	10
2"	10	5	10 (5)	4	1/4"	3/8"	CLEVIS	10	15	15	10
2 1/2"	10	5	12 (5)	4	3/8"	1/2"	CLEVIS	10	15	15	10
3"	10	5	12 (5)	4	3/8"	1/2"	CLEVIS	10	15	15	10
4"	10	5	12 (5)	4	1/2"	3/8"	CLEVIS	10	15	15	10
5"	10	5	12 (5)	4	1/2"	3/8"	CLEVIS	10	15	15	10
6"	10	5	12 (5)	4	1/2"	3/4"	CLEVIS	10	15	15	10
8"	10	5	12 (5)	4	3/8"	7/8"	CLEVIS	10	15	15	10
10"	10	5	12 (5)	4	3/8"	7/8"	CLEVIS	10	15	15	10
12"	10	5	12 (5)	4	3/8"	7/8"	CLEVIS	10	15	15	10

NOTES:

1.

MAXIMUM HORIZONTAL SPACING OF CAST-IRON PIPE HANGERS SHALL BE INCREASED TO 10 FEET WHERE 10 FOOT LENGTHS OF PIPE ARE INSTALLED.

2.

INSTALL HANGER OR SUPPORT CLOSE TO THE POINT OF CHANGE OF DIRECTION IN ALL PIPE RUNS.

3.

INSTALL ADDITIONAL HANGERS ON SUPPORTS AT CONCENTRATED LOADS.

4.

SUPPORT ALL BRANCH PIPING OVER 5'-0" IN LENGTH.

5.

1/2" GAS PIPING SHALL BE SUPPORTED EVERY 6'-0". 3/4" AND 1" GAS PIPING SHALL BE SUPPORTED EVERY 8'-0". 1 1/4" AND LARGER GAS PIPING SHALL BE SUPPORTED EVERY 10'-0".

6.

SUPPORT VERTICAL PIPING AT EVERY FLOOR.

SERVICE WATER PIPING INSULATION - COMMERCIAL

(THICKNESS IN INCHES)

PIPING ON RETURN CIRCULATION HOT WATER SYSTEMS SHALL BE INSULATED WITH 1 INCH OF INSULATION HAVING A CONDUCTIVITY NOT EXCEEDING 0.28 BTU PER INCH/H x FT² x °F (1.54 W PER 25 MM/M² x K). THE FIRST 8 FEET OF PIPING IN NONCIRCULATING SYSTEMS SERVED BY EQUIPMENT WITHOUT INTEGRAL HEAT TRAPS SHALL BE INSULATED WITH 0.5 INCH OF MATERIAL HAVING A CONDUCTIVITY NOT EXCEEDING 0.28 BTU PER INCH/H x FT² x °F (1.54 W PER 25 MM/M² x K).

PIPE HANGER SCHEDULE

PIPE SIZE INCHES	SPACING - FEET		ROD SIZE STEEL INCHES	HANGER TYPE STEEL
	SCHEDULE 40	PVC PIPE WATER		
3/4"	4		1/4"	CLEVIS HANGER
1	4.5		1/4"	CLEVIS HANGER
1 1/4"	5		1/4"	CLEVIS HANGER
1 1/2"	5		3/8"	CLEVIS HANGER
2	5		3/8"	CLEVIS HANGER
2 1/2"	6		3/8"	CLEVIS HANGER
3	6		3/8"	CLEVIS HANGER
4	6.5		1/2"	CLEVIS HANGER

PLUMBING PIPE INSULATION SCHEDULE

SERVICE	INSULATION THICKNESS (INCHES)	
	PIPE SIZE (INCHES)	
	BELOW 1 1/2"	1 1/2" AND OVER
COLD WATER	1/2"	1/2"
HOT WATER	1"	1 1/2"
HOT WATER RECIRCULATION	1"	1 1/2"
HORIZONTAL / VERTICAL STORM PIPING	1"	1"

NOTES:

1.

PIPE COVERINGS SHALL BE FIBERGLASS PIPE INSULATION WITH FIRE RETARDANT VAPOR BARRIER JACKET, 0.25 K-FACTOR AT 15°F MEAN TEMPERATURE, FLAME SPREAD = 25, SMOKE DEVELOPED = 50.

2.

FITTINGS AND VALVES SHALL BE PROVIDED WITH PREMOLDED FITTING COVERS WITH PVC JACKETING OVAL IN THICKNESS AND MATERIAL TO ADJOINING PIPE INSULATION.

No.

REVISION/SUBMISSION

DATE

Mechanical/Electrical/Plumbing Engineer

GERARD ASSOCIATES

CONSULTING ENGINEERS, D.P.C.

223 MAIN STREET GOSHEN NY 10924

TEL: (845) 291 1272

info@GerardAssociates.com www.GerardAssociates.com

GA21063

Structural Engineer

SZEWCZAK ASSOCIATES

CONSULTING ENGINEERS

200 Fisher Drive Avon, Connecticut

phone 860.677.4570 fax 860.676.0814

Liscum McCormack VanVoorhis LLP

ARCHITECTURE

181 CHURCH STREET

POUGHKEEPSIE, NEW YORK 12601

PLANNING INTERIORS PHONE 845-452-2268 FAX 845-452-3752

PROJECT

NEW FIRE STATION FOR ROMBOUT FIRE DISTRICT - STATION 2

NYS ROUTE 52, FISHKILL, NY

DRAWING

PLUMBING: EQUIPMENT SCHEDULES

SEAL

DRAWN BY

RL/KC

CHECKED BY

JT/GH

DRAWING NUMBER

P600

PROJECT NUMBER

18142

DATE

11-30-22

FILE

H:\2021\GA21063

1	2	3	4	5	6	7	8	9	10	11	12	13	14	15
PLUMBING EQUIPMENT SCHEDULE														
SYMBOL	MANUFACTURER	CATALOG #	DESCRIPTION											
— S —	—	—	SANITARY PIPING, SCHEDULE 40 PVC, PVC FITTINGS WITH SOLVENT WELDED JOINTS BELOW GRADE. SCHEDULE 40 PVC WITH SOLVENT WELDED JOINTS 6" ABOVE GRADE.											
— V —	—	—	VENT PIPING, SCHEDULE 40 PVC, PVC FITTINGS WITH SOLVENT WELDED JOINTS BELOW GRADE AND SCHEDULE 40 PVC WITH SOLVENT WELDED JOINTS 6" ABOVE GRADE.											
— C —	—	—	DOMESTIC COLD WATER PIPING, COPPER TYPE "L" WITH LEADFREE SOLDER JOINTS ABOVE GRADE AND COPPER TYPE "K" FOR UNDERGROUND PIPING 3" OR LESS. NO JOINTS PERMITTED BELOW GRADE. INSULATE UNDERGROUND WITH 1" THICK ELASTOMERIC INSULATION. INSULATE ALL ABOVE GROUND PIPING WITH ½" THICK FIBERGLASS PIPE INSULATION WITH VAPOR PROOF JACKET, TAPED JOINTS AND PVC FITTING COVERS. EXPOSED PIPING IN FINISHED AREAS OR AS NOTED SHALL BE COVERED WITH PVC PIPE COVER AND PAINTED. (1) - COAT PRIMER, (2) COATS - PAINT. COLOR AS DIRECTED BY ARCHITECT											
— H —	—	—	DOMESTIC HOT WATER PIPING, COPPER TYPE "L" WITH LEADFREE SOLDER JOINTS ABOVE GRADE AND COPPER TYPE "K" FOR UNDERGROUND PIPING. NO JOINTS PERMITTED BELOW GRADE. INSULATE UNDERGROUND PIPING UP TO 1 ½" DIA WITH 1" AND PIPING ABOVE 1 ½" DIA USE 1 ½" THICK ELASTOMERIC INSULATION. INSULATE ALL ABOVE GROUND PIPING UP TO 1 ½" DIA WITH 1" AND PIPING ABOVE 1 ½" DIA USE 1 ½" THICK FIBERGLASS PIPE INSULATION WITH VAPOR PROOF JACKET, TAPED JOINTS AND PVC FITTING COVERS. EXPOSED PIPING IN FINISHED AREAS OR AS NOTED SHALL BE COVERED WITH PVC PIPE COVER AND PAINTED. (1) - COAT PRIMER, (2) COATS - PAINT. COLOR AS DIRECTED BY ARCHITECT											
— R —	—	—	DOMESTIC HOT WATER RECIRCULATION PIPING, COPPER TYPE "L" WITH LEADFREE SOLDER JOINTS ABOVE GRADE AND COPPER TYPE "K" FOR UNDERGROUND PIPING. NO JOINTS PERMITTED BELOW GRADE. INSULATE UNDERGROUND PIPING UP TO 1 ½" DIA WITH 1" AND PIPING ABOVE 1 ½" DIA USE 1 ½" THICK ELASTOMERIC INSULATION. INSULATE ALL ABOVE GROUND PIPING UP TO 1 ½" DIA WITH 1" AND PIPING ABOVE 1 ½" DIA USE 1 ½" THICK FIBERGLASS PIPE INSULATION WITH VAPOR PROOF JACKET, TAPED JOINTS AND PVC FITTING COVERS. EXPOSED PIPING IN FINISHED AREAS OR AS NOTED SHALL BE COVERED WITH PVC PIPE COVER AND PAINTED. (1) - COAT PRIMER, (2) COATS - PAINT. COLOR AS DIRECTED BY ARCHITECT											
— CW —	—	—	DOMESTIC WATER SERVICE PIPING, COPPER TYPE "L" WITH LEADFREE SOLDER JOINTS ABOVE GRADE AND COPPER TYPE "K" FOR UNDERGROUND PIPING DUCTILE IRON PIPE, ANKA CUI, FITTINGS, DUCTILE IRON, STANDARD THICKNESS, JOINTS, ANKA CUI, RUBBER GASKET WITH ¼ INCH DIAMETER RODS, INSULATE ALL ABOVE GROUND PIPING WITH ½" THICK FIBERGLASS PIPE INSULATION WITH VAPOR PROOF JACKET, TAPED JOINTS AND PVC FITTING COVERS.											
— TF —	—	—	TRUCKFILL WATER PIPING, COPPER TYPE "L" WITH LEAD FREE SOLDER JOINTS ABOVE GRADE. INSULATE ALL PIPING WITH ½" THICK FIBERGLASS PIPE INSULATION WITH VAPOR PROOF JACKET, TAPED JOINTS AND PVC FITTING COVERS, EXPOSED PIPING IN FINISHED AREAS OR AS NOTED SHALL BE COVERED WITH PVC PIPE COVER AND PAINTED. (1) - COAT PRIMER, (2) COATS - PAINT. COLOR AS DIRECTED BY ARCHITECT											
— CA —	—	—	COMPRESSED AIR PIPING, SCHEDULE 40 GALVANIZED STEEL WITH SCREWED JOINTS AND FITTINGS A120 STANDARD WEIGHT.											
— CA —	—	—	COMPRESSED AIR QUICK DISCONNECT FITTING. COORDINATE EXACT SIZE AND TYPE WITH FIRE DEPARTMENT.											
— TF —	—	—	TRUCK FILL 2" BALL VALVE WITH 1 ½" HOSE ADAPTER FITTING, CAP & CHAIN AS APPROVED BY FIRE DEPARTMENT PRIOR TO INSTALLATION. FURNISH & INSTALL WALL HOSE RACK TO HOLD MAXIMUM 75 FEET OF 1 ½" HOSE ADJACENT TO TRUCK FILL. EXACT HEIGHT AND LOCATION AS APPROVED BY FIRE DEPARTMENT PRIOR TO INSTALLATION.											
— SA —	NIBCO	—	BALL VALVE, BRONZE BODY, FULL PORT.											
— U —	—	—	TRAP											
HR-1	HANNY	818-25-26B	WATER HOSE REEL, HEAVY-DUTY SERIES 800, ¾" ID HOSE - 70 FEET LENGTH FLEX TROL, 1000 PSI, ¾" HOSE CONNECTION WITH MOUNTING BRACKETS, HOSE INLET KIT, HOSE STOP KIT AND NOZZLE (AS SELECTED BY FIRE COMPANY). EXACT LOCATION AND MOUNTING HEIGHT AS DIRECTED BY ARCHITECT.											
	T4S BRASS	MY-0711-12N-BV	WASHDOWN STATION ¾" HOT & COLD WITH CHECKVALVES, BALL VALVES, STAINLESS STEEL HOSE RACK, ¾" OUTLET HOSE CONNECTION.											
CAHR-1	HANNY	NT16-19-20-10-5J	COMPRESSED AIR HOSE REEL, HEAVY-DUTY SERIES NT100, ¾" ID HOSE - 50 FEET LENGTH, 3000 PSI, ¾" HOSE CONNECTION WITH MOUNTING BRACKETS, HOSE INLET KIT, HOSE STOP KIT AND QUICK DISCONNECT AIR FITTING (AS SELECTED BY FIRE COMPANY). EXACT LOCATION AND MOUNTING HEIGHT AS DIRECTED BY ARCHITECT.											
WC-1	AMERICAN STANDARD	3043.001	MADERA RIGHT HEIGHT EL-128 ELONGATED FLUSH VALVE TOILET. VITREOUS CHINA, DIRECT-FED SIPHON JET, ⅝" TOP SPUD INLET, OPEN FRONT SEAT WITH COVER. COLOR AS DIRECTED BY ARCHITECT. INSTALL IN ACCORDANCE WITH ANSI A117.1 AND ADA STANDARDS FOR HANDICAP ACCESSIBILITY. COLOR BY ARCHITECT.											
	SLOAN	111-128 ES-5	EXPOSED SENSOR OPERATED WATER CLOSET FLUSHOMETER, LOW CONSUMPTION (1.28 GPF) WITH EL-154 TRANSFORMER (120 VAC / 24 VAC).											
UR-1	AMERICAN STANDARD	6509.001	WASHBROOK URINAL CONSTRUCTED OF VITREOUS CHINA, TOP SPUD LOW CONSUMPTION (0.5 GPF). COLOR AS DIRECTED BY ARCHITECT.											
	SLOAN	186-0.5 ES-5	EXPOSED SENSOR OPERATED URINAL FLUSHOMETER, LOW CONSUMPTION (0.5 GPF) WITH EL-154 TRANSFORMER (120 VAC / 24 VAC).											
L-1	AMERICAN STANDARD	0355.012	LUCERNE WALL HUNG LAVATORY VITREOUS CHINA, 4" CENTERS FAUCET HOLES, FLOOR MOUNTED CONCEALED ARM SUPPORT CARRIER, CHROME OFFSET GRID DRAIN WITH OVERFLOW AND IT GAUGE TRAP, CHROME WATER SUPPLIES AND KEY OPERATED STOPS, IPS TRUEBRO LAV GUARD INSULATION KIT. INSTALL IN ACCORDANCE WITH ANSI A117.1 AND ADA STANDARDS FOR HANDICAP ACCESSIBILITY.											
	ZURN	Z1231	CONCEALED ARM SUPPORT CARRIER FOR WALL LAVATORIES.											
L-2	AMERICAN STANDARD	0476.028	AQUALYN COUNTERTOP LAVATORY VITREOUS CHINA, 4" CENTERS FAUCET HOLES, CHROME OFFSET GRID DRAIN WITH OVERFLOW AND IT GAUGE TRAP, CHROME WATER SUPPLIES AND KEY OPERATED STOPS, IPS TRUEBRO LAV GUARD INSULATION KIT. INSTALL IN ACCORDANCE WITH ANSI A117.1 AND ADA STANDARDS FOR HANDICAP ACCESSIBILITY.											
	SLOAN	ETF-600	OPTIMA ELECTRONIC HAND WASHING FAUCET 0.5 GPM VANDAL RESISTANT SPRAY HEAD. SENSOR ACTIVATED WITH 4" DECK PLATE, SOLID BRASS SOLENOID, PLUG-IN TRANSFORMER 120 VAC / 12 VDC. THERMOSTATIC MIXING VALVE, KEY OPERATED STOPS, IT GAUGE P-TRAP W/CLEANOUT AND GRID STRAINER. INSTALL IN ACCORDANCE WITH ANSI A117.1 AND ADA STANDARDS FOR HANDICAP ACCESSIBILITY - 120 VAC/24 VAC.											
SH-1	SYMMONS	SAFETYMIX I-HIT-F5	SHOWER VALVE, PRESSURE BALANCING, LEVERTROL LEVER DIVERTER, SUPER SHOWER HEAD, F5B HAND SPRAY UNIT WITH 60" FLEXIBLE HOSE, 30" SLIDE BAR, WALL CONNECTION, IN-LINE VACUUM BREAKER, INTEGRAL STOPS, 2.0 GPM RESTRICTOR, LEVER HANDLE CONTROL, ADA COMPLIANT. INSTALL IN ACCORDANCE WITH ANSI A117.1 AND ADA STANDARDS FOR HANDICAP ACCESSIBILITY. SEE ARCHITECTURAL DRAWINGS											
	ZURN	415	FLOOR DRAIN, DURA COATED, 5" x 5" SQUARE NICKEL BRONZE TYPE "S" STRAINER, 2" OUTLET.											
FD-1	ZURN	415	FLOOR DRAIN, DURA COATED, 6" x 6" SQUARE NICKEL BRONZE TYPE "S" STRAINER, 3" OUTLET.											
	PROSET	TRAP GUARD	TRAP GUARD FOR EMERGENCY FLOOR											
TD-1	JAY R SMITH	2710 SERIES	TRENCH DRAIN, DUGO CAST IRON COATED, (12" x 12") 3 - SECTIONS, END PLATES WITH HEAVY DUTY DUCTILE IRON GRATE - M. EPOXY COATED COLOR AS DIRECTED BY ARCHITECT. SEDIMENT BUCKET. 4" OUTLET.											
EW-1	GUARDIAN	61814	WALL MOUNT EMERGENCY EYE WASH. STAINLESS STEEL BOWL, TWO 65-PLUS SPRAY HEADS WITH STAINLESS STEEL BOWL COVER (BC), ½" NPT SUPPLY AND ⅝" NPT DRAIN WITH ELBOW AND PIPE EXTENDED 6" ABOVE APPARATUS ROOM FLOOR. FC20 REGULATES EACH SPRAY HEAD FLOW TO 1.6 GPM. INSTALL IN ACCORDANCE WITH ANSI A117.1 AND ADA STANDARDS FOR HANDICAP ACCESSIBILITY.											
		6360OLF TMV	EMERGENCY EYE WASH MIXING VALVE, FACTORY SET TO 85°F, HIGH TEMPERATURE LIMIT SET TO 90°F, 3.5 GPM @ 15 PSI DROP. MIXING VALVE WILL CLOSE DOWN ON FAILURE OF COLD WATER. SPECIAL INTERNAL COLD WATER BYPASS. COMPLIANCE WITH ANSI Z 358.1											

PLUMBING EQUIPMENT SCHEDULE CONT'			
SYMBOL	MANUFACTURER	CATALOG #	DESCRIPTION
SS-1	AMERICAN STANDARD	7695.000	AKRON SERVICE SINK, ENAMELED CAST IRON, WITH WALL HANGER, RIM GUARD, 3" CAST IRON P-TRAP AND CLEANOUT. COLOR AS DIRECTED BY ARCHITECT.
		8344.112	EXPOSED YOKE WALL MOUNTED UTILITY FAUCET WITH METAL HANDLES, VACUUM BREAKER, TOP BRACE AND INTEGRAL STOPS.
DF-1	ELKAY	E4MM21TC	TWO LEVEL SOFT SIDES HEAVY DUTY STAINLESS STEEL DRINKING FOUNTAIN WITH WALL PLATE, INTEGRAL P-TRAP, BOTTOM PLATES. INSTALL IN ACCORDANCE WITH ANSI A117.1 AND ADA STANDARDS FOR HANDICAP ACCESSIBILITY. FIXTURE AS SELECTED BY OWNER
NFHB-1	WOODFORD	67	3/4" WALL HYDRANT NON-FREEZE, SELF-DRAINING, VANDAL RESISTANT INTEGRAL VACUUM BREAKER, KEY OPERATED, CHROME FINISH.
C.O.	—	—	CLEANOUT
F.C.O.	—	—	FLOOR CLEANOUT PEDESTRIAN TRAFFIC SEE DETAIL #7 ON DRAWING (P500)
F.C.O.-1	—	—	FLOOR CLEANOUT VEHICLE/TRUCK TRAFFIC (SEE DETAIL #4 ON DRAWING (P500)
W.C.O.	—	—	WALL CLEANOUT SEE DETAIL #5 ON DRAWING (P500)
EX.C.O.	—	—	EXTERIOR CLEANOUT SEE DETAIL #3 ON DRAWING (P500)
TPU-1	MIFAB	M1-300-625 -120	ELECTRONIC TRAP SEAL PRIMER SYSTEM WITH ENCLOSURE, AIR GAP, SOLENOID VALVE, ADJUSTABLE TIMER AND MI-DU DISTRIBUTION UNIT (M1-D1-625) WITH (5) ¾" PIPE CONNECTIONS, CAP UNUSED PIPE CONNECTIONS - 120V/1. MOUNT UNIT AS DIRECTED IN FIELD BY ARCHITECT
TP-1	MIFAB	M-500, MI-DU MI-GAP	TRAP SEAL PRIMER WITH DISTRIBUTION UNIT TO SERVE UP TO FOUR (4) FLOOR DRAINS AND AIR GAP FITTING (MI-GAP).
WB-1	OATEY	12K	WALL BOX WITH BRASS VALVE & COPPER CONNECTION.
EW-1	GUARDIAN	61814	WALL MOUNT EMERGENCY EYE WASH. STAINLESS STEEL BOWL, TWO 65-PLUS SPRAY HEADS WITH STAINLESS STEEL BOWL COVER (BC), ½" NPT SUPPLY AND ⅝" NPT DRAIN WITH ELBOW AND PIPE EXTENDED 6" ABOVE APPARATUS ROOM FLOOR. FC20 REGULATES EACH SPRAY HEAD FLOW TO 1.6 GPM. INSTALL IN ACCORDANCE WITH ANSI A117.1 AND ADA STANDARDS FOR HANDICAP ACCESSIBILITY.
		6360OLF TMV	EMERGENCY EYE WASH MIXING VALVE, FACTORY SET TO 85°F, HIGH TEMPERATURE LIMIT SET TO 90°F, 3.5 GPM @ 15 PSI DROP. MIXING VALVE WILL CLOSE DOWN ON FAILURE OF COLD WATER. SPECIAL INTERNAL COLD WATER BYPASS. COMPLIANCE WITH ANSI Z 358.1
WH-1	VISESSMANN	300 V EVIB-79	VITOCELL INDIRECT WATER HEATER, 79 GAL. STORAGE, RECOVERY: 236 GPH @ 90° RISE INPUT: 177 MBH @ 13.2 GPM (MIN). 144°F E.W.T.
ST-1	AMTROL	5T-12V	THERM-X-TROL DOMESTIC HOT WATER SYSTEM THERMAL EXPANSION TANK, MAXIMUM WORKING PRESSURE 150 (PSIG)
P-1	GRUNDFOS	UP 15-42B7	DOMESTIC HOT WATER RECIRCULATION PUMP, BRONZE BODY WITH AQUASTAT AND "UP" TIMER. 8 GPM @ 10 FEET OF HEAD 1/25 HP - 120V/1
ID-1	—	—	INDIRECT WASTE FUNNEL DRAIN PVC. 2" OUTLET.
	RECTORSEAL	97046	SURESEAL PLUS 2" DRAIN TRAP SEAL/CHECK VALVE.

No.	REVISION/SUBMISSION	DATE
Mechanical/Electrical/Plumbing Engineer		
<div><div>GERARD ASSOCIATES</div><div>CONSULTING ENGINEERS, D.P.C. 223 MAIN STREET GOSHEN NY 10924 TEL: (845) 291 1272 info@GerardAssociates.com www.GerardAssociates.com</div></div>		
GA21063		
Structural Engineer		
<div><div>SZEWCZAK ASSOCIATES</div><div>CONSULTING ENGINEERS 200 Fisher Drive Avon, Connecticut phone 860.677.4570 fax 860.676.0814</div></div>		
<div><div>Liscum McCormack VanVoorhis LLP</div><div>ARCHITECTURE 181 CHURCH STREET POUGHKEEPSIE, NEW YORK 12601 PLANNING INTERIORS PHONE 845-452-2268 FAX 845-452-3752</div></div>		
PROJECT NEW FIRE STATION FOR ROMBOUT FIRE DISTRICT - STATION 2 NYS ROUTE 52, FISHKILL, NY		
DRAWING PLUMBING: EQUIPMENT SCHEDULES		
SEAL	DRAWN BY RL/KC CHECKED BY JT/GH DRAWING NUMBER	PROJECT NUMBER 18142 DATE 11-30-22
P601		
FILE	H:\2021\GA21063	