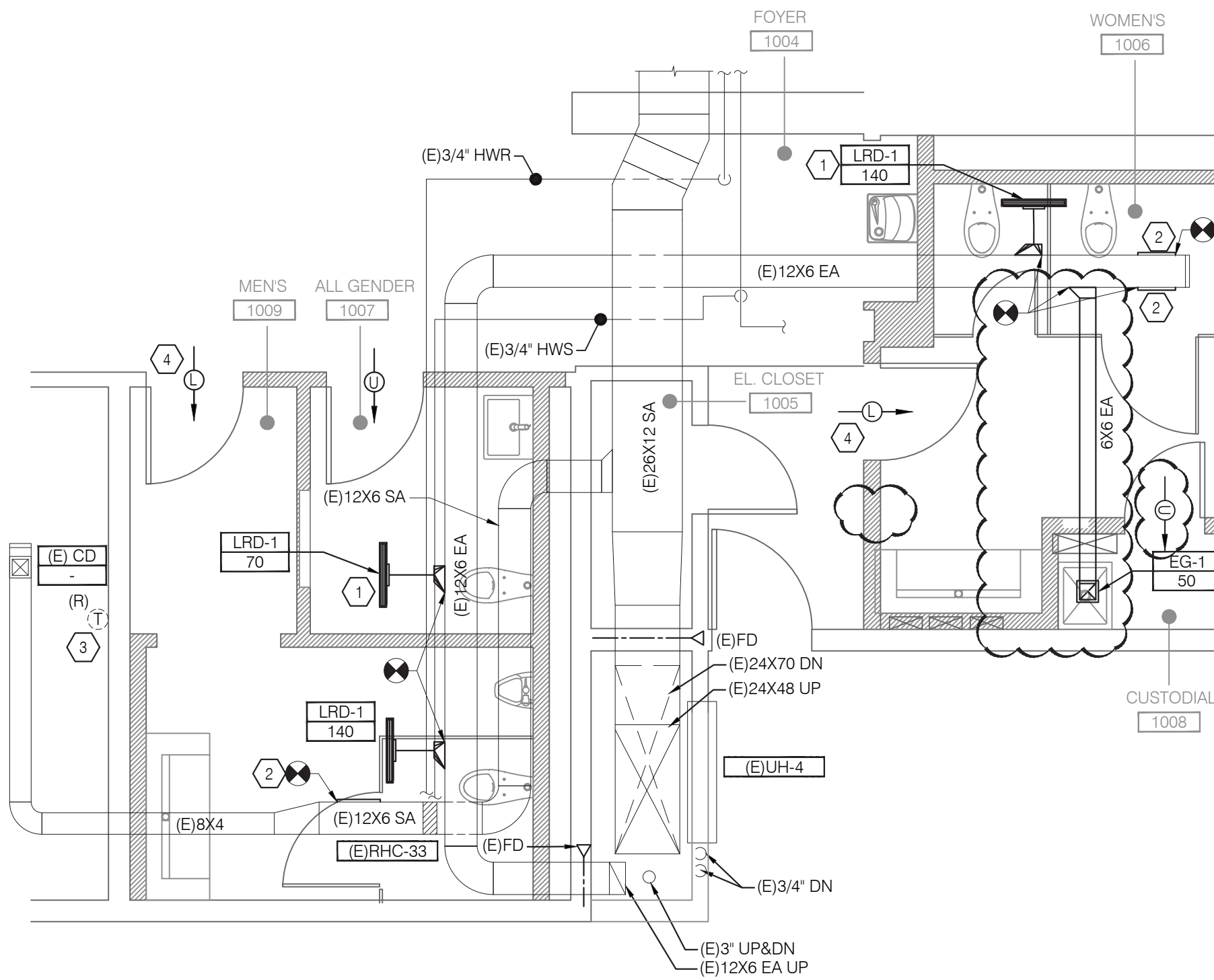


1 FIRST FLOOR PLAN - MECHANICAL REMOVALS
SCALE: 1/4" = 1'-0"



2 FIRST FLOOR PLAN - MECHANICAL NEW WORK
SCALE: 1/4" = 1'-0"

GENERAL NOTES

- EXISTING WORK SHOWN IS BASED ON AVAILABLE DOCUMENTATION AND SPOT CHECKS ON SURVEY. CONTRACTOR TO FIELD VERIFY EXISTING CONDITIONS AND COORDINATE WITH ENGINEER PRIOR TO PROCEEDING WITH WORK.
- THE DEMOLITION PLAN IS INTENDED TO PROVIDE THE CONTRACTOR WITH A GENERAL KNOWLEDGE OF THE EXISTING CONDITIONS WITHIN THE PROJECT AREA.
- CONTRACTOR SHALL SCHEDULE ALL WORK IN ACCORDANCE WITH OWNER'S REQUIREMENTS.
- CONTRACTOR TO FIELD COORDINATE ALL REMOVAL/STORAGE/DISPOSAL OF EXISTING EQUIPMENT WITH THE OWNER.
- CONTRACTOR TO COORDINATE WITH ARCHITECT AND STRUCTURAL ENGINEER TO PATCH AND REPAIR AREAS AFFECTED BY DEMOLITION WORK.

DEMOLITION KEY NOTES

- RELOCATE EXISTING THERMOSTAT. SEE NEW WORK PLAN ON DWG. 2/M-101.00 FOR EXACT LOCATION.
- EXISTING UNIT HEATER AND ASSOCIATED PIPING, VALVES, ENCLOSURE, SUPPORTS, CONTROLS ETC. TO REMAIN UNLESS OTHERWISE NOTED.
- REMOVE EXISTING SUPPLY/EXHAUST GRILLE AND ASSOCIATED DUCTWORK, ACCESSORIES, FITTINGS, HANGERS AND SUPPORTS FROM POINT OF DISCONNECTION SHOWN.
- REMOVE EXISTING TRANSFER GRILLE AND ASSOCIATED DUCTWORK, ACCESSORIES, FITTINGS, HANGERS AND SUPPORTS.

SHEET KEY NOTES

- PROVIDE EXHAUST LINEAR DIFFUSER AT THE LOCATION SHOWN AND COORDINATE WITH ARCH. RCP. (TYP.)
- ALL UNUSED DUCT OPENINGS SHALL BE CAP AND SEALED AIR TIGHT.
- PROVIDE A NEW CONTROL WIRING FROM THE RELOCATED THERMOSTAT TO EXISTING RHC-33
- PROVIDE DOOR LOUVER OF 0.4 SQ FT WITH 100% FREE AREA.

RESTROOM RENOVATION PURCHASE COLLEGE

STATE UNIVERSITY OF NEW YORK

735 Anderson Hill Rd.
Purchase, NY 10577

PHASE 3:

CAMPUS CENTER NORTH BUILDING
CAMPUS CENTER SOUTH BUILDING
PHYSICAL EDUCATION BUILDING
MAIN DINING HALL

Conditions

ALL IDEAS, DESIGNS, ARRANGEMENTS AND PLANS INDICATED OR REPRESENTED BY THIS DRAWING ARE OWNED BY, AND THE PROPERTY OF, RONNETTE RILEY ARCHITECT AND WERE CREATED, DEVELOPED, AND DEVELOPED FOR THE USE OF, AND IN CONNECTION WITH THE NONE OF SUCH IDEAS, DESIGNS, ARRANGEMENTS OR PLANS SHALL BE USED BY OR DISCLOSED TO ANY PERSON, FIRM OR CORPORATION FOR ANY PURPOSE WHATSOEVER WITHOUT THE WRITTEN PERMISSION OF RONNETTE RILEY ARCHITECT.

© Copyright Ronnette Riley Architect 2020

Ronnette Riley Architect

494 Eighth Avenue, 15th Floor
New York, NY 10001
T 212 594 4015
F 212 594 2868
www.ronnettenriley.com

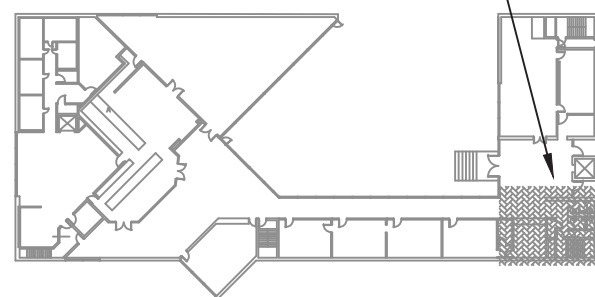
MEP Engineer

SETTY & Associates, Ltd
149 W 36th Street, 8th floor
New York, NY 10018
T 646 253 9000
F 646 224 8497

Rev	Date	Issue
	27 Feb 2023	Issue for Bid
	6/16/2023	PHASE 3 ADDENDUM #1

KEY PLAN

AREA OF WORK



Title CAMPUS CENTER NORTH - MECHANICAL PLANS

Date 06-15-2023
Project No. 1944
Drawing By AKV
CHK By BS
Scale AS NOTED

DOB Rev

M-102.00

