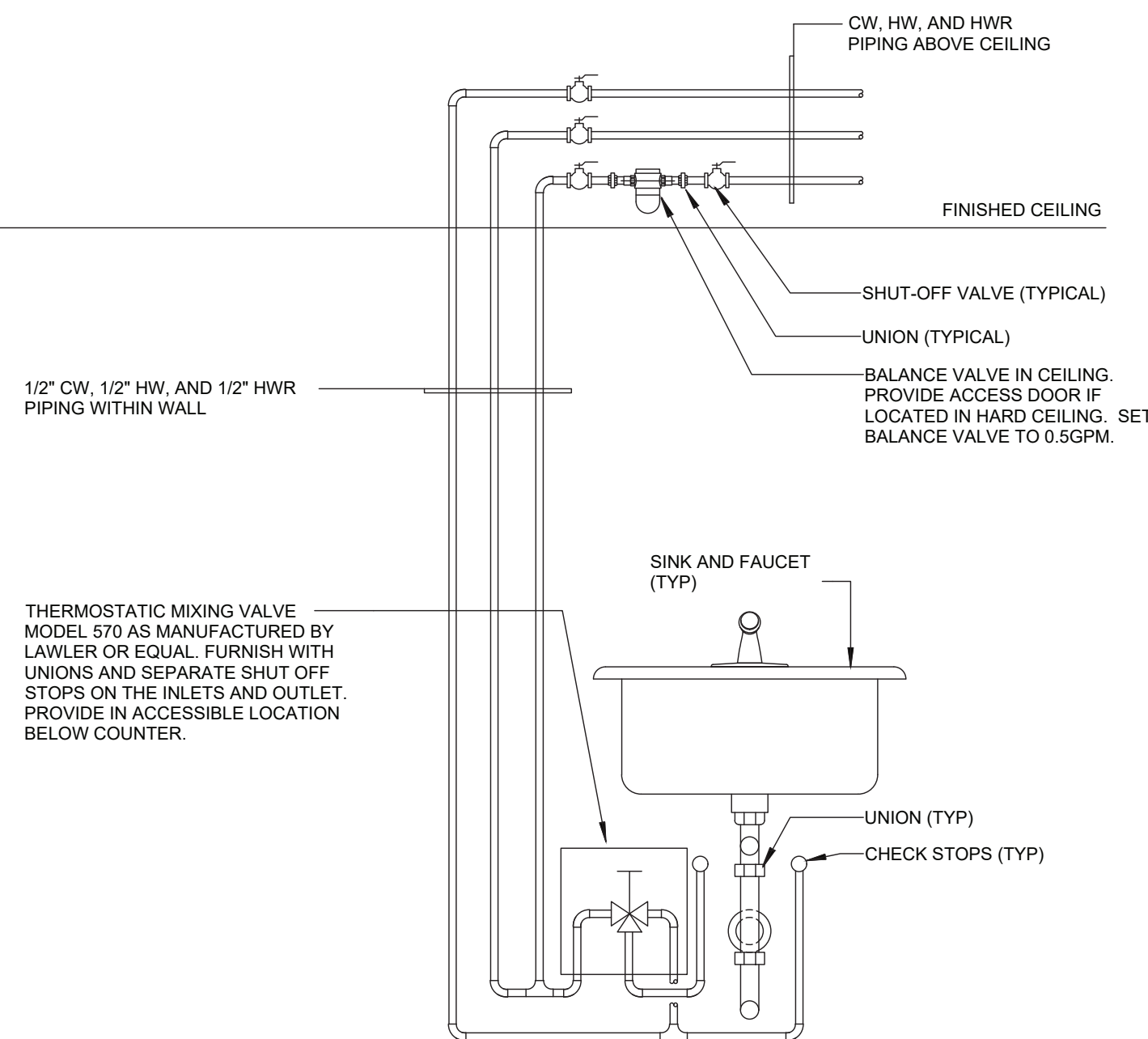


- NOTES:**
1. PROVIDE BALANCE VALVE ABOVE CEILING IN ACCESSIBLE LOCATION.
 2. EACH VALVING SHALL BE SERVED BY A MIXING VALVE INSTALLED BEHIND A LOCKABLE ACCESS DOOR LOCATED 15" TO 17" A.F.F.
 3. REFER TO FLOOR PLANS FOR PIPE SIZES AND TYPE/QUANTITY OF FIXTURES.
 4. THIS DETAIL IS INTENDED TO SHOW THE GENERAL INTENT OF THE HOT WATER CIRCULATION PIPING TO A FIXTURE. NOT ALL FIXTURE REQUIREMENTS, FITTINGS, AND DEVICES ARE SHOWN.

GROUP LAVATORY WITH SINGLE LEVER FAUCETS SUPPLY PIPING DETAIL

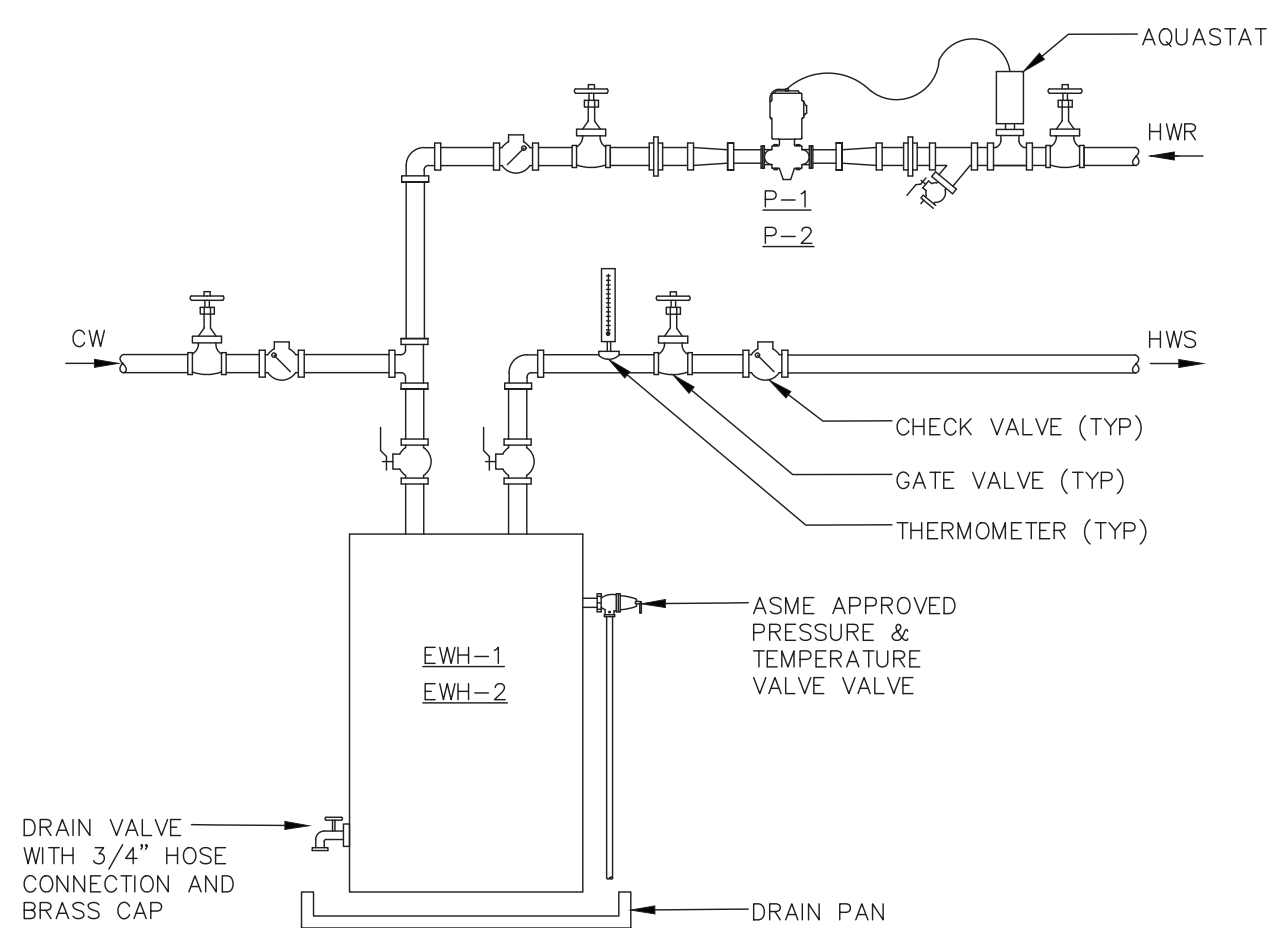
SCALE: NONE



- NOTES:**
1. PROVIDE BALANCE VALVE ABOVE CEILING IN ACCESSIBLE LOCATION.
 2. EACH SINK SHALL BE SERVED BY A MIXING VALVE INSTALLED IN CABINET BELOW.
 3. REFER TO FLOOR PLANS FOR PIPE SIZES AND TYPE/QUANTITY OF FIXTURES.
 4. THIS DETAIL IS INTENDED TO SHOW THE GENERAL INTENT OF THE HOT WATER CIRCULATION PIPING TO A FIXTURE. NOT ALL FIXTURE REQUIREMENTS, FITTINGS, AND DEVICES ARE SHOWN.

2. SINK WITH SINGLE LEVER FAUCET SUPPLY PIPING DETAIL

SCALE: NONE



ELECTRIC WATER HEATER CONNECTION DETAIL

SALE: NONE

FIXTURE	MANUFACTURER	MODEL	WASTE	VENT	C.W.	H.W.	GAS	REMARKS
L-1	KOHLER	K-2196-1-0	1 1/2"	1-1/4"	1/2"	1/2"	---	LAVATORY, DROP-IN SINK WITH KOHLER #K-7515-CP FITTINGS, JONES #D70-100 GRID DRAIN AND TRUEBRO #102-EZ COVERS
WC-1	KOHLER	K-3519-0	3"	2"	1/2"	---	---	WATER CLOSET; FLOOR MOUNTED, VITREOUS CHINA WITH KOHLER #K-4731-C-0 SEAT
U-1	KOHLER	K-5016-ET-0	2"	1 1/2"	3/4"	---	---	URINAL; WALL HUNG WITH CARRIER AND SLOAN #G2 8186-0.5 FLUSH VALVE
S-1	STERLING	14631-3-NA	1 1/2"	1 1/4"	1/2"	1/2"	---	SINK; DROP-IN STAINLESS STEEL, 3 HOLE WITH KOHLER #K-10433-CP FAUCET AND #SS-112 STRAINER
S-2 &	STERLING	14631-4-NA	1 1/2"	1 1/4"	1/2"	1/2"	---	SINK; DROP-IN STAINLESS STEEL, 4 HOLE WITH KOHLER #K-10433-CP FAUCET AND #SS-112 STRAINER
WD-1 &	INSINKERATOR	F-HC1100	---	---	1/4"	1/4"	---	HOT & COOL WATER DISPENSER; MOUNT ON S-2. EQUIP WITH SPECIFIED HWI. ADJUSTABLE TEMPERATURE FROM 160F TO 210F AND INSTANT SELF-CLOSING HOT VALVE.
HWT	INSINKERATOR	HWT-F1000S	---	---	1/2"	1/2"	---	ELECTRIC WATER HEATER; 2/3 GALLON, 115V AND FILTRATION SYSTEM FOR USE WITH WD-1. MOUNT BELOW COUNTER.
EW-C-1	ELKAY	EZW5M8K	1-1/2"	1-1/4	1/2"	---	---	BOTTLE FILLING STATION; IN-WALL MOUNT, 115V ELECTRIC, REFRIGERATED CHILLING CAPACITY OF 8.0GPH.
JS-1	FIAT	MSB-2424	3"	2"	1/2"	1/2"	---	JANITOR SINK; 24"x24" MOLDED STONE BASIN WITH T&B #B-0665-BSTR FITTINGS, DOME STRAINER, P-TRAP AND VACUUM BREAKER
FD-1 &	JOSAM	30000 - A SERIES	4"	2"	---	---	---	FLOOR DRAIN; PROVIDE FIXTURE OR CIRCUIT VENTING AS REQUIRED. PROVIDE WITH SPECIFIED FG.
TG	PROVENT SYSTEMS	TRAPGUARD TG34IP	---	---	---	---	---	TRAP GUARD; 3" PVC MATERIAL. OPEN ON TOP WITH CURL CLOSURE AT BOTTOM. CLOSURES & RETURNS TO MOLDED SHAPE AFTER WASTE WATER DISCHARGE.

ELECTRIC WATER HEATER SCHEDULE										
SYMBOL	MANUFACTURER/ MODEL NUMBER	LOCATION	WATER VOLUME (GAL)	DEGREE, RISE (°)	1ST HOUR (GPH)	CONTINUOUS (GPH)	ELECTRICAL			REMARKS
							KW	VOLTAGE	PH	
EWH-1	AO SMITH / DEL-10	JANITOR CLOSET	10	90	27	20	4.5	208	1	1,2,3
EWH-2	AO SMITH / DEL-10	COFFEE STATION	10	90	27	20	4.5	208	1	1,2,3

REMARKS:

1. PROVIDE WITH SINGLE POINT ELECTRICAL CONNECTION
2. PROVIDE MODEL FLOODSAFE LFWDS LEAK DETECTION SHUT-OFF VALVES AS MANUFACTURED BY WATTS.
3. WATER HEATER TO SUPPLY WATER AT 110°F

PUMP SCHEDULE											
SYMBOL	MANUFACTURER/MODEL	LOCATION	SERVICE	TYPE	GPM	HEAD (FT)	ELECTRICAL			REMARKS	
							HP	PH	VOLT		RPM
P=1	TACO/006 BC4	JANITOR CLOSET	110 °F DOMESTIC HOT WATER RECIRC.	INLINE	3.0	10.0	1/40	1	120	3250	1
P=2	TACO/006 BC4	COFFEE STATION	110 °F DOMESTIC HOT WATER RECIRC.	INLINE	3.0	10.0	1/40	1	120	3250	1

1. PUMP TO BE CONTROLLED BY AQUASTAT ON HW SUPPLY. REFER TO PUMP DETAIL.

MARCHETTI CONSULTING ENGINEERS
25 HIGH RIDGE ROAD
POUND RIDGE, NY 10576

PHONE: (914) 764-9011
FAX: (914) 764-9012

EMAIL: chrisdad57@sbcglobal.net



THIS DRAWING IS THE PROPERTY
OF CLARIS DESIGN BUILD IT HAS
BEEN PREPARED SPECIFICALLY
FOR THE OWNER FOR THIS
PROJECT AT THIS SITE, AND IS NOT
TO BE USED FOR ANY OTHER
PURPOSE, LOCATION, OR OWNER
WITHOUT WRITTEN CONSENT OF
CLARIS

THE PREMIER COLLECTION

251 EAST MAIN STREET
ELMSFORD, NY. 10523

[illegible]

PLUMBING DETAILS AND SCHEDULES

THE PREMIER
COLLECTION

Project Number	23-12
Date	06/07/23
Drawn By	AK
Checked By	PM
Scale	As Noted

P-500