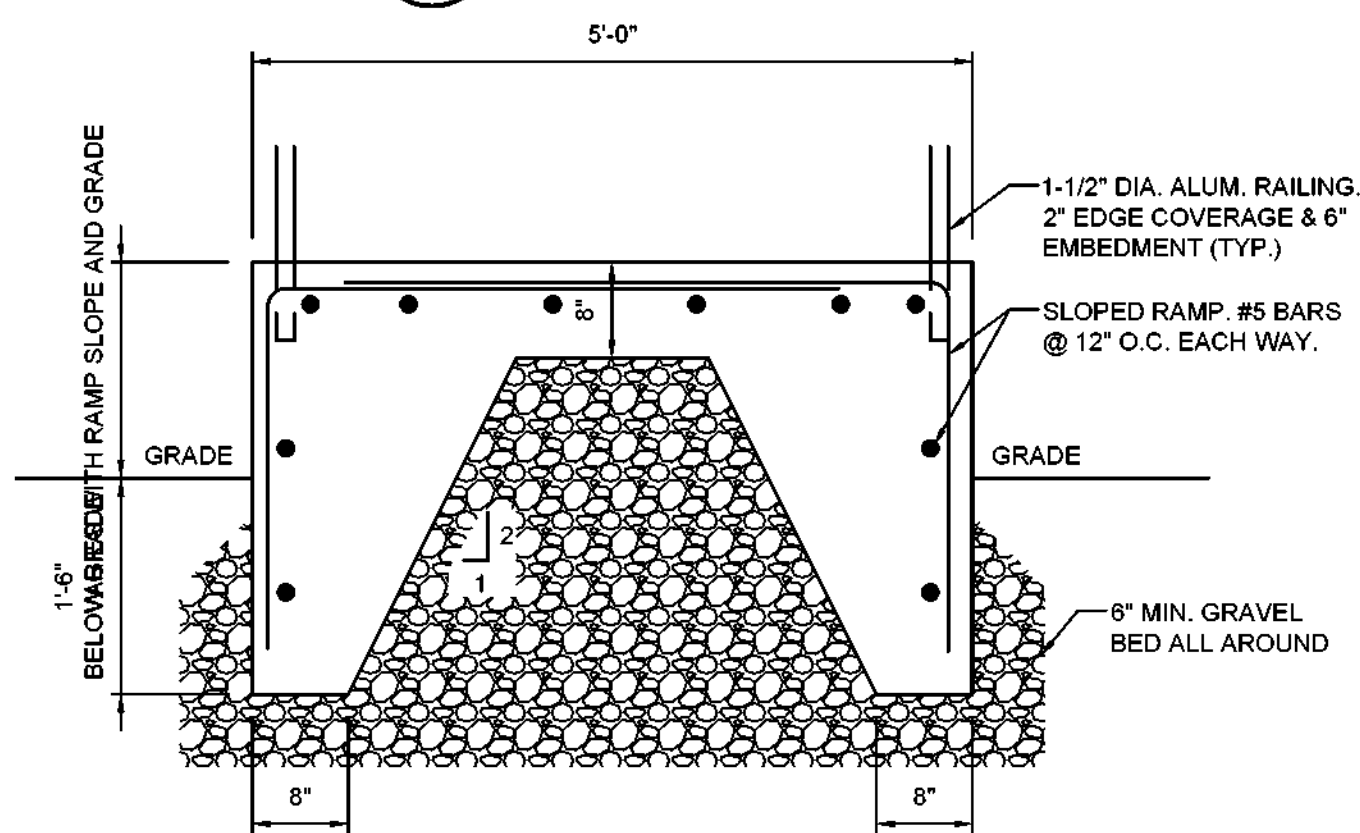
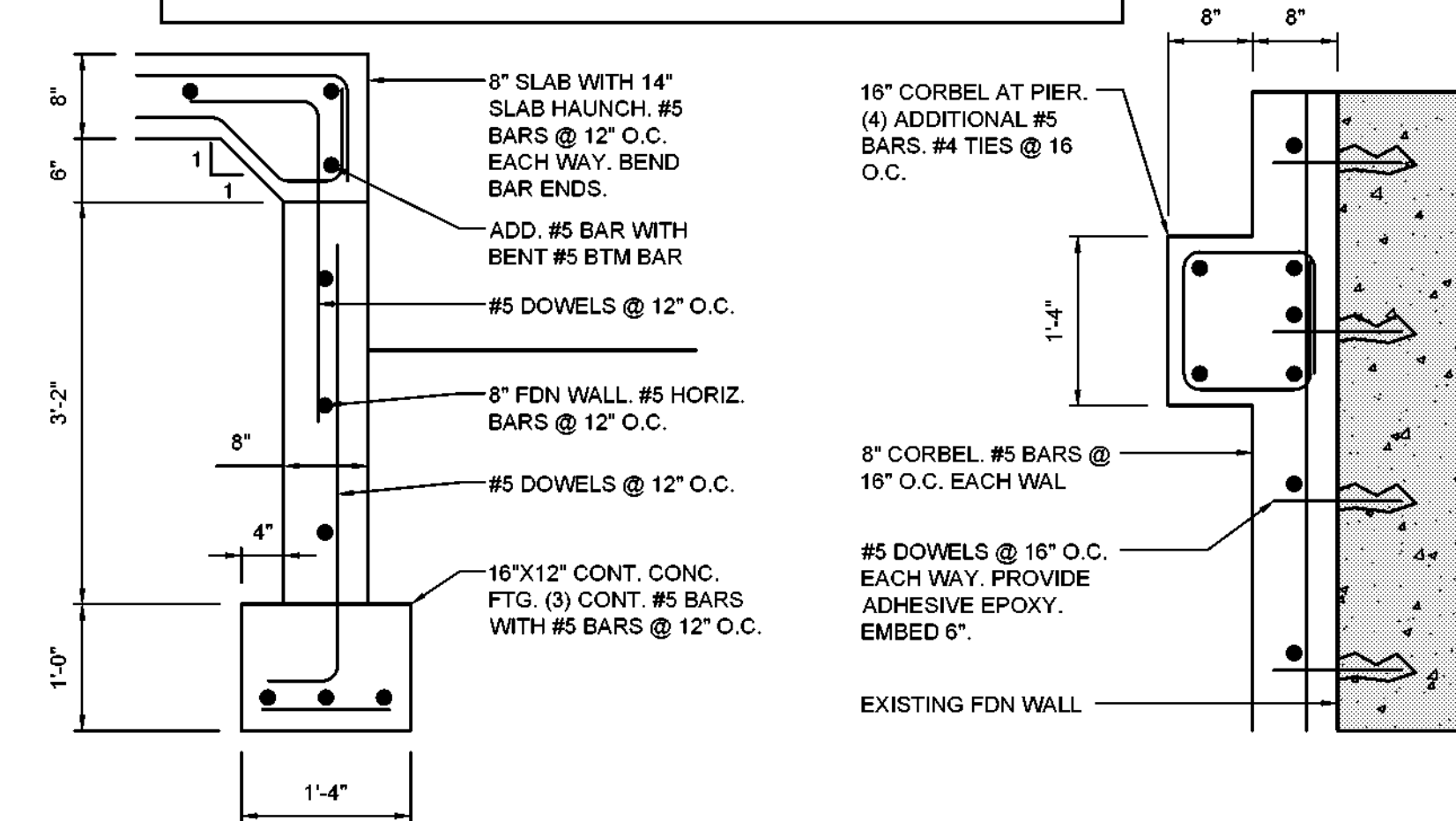


1 CONCRETE LANDING DETAIL



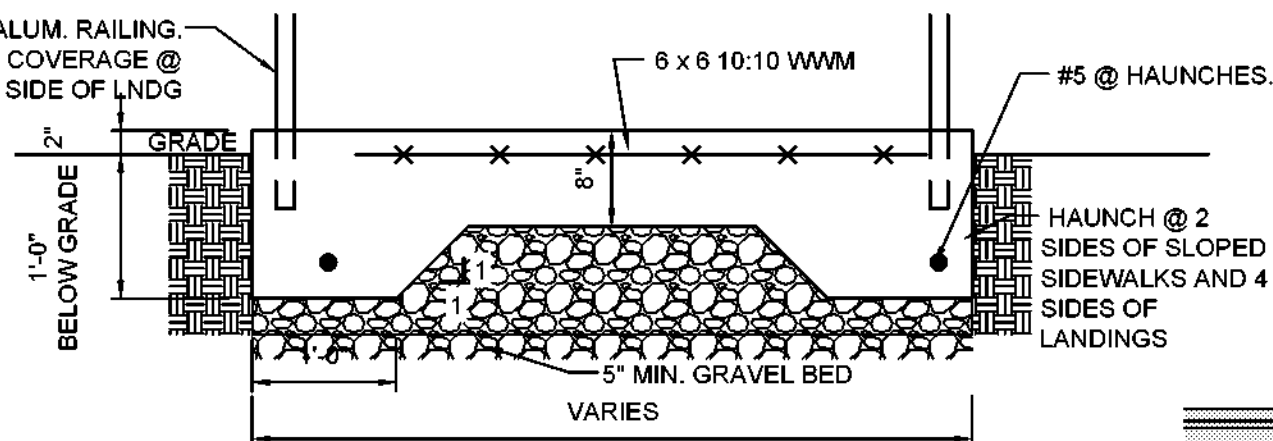
2 CONCRETE RAMP DETAIL

NOTE:
IF EXISTING FILL NEEDS TO BE REMOVED AND REPLACED, IT SHOULD BE REPLACED WITH A SUPERVISED CONTROLLED FILL CONSISTING OF A CLEAN INORGANIC MATERIAL, PLACED IN LIFTS NOT TO EXCEED 12 INCHES IN DEPTH, AND BE COMPACTED, UNDER INDEPENDENT SUPERVISION, TO A MINIMUM OF 95% OF THE MODIFIED PROCTOR MAXIMUM DRY DENSITY AT OPTIMUM MOISTURE CONTENT PER ASTM D 1557. SOILS TO BE USED FOR CONTROLLED FILL SHALL HAVE LESS THAN 10% PASSING A #200 SIEVE WITH NO PARTICLE SIZE LARGER THAN 2 INCHES. DESIGN BEARING CAPACITY OF CONTROLLED FILL PLACED AS DESCRIBED ABOVE CAN BE TAKEN AS 2 TONS PER SQUARE FOOT.



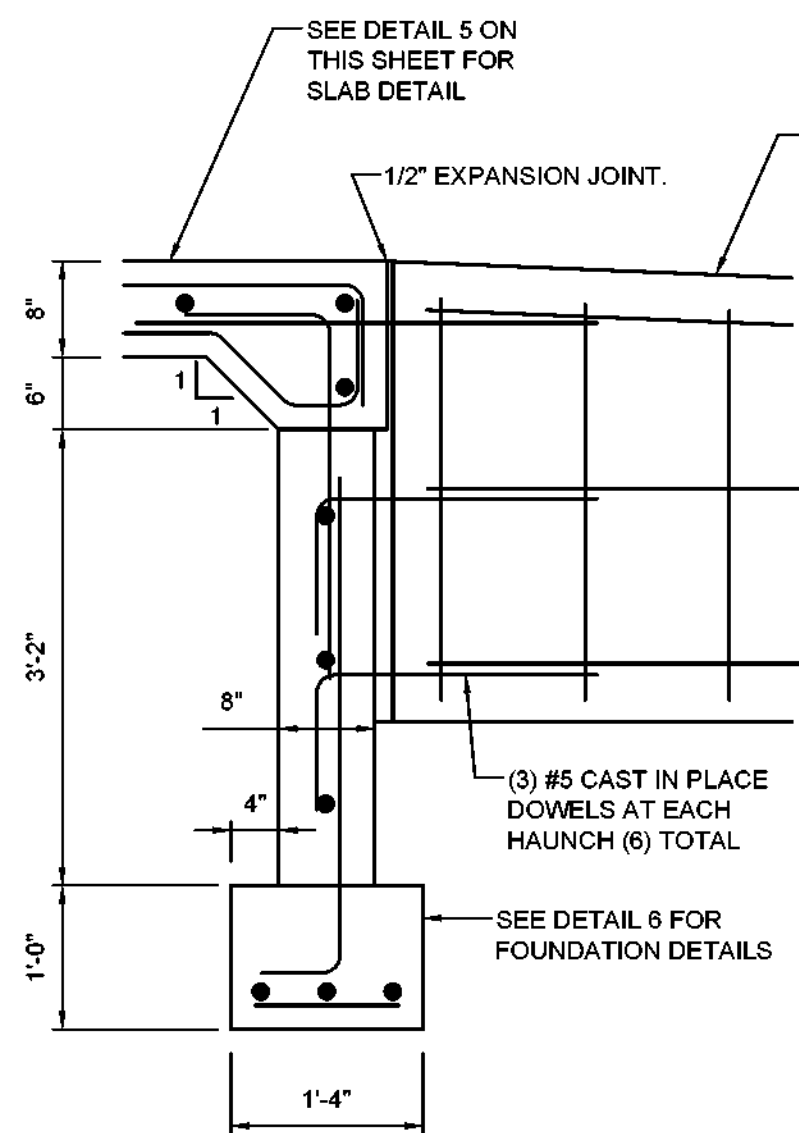
5 TYPICAL WALL DETAIL

6 CORBEL PIER - PLAN VIEW



10 SLOPED WALKWAY & LANDINGS DETAIL

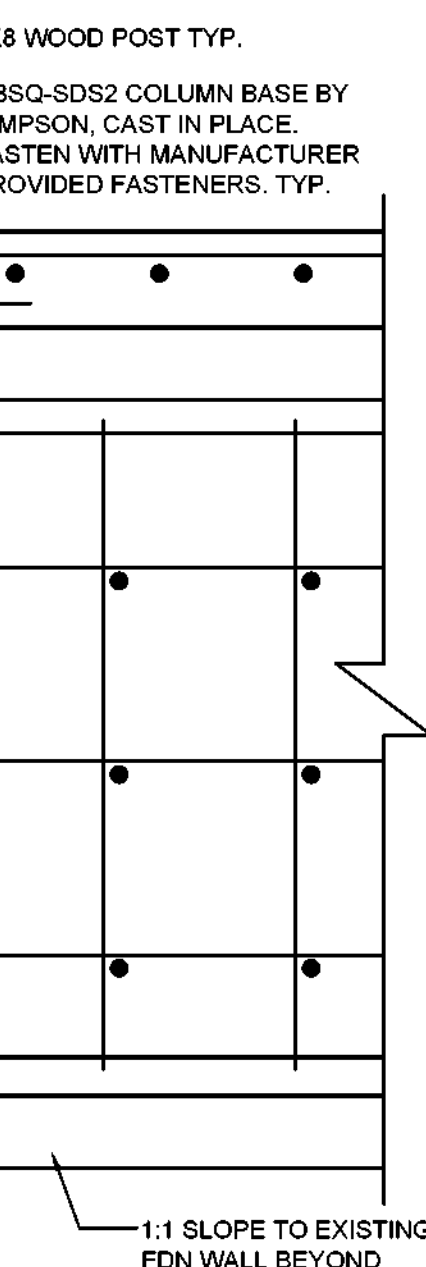
NOTE: ALL LANDINGS TO BE PITCHED TO DRAIN



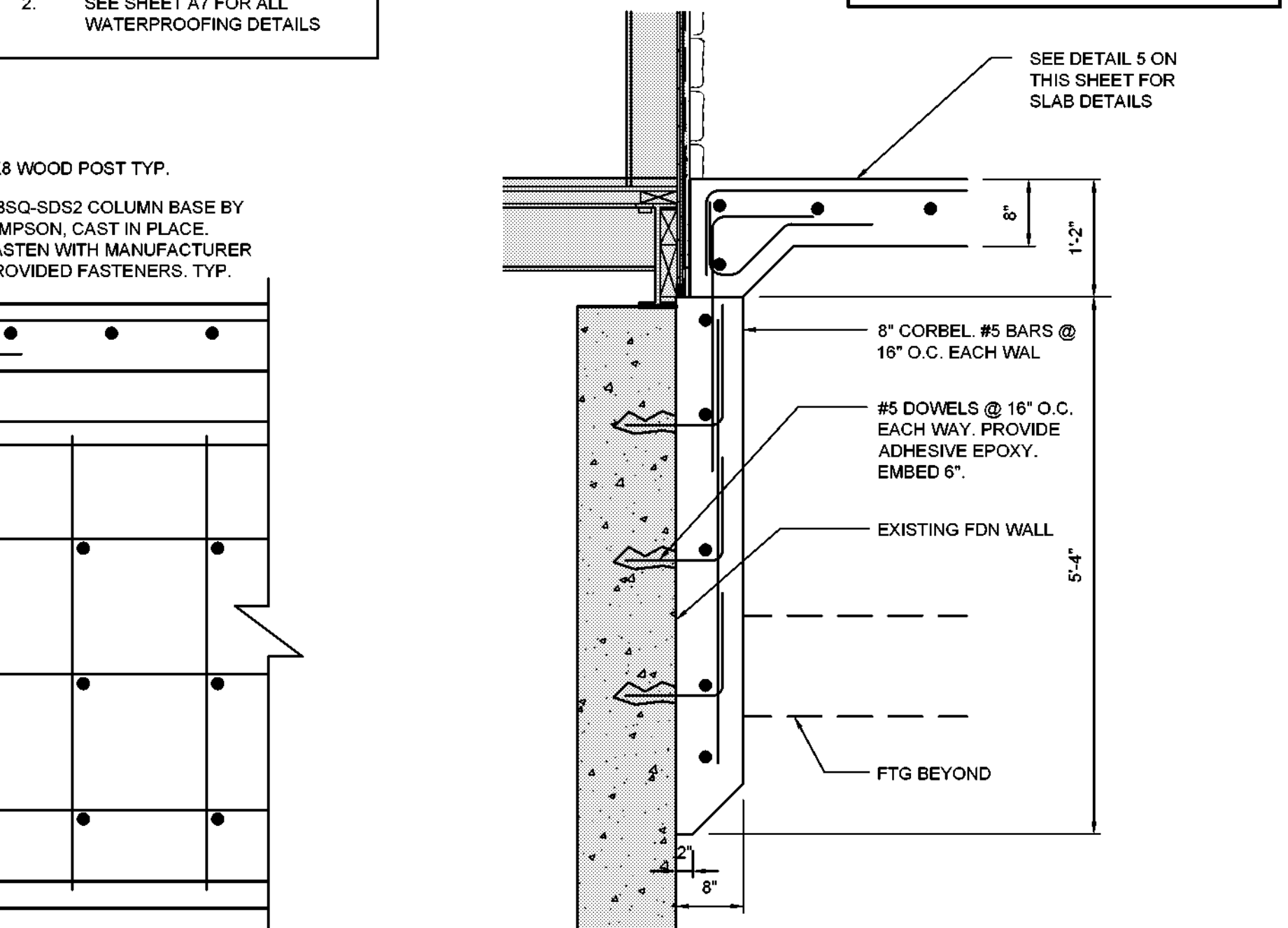
3 CONCRETE RAMP DETAIL

GENERAL NOTES:

- ALL DIMENSIONS ARE NOMINAL AND TO BE VERIFIED IN FIELD.
- SEE SHEET A7 FOR ALL WATERPROOFING DETAILS



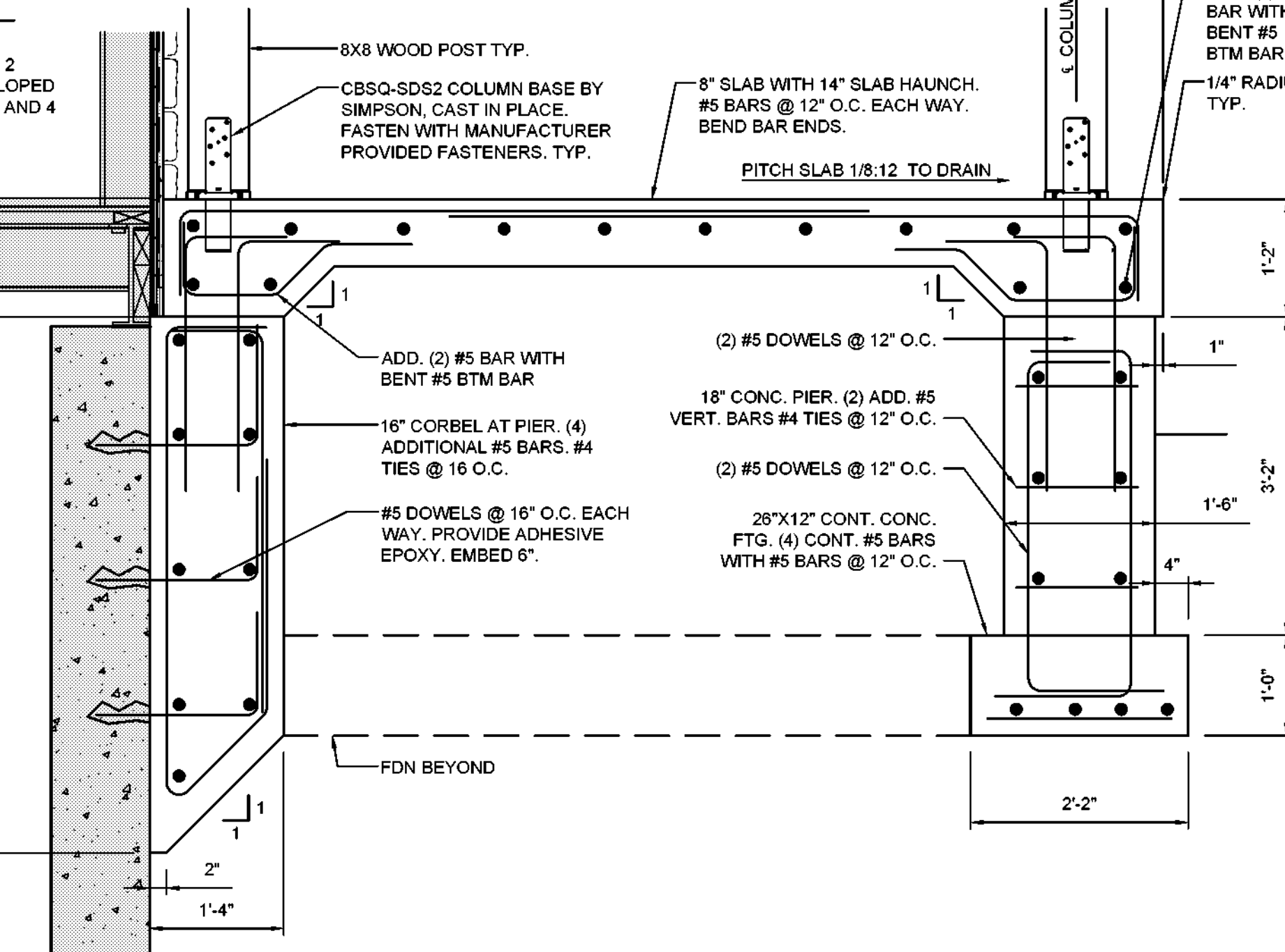
7 FOUNDATION DETAIL AT CORNER



8 TYP. CORBEL DETAIL

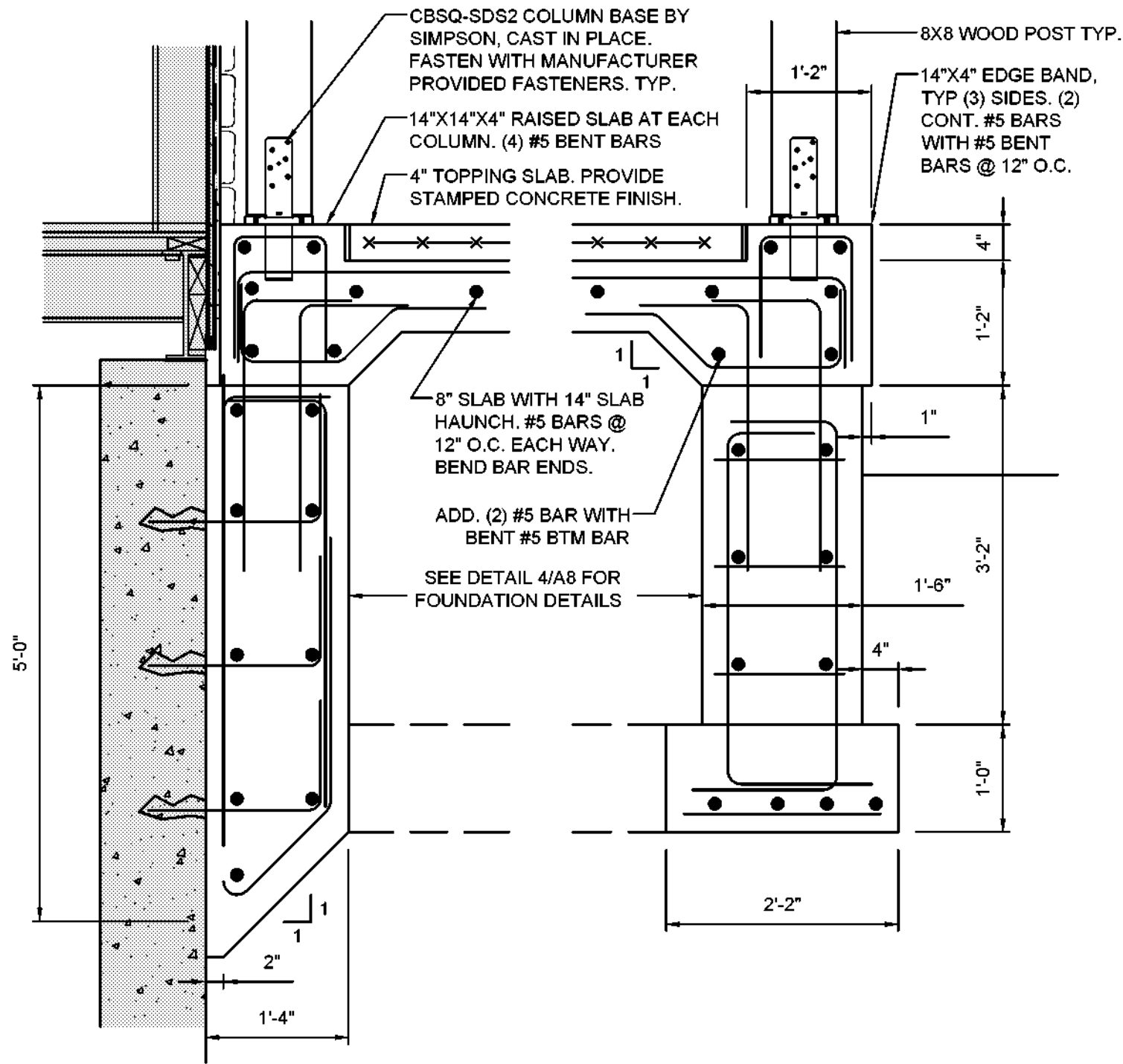
SCALE: 3/4" = 1'-0"

SEE SECTION 5/A6 FOR PORCH FOUNDATION, CORBEL AND PIER WATERPROOFING AND INSULATION SCOPE



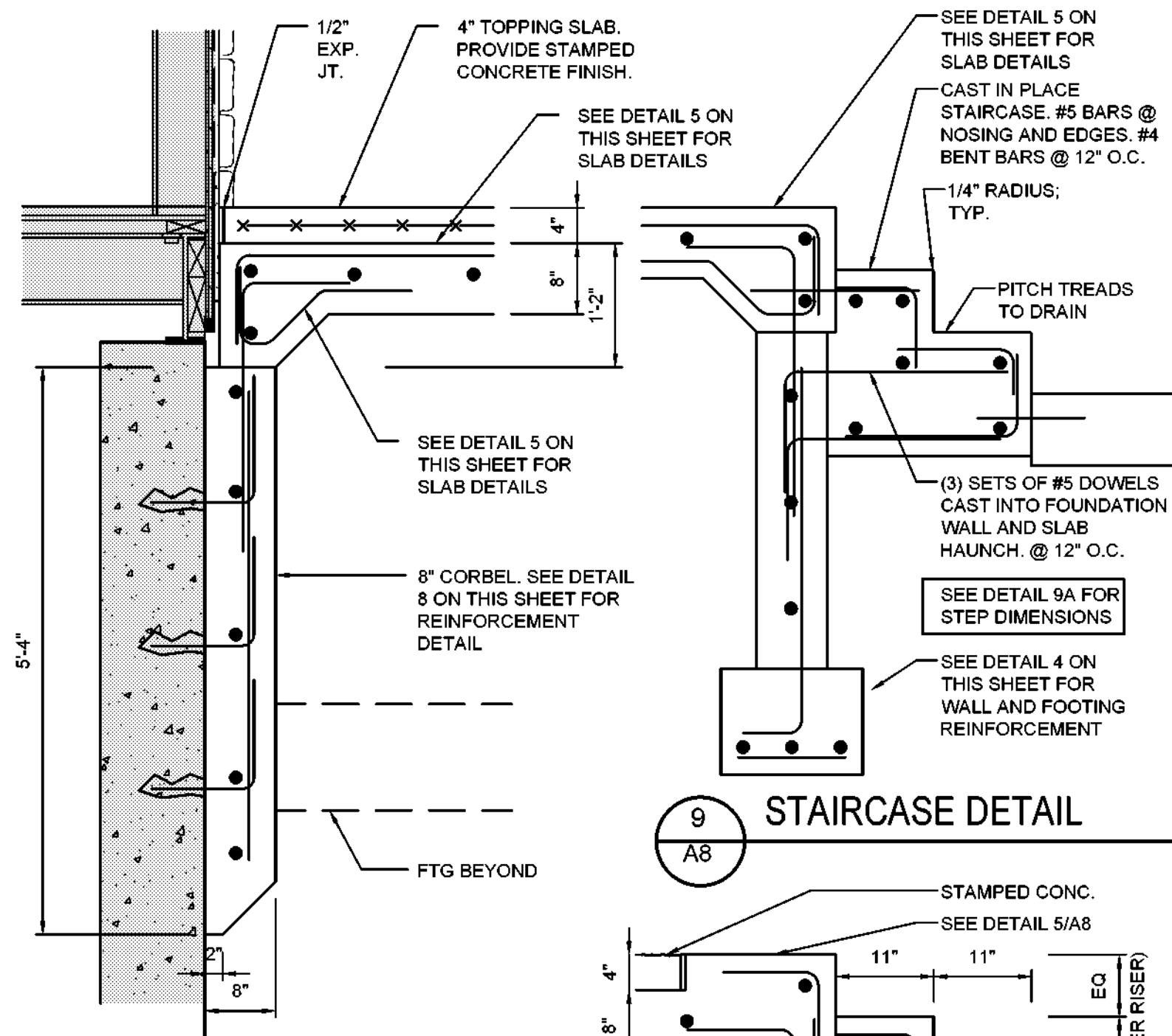
4 SECTION DETAIL THROUGH PIERS

SEE SECTION 5/A6 FOR PORCH FOUNDATION, CORBEL AND PIER WATERPROOFING AND INSULATION SCOPE



4A ALTERNATE SECTION DETAIL THROUGH PIERS

WITH STAMPED CONCRETE



9 STAIRCASE DETAIL

9A ALTERNATE DETAIL WITH STAMPED CONCRETE

9A ALTERNATE DETAIL WITH STAMPED CONCRETE

NO.	DATE	REVISION	INT.

UNAUTHORIZED ALTERATION OR ADDITION TO THIS DOCUMENT IS A VIOLATION OF SECTION 7209 OF THE NEW YORK STATE EDUCATION LAW.	
PROJECT ENGINEER: AE	DRAWN BY: DB
DESIGNED BY: BA	CHECKED BY: BA/WDM



TOWN OF BLOOMING GROVE	
ORANGE COUNTY	NEW YORK
LASSER PARK SENIOR CENTER	

CONTRACT 2	
FOUNDATION DETAILS	
STRUCTURAL	

PROJECT NO. 5708	DRAWING NO. A8
DATE: AUGUST 2023	
SCALE: AS NOTED	