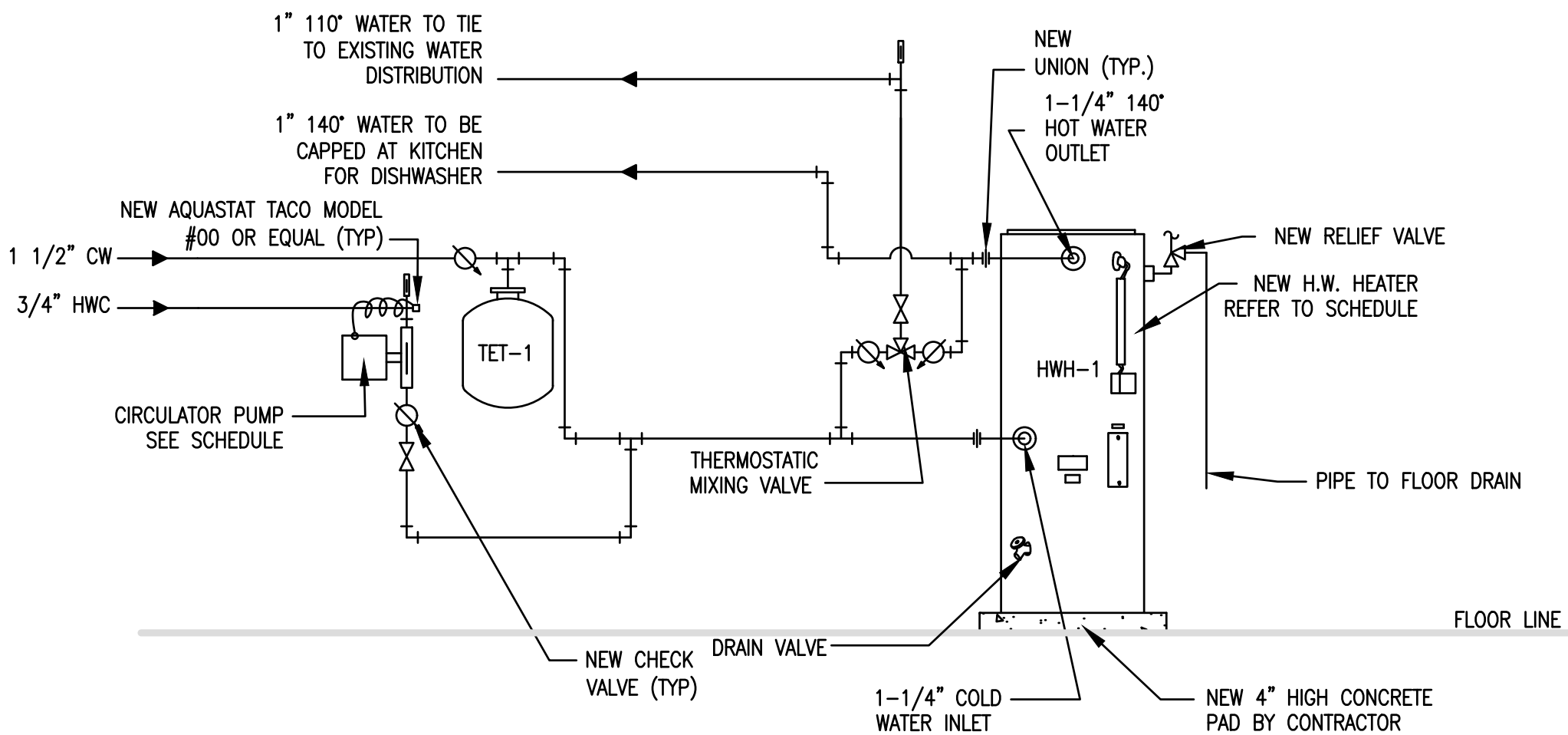


F:\5708-BG-Senior Center\Contract 2.dwg\Plumbing\6708-P-DT02.dwg, P4, 0/28/2023 5:10:07 PM, Maplan



GENERAL NOTE:
CONTRACTOR RESPONSIBLE FOR INSULATION OF ALL NEW DOMESTIC WATER LINES.

1 HOT WATER HEATER DETAIL

Scale: NTS

DOMESTIC WATER HEATER - BASED ON AO SMITH COMMERCIAL ELECTRIC WATER HEATER

MARK	MODEL	TYPE	CAPACITY	KW INPUT	RECOVERY @ 100' F RISE	PHYSICAL DIMENSIONS (IN.)		WATER CONNECTIONS	WEIGHT
						DIA.	HEIGHT		
HWH-1	DRE-80-27	ELECTRIC	80 GAL	27 KW	111 GPH	25-1/2"	60-1/4"	1-1/4"	280 LBS

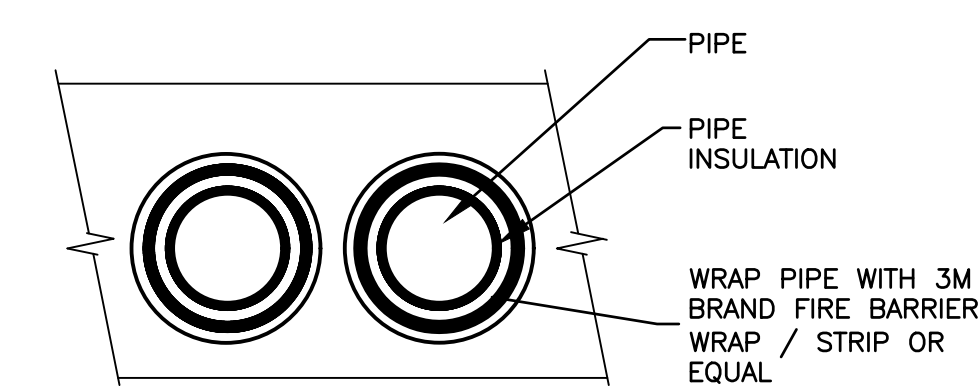
REFER TO DETAIL 1/P-4 FOR MORE INFORMATION

HOT WATER CIRCULATOR PUMP SCHEDULE -BASED ON TACO

MARK	MODEL NO.	MANF.	FLOW	MOTOR	VOLTAGE	RPM	CONTROL	DISCONNECT	REMARKS
HWC-1	003-B4	TACO	.25 GPM @ 2.75' HEAD	1/40 HP 60 HZ, 1 PH	115V	3250	AQUASTAT & 12 HR. TIMER	ON/OFF SWITCH	ALL BRONZE CONSTRUCTION

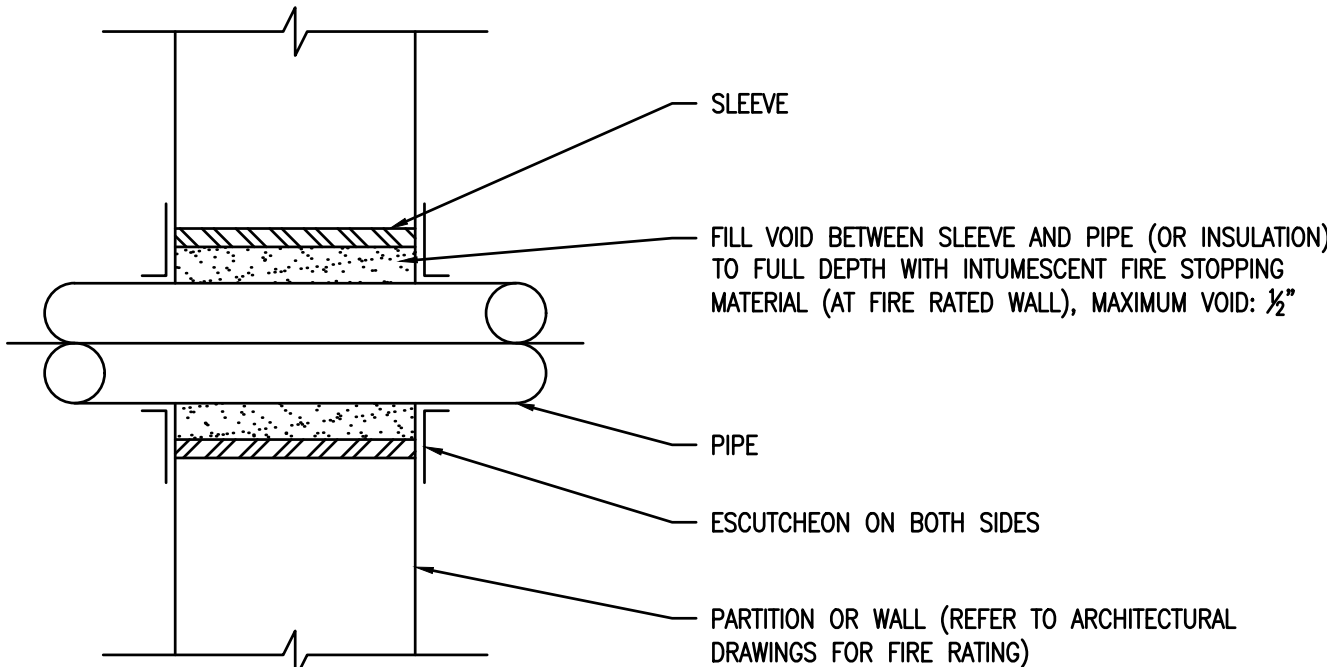
HOT WATER EXPANSION TANK SCHEDULE -BASED ON WATTS

MARK	MODEL NO.	MANF.	VOLUME	ACCEPTANCE VOLUME	DIAMETER	HEIGHT	CONN.	WEIGHT
TET-1	DETA12	WATTS	5 GAL.	3.3 GAL.	12"	14"	3/4"	28 LBS



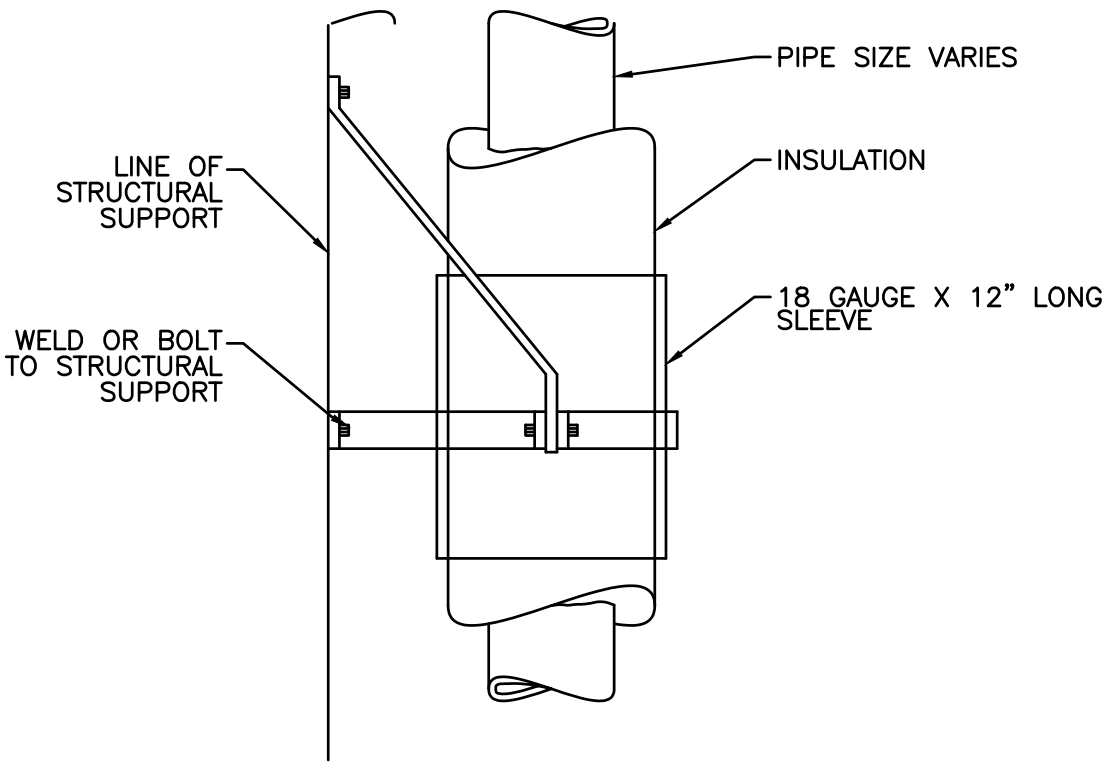
3 PIPE PENETRATION DETAIL THRU FIRE RATED WALL

Scale: NTS



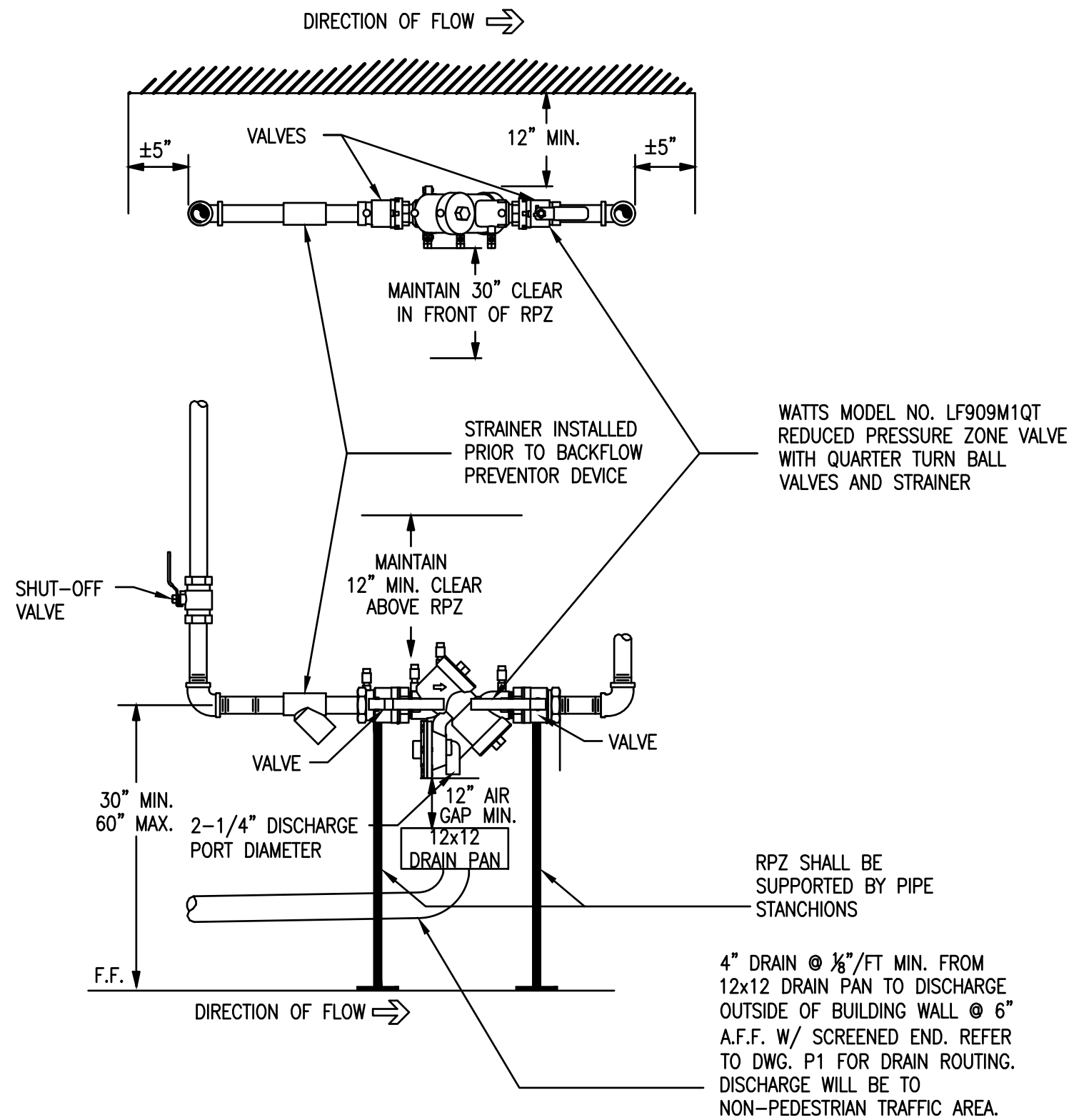
4 PIPE PENETRATION THRU FIRE WALL

Scale: NTS



5 DETAIL OF VERTICAL PIPE GUIDE

Scale: NTS



2 RPZ INSTALLATION DETAIL

Scale: NTS

REDUCED PRESSURE PRINCIPLE ASSEMBLY SCHEDULE

MARK	MANUF	MODEL	SIZE	FLOW	FLOW RATE	PRESSURE LOSS	MAX WORKING PRESSURE	REMARKS
RPZ-1	WATTS	LF909M1QT	2"	77 GPM	7.5 FPS	10 PSI	175 PSI	SEE NOTES BELOW

NOTES:

1. MOUNT RPZ DEVICE AT 30" FROM FLOOR TO CENTERLINE OF DEVICE, INSTALL WITH 12" CLEAR FROM BACK OF DEVICE TO FINISHED WALL (REFER TO INSTALLATION ON THIS SHEET).
2. TEST COCKS MUST BE POSITIONED TO FACILITATE TESTING (30" MINIMUM CLEARANCE)
3. DRAINS CANNOT BE SUBJECT TO FLOODING AND MUST BE SCREENED.
4. RPZ MUST BE A LEAD FREE MODEL.
5. RPZ MUST BE ADEQUATELY SUPPORTED TO PREVENT LATERAL MOVEMENT TO THE FLOOR.
6. SUPPORTS MUST BE PLACED WHERE THEY WILL NOT OBSTRUCT THE FUNCTION OR ACCESS TO RELIEF VALVE.
7. RPZ MUST HAVE USC FOUNDATION FOR CROSS CONNECTION CONTROL APPROVAL.
8. A SEPARATE SHUT OFF VALVE IS REQUIRED UPSTREAM OF THE ASSEMBLY.
9. RPZ MAY NOT BE INSTALLED HIGHER THAN 5' ABOVE THE FLOOR OR A FIXED PLATFORM IS REQUIRED.
10. INSTALL PROTECTIVE STRAINER PER MANUFACTURERS RECOMMENDATION
11. RPZ DEVICE WILL BE INSTALLED ABOVE THE 100 YEAR FLOOD ELEVATION.

GENERAL PLUMBING SHEET NOTES

1. THE PLUMBING WORK SHALL BE PERFORMED IN STRICT ACCORDANCE WITH THE PROJECT SPECIFICATIONS AND WITH THE LATEST EDITION OF THE PREVAILING STATE PLUMBING CODES AS WELL AS ALL LOCAL REGULATIONS THAT MAY APPLY. IN CASE OF CONFLICT BETWEEN THE CONTRACT DOCUMENTS AND A GOVERNING CODE OR ORDINANCE THE MORE STRINGENT STANDARD SHALL APPLY.
2. ALL PLUMBING WORK SHALL BE COORDINATED WITH ALL OTHER TRADES BEFORE PROCEEDING.
3. INVERT ELEVATIONS AND EXACT LOCATIONS OF ALL EXISTING UTILITIES SHALL BE VERIFIED BEFORE PROCEEDING WITH NEW WORK.
4. NO CHANGES ARE TO BE MADE IN PLUMBING LAYOUT WITHOUT WRITTEN PERMISSION BY THE ARCHITECT AND/OR ENGINEER.
5. NO PIPING SHALL BE EXPOSED IN FINISHED AREAS.
6. ROUGHING DIMENSIONS OF TOILET FIXTURES MUST BE COORDINATED WITH ALL TRADES.
7. WATER SUPPLY PIPING SHALL BE TYPE "L" COPPER, OR EQUAL.
8. INSULATE ALL WATER PIPING EXCEPT EXPOSED TO FIXTURES WITH 1/2" FIBERGLASS INSULATION WITH NON-COMBUSTIBLE UL RATED VAPOR BARRIER OR CLOSED CELL FLEXIBLE INSULATION.
9. PROVIDE SHUT-OFF VALVES AT EACH FIXTURE ON WATER SUPPLY PIPES, COLD AND HOT.
10. ALL ACCESS PANELS & LOCATIONS SHALL BE BY CONTRACTOR AND COORDINATED WITH ALL OTHER TRADES.
11. INSTALL ALL REQUIRED CLEANOUTS TO CLEAR EQUIPMENT AND FIXTURES.
12. ALL WORK SHALL BE PROPERLY TESTED, BALANCED, CLEANED AND DISINFECTED.
13. CONTRACTOR TO FIRESEAL ALL THRU-WALL PENETRATIONS THROUGH RATED WALLS WITH 3M BRAND FIRESTOP SEALANT OR APPROVED EQUAL.
14. REFER TO PLUMBING FIXTURE CONNECTION SCHEDULE.
15. ALL UNDERGROUND COPPER WATER PIPING SHALL BE PROTECTED IN A PVC CASING PIPE 2" GREATER THAN THE LARGEST DIAMETER SUPPLY LINE. PIPING SHALL BE COATED WITH ASPHALTUM AND BITUMASTIC.
16. ALL PIPING TO BE RUN AS TIGHT AS POSSIBLE TO STRUCTURE. COORDINATE WITH ALL TRADES
17. CONTRACTOR IS RESPONSIBLE FOR THE PRODUCTION OF PLUMBING AS BUILT DRAWINGS AND ASSOCIATED DOCUMENTS.
18. CONTRACTOR TO PROTECT PLUMBING PIPING FROM DAMAGE RESULTING FROM EXPANSION, CONTRACTION AND STRUCTURAL SETTLEMENT.
19. EXPANSION JOINT FITTINGS TO BE USED WHERE NECESSARY TO PROVIDE FOR EXPANSION AND CONTRACTION OF PIPING.