

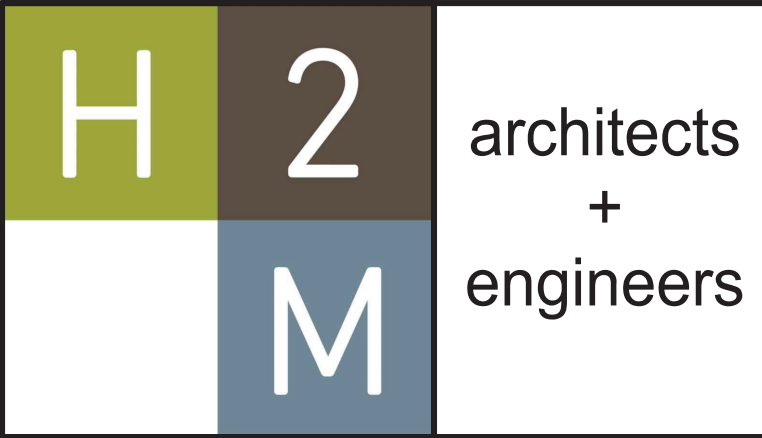
SPLIT EVAPORATING UNITS

UNIT TAG	UNIT LOCATION	TYPE	PAIRED EQUIPMENT		PERFORMANCE/ CONSTRUCTION REQUIREMENTS						BASIS OF DESIGN INFORMATION						NOTES	ELECTRICAL NOTES				
					REFRIGERANT	SUPPLY UNIT DATA					MANUF.	MODEL	NOMINAL DIMENSIONS L" x W" x H"	NOMINAL OPERATING WEIGHT (LBS.)	ELECTRICAL DATA							
						NOMINAL SIZE (MBH)	DRY AIRFLOW (CFM) [HI-MED-LO]	SOUND LEVEL LOW TO HIGH dB(A)	TOTAL COOLING CAPACITY (MBH)	SENSIBLE COOLING CAPACITY (MBH)					HEATING CAPACITY (MBH) @ 0°F	VOLTS/ PHASE/ HZ			MCA (A)	MOCPP (A)		
AC - 105	ROOM 105	CEILING MOUNTED CASSETTE	CU-3	BC-8	R-410A	30	1112/918/671	32 / 38	30	22.3	34	DAIKIN	FXFQ30TVJU	33-1/16 x 33-1/16 x 11-5/16	58	208/1/60	1.3	15	1-5	7.12.14		
AC - 202	ROOM 202	CEILING MOUNTED CASSETTE			R-410A	36	1165/918/671	32 / 38	36	28.2	40	DAIKIN	FXFQ36TVJU	33-1/16 x 33-1/16 x 11-5/16	58	208/1/60	1.5	15	1-5	7.12.14		
AC - 204	ROOM 204	CEILING MOUNTED CASSETTE			R-410A	36	1165/918/671	32 / 38	36	28.2	40	DAIKIN	FXFQ36TVJU	33-1/16 x 33-1/16 x 11-5/16	58	208/1/60	1.5	15	1-5	7.12.14		
AC - 205	ROOM 205	CEILING MOUNTED CASSETTE			R-410A	36	1165/918/671	32 / 38	36	28.2	40	DAIKIN	FXFQ36TVJU	33-1/16 x 33-1/16 x 11-5/16	58	208/1/60	1.5	15	1-5	7.12.14		
AC - 206	ROOM 206	CEILING MOUNTED CASSETTE			R-410A	36	1165/918/671	32 / 38	36	28.2	40	DAIKIN	FXFQ36TVJU	33-1/16 x 33-1/16 x 11-5/16	58	208/1/60	1.5	15	1-5	7.12.14		
AC - 207	ROOM 207	CEILING MOUNTED CASSETTE			R-410A	30	1112/918/671	32 / 38	30	22.3	34	DAIKIN	FXFQ30TVJU	33-1/16 x 33-1/16 x 11-5/16	58	208/1/60	1.3	15	1-5	7.12.14		
AC - 209	ROOM 209	CEILING MOUNTED CASSETTE			R-410A	14	512/459/388	27 / 29	14.4	11.3	17	DAIKIN	FXFQ15TVJU	33-1/16 x 33-1/16 x 9-11/16	42	208/1/60	0.40	15	1-5	7.12.14		
AC - 211	ROOM 211	CEILING MOUNTED CASSETTE			R-410A	18	742/618/477	28 / 32	18	16	20	DAIKIN	FXFQ18TVJU	33-1/16 x 33-1/16 x 9-11/16	42	208/1/60	0.60	15	1-5	7.12.14		
AC - 214	ROOM 214	CEILING MOUNTED CASSETTE			R-410A	36	1165/918/671	32 / 38	36	28.2	40	DAIKIN	FXFQ36TVJU	33-1/16 x 33-1/16 x 11-5/16	58	208/1/60	1.5	15	1-5	7.12.14		
AC - 215	ROOM 215	CEILING MOUNTED CASSETTE	R-410A	30	1112/918/671	32 / 38	30	22.3	34	DAIKIN	FXFQ30TVJU	33-1/16 x 33-1/16 x 11-5/16	58	208/1/60	1.3	15	1-5	7.12.14				
AC - 216	ROOM 216	CEILING MOUNTED CASSETTE	R-410A	36	1165/918/671	32 / 38	36	28.2	40	DAIKIN	FXFQ36TVJU	33-1/16 x 33-1/16 x 11-5/16	58	208/1/60	1.5	15	1-5	7.12.14				
AC - 217	ROOM 217	CEILING MOUNTED CASSETTE	R-410A	36	1165/918/671	32 / 38	36	28.2	40	DAIKIN	FXFQ36TVJU	33-1/16 x 33-1/16 x 11-5/16	58	208/1/60	1.5	15	1-5	7.12.14				
AC - 218	ROOM 218	CEILING MOUNTED CASSETTE	R-410A	36	1165/918/671	32 / 38	36	28.2	40	DAIKIN	FXFQ36TVJU	33-1/16 x 33-1/16 x 11-5/16	58	208/1/60	1.5	15	1-5	7.12.14				
AC - 219	ROOM 219	CEILING MOUNTED CASSETTE	R-410A	36	1165/918/671	32 / 38	36	28.2	40	DAIKIN	FXFQ36TVJU	33-1/16 x 33-1/16 x 11-5/16	58	208/1/60	1.5	15	1-5	7.12.14				
AC - 29	ROOM 29	CEILING MOUNTED CASSETTE	R-410A	30	1112/918/671	32 / 38	30	22.3	34	DAIKIN	FXFQ30TVJU	33-1/16 x 33-1/16 x 11-5/16	58	208/1/60	1.3	15	1-5	7.12.14				
AC - 31	ROOM 31	CEILING MOUNTED CASSETTE	R-410A	30	1112/918/671	32 / 38	30	22.3	34	DAIKIN	FXFQ30TVJU	33-1/16 x 33-1/16 x 11-5/16	58	208/1/60	1.3	15	1-5	7.12.14				
AC - 33	ROOM 33	CEILING MOUNTED CASSETTE	R-410A	30	1112/918/671	32 / 38	30	22.3	34	DAIKIN	FXFQ30TVJU	33-1/16 x 33-1/16 x 11-5/16	58	208/1/60	1.3	15	1-5	7.12.14				
AC - 34	ROOM 34	CEILING MOUNTED CASSETTE	R-410A	30	1112/918/671	32 / 38	30	22.3	34	DAIKIN	FXFQ30TVJU	33-1/16 x 33-1/16 x 11-5/16	58	208/1/60	1.3	15	1-5	7.12.14				
AC - 104	ROOM 104	CEILING MOUNTED CASSETTE	CU-5	BC-6	R-410A	48	1218/971/742	34 / 40	48	35	54	DAIKIN	FXFQ48TVJU	33-1/16 x 33-1/16 x 11-5/16	58	208/1/60	1.8	15	1-5	7.12.14		
AC - 106	ROOM 106	CEILING MOUNTED CASSETTE			R-410A	48	1218/971/742	34 / 40	48	35	54	DAIKIN	FXFQ48TVJU	33-1/16 x 33-1/16 x 11-5/16	58	208/1/60	1.8	15	1-5	7.12.14		
AC - 119	ROOM 119	CEILING MOUNTED CASSETTE			R-410A	30	1112/918/671	32 / 38	30	22.3	34	DAIKIN	FXFQ30TVJU	33-1/16 x 33-1/16 x 11-5/16	58	208/1/60	1.3	15	1-5	7.12.14		
AC - 121	ROOM 121	CEILING MOUNTED CASSETTE			R-410A	30	1112/918/671	32 / 38	30	22.3	34	DAIKIN	FXFQ30TVJU	33-1/16 x 33-1/16 x 11-5/16	58	208/1/60	1.3	15	1-5	7.12.14		
AC - 123	ROOM 123	CEILING MOUNTED CASSETTE			R-410A	30	1112/918/671	32 / 38	30	22.3	34	DAIKIN	FXFQ30TVJU	33-1/16 x 33-1/16 x 11-5/16	58	208/1/60	1.3	15	1-5	7.12.14		
AC - 26	ROOM 26	CEILING MOUNTED CASSETTE			R-410A	36	1165/918/671	32 / 38	36	28.2	40	DAIKIN	FXFQ36TVJU	33-1/16 x 33-1/16 x 11-5/16	58	208/1/60	1.5	15	1-5	7.12.14		
AC - 27	ROOM 27	CEILING MOUNTED CASSETTE			R-410A	48	1218/971/742	34 / 40	48	35	54	DAIKIN	FXFQ48TVJU	33-1/16 x 33-1/16 x 11-5/16	58	208/1/60	1.8	15	1-5	7.12.14		
AC - 28	ROOM 28	CEILING MOUNTED CASSETTE			R-410A	36	1165/918/671	32 / 38	36	28.2	40	DAIKIN	FXFQ36TVJU	33-1/16 x 33-1/16 x 11-5/16	58	208/1/60	1.5	15	1-5	7.12.14		
AC - 30	ROOM 30	CEILING MOUNTED CASSETTE			R-410A	15	512/459/388	27 / 29	14.4	11.3	17	DAIKIN	FXFQ15TVJU	33-1/16 x 33-1/16 x 9-11/16	42	208/1/60	0.40	15	1-5	7.12.14		
AC - 32	ROOM 32	CEILING MOUNTED CASSETTE	R-410A	18	742/618/477	28 / 32	18	16	20	DAIKIN	FXFQ18TVJU	33-1/16 x 33-1/16 x 9-11/16	42	208/1/60	0.60	15	1-5	7.12.14				
AC - 116	ROOM 116	CEILING MOUNTED CASSETTE	CU-6	BC-4	R-410A	36	1165/918/671	32 / 38	36	28.2	40	DAIKIN	FXFQ36TVJU	33-1/16 x 33-1/16 x 11-5/16	58	208/1/60	1.5	15	1-5	7.12.14		
AC - 117	ROOM 117	CEILING MOUNTED CASSETTE			R-410A	48	1218/971/742	34 / 40	48	35	54	DAIKIN	FXFQ48TVJU	33-1/16 x 33-1/16 x 11-5/16	58	208/1/60	1.8	15	1-5	7.12.14		
AC - 118	ROOM 118	CEILING MOUNTED CASSETTE			R-410A	30	1112/918/671	32 / 38	30	22.3	34	DAIKIN	FXFQ30TVJU	33-1/16 x 33-1/16 x 11-5/16	58	208/1/60	1.3	15	1-5	7.12.14		
AC - 120	ROOM 120	CEILING MOUNTED CASSETTE			R-410A	30	1112/918/671	32 / 38	30	22.3	34	DAIKIN	FXFQ30TVJU	33-1/16 x 33-1/16 x 11-5/16	58	208/1/60	1.3	15	1-5	7.12.14		
AC - 122	ROOM 122	CEILING MOUNTED CASSETTE			R-410A	30	1112/918/671	32 / 38	30	22.3	34	DAIKIN	FXFQ30TVJU	33-1/16 x 33-1/16 x 11-5/16	58	208/1/60	1.3	15	1-5	7.12.14		
AC - 14	ROOM 14	CEILING MOUNTED CASSETTE			CU UV-1	BC-1	R-410A	24	777/618/477	28 / 32	23	20	27	DAIKIN	FXFQ24TVJU	33-1/16 x 33-1/16 x 9-11/16	51	208/1/60	.7	15	1-5	7.12.14

MECHANICAL NOTES:
 1. MANUFACTURER TO PROVIDE HARDWIRED, WALL MOUNTED, PROGRAMMABLE TEMPERATURE SENSOR.
 2. DRAIN PAN LEVEL SENSOR THE UNIT SHALL TURN OFF IF WATER IS SENSED.
 3. FURNISH AND INSTALL BACNET INTERFACE AND INTEGRATE WITH BMS.
 4. INSTALL ALL EQUIPMENT AND COMPONENTS ACCORDING TO MANUFACTURER'S INSTRUCTIONS.
 5. CONFIGURABLE AIRFLOW DIRECTIONS

ELECTRICAL NOTES:
 1. INTEGRAL DISCONNECT SWITCH [FIELD WIRED]
 2. INTEGRAL DISCONNECT SWITCH [FACTORY WIRED]
 3. INTEGRAL UNPOWERED RECEPTACLES [FIELD WIRED]
 4. INTEGRAL POWERED RECEPTACLES [FACTORY WIRED]
 5. INTEGRAL CONDENSATE PUMP [UNPOWERED]
 6. INTEGRAL CONDENSATE PUMP [POWERED]
 7. LOW VOLTAGE CONTROLS

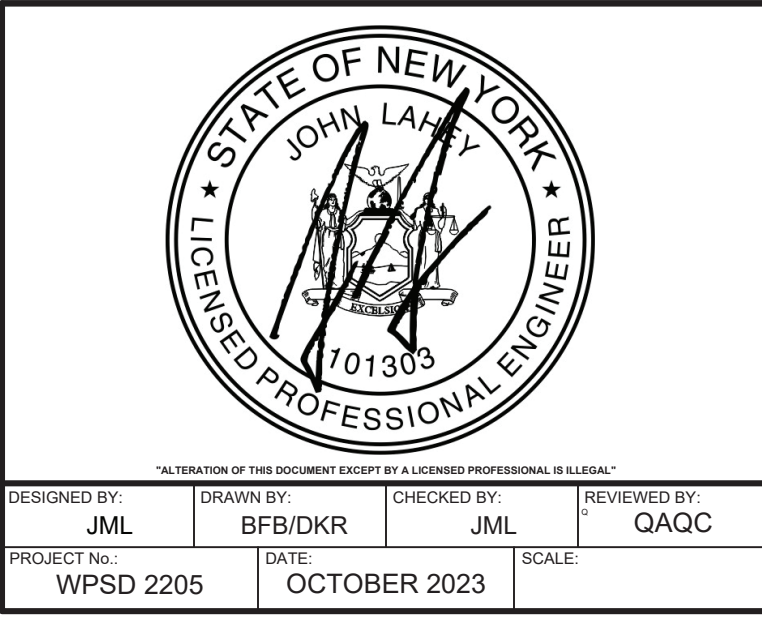
8. LINE VOLTAGE CONTROLS
 9. INTEGRAL STARTERS
 10. MOTORIZED DAMPERS [24VAC]
 11. MOTORIZED DAMPERS [120VAC]
 12. SINGLE POINT POWER FEED
 13. INDOOR UNIT POWERED FROM OUTDOOR UNIT
 14. ELECTRICAL CONTRACTOR TO PROVIDE DISCONNECT SWITCH ON SAME POWER FEED AS ASSOCIATED INDOOR UNIT
 15.



2700 Westchester Ave., Suite 415
 Purchase, NY 10577
 914.358.5623 • www.h2m.com

CONSULTANTS:

MARK	DATE	DESCRIPTION
	10-16-23	FINAL BID DOCUMENT



DESIGNED BY: JML DRAWN BY: BFB/DKR CHECKED BY: JML REVIEWED BY: QAQC
 PROJECT NO.: WPSD 2205 DATE: OCTOBER 2023 SCALE:

White Plains City School District

AC and Ventilation Upgrades at Mamaroneck Elementary School

7 Nosband Ave.
 White Plains, NY 10605

SED PROJECT CONTROL
 NO. 66-22-00-01-0-010-017

CONTRACT: **CONTRACT H HEATING VENTILATION AND AIR CONDITIONING**

STATUS: **FINAL BID DOCUMENT**

SHEET TITLE: **MECHANICAL SCHEDULE [2 OF 4]**

DRAWING NO.: **M601.00**

X:\WPSD\White Plains Central School District - 100911WPSD 2205 - AC & Ventilation at Mamaroneck Elem School\02-Bldg CAD\DCS\checkboxes\M601.00 Schedules.dwg Last Modified: Sep 20, 2023 - 2:40pm - Pinned to: Sep 22, 2023 - 12:56pm By: mmliano