

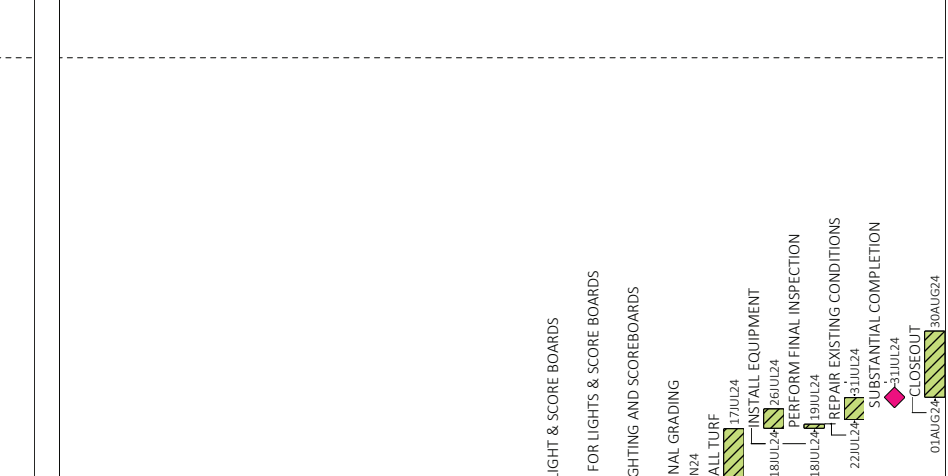
WHITE PLAINS HS ATHLETICS & INTERIOR UPGRADES

Act ID	Description	Orig Dur	Early Start	Early Finish
1410	BIDS DOCUMENTS RELEASED	0	24JUL23 *	
1420	BID & AWARD PROCESS	23	28JUL23	29AUG23
1430	AWARD CONTRACTS	0		10OCT23
1440	SUBMITTAL REVIEW	15	11OCT23	31OCT23



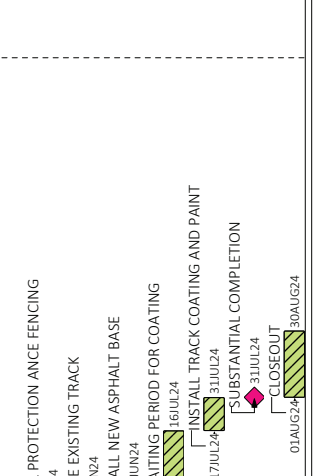
NEW TURF FIELD

1505	MOBILIZE	0	01NOV23	
1510	INSTALL PROTECTION AROUND WORK SITE	3	01NOV23	03NOV23
1512	PROVIDE UTILITY MARK OUT	2	01NOV23	02NOV23
1513	INSTALL EROSION CONTROL FENCE	3	01NOV23	03NOV23
1515	REMOVE EXISTING TOP-SOIL (TURN OVER TO OWNER)	6	06NOV23	13NOV23
1516	EXCAVATION/INSTALL DRAINAGE	25	06NOV23	08DEC23
1519	ROCK-REMOVAL (IF NEEDED VIA ALLOWANCE)	12	20NOV23	05DEC23
1522	INSTALL NEW STORMWATER RETENTION	13	06DEC23	22DEC23
1523	BACKFILL	5	26DEC23	02JAN24
1525	POSSIBLE PAUSE CONSTRUCTION (WINTER- IF NEEDED)	43	03JAN24	01MAR24
1528	MAINTAIN SWPP OVER WINTER PAUSE	43	03JAN24	01MAR24
1534	INSTALL NEW RETAINING WALLS	26	04MAR24	08APR24
1537	INSTALL ELECTRICAL FOR LIGHT & SCORE BOARDS	16	09APR24	30APR24
1540	INSTALL BASES/FOOTINGS FOR LIGHTS & SCORE BOARDS	22	09APR24	08MAY24
1542	INSTALL NEW LIGHTING AND SCOREBOARDS	8	09MAY24	20MAY24
1543	PERFORM FINAL GRADING	17	21MAY24	12JUN24
1546	INSTALL TURF	24	13JUN24	17JUL24
1549	INSTALL EQUIPMENT	7	18JUL24	26JUL24
1557	PERFORM FINAL INSPECTION	2	18JUL24	19JUL24
1750	REPAIR EXISTING CONDITIONS	8	22JUL24	31JUL24
1780	SUBSTANTIAL COMPLETION	0		31JUL24
1800	CLOSEOUT	22	01AUG24	30AUG24



LOUCKS FIELD TRACK REPLACEMENT

3500	MOBILIZE	0	03JUN24	
3505	INSTALL PROTECTION ANCE FENCING	3	03JUN24	05JUN24
3508	REMOVE EXISTING TRACK	7	03JUN24	11JUN24
3511	INSTALL NEW ASPHALT BASE	4	12JUN24	17JUN24
3513	WAITING PERIOD FOR COATING	20	18JUN24	16JUL24
3515	INSTALL TRACK COATING AND PAINT	11	17JUL24	31JUL24
3556	SUBSTANTIAL COMPLETION	0		31JUL24
3575	CLOSEOUT	22	01AUG24	30AUG24



Act ID	Description	Orig Dur	Early Start	Early Finish
WPHS - CEILINGS AT WINGS 'C & D'				
1200	MOBILIZE (2ND SHIFT)	0	01NOV23	
1240	INSTALL/MODIFY MEP ROUGH-IN (2ND SHIFT)	45	01NOV23	04JAN24
1250	INSTALL CEILING GRID (2ND SHIFT)	45	20NOV23	23JAN24
1260	INSTALL LIGHTING (2ND SHIFT)	45	07DEC23	09FEB24
1270	INSTALL CEILING TILES (2ND SHIFT)	46	27DEC23	29FEB24
1280	SUBSTANTIAL COMPLETION OF AREA	0		29FEB24
1310	CLOSEOUT (IF ALTERNATES ARE NOT ACCEPTED)	25	01MAR24	04APR24
WPHS - CEILINGS AT WINGS 'A & B'				
2000	MOBILIZE (2ND SHIFT)	0	01MAR24	
2040	INSTALL/MODIFY MEP ROUGH-IN (2ND SHIFT)	45	01MAR24	02MAY24
2050	INSTALL CEILING GRID (2ND SHIFT)	45	20MAR24	21MAY24
2060	INSTALL LIGHTING (2ND SHIFT)	45	08APR24	07JUN24
2070	INSTALL CEILING TILES (2ND SHIFT)	46	25APR24	27JUN24
2080	SUBSTANTIAL COMPLETION	0		27JUN24
2110	CLOSEOUT (IF ALTERNATE IS ACCEPTED)	25	28JUN24	02AUG24
WPHS - CEILINGS AT WINGS 'G & E'				
1100	MOBILIZE (2ND SHIFT)	0	28JUN24	
1105	REMOVE EXISTING CEILINGS	15	28JUN24	19JUL24
1106	INSTALL/MODIFY MEP ROUGH-IN (2ND SHIFT)	15	02JUL24	23JUL24
1109	INSTALL CEILING GRID	15	22JUL24	09AUG24
1115	INSTALL LIGHTING & HVAC DIFFUSERS/GRILLES	18	10JUL24	02AUG24
1121	INSTALL CEILING TILES	15	12AUG24	30AUG24
1175	SUBSTANTIAL COMPLETION	0		30AUG24
1375	CLOSEOUT (IF ALTERNATE IS ACCEPTED)	22	02SEP24	01OCT24
WPHS - DUCTWORK AND SOFFIT IN CLASSROOMS				
4000	MOBILIZE	0	26JUN24	
4005	INSTALL PROTECTION IN CLASS ROOMS	5	26JUN24	02JUL24
4010	INSTALL TRANSOM FILM	20	03JUL24	31JUL24
4030	INSTALL NEW CLASSROOM EXHAUST DUCT	25	11JUL24	14AUG24
4040	INSTALL CURBS AND EQUIPMENT	10	18JUL24	31JUL24
4050	INSTALL NEW CLASSROOM SOFFIT	27	25JUL24	30AUG24
4055	SUBSTANTIAL COMPLETION	0		30AUG24
4060	CLOSEOUT	23	02SEP24	02OCT24

Company name TRITON/ H2M
 Project name WPCSD PH-1 BID ...
 Project title WPCSD - PHASE-1 BID SCHEDULE

Number/Version BID 1.0 ADD#3
 Page number 2A
 © Primavera Systems, Inc.

WHITE PLAINS CITY SCHOOL DISTRICT
'22 CAPITAL IMPROVEMENT PROJECT
PHASE-1 BID SCHEDULE

Legend:

- Early bar
- Progress bar
- Summary bar
- Start milestone point
- Finish milestone point