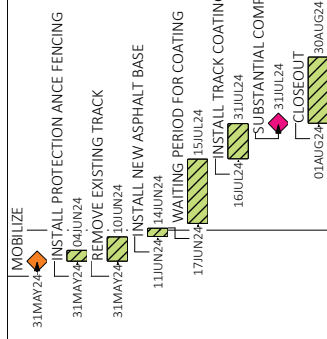
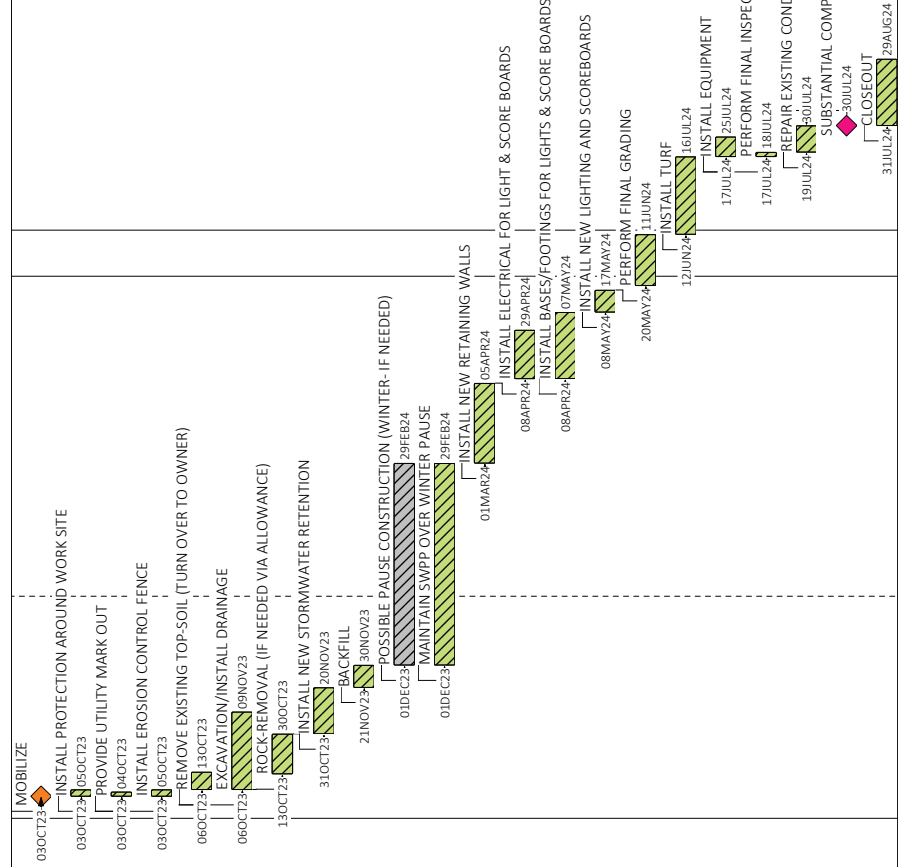
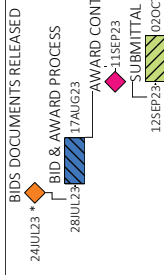


Act ID	Description	Orig Dur	Early Start	Early Finish
<b>BID &amp; AWARD</b>				
1410	BIDS DOCUMENTS RELEASED	0	24JUL23 *	
1420	BID & AWARD PROCESS	15	28JUL23	17AUG23
1430	AWARD CONTRACTS	0		11SEP23
1440	SUBMITTAL REVIEW	15	12SEP23	02OCT23
<b>NEW TURF FIELD</b>				
1505	MOBILIZE	0	03OCT23	
1510	INSTALL PROTECTION AROUND WORK SITE	3	03OCT23	05OCT23
1512	PROVIDE UTILITY MARK OUT	2	03OCT23	04OCT23
1513	INSTALL EROSION CONTROL FENCE	3	03OCT23	05OCT23
1515	REMOVE EXISTING TOP-SOIL (TURN OVER TO OWNER)	6	06OCT23	13OCT23
1516	EXCAVATION/INSTALL DRAINAGE	25	06OCT23	09NOV23
1519	ROCK-REMOVAL (IF NEEDED VIA ALLOWANCE)	12	13OCT23	30OCT23
1522	INSTALL NEW STORMWATER RETENTION	15	31OCT23	20NOV23
1523	BACKFILL	8	21NOV23	30NOV23
1525	POSSIBLE PAUSE CONSTRUCTION (WINTER- IF NEEDED)	63	01DEC23	29FEB24
1528	MAINTAIN SWPP OVER WINTER PAUSE	63	01DEC23	29FEB24
1534	INSTALL NEW RETAINING WALLS	26	01MAR24	05APR24
1537	INSTALL ELECTRICAL FOR LIGHT & SCORE BOARDS	16	08APR24	29APR24
1540	INSTALL BASES/FOOTINGS FOR LIGHTS & SCORE BOARDS	22	08APR24	07MAY24
1542	INSTALL NEW LIGHTING AND SCOREBOARDS	8	08MAY24	17MAY24
1543	PERFORM FINAL GRADING	17	20MAY24	11JUN24
1546	INSTALL TURF	24	12JUN24	16JUL24
1549	INSTALL EQUIPMENT	7	17JUL24	25JUL24
1557	PERFORM FINAL INSPECTION	2	17JUL24	18JUL24
1750	REPAIR EXISTING CONDITIONS	8	19JUL24	30JUL24
1780	SUBSTANTIAL COMPLETION	0		30JUL24
1800	CLOSEOUT	22	31JUL24	29AUG24
<b>LOUCKS FIELD TRACK REPLACEMENT</b>				
3500	MOBILIZE	0	31MAY24	
3505	INSTALL PROTECTION ANCE FENCING	3	31MAY24	04JUN24
3508	REMOVE EXISTING TRACK	7	31MAY24	10JUN24
3511	INSTALL NEW ASPHALT BASE	4	11JUN24	14JUN24
3513	WAITING PERIOD FOR COATING	20	17JUN24	15JUL24
3515	INSTALL TRACK COATING AND PAINT	12	16JUL24	31JUL24
3556	SUBSTANTIAL COMPLETION	0		31JUL24
3575	CLOSEOUT	22	01AUG24	30AUG24



Act ID	Description	Orig Dur	Early Start	Early Finish
<b>WPHS - CEILINGS AT WINGS 'C &amp; D'</b>				
1200	MOBILIZE (2ND SHIFT)	0	03OCT23	
1240	INSTALL/MODIFY MEP ROUGH-IN (2ND SHIFT)	45	03OCT23	04DEC23
1250	INSTALL CEILING GRID (2ND SHIFT)	45	20OCT23	21DEC23
1260	INSTALL LIGHTING (2ND SHIFT)	45	08NOV23	11JAN24
1270	INSTALL CEILING TILES (2ND SHIFT)	46	27NOV23	31JAN24
1280	SUBSTANTIAL COMPLETION OF AREA	0	31JAN24	31JAN24
1310	CLOSEOUT (IF ALTERNATES ARE NOT ACCEPTED)	25	01FEB24	06MAR24
<b>WPHS - CEILINGS AT WINGS 'A &amp; B'</b>				
2000	MOBILIZE (2ND SHIFT)	0	01FEB24	
2040	INSTALL/MODIFY MEP ROUGH-IN (2ND SHIFT)	45	01FEB24	03APR24
2050	INSTALL CEILING GRID (2ND SHIFT)	45	20FEB24	22APR24
2060	INSTALL LIGHTING (2ND SHIFT)	45	08MAR24	09MAY24
2070	INSTALL CEILING TILES (2ND SHIFT)	46	27MAR24	29MAY24
2080	SUBSTANTIAL COMPLETION	0		29MAY24
2110	CLOSEOUT (IF ALTERNATE IS ACCEPTED)	25	30MAY24	03JUL24
<b>WPHS - CEILINGS AT WINGS 'G &amp; E'</b>				
1100	MOBILIZE (2ND SHIFT)	0	30APR24	
1106	INSTALL/MODIFY MEP ROUGH-IN (2ND SHIFT)	45	30APR24	01JUL24
1109	INSTALL CEILING GRID (2ND SHFT BEFORE JUNE 26)	45	17MAY24	19JUL24
1115	INSTALL LIGHTING (2ND SHFT BEFORE JUNE 26)	45	05JUN24	07AUG24
1121	INSTALL CEILING TILES	47	24JUN24	28AUG24
1175	SUBSTANTIAL COMPLETION	0		28AUG24
1375	CLOSEOUT (IF ALTERNATE IS ACCEPTED)	25	29AUG24	02OCT24
<b>WPHS - DUCTWORK AND SOFFIT IN CLASSROOMS</b>				
4000	MOBILIZE	0	24JUN24	
4005	INSTALL PROTECTION IN CLASS ROOMS	5	24JUN24	28JUN24
4010	INSTALL TRANSOM FILM	20	01JUL24	29JUL24
4030	INSTALL NEW CLASSROOM EXHAUST DUCT	25	09JUL24	12AUG24
4040	INSTALL CURBS AND EQUIPMENT	10	16JUL24	29JUL24
4050	INSTALL NEW CLASSROOM SOFFIT	27	23JUL24	28AUG24
4055	SUBSTANTIAL COMPLETION	0		28AUG24
4060	CLOSEOUT	23	29AUG24	30SEP24

Company name TRITON/ H2M  
 Project name WPCSD PH-1 BID ...  
 Project title WPCSD - PHASE-1 BID SCHEDULE

Number/Version BID 1.0 ADD#2  
 Page number 2A  
 © Primavera Systems, Inc.

WHITE PLAINS CITY SCHOOL DISTRICT  
 '22 CAPITAL IMPROVEMENT PROJECT  
 PHASE-1 BID SCHEDULE

Early bar  
 Progress bar  
 Summary bar  
 Start milestone point  
 Finish milestone point