

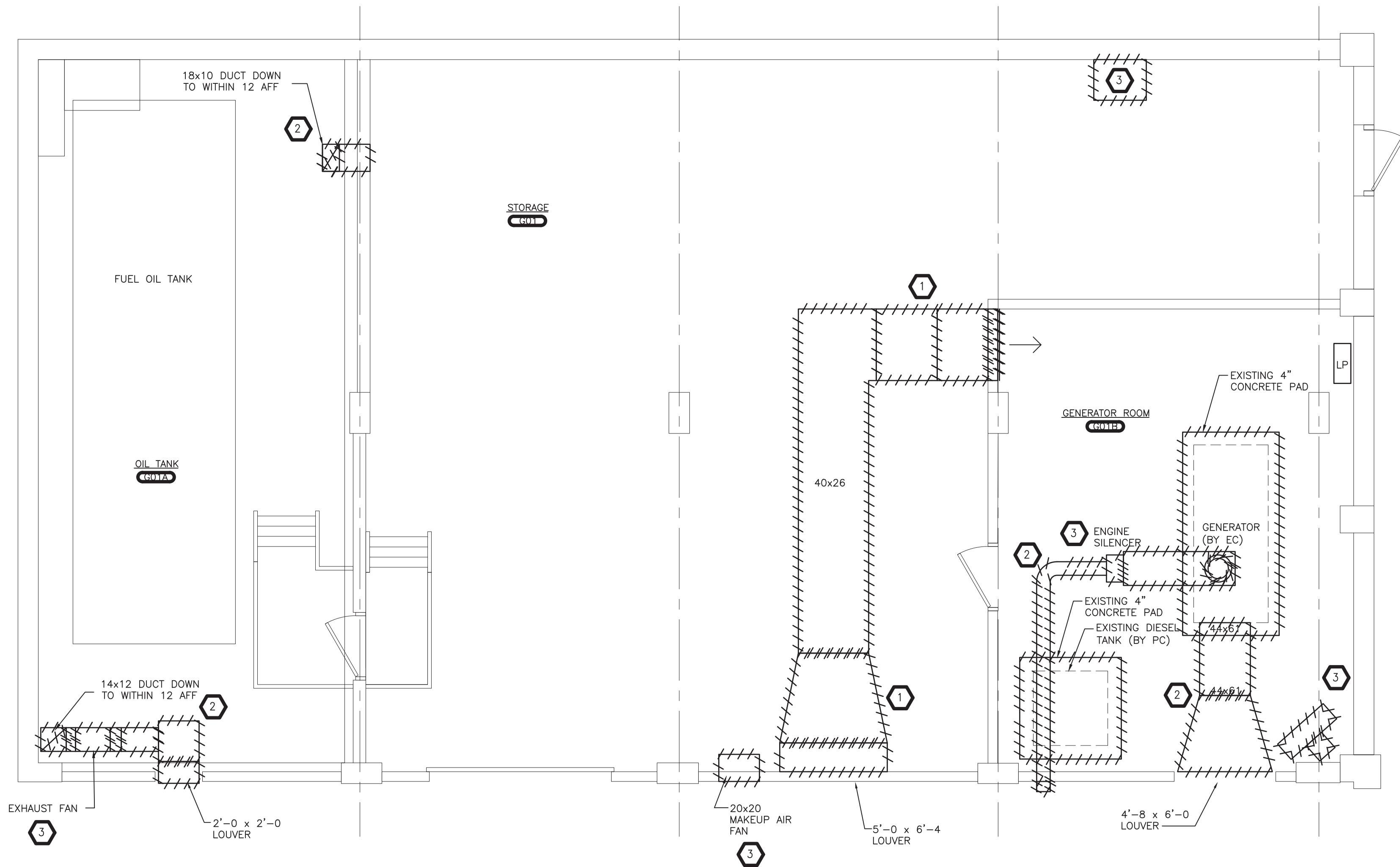
KEYED NOTES - DEMOLITION:

- 1 REMOVE EXISTING DUCTWORK, INSECT SCREENS, AND HANGERS. LOUVERS IN EXTERIOR WALLS TO REMAIN. PROVIDE TEMPORARY COVERINGS TO LOUVERS AND PENETRATIONS. ANY EXISTING DAMPERS, DUCT DETECTORS, AND ASSOCIATED CONTROLS ARE TO BE REMOVED. REMOVE INSULATION AND FIRESTOPPING.
- 2 REMOVE EXISTING DUCTWORK AND ASSOCIATED STORE IN OWNER SPECIFIED LOCATION FOR NECESSARY MODIFICATION AND LATER REINSTALLATION.
- 3 REMOVE EXISTING UNIT HEATER, FANS, ENGINE SILENCER, AND EQUIPMENT ALONG WITH ANY ASSOCIATED CASING, SUPPORTS, AND CONTROLS. SAFELY STORE IN OWNER-SELECTED LOCATION FOR LATER REINSTALLATION.

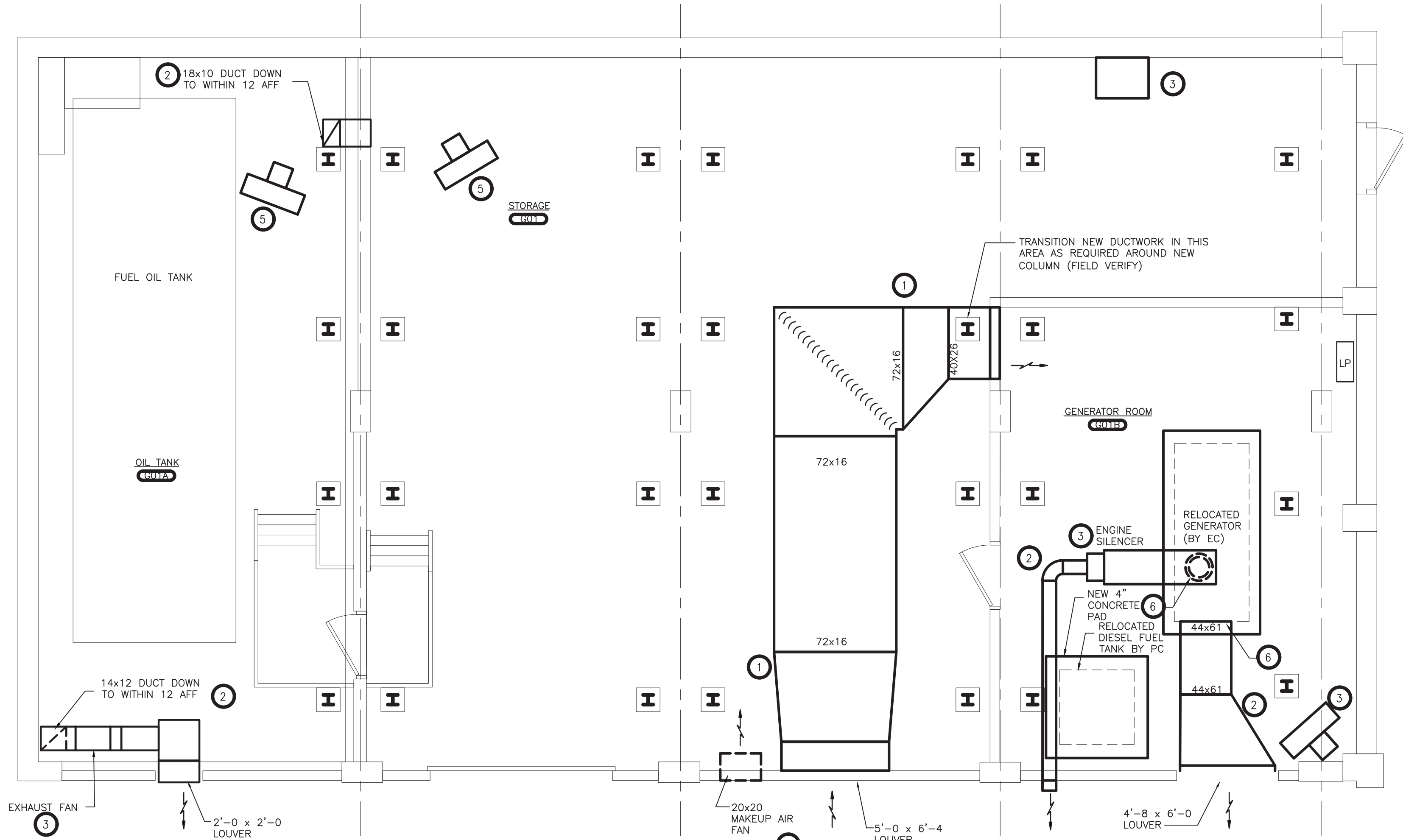
NOTE: MAKE NECESSARY ADJUSTMENTS WHEN REINSTALLING EQUIPMENT, FANS, ETC. SEE P-110 REGARDING STARTUP AND TESTING OF BOILERS AFTER PLUMBING WORK HAS CONCLUDED.

KEYED NOTES - NEW WORK:

- 1 PROVIDE NEW DUCTWORK AS SHOWN. PROVIDE ASSOCIATED SUPPORTS. PROVIDE INSECT SCREENS AT EXTERIOR WALL PENETRATIONS. FINAL DUCTWORK LAYOUT AND SIZING TO BE DICTATED BY FIELD CONDITIONS AND NEW STRUCTURAL COMPONENTS. TRANSITION DUCTWORK AS NECESSARY TO RECONNECT TO EXISTING EXTERIOR LOUVERS. NEW DUCTWORK SHALL MAINTAIN SAME AFF HEIGHT AS EXISTING WITHIN REASON.
- 2 REINSTALL EXISTING DUCTWORK. PROVIDE TRANSITIONS AND MODIFY AS NECESSARY TO RECONNECT TO EXISTING EXTERIOR LOUVERS, PENETRATIONS, RELOCATED EQUIPMENT, ETC.
- 3 REINSTALL UNIT HEATER, FANS AND EQUIPMENT, CONTROLS, DUCT DETECTORS, DAMPERS, AND ASSOCIATED INTO DUCTWORK, PROVIDE TRANSITIONS TO CONNECT TO NEW DUCT SIZING WHEN APPLICABLE.
- 4 ALL DUCTWORK TO BE MADE AIR TIGHT. PENETRATIONS TO THE EXTERIOR TO BE RE-WEATHERPROOFED. ALL PENETRATIONS IN INTERIOR WALLS TO BE FIRESTOPPED.
- 5 PROVIDE NEW ELECTRIC UNIT HEATER MODINE MODEL 100- 208-1PHASE WITH ALL APPURTENANCES. HANG FROM STRUCTURE ABOVE.
- 6 PROVIDE NEW DUCTWORK FLEX CONNECTIONS.



1 PARTIAL REFLECTED CEILING PLAN - DEMOLITION
SCALE: 1/4" = 1'-0"



2 PARTIAL GROUND FLOOR PLAN - NEW WORK
SCALE: 1/4" = 1'-0"

KEY-PLAN
SCALE: NONE



THIS WORK IS THE PROPERTY OF FULLER D'ANGELO ARCHITECTS, P.C. ANY REPRODUCTION OR ALTERATION OF THIS DOCUMENT WITHOUT THE WRITTEN PERMISSION OF FULLER D'ANGELO ARCHITECTS, P.C. IS PROHIBITED. ANY ALTERATION MUST BE APPROVED BY THE ARCHITECT AND MUST BE DOCUMENTED IN THE PROJECT RECORDS. COPYRIGHT © 2019

ENGINEER:



Eisenbach & Rohrer Engineering, P.C.
201 Gateway Street - Union, NY 10987
TEL: 914.892.4444 FAX: 914.892.1917
WWW.FULLERDANGELO.COM

FULLER
D'ANGELO
P.C.
ARCHITECTS
PLANNERS

48 KNOLLWOOD ROAD
ELMHURST NEW YORK 10833
TEL: 914.892.4444
FAX: 914.892.1917
WWW.FULLERDANGELO.COM
Copyright 2020 All Rights Reserved by FULLER
& D'ANGELO P.C.

ENGINEER STAMP:



YONKERS PUBLIC SCHOOLS
STORAGE AREA RENOVATIONS
Martin Luther King Elementary School
135 Locust Hill Avenue, Yonkers N.Y. 10701
S.E.D.# 66-25-00-01-0-23-009

| | |
|-------------------|------------|
| EMR PROJECT NO. | Y19MLK01 |
| YPS NO. | 10875 |
| BO SET | 11.22.2022 |
| S.E.D. ADDENDUM | 11.29.2021 |
| S.E.D. SUBMISSION | 04.09.2021 |
| REVISION | DATE |
| DRAWN BY | 11.22.2022 |
| CHECKED BY | |
| SHEET SIZE | 30"x42" |
| SCALE | AS SHOWN |

SHEET TITLE
PARTIAL GROUND
FLOOR PLAN - TANK
ROOM - DEMOLITION
AND NEW WORK

SHEET NO.

M-110