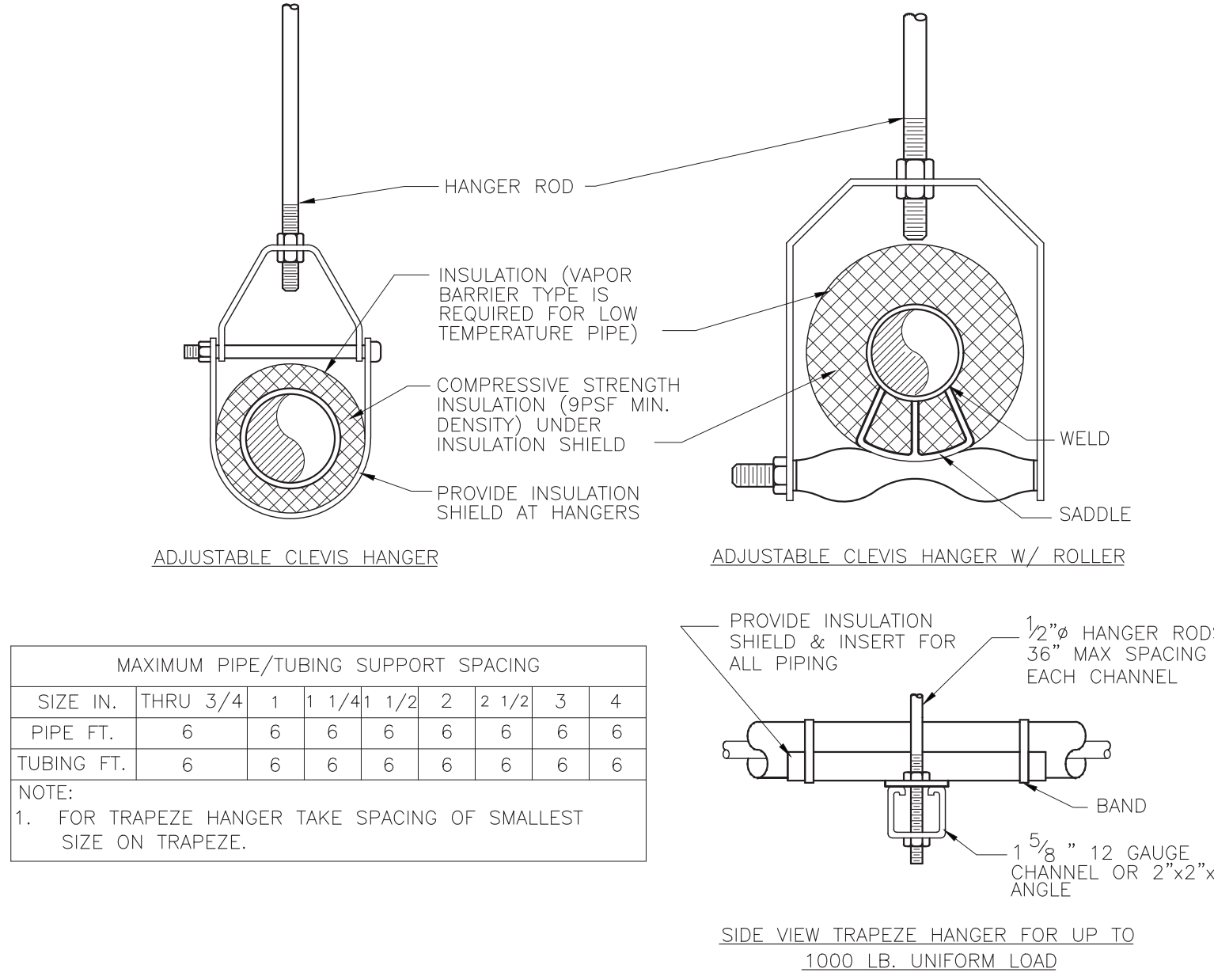


PLUMBING ABBREVIATIONS			
A/E	ARCHITECT / ENGINEER	I/W	INDIRECT WASTE
AD	AREA DRAIN	IWH	INSTANTANEOUS WATER HEATER
AD	ACCESS DOOR	KW	KILOWATT
ADA	AMERICANS WITH DISABILITIES ACT	LAV	LAVATORY
AFF	ABOVE FINISH FLOOR	M	METER
AFG	ABOVE FINISHED GRADE	MC	MECHANICAL CONTRACTOR
AHJ	AUTHORITY HAVING JURISDICTION	MBH	1000 BTUH
ANSI	AMERICAN NATIONAL STANDARDS INSTITUTE	MH	MANHOLE
AP	ACCESS PANEL	NC	NORMALLY CLOSED
ASHRAE	AMERICAN SOCIETY OF HEATING, REFRIGERATION & AIR CONDITIONING ENGINEERS	NG	NATURAL GAS
ASME	AMERICAN SOCIETY OF MECHANICAL ENGINEERS	NIC	NOT IN CONTRACT
ASPE	AMERICAN SOCIETY OF PLUMBING ENGINEERS	NOM	NOMINAL
AWWA	AMERICAN WATERWORKS ASSOCIATION	NPW	NON POTABLE WATER
BFG	BELOW FINISHED GRADE	NTS	NOT TO SCALE
BHP	BREAK HORSEPOWER	O2	OXYGEN
BOR	BASE OF RISER	OD	OUTSIDE DIAMETER
BTU	BRITISH THERMAL UNIT	OSHA	OCCUPATIONAL SAFETY AND HEALTH ADMINISTRATION
BTUH	BRITISH THERMAL UNIT PER HOUR	P	PUMP
C	CELSIUS	PC	PLUMBING CONTRACTOR
CA	COMBUSTION AIR	PD	PUMP DISCHARGE
CA	COMPRESSED AIR	POI	PLUMBING AND DRAINAGE INSTITUTE
CGA	COMPRESSED GAS ASSOCIATION	PF	PLUMBING FIXTURE
CI	CAST IRON	PG	PRESSURE GAGE
CO	CLEANOUT	PPM	PARTS PER MILLION
CO2	CARBON DIOXIDE	PRS	PRESSURE REDUCING STATION
COND	CONDENSATE	PRV	PRESSURE REDUCING VALVE
CP	CIRCULATING PUMP	PSI	POUNDS PER SQUARE INCH
CPVC	CHLORINATED POLYVINYL CHLORIDE	PSIA	POUNDS PER SQUARE INCH ATMOSPHERE
CU	COPPER	PSIG	POUNDS PER SQUARE INCH GAUGE
CW	COLD WATER (DOMESTIC)	PVC	POLYVINYL CHLORIDE
D	DRAIN	RD	ROOF DRAIN
DIA	DIAMETER	RL	RAIN LEADER
DFU	DRAINAGE FIXTURE UNIT	RO	REVERSE OSMOSIS WATER
DN	DOWN	RPZ	REDUCED PRESSURE ZONE BACKFLOW PREVENTER
DPCO	DECK PLATE CLEANOUT	SAN	SANITARY SEWER
DWG	DRAWING	SMACNA	SHEET METAL AND AIR CONDITIONING CONTRACTORS NATIONAL ASSOCIATION
DWH	DOMESTIC WATER HEATER	SCFM	STANDARD CUBIC FOOT/MINUTE
DWV	DRAIN WASTE VENT	SCW	SOFTENED COLD WATER
EC	ELECTRICAL CONTRACTOR	SP	SUMP PUMP
EL	ELEVATION	SOFT	SQUARE FEET
ET	EXPANSION TANK	SS	STAINLESS STEEL
EWC	ELECTRIC WATER COOLER	ST	STORM SEWER
EXIST	EXISTING	T&P	TEMPERATURE & PRESSURE (RELIEF VALVE)
F	FAHRENHEIT	TD	TRENCH DRAIN
FD	FLOOR DRAIN	TDH	TOTAL DYNAMIC HEAD
FU	FIXTURE UNITS	TEMP	TEMPERATURE/TEMPORARY
FV	FLUSH VALVE	TMV	THERMOSTATIC MIXING VALVE
G	NATURAL GAS	TP	TRAP PRIMER
GAL	GALLON	TSTAT	THERMOSTAT
GALV	GALVANIZED	TW	TEMPERED WATER
GC	GENERAL CONTRACTOR	TYP	TYPICAL
GPH	GALLONS PER HOUR	UC	UNDERCUT
GPM	GALLONS PER MINUTE	UH	UNIT HEATER
H&CW	HOT AND COLD WATER	UL	UNDERWRITERS LABORATORY
HB	HOSE BIBB	UPC	UNIFORM PLUMBING CODE
HC	HEATING & HVAC CONTRACTOR	UR	URINAL
HD	HUB DRAIN	V	VENT
HP	HORSEPOWER	VB	VACUUM BREAKER
HS	HAND SINK	VTR	VENT THROUGH ROOF
HW	HOT WATER (DOMESTIC)	WC	WATER CLOSET
INV	INVERT	WCO	WALL CLEANOUT
		WH	WALL HYDRANT
		WHA	WATER HAMMER ARRESTER
		WSFU	WATER SUPPLY FIXTURE UNIT
		XA	EXHAUST AIR

PLUMBING SYMBOLS			
	- NEW PIPING AND EQUIPMENT		- GAUGE WITH BALL VALVE
	- EXISTING TO REMAIN PIPING AND EQUIPMENT		- AUTOMATIC AIR VENT
	- PIPING AND EQUIPMENT FOR REMOVAL		- MANUAL AIR VENT
	- BALL VALVE		- THERMOMETER
	- BALL VALVE (HOSE END & CAP)		- BUTTERFLY VALVE
	- BALANCING VALVE		- PIPE CAP
	- CHECK VALVE		- END OF LINE CLEAN OUT
	- CONTROL VALVE - 2 WAY		- HOSE BIBB
	- DRAIN VALVE WITH HOSE BIBB		- FLOOR DRAIN
	- FLANGED CONNECTION		- FLOOR DRAIN WITH P-TRAP
	- FUSIBLE LINK OIL SHUTOFF VALVE		- DECK PLATE CLEAN OUT
	- FLOW CONTROL VALVE		- GAS OUTLET
	- GATE VALVE		- WATER HAMMER ARRESTOR
	- GLOBE VALVE		- WALL HYDRANT
	- GAS COCK		- VACUUM BREAKER
	- LUBRICATED PLUG VALVE		- INLINE PUMP
	- PRESSURE REDUCING VALVE		- WATER METER
	- RELIEF VALVE		- SUCTION DIFFUSER
	- STRAINER WITH BLOWDOWN		- FLEXIBLE CONNECTOR
	- STRAINER WITH BLOWDOWN		- PIPE BREAK
	- SOLENOID VALVE		- PIPE FLOW ARROW
	- THREE-WAY CONTROL VALVE		- REVISION/KEYED NOTE
	- TRIPLE DUTY GLOBE VALVE		- KEYED NOTE
	- UNION		- KEYED NOTE
	- REDUCER OR INCREASER		- KEYED NOTE
	- BRANCH FROM BOTTOM OF PIPE		- POINT OF NEW CONNECTION
	- BRANCH FROM TOP OF PIPE		- LIMIT OF REMOVAL
	- PIPE ELBOW DN		- SAW CUT FLOOR
	- PIPE ELBOW UP		
	PIPE FLOW ARROW		
	BELOW SLAB PIPING		
	COLD WATER PIPING		
	HOT WATER PIPING		
	HOT WATER RECIRC PIPING		
	INDIRECT WASTE PIPING		
	SANITARY PIPING		
	DRAIN PIPING		
	VENT PIPING		
	NATURAL GAS PIPING		
	SANITARY PIPING (BELOW GRADE)		

- GENERAL PLUMBING NOTES:
- DRAWINGS ARE DIAGRAMMATIC AND INDICATE GENERAL ARRANGEMENT OF SYSTEMS AND WORK INCLUDED IN THE CONTRACT. IT IS NOT INTENDED TO SPECIFY OR SHOW EVERY OFFSET, FITTING OR COMPONENT; HOWEVER, CONTRACT DOCUMENTS REQUIRE COMPONENTS AND MATERIALS WHETHER OR NOT INDICATED OR SPECIFICALLY SPECIFIED TO MAKE THE SYSTEMS BEING INSTALLED COMPLETE, CODE COMPLIANT, TESTED AND OPERATIONAL.
 - CONTRACTOR SHALL FIELD VERIFY ALL LOCATIONS, DIMENSIONS AND ELEVATIONS PRIOR TO INSTALLATION.
 - ALL MATERIALS, EQUIPMENT, METHODS OF INSTALLATION, REMOVALS AND DISPOSAL SHALL BE IN ACCORDANCE WITH THE STANDARDS, REGULATIONS, CODES, ORDINANCES, AND LAWS OF LOCAL, STATE, AND FEDERAL GOVERNMENTS, AND OTHER AUTHORITIES THAT HAVE LAWFUL JURISDICTION.
 - PERFORM WORK, PROVIDE MATERIALS AND EQUIPMENT FOR SYSTEMS SHOWN, SPECIFIED AND DESCRIBED ON DRAWINGS. COMPLETELY COORDINATE ALL TRADES OF THIS CONTRACT AND PROVIDE COMPLETE AND FULLY FUNCTIONAL INSTALLATION. ALL WORK IN THIS SET TO BE COMPLETED UNDER THIS CONTRACT, UNLESS OTHERWISE INDICATED.
 - PROTECT ALL EXISTING AND NEW BUILDING ELEMENTS FROM DAMAGE. CONTRACTOR SHALL RESTORE ALL DAMAGED ELEMENTS TO ORIGINAL OR BETTER CONDITION.
 - WORK SHALL BE EXECUTED IN A WORKMANLIKE MANNER AND SHALL PRESENT NEAT, RECTILINEAR APPEARANCE WHEN COMPLETED. MAINTAIN MAXIMUM HEAD ROOM AT ALL TIMES. DO NOT RUN PIPES, DUCTS, AND CONDUIT EXPOSED UNLESS SHOWN AND NOTED TO BE EXPOSED ON DRAWINGS.
 - MATERIALS AND EQUIPMENT SHALL BE NEW AND INSTALLED ACCORDING TO MANUFACTURER'S INSTRUCTIONS AND RECOMMENDATIONS. MAINTAIN MANUFACTURER'S EQUIPMENT CLEARANCES.
 - CONTRACTOR IS RESPONSIBLE FOR ALL WORK RELATED TO ISOLATING, SHUTTING DOWN, DRAINING, FILLING AND TESTING SYSTEMS TO ALLOW FOR COMPLETION OF WORK. INTERRUPTIONS TO EXISTING SERVICES AND SYSTEMS SHALL BE AS SHORT AS POSSIBLE AND AT A TIME AND DURATION APPROVED BY THE OWNER AND UTILITY AS APPLICABLE. INCLUDE ALL PREMIUM TIME ASSOCIATED WITH INTERRUPTIONS. ALL SYSTEM INTERRUPTIONS SHALL BE SCHEDULED WITH OWNER, UTILITY AND COORDINATED WITH OTHER TRADE WORK.
 - ALL EQUIPMENT PIPING, WIRING, INSULATION ETC. INSTALLED IN HVAC AIR PLENUM SPACES SHALL MEET CODE REQUIREMENTS FOR SMOKE AND COMBUSTIBILITY.
 - SEAL ALL PENETRATIONS THROUGH FIRE RATED WALLS, PARTITIONS AND FLOORS WITH UL RATED MATERIALS/METHODS EQUIVALENT TO FIRE RATING OF ASSEMBLY.
 - PROVIDE PROPER ACCESS TO EQUIPMENT THAT REQUIRES INSPECTION, REPLACEMENT OR REPAIR. ACCESS PANELS/DOORS SHALL BE A MINIMUM OF 12"x12", UNLESS OTHERWISE NOTED.
 - DO NOT SUPPORT EQUIPMENT FROM SUSPENDED CEILINGS. ALL SUPPORT SHALL BE FROM BUILDING STRUCTURE OR FROM CEILING SUSPENSION SYSTEM WHICH HAS BEEN REINFORCED. SUPPORTS SHALL BE SELECTED AND INSTALLED TO PROVIDE A VIBRATION FREE INSTALLATION.
 - PLUMBING CONTRACTOR IS RESPONSIBLE FOR JETTING/SNAKING ALL SANITARY WASTE LINES (ALL FLOOR DRAINS) SHOWN ON THE DRAWINGS TO BE FULLY OPERATIONAL.
 - CLEANING DURING PLUMBING WORK: THE MECHANICAL ROOM AND ROOMS WHERE WORK WILL BE DONE TO MINIMIZE DISTURBANCE IN THE BUILDINGS, WORKERS ARE TO USE PATHWAYS AND FACILITIES AGREED UPON WITH THE DISTRICT DESIGNEE IN WRITING. THE AREA OUTSIDE THE BUILDING WHERE CUTTING, WELDING OR STORAGE IS ALLOWED IS TO BE FENCED AT ALL TIMES. THE CONTRACTOR WILL ON A DAILY BASIS CLEAN THE GROUNDS AND THE BUILDING OF ANY DEBRIS OR GARBAGE GENERATED BY THEIR WORK.
 - ALL WORKERS ON SITE MUST WEAR HARD HATS AND EYE PROTECTION AT ALL TIMES. (ON SCHOOL GROUNDS)
 - CONTRACTOR TO EMPTY GENERATOR OIL TANK AND TRANSFER FUEL TO A TEMPORARY TANK AS DESIGNATED AREA BY YPS. ASSUME 500 GALLONS OF DIESEL FUEL FOR BIDDING PURPOSE ONLY. PLUG ALL HOLES IN TANK WHEN PROVIDING DEMO AND NEW WORK. PRESSURE TEST TANK AND RECOMMISSION TANK PER CODES.
 - CONTRACTOR TO EMPTY HEATING OIL TANK AND TRANSFER FUEL TO TEMPORARY TANK AS DESIGNATED AREA BY YPS. ASSUME 100 GALLONS OF HEATING FUEL FOR BIDDING PURPOSE ONLY. PLUG ALL HOLES IN TANK WHEN PROVIDING DEMO AND NEW WORK. PRESSURE TEST TANK AND RECOMMISSION TANK PER CODES.
 - CONTRACTOR TO PROVIDE PLUGS FOR EXISTING PARKING AREA DRAINS AND DIVERT WATER AROUND WORK AREAS. COORDINATE WITH DISTRICT FOR LOCATIONS



- DAMAGE TO WALLS AND/OR CEILINGS DURING YOUR SCHEDULED WORK
- CONTRACTORS NOT TO DAMAGE EXISTING WALLS THAT ARE TO REMAIN. THIS INCLUDES WALLS WHERE ONLY A PORTION OR SIDE OF THE WALL IS TO REMAIN AND THE OTHER SIDE OF WALLS IS TO BE MODIFIED OR REPLACED. CONTRACTOR IS RESPONSIBLE FOR REPAIR TO DAMAGE WALLS AND TO ANY PORTION OF WALLS THAT ARE EXISTING TO REMAIN, EVEN IF NOT SPECIFICALLY MARKED AS SUCH.
 - CONTRACTOR IS RESPONSIBLE FOR REPAIR TO DAMAGE CEILINGS AND TO ANY PORTION OF CEILINGS THAT ARE EXISTING TO REMAIN, EVEN IF NOT SPECIFICALLY MARKED AS SUCH
- CONTRACTORS' COORDINATION NOTE:
- ALL CONTRACTORS ARE REQUIRED TO REVIEW THE CONTRACT DRAWINGS FOR ALL TRADES AND DETERMINE NECESSARY COORDINATION BETWEEN TRADES PRIOR TO BIDDING. ANY DISCREPANCIES, COMMENTS, OR QUESTIONS ARE TO BE SUBMITTED TO THE ENGINEER BY RFI.

ENGINEER:

Eisenbach & Rohke Engineering P.C.
201 Stevens Street • Union, NY 10987
PH: 914.892.4444 Fax: 914.752-5362
www.eandrp.com

**FULLER
D'ANGELO
P.C.**

**ARCHITECTS
PLANNERS**

48 KNOLWOOD ROAD
ELMSFORD NEW YORK 10523
TEL: 914.892.4444
FAX: 914.892.1917
WWW.FULLERDANGELO.COM
Copyright 2020 All Rights Reserved by FULLER & D'ANGELO P.C.

FILE PATH: N:\1 - PROJECT DIRECTORIES\Yonkers Public Schools\Martin Luther King School\Y19MLK01 CIP# 10875 YPS MLK Roof, Boiler, Window, & Select Interior Upgrades\CAD\Tank Room\Y19mlk01.p001.dwg

BID SET 11.22.2022
S.E.D. ADDENDUM 11.29.2021
S.E.D. SUBMISSION 04.09.2021

REVISION DATE
DATE 11.22.2022
DRAWN BY
CHECKED BY
SHEET SIZE 30"x42"
SCALE AS SHOWN
SHEET TITLE

ABBREVIATIONS AND SYMBOLS

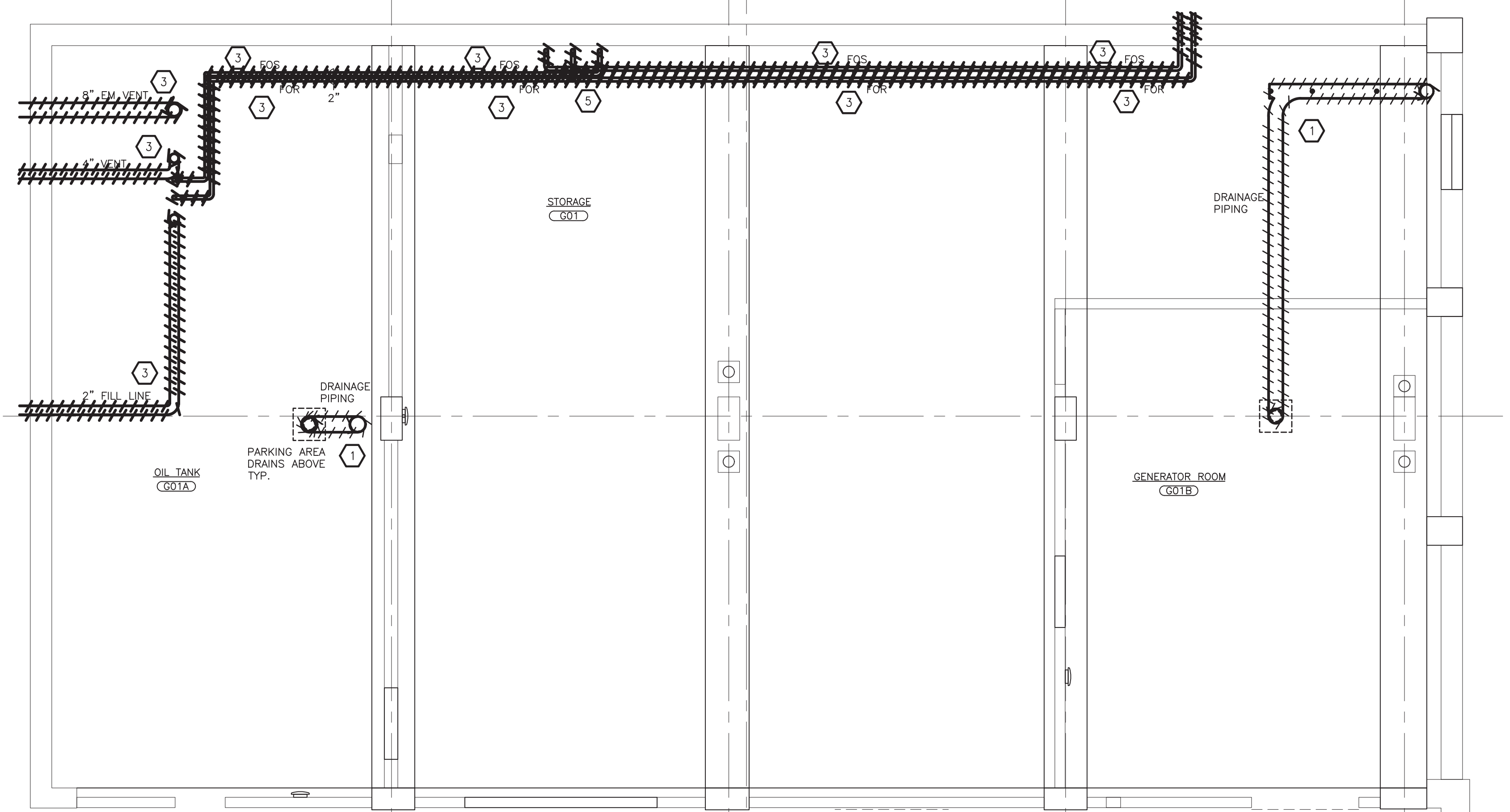
SHEET NO.

P-001

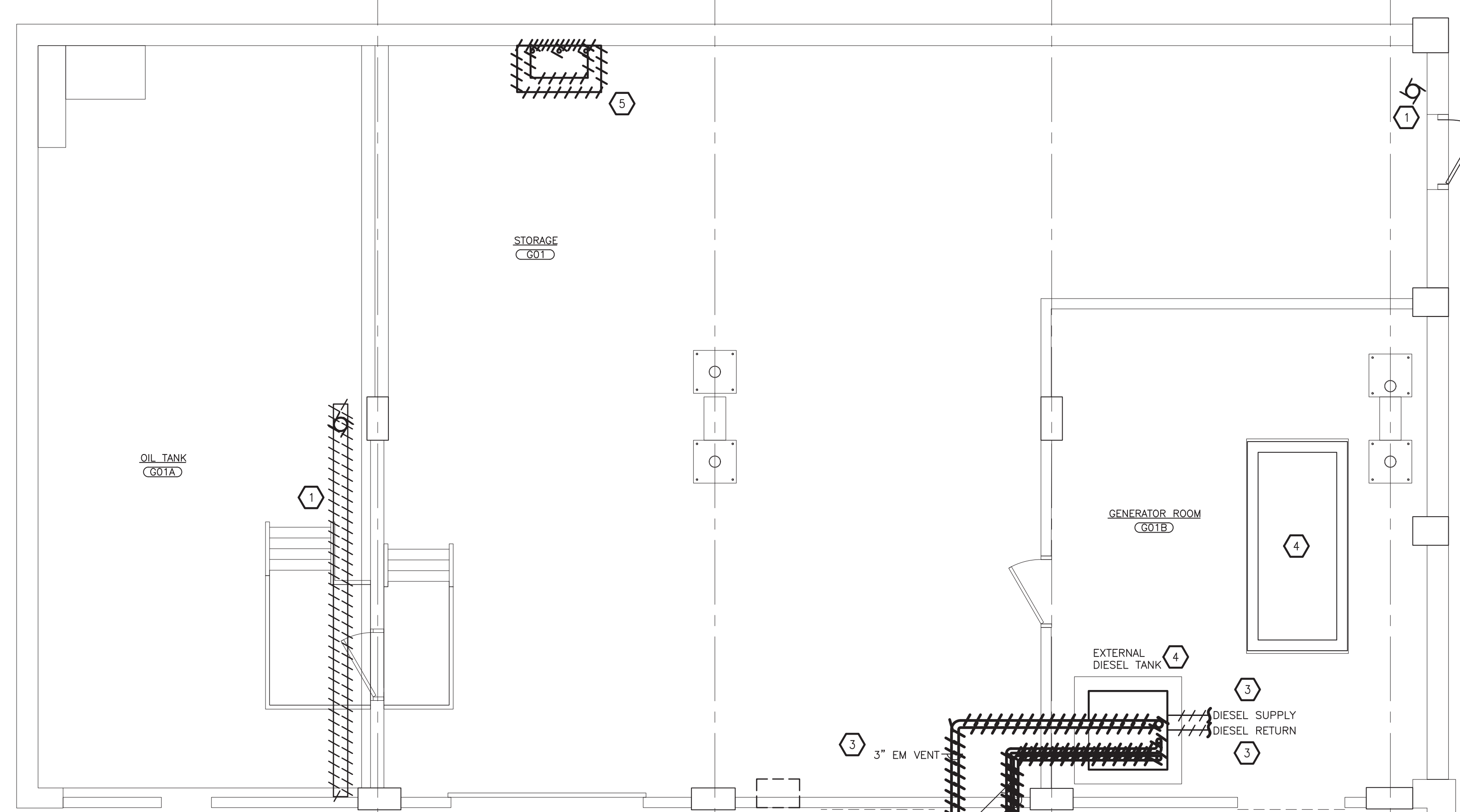
ENGINEER STAMP:

STATE OF NEW YORK
JULIUS ROSENTHAL
No. 08845
REGISTERED PROFESSIONAL ENGINEER

**YONKERS PUBLIC SCHOOLS
STORAGE AREA RENOVATIONS
Martin Luther King Elementary School**
135 Locust Hill Avenue, Yonkers N.Y. 10701
S.E.D.# 66-25-00-01-0-233-009



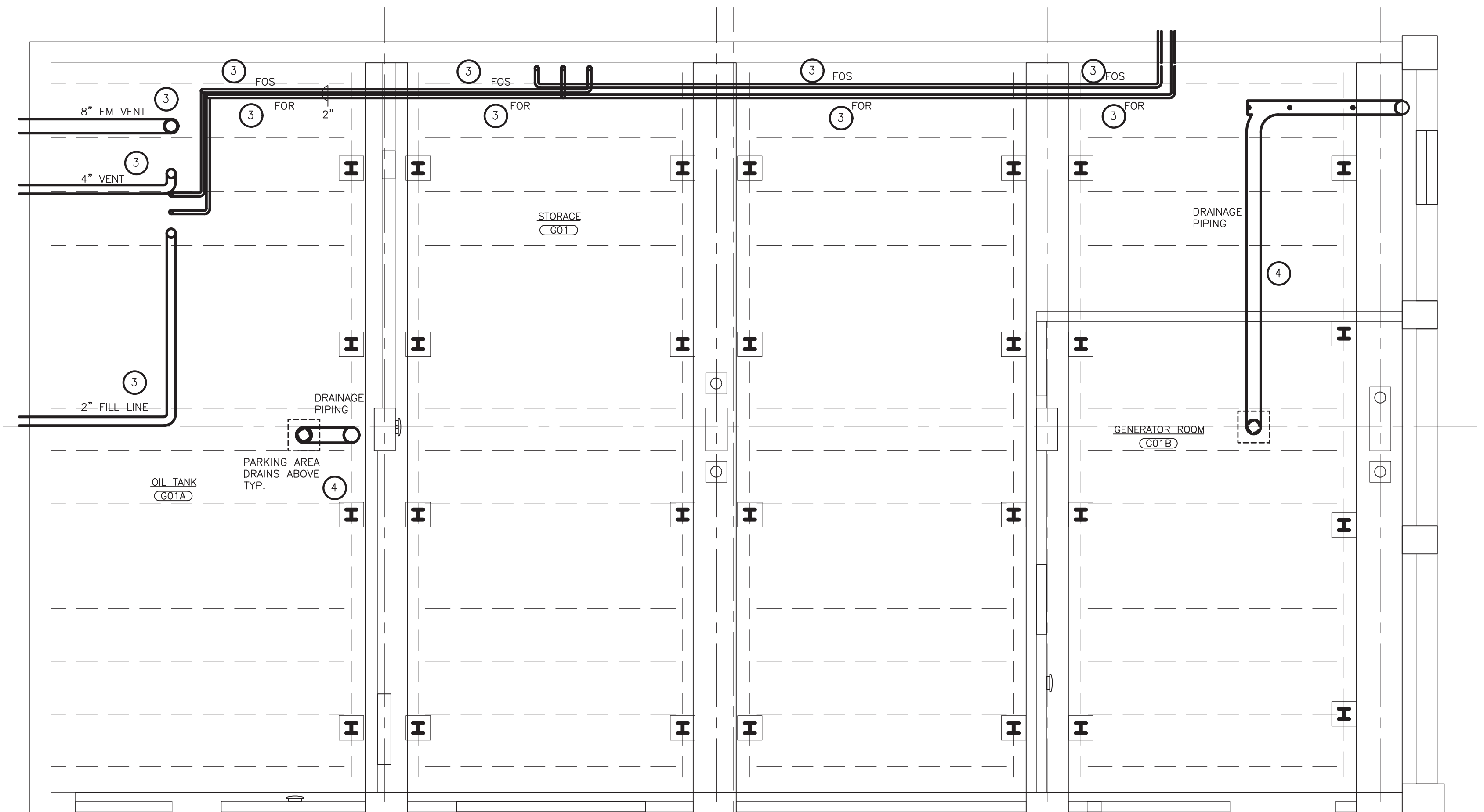
2 PARTIAL REFLECTED CEILING PLAN - DEMOLITION
SCALE: 1/4" = 1'-0"



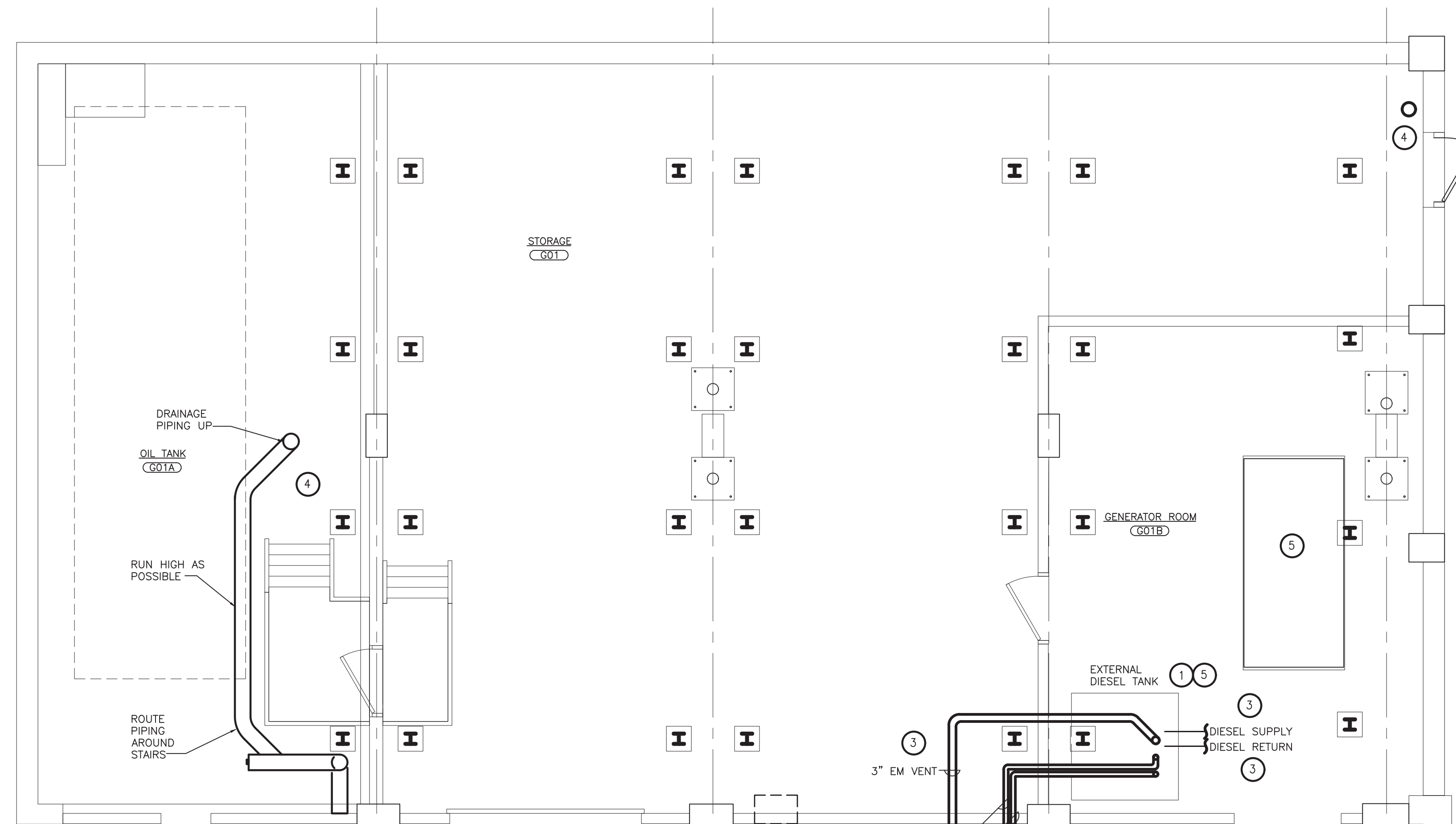
1 PARTIAL GROUND FLOOR PLAN - DEMOLITION
SCALE: 1/4" = 1'-0"

KEYED NOTES — DEMOLITION

- 1 REMOVE AND DISPOSE OF DRAIN PIPING. TEMPORARILY CAP AND SEAL DRAINS ABOVE. CONTRACTOR TO PROVIDE PROVISIONS TO PROPERLY DISPOSE OF RAIN WATER FROM PARKING AREA WHILE DRAINS ARE CAPPED.
- 2 DRAIN FUEL OIL AND DIESEL FUEL FROM EXISTING PIPING INTO SEPARATE CONTAINERS. EMPTY EXTERNAL DIESEL TANK AND DIESEL TANK UNDER GENERATOR AND STORE FUEL FROM BOTH TANKS. STORE FUELS IN NEW AND CLEAN TEMPORARY CONTAINERS. SEAL AND LABEL CONTAINERS ACCORDINGLY. STORE IN VENTILATED OWNER SPECIFIED LOCATION.
- 3 REMOVE FUEL OIL PIPING, DIESEL FUEL PIPING, AND VENT PIPING. TEMPORARILY CAP REMAINING PIPING.
- 4 DISCONNECT DIESEL FUEL TANK FROM FLOOR. SAFELY MOVE AROUND GENERATOR ROOM AS NECESSARY DURING RENOVATION. COVER EXTERNAL DIESEL FUEL TANK AND CAP ALL OPEN PIPING CONNECTIONS.
- 5 REMOVE EXISTING OIL MONITORING EQUIPMENT IN ITS ENTIRETY AND DISCARD.



4 PARTIAL REFLECTED CEILING PLAN - NEW WORK
SCALE: 1/4" = 1'-0"

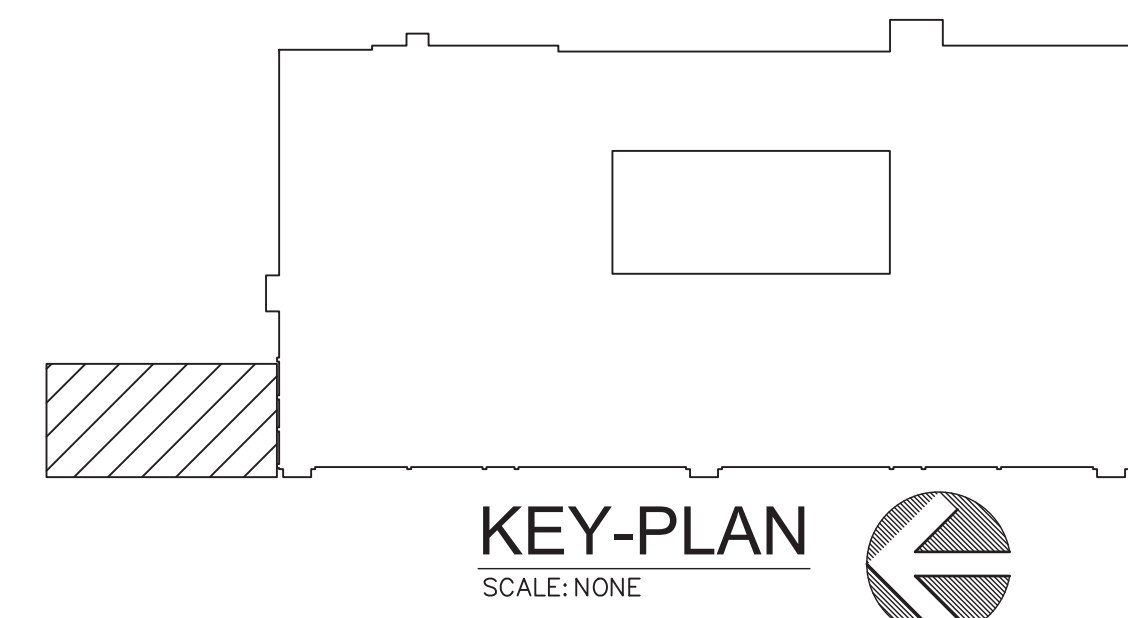


3 PARTIAL GROUND FLOOR PLAN - NEW WORK
SCALE: 1/4" = 1'-0"

KEYED NOTES — NEW WORK

- 1 RECONNECT EXTERNAL DIESEL FUEL TANK TO FLOOR. MODIFY CONCRETE PAS AS NEEDED
- 2 NOT USED
- 3 PROVIDE NEW FUEL OIL PIPING, DIESEL FUEL PIPING, AND VENT PIPING (FIELD VERIFY SIZE) (PIPING WILL BE CLOSE TO UNDERSIDE OF DECKING)
- 4 PROVIDE NEW DRAIN PIPING IN SAME LOCATION AS EXISTING, OFFSET AROUND COLUMN AS REQUIRED. CONNECT AND SEAL TO DRAINS ABOVE. REMOVE CAPS FROM DRAINS ABOVE AND RETURN THEM TO SERVICE.
- 5 RETURN STORED FUEL OIL AND DIESEL FUEL TO THEIR PROPER STORAGE TANKS. PRIME SUPPLY AND RETURN PIPING.
- 6 COORDINATE WITH ELECTRICAL AND MECHANICAL CONTRACTORS TO INITIATE STARTUP AND TESTING OF BOILERS AND PERMANENT GENERATOR.

NOTE: 1. PROVIDE NECESSARY ADJUSTMENTS WHEN REINSTALLING EQUIPMENT, PIPING, ETC.
2. PROVIDE PROTECTION AROUND TANK AND CONTENTS AS NECESSARY FOR INSTALLATION OF DEMO/NEW WORK



KEY-PLAN
SCALE: NONE

IT IS A VIOLATION OF THE LAW FOR ANY PERSON UNLESS HE IS ACTING UNDER THE DIRECTION OF A LICENSED PROFESSIONAL ARCHITECT/ENGINEER TO ALTER THIS DRAWING IN ANY WAY. ALL ALTERATIONS MUST HAVE THE SEAL, AFFIXED ALONG WITH A DESCRIPTION OF THE ALTERATION, THE SIGNATURE AND DATE. COPYRIGHT © 2019

ENGINEER:
Eisenbach & Ruhnke Engineering, P.C.
291 Geddes Street - Union, NY 13501
Ph: 516-736-1188, Fax: 516-736-8865
www.erengco.com

**FULLER
D'ANGELO
P.C.**

**ARCHITECTS
PLANNERS**

48 KNOLLWOOD ROAD
ELMSFORD NEW YORK 10523
TEL: 914-892-6666
FAX: 914-892-1717
WWW.FULLERDANGELO.COM
Copyright 2020 All Rights Reserved by FULLER & D'ANGELO P.C.

ENGINEER STAMP:



**YONKERS PUBLIC SCHOOLS
STORAGE AREA RENOVATIONS**
Martin Luther King Elementary School
135 Locust Hill Avenue, Yonkers N.Y. 10701
S.E.D.# 06-25-0047-0234-009

E&R PROJECT NO. Y19MLK01
YPS NO. 10875

RD SET
S.E.D. JORDAN
S.E.D. SUBMISSION
11.22.2022
11.29.2021
04.09.2021

REVISION
DATE
11.22.2022

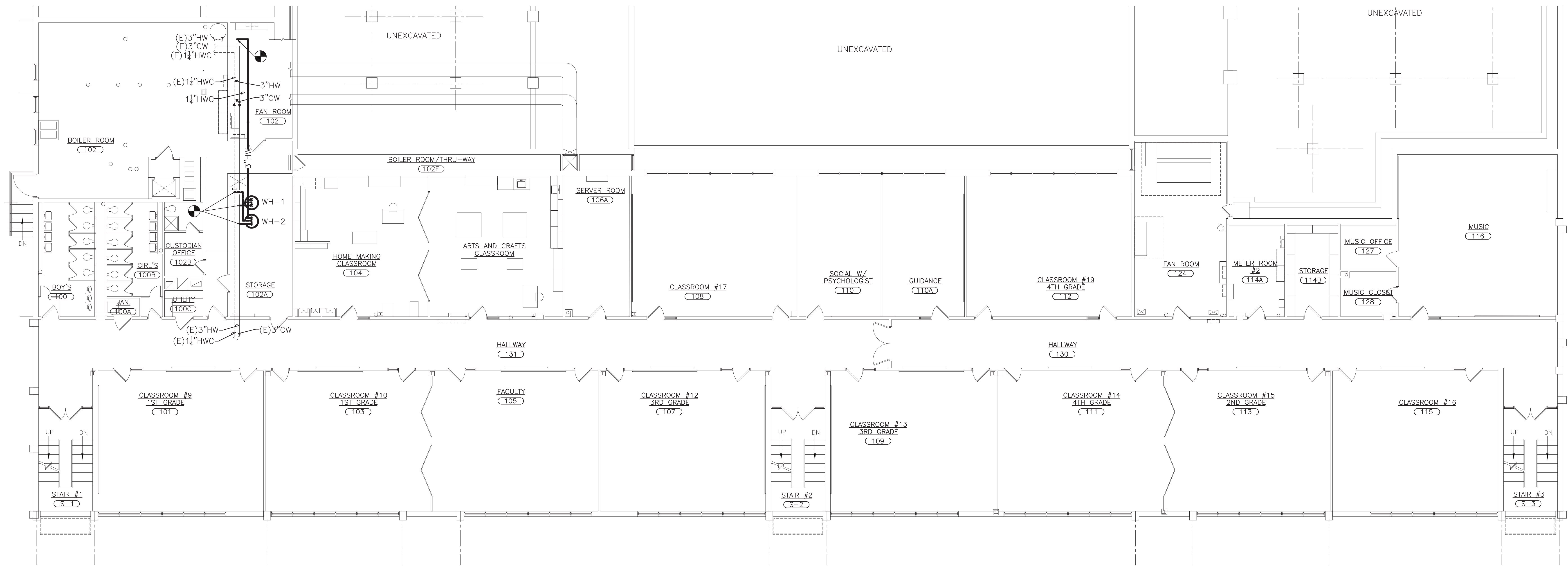
DRAWN BY
CHECKED BY
SHEET SIZE 30"x42"
SCALE AS SHOWN

SHEET TITLE
PARTIAL GROUND
FLOOR PLAN - TANK
ROOM - DEMOLITION
AND NEW WORK

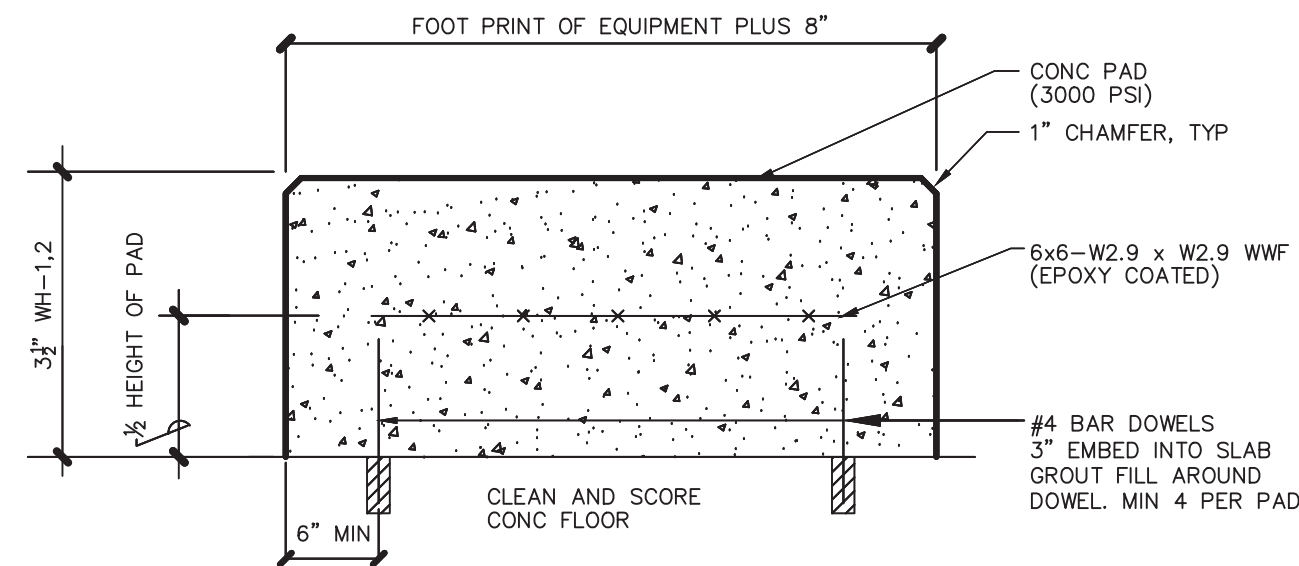
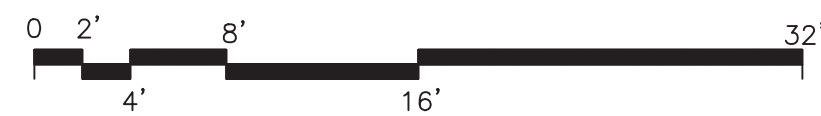
SHEET NO.

P-110

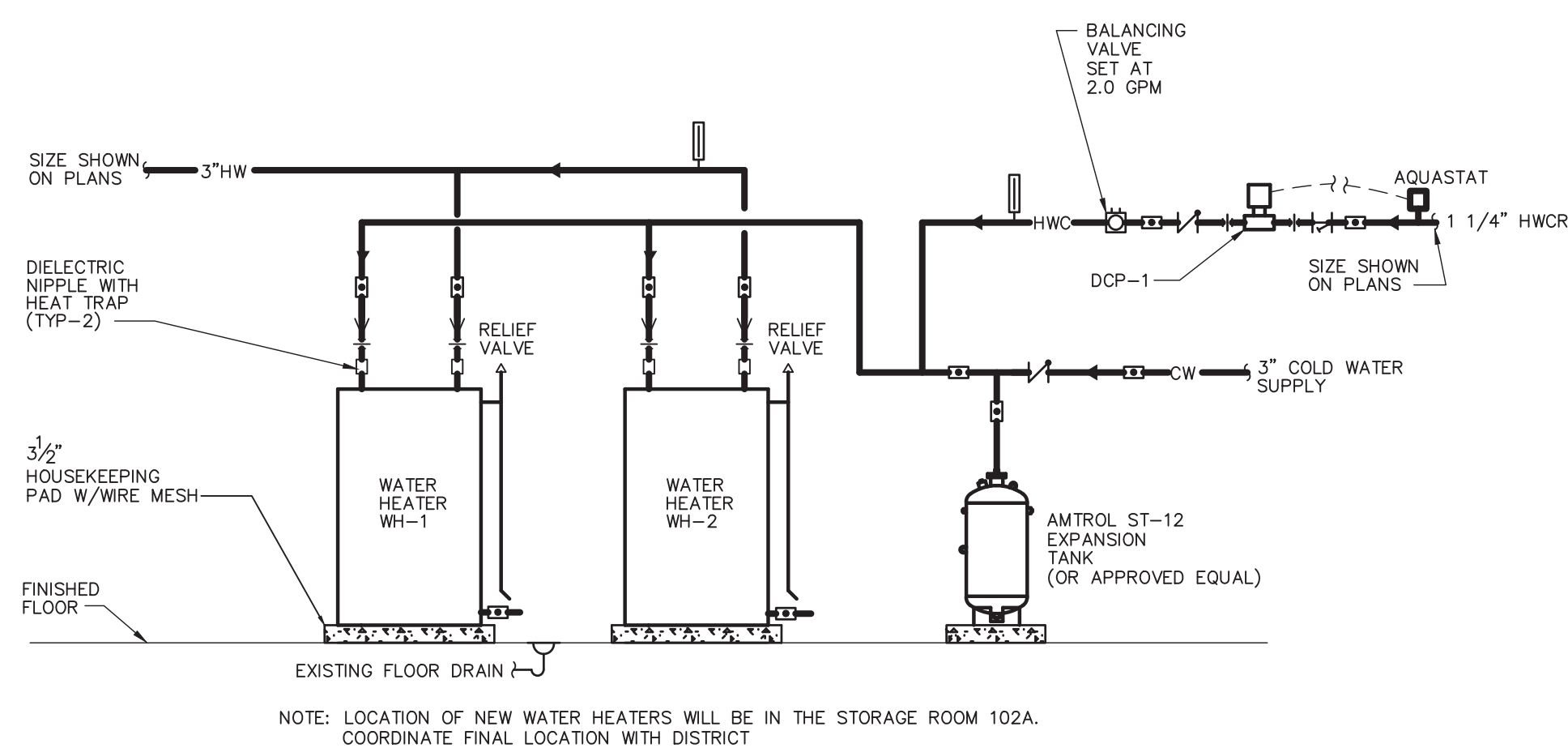
FILE PATH - N:\1 - PROJECT DIRECTORIES\Yonkers Public Schools\Martin Luther King School\Y19MLK01.dwg YPS MLK Roof, Boiler, Window, & Select Interior Upgrades\CAD\Tank Room\Y19MLK01.p10\PT11.dwg



1 PARTIAL FIRST FLOOR PLAN - NEW WORK
SCALE: 1/8" = 1'-0"



2 CONCRETE PAD DETAIL
SCALE: NONE



3 (WH-1&2) PIPING CONNECTION
AT WATER HEATER DETAIL
SCALE: NONE

PUMP SCHEDULE								
NO.	LOCATION	SERVICE	GPM	HEAD FT WATER	MOTOR			
					WATTS/HP	VOLTAGE	PHASE	MAX. RPM
DCP-1	MECHANICAL ROOM	CIRCULATING	2	15	1	115	1	3300

NOTE: PROVIDE DCP-1, LEAD FREE MODEL AND AUTOMATIC TIMER AND AQUASTAT.

WATER HEATER SCHEDULE							
NO.	SERVING	TYPE	KW	GAL.	GALLONS/ HOUR RECOVERY	TEMP RISE DEG F	DESIGN MAKE
WH-1	BUILDING	ELECTRIC	11	55	25	90	RUUD PROUE55-T2-RU-CG
WH-2	BUILDING	ELECTRIC	11	55	25	90	RUUD PROUE55-T2-RU-CG

NOTE: PROVIDE DUAL ELEMENTS 5500 WATT TO RUN SIMULTANEOUS

ENGINEER:

Eisenbach & Ruhke Engineering, P.C.
291 Calverton Street - Union, NY 11550
Tel: 516-692-4444
Fax: 516-692-1717
www.eandru.com

FULLER D'ANGELO P.C.

ARCHITECTS PLANNERS

48 KNOLLWOOD ROAD
ELMHURST NEW YORK 10823
TEL: 914-892-4444
FAX: 914-892-1717
WWW.FULLERDANGELO.COM
Copyright 2020 All Rights Reserved by FULLER & D'ANGELO P.C.

ENGINEER STAMP:

STATE OF NEW YORK
JAMES J. FULLER
No. 05944
Professional Engineer

**YONKERS PUBLIC SCHOOLS
STORAGE AREA RENOVATIONS
Martin Luther King Elementary School**
135 Locust Hill Avenue, Yonkers N.Y. 10701
S.E.D.# 06254041-0204-09

E&R PROJECT NO. Y19MK01
YPS NO. 10875

BD SET 11.22.2022
S.E.D. ADDENDUM 11.29.2021
S.E.D. SUBMISSION 04.09.2021

REVISION DATE
DATE 11.22.2022
DRAWN BY
CHECKED BY
SHEET SIZE 30"x42"
SCALE AS SHOWN

SHEET TITLE
PARTIAL FIRST FLOOR
PLAN - NEW WORK,
DETAILS AND
SCHEDULES

SHEET NO.