







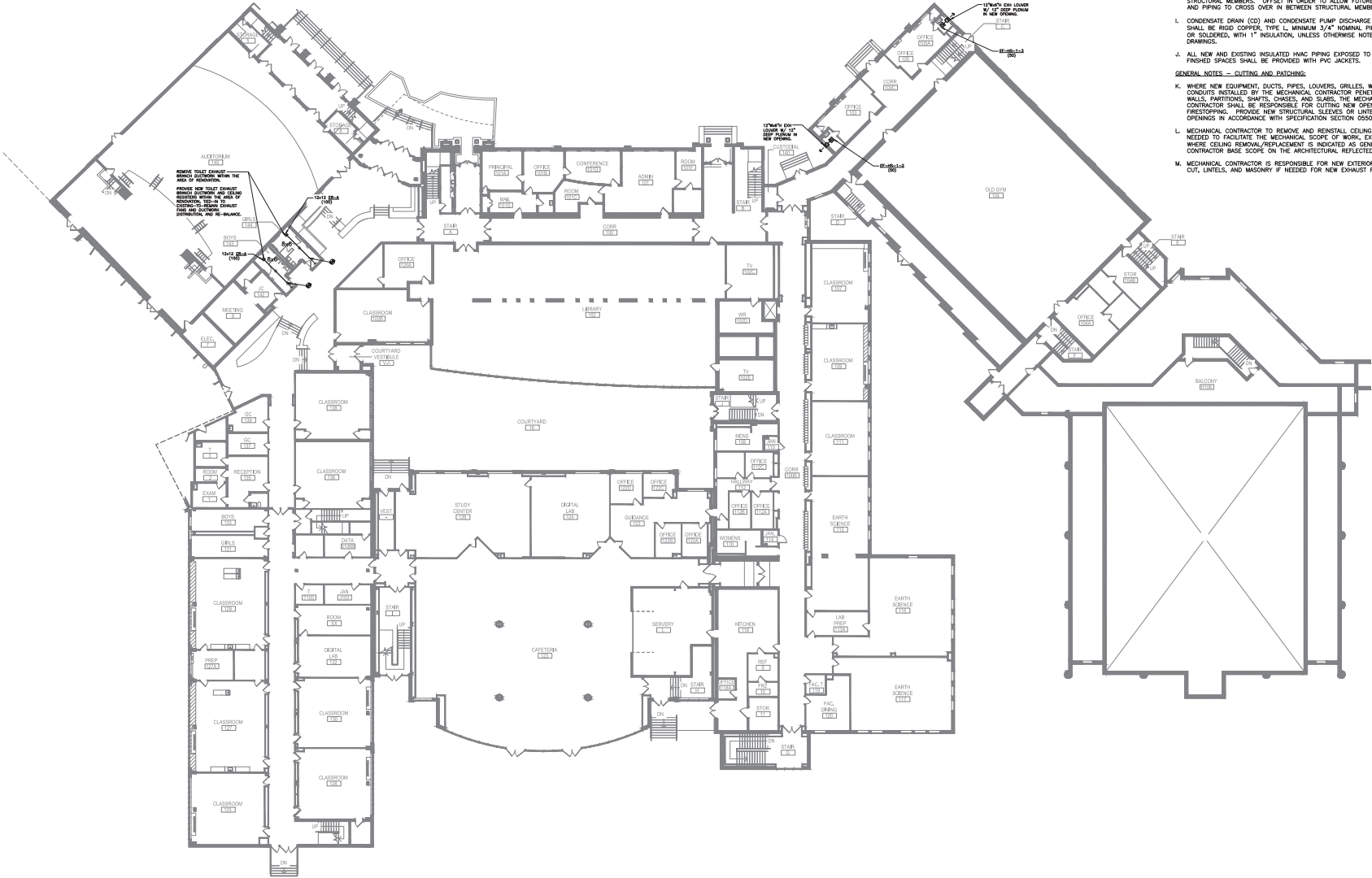
FAN SCHEDULE																														
DESIGNATION	LOCATION	AREA SERVED	SERVICE	CONFIGURATION	DRIVE TYPE	AIRFLOW (CFM)	EXTERNAL STATIC PRESSURE (INWG)	BHP (NEMA)	RPM (NEMA)	VOLTS	PH/3	FLA	ELECTRICAL DATA												PHYSICAL DIMENSIONS (LBS)	WEIGHT (LBS)	SONES	MANUFACTURER	MODEL	REMARKS
													DISCONNECT		STARTER		ENCLOSURE		EMER. POWER		ENCLOSURE		EMER. POWER							
													BY E.C. OR MANUF.	LOCATION	TYPE	ENCLOSURE TYPE	BY M.C. OR MANUF.	LOCATION	TYPE	ENCLOSURE TYPE	EMER. POWER (Y/N)	PHYSICAL DIMENSIONS (LxWxH)	WEIGHT (LBS)	SONES	MANUFACTURER	MODEL	REMARKS			
EF-HS-1-2	OFFICE 103	BATHROOM	TOILET EXHAUST	CEILING	DIRECT	50	0.25	N/A	887	6W	115	1 (60/0.20)	E.C.	PLENUM	DISC	NEMA-1	MANUF.	N/A	N/A	N/A	N	110X140	12	2	GREENHECK	SP-ASB-VG	SEE NOTES BELOW			
EF-HS-1-3	OFFICE 104	BATHROOM	TOILET EXHAUST	CEILING	DIRECT	50	0.25	N/A	887	6W	115	1 (60/0.20)	E.C.	PLENUM	DISC	NEMA-1	MANUF.	N/A	N/A	N/A	N	110X140	12	2	GREENHECK	SP-ASB-VG	SEE NOTES BELOW			

NOTES:

1. PROVIDE THE FOLLOWING:

1.1. BUILT-IN BAROMETRIC BACKDRAFT DAMPER.

1.2. ECM MOTOR CONTROLLER INTEGRAL TO FAN MOTOR, WITH CONTACTS SUITABLE FOR BMS TIE-IN, GREENHECK "VARI-GREEN" OR EQUAL.



**DEMOLITION GENERAL NOTES — CONTROLS:**

A. UNLESS OTHERWISE NOTED, CONTROLS FOR MECHANICAL EQUIPMENT TO BE REMOVED UNDER THIS PROJECT (INCLUDING BUT NOT LIMITED TO THERMOSTATS, WIREMESH, CONDUITS, AND JUNCTION BOXES) WHICH ARE ACCESSIBLE AFTER GENERAL DEMOLITION SHALL BE REMOVED BACK TO EXISTING WALLS, PARTITIONS, SHAFTS, CHASES, AND SLABS, WHERE CONTROLS COMPONENTS ARE REMOVED ON BOTH SIDES OF A WALL OR SLAB, ALSO REMOVE THE PORTION PENETRATING THE WALL OR SLAB, WHERE CONTROLS COMPONENTS ENTER A SHAFT OR CHASE, CAP 3/4" BEHIND EXISTING SURFACE.

**DEMOLITION GENERAL NOTES — CUTTING AND PATCHING:**

B. WHERE EXISTING EQUIPMENT, DUCTS, PIPES, LOUVERS, GRILLES, CONTROLS, WIRES, CONDUITS, AND PNEUMATIC TUBING THROUGH EXISTING WALLS, PARTITIONS, SHAFTS, CHASES, AND SLABS ARE REMOVED BY THE MECHANICAL CONTRACTOR, THE MECHANICAL CONTRACTOR SHALL BE RESPONSIBLE FOR INFILLING AND REPAIRING OPENINGS TO MATCH EXISTING CONSTRUCTION, INCLUDING FIRE RATING, SMOKE RATING, INSULATION VALUE, MOISTURE BARRIER, FINISHING, AND GENERAL FINISH APPEARANCE. WHERE SURFACE-MOUNTED COMPONENTS ARE REMOVED, REPAIR SURFACE FINISHES TO MATCH EXISTING.

**GENERAL NOTES — DUCTWORK:**

A. BRANCH DUCTS TO INDIVIDUAL DIFFUSERS AND REGISTERS SHALL BE THE SAME SIZE AS THE DIFFUSER OR REGISTER NECK, UNLESS OTHERWISE NOTED.

B. ALL DUCTWORK SHALL BE INSTALLED TIGHT TO BOTTOM OF STRUCTURAL MEMBERS UNLESS OTHERWISE NOTED OR ABSOLUTELY REQUIRED BY FIELD CONDITIONS.

C. DO NOT INSTALL DUCTWORK DIRECTLY UNDER AND PARALLEL TO THE WEB OF STRUCTURAL MEMBERS. OFFSET IN ORDER TO ALLOW FUTURE DUCTWORK AND PIPING TO CROSS OVER IN BETWEEN STRUCTURAL MEMBERS.

D. BRANCH DUCTS TO INDIVIDUAL DIFFUSERS AND REGISTERS SHALL BE PROVIDED WITH VOLUME DAMPERS, WHETHER OR NOT THE VOLUME DAMPERS ARE SHOWN ON PLAN.

E. VOLUME DAMPERS LOCATED ABOVE UNACCESSIBLE CEILING SHALL BE CABLE OPERATED TYPE, WITH CABLE OPERATORS LOCATED IN ACCESSIBLE LOCATIONS AND CLEARLY LABELED FOR DIFFUSER OR REGISTER SERVED.

F. UNLESS OTHERWISE NOTED, ALL EXPOSED DUCTWORK IN FINISHED SPACES SHALL BE SPIRAL ROUND OR FLAT OVAL TYPE, WITH SOLID OUTER WALL, PERFORATED INNER WALL, 1 INCH THICK INTERSTITIAL ACOUSTICAL LINING, AND FLAT SEAMS.

**GENERAL NOTES — PIPING:**

G. ALL PIPING SHALL BE INSTALLED TIGHT TO BOTTOM OF STRUCTURAL MEMBERS UNLESS OTHERWISE NOTED OR ABSOLUTELY REQUIRED BY FIELD CONDITIONS.

H. DO NOT INSTALL PIPING DIRECTLY UNDER AND PARALLEL TO THE WEB OF STRUCTURAL MEMBERS. OFFSET IN ORDER TO ALLOW FUTURE DUCTWORK AND PIPING TO CROSS OVER IN BETWEEN STRUCTURAL MEMBERS.

I. CONDENSATE DRAIN (CD) AND CONDENSATE PUMP DISCHARGE (PD) PIPING SHALL BE RIGID COPPER, TYPE L, MINIMUM 3/4" NOMINAL PIPE SIZE, BRAZED OR SOLDERED, WITH 1" INSULATION, UNLESS OTHERWISE NOTED ON DRAWINGS.

J. ALL NEW AND EXISTING INSULATED HVAC PIPING EXPOSED TO VIEW IN FINISHED SPACES SHALL BE PROVIDED WITH PVC JACKETS.

**GENERAL NOTES — CUTTING AND PATCHING:**

K. WHERE NEW EQUIPMENT, DUCTS, PIPES, LOUVERS, GRILLES, WIRES, AND CONDUITS INSTALLED BY THE MECHANICAL CONTRACTOR PENETRATE EXISTING WALLS, PARTITIONS, SHAFTS, CHASES, AND SLABS, THE MECHANICAL CONTRACTOR SHALL BE RESPONSIBLE FOR CUTTING NEW OPENINGS AND PRESTRESSING. PROVIDE NEW STRUCTURAL SLEEVES OR LINTELS FOR NEW OPENINGS IN ACCORDANCE WITH SPECIFICATION SECTION 055500.

L. MECHANICAL CONTRACTOR TO REMOVE AND REINSTALL CEILING TILES AS NEEDED TO FACILITATE THE MECHANICAL SCOPE OF WORK, EXCEPT IN AREAS WHERE CEILING REMOVAL/REPLACEMENT IS INDICATED AS GENERAL CONTRACTOR BASE SCOPE ON THE ARCHITECTURAL REFLECTED CEILING PLANS.

M. MECHANICAL CONTRACTOR IS RESPONSIBLE FOR NEW EXTERIOR WALL OPENING CUT, LINTELS, AND MASONRY IF NEEDED FOR NEW EXHAUST FANS.

EASTCHESTER  
UNION FREE  
SCHOOL DISTRICT  
2022 CAPITAL PROJECT  
PHASE 4  
HIGH SCHOOL

ARCHITECT  
**MEMASI**  
2 LYON PLACE  
WHITE PLAINS, NY 10611  
914.515.0111  
MEMASI@GMAIL.COM

MECHANICAL/ELECTRICAL/PLUMBING CONSULTANT  
STANTEC  
30 OAK STREET, SUITE 400  
STAMFORD, CT 06905

HAZARDOUS MATERIALS CONSULTANT  
WSP  
ONE PEARL PLAZA  
290 W 34TH ST, 4TH FLOOR  
NEW YORK, NY 10014

ISSUED FOR BID 11/06/2024  
DATE

KEY PLAN



PROJECT NO. 6H0401-004-001-024

MEMASI PROJECT NO. 102-2301

MECHANICAL PLAN -  
FIRST FLOOR

HS M101

© 2023 MEMASI ALL RIGHTS RESERVED