



1 MASONRY REPAIRS  
A-300 N.T.S.



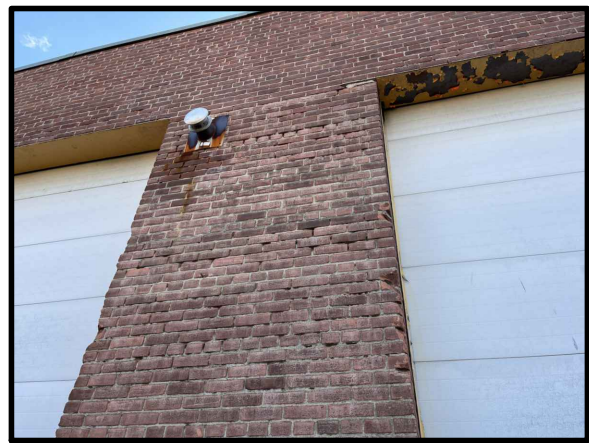
2 MASONRY REPAIRS  
A-300 N.T.S.



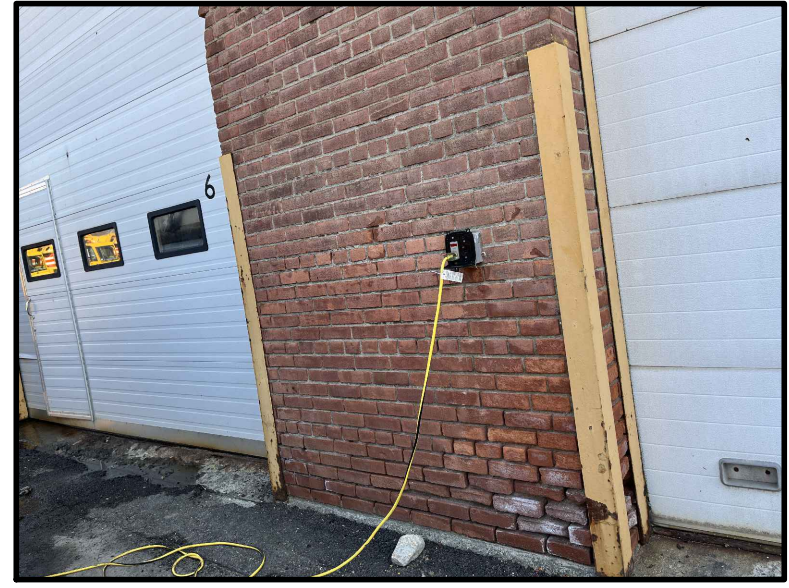
3 MASONRY REPAIRS  
A-300 N.T.S.



4 MASONRY REPAIRS  
A-300 N.T.S.



5 MASONRY REPAIRS  
A-300 N.T.S.



6 MASONRY REPAIRS  
A-300 N.T.S.



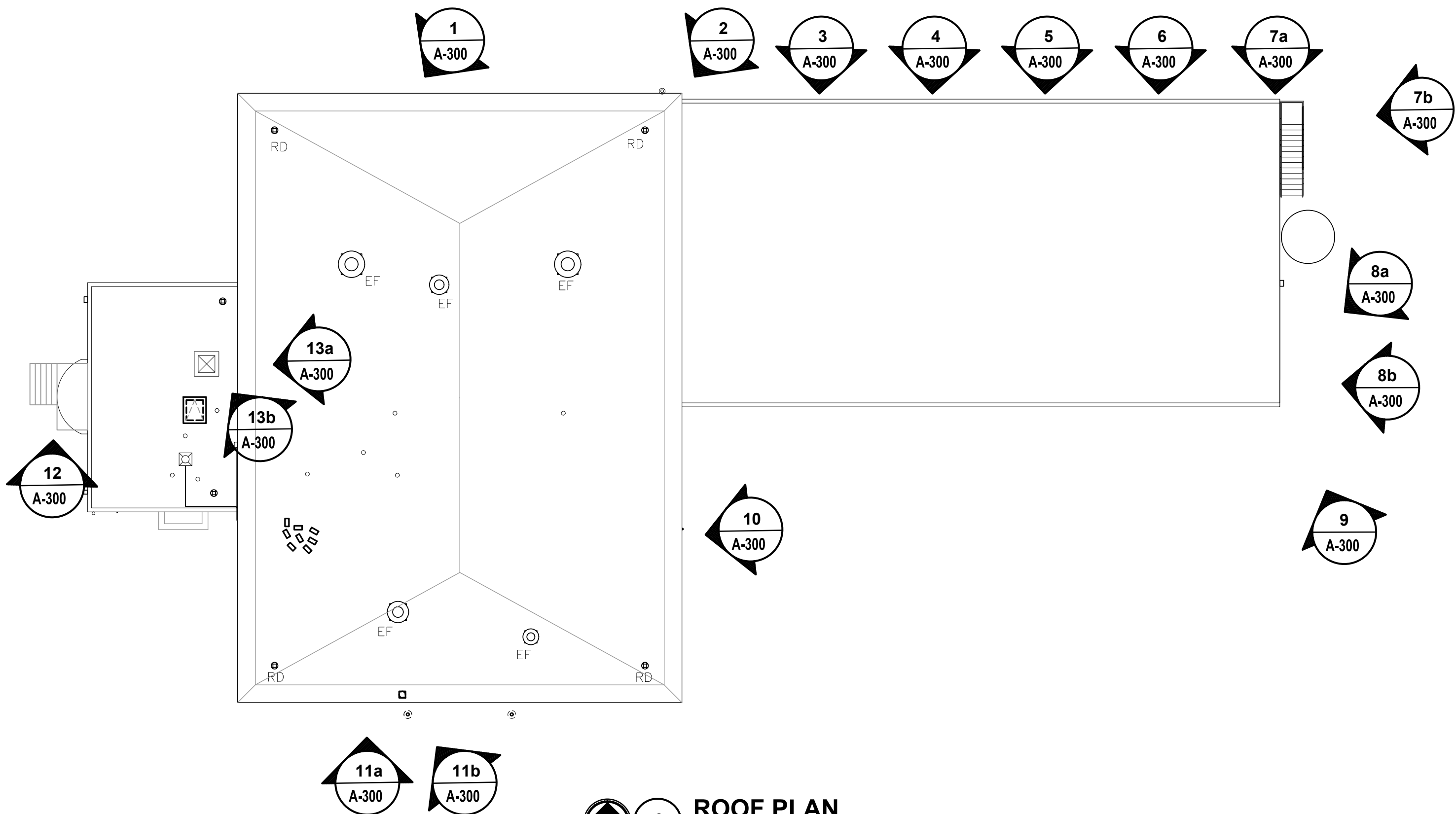
13a MASONRY REPAIRS  
A-300 N.T.S.



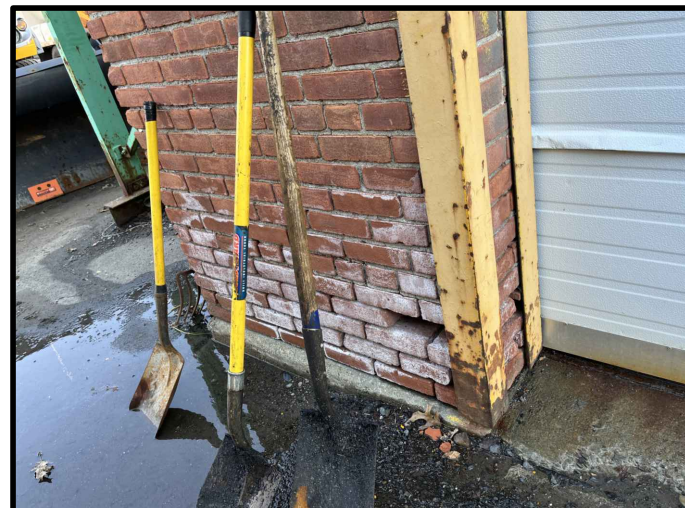
13b



12 MASONRY REPAIRS  
A-300 N.T.S.



1 ROOF PLAN  
SCALE: 1/4" = 1'-0"



7a MASONRY REPAIRS  
A-300 N.T.S.



7b



8a MASONRY REPAIRS  
A-300 N.T.S.



8b



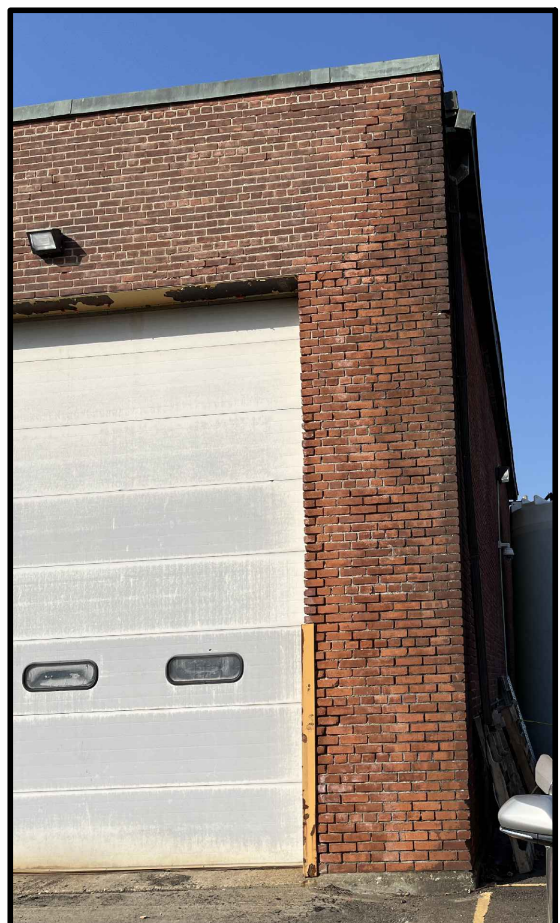
11a MASONRY REPAIRS  
A-300 N.T.S.



11b



10 MASONRY REPAIRS  
A-300 N.T.S.



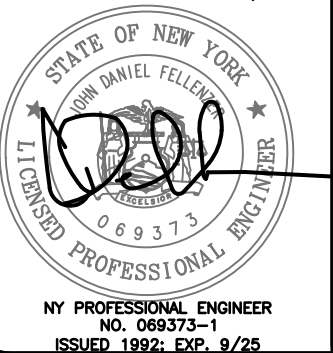
9 MASONRY REPAIRS  
A-300 N.T.S.

CONSULTANT

FELLENZER  
FE #: 23-377 ENGINEERING LLP

**WARNING:**  
THE ALTERATION OF THIS MATERIAL IN ANY WAY,  
UNLESS DONE UNDER THE DIRECTION OF A COMPARABLE  
PROFESSIONAL, I.E. ARCHITECT FOR AN ARCHITECT,  
ENGINEER FOR AN ENGINEER, OR LANDSCAPE ARCHITECT  
FOR A LANDSCAPE ARCHITECT, IS A VIOLATION OF THE  
NEW YORK STATE EDUCATION LAW AND/OR REGULATIONS  
AND IS A CLASS "A" MISDEMEANOR.

JOHN D. FELLENZER, P.E.



CONTRACT: CONSTRUCTION

TITLE: REPLACE ROOF  
DOT REGION 8, ORANGE COUNTY

LOCATION: NYS NEWBURGH DOT FACILITY  
112 DICKSON STREET  
NEWBURGH, NY 12550

CLIENT: NEW YORK STATE  
DEPARTMENT OF TRANSPORTATION


	10/3/2024	BID DOCUMENTS
MARK	DATE	DESCRIPTION
PROJECT NUMBER:	Q1858-C	
DESIGNED BY:	SBL	
DRAWN BY:	SL	
FIELD CHECK:	SRB	
APPROVED:	JDF	
SHEET TITLE:		

MASONRY REPAIRS

DRAWING NUMBER:

A-300