

9 8 7 6 5 4 3 2 1

I

H

G

F

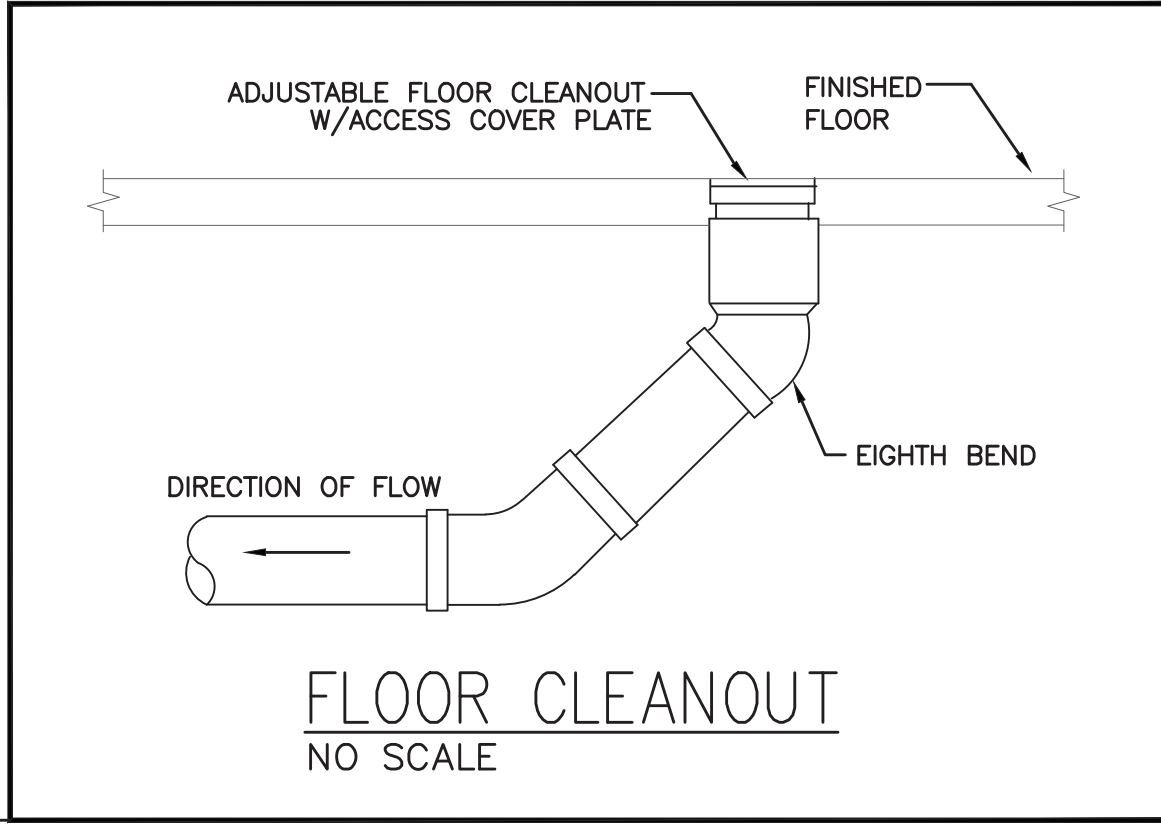
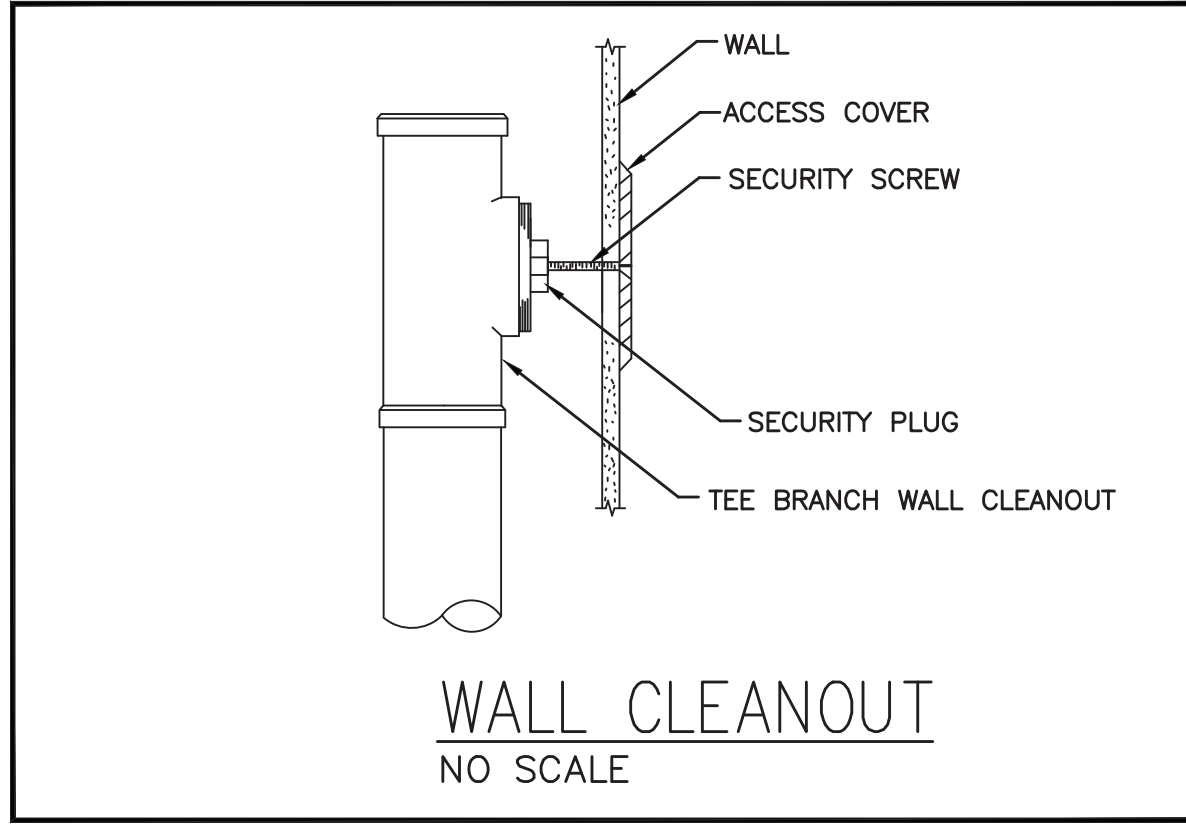
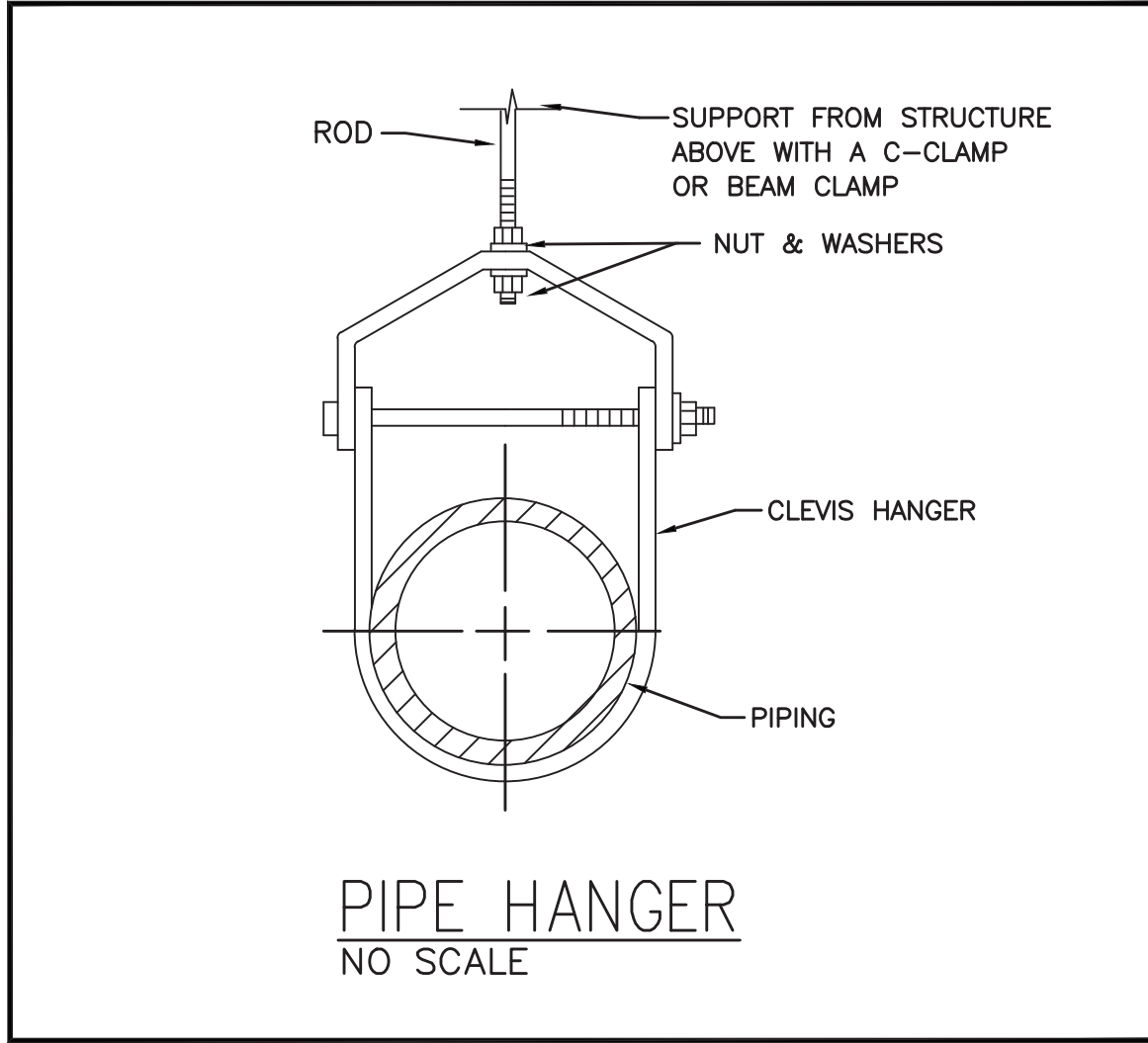
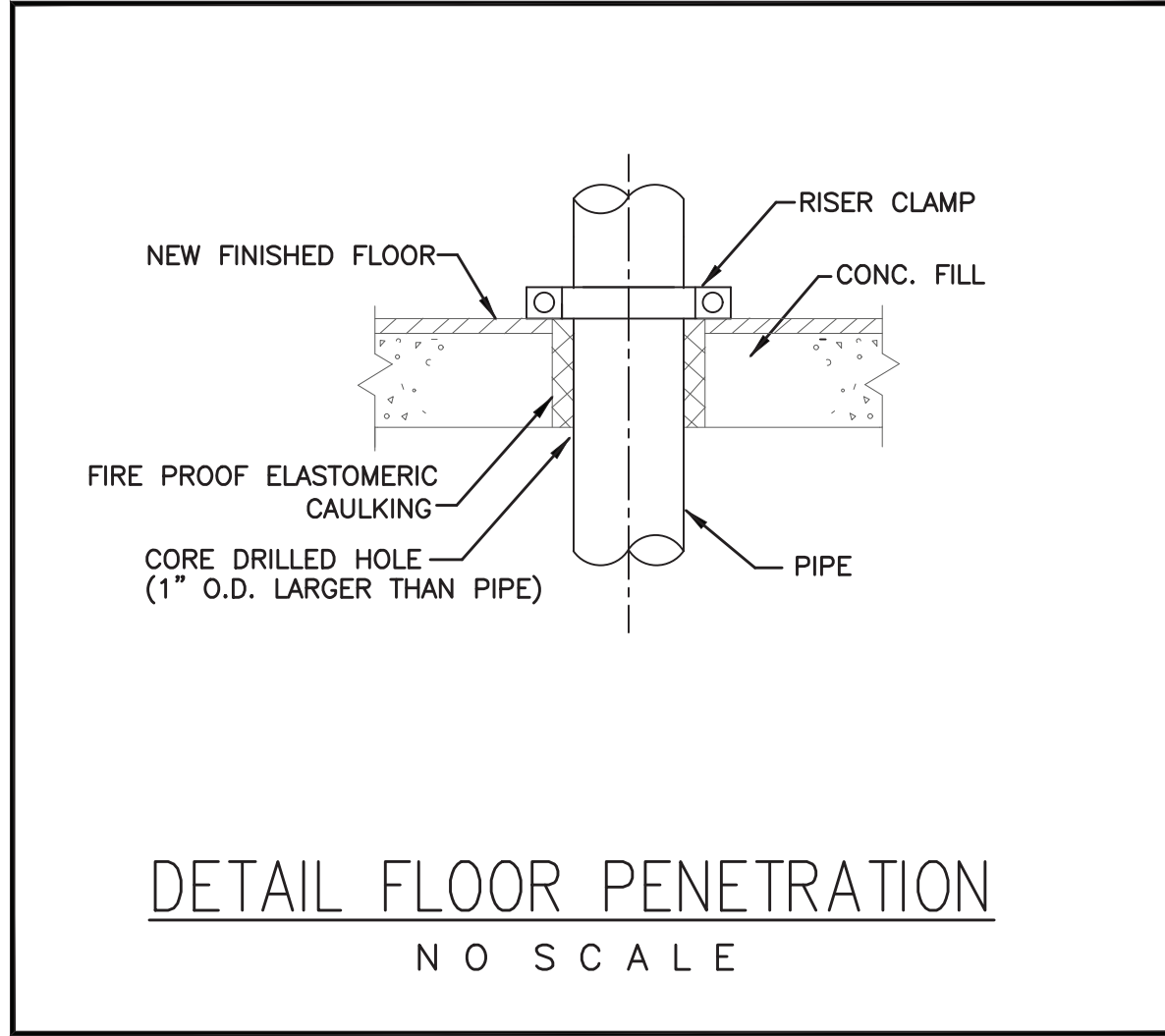
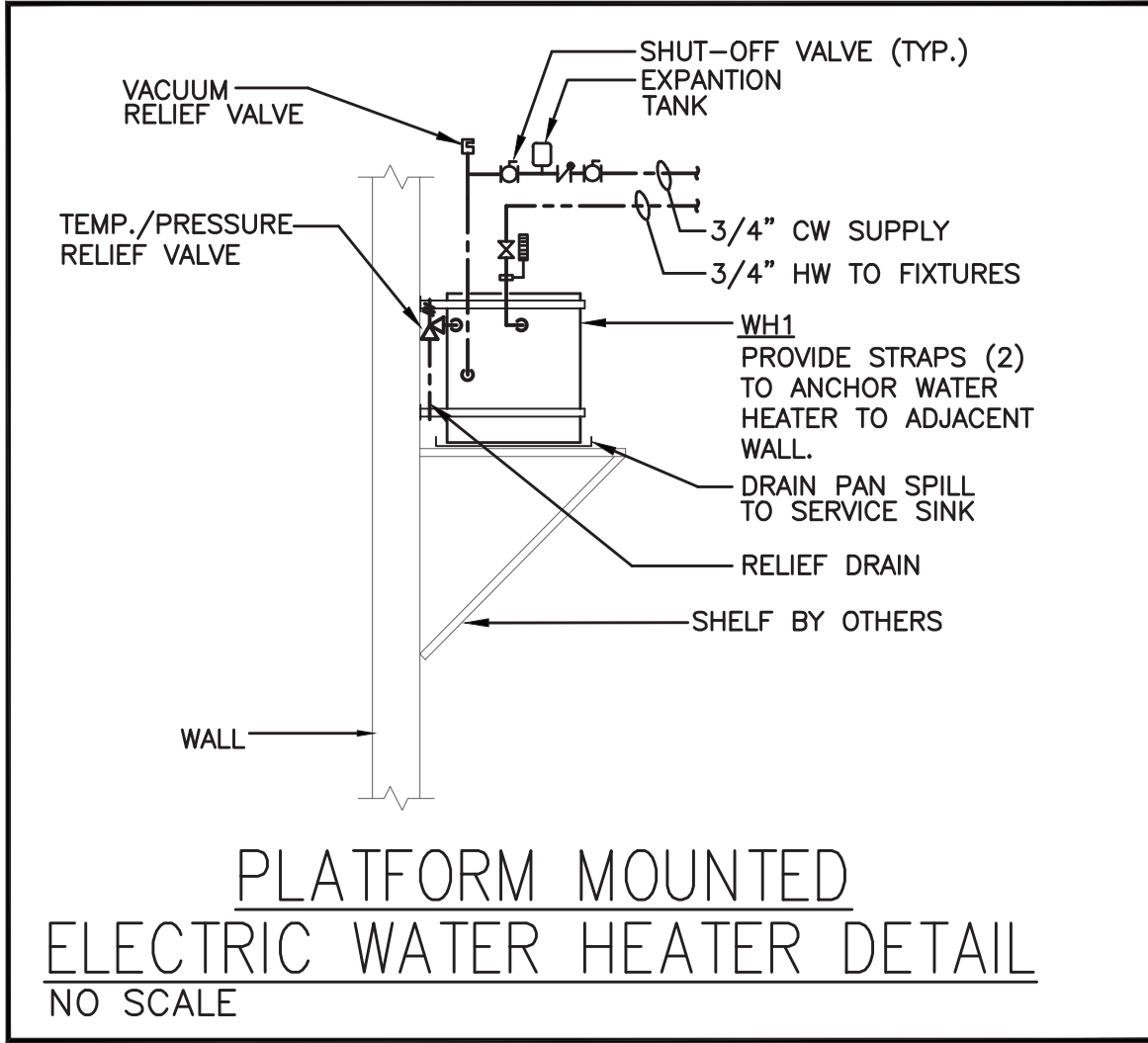
E

D

C

B

A



PLUMBING SYMBOL LIST	
NOTE: NOT ALL SYMBOLS ARE USED	
SYMBOL	DESCRIPTION
---	EXISTING PIPING TO REMAIN
-X-X-X-X-	EXISTING PIPING TO BE REMOVED
---	WASTE PIPE ABOVE FLOOR/SLAB (W)
---	WASTE PIPE BELOW FLOOR/SLAB (W)
---	SANITARY PIPE ABOVE FLOOR/SLAB (S)
---	SANITARY PIPE BELOW FLOOR/SLAB (S)
---	VENT PIPE (V)
---	EXISTING COLD WATER PIPING
---	EXISTING HOT WATER PIPING
---	EXISTING HOT WATER RETURN PIPING
---	COLD WATER PIPING (CW)
---	HOT WATER PIPING (HW)
---	HOT WATER RETURN PIPING (HWR)
---	COLD WATER PIPING UNDER GROUND(CW)
---	TRAP PRIMER PIPING
---	DIRECTION OF FLOW
---	PIPE RISE OR UP THRU SLAB
---	PIPE DROP OR DOWN THRU SLAB
---	BOTTOM OF PIPE TAKE-OFF CONNECTION
---	TOP OF PIPE TAKE-OFF CONNECTION
---	P-TRAP
---	CAP PIPE OUTLET
---	CLEANOUT (CO)
---	UNION
---	VALVE IN RISE / VERTICAL
---	POINT OF NEW CONNECTION
---	FLOOR DRAIN
---	BALL VALVE
---	COLD WATER SUPPLY SHUT OFF VALVE
---	GAS SHUT OFF VALVE

PLUMBING ABBREVIATION LIST	
SYMBOL	DESCRIPTION
AFF	ABOVE FINISHED FLOOR
ADA	HANDICAPPED ACCESSIBLE
CO	CLEANOUT
CV	CHECK VALVE
CW	COLD WATER
CLG	CEILING
CONN	CONNECT
CONT	CONTINUATION
DN	DOWN (PENETRATES FLOOR SLAB)
DR	DRAIN
DPCO	DECK PLATE CLEANOUT
DWG	DRAWING
EX	EXISTING
EL	ELEVATION
EW2	ELECTRIC WATER COOLER -- HANDICAPPED ACCESSIBLE
F1 or F2	FLOOR DRAIN
FL	FLOOR
HWR	HOT WATER RECIRCULATION
IW	INDIRECT WASTE
L1 or L2	LAVATORY
LV	LAVATORIES
MIN	MINIMUM
MTD	MOUNTED
NTS	NOT TO SCALE
S	SANITARY
SH2	SHOWER
K2	SINK
TYP	TYPICAL
UP	UP (PENETRATES FLOOR SLAB)
U1 or U2	URINAL
V or VNT	VENT
VF	VERIFY IN FIELD
W	WASTE
W1, W2, or W3	WATER CLOSET
WCO	WALL CLEANOUT
WH	WATER HEATER

PLUMBING FIXTURE SCHEDULE

NOTE:
REFER TO ARCHITECTURAL DRAWINGS FOR PLUMBING
FIXTURE SCHEDULE.

PLUMBING EQUIPMENT SCHEDULE

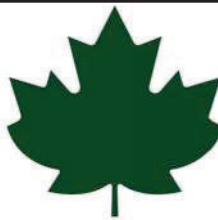
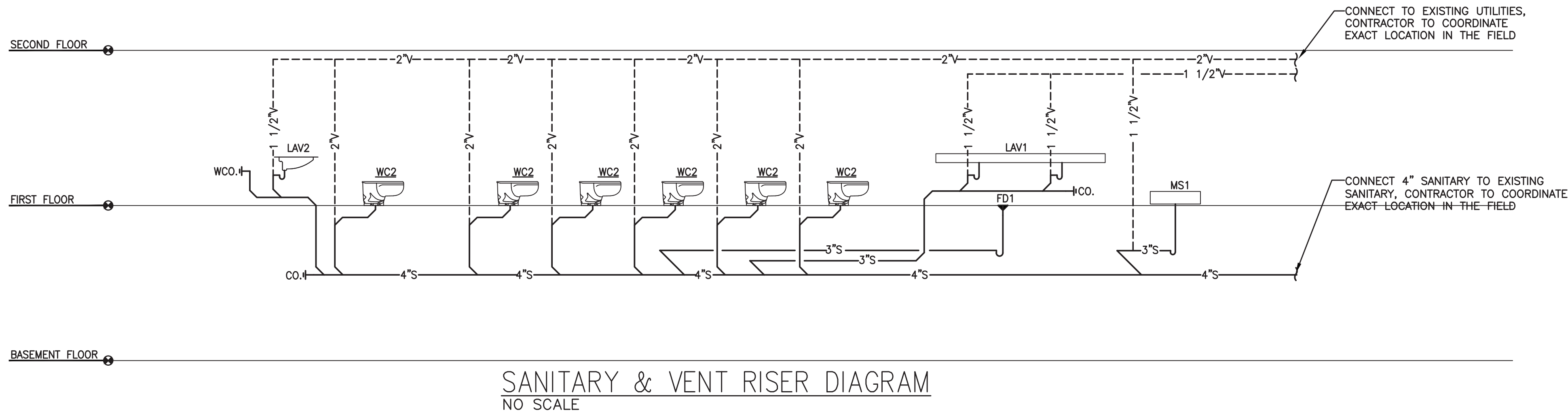
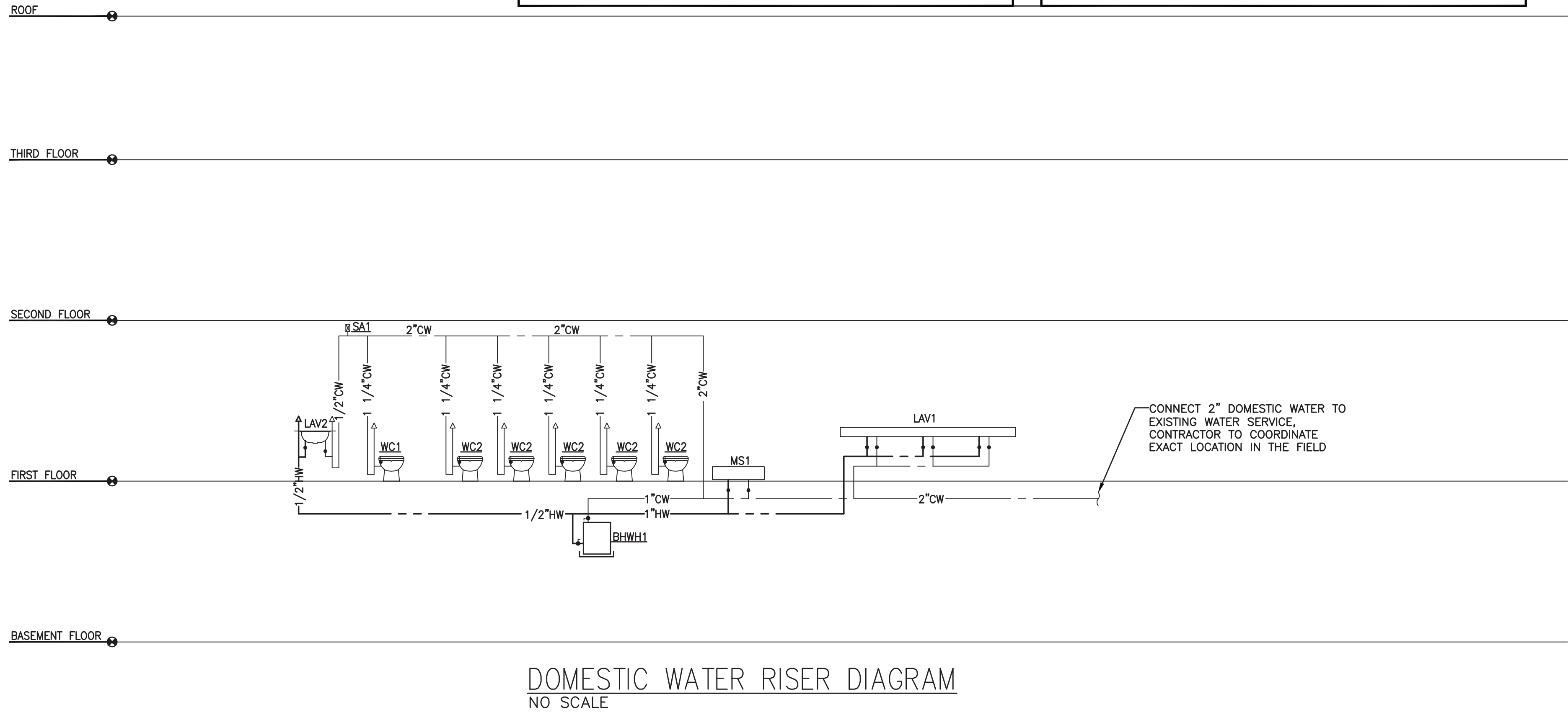
FCQ	FLOOR CLEANOUT: ZURN MODEL #Z-1400-ZN-T, CAST IRON W/POLISHED BRONZE TOP ACCESS COVER. SIZE AS INDICATED ON DRAWINGS. INSTALL PER MANUFACTURERS RECOMMENDATIONS.
WCO	WALL CLEANOUT: ZURN MODEL #Z-1446-VP, CAST IRON W/POLISHED BRONZE TOP VANDAL PROOF ACCESS COVER. SIZE AS INDICATED ON DRAWINGS. INSTALL PER MANUFACTURERS RECOMMENDATIONS.
FD1	FLOOR DRAIN JAY B. SMITH MODEL #2005A, W/TYPE 'A' ROUND STRAINER, 3" OUTLET, CAST IRON BODY, W/FLASHING COLLAR, WITH PROSET TRAP GUARD MODEL #TG3H
SA1	SHOCK ABSORBER: SMITH "HYDROTROL" 5020, 1" NPT, ALL STAINLESS STEEL, INSTALL PER MANUFACTURERS RECOMMENDATIONS. INSTALL WITH GATE VALVE SHUT OFF AND ACCESS DOOR.
SP1	SUMP PUMP: (24"x24"D SUMP PIT) STANCOB MODEL: SE50 SIMPLEX OIL-MINDER SYSTEM SUBMERSIBLE PUMP, NEMA 4x OIL MINDER CONTROL PANEL, OIL PROBE, FLOAT SWITCHES, INDICATOR LIGHTS, WATER ALARMS, 6' CORD, SCREENED INLET, 75 GPM, 2" DISCHARGE, 115V, 5 AMPS, 1/2 HP, 5' HEAD @ 4500 GPH, W/25' PWR. CORD

WATER HEATER SCHEDULE

DESIGNATION	NO. REQUIRED	MANUFACTURER AND MODEL NUMBER		STORAGE WATER TEMPERATURE (DEG.F)	VOLUME/HEATER (GALS.)	RECOVERY/HEATER (GPH)	TEMPERATURE RISE (DEG.F)	MAXIMUM WATER FLOW (G.P.M.)	W.W.P. (PSIG.)	TEST PRESSURE (PSIG.)	DIAMETER (INCHES)	ELECTRIC			REMARKS	
												ELECTRIC LOAD (K.W.)	PHASE	VOLTAGE		
BHWH1	1	A.O. SMITH	DEL-50	125°	30	10	80	-	150	160	26	36	6.0	1	208	PLATFORM MOUNTED
BHWH2	1	CHRONOMITE	M-20L	00	00	00	125°	00	150	170	9.5	6.5	4160	1	208	- - -
CBWH2	1	A.O. SMITH	DEL-6	125°	6	8	80	-	150	160	14	15.5	1.5	1	120	PLATFORM MOUNTED

NOTES:

1. REFER TO DRAWINGS, DETAILS, RISERS AND SPECIFICATIONS FOR MORE INFORMATION.



New York State
Parks, Recreation and
Historic Preservation

Governor Kathy Hochul

Commissioner Pro Tempore Randy Simons

IT IS A VIOLATION OF STATE EDUCATION LAW FOR ANY PERSON, UNLESS UNDER THE DIRECTION OF A LICENSED ARCHITECT/ENGINEER TO ALTER THIS DOCUMENT IN ANYWAY. ALTERATIONS MUST HAVE THE SEAL AFFIXED ALONG WITH A DESCRIPTION OF THE ALTERATIONS, DATE AND ARCHITECT/ENGINEER'S

Architectural Consultant
BEYER BLINDER BELLE ARCHITECTS & PLANNERS
100 BROADWAY, 20TH FLOOR, NEW YORK, NY 10071

BEYER
BLINDER
BELLE

Structural Consultant
THORNTON TOMASETTI
100 BROADWAY, 15TH FLOOR, NEW YORK, NY 10071

Thornton
Tomasetti

MEP / FP / IT Consultant
LANDMARKS FACILITIES GROUP
202 EAST AVENUE, NORWALK, CT 06855

LANDMARKS
FACILITIES
GROUP, INC.

Civil Consultant
CMA CONSULTING, INC.
3 WINDING CIRCLE, PO BOX 5008, ALBANY, NY 12205

CMA

Landscape Consultant
RHODESIDE HANWELL LANDSCAPE ARCHITECTURE
341 WEST 36TH STREET, SUITE 1201, NEW YORK, NY 10018

RHI

Lighting Consultant
HLB LIGHTING
36 EAST 32ND STREET, 11TH FLOOR, NEW YORK, NY 10018

HLB

Signage Consultant
LVCK - A BEYER BLINDER BELLE STUDIO
100 BROADWAY, 20TH FLOOR, NEW YORK, NY 10071

LVCK | A Beyer Blinder Belle Studio

NYS OPRHP Taconic Region

9 Old Post Rd, PO Box 308
Staatsburg, NY 12580
(845) 889 - 4100

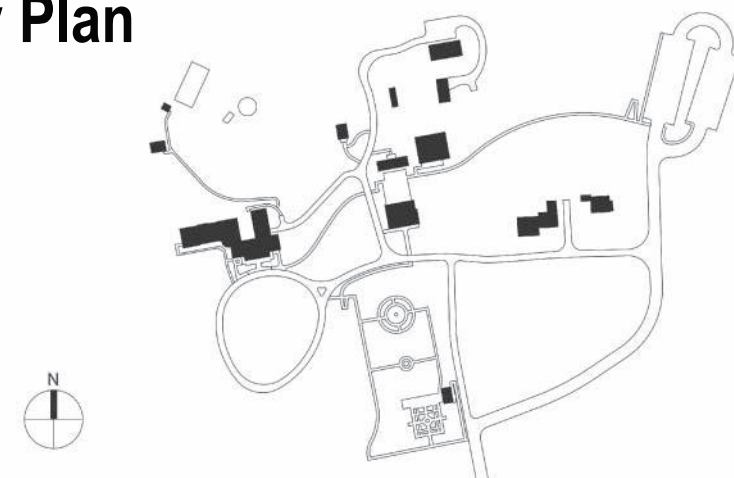
Regional Director: Linda Cooper
Capital District Manager: Garrett Jobson

Project Title:
John Jay Homestead Site And Building
Enhancements

Project Location:

400 Jay Street
Katonah NY 10536

Key Plan



REVISIONS

Rev No	Description	Date

Drawn By:

LFG

Design By:

LFG

Checked By:

LFG

Approved By:

LFG

DATE

07/10/24

Sheet Title

PLUMBING SYMBOLS,
SCHEDULES, RISERS
& DETAILS

Seal and Signature

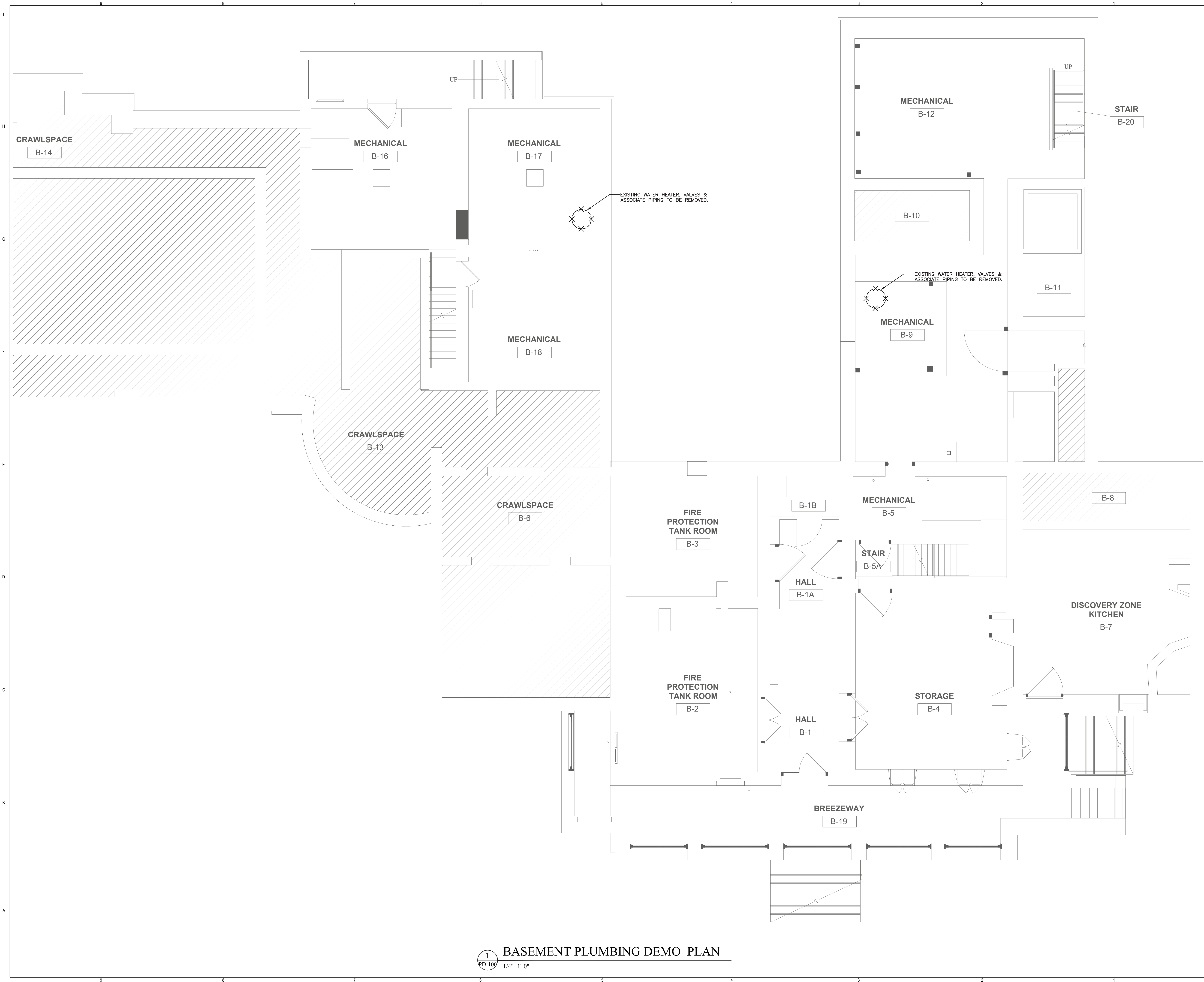



Drawing Number

P-001

Project Number:
TA-JJ-2023-001

Sheet:
306 of 327





Governor Kathy HochulCommissioner Pro Tempore Randy Simons

IT IS A VIOLATION OF STATE EDUCATION LAW FOR ANY PERSON, UNLESS UNDER THE DIRECTION OF A LICENSED ARCHITECT/ENGINEER TO ALTER THIS DOCUMENT IN ANYWAY. ALTERATIONS MUST HAVE THE SEAL AFFIXED ALONG WITH A DESCRIPTION OF THE ALTERATIONS, DATE AND ARCHITECT/ENGINEER'S SIGNATURE.

Architectural Consultant
BEYER BLINDER BELLE ARCHITECTS & PLANNERS
100 BROADWAY, 20TH FLOOR, NEW YORK, NY 10071

BEYER
BLINDER
BELLE

Structural Consultant
THORNTON TOMASETTI
100 BROADWAY, 15TH FLOOR, NEW YORK, NY 10071

Thornton
Tomasetti

MEP / FP / IT Consultant
LANDMARKS FACILITIES GROUP
202 EAST AVENUE, NORWALK, CT 06855

LFG
LANDMARKS
FACILITIES
GROUP, INC.

Civil Consultant
CMA CONSULTING, INC.
3 WINNERS CIRCLE, PO BOX 8088, ALBANY, NY 12205

CMA

Landscape Consultant
RHODESIDE HAWELL LANDSCAPE ARCHITECTURE
347 WEST 36TH STREET, SUITE 1201, NEW YORK, NY 10018

RHI

Lighting Consultant
HLB LIGHTING
38 EAST 32ND STREET, 11TH FLOOR, NEW YORK, NY 10018

HLB

Signage Consultant
LVCK - A BEYER BLINDER BELLE STUDIO
100 BROADWAY, 20TH FLOOR, NEW YORK, NY 10071

LVCK

A Beyer Blinder Belle
Studio

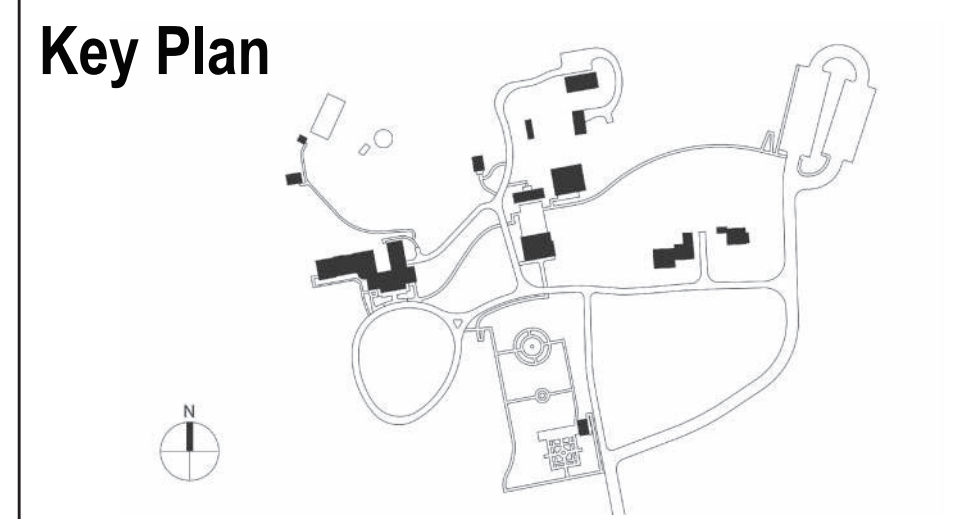
NYS OPRHP Taconic Region
9 Old Post Rd, PO Box 308
Staatsburg, NY 12580
(845) 889 - 4100

Regional Director: Linda Cooper
Capital District Manager: Garrett Jobson

Project Title:
John Jay Homestead Site And Building
Enhancements

Project Location:
400 Jay Street
Katonah NY 10536

Key Plan



REVISIONS

Rev No	Description	Date

Drawn By:
LFG


Design By:
LFG

Checked By:
LFG

Approved By:
LFG

DATE
07/10/24

Seal and Signature



Sheet Title

BEDFORD HOUSE-
PLUMBING DEMO
BASEMENT PLAN

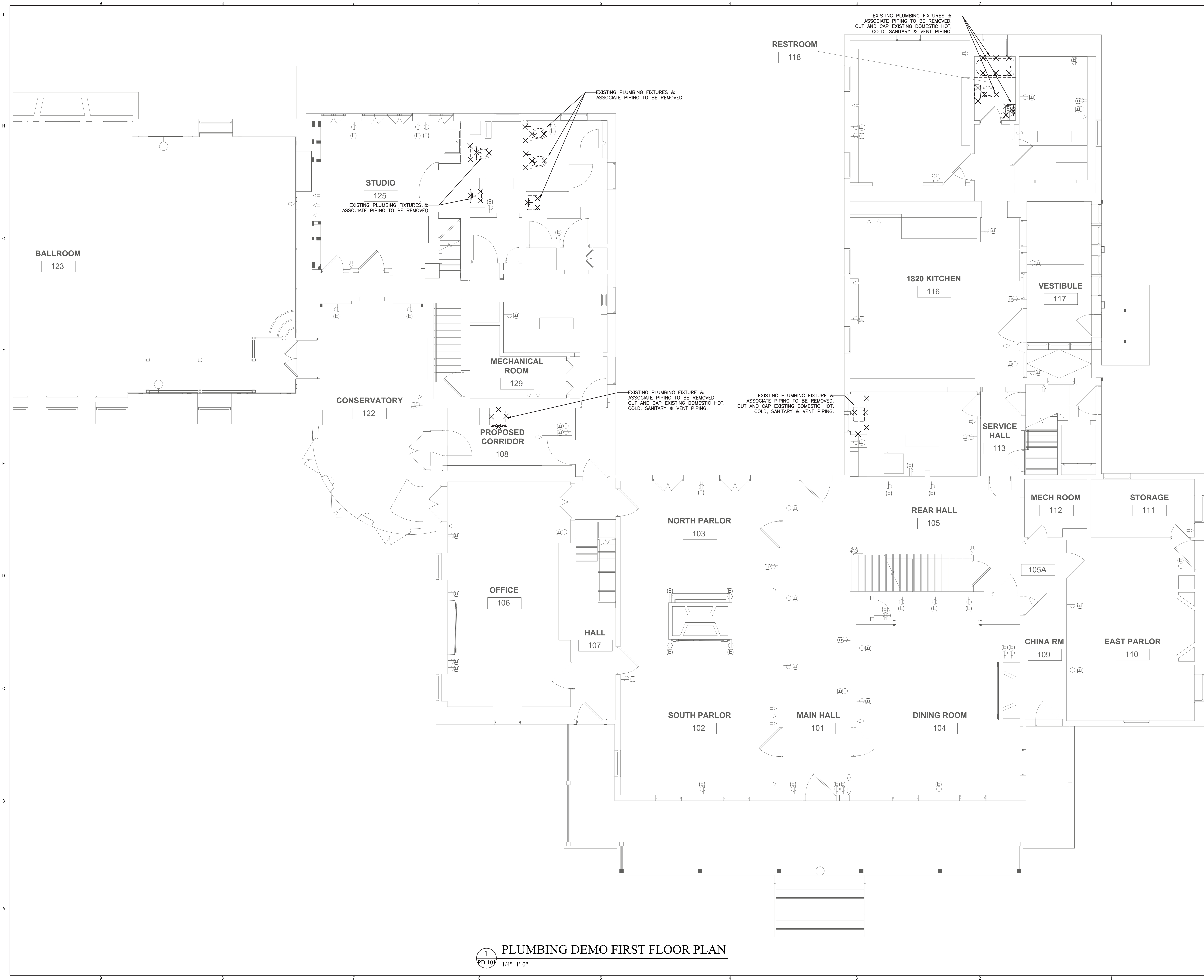
Drawing Number


PD-100

Project Number:
TA-JJ-2023-001

Sheet:
307 of 327

BASEMENT PLUMBING DEMO PLAN
1/4"=1'-0"





Governor Kathy Hochul Commissioner Pro Tempore Randy Simons

IT IS A VIOLATION OF STATE EDUCATION LAW FOR ANY PERSON, UNLESS UNDER THE DIRECTION OF A LICENSED ARCHITECT/ENGINEER TO ALTER THIS DOCUMENT IN ANYWAY. ALTERATIONS MUST HAVE THE SEAL AFFIXED ALONG WITH A DESCRIPTION OF THE ALTERATIONS, DATE AND ARCHITECT/ENGINEER'S SIGNATURE.

Architectural Consultant
BEYER BLINDER BELLE ARCHITECTS & PLANNERS
100 BROADWAY, 20TH FLOOR, NEW YORK, NY 10021

Structural Consultant
THORNTON TOMASETTI
100 BROADWAY, 15TH FLOOR, NEW YORK, NY 10021

MEP / FP / IT Consultant
LANDMARKS FACILITIES GROUP
202 EAST AVENUE, NORWALK, CT 06855

Civil Consultant
CMA CONSULTING, INC.
3 WINNERS CIRCLE, PO BOX 808, ALBANY, NY 12205

Landscape Consultant
RHODESIDE HAWWELL LANDSCAPE ARCHITECTURE
347 WEST 36TH STREET, SUITE 1201, NEW YORK, NY 10018

Lighting Consultant
HLB LIGHTING
38 EAST 32ND STREET, 11TH FLOOR, NEW YORK, NY 10016

Signage Consultant
LVCK - A BEYER BLINDER BELLE STUDIO
100 BROADWAY, 20TH FLOOR, NEW YORK, NY 10021

BEYER BLINDER BELLE

Thornton Tomasetti

LFG

CMA

RHI

HLB

LVCK | A Beyer Blinder Belle Studio

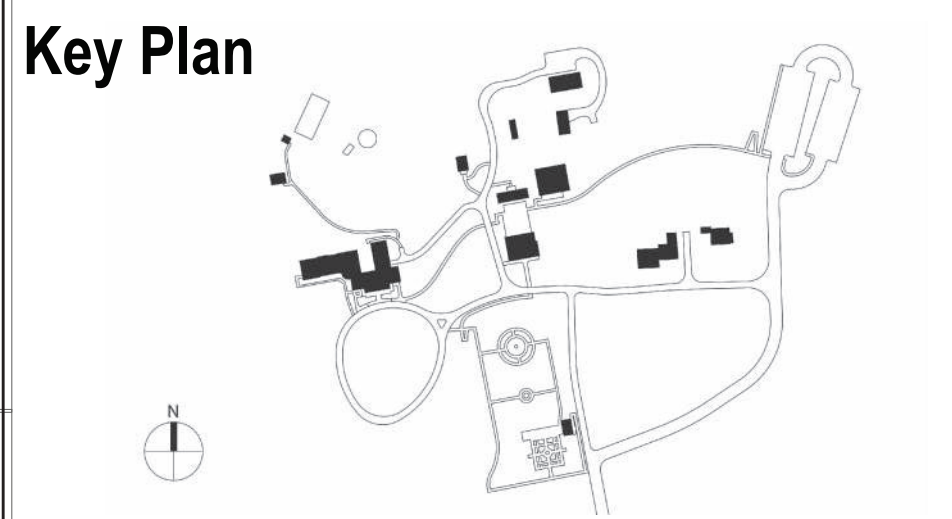
NYS OPRHP Taconic Region
9 Old Post Rd, PO Box 308
Staatsburg, NY 12580
(845) 889 - 4100

Regional Director: Linda Cooper
Capital District Manager: Garrett Jobson

Project Title:
John Jay Homestead Site And Building Enhancements

Project Location:
400 Jay Street
Katonah NY 10536

Key Plan



REVISIONS		
Rev No	Description	Date

Drawn By:
LFG

Design By:
LFG


Checked By:
LFG

Approved By:
LFG

DATE
07/10/24

Sheet Title

Seal and Signature



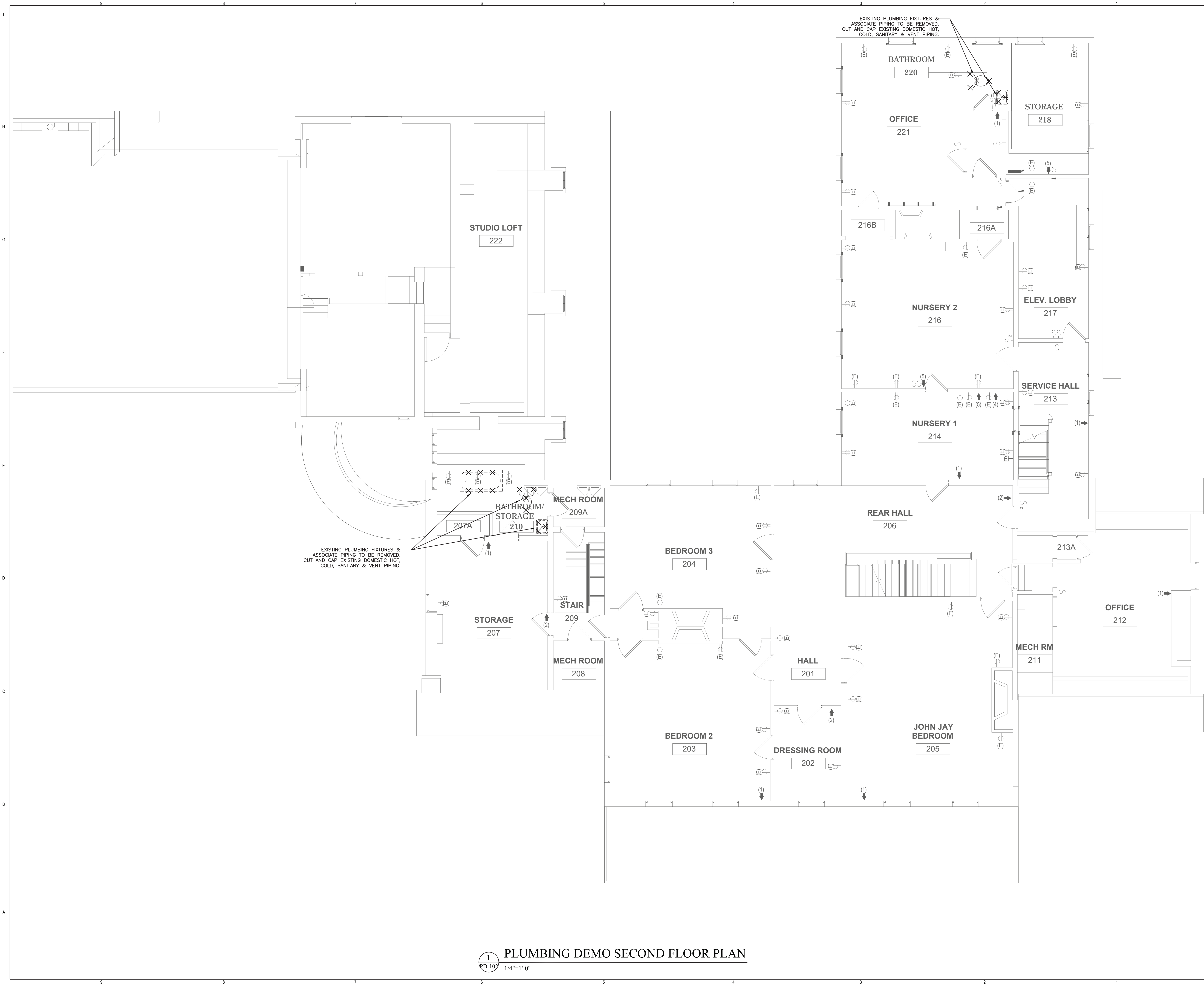
BEDFORD HOUSE-
PLUMBING DEMO
1ST FLOOR PLAN


PD-101

Project Number:
TA-JJ-2023-001

Sheet:
308 of 327

PLUMBING DEMO FIRST FLOOR PLAN
1/4"=1'-0"





**New York State
Parks, Recreation and
Historic Preservation**

Governor Kathy Hochul

Commissioner Pro Tempore Randy Simons

IT IS A VIOLATION OF STATE EDUCATION LAW FOR ANY PERSON, UNLESS UNDER THE DIRECTION OF A LICENSED ARCHITECT/ENGINEER TO ALTER THIS DOCUMENT IN ANYWAY. ALTERATIONS MUST HAVE THE SEAL AFFIXED ALONG WITH A DESCRIPTION OF THE ALTERATIONS, DATE AND ARCHITECT/ENGINEER'S SIGNATURE.

Architectural Consultant
BEYER BLINDER BELLE ARCHITECTS & PLANNERS
100 BROADWAY, 20TH FLOOR, NEW YORK, NY 10021

**BEYER
BLINDER
BELLE**

Structural Consultant
THORNTON TOMASETTI
100 BROADWAY, 15TH FLOOR, NEW YORK, NY 10021

**Thornton
Tomasetti**

MEP / FP / IT Consultant
LANDMARKS FACILITIES GROUP
202 EAST AVENUE, NORWALK, CT 06855

LFG
LANDMARKS
FACILITIES
GROUP, INC.

Civil Consultant
CMA CONSULTING, INC.
3 WINNING CIRCLE, PO BOX 808, ALBANY, NY 12205

CMA

Landscape Consultant
RHODESIDE HAWWELL LANDSCAPE ARCHITECTURE
341 WEST 36TH STREET, SUITE 1201, NEW YORK, NY 10018

RHL

Lighting Consultant
HLB LIGHTING
38 EAST 32ND STREET, 11TH FLOOR, NEW YORK, NY 10016

HLB

Signage Consultant
LVCK - A BEYER BLINDER BELLE STUDIO
100 BROADWAY, 20TH FLOOR, NEW YORK, NY 10021

LVCK | A Beyer Blinder Belle Studio

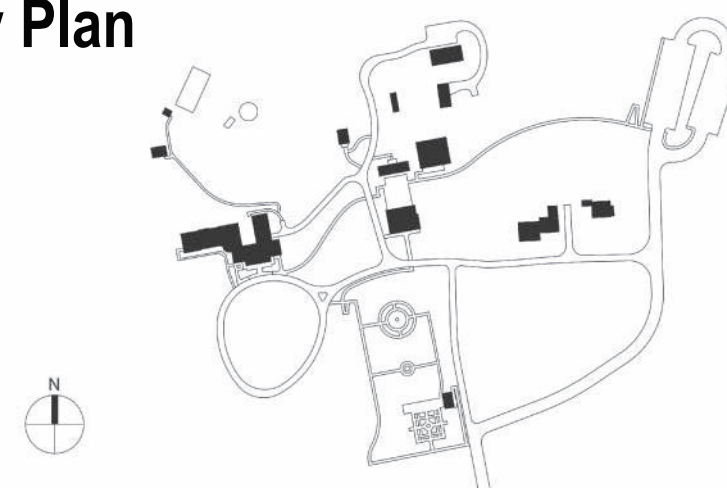
NYS OPRHP Taconic Region
9 Old Post Rd, PO Box 308
Staatsburg, NY 12580
(845) 889 - 4100

Regional Director: Linda Cooper
Capital District Manager: Garrett Jobson

Project Title:
John Jay Homestead Site And Building
Enhancements

Project Location:
400 Jay Street
Katonah NY 10536

Key Plan



REVISIONS

Rev No	Description	Date

Drawn By:
LFG


Design By:
LFG

Checked By:
LFG

Approved By:
LFG

DATE
07/10/24

Seal and Signature



Sheet Title

BEDFORD HOUSE-
PLUMBING DEMO
2ND FLOOR PLAN

Drawing Number

PD-102

Project Number:
TA-JJ-2023-001

Sheet:
309 of 327



Commissioner Pro Tempore Randy Simons

IT IS A VIOLATION OF STATE EDUCATION LAW FOR ANY PERSON, UNLESS UNDER THE DIRECTION OF A LICENSED ARCHITECT/ENGINEER TO ALTER THIS DOCUMENT IN ANYWAY. ALTERATIONS MUST HAVE THE SEAL AFFIXED ALONG WITH A DESCRIPTION OF THE ALTERATIONS, DATE AND ARCHITECT'S/ENGINEER'S

**BEYER
BLINDER
BELLE**

**Thornton
Tomasetti****RHI**

LVCK | A Beyer Blinder Belle Studio

9 Old Post Rd, PO Box 308
Stoughton, MA 01562

Capital District Manager: Garrett Jobson

Project Title:
John Jay Homestead Site And Building
Enhancements

400 Jay Street
Katonah NY 10536

[illegible]

Real and Signature

OF NEW

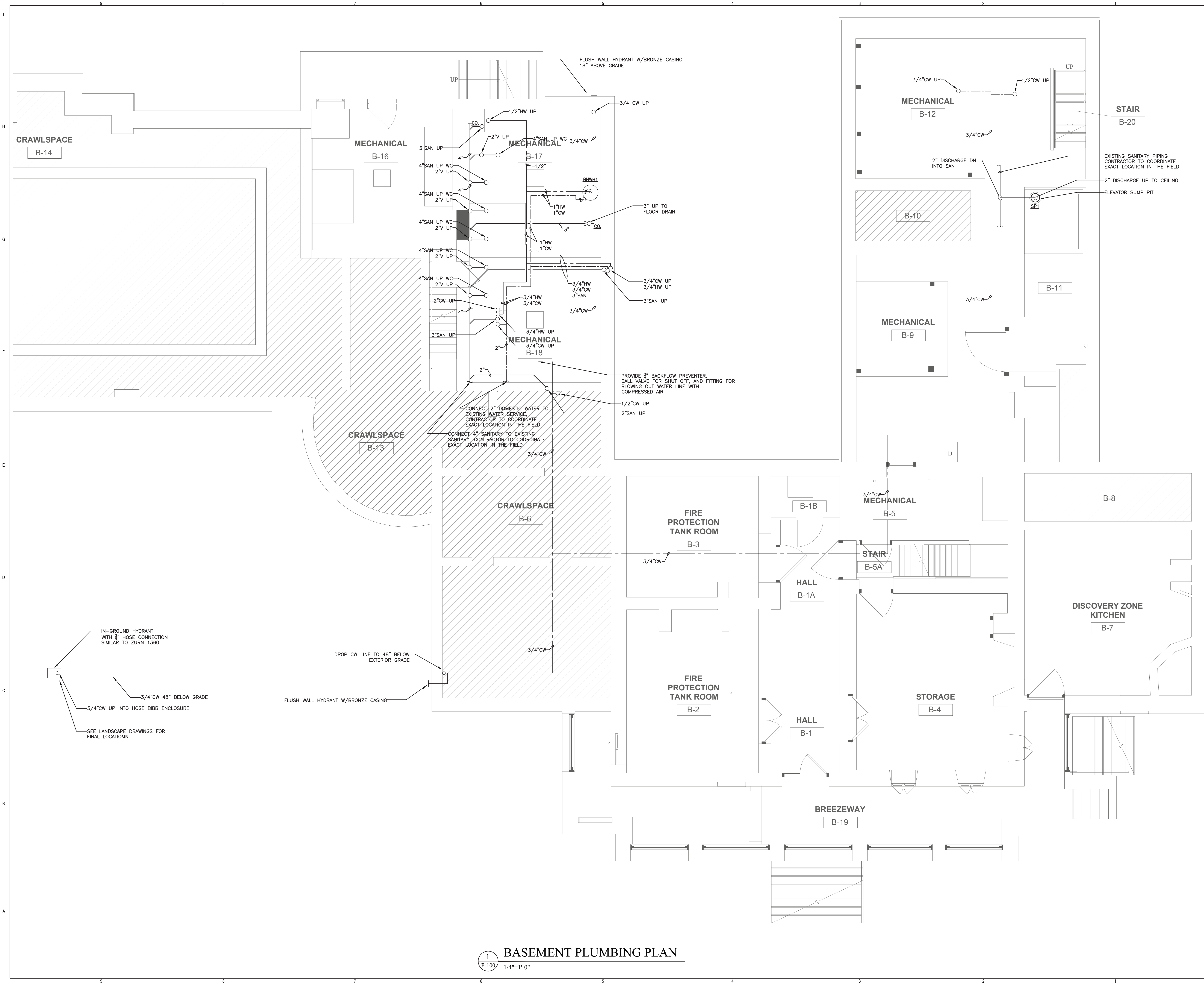



089878-1



Drawing Number

10 of 32





Governor Kathy Hochul Commissioner Pro Tempore Randy Simons

IT IS A VIOLATION OF STATE EDUCATION LAW FOR ANY PERSON, UNLESS UNDER THE DIRECTION OF A LICENSED ARCHITECT/ENGINEER TO ALTER THIS DOCUMENT IN ANYWAY. ALTERATIONS MUST HAVE THE SEAL AFFIXED ALONG WITH A DESCRIPTION OF THE ALTERATIONS, DATE AND ARCHITECT/ENGINEER'S SIGNATURE.

Architectural Consultant
BEYER BLINDER BELLE ARCHITECTS & PLANNERS
100 BROADWAY, 20TH FLOOR, NEW YORK, NY 10071

Structural Consultant
THORNTON TOMASETTI
100 BROADWAY, 15TH FLOOR, NEW YORK, NY 10071

MEP / FP / IT Consultant
LANDMARKS FACILITIES GROUP
202 EAST AVENUE, NORWALK, CT 06850

Civil Consultant
CMA CONSULTING, INC.
3 WINNERS CIRCLE, PO BOX 808, ALBANY, NY 12205

Landscape Consultant
RHODESIDE HAWELL LANDSCAPE ARCHITECTURE
347 WEST 36TH STREET, SUITE 1201, NEW YORK, NY 10018

Lighting Consultant
HLB LIGHTING
36 EAST 32ND STREET, 11TH FLOOR, NEW YORK, NY 10018

Signage Consultant
LVCK - A BEYER BLINDER BELLE STUDIO
100 BROADWAY, 20TH FLOOR, NEW YORK, NY 10071

BEYER BLINDER BELLE

Thornton Tomasetti

LFG

CMA

RHL

HLB

LVCK | A Beyer Blinder Belle Studio

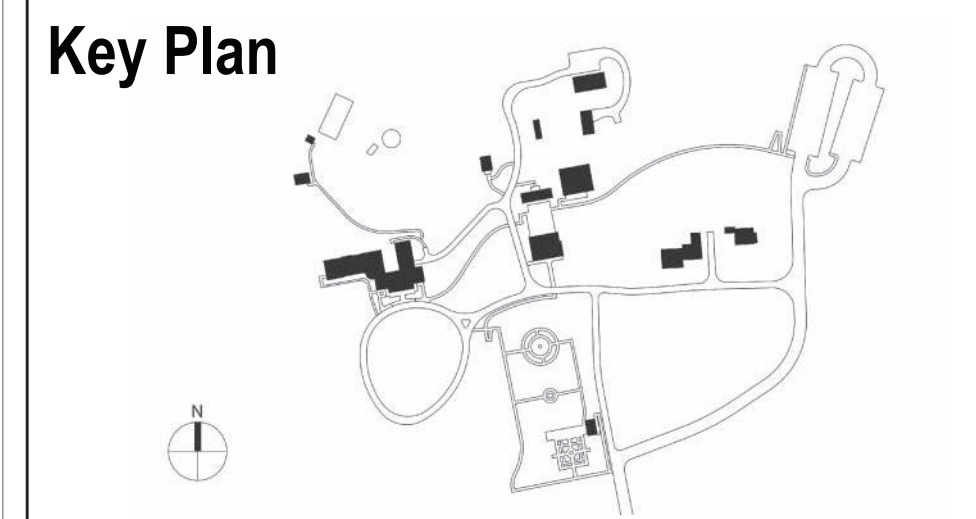
NYS OPRHP Taconic Region
9 Old Post Rd, PO Box 308
Staatsburg, NY 12580
(845) 889 - 4100

Regional Director: Linda Cooper
Capital District Manager: Garrett Jobson

Project Title:
John Jay Homestead Site And Building Enhancements

Project Location:
400 Jay Street
Katonah NY 10536

Key Plan



REVISIONS		
Rev No	Description	Date

Drawn By:
LFG

Design By:
LFG


Checked By:
LFG

Approved By:
LFG

DATE
07/10/24

Sheet Title

Seal and Signature



Project Number:
TA-JJ-2023-001

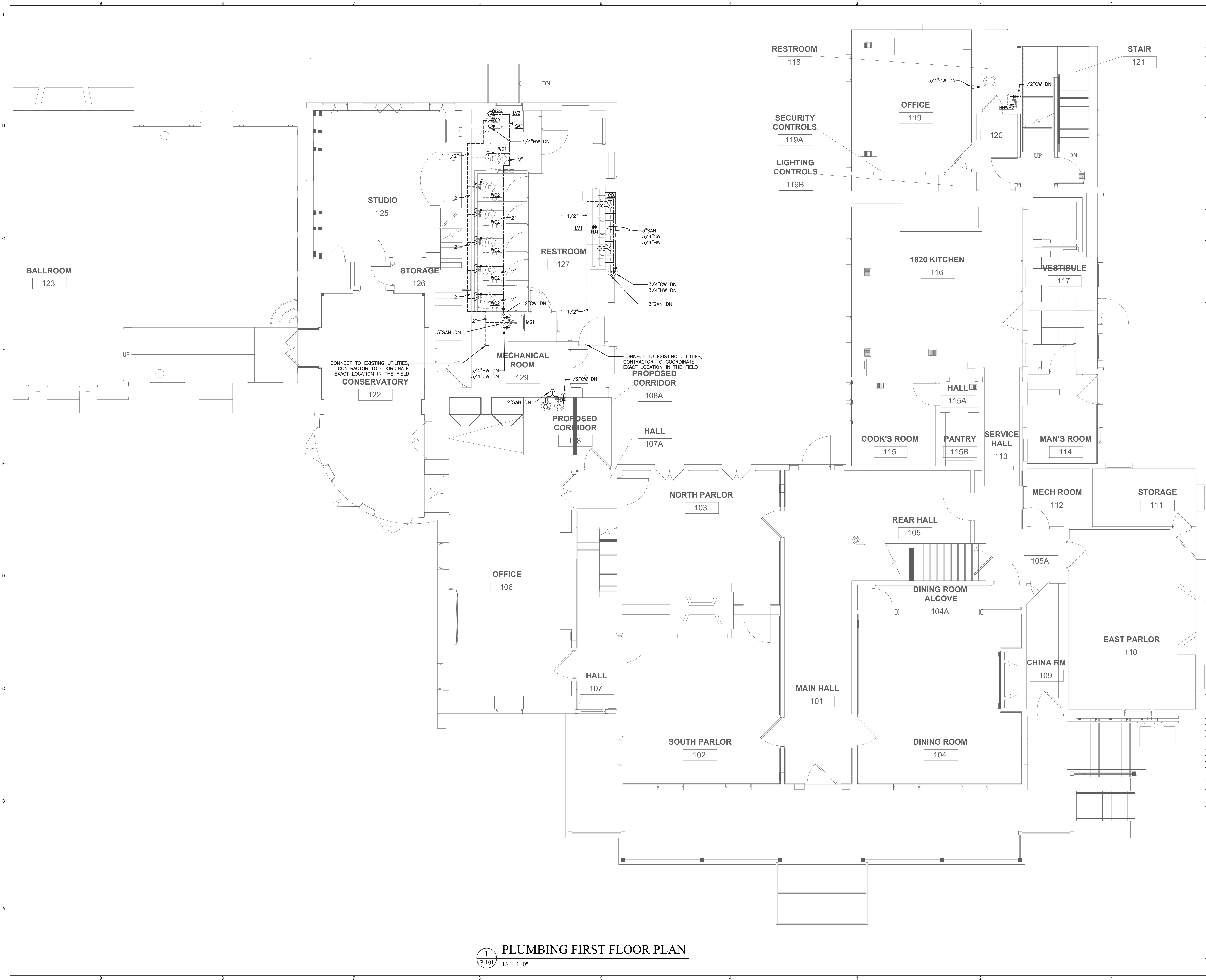
Drawing Number


P-100

Project Number:
TA-JJ-2023-001

Sheet:
311 of 327

BASEMENT PLUMBING PLAN
1
P-100
1/4"=1'-0"





Governor Kathy HochulCommissioner Pro Tempore Randy Simons

IT IS A VIOLATION OF STATE EDUCATION LAW FOR ANY PERSON, UNLESS UNDER THE DIRECTION OF A LICENSED ARCHITECT/ENGINEER TO ALTER THIS DOCUMENT IN ANYWAY. ALTERATIONS MUST HAVE THE SEAL AFFIXED ALONG WITH A DESCRIPTION OF THE ALTERATIONS, DATE AND ARCHITECT/ENGINEER'S SIGNATURE.

Architectural Consultant
BEYER BLINDER BELLE ARCHITECTS & PLANNERS
120 BROADWAY, 20TH FLOOR, NEW YORK, NY 10071

BEYER BLINDER BELLE

Structural Consultant
THORNTON TOMASETTI
120 BROADWAY, 15TH FLOOR, NEW YORK, NY 10071

Thornton Tomasetti

MEP / FP / IT Consultant
LANDMARKS FACILITIES GROUP
252 EAST AVENUE, NORWALK, CT 06855

LFG
LANDMARKS FACILITIES GROUP, INC.

Civil Consultant
CMA CONSULTING, INC.
3 WINNERS CIRCLE, PO BOX 828, ALBANY, NY 12205

CMA

Landscape Consultant
RHODESIDE HAWELL LANDSCAPE ARCHITECTURE
347 WEST 36TH STREET, SUITE 1201, NEW YORK, NY 10018

RHL

Lighting Consultant
HLB LIGHTING
36 EAST 32ND STREET, 11TH FLOOR, NEW YORK, NY 10016

HLB

Signage Consultant
LVCK - A BEYER BLINDER BELLE STUDIO
120 BROADWAY, 20TH FLOOR, NEW YORK, NY 10071

LVCK | A Beyer Blinder Belle Studio

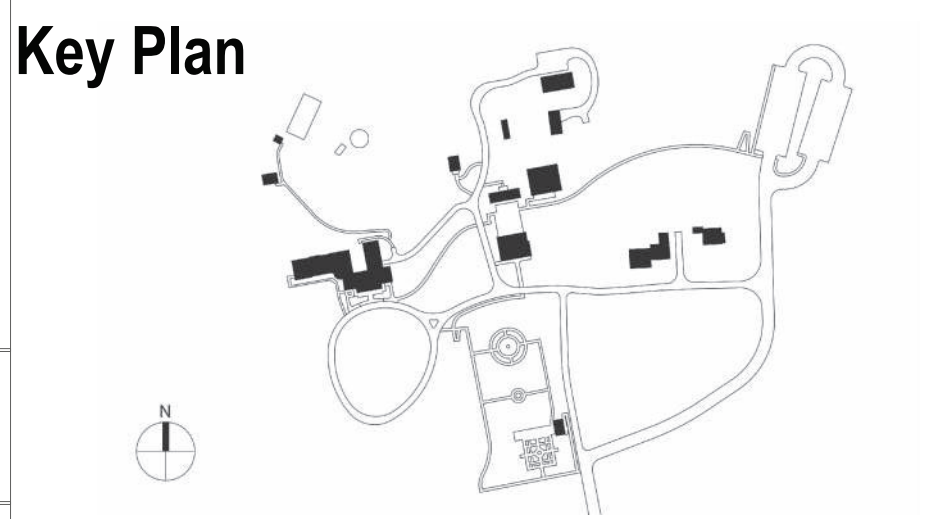
NYS OPRHP Taconic Region
9 Old Post Rd, PO Box 308
Staatsburg, NY 12580
(845) 889 - 4100

Regional Director: Linda Cooper
Capital District Manager: Garrett Jobson

Project Title:
John Jay Homestead Site And Building Enhancements

Project Location:
400 Jay Street
Katonah NY 10536

Key Plan



REVISIONS		
Rev No	Description	Date

Drawn By:
LFG


Design By:
LFG

Checked By:
LFG

Approved By:
LFG

DATE
07/10/24

Seal and Signature



Sheet Title

BEDFORD HOUSE -
PLUMBING 1ST FLOOR
PLAN

Drawing Number

P-101

Project Number:
TA-JJ-2023-001

Sheet:
312 of 327

PLUMBING FIRST FLOOR PLAN
1/4"=1'-0"

