

New York State
Parks, Recreation and
Historic Preservation

Governor Kathy Hochul

Commissioner Pro Tempore Randy Simons

IT IS A VIOLATION OF STATE EDUCATION LAW FOR ANY PERSON, UNLESS UNDER THE DIRECTION OF A LICENSED ARCHITECT/ENGINEER TO ALTER THIS DOCUMENT IN ANYWAY. ALTERATIONS MUST HAVE THE SEAL, AFFIXED ALONG WITH A DESCRIPTION OF THE ALTERATIONS, DATE AND ARCHITECT/ENGINEER'S SIGNATURE. COPYRIGHT © 2015

Architectural Consultant
BEYER BLINDER BELLE ARCHITECTS & PLANNERS
120 BROADWAY, 20TH FLOOR, NEW YORK, NY 10071

BEYER
BLINDER
BELLE

Structural Consultant
THORNTON TOMASETTI
120 BROADWAY, 15TH FLOOR, NEW YORK, NY 10071

Thornton
Tomasetti

MEP / FP / IT Consultant
LANDMARKS FACILITIES GROUP
252 EAST AVENUE, NORWALK, CT 06855

LFG
LANDMARKS
FACILITIES
GROUP, INC.

Civil Consultant
CNA CONSULTING, INC.
2 WINNERS CIRCLE, PO BOX 5088, ALBANY, NY 12205

CNA

Landscape Consultant
RHODESSE HARWELL LANDSCAPE ARCHITECTURE
341 WEST 36TH STREET, SUITE 1201, NEW YORK, NY 10018

RHI

Lighting Consultant
HLB LIGHTING
35 EAST 32ND STREET, 11TH FLOOR, NEW YORK, NY 10016

HLB

Signage Consultant
LVCK - A BEYER BLINDER BELLE STUDIO
120 BROADWAY, 20TH FLOOR, NEW YORK, NY 10071

LVCK | A Beyer Blinder Belle Studio

NYS OPRHP Taconic Region

9 Old Post Rd, PO Box 308
Staatsburg, NY 12580
(845) 889 - 4100

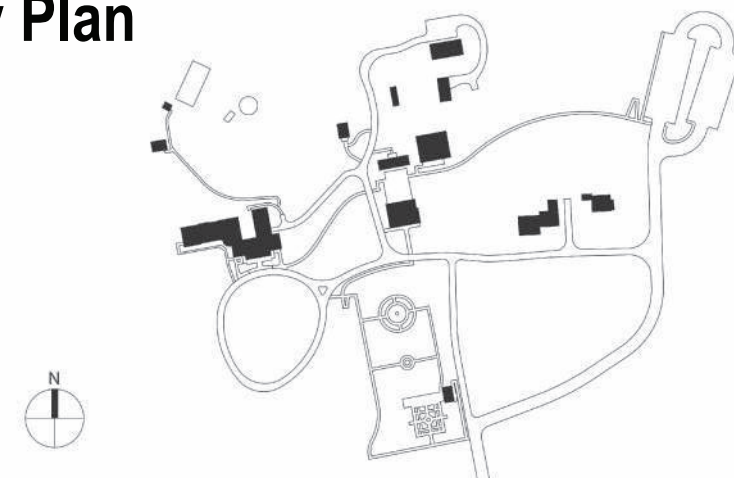
Regional Director: Linda Cooper
Capital District Manager: Garrett Jobson

Project Title:
John Jay Homestead Site And Building
Enhancements

Project Location:

400 Jay Street
Katonah NY 10536

Key Plan



REVISIONS

Rev No	Description	Date

Drawn By:

PRS

Design By:

PRS

Checked By:

NFA

Approved By:

RWS

DATE

7/10/2024

Sheet Title

CARRIAGE BARN -
RESTROOM PLAN
AND ELEVATIONS

Project Number:
TA-JJ-2023-001

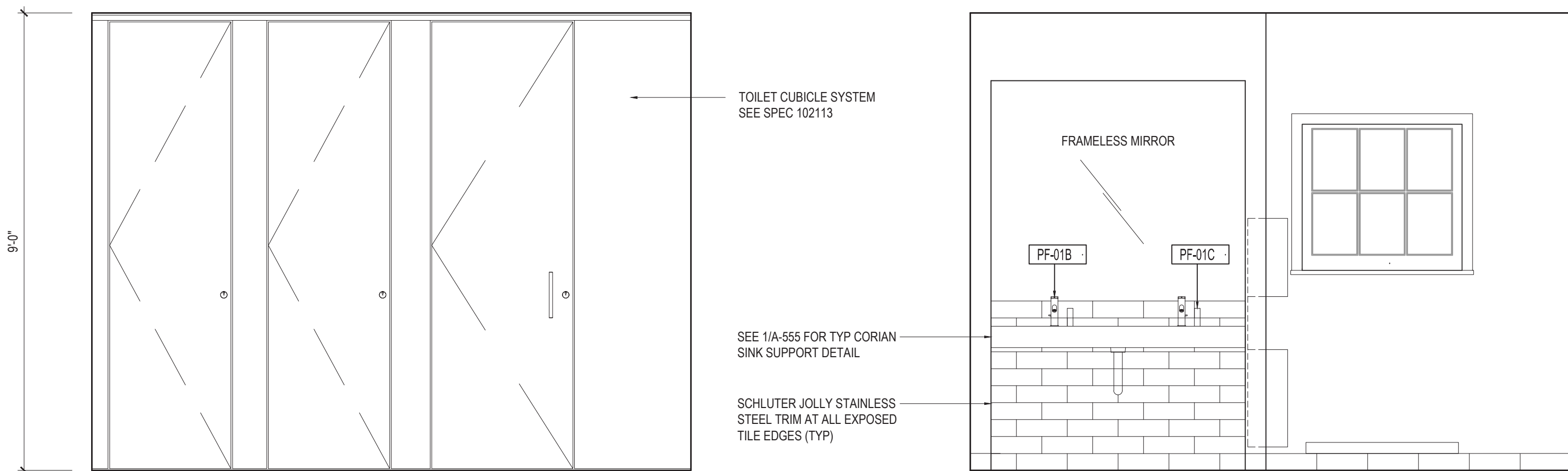
Seal and Signature



Drawing Number

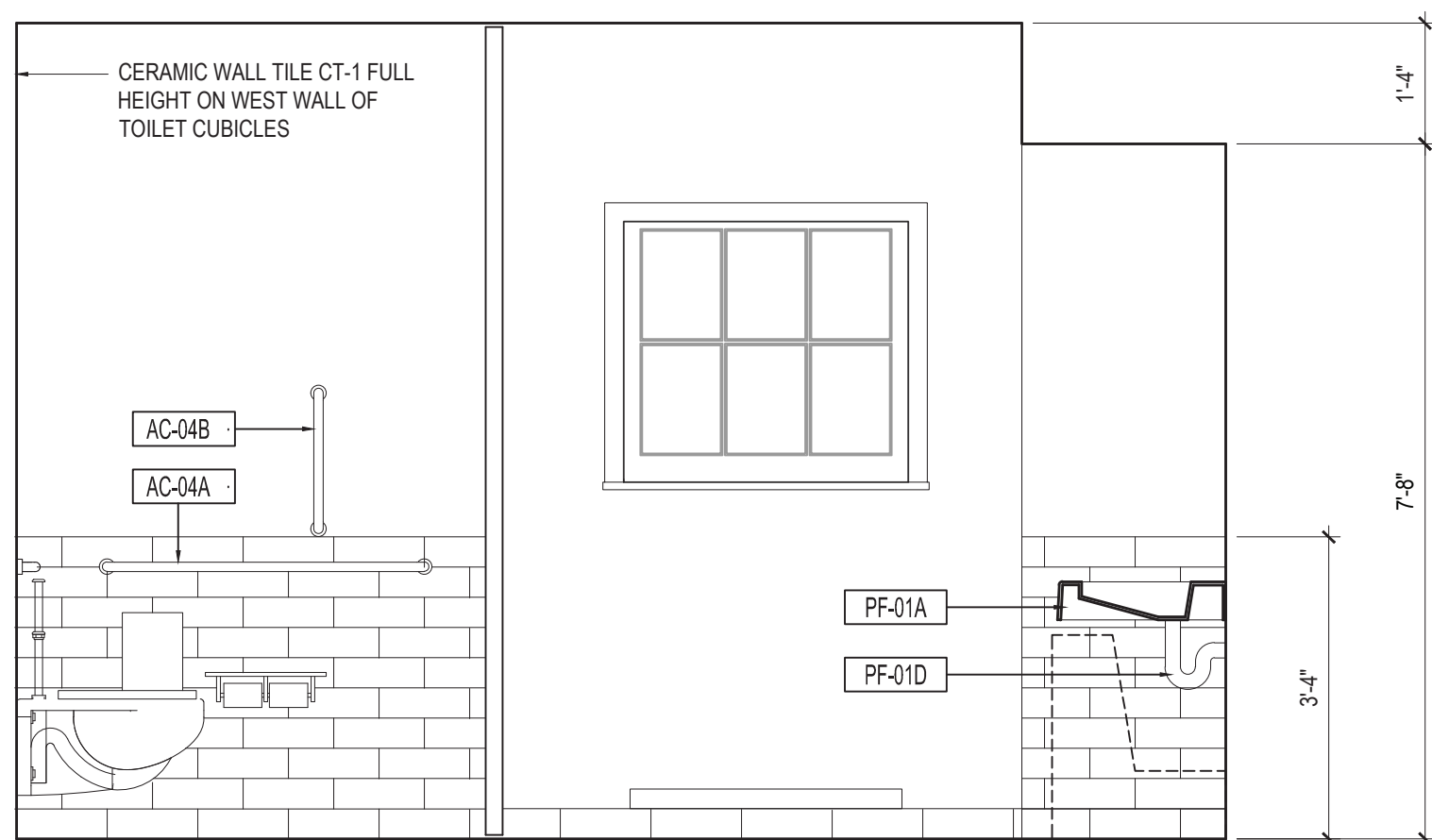
A-112

Sheet:
105 of 327



5
A-112
RESTROOM
WEST ELEVATION
1/2"=1'-0"

4
A-112
RESTROOM
EAST ELEVATION
1/2"=1'-0"



3
A-112
RESTROOM
NORTH ELEVATION
1/2"=1'-0"



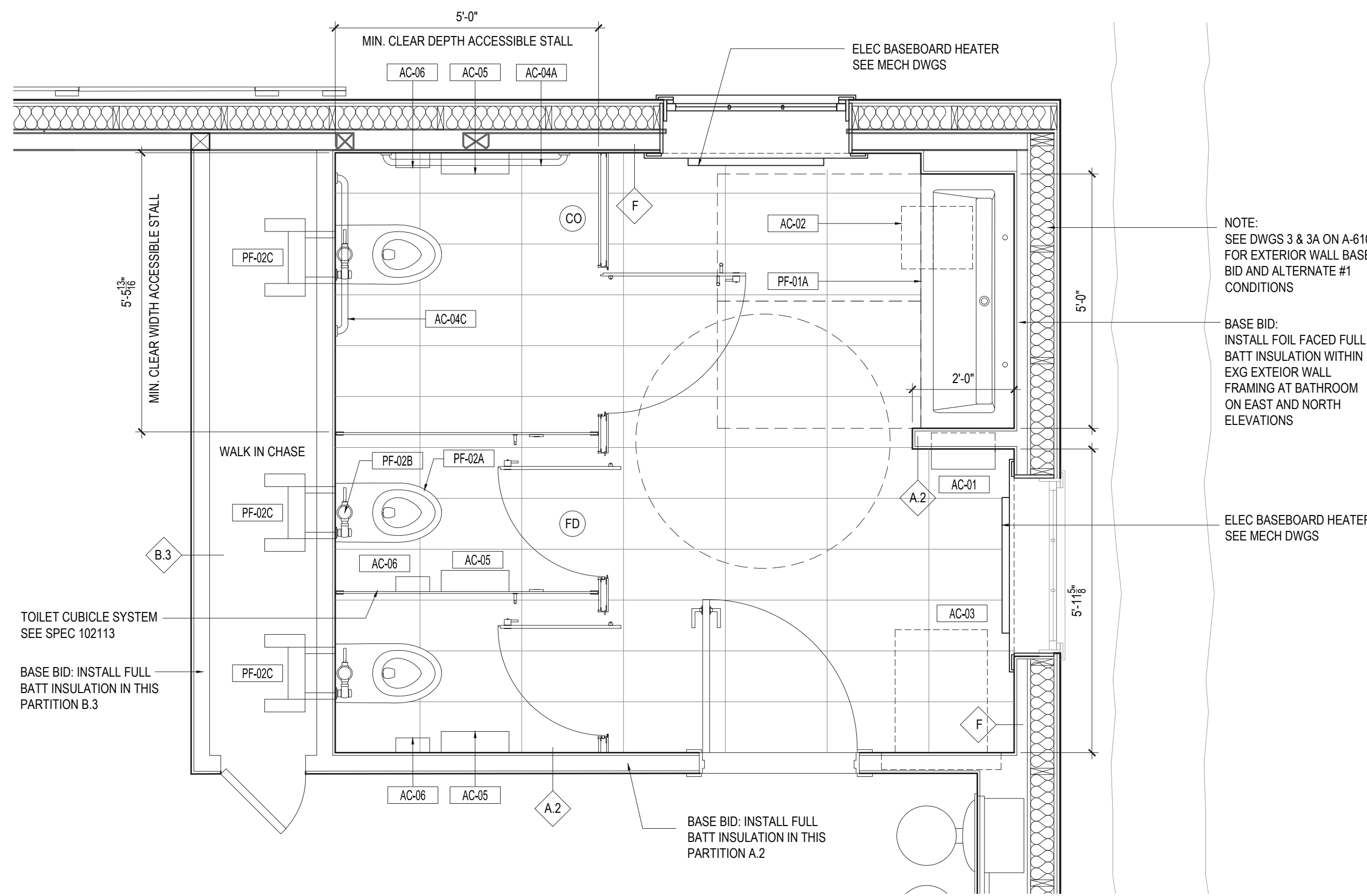
2
A-112
RESTROOM
SOUTH ELEVATION
1/2"=1'-0"

CARRIAGE BARN RESTROOM PLUMBING FIXTURE SCHEDULE

NUMBER	DESCRIPTION	MANUFACTURER	MODEL NUMBER	FINISH/COLOR	NOTES
PF-01A	SINK (2 UNIT WALL MOUNTED)	SLOAN	ELGR-82000	CARRARA CREMA	22" X 60" CORIAN SOLID SURFACE
PF-01B	FAUCET	CHICAGO	3522-E2805ABCP	POLISHED CHROME	DUAL SUPPLY, 0.5 GPM DECK MOUNTED METERING, LONG-REACH SPOUT
PF-01C	SOAP DISPENSER	KOHLER	K-1995	POLISHED CHROME	DECK-MOUNTED MANUAL PUMP
PF-01D	ADA PIPE PROTECTION	TRUEBO	82193	CHINA WHITE VINYL	P-TRAP & VALVE PROTECTION
PF-01E	MIXING VALVE	DELTA	R2910-MIXLF	SOLID BRASS BODY	
PF-02A	WATER CLOSET	SLOAN	S1-2459	WHITE VITREOUS CHINA	
PF-02B	MANUAL FLUSH VALVE	SLOAN	ROYAL 111 1.28-SF	BRUSHED STAINLESS STEEL	
PF-02C	WALL CARRIER	WATTS	ISCA SERIES		
PF-02D	WATER CLOSET SEAT	CENTOCO	550STSCSS-001	WHITE POLYPROPYLENE	
PF-03	FOUNTAIN & BOTTLE FILLING STATION	ELKAY	LZWS-LRPBM28K	STAINLESS STEEL	

CARRIAGE BARN RESTROOM ACCESSORIES SCHEDULE

NUMBER	DESCRIPTION	MANUFACTURER	MODEL NUMBER	FINISH/COLOR	NOTES
AC-01	PAPER TOWEL/TRASH RECEPTACLE	BOBRICK	B-3961	SATIN STAINLESS STEEL	RECESSED/WALL MOUNTED, MAUAL ROLL DISPENSER
AC-02	STEP STOOL	STEP 'N' WASH	SNW-SS975B	SATIN STAINLESS STEEL	ANCHORED TO FLOOR
AC-03	BABY CHANGING STATION	ASI	9017	SATIN STAINLESS STEEL	VERTICAL ORIENTATION
AC-04A	GRAB BAR (1-1/4" DIAMETER) 42"	BOBRICK	B-5805	SATIN/SLIP RESISTANT FINISH	42" SIDE WALL HORIZONTAL
AC-04B	GRAB BAR (1-1/4" DIAMETER) 18"	BOBRICK	B-5805	SATIN/SLIP RESISTANT FINISH	18" SIDE WALL VERTICAL
AC-04C	GRAB BAR (1-1/4" DIAMETER) 36"	BOBRICK	B-5805	SATIN/SLIP RESISTANT FINISH	36" BACK WALL HORIZONTAL
AC-05	TOILET TISSUE DISPENSER & UTILITY SHELF	BOBRICK	B-2840	SATIN STAINLESS STEEL	SURFACE MOUNTED
AC-06	SANITARY NAPKIN DISPENSER	BOBRICK	B-35139	SATIN STAINLESS STEEL	



1
A-112
RESTROOM
PLAN
1/2"=1'-0"