

2 SECOND FLOOR PIPING PLAN - AREA C  
SCALE: 1/8" = 1'-0"

1 SECOND FLOOR DUCTWORK PLAN - AREA C  
SCALE: 1/8" = 1'-0"

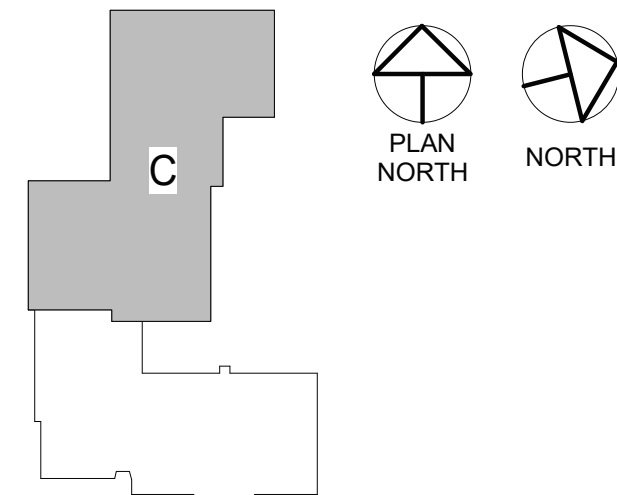
### GENERAL NOTES:

- SEE DRAWING M5000 FOR GENERAL NOTES, ABBREVIATIONS, SYMBOLS AND LEGENDS

### KEYNOTE LEGEND

- PROVIDE VRF CEILING CASSETTE, REFRIGERATION PIPING, CONTROLS, AND ALL ASSOCIATED ACCESSORIES. PROVIDE REMOTE TEMPERATURE CONTROLLER BY MANUFACTURER AND SPACE TEMPERATURE SENSOR TO MONITOR ROOM TEMPERATURE. COORDINATE WITH EC TO PROVIDE POWER. INSTALL PER MANUFACTURERS RECOMMENDATIONS.
- PROVIDE WALL MOUNTED ELECTRIC UNIT HEATER, CONTROLS, AND ALL ASSOCIATED ACCESSORIES. PROVIDE SUPPORTS TO MOUNT UNIT TO WALL. COORDINATE WITH EC TO PROVIDE POWER. INSTALL PER MANUFACTURERS RECOMMENDATIONS.
- PROVIDE CEILING MOUNTED ELECTRIC HEATER, CONTROLS, AND ALL ASSOCIATED ACCESSORIES. MOUNT ELECTRIC HEATER FLUSH WITH GRID AND CENTER UNLESS OTHERWISE NOTED. COORDINATE WITH EC TO PROVIDE POWER. INSTALL PER MANUFACTURERS RECOMMENDATIONS.
- PROVIDE WALL MOUNTED COOLING ONLY UNIT, REFRIGERATION PIPING, CONTROLS, AND ALL ASSOCIATED ACCESSORIES. PROVIDE SUPPORTS TO MOUNT UNIT TO WALL. COORDINATE WITH EC TO PROVIDE POWER. INSTALL PER MANUFACTURERS RECOMMENDATIONS.
- PROVIDE DUCT MOUNTED ELECTRIC COIL, CONTROLS, AND ALL ASSOCIATED ACCESSORIES. COORDINATE WITH EC TO PROVIDE POWER. INSTALL PER MANUFACTURERS RECOMMENDATIONS.

KEY PLAN:



SED NO. 44-09-01-04-0-005-008

THIS SHEET INCORPORATES COLOR GRAPHICS WHICH INDICATE IMPORTANT INFORMATION AND SHALL BE PRINTED IN COLOR IF REPRODUCED BY A CONTRACTOR.

**BCA Architects & Engineers**  
Watertown | Ithaca | Saratoga Springs | Rochester  
WWW.THEBCAGROUP.COM

COPYRIGHT © 2022 - BCA ARCHITECTS & ENGINEERS. WARNING - IT IS A VIOLATION OF THE NEW YORK STATE EDUCATION LAW FOR ANY UNAUTHORIZED ALTERATIONS TO THIS DOCUMENT AS PER ARTICLE 145 AND 147.

**BCA**  
ARCHITECTS  
ENGINEERS



HIGHLAND FALLS-FORT MONTGOMERY CSD  
ALTERATIONS AND ADDITIONS TO:  
FORT MONTGOMERY ELEMENTARY SCHOOL

HIGHLAND FALLS - ORANGE COUNTY - NEW YORK

REV DATE DESCRIPTION  
07/11/2024 BID ADDENDUM #2

DRAWN BY PROJECT NUMBER  
JVG/DK 2022-138  
CHECKED BY DATE  
JLM 07/10/2024

SECOND FLOOR PLAN - AREA C

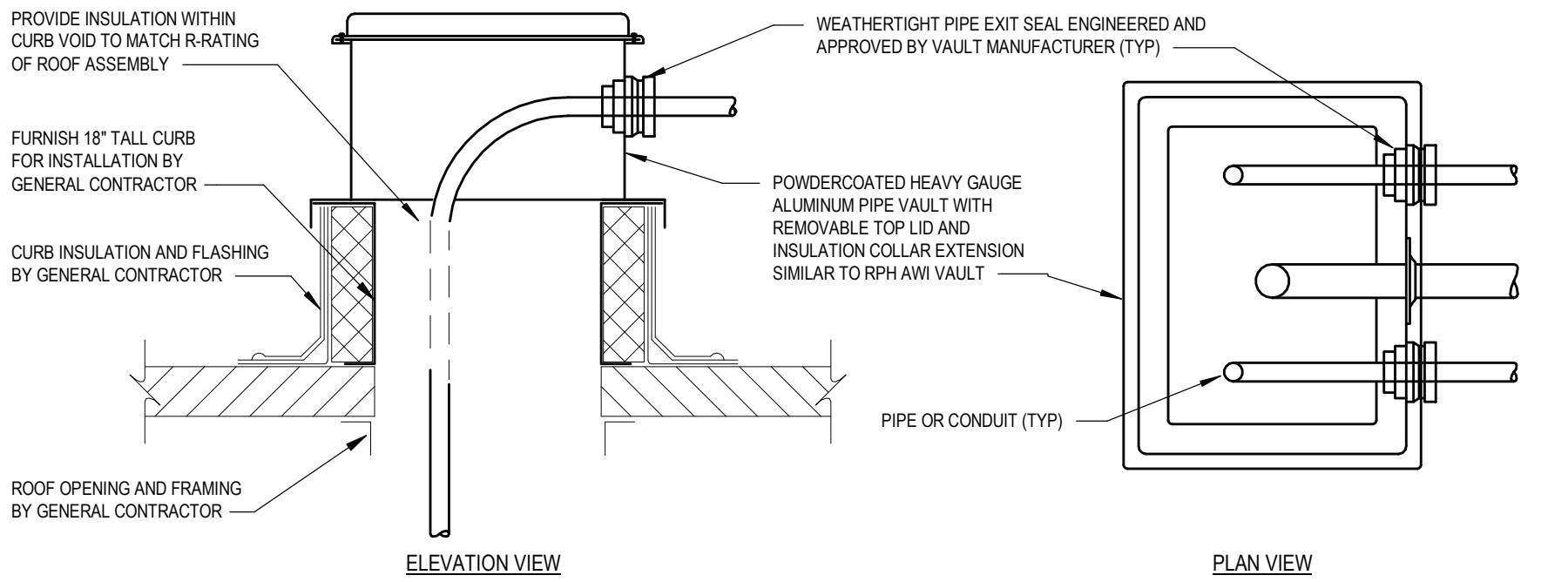
BUILDING NUMBER SHEET NUMBER

ES

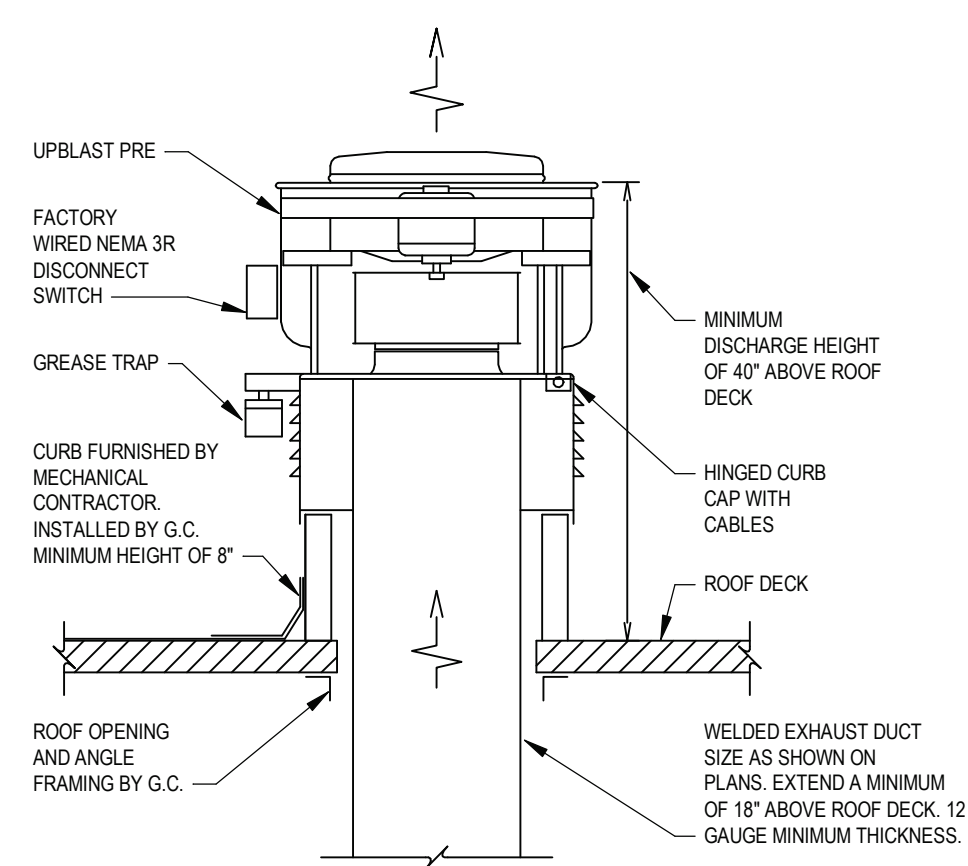
M102



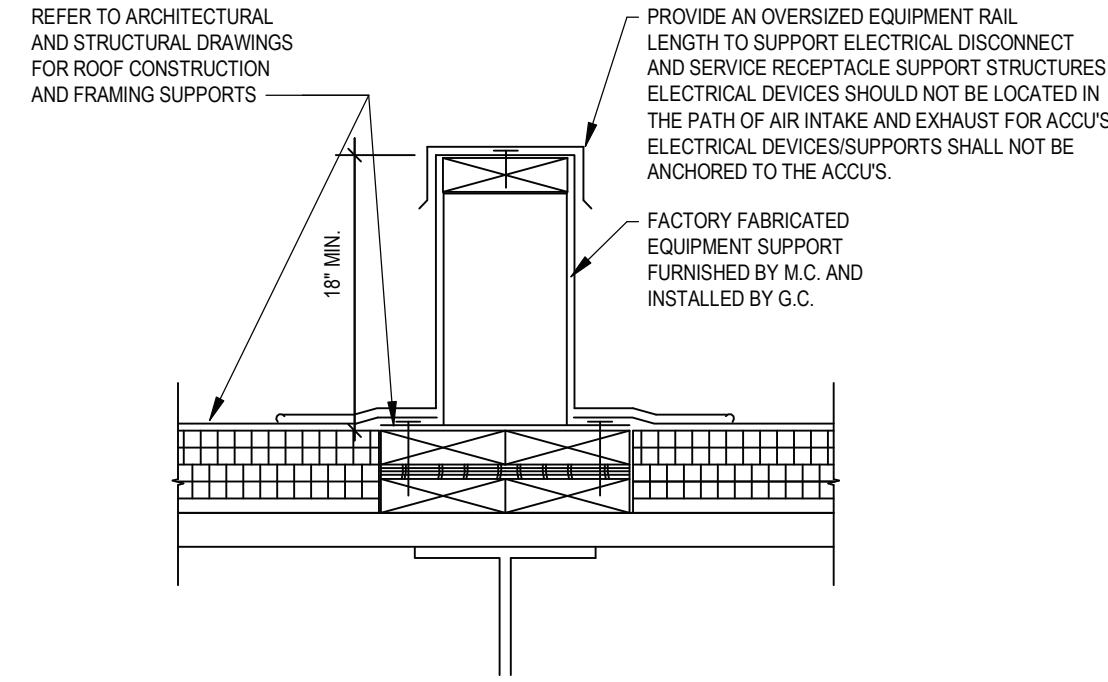




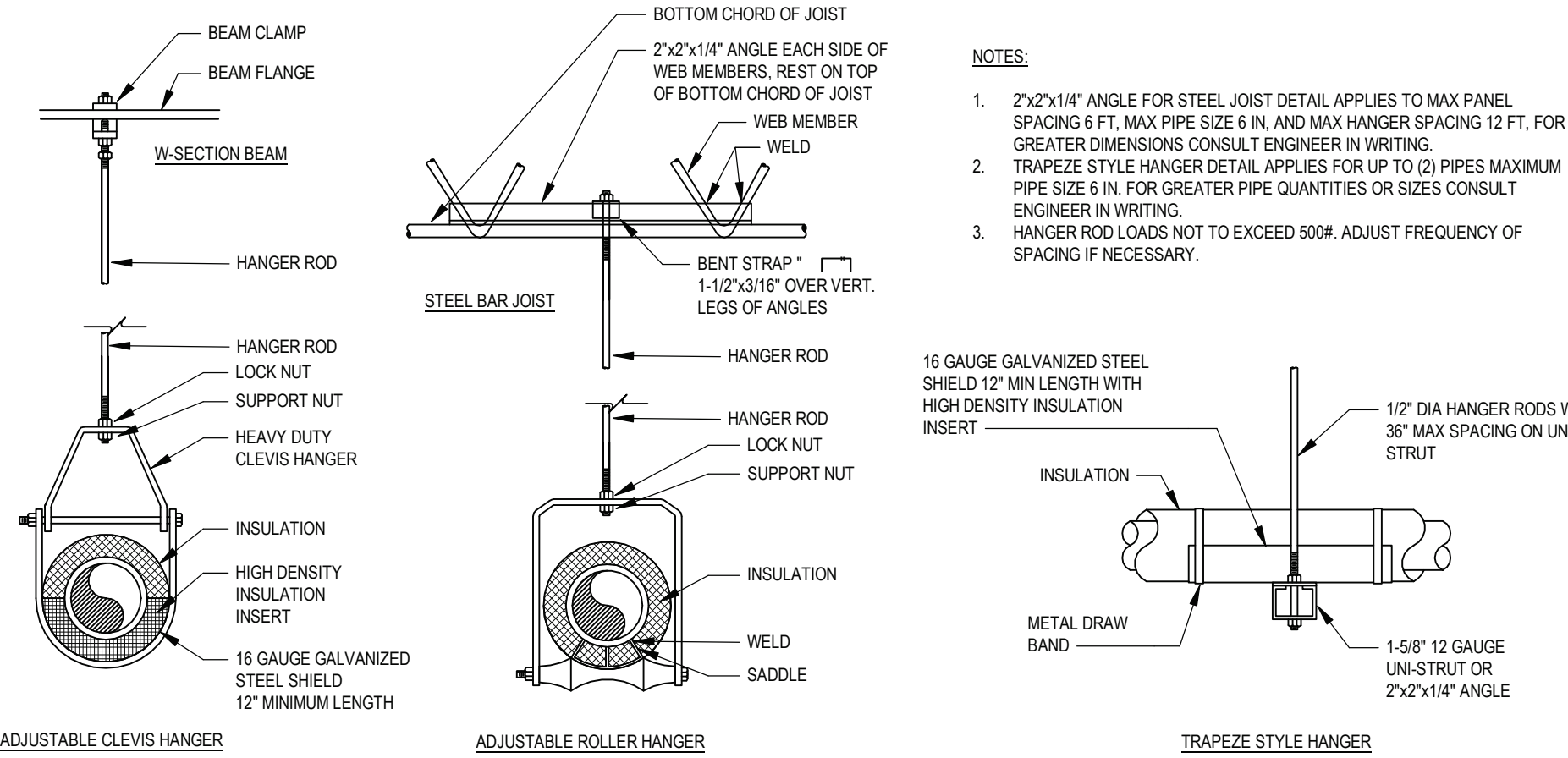
9 ROOF PIPE PENETRATION VAULT DETAIL  
SCALE: NOT TO SCALE



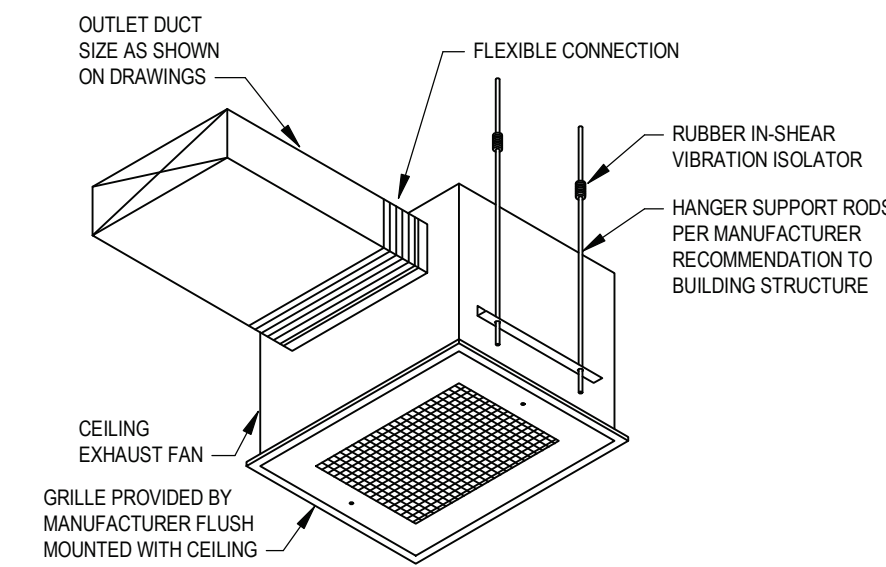
5 KITCHEN POWER ROOF EXHAUSTER DETAIL  
SCALE: NOT TO SCALE



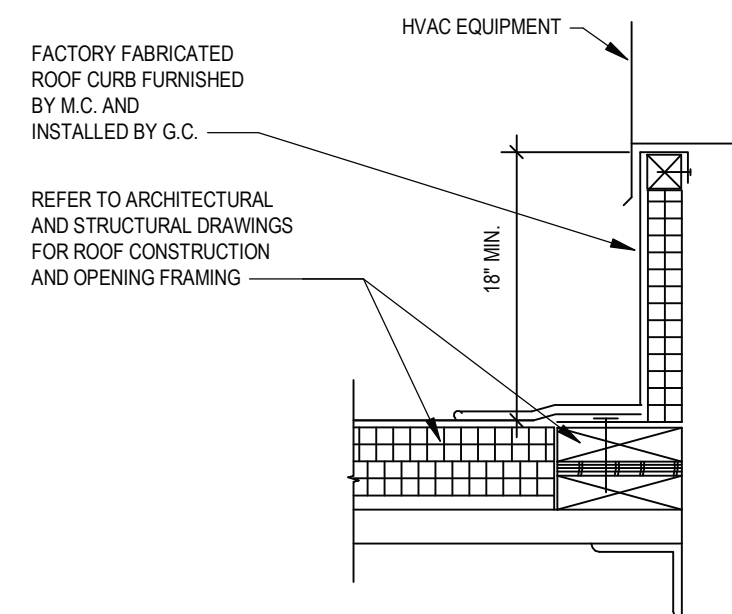
1 ROOF EQUIPMENT SUPPORT DETAIL  
SCALE: NOT TO SCALE



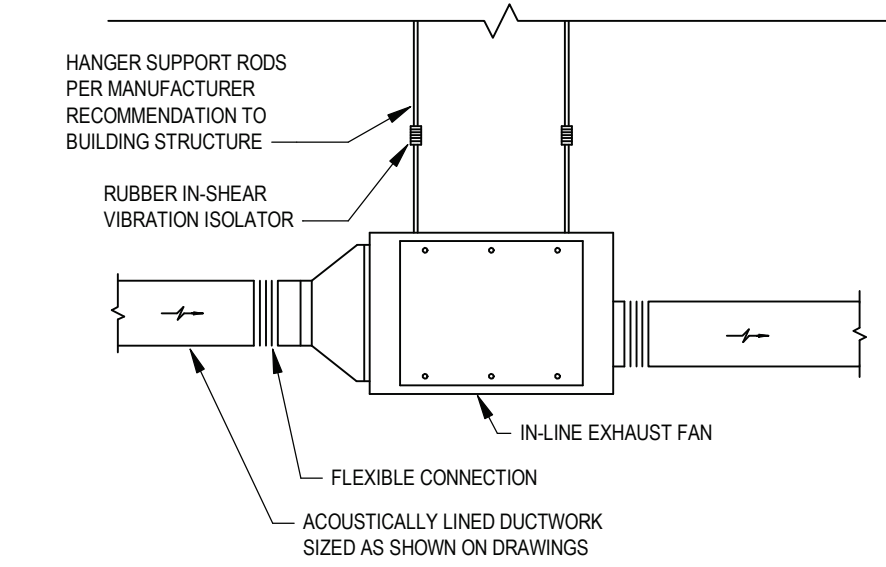
10 PIPE HANGER DETAILS  
SCALE: NOT TO SCALE



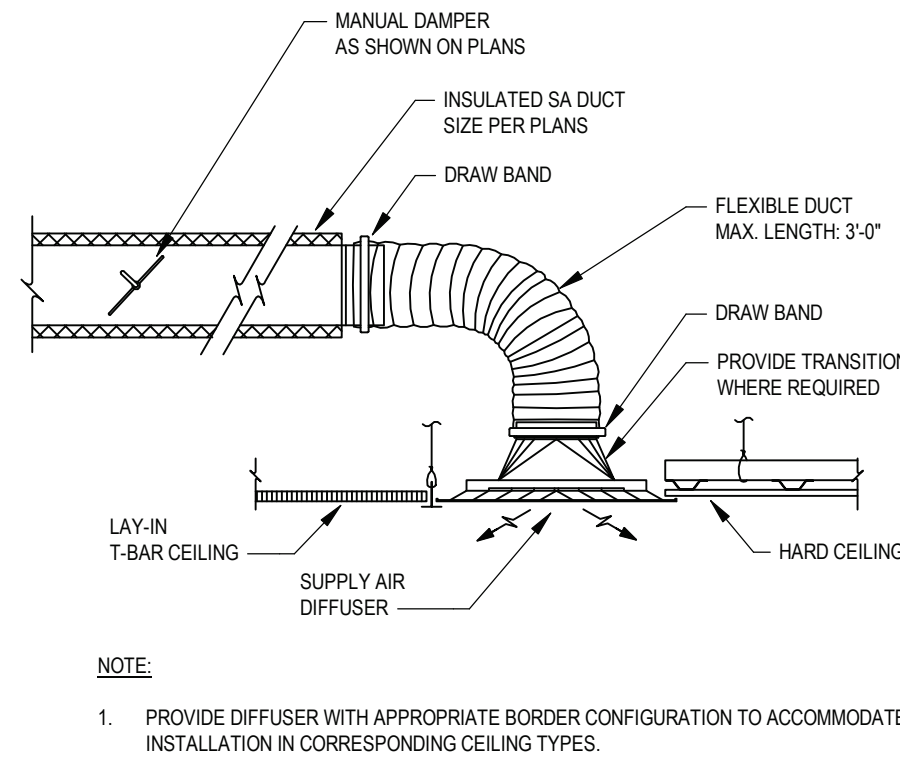
6 CEILING EXHAUST FAN DETAIL  
SCALE: NOT TO SCALE



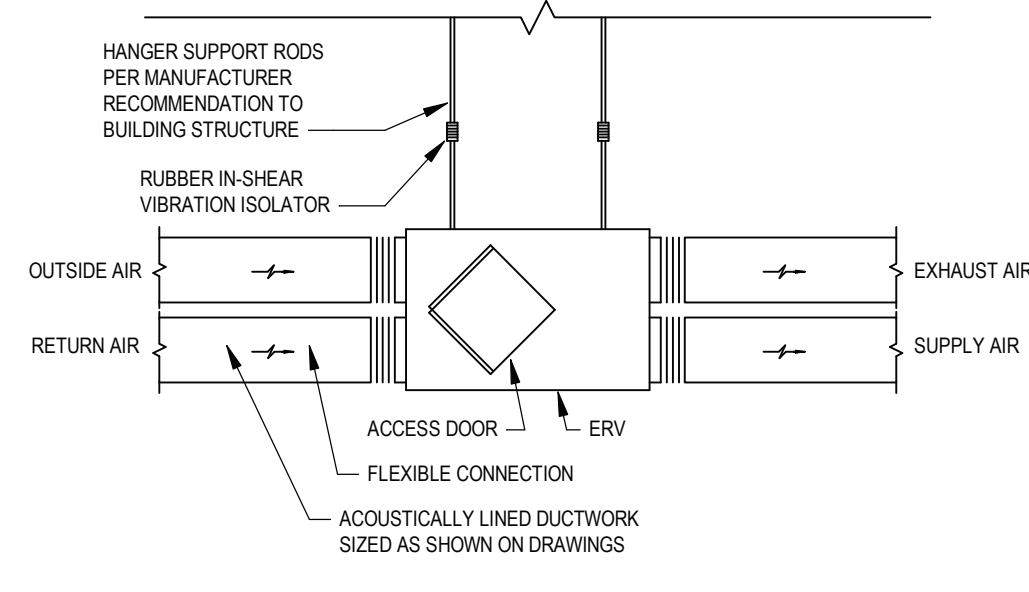
2 ROOF CURB DETAIL  
SCALE: NOT TO SCALE



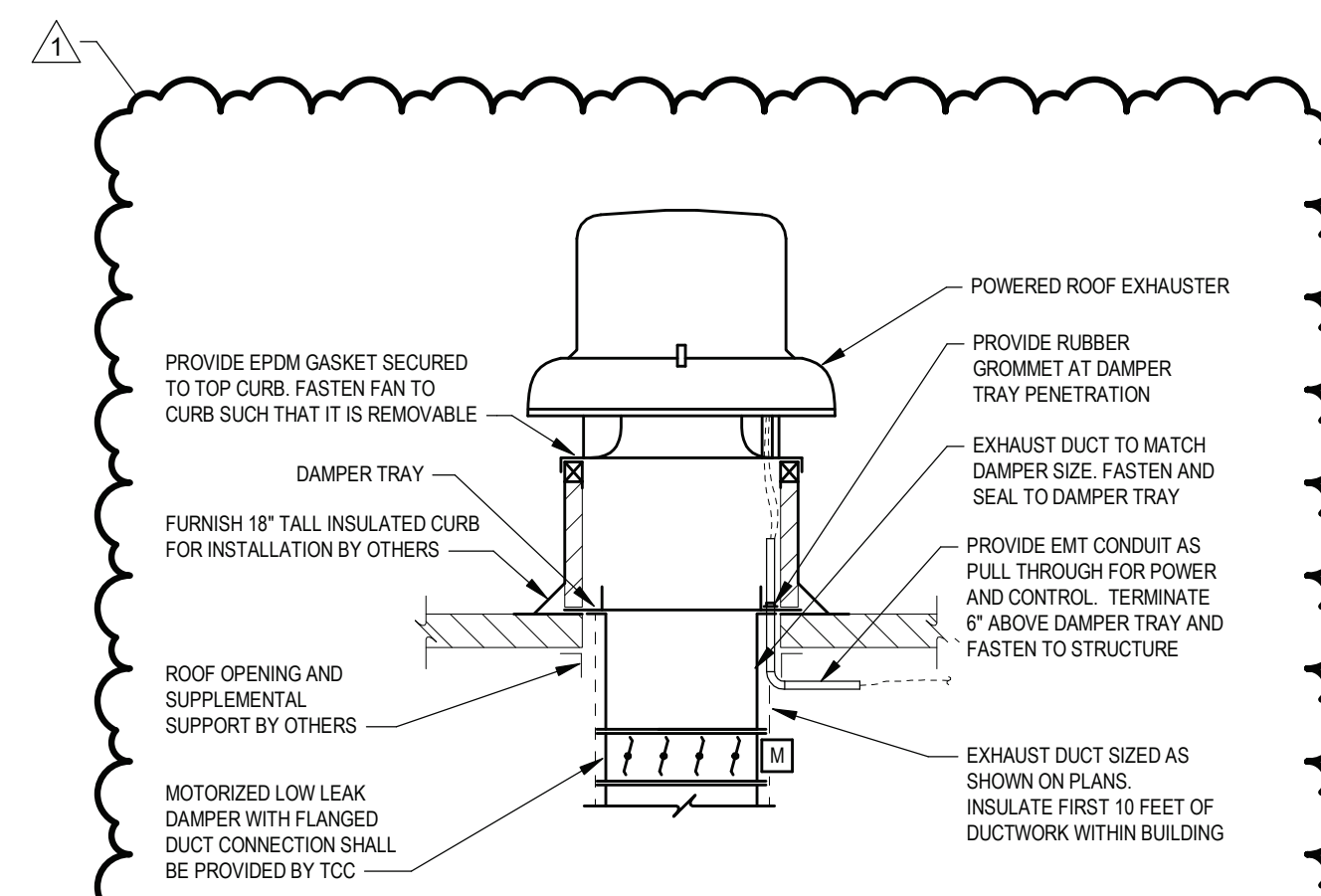
7 IN-LINE EXHAUST FAN DETAIL  
SCALE: NOT TO SCALE



3 CEILING DIFFUSER DETAIL  
SCALE: NOT TO SCALE



8 CEILING HUNG ERV DETAIL  
SCALE: NOT TO SCALE



4 POWER ROOF EXHAUSTER DETAIL  
SCALE: NOT TO SCALE

SED NO. 44-09-01-04-0-005-008  
THIS SHEET INCORPORATES COLOR GRAPHICS WHICH INDICATE IMPORTANT INFORMATION AND SHALL BE PRINTED IN COLOR IF REPRODUCED BY A CONTRACTOR.  
**BCA Architects & Engineers**  
Watertown | Ithaca | Saratoga Springs | Rochester  
WWW.THEBCGGROUP.COM  
COPYRIGHT © 2022 - BCA ARCHITECTS & ENGINEERS. WARNING - IT IS A VIOLATION OF THE NEW YORK STATE EDUCATION LAW FOR ANY UNAUTHORIZED ALTERATIONS TO THIS DOCUMENT AS PER ARTICLE 145 AND 147.



HIGHLAND FALLS-FORT MONTGOMERY CSD  
ALTERATIONS AND ADDITIONS TO:  
FORT MONTGOMERY ELEMENTARY SCHOOL  
HIGHLAND FALLS - ORANGE COUNTY - NEW YORK

REV	DATE	DESCRIPTION
1	07/11/2024	BID ADDENDUM #2
DRAWN BY	JVG/DK	PROJECT NUMBER
CHECKED BY	JLM	DATE

MECHANICAL DETAILS  
BUILDING NUMBER SHEET NUMBER  
**ES M500**





SUPPLY FAN (SF) SCHEDULE																					
ID	LOCATION		MANUFACTURER	MODEL NO.	TYPE	FAN								SOUND PRESS LEVEL (dBA)	UNIT WEIGHT	FLA	MCA	MOCp	VOLT	PH	NOTES
	NAME					AIRFLOW DESIGN	VELOCITY OUTLET	PRESS ESP	RPM	DRIVE TYPE	MOTOR										
SF-1	ROOF		GREENHECK	KSQ-94M1-VG	MIXED FLOW FILTERED ROOF SUPPLY	780 CFM	887 FPM	0.50 in-wg	1690	DIRECT	0.25 hp	RPM 1750	ECM	58	47 lb	2.9 A	4.0 A	15.0 A	115 V	1	1
NOTES: 1      INSTALL AS PER UNIT MANUFACTURERS RECOMMENDATIONS																					

[illegible]

HIGHLAND FALLS-FORT MONTGOMERY CSDB ALTERATIONS AND ADDITIONS TO: FORT MONTGOMERY ELEMENTARY SCHOOL	
HIGHLAND FALLS - ORANGE COUNTY - NEW YORK	
<b>REV</b>	<b>DATE</b>
1	07/11/2024
<b>DESCRIPTION</b>	
BID ADDENDUM #2	
DRAWN BY JVG/DCK	PROJECT NUMBER 2022-138
CHECKED BY JLM	DATE 07/10/2024
MECHANICAL EQUIPMENT SCHEDULES	
BUILDING NUMBER	SHEET NUMBER
ES	M600





7/12/2024 10:23:14 AM

1 FIRST FLOOR SIGNAGE PLAN - AREA A  
SCALE: 1/8" = 1'-0"

2 SECOND FLOOR SIGNAGE PLAN - AREA C  
SCALE: 1/8" = 1'-0"

TYPE

DESCRIPTION

S1

TYPICAL CLASSROOM OR OFFICE

S2

CLOSET, STORAGE, ELECTRICAL ROOM, ETC.

S3

GENDER NEUTRAL RESTROOM

S4

WOMENS, MENS, BOYS OR GIRLS

S5

STAFF GENDER NEUTRAL RESTROOM

S6

STAIRS

S7

EXIT STAIR

S8

ACCESSIBLE LIFT

S9

ACCESSIBLE EXIT

S10

ACCESSIBLE ENTRANCE

S11

EMERGENCY EVACUATION ROUTE

S12

SCHOOL VISITORS NOTICE

S13

MAXIMUM OCCUPANCY

S14

DOOR ALARM

S15

DO NOT USE ELEVATOR IN CASE OF FIRE

S16

DRINKING FOUNTAIN

S17

EXIT

S18

AREA OF REFUGE

S19

PUSH FOR HELP

KEY PLAN:

C

A

B

PLAN NORTH

NORTH

SED NO. 44-09-01-04-0-005-008

THIS SHEET INCORPORATES COLOR GRAPHICS WHICH INDICATE IMPORTANT INFORMATION AND SHALL BE PRINTED IN COLOR IF REPRODUCED BY A CONTRACTOR.

BCA Architects & Engineers

Watertown | Ithaca | Saratoga Springs | Rochester

WWW.THEBCGROUP.COM

COPYRIGHT © 2022 - BCA ARCHITECTS & ENGINEERS. WARNING - IT IS A VIOLATION OF THE NEW YORK STATE EDUCATION LAW FOR ANY UNAUTHORIZED ALTERATIONS TO THIS DOCUMENT AS PER ARTICLE 145 AND 147.

BCA

ARCHITECTS

ENGINEERS

HIGHLAND FALLS - FORT MONTGOMERY

HFFM

HIGHLAND FALLS-FORT MONTGOMERY CSD

ALTERATIONS AND ADDITIONS TO:

FORT MONTGOMERY ELEMENTARY SCHOOL

HIGHLAND FALLS - ORANGE COUNTY - NEW YORK

REV

DATE

DESCRIPTION

2

07/12/2024

BID ADDENDUM #2

DRAWN BY

PROJECT NUMBER

LEW

2022-138 PH1

CHECKED BY

DATE

BJL

07/12/2024

SIGNAGE PLAN TYPES/LOCATIONS

1ST FL. AREA A, 2ND FL. AREA A & C

BUILDING NUMBER

SHEET NUMBER

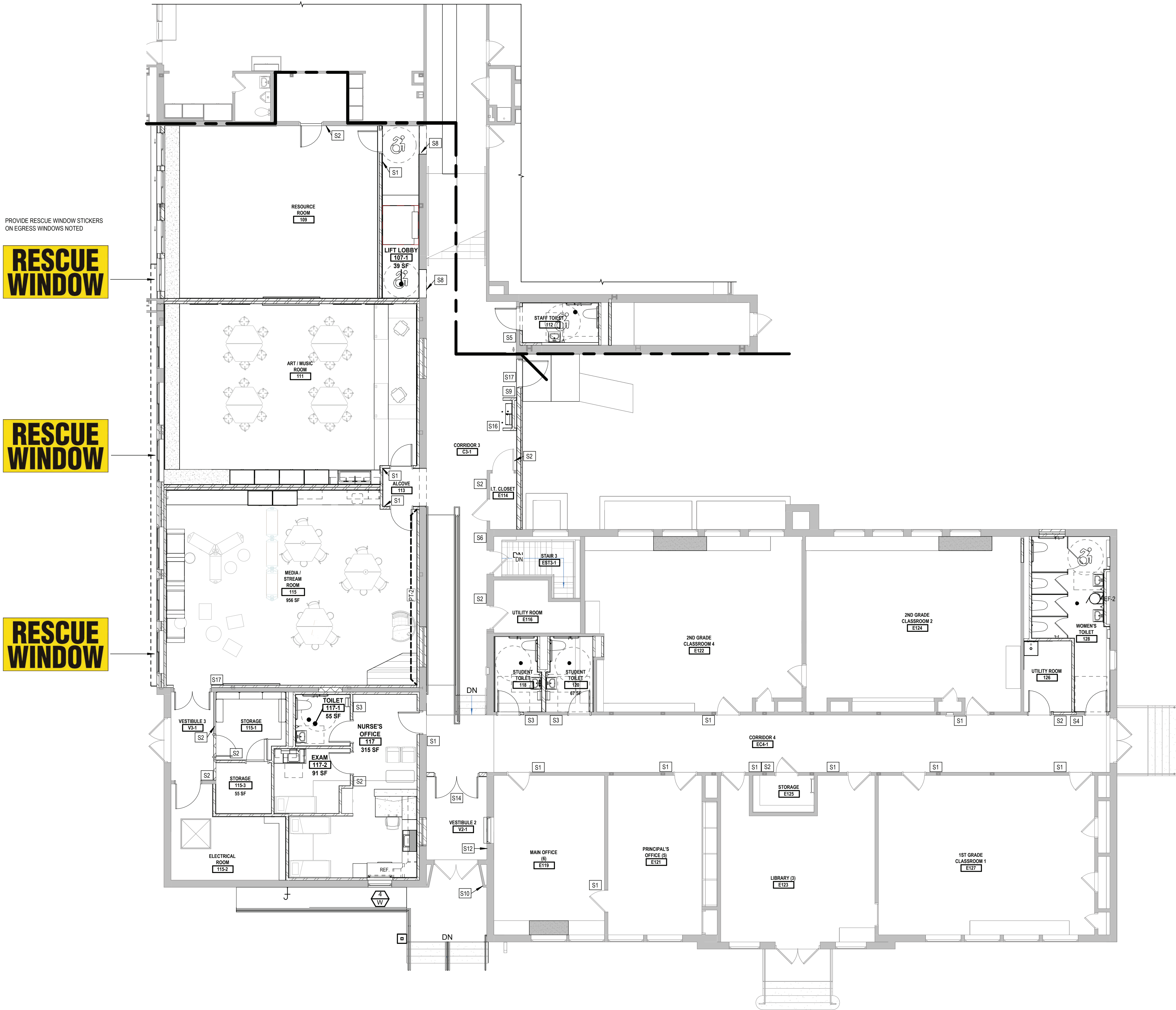
ES

A920





7/12/2024 10:23:16 AM

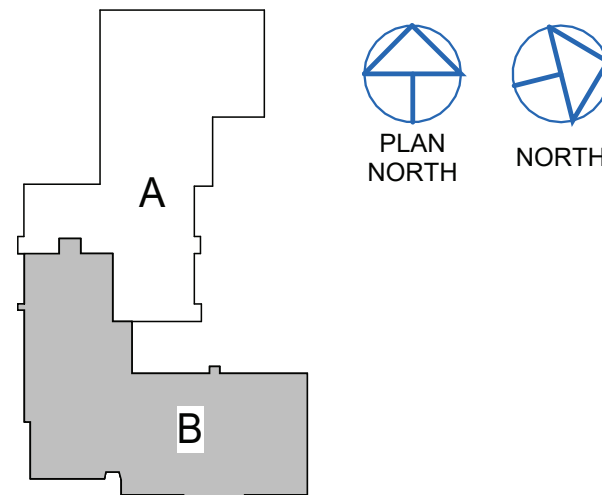


1 FIRST FLOOR SIGNAGE PLAN - AREA B  
SCALE: 1/8" = 1'-0"

SIGN TYPES KEY

TYPE	DESCRIPTION
S1	TYPICAL CLASSROOM OR OFFICE
S2	CLOSET, STORAGE, ELECTRICAL ROOM, ETC.
S3	GENDER NEUTRAL RESTROOM
S4	WOMENS, MENS, BOYS OR GIRLS
S5	STAFF GENDER NEUTRAL RESTROOM
S6	STAIRS
S7	EXIT STAIR
S8	ACCESSIBLE LIFT
S9	ACCESSIBLE EXIT
S10	ACCESSIBLE ENTRANCE
S11	EMERGENCY EVACUATION ROUTE
S12	SCHOOL VISITORS NOTICE
S13	MAXIMUM OCCUPANCY
S14	DOOR ALARM
S15	DO NOT USE ELEVATOR IN CASE OF FIRE
S16	DRINKING FOUNTAIN
S17	EXIT
S18	AREA OF REFUGE
S19	PUSH FOR HELP

KEY PLAN:



SED NO. 44-09-01-04-0-005-008

THIS SHEET INCORPORATES COLOR GRAPHICS WHICH INDICATE IMPORTANT INFORMATION AND SHALL BE PRINTED IN COLOR IF REPRODUCED BY A CONTRACTOR.

BCA Architects & Engineers  
Watertown | Ithaca | Saratoga Springs | Rochester  
WWW.THEBCGROUP.COM

COPYRIGHT © 2022 - BCA ARCHITECTS & ENGINEERS. WARNING - IT IS A VIOLATION OF THE NEW YORK STATE EDUCATION LAW FOR ANY UNAUTHORIZED ALTERATIONS TO THIS DOCUMENT AS PER ARTICLE 145 AND 147.

BCA  
ARCHITECTS  
ENGINEERS



HIGHLAND FALLS-FORT MONTGOMERY CSD  
ALTERATIONS AND ADDITIONS TO:  
FORT MONTGOMERY ELEMENTARY SCHOOL  
HIGHLAND FALLS - ORANGE COUNTY - NEW YORK

REV	DATE	DESCRIPTION
2	07/12/2024	BID ADDENDUM #2

DRAWN BY LEW	PROJECT NUMBER 2022-138 PH1
CHECKED BY BJL	DATE 07/12/2024

SIGNAGE PLAN TYPES/LOCATIONS  
1ST FL. AREA B

BUILDING NUMBER ES	SHEET NUMBER A921
-----------------------	----------------------





## 2 TYPICAL CORRIDOR/ROOM DOOR DETAIL

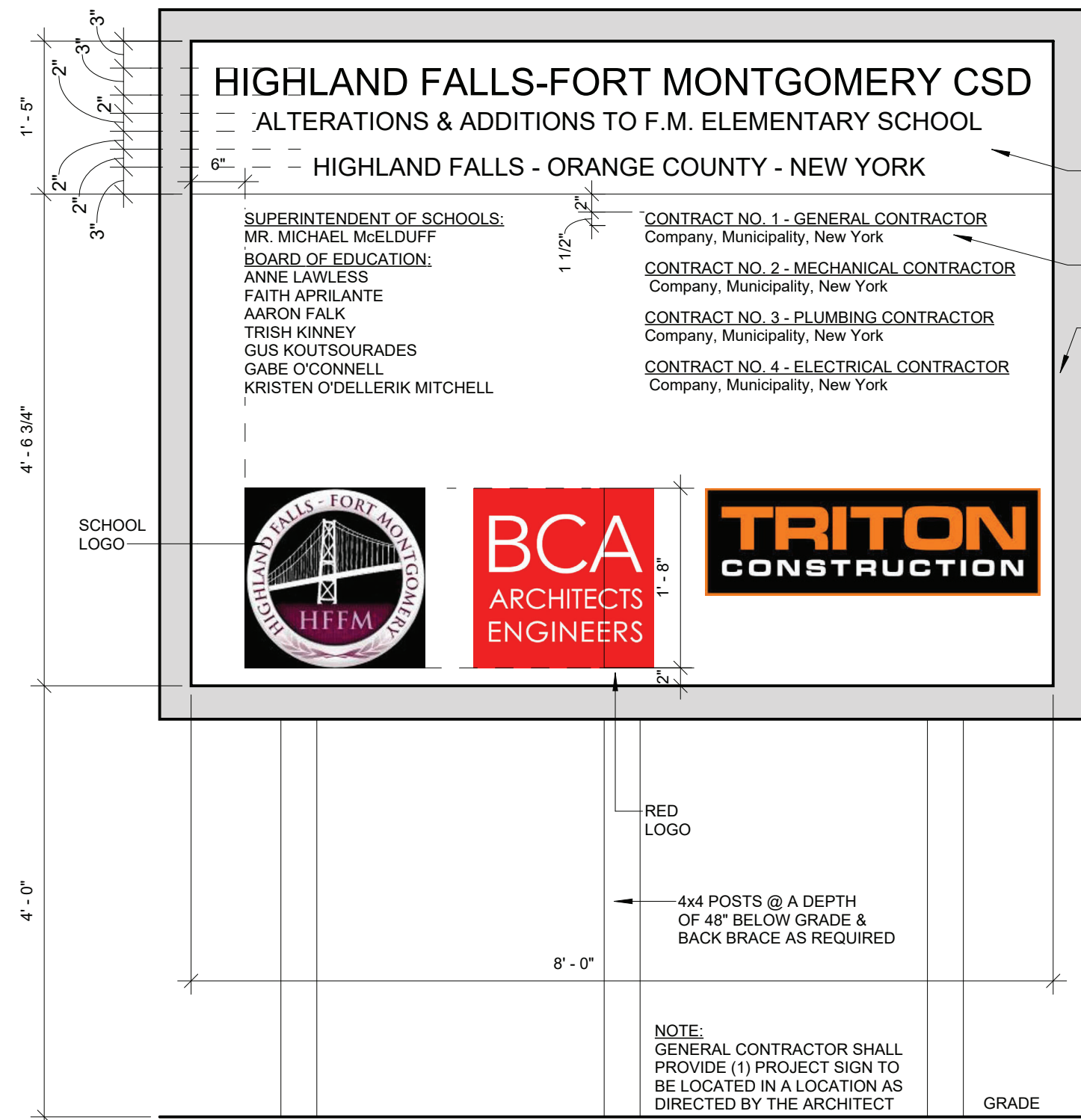
SCALE: 3/4" = 1'-0"

- NOTE:
- G.C. TO PROVIDE SIGNS PERMANENTLY IDENTIFY (FIRE WALLS, FIRE BARRIERS, FIRE PARTITIONS, SMOKE BARRIERS) IN THE CONCEALED SPACE ABOVE THE CEILINGS WHERE WORK INCLUDES ACCESS ABOVE CEILINGS. SEE CODE COMPLIANCE PLAN FOR WALL TYPES. SEE SPECIFICATION SECTION 07 0533 FIRE AND SMOKE IDENTIFICATION. SIGN SHALL BE LOCATED WITHIN 15 FT OF THE END OF EACH WALL NOT TO EXCEED 30' O.C. AND AT INTERVALS NOT EXCEEDING 30 FT MEASURED HORIZONTALLY. LETTERING SHALL NOT BE LESS THAN 3 INCHES IN HEIGHT WITH CONTRASTING COLORS.
  - 
  -



## 3 WALL RATING SIGN

SCALE: 1 1/2" = 1'-0"

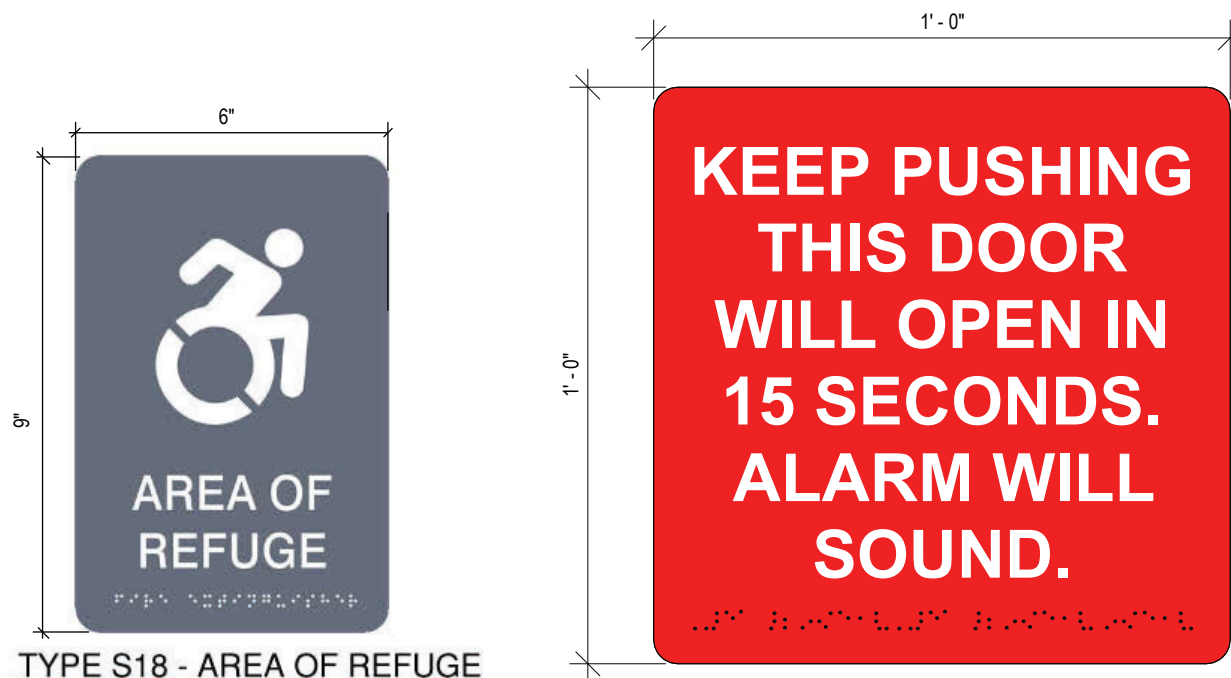


## 4 SIGNAGE - PROJECT SIGN

SCALE: 3/4" = 1'-0"

## 1 SIGN TYPES

SCALE: 3" = 1'-0"



TYPE S14 - DOOR ALARM



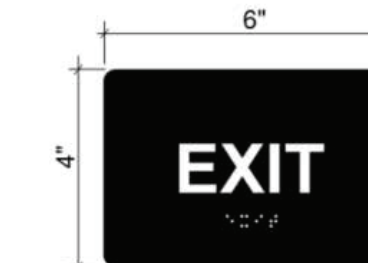
TYPE S19 - PUSH FOR HELP



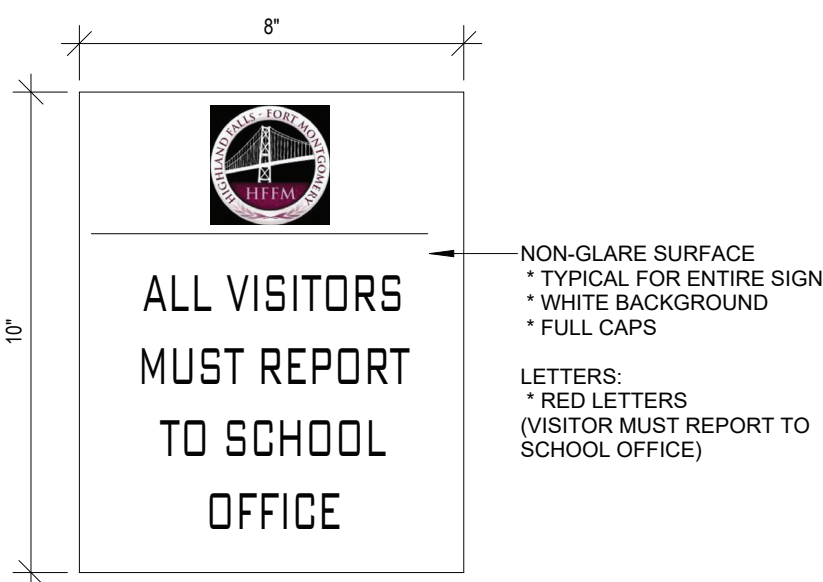
TYPE S15 - DO NOT USE ELEVATOR



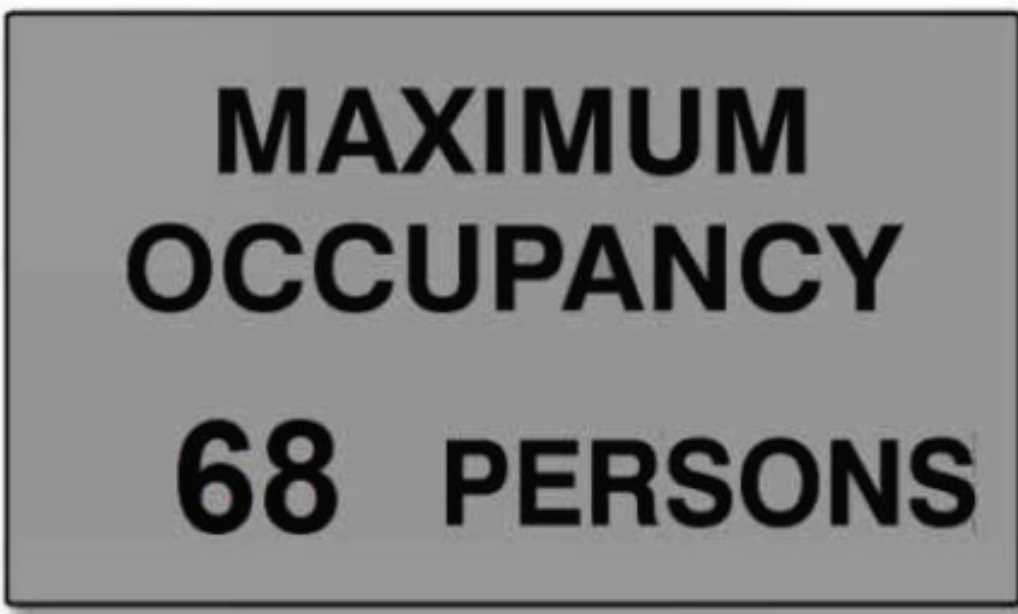
TYPE S16 - DRINKING FOUNTAIN



TYPE S17 - EXIT

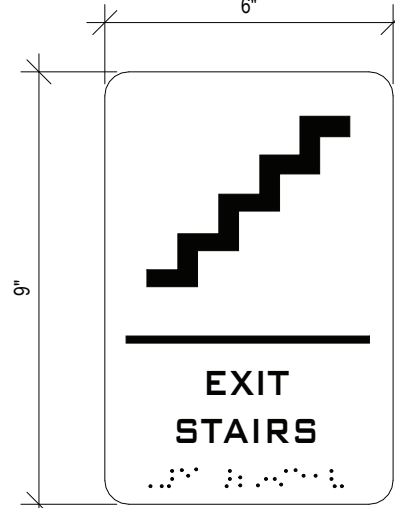


TYPE S12 - SCHOOL VISITORS



TYPE S13 - OCCUPANCY SIGN

Brushed aluminum - No Braille



TYPE S7 - EXIT STAIR



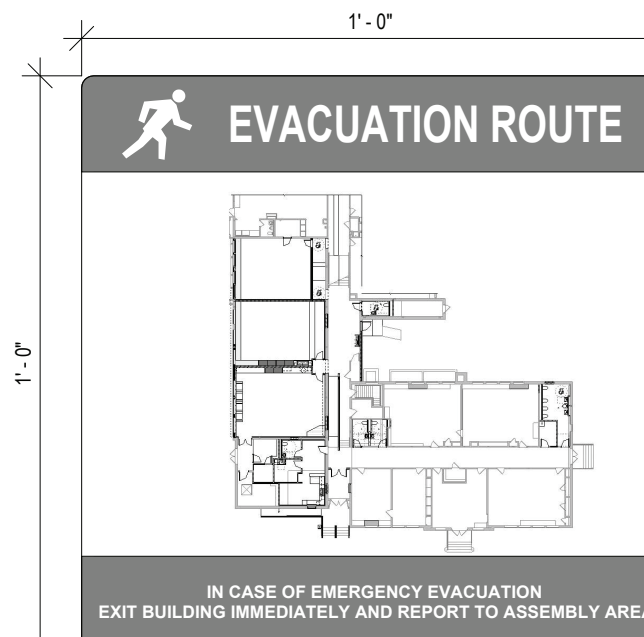
TYPE S8 - ACCESSIBLE EXIT



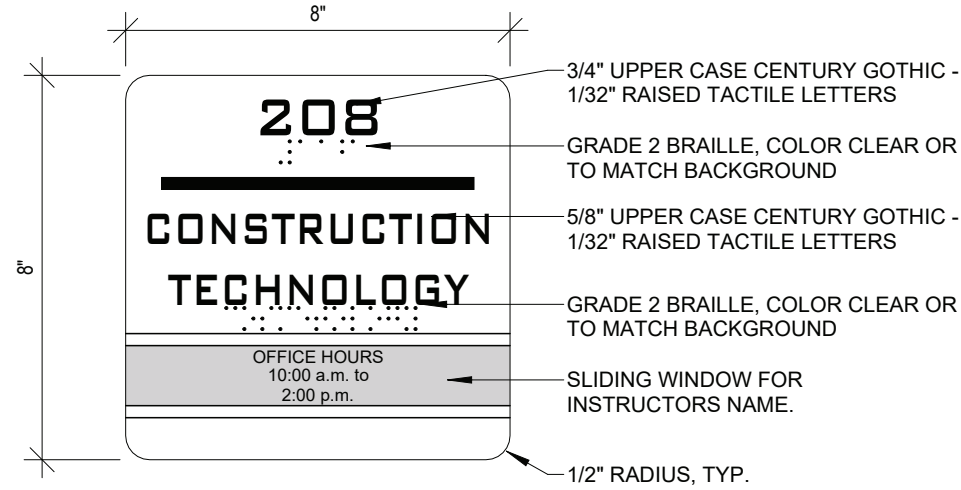
TYPE S9 - ACCESSIBLE EXIT



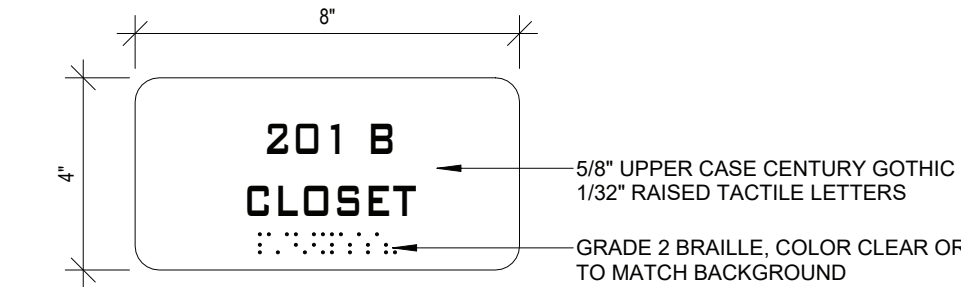
TYPE S10 - ACCESSIBLE ENTRANCE



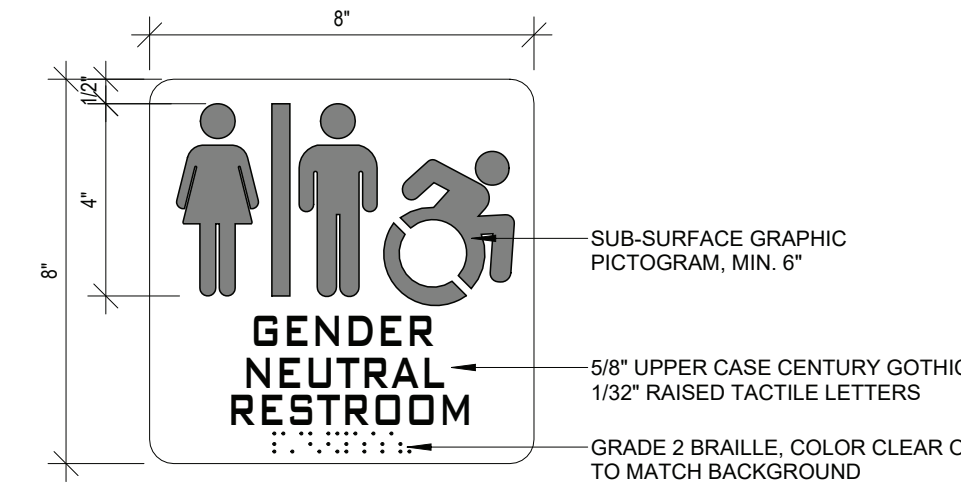
TYPE S11 - EMERGENCY EVACUATION ROUTE



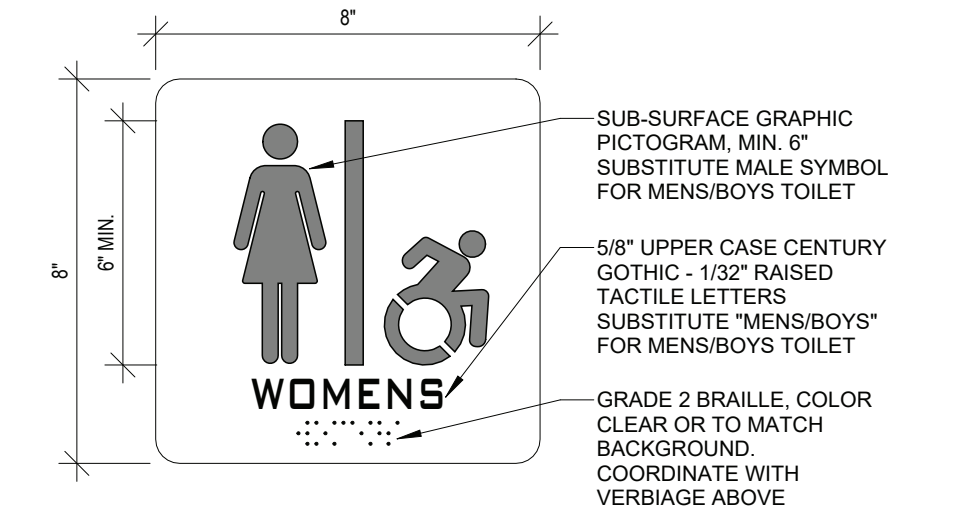
TYPE S1 - TYPICAL CLASSROOM OR OFFICE



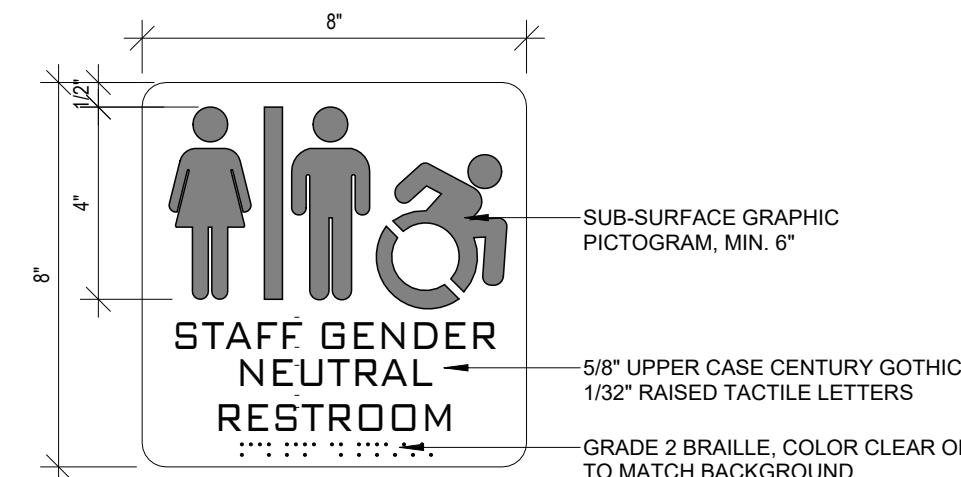
TYPE S2 - CLOSET/STORAGE



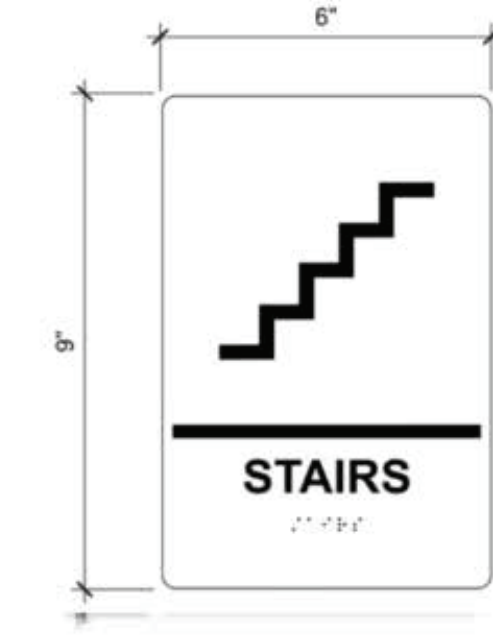
TYPE S3 - GENDER NEUTRAL RESTROOM



TYPE S4 - WOMENS, MENS, BOYS OR GIRLS TOILET



TYPE S5 - STAFF GENDER NEUTRAL RESTROOM



TYPE S6 - STAIRS

## SIGN TYPES KEY

TYPE	DESCRIPTION
S1	TYPICAL CLASSROOM OR OFFICE
S2	CLOSET, STORAGE, ELECTRICAL ROOM, ETC.
S3	GENDER NEUTRAL RESTROOM
S4	WOMENS, MENS, BOYS OR GIRLS
S5	STAFF GENDER NEUTRAL RESTROOM
S6	STAIRS
S7	EXIT STAIR
S8	ACCESSIBLE LIFT
S9	ACCESSIBLE EXIT
S10	ACCESSIBLE ENTRANCE
S11	EMERGENCY EVACUATION ROUTE
S12	SCHOOL VISITORS NOTICE
S13	MAXIMUM OCCUPANCY
S14	DOOR ALARM
S15	DO NOT USE ELEVATOR IN CASE OF FIRE
S16	DRINKING FOUNTAIN
S17	EXIT
S18	AREA OF REFUGE
S19	PUSH FOR HELP

KEY PLAN:

SED NO. 44-09-01-04-0-005-008

THIS SHEET INCORPORATES COLOR GRAPHICS WHICH INDICATE IMPORTANT INFORMATION AND SHALL BE PRINTED IN COLOR IF REPRODUCED BY A CONTRACTOR.

**BCA Architects & Engineers**  
Watertown | Ithaca | Saratoga Springs | Rochester  
WWW.THEBCGROUP.COM  
COPYRIGHT © 2022 - BCA ARCHITECTS & ENGINEERS. WARNING - IT IS A VIOLATION OF THE NEW YORK STATE EDUCATION LAW FOR ANY UNAUTHORIZED ALTERATIONS TO THIS DOCUMENT AS PER ARTICLE 145 AND 147.



HIGHLAND FALLS-FORT MONTGOMERY CSD  
ALTERATIONS AND ADDITIONS TO:  
FORT MONTGOMERY ELEMENTARY SCHOOL  
HIGHLAND FALLS - ORANGE COUNTY - NEW YORK

REV	DATE	DESCRIPTION
2	07/12/2024	BID ADDENDUM #2
DRAWN BY	LEW	PROJECT NUMBER 2022-138 PH1
CHECKED BY	BUL	DATE 07/12/2024

## SIGNAGE TYPES

BUILDING NUMBER	SHEET NUMBER
ES	A922



