

# ADDENDUM 01

The attention of bidders submitting proposals for the subject project noted above is called to the following Addendum to the Contract Forms and Specifications.

The items set forth herein, whether of omission, addition, substitution or clarification are to be included in and form a part of the proposal submitted.

This Addendum consists of the following information:

Part 1	Division #0, Bidding and Contract Requirements	
Part 2	Technical Changes, Architectural, Structural and Civil.....	
Part 3	Technical Changes, Mechanical, Electrical and Plumbing .....	
Part 4	Drawing Changes, Architectural and Civil.....	
Part 5	Drawing Changes, Structural.....	
Part 6	Drawing Changes, Mechanical, Electrical and Plumbing.....	NOT USED
Part 7	Clarifications	
Part 8	New Issues – List of Included Documents	

---

**Part 1**                      Bidding and Contract Requirements

- 1. DEADLINE TO RECEIVE ALL BIDS FOR ALL CONTRACTS SHALL BE EXTENDED UNTIL TUESDAY, JULY 16<sup>TH</sup> AT 1:00 PM.**
- 2. ACCEPTANCE OF RFI'S WILL ALSO BE EXTENDED TO TUESDAY JULY 9<sup>TH</sup> AT 1:00PM**

---

**Part 2**                      Technical Changes, Architectural, Structural and Civil

- Section 011000 Summary.
  - Section 1.6 Work by Owner, C. Work To be performed by owner, add,  
*"9. Relocation of Condensing Units and all associated work, including electrical, shall be by owner. New Heat pumps, ductless splits, and all associated mechanical work, shall also be by owner. Contractor shall provide electrical power and final connection to new owner installed equipment. See Mechanical & Electrical drawings for more information."*
- Add Section 044100 - Stone Masonry Veneer

---

**Part 3**                      Technical Changes, Mechanical, Electrical and Plumbing

- Section 220300 Plumbing Fixtures and Equipment
  - Part 2 Products, 2.1 Plumbing Fixtures and Equipment, B. The letter designations hereinafter correspond with the schedule on the Drawings, add,  
*"11. Water coolers – TYPE C Elkay EZSTL8LC Refrigerated Drinking Fountain, Versatile Wall Mount Bi-Level, 8.0 GPH Water Cooler, ADA, Push bar Controls on Front and Sides, Non-Filtered, Light Gray Granite."*

---

**Part 4**                      Drawing Changes, Architectural and Civil

- Add Sketch ASK-01 – Retaining Wall Details
- Drawing A200 – Ground Floor Plan (Lower Level) – add to Finish Schedule,  
*"004 'Boiler Room'.*
  - Walls - CMU/Conc., PTD*
  - Floor - EPO*
  - Ceiling – OTS, PTD"*

3. Replace Drawing A901 - Typical Door & Window Types.

---

**Part 5** Drawing Changes, Structural

---

1. Add Sketch SSK-01 – Section – Concrete Retaining Wall
2. Add Sketch SSK-02 – Section – Concrete Retaining Wall

---

**Part 7** Clarifications

---

1. Hazmat work within the alternate area shown on A200 is to be bid as part of the alternate.
2. Falsework (or overbuild) roof package will not include 3" x 6" timber decking and will be constructed as shown in detail's R1-R4/A202 & S312
3. No access is required for the space under the Falsework. No lighting, smoke detection or access is needed.
4. The 2" seismic joint is not to continue through the roof rafters & knee walls. The expansion joint can stop under the falsework at the new CMU wall below.
5. The 2x4 Knee Walls do not require sheathing. If a knee wall exceeds 6'-0" in height, it will require bracing nailed to each stud at mid-height. Drawing S103 shows four knee walls and specification section 061053 calls for miscellaneous lumber for support of wood construction members, of which this falls under.
6. Fire Stopping at existing walls and floors is only required when impacted by new work.
7. Doors and openings not listed on the door schedule are to remain 'as is' (no work).
8. Rooms not listed on the finish schedule are to remain 'as is', miscellaneous cutting and patching notwithstanding (no work).
9. All toilet accessories required are shown on A905. No other accessories are needed.
10. CT/CTB Refers to the quarry tile.

---

**Part 8** New Issues – List of Included Documents

---

044100 Stone Masonry Veneer	5 pages
SSK-01 Section	1 page
SSK-02 Section	1 page
ASK-01 Retaining Wall Details	1 page
A901 Typical Window & Door Types	1 sheet

End of Addendum

## SECTION 044100 - STONE MASONRY VENEER

### PART 1 - GENERAL

#### 1.1 SUMMARY

- A. This Section includes:
  - 1. Thin stone veneer facing concrete site walls.
  - 2. Mortar (adhesive) and pointing mortar for thin stone veneer.
- B. Mortar, grout, anchors, flashing, and miscellaneous masonry accessories for stone veneer are specified in Division 04 Section "Unit Masonry Assemblies."

#### 1.2 SUBMITTALS

- A. Product Data: For setting and pointing mortars.
- B. Qualification Data: For firms and persons specified in "Quality Assurance" Article
- C. Samples for Initial Selection: For the following:
  - 1. Colored mortar samples in small-scale form showing the full range of colors and textures available for each different exposed mortar color required.
- D. Samples for Verification: For the following:
  - 1. Full-size units for each color, grade, finish, and variety of stone required, showing the full range of exposed colors, textures, and dimensions to be expected in the completed construction.
  - 2. Colored mortar samples, for each mortar color required, showing the full range expected in the finished construction.

#### 1.3 QUALITY ASSURANCE

- A. Source Limitations for Stone: Obtain all stone for each variety of stone from single source with resources to provide materials of consistent quality in appearance and physical properties without delaying the work.
- B. Source Limitations for Mortar Materials: Obtain mortar ingredients of a uniform quality, including color for exposed masonry, from one manufacturer.

- C. Single Source Responsibility for Installation of Stone Masonry Veneer Work: All stone masonry veneer work, including installation of associated cast stone trim, shall be performed by a single firm meeting qualifications specified in this section.
- D. Installer Qualifications for Stone Masonry Veneer Work: Work must be performed by a firm having not less than five (5) years successful experience in comparable stone masonry veneer work including work on at least three (3) buildings in the last five years and employing personnel skilled in the installation processes and operations indicated.
  - 1. Only skilled journeymen masons who are thoroughly trained and experienced in performing stone masonry veneer work including field trimming and installing and the skills required, and completely familiar with the materials and methods required shall be used for the work.
  - 2. One skilled journeyman mason shall be present at all times during execution of the work and shall personally direct the work.
  - 3. In acceptance or rejection of stone masonry veneer work, no allowance will be made for lack of skill on the part of the workmen
- E. Mockups: Before installing stone masonry veneer work, build mockups to verify selections made under sample submittals and to demonstrate aesthetic effects and qualities of materials and execution. Final approval of exposed mortar color and texture, and stone bonding (pattern) will be made based on acceptance of mock-up. Build mockups to comply with the following requirements, using materials indicated for the completed Work:
  - 1. Locate mockup in place on building exterior wall in the locations as directed by Architect.
  - 2. Build a single mockup of stone veneer on solid backing (CMU, concrete or metal studs and gypsum sheathing as selected by Architect) approximately 96 inches long by 48 inches high by full thickness, including all accessories and cast stone trim unit. Include a sealant-filled joint at least 16 inches (400 mm) long in the mockup.
  - 3. Reprepare mock-ups until Architect has approved mock-up.
  - 4. Protect accepted mockups from the elements with weather-resistant membrane.
  - 5. Approval of mockups does not constitute approval of deviations from the Contract Documents contained in mockups unless Architect specifically approves such deviations in writing.
  - 6. Approved mock-up in undamaged condition may be incorporated in the Work.
- F. Vertical and Lateral Fire Propagation Test Characteristics: The exterior wall assembly of the School Building is required to comply with NFPA 285 "Standard Method of Test for the Evaluation of Flammability Characteristics of Exterior Nonload-bearing Wall Assemblies Containing Combustible Components." The base wall, stud cavity insulation, wall sheathing, air barrier, continuous wall rigid insulation and exterior cladding are components that are required to be to be evaluated as part of this specific assembly test. All stone veneer components shall be part of an assembly that has passed NFPA 285 testing.

#### 1.4 DELIVERY, STORAGE, AND HANDLING

- A. Store and handle stone, mortar and related materials to prevent deterioration or damage

due to moisture, temperature changes, contaminants, corrosion, breaking, chipping, or other causes.

## 1.5 PROJECT CONDITIONS

- A. Hot-Weather and Cold-Weather Requirements: Comply with requirements contained in Section 042000.

## PART 2 - PRODUCTS

### 2.1 STONE SOURCES

- A. Varieties and Sources for Thin Stone Veneer: Provide Stonewood Products, Fieldstone Square & Rectangle – Thin Stone Veneer, or equivalent approved by architect. Cap with Stonewood Bluestone Tread
  - 1. Stone Depth: 1"-2" +/-
  - 2. Stone Facing Area: 4"-8" Wide by 4"-8" Length
  - 3. Stone Shape: Roughly Squared/Rectangular.
  - 4. Finish: Natural face
  - 5. Provide 90-degree corners.
  - 6. Stone Cap to be 14" Deep by 24" Long

### 2.2 MORTAR AND GROUT MATERIALS FOR THIN STONE VENEER

- A. Setting Mortar: Multi-use, polymer fortified adhesive mortar formulated for wall installations of interior and exterior thin brick, masonry veneer, stone, and tile. Non-sag performance, "Extra Heavy" rating per ASTM C627 (TCNA), and meets or exceeds ANSI A118.4, A118.11 and A118.15 requirements.
  - 1. Basis of Design Product: Provide Laticrete MVIS Thin Brick Mortar or equal.
- B. Pointing Mortar: Formulated from a blend of high strength portland cement, graded aggregates, and color-fast pigments, factory prepared and designed to be mixed with

water. Designed for adhered stone, thin brick and manufactured masonry veneers

1. Basis of Design Product: Provide Laticrete MVIS Pointing Mortar, or equal.
2. Color: Grey, Product No. 9330-0050-21

### 2.3 MASONRY CLEANERS

- A. Job-Mixed Detergent Solution: Solution of 1/2-cup (0.14-L) dry-measure tetrasodium polyphosphate and 1/2-cup (0.14-L) dry-measure laundry detergent dissolved in 1 gal. (4 L) of water.

## PART 3 - EXECUTION

### 3.1 EXAMINATION

- A. Examine surfaces to receive stonework and conditions under which stone work will be installed, with Installer present, for compliance with requirements for installation tolerances and other conditions affecting performance.
  1. For the record, prepare a written report, endorsed by Installer, listing conditions detrimental to performance of the work.
  2. Proceed with installation only after unsatisfactory conditions have been corrected.

### 3.2 PREPARATION

- A. Clean dirty or stained stone surfaces by removing soil, stains, and foreign materials before setting. Clean stone by thoroughly scrubbing with fiber brushes and then drenching with clear water. Use only mild cleaning compounds that contain no caustic or harsh materials or abrasives.

### 3.3 INSTALLATION OF ADHERED STONE VENEER ASSEMBLIES

- A. Mix mortar materials in accordance with manufacturer's directions.
- B. For adhered masonry veneers use a gauging trowel to apply a thin coat of mortar to cover entire back of the veneer unit. Spread additional mortar onto the back of the skim coated veneer unit sufficient to completely fill the space between the veneer unit and the substrate when compressed against the substrate. Press the mortar covered back of the veneer against the substrate at the desired final position. Slide the unit roughly 1" diagonally from the desired final position and back into the desired position while maintaining even pressure. This should be done in such a manner as to squeeze the mortar to fill the entire space between the veneer unit and the substrate, helping to achieve 100% coverage to both the substrate and veneer unit, allowing excess mortar to extrude on all sides around the veneer unit. Clean excess extruded mortar with trowel and spread onto the next veneer unit to be installed.
- C. Maintain uniform joint widths.

- D. Point masonry veneer after appropriate curing time using pointing mortar in accordance with manufacturer's directions.

### 3.4 INSTALLATION TOLERANCES

- A. Refer to Section 042000.

### 3.5 ADJUSTING AND CLEANING

- A. Remove and replace stone veneer assemblies of the following description:
  - 1. Broken, chipped, stained, or otherwise damaged stone. Stone may be repaired if methods and results are approved by Architect.
  - 2. Defective joints.
  - 3. Thin Stone veneer assemblies not matching approved samples and mockups.
  - 4. Thin Stone veneer assemblies not complying with other requirements indicated.
- B. Replace in a manner that results in stone veneer assemblies matching approved samples and mockups, complying with other requirements, and showing no evidence of replacement.
- C. In-Progress Cleaning: Clean stone as work progresses. Remove mortar fins and smears before tooling joints.
- D. Clean stone after pointing mortar and sealant has had opportunity to cure, using clean water and stiff-bristle fiber brushes. Do not use wire brushes, acid-type cleaning agents, cleaning agents containing caustic compounds or abrasives, or other materials or methods that could damage stone.

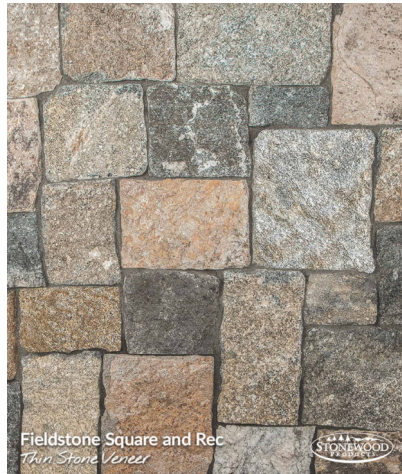
### 3.6 PROTECTION

- A. Protection: Provide final protection in a manner acceptable to Architect that ensures cut stone work is without damage and deterioration at the time of final acceptance.

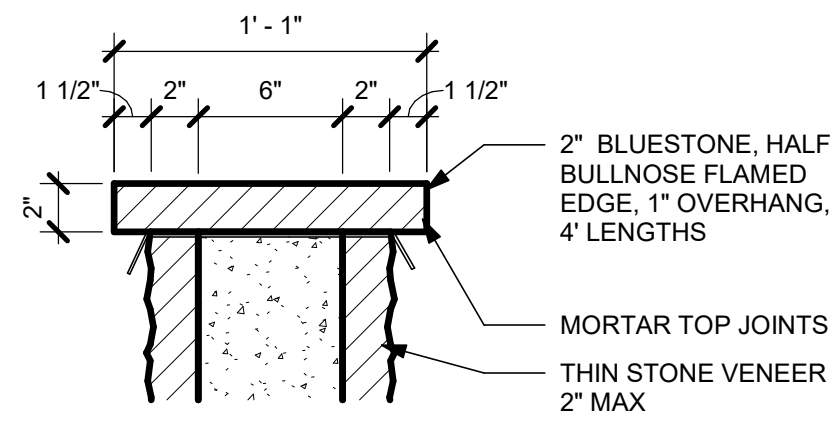
END OF SECTION 044100



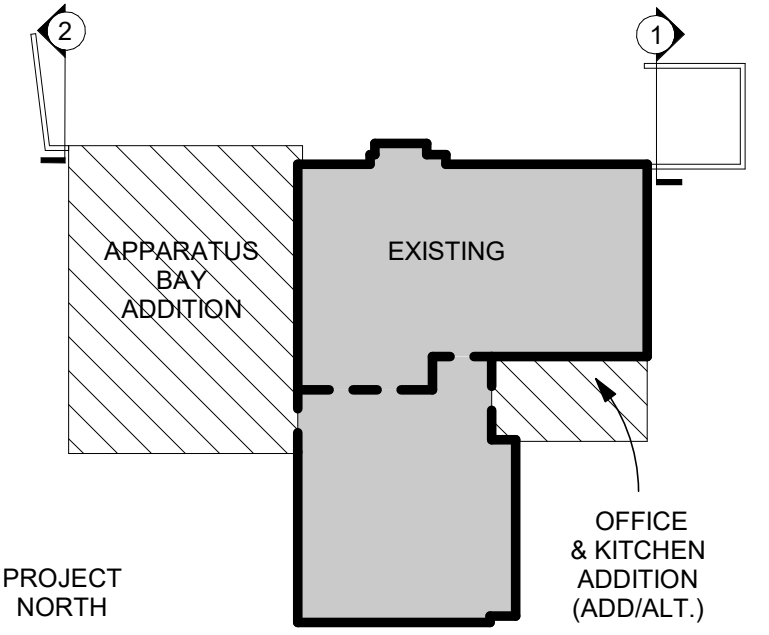




4 THIN STONE VENEER

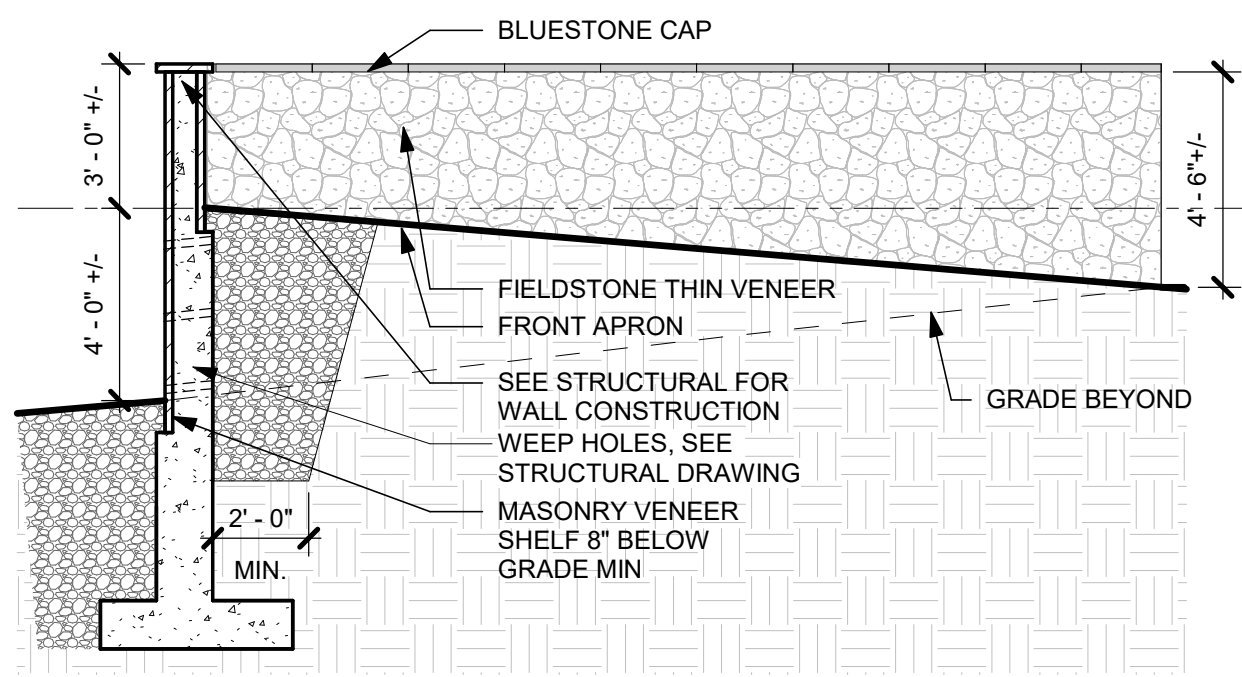


3 RETAINING WALL CAP DETAIL

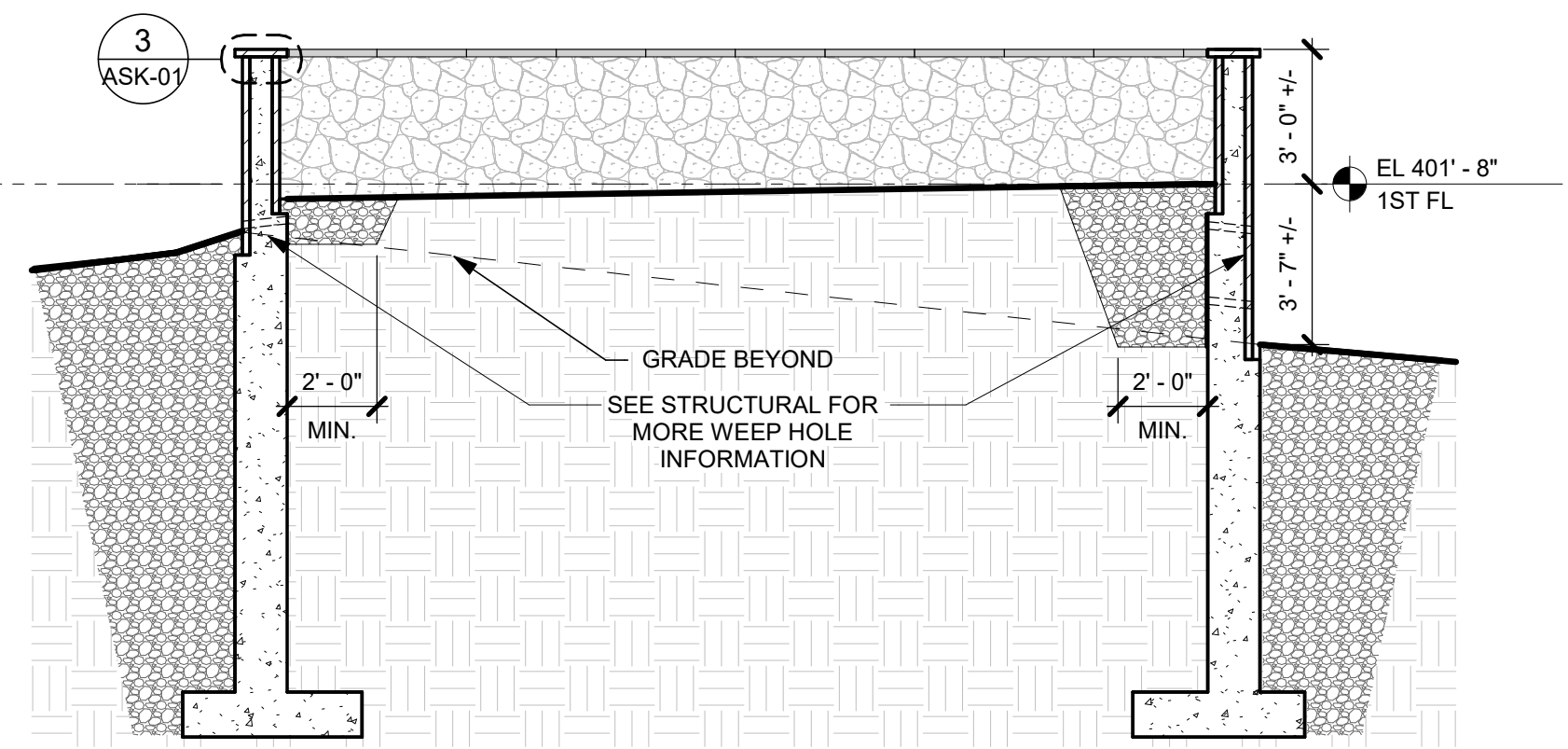


PROJECT NORTH

KEY PLAN



2 CONCRETE RETAINING WALL



1 PARKING AREA RETAINING WALL



# FIREHOUSE ADDITIONS & ALTERATIONS

POUND RIDGE VOLUNTEER FIRE DEPARTMENT CONSTRUCTION DOCUMENTS

Project Issue Date: JUNE 11, 2024

Sheet Title

## RETAINING WALL DETAILS

S.E.D. Control No.

Job No.  
2023-1005

Date  
6/24/2024

Scale  
As indicated

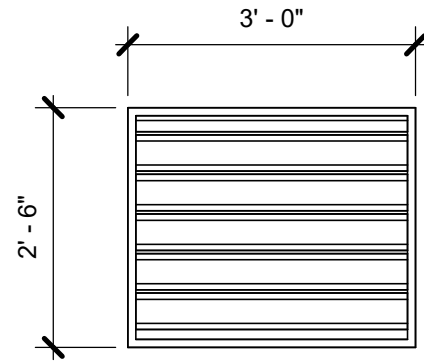
Drawn / Checked  
TC/WH

Sheet No.

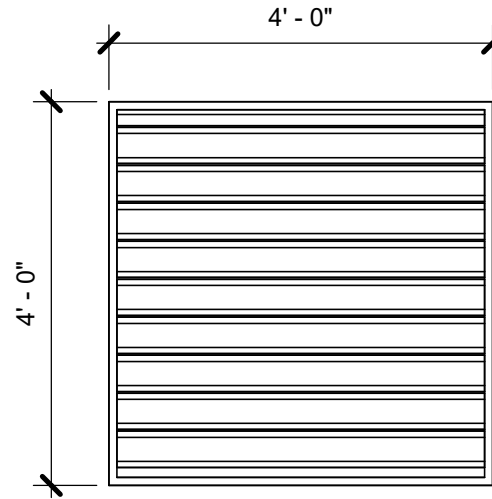
# ASK-01

GLAZING LEGEND & TYPES			
INTERIOR			
KEY	TYPES	USE	DESCRIPTION / BASIS-OF-DESIGN
	WHERE NO TYPE IS INDICATED	GENERAL	CLEAR FLOAT GLASS - SAFETY GLASS WHERE NOTED &/OR SPECIFIED
	FP-RATING		CLEAR LAMINATED CERAMIC GLASS - MEETS FIRE DOOR CRITERIA & HOSE STREAM TEST PER NFPA 252 (FIRELITE PLUS PREMIUM)
EXTERIOR			
KEY	TYPES	USE	DESCRIPTION / BASIS-OF-DESIGN
	IGV	GENERAL	INSULATED CLEAR ANNEALED GLASS w/ LOW-E (SOLARBAN 70) - USE HEAT-STRENGTHENED LAMINATED, &/OR TEMPERED AS NOTED &/OR SPECIFIED
	IGV-1	SPANDREL	INSULATED CLEAR HEAT-STRENGTHENED GLASS w/ LOW-E (SOLARBAN 70) & SPANDREL COATING AS SPECIFIED

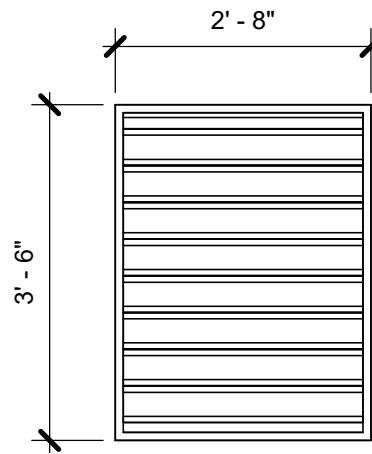
\*ALL EXTERIOR LOUVERS SHALL BE 4" DEEP ALUM. HORIZONTAL BLADE, STORM-PROOF, DRAINABLE, w/ 50% FREE AREA (MIN) IN PREMIUM (KYNAR) METALLIC (OR CUSTOM) COLOR SELECTED BY ARCHITECT, w/ BIRD SCREEN (SIM TO RUSKIN ELF375DX)\*



**L3** LOUVER - L3  
1/4" = 1'-0"



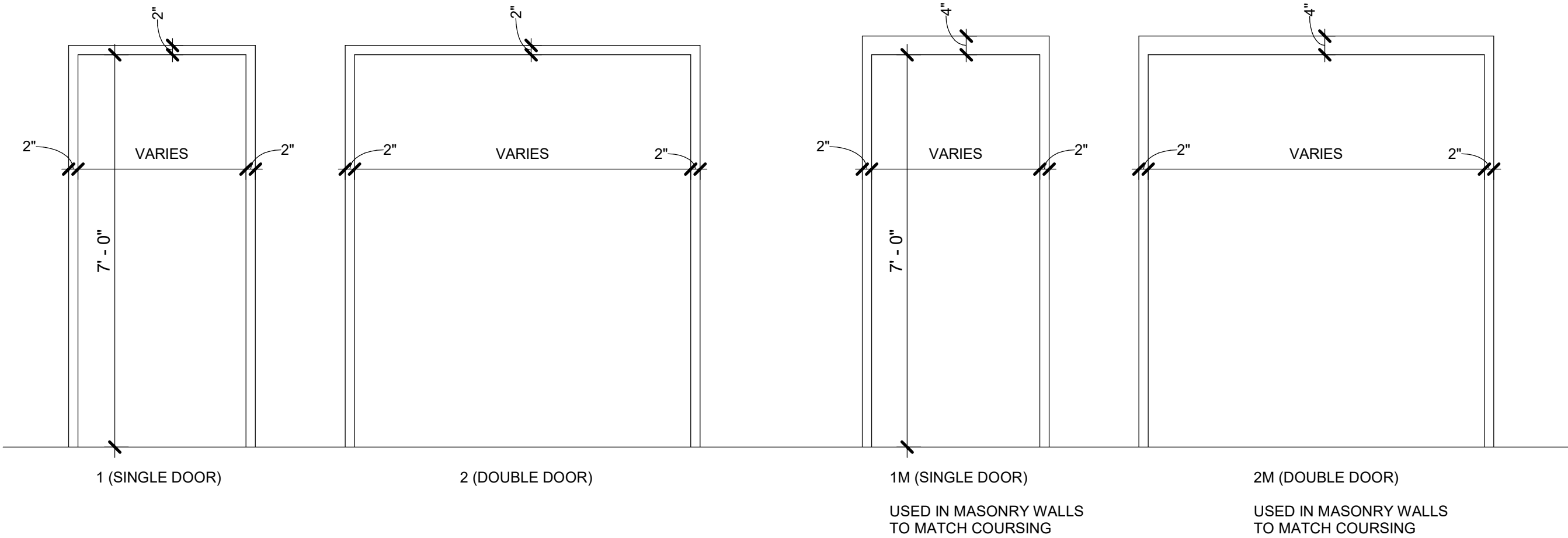
**L2** LOUVER - L2  
1/4" = 1'-0"



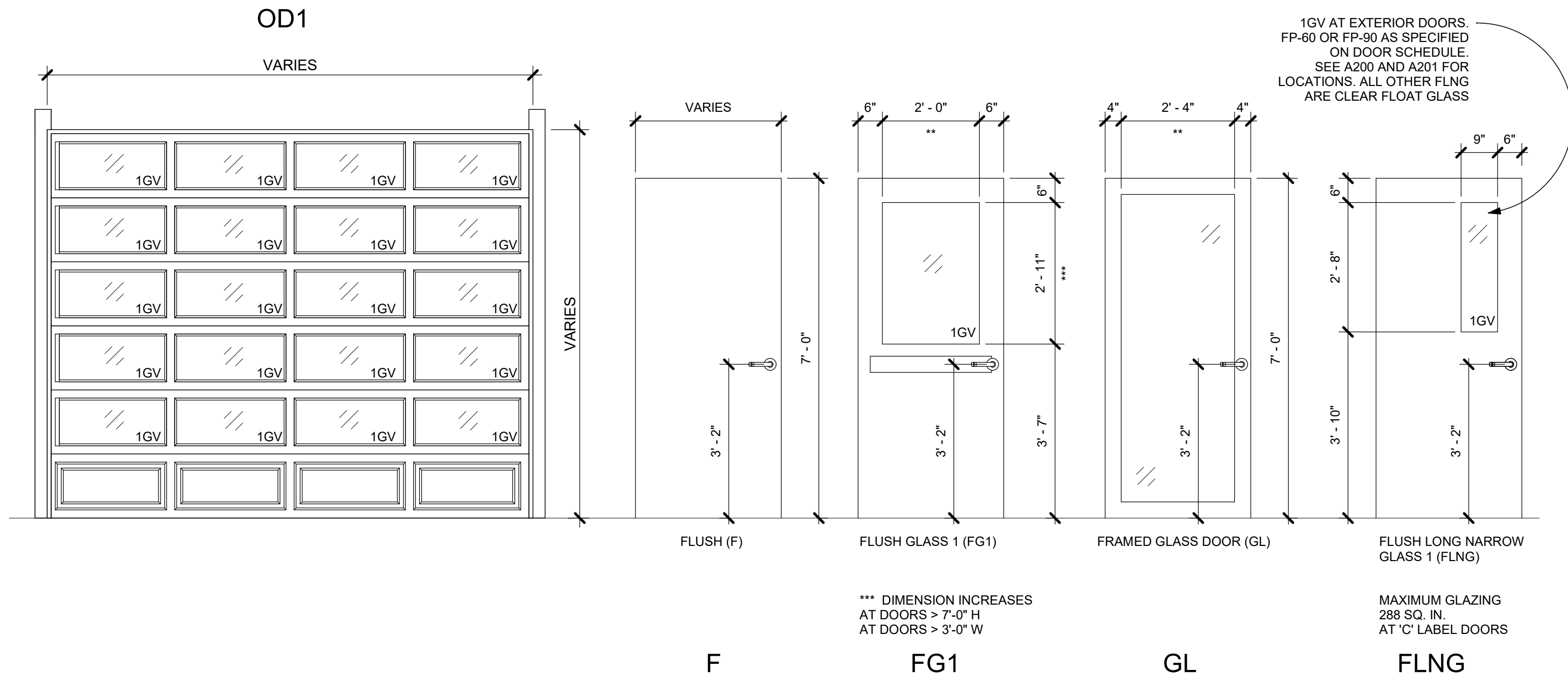
**L1** LOUVER - L1  
1/4" = 1'-0"

CHART OF DOOR RATINGS & UL LABEL			
UL LABEL	RATING	RATING	MAX GLASS AREA
B	1 1/2 HR	90 MIN	100 SQ INCHES PER LEAF
C	3/4 HR	45 MIN	1296 SQ INCHES PER LEAF
S	SMOKE	SMOKE	

NOTE:  
GLAZING AND GLASS SIZES FOR INTERIOR DOORS AND WINDOWS ARE TO COMPLY WITH NFPA 80 OR ASTM E119 - TYP.



FRAME TYPES



## FIREHOUSE ADDITIONS & ALTERATIONS



Pound Ridge Fire Department  
Pound Ridge, New York

**KG+D** listen  
imagine  
build  
**KG+D ARCHITECTS PC**  
285 MAIN STREET MOUNT KISCO . NEW YORK . 10549  
P:914.666.5900 KGDARCHITECTS.COM

### CONSTRUCTION DOCUMENTS

NOTE: ALL IDEAS, DESIGNS, ARRANGEMENTS AND PLANS INDICATED OR REPRESENTED BY THIS DRAWING ARE OWNED BY AND ARE THE PROPERTY OF KG+D ARCHITECTS, PC (KG+D), AND WERE CREATED FOR USE ON THIS PROJECT. NONE OF SUCH IDEAS, DESIGNS, ARRANGEMENTS OR PLANS SHALL BE USED BY OR DISCLOSED TO ANY PURPOSE WHATSOEVER WITHOUT THE WRITTEN PERMISSION OF KG+D.

WRITTEN DIMENSIONS ON THIS DRAWING SHALL HAVE PRECEDENCE OVER SCALED DIMENSIONS. CONTRACTOR SHALL VERIFY ALL ACTUAL DIMENSIONS AND CONDITIONS ON THE JOB AND THE ARCHITECT MUST BE NOTIFIED OF ANY VARIATIONS FROM DIMENSIONS AND CONDITIONS SHOWN. SHOP DETAILS MUST BE SUBMITTED TO THIS OFFICE FOR APPROVAL BEFORE PROCEEDING WITH FABRICATION.

ALTERATIONS BY ANY PERSON, IN ANY WAY, OF ANY ITEM CONTAINED ON THIS DOCUMENT, UNLESS ACTING UNDER THE DIRECTION OF THE LICENSED ARCHITECT WHOSE PROFESSIONAL SEAL IS AFFIXED HERETO, IS A VIOLATION OF TITLE VII SECT. 49.5 (b) OF NEW YORK STATE LAW.  
© COPYRIGHT KG+D ARCHITECTS, PC.  
ALL RIGHTS RESERVED.

Professional Seal

7	06-24-2024	ADDENDUM 01
6	06-11-2024	CONSTRUCTION DOCUMENTS
5	04-26-2024	ICC REVISION 2
4	03-18-2024	ICC REVISION 1
3	02-02-2024	ISSUED TO ICC
2	11-03-2023	DESIGN DEVELOPMENT
1	07-29-2023	SCHEMATIC DESIGN
No.	Date	Issue

## TYPICAL DOOR & WINDOW TYPES

Job No.	2023-1005	Date	06/11/24
Scale	AS NOTED	Drawn / Checked	TC/WH
Sheet Number			

A901