

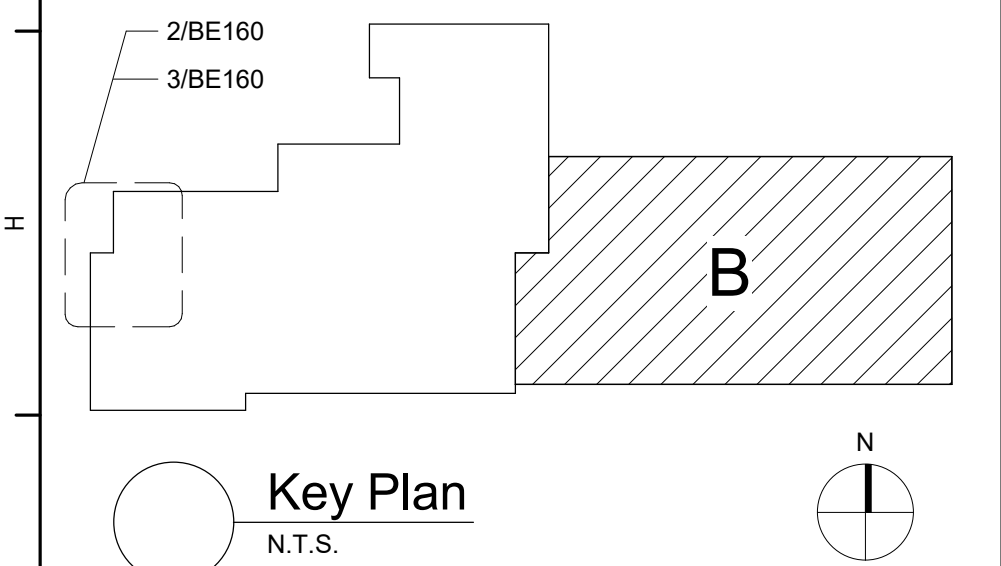


Keyed Notes:

- 1 PROVIDE 15A-2P CIRCUIT BREAKER IN AVAILABLE SPACE IN PANEL XX IN ROOM XX. CONNECT USING (2)#12, (1)#12G. IN 1/2" CONDUIT.
- 2 PROVIDE 20A-1P CIRCUIT BREAKER IN AVAILABLE SPACE IN PANEL XX IN ROOM XX. CONNECT USING (2)#12, (1)#12G. IN 1/2" CONDUIT.
- 3 PROVIDE FAN SHUTDOWN AND DUCT SMOKE DETECTOR. CONNECT TO EXISTING FIRE ALARM CIRCUITS. PROVIDE REQUIRED TESTING AND PROGRAMMING.
- 4 PROVIDE FAN SHUTDOWN AND CONNECT TO EXISTING FIRE ALARM CIRCUIT. PROVIDE REQUIRED TESTING AND PROGRAMMING.
- 5 REINSTALL WALL MOUNTED DEVICES AFTER CEILING REPLACEMENT. EXTEND / MODIFY CIRCUITRY AS NECESSARY. COORDINATE ALL WORK WITH GENERAL CONTRACTOR.

General Notes:

- A. REFER TO DRAWING AE050 FOR GENERAL NOTES
- B. REFER TO AE600 PANEL BOARD SCHEDULES FOR ADDITIONAL INFORMATION



S.E.D. Control No. 62-18-01-06-0-002-015

Rev. No.:	Date:	Description:



complex world | CLEAR SOLUTIONS

Tetra Tech Engineers, Architects & Landscape Architects, P.C.

BID SET



Wallkill Central School District
Wallkill, New York

Reconstruction to:
John G. Borden Middle School

Partial First & Second Floor Power
Plans - Areas A & B

Drawn By: Author	Date: 06/30/2023	Drawing Number:
Project No.: 17597-22002	BE160	