




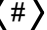



STRUCTURAL LEGEND

-  • INDICATES FOUNDATION TYPE MARK. REFERENCE THE FOUNDATION SCHEDULE.
-  • INDICATES FLOOR/ROOF STEP.
-  • INDICATES TOP FOUNDATION WALL STEP.
-  • INDICATES TOP FOOTING STEP.
-  • INDICATES STRUCTURAL WALL BELOW.
-  • INDICATES KEYED NOTE.
-  • INDICATES NEW GRIDLINE.

FOUNDATION PLAN NOTES

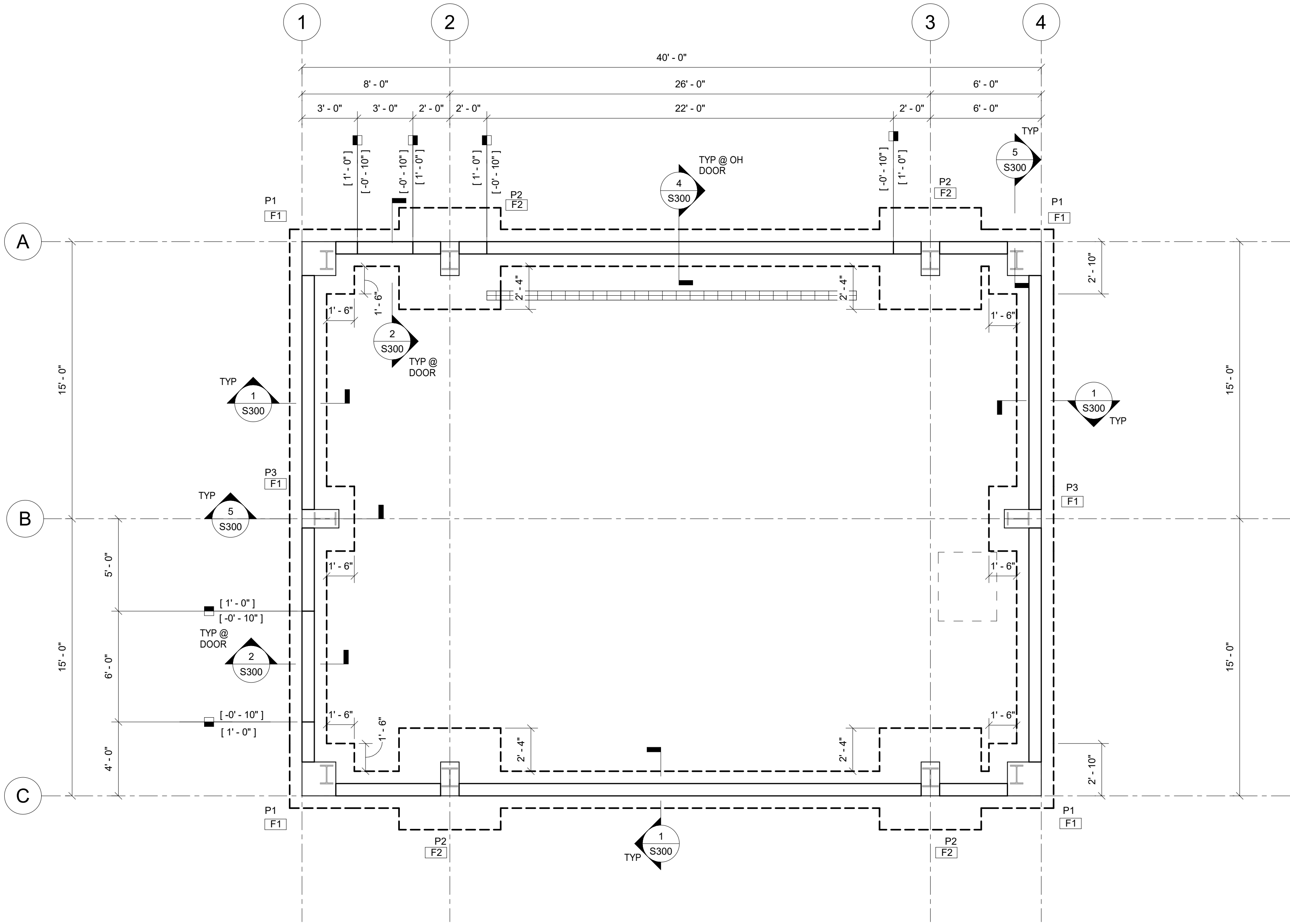
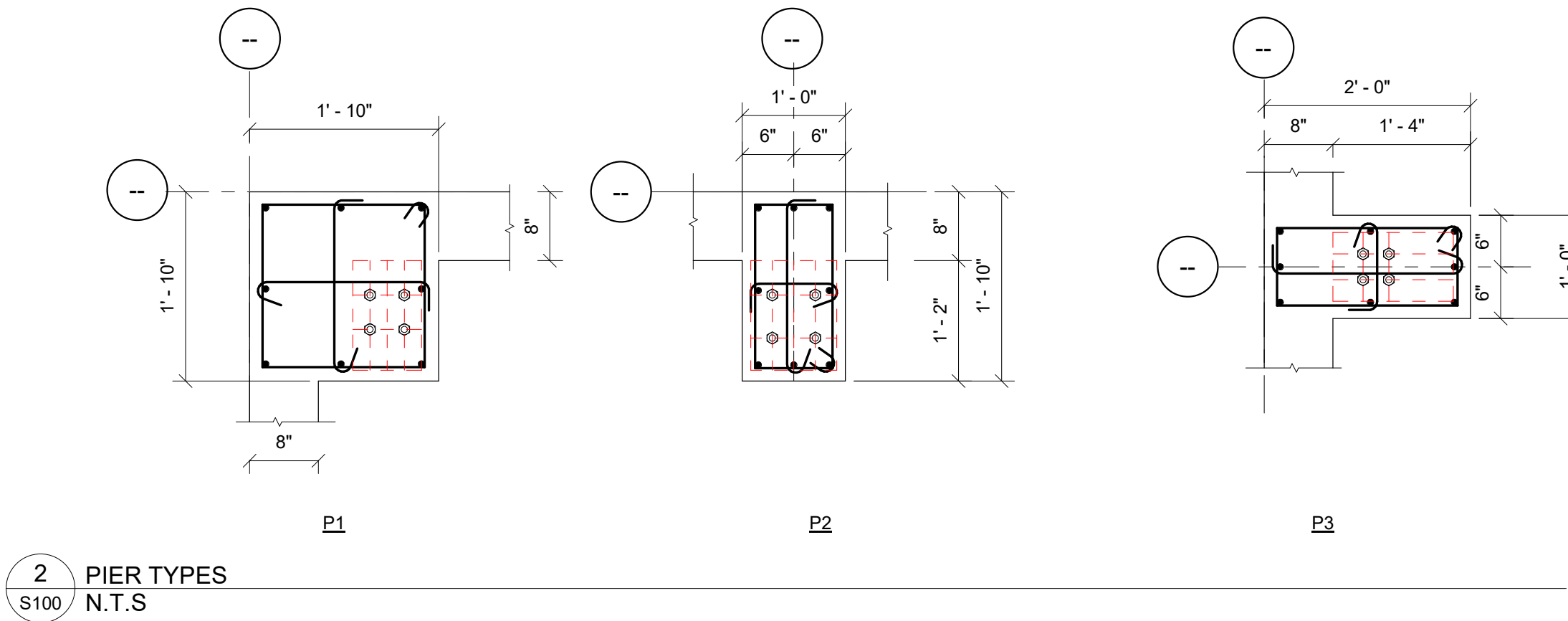
- ALL ELEVATIONS REFERENCED FROM 0'-0" = FF.
- VERIFY ALL DIMENSIONS WITH THE ARCHITECTURAL DRAWINGS AND METAL BUILDING DRAWINGS. GRIDLINES ARE LOCATED AT OUTSIDE FACE OF CONCRETE FOUNDATION WALLS AND CENTERLINE OF COLUMNS WHERE INDICATED.
- DETAILS ON THESE PLANS ARE INTENDED TO DEPICT THE GENERAL CONSTRUCTION METHOD FOR THIS STRUCTURE. CONNECTIONS, DETAILS AND CONDITIONS NOT SPECIFICALLY SHOWN THAT ARE SIMILAR TO THOSE THAT ARE SPECIFIED SHALL BE ASSUMED ONE AND THE SAME. IF QUESTIONS ARISE REGARDING THE APPLICATION OF DETAILS ARE ENCOUNTERED, NOTIFY THE STRUCTURAL ENGINEER OF RECORD FOR CLARIFICATION IN A TIMELY MANNER PRIOR TO BID OPENING.
- REFERENCE MEP DRAWINGS FOR ALL ELEVATIONS, PIPE PENETRATIONS, ETC. REFER TO STRUCTURAL DETAILS CORRESPONDING TO SPECIFIC ITEMS SUCH AS PIPE PENETRATIONS, OPENINGS, ETC.
- VERIFY SIZE AND LOCATION OF ALL SLAB AND WALL PENETRATIONS.
- ALL WALL FOOTINGS ARE WF1, UNLESS OTHERWISE NOTED. WALL FOOTINGS ARE CENTERED ON FOUNDATION WALLS.
- TOP OF FOOTING ELEVATION IS -3' - 0" UNLESS OTHERWISE NOTED.
- ALL STEM WALLS TO BE 8" THICK UNO ON PLAN. REINFORCEMENT TO BE #5@12" OC, EW, CENTER OF WALL.
- TOP OF FOUNDATION WALL ELEVATION IS 1'-0" UNLESS OTHERWISE NOTED.
- TOP OF PIER ELEVATION IS 0'-0" UNLESS OTHERWISE NOTED.
- FOOTINGS ARE CENTERED ON PIERS UNLESS OTHERWISE NOTED.

| WALL FOOTING SCHEDULE |         |           |                    |                 |
|-----------------------|---------|-----------|--------------------|-----------------|
| MARK                  | WIDTH   | THICKNESS | LONG. REINF.       | TRANS. REINF.   |
| WF1                   | 2' - 0" | 1' - 0"   | (3) #5, EQ SP, BTM | #5 @18" OC, BTM |

| FOOTING SCHEDULE |         |         |           |                    |                    |
|------------------|---------|---------|-----------|--------------------|--------------------|
| MARK             | LENGTH  | WIDTH   | THICKNESS | LONG. REINF.       | TRANS. REINF.      |
| F1               | 3' - 6" | 3' - 6" | 1' - 0"   | (4) #5, EQ SP, BTM | (4) #5, EQ SP, BTM |
| F2               | 5' - 6" | 5' - 6" | 1' - 0"   | (6) #5, EQ SP, BTM | (6) #5, EQ SP, BTM |

| PIER SCHEDULE |         |               |                             |  |
|---------------|---------|---------------|-----------------------------|--|
| MARK          | SIZE    | VERT REINF    | TIES                        |  |
| P2            | 12"x22" | (8) #5, EQ SP | 1 @2",1 @3", REMAINDER @10" |  |
| P3            | 12"x24  | (8) #5, EQ SP | 1 @2",1 @3", REMAINDER @10" |  |
| P1            | 22"x22" | (8) #5, EQ SP | 1 @2",1 @3", REMAINDER @10" |  |

KEYNOTES 



1 FOUNDATION PLAN  
S100 1/4" = 1'-0"

DATE: 01.23.24  
DRAWN BY: EK  
SCALE: As indicated  
REVIEWED BY: CAM  
PROJECT NO.: 22-2496  
FILE:

DELAWARE  
ENGINEERING, D.P.C.  
CIVIL AND ENVIRONMENTAL ENGINEERING  
28 MADISON AVENUE EXTENSION, ALBANY, NY 12203 - 518.452.1290  
55 SOUTH MAIN ST., ONEONTA, NY 13820 - 507.432.8073  
55 SOUTH MAIN ST., ONEONTA, NY 13820 - 507.432.8073  
55 SOUTH MAIN ST., ONEONTA, NY 13820 - 507.432.8073  
223 MAIN ST., GOSHEN, NY 10824 - 845.615.9322



| REVISIONS |             |
|-----------|-------------|
| NO.       | DESCRIPTION |
|           |             |
|           |             |
|           |             |
|           |             |
|           |             |
|           |             |
|           |             |
|           |             |
|           |             |

RHINEBECK WTP  
IMPROVEMENTS  
VILLAGE OF RHINEBECK  
DUTCHESS COUNTY, NY

FOUNDATION PLAN

SHEET:  
S100

WARNING - IT IS A VIOLATION OF NEW YORK EDUCATION LAW, SECTION 2209.2, FOR ANY PERSON UNLESS HE IS ACTING UNDER THE DIRECTION OF A LICENSED PROFESSIONAL ENGINEER OR LAND SURVEYOR, TO ALTER THIS DOCUMENT IN ANY WAY. IF ALTERED THE ALTERING PERSON SHALL COMPLY WITH THE REQUIREMENTS OF NEW YORK EDUCATION LAW, SECTION 2209.2.