

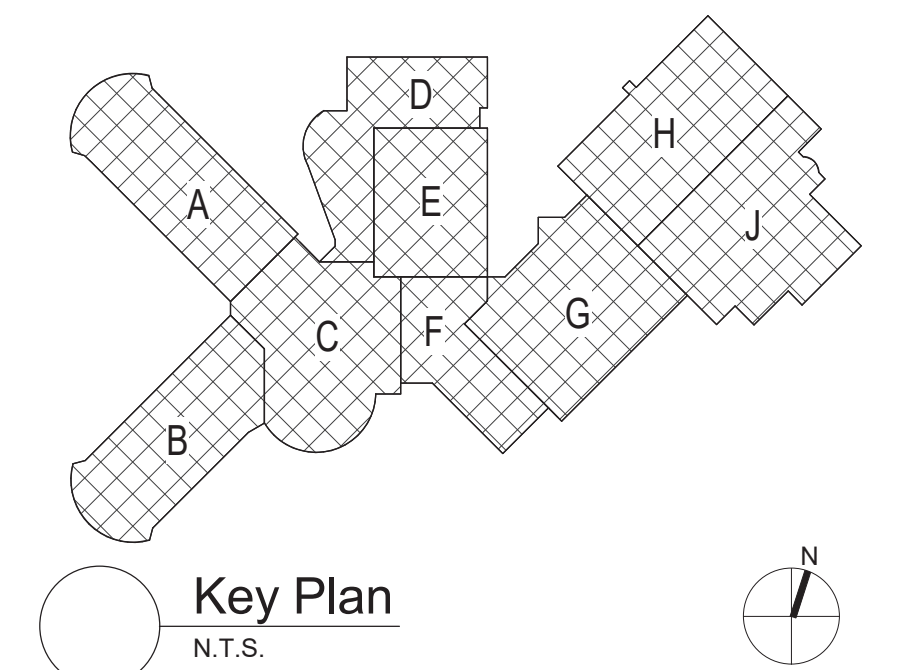
1 First Floor - Key Plan
3/64" = 1'-0"

Demolition General Notes

- A. ALL ELECTRICAL DEVICES INTERFERING WITH DEMOLITION WORK SHALL BE DISCONNECTED AND REMOVED, UNLESS OTHERWISE NOTED. EXISTING CIRCUIT WIRING SHALL BE REMOVED BACK TO SOURCE AND PANEL DIRECTORIES MODIFIED ACCORDINGLY.
- B. ANY DEVICE INTERFERING WITH DEMOLITION WORK NOT SHOWN ON THESE DRAWINGS SHALL NOT BE REMOVED WITHOUT WRITTEN AUTHORIZATION FROM THE OWNER'S REPRESENTATIVE OR THE ENGINEER.
- C. ALL ELECTRICAL DEMOLITION WORK SHALL BE PROPERLY COORDINATED WITH ALL OTHER TRADES.

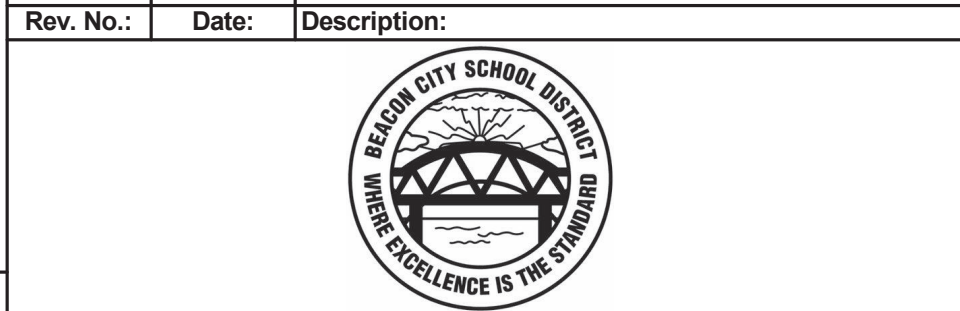
General Notes

- A. COORDINATE ALL ELECTRICAL WORK AND POWER OUTAGES WITH OWNER AND OTHER TRADES PRIOR TO THE START OF CONSTRUCTION. NO POWER OUTAGES SHALL OCCUR WITHOUT OWNER'S PRIOR KNOWLEDGE AND CONSENT.
 - B. REFER TO DRAWING G100 FOR STANDARD SYMBOLS AND ABBREVIATIONS.
 - C. PROPERLY IDENTIFY ALL CIRCUITS AT PANELS AND J-BOXES AND IN ACCORDANCE WITH PROJECT SPECIFICATIONS.
 - D. PROVIDE ALL ADAPTERS, COUPLINGS AND ASSOCIATED FITTINGS REQUIRED FOR COMPLETE OPERATIONAL SYSTEM.
 - E. DISCONNECTS AND CONTROLLERS WILL BE FURNISHED WITH MECHANICAL AND PLUMBING EQUIPMENT AND INSTALLED BY ELECTRICAL CONTRACTOR.
 - F. NEW CIRCUIT BREAKERS IN EXISTING PANELBOARDS SHALL BE UL LISTED FOR USE IN THE PANELBOARD AND SHALL MATCH THE AIC RATING OF THE PANELBOARD. AMEND PANELBOARD DIRECTORY ACCORDINGLY.
 - G. COORDINATE ALL ELECTRICAL WORK WITH OTHER TRADES.
 - H. TESTS OF ALL ELECTRICAL WORK SHALL BE PERFORMED IN THE PRESENCE OF THE ENGINEER OR ARCHITECT, AS EQUIPMENT IS INSTALLED AND AS SYSTEMS ARE COMPLETED. IN ADDITION AN ELECTRIC APPROVED CERTIFICATE SHALL BE ISSUED BY AN ELECTRICAL INSPECTION AGENCY.
 - I. UNLESS NOTED ELSEWHERE ON THE CONTRACT DOCUMENTS, THE FOLLOWING LIST REPRESENTS THE TYPICAL MOUNTING HEIGHTS FOR THE DEVICES SHOWN:
 - 1. SWITCHES AND PANIC STATIONS.....48" (TO TOP)
 - 2. RECEPTACLES.....16"
 - 3. DISCONNECT SWITCHES.....60" (TO TOP)
 - 4. MOTOR STARTERS.....60" (TO TOP)
- THE HEIGHTS INDICATED SHALL BE NOMINAL TO THE BOTTOM OF THE BOX UNLESS NOTED OTHERWISE. MAINTAIN HEIGHT CONSISTENCY BETWEEN NEW AND EXISTING DEVICES.



S.E.D. Control No. 13-02-00-01-0-020-013

Rev. No.	Date	Description



complex world | CLEAR SOLUTIONS

Tetra Tech Engineers, Architects & Landscape Architects, P.C.

BID SET

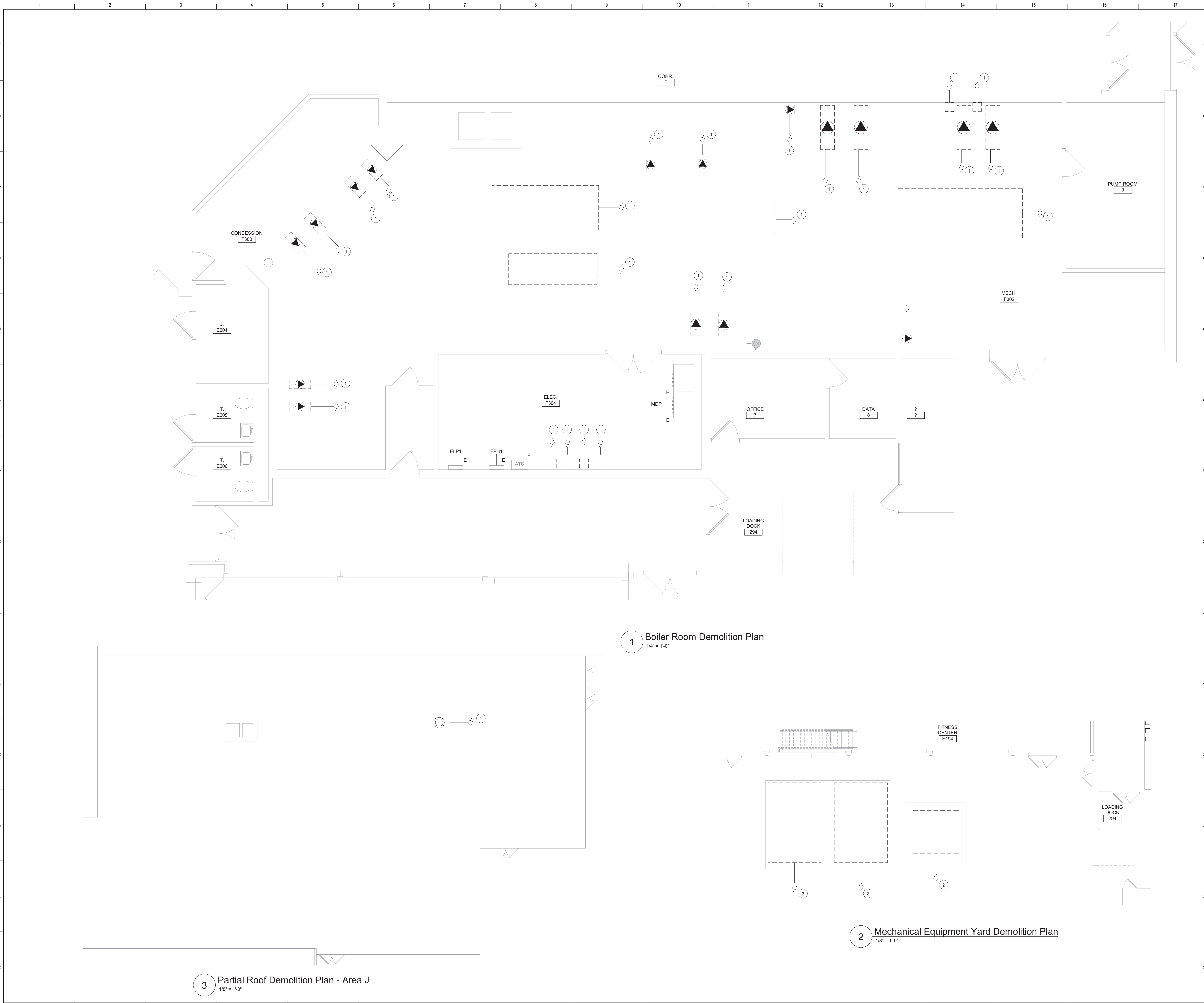


Beacon City School District
Beacon, NY

Reconstruction to:
Beacon High School

First Floor Key Plan

Drawn By: SAS	Date: 03/28/2025	Drawing Number:
Project No.: 279180-24002.1	FE050	



Key Notes:

- 1 REMOVE POWER CIRCUITRY TO HVAC EQUIPMENT BACK TO SOURCE. LABEL ANY UNUSED CIRCUIT BREAKERS AS "SPARE" AND UPDATE PANEL DIRECTORY AS NECESSARY.
- 2 REMOVE POWER CIRCUITRY TO EXISTING COOLING TOWER PUMPS, FANS, HEATERS, AND CONVENIENCE RECEPTACLES BACK TO SOURCE. LABEL ANY UNUSED CIRCUIT BREAKERS AS "SPARE" AND UPDATE PANEL DIRECTORY AS NECESSARY.

General Notes:

A. REFER TO DRAWING FE050 FOR GENERAL NOTES.

Key Plan
N.T.S.

S.E.D. Control No. 13-02-00-01-0-020-013

Rev. No.	Date	Description

complex world | CLEAR SOLUTIONS

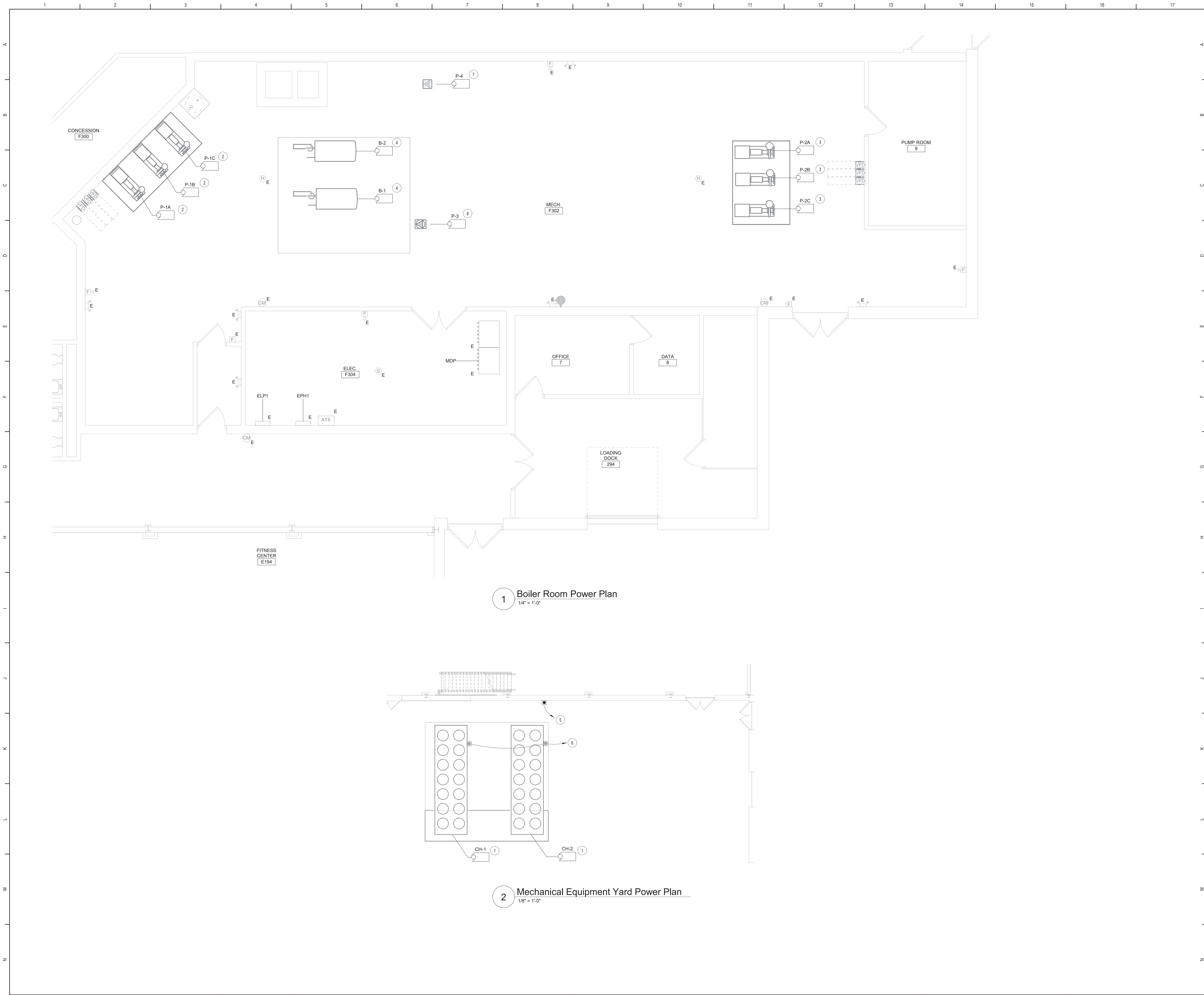
Tetra Tech Engineers, Architects & Landscape Architects, P.C.

Beacon City School District
Beacon, NY

Reconstruction to:
Beacon High School

First Floor and Yard Demolition Plan

Drawn By: SAS	Date: 03/28/2025	Drawing Number: FE100
Project No.: 279180-24002.1		



1 Boiler Room Power Plan
1/4" = 1'-0"

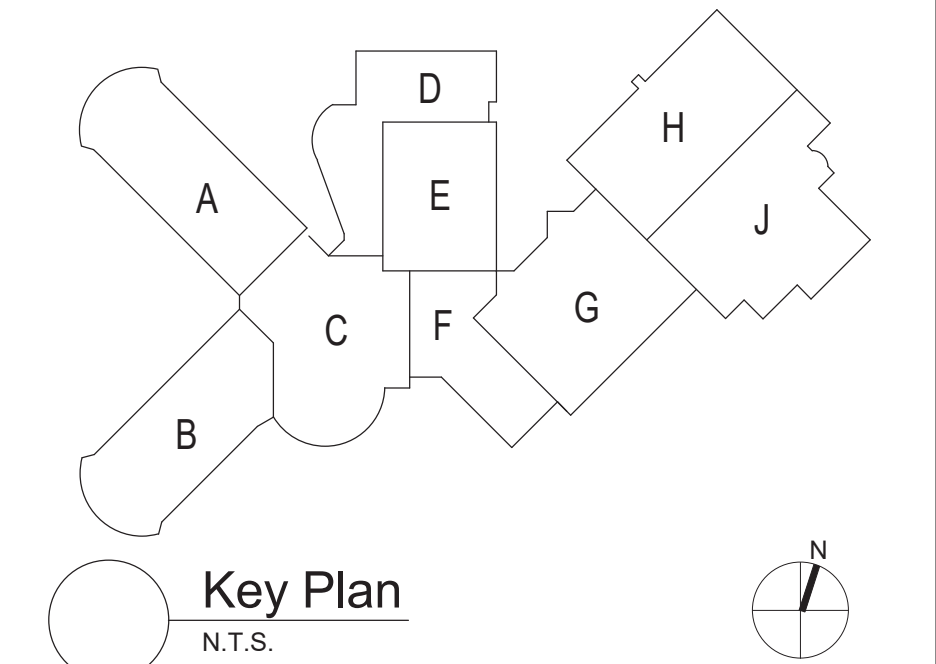
2 Mechanical Equipment Yard Power Plan
1/8" = 1'-0"

Key Notes:

- 1 REMOVE 3-POLE CIRCUIT BREAKER IN MDP PREVIOUSLY SERVING THE CHILLER(S) THAT ARE SCHEDULED TO BE REMOVED. PROVIDE 400A-3P CIRCUIT BREAKER IN AVAILABLE SPACE IN MPD AND CONNECT USING 2 SETS OF (3) #3/0, (1) #2 G. IN 2" CONDUIT. AMEND PANELBOARD DIRECTORY AS NECESSARY.
- 2 REMOVE 3-POLE CIRCUIT BREAKER IN PANEL EPH1 PREVIOUSLY SERVING THE PUMP(S) THAT ARE SCHEDULED TO BE REMOVED. PROVIDE 60A-3P CIRCUIT BREAKER IN AVAILABLE SPACE IN PANEL EPH1 AND CONNECT TO PUMP VFD USING (3) #8, (1) #10 G. IN 3/4" CONDUIT. AMEND PANELBOARD DIRECTORY AS NECESSARY.
- 3 PROVIDE 70A-3P CIRCUIT BREAKER IN AVAILABLE SPACE IN MDP AND CONNECT TO PUMP VFD USING (3) #6, (1) #10 G. IN 3/4" CONDUIT. AMEND PANELBOARD DIRECTORY AS NECESSARY.
- 4 REMOVE 3-POLE CIRCUIT BREAKER IN PANEL EPH1 PREVIOUSLY SERVING THE BOILER. PROVIDE 20A-3P CIRCUIT BREAKER IN SAME SPACE IN PANEL EPH1 AND CONNECT USING (3) #12, (1) #12 G. IN 1/2" CONDUIT. AMEND PANELBOARD DIRECTORY AS NECESSARY.
- 5 PROVIDE CONNECTION FOR HEAT TRACE. REFER TO MECHANICAL DRAWINGS FOR HEAT TRACE REQUIREMENTS. PROVIDE 20A-2P 208V CIRCUIT BREAKER IN AVAILABLE SPACE IN PANEL ELP1 AND CONNECT USING (2) #12, (1) #12 G. IN 1/2" CONDUIT. AMEND PANELBOARD DIRECTORY AS NECESSARY.
- 6 PROVIDE 120V CONNECTION FOR CONVENIENCE OUTLETS THAT ARE PROVIDED WITH THE CHILLER(S). PROVIDE 20A-1P 120V CIRCUIT BREAKER IN AVAILABLE SPACE IN PANEL ELP1 AND CONNECT USING (2) #12, (1) #12 G. IN 1/2" CONDUIT. AMEND PANELBOARD DIRECTORY AS NECESSARY.
- 7 PROVIDE 20A-1P 120V CIRCUIT BREAKER IN AVAILABLE SPACE IN PANEL ELP1 AND CONNECT USING (2) #12, (1) #12 G. IN 1/2" CONDUIT. AMEND PANELBOARD DIRECTORY AS NECESSARY.
- 8 PROVIDE 20A-3P 208V CIRCUIT BREAKER IN AVAILABLE SPACE IN PANEL ELP1 AND CONNECT USING (3) #12, (1) #12 G. IN 1/2" CONDUIT. AMEND PANELBOARD DIRECTORY AS NECESSARY.

General Notes:

- A. REFER TO DRAWING FE050 FOR GENERAL NOTES.



S.E.D. Control No. 13-02-00-01-0-020-013

Rev. No.:	Date:	Description:



complex world | CLEAR SOLUTIONS

Tetra Tech Engineers, Architects & Landscape Architects, P.C.

BID SET



Beacon City School District
Beacon, NY

Reconstruction to:
Beacon High School

First Floor Power Plan

Drawn By: SAS	Date: 03/28/2025	Drawing Number:
Project No.: 279180-24002.1	FE160	

[illegible]

BID SET



M	Reconstruction to: Beacon High School
---	--

N	Drawn By:	Date:	Drawing Number:
	SAS	03/28/2025	

Project No.:	279180-24002.1
--------------	----------------

FE500