

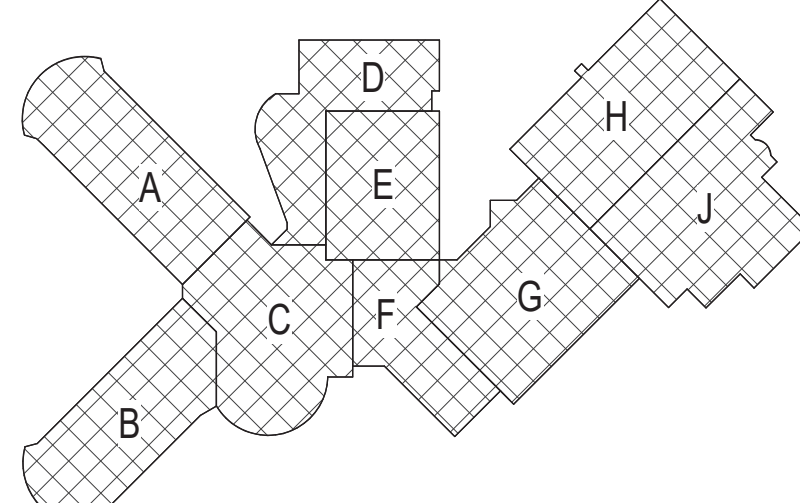
1 First Floor - Key Plan
3/64" = 1'-0"

General Notes

- THE FOLLOWING GENERAL NOTES APPLY TO ALL "AM" SERIES DRAWINGS.
- REFER TO ALL CONTRACT DOCUMENTS, DRAWINGS AND SPECIFICATIONS, FOR DETAILED STANDARDS AND REQUIREMENTS.
- REPORT UNSAFE OR UNSATISFACTORY CONDITIONS IN WRITING TO ARCHITECT AND RESOLVE ISSUES BEFORE PROCEEDING.
- WORK INCLUDES ALL LABOR AND MATERIALS REQUIRED TO PROVIDE COMPLETE WORKING SYSTEMS.
- COORDINATE PHASING REQUIREMENTS AT JOB MEETINGS AND ON WORK SCHEDULES.
- DO NOT SCALE DRAWINGS. PIPING AND DUCTWORK ARE SHOWN DIAGRAMMATICALLY. IT IS NOT POSSIBLE TO SHOW EVERY TRANSITION, FITTING, ASPECT RATIO CHANGE, ETC. PROVIDE AS REQUIRED TO FIT WITHIN STRUCTURAL CONSTRAINTS. EXAMINE CONDITIONS UNDER WHICH THE WORK IS TO BE PERFORMED AND VERIFY ALL ACCESS, LOCATIONS, DIMENSIONS, ARRANGEMENTS, ELECTRICAL CHARACTERISTICS AND INTERFERENCE IN THE FIELD PRIOR TO BID.
- VERIFY EXTENT OF CEILING WORK SHOWN ELSEWHERE IN THE CONTRACT DOCUMENTS. PROVIDE FOR ADDITIONAL CEILING SYSTEM REMOVAL, PROTECTION, AND REINSTALLATION AS REQUIRED FOR CONTRACT WORK.
- DEMOLITION DRAWINGS SHOW THE GENERAL SCOPE OF ITEMS AND SYSTEMS TO BE REMOVED. IT IS NOT THE INTENT TO SHOW ALL ITEMS TO BE REMOVED. FIELD VERIFY AND REMOVE ALL ASSOCIATED ITEMS BACK TO POINT OF CONTINUED SERVICE, UNLESS OTHERWISE NOTED. VERIFY WHAT ALL EQUIPMENT SERVES PRIOR TO REMOVAL.
- GIVE ALL REMOVED EQUIPMENT TO THE OWNER. DELIVER ON SITE WHERE DESIGNATED BY THE OWNER. PROMPTLY REMOVE FROM THE SITE AND LEGALLY DISPOSE OF ANY SUCH ITEMS DECLINED BY OWNER.
- IF UNANTICIPATED MECHANICAL, ELECTRICAL, OR STRUCTURAL CONFLICTS ARE ENCOUNTERED, INVESTIGATE AND REPORT BOTH NATURE AND EXTENT OF THE CONFLICT. RE-ROUTE WORK AS REQUIRED.
- CUT, DRILL, OR OTHERWISE CREATE OPENINGS AS NEATLY AS POSSIBLE, AS REQUIRED FOR THE INDICATED CONTRACT WORK. PROVIDE SUPPORT AS REQUIRED FOR AND USE METHODS LEAST LIKELY TO DAMAGE ELEMENTS TO REMAIN. PRIOR TO WORK, VERIFY LOCATIONS OF ALL STRUCTURAL MEMBERS INCLUDING CROSS BRACING, ELECTRICAL WIRING, PLUMBING, ETC. PROMPTLY NOTIFY ARCHITECT OF ANY CONFLICTS. DO NOT CUT ANY STRUCTURAL MEMBERS OR OTHER SERVICES UNTIL SPECIFICALLY DIRECTED TO DO SO. PENDING RECEIPT OF DIRECTIVE, REARRANGE SCHEDULE AS NECESSARY TO CONTINUE OVERALL JOB PROGRESS WITHOUT DELAY.
- PATCH ALL DISTURBANCES RESULTING FROM DEMOLITION OR NEW WORK TO MATCH SURROUNDING SURFACES. PATCH FOLLOWING DEMOLITION, AND AGAIN FOLLOWING WORK, WHERE HOLES FROM REMOVALS, INFILL AND PATCH TO MATCH UNLESS HOLE IS TO BE REUSED.
- PROTECT ALL CONTRACT EQUIPMENT, ELEMENTS TO REMAIN, OWNER'S BELONGINGS, AND EQUIPMENT TO BE REUSED OR RETAINED BY OWNER DURING ALL CONTRACT WORK. AT NO ADDITIONAL COST TO OWNER, REPAIR OR REPLACE ITEMS WHICH ARE DAMAGED.
- THOROUGHLY CLEAN FOLLOWING DEMOLITION AND BEFORE BEGINNING CONTRACT INSTALLATIONS. THOROUGHLY CLEAN AGAIN DURING AND FOLLOWING CONTRACT WORK AS REQUIRED. LEAVE ALL WORK AREAS CLEANER THAN FOUND. LEGALLY DISPOSE OF ALL CONSTRUCTION DEBRIS.
- PROVIDE TEMPORARY PIPING, DUCT, HEAT, WEATHERPROOFING, ETC. TO SERVICES TO REMAIN UNTIL PERMANENT INSTALLATIONS CAN BE MADE.
- ALL EXCESS MATERIALS AND SCRAPS ARE CONTRACTOR'S PROPERTY. PROMPTLY REMOVE FROM SITE UNLESS SPECIFICALLY DIRECTED OTHERWISE.
- SEAL ALL FLOOR, WALL AND CEILING PENETRATIONS PER FIRE RESISTANCE RATINGS NOTED ON FG-SERIES DRAWINGS, BUT NOT LESS THAN 1-HOUR, AND IN ACCORDANCE WITH SECTION 07 84 13 - PENETRATION FIRESTOPPING. THIS INCLUDES ALL NEW PENETRATIONS AND EXISTING UNFIRESTOPPED PENETRATIONS CREATED BY REMOVALS, AS REQUIRED TO PERFORM THE WORK.

Keyed Notes

- INSTALL DIFFERENTIAL PRESSURE SENSOR IN EXISTING HW PIPING. PIPE SIZE INDICATED ON PLAN.



Key Plan
N.T.S.

S.E.D. Control No. 13-02-00-01-0-020-013

Rev. No.	Date	Description



complex world
CLEAR SOLUTIONS

Tetra Tech Engineers, Architects
& Landscape Architects, P.C.

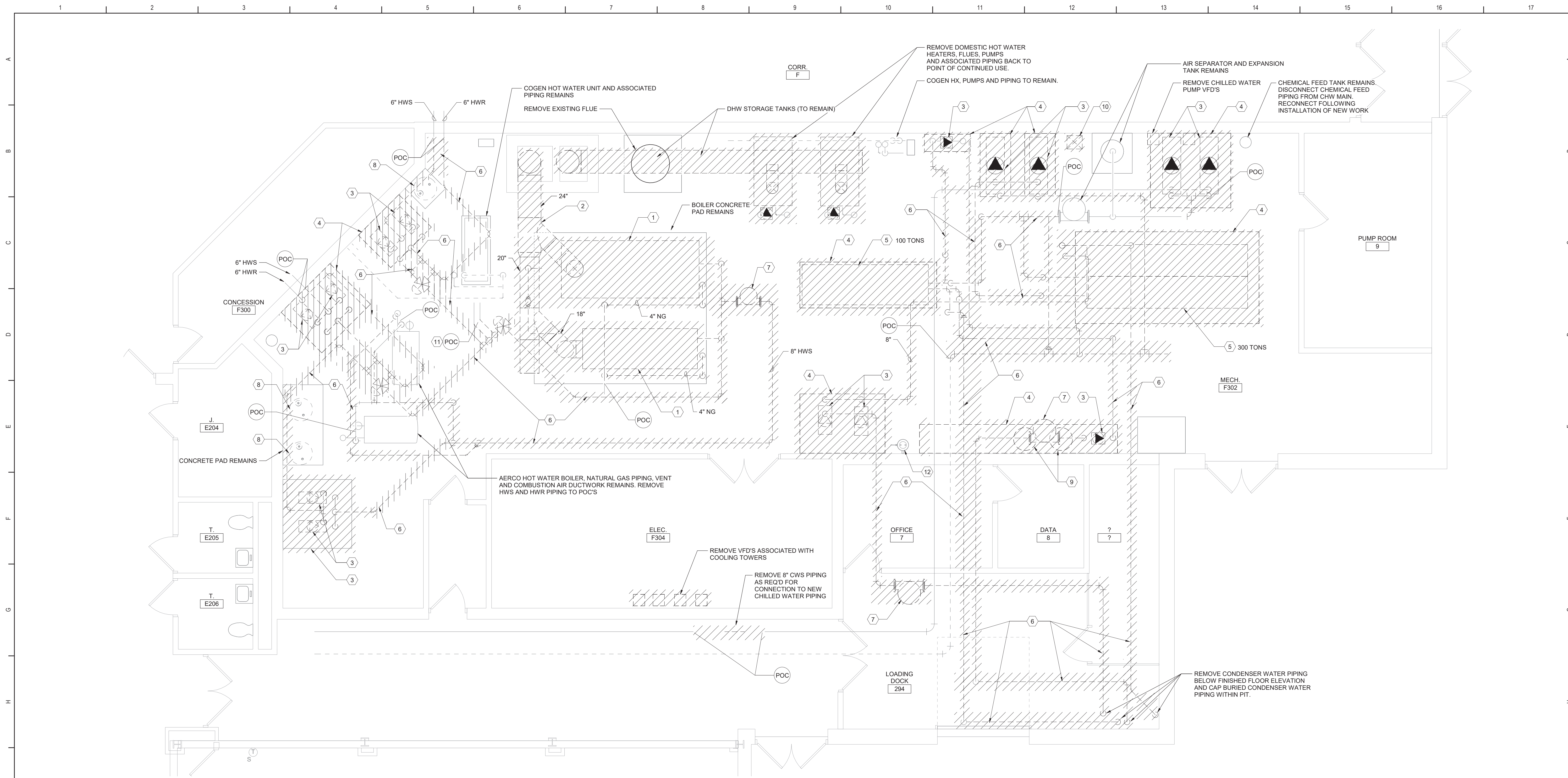


Beacon City School District
Beacon, NY

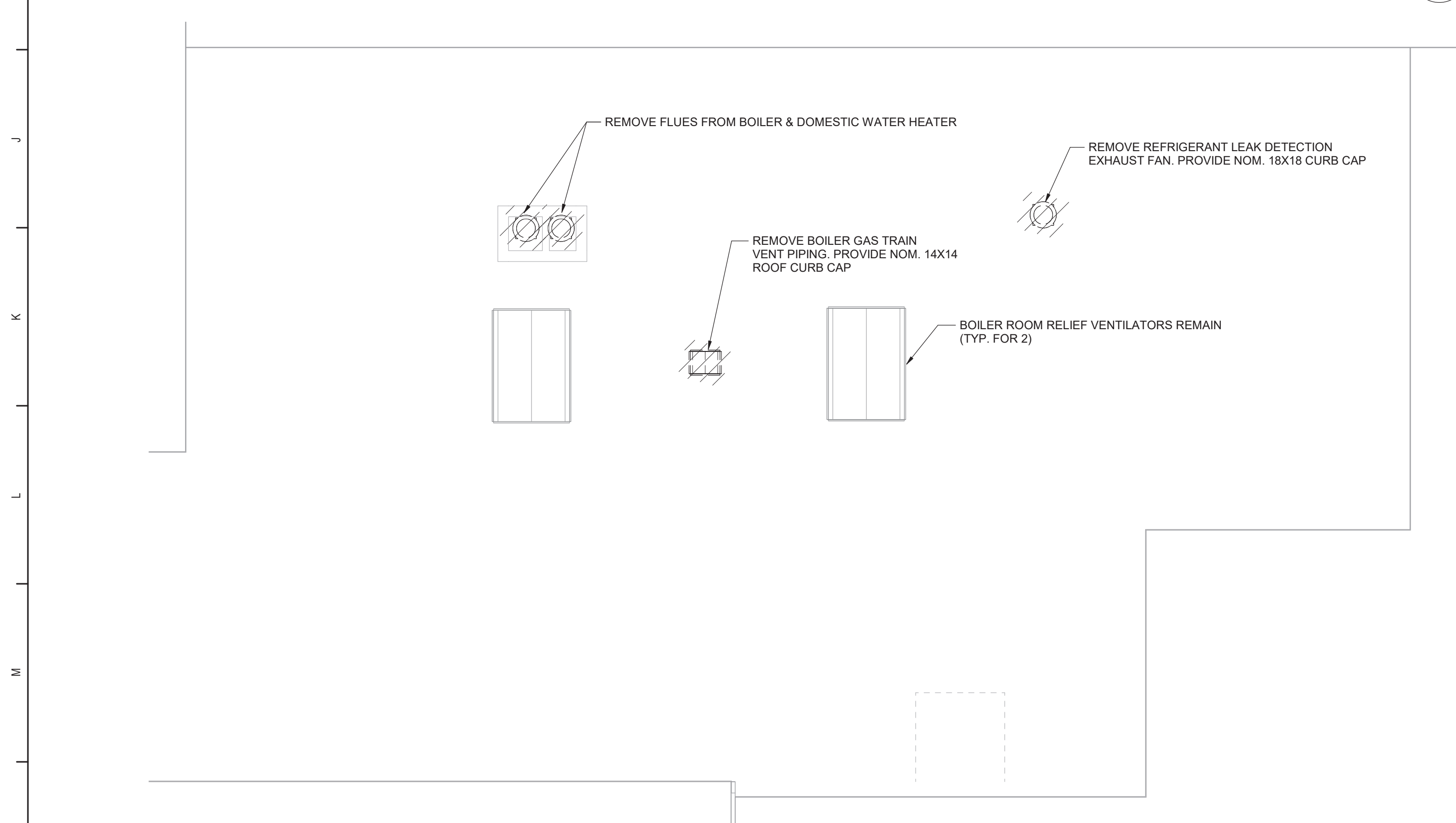
Reconstruction to:
Beacon High School

First Floor Key Plan

Drawn By: DPM/JPF1	Date: 03/28/2025	Drawing Number: FM050
Project No.: 279180-24002.1		



1 Boiler Room Demolition Plan
1/4" = 1'-0"



3 Partial Roof Demolition Plan - Area J
1/8" = 1'-0"



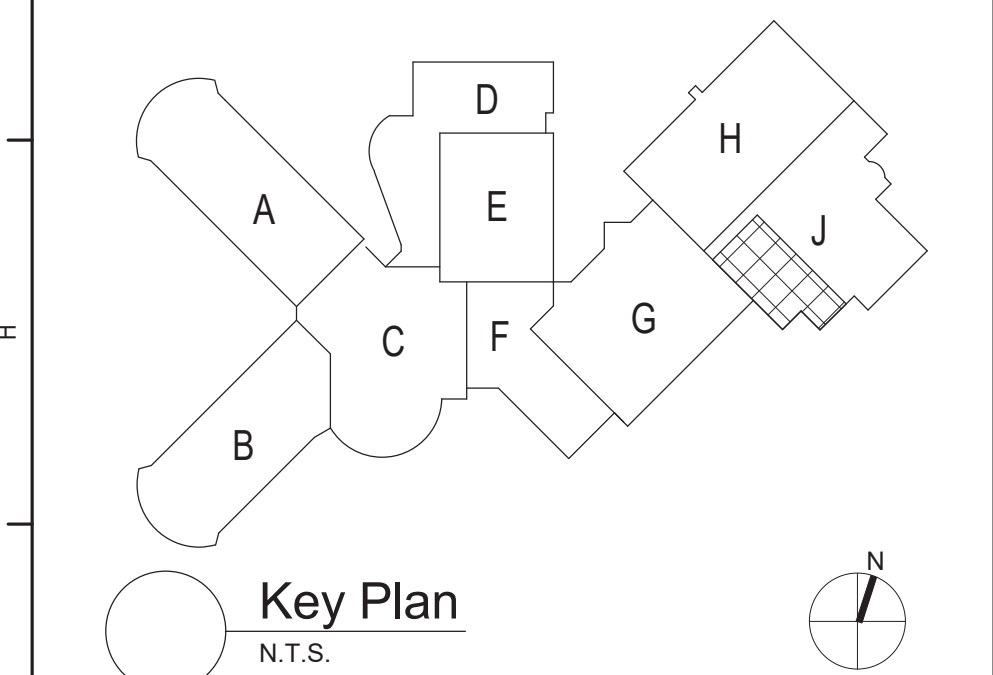
2 Mechanical Equipment Yard Demolition Plan
1/8" = 1'-0"

General Notes

A. REFER TO AM050 FOR GENERAL NOTES

Keyed Demolition Notes

- 1 REMOVE HOT WATER BOILER, BURNER, TRIM, CONNECTED HOT WATER SUPPLY, RETURN AND BLOW DOWN PIPING LEADING TO FLOOR DRAINS. BLOWDOWN PIPING NOT SHOWN FOR CLARITY. REMOVE GAS TRAIN NATURAL GAS PIPING FROM BOILER AND REMOVE TO LOCATION INDICATED INCLUDING VALVES, SWITCHES, AND VENT PIPING THROUGH ROOF. VENT PIPING NOT SHOWN FOR CLARITY. PREPARE GAS PIPING FOR EXTENSION TO NEW BOILER LOCATIONS.
- 2 DISCONNECT AND REMOVE BOILER BREECHING FROM EACH BOILER AND REMOVE COMPLETE UP TO AND INCLUDING CHIMNEY CAP, INCLUDING HANGERS AND SUPPORTS.
- 3 REMOVE PUMP, CONNECTED PIPING, AND CONTROLS INCLUDING ASSOCIATED VARIABLE SPEED DRIVE ASSOCIATED WITH SECONDARY PUMPS.
- 4 REMOVE CONCRETE PAD TO FINISHED FLOOR ELEVATION.
- 5 REMOVE WATER COOLED CHILLER, CONTROLS, CONNECTED CHILLED WATER AND CONDENSER WATER PIPING.
- 6 REMOVE PIPING FROM CONNECTED EQUIPMENT INCLUDING HANGERS AND SUPPORTS, VALVES, FITTINGS COMPLETE OR AS INDICATED TO POINT OF CONNECTION LOCATION (POC).
- 7 REMOVE AIR SEPARATOR INCLUDING CONNECTED PIPING AND SUPPORTS.
- 8 HOT WATER EXPANSION TANK REMAINS. REMOVE PIPING FROM TANK TO ASSOCIATED CONNECTION POINT ON DISTRIBUTION SYSTEM. PIPING NOT SHOWN FOR CLARITY.
- 9 REMOVE CONDENSER WATER EXPANSION TANK INCLUDING CONNECTED PIPING. PIPING NOT SHOWN FOR CLARITY.
- 10 REMOVE REFRIGERANT LEAK DETECTION SYSTEM EXHAUST FAN DUCTWORK, DAMPER AND ASSOCIATED CONTROLS. PROVIDE CURB CAP.
- 11 DISCONNECT COGEN SUPPLY PIPING. REFER TO FM130 FOR ADDITIONAL INFORMATION.
- 12 EXISTING EMERGENCY EYEWASH TO REMAIN.



S.E.D. Control No. 13-02-00-01-0-020-013

Rev. No.	Date	Description



complex world | CLEAR SOLUTIONS

Tetra Tech Engineers, Architects & Landscape Architects, P.C.

BID SET

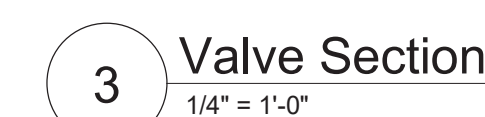
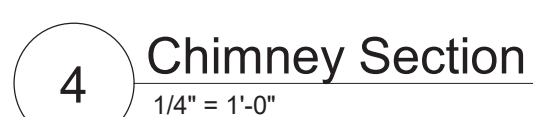


Beacon City School District
Beacon, NY

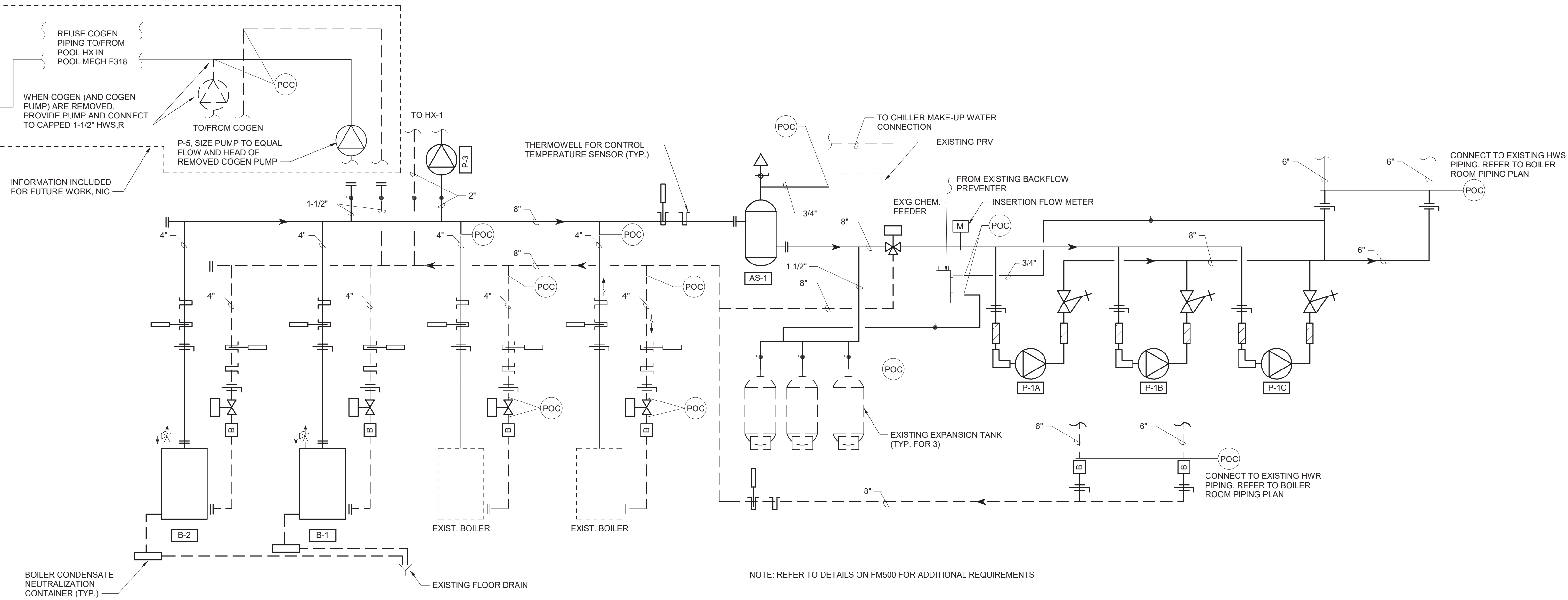
Reconstruction to:
Beacon High School

First Floor, Roof and Yard Demolition Plan

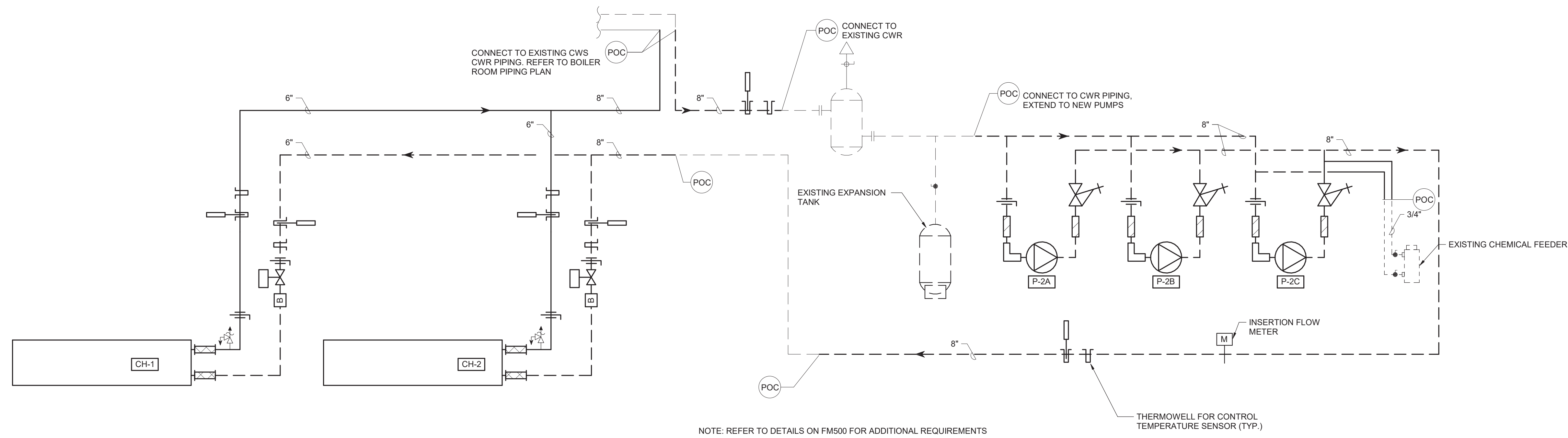
Drawn By: DPM/JPF1	Date: 03/28/2025	Drawing Number:
Project No.: 279180-24002.1	FM100	



FM130



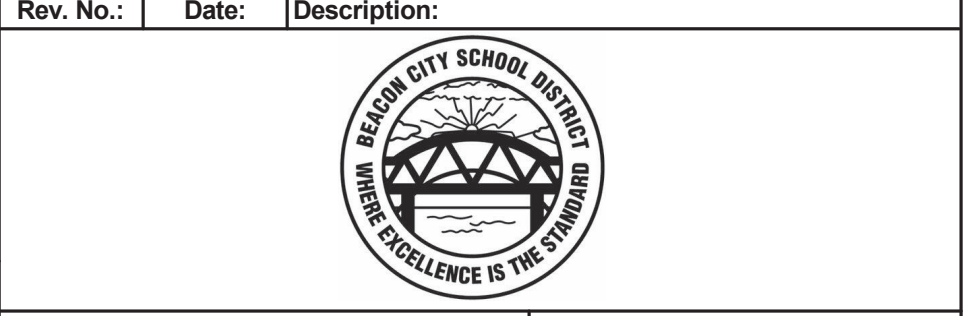
1 Hot Water Piping Schematic
NTS



2 Chilled Water Piping Schematic
NTS

S.E.D. Control No. 13-02-00-01-0-020-013

Rev. No.	Date	Description



complex world

CLEAR SOLUTIONS

Tetra Tech Engineers, Architects & Landscape Architects, P.C.

BID SET

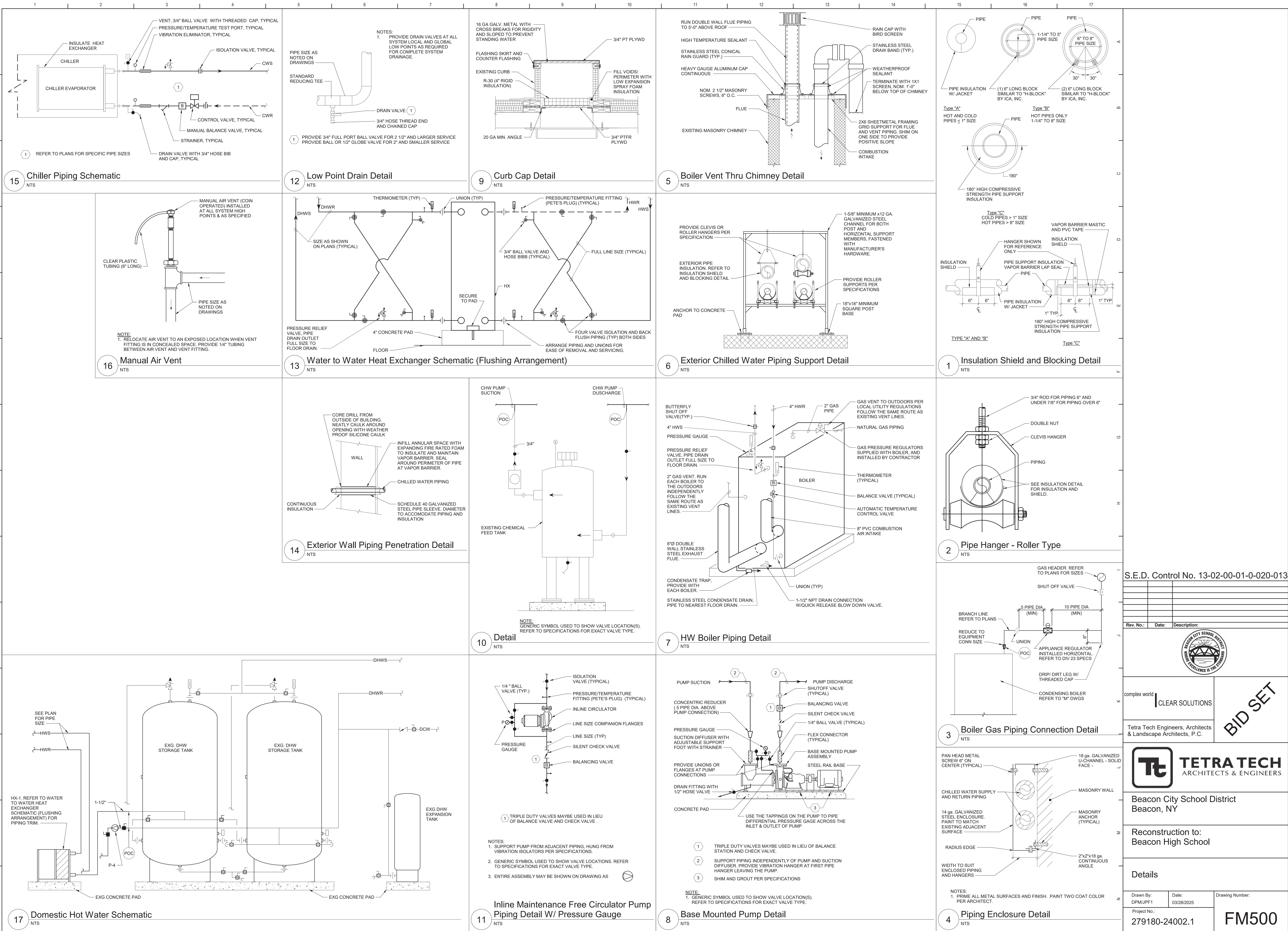


Beacon City School District
Beacon, NY

Reconstruction to:
Beacon High School

Hot and Chilled Water Boiler Room
Piping Schematics

Drawn By: DPM/JPF1	Date: 03/28/2025	Drawing Number:
Project No.: 279180-24002.1	FM200	



S.E.D. Control No. 13-02-00-01-0-020-013

Rev. No.: Date: Description:



complex world | CLEAR SOLUTIONS

Tetra Tech Engineers, Architects & Landscape Architects, P.C.

TETRA TECH
ARCHITECTS & ENGINEERS

Beacon City School District
Beacon, NY

Reconstruction to:
Beacon High School

Details

Drawn By: DPM/JPF1 Date: 03/28/2025 Drawing Number:

Project No.: 279180-24002.1

FM500

BID SET

