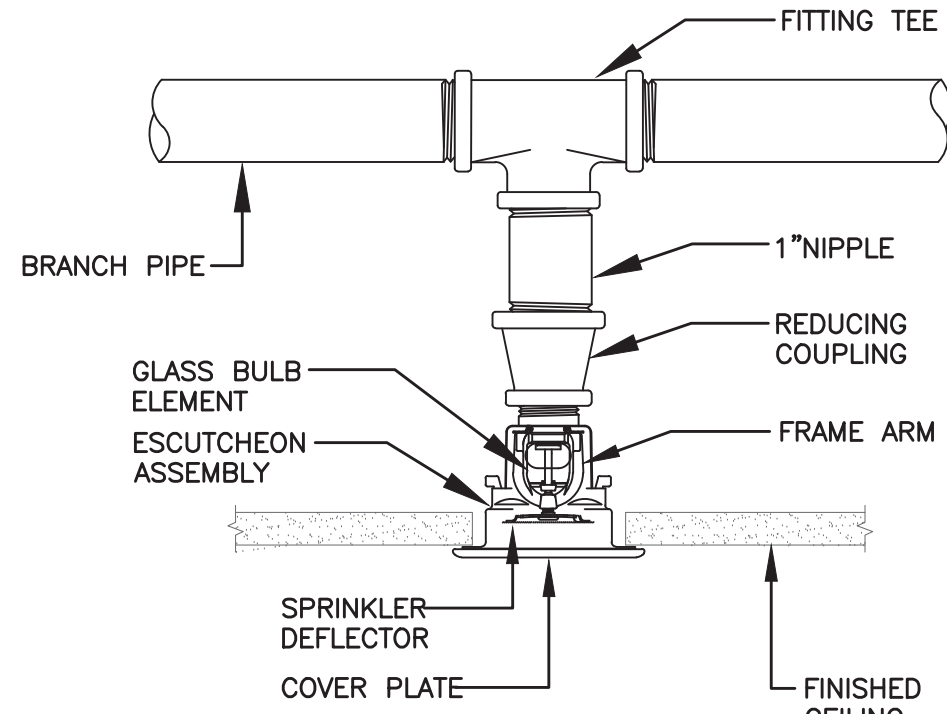
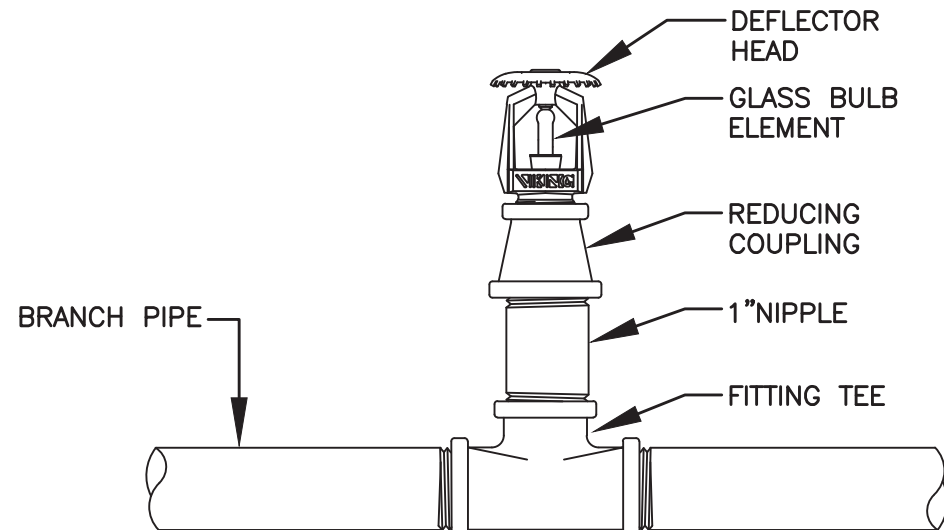


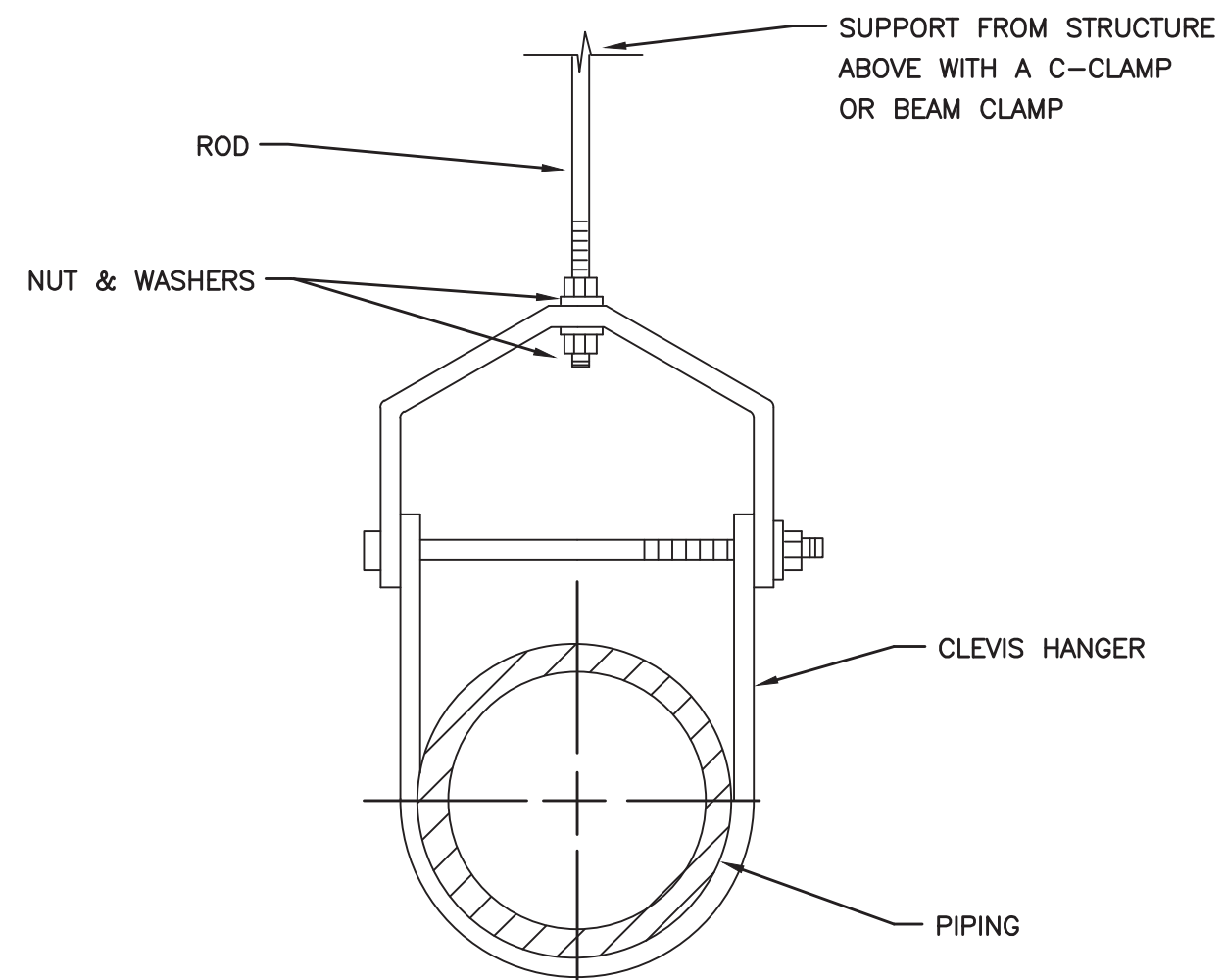
SPRINKLER ASSEMBLY
NO SCALE



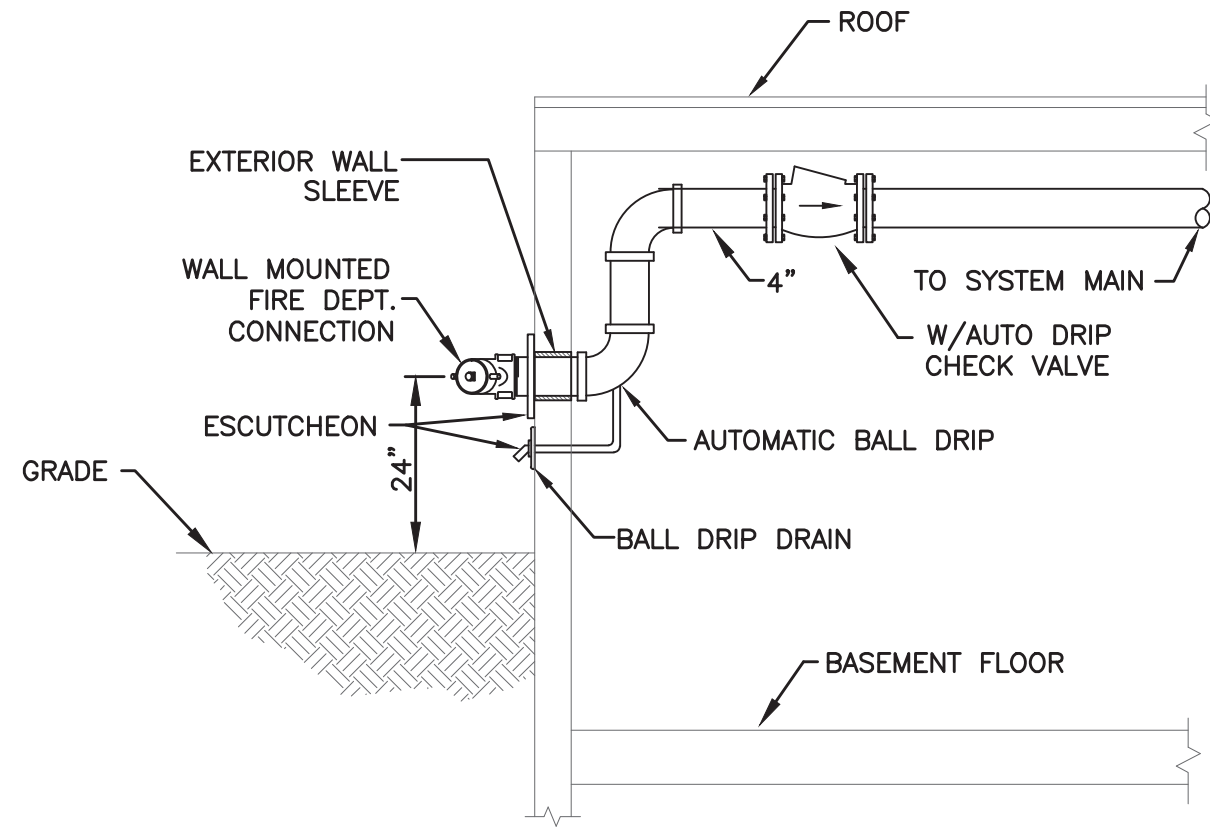
CONCEALED
SPRINKLER HEAD DETAIL
NO SCALE



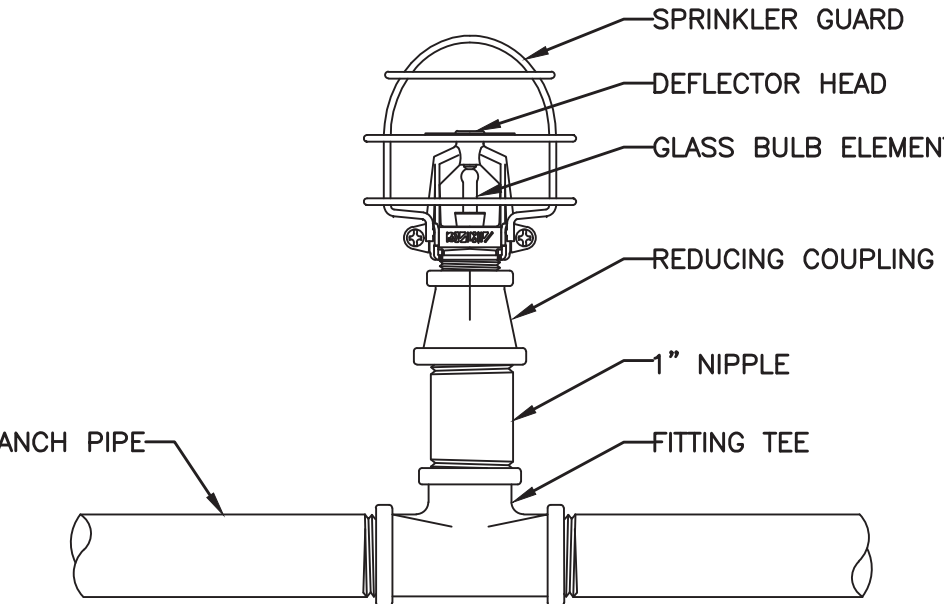
UPRIGHT SPRINKLER HEAD DETAIL
NO SCALE



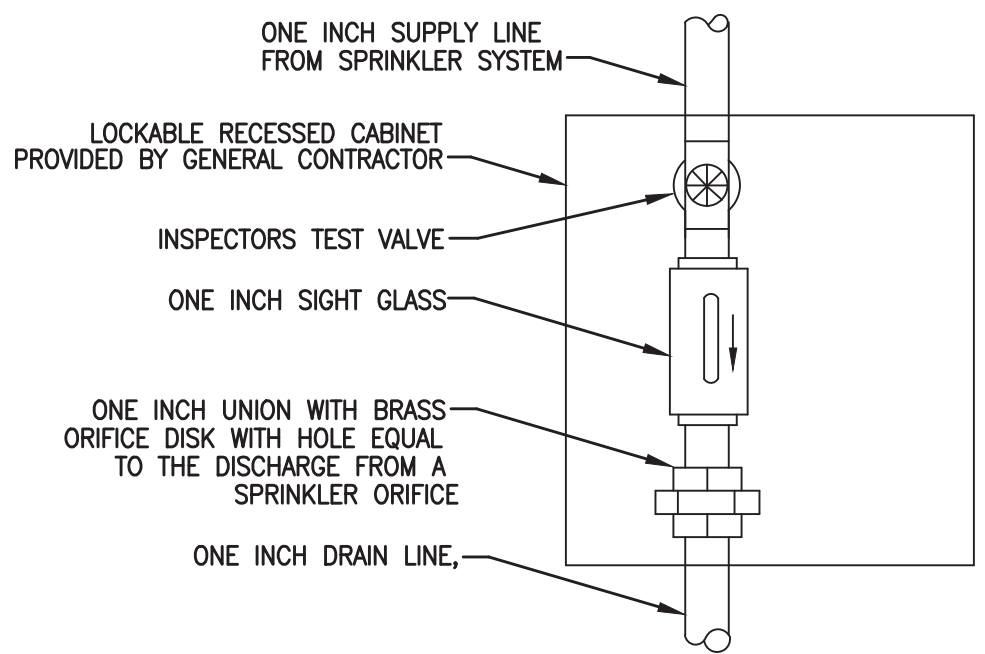
TYP. PIPE HANGER
NO SCALE



FIRE DEPARTMENT CONNECTION
NO SCALE



UPRIGHT SPRINKLER HEAD DETAIL
W/SPRINKLER GUARD
NO SCALE



INSPECTORS TEST AND
DRAIN STATION DETAIL
NO SCALE

SPRINKLER LEGEND

—	DRAIN PIPING
—SPK—	WET SPRINKLER PIPING
---	EXISTING PIPING TO REMAIN
-X-X-X-	EXISTING PIPING TO BE REMOVED
→	DIRECTION OF FLOW
○	BOTTOM OF PIPE TAKE-OFF CONNECTION
○	PIPE RISE OR UP THRU SLAB
○	PIPE DROP OR DOWN THRU SLAB
○	TOP OF PIPE TAKE-OFF CONNECTION
○	NIPPLE & CAP AUXILIARY DRAIN
○	PRESSURE GAUGE
— —	UNION
⊗	TEST VALVE & DRAIN
⊗	OUTSIDE SCREW & YOKE VALVE (OS&Y)
⊗	CONCENTRIC REDUCER
⊗	ECCENTRIC REDUCER
⊗	PRESSURE REDUCING VALVE
⊗	OUTSIDE SCREW & YOKE (OS&Y) W/ TAMPER SWITCH
⊗	CHECK VALVE
⊗	HOSE VALVE
⊗	FLOW SWITCH
⊗	TAMPER SWITCH
⊗	POINT OF NEW CONNECTION TO EXISTING
TYP	TYPICAL
EL	ELEVATION ABOVE FINISHED FLOOR
(M)	SPRINKLER NODE

FIRE PROTECTION EQUIPMENT

OS&Y GATE VALVE
2" AND LARGER: GRAY IRON BODY, THREADED ENDS; SOLID WEDGE, RISING STEM. MANUFACTURER: KENNEDY MODEL KS-FW

BP1 - DOUBLE CHECK VALVE
BY WATTS MODEL#774DCDA OR EQUAL, TORSION SPRUNG CHECK VALVE, SS BODY, BRONZE METER (GPM OR CFM), UNDERWRITERS LABORATORIES APPROVED OSY SHUT-OFF VALVES, INSTALLED VERTICALLY AND PROVIDE A MINIMUM OF 24" BETWEEN EACH OS&Y VALVE TO ANY OBSTRUCTION.

FIRE DEPT. CONNECTION
UL LISTED, FM APPROVED. CASS BRASS BODY, CAST ROUND PLATE WITH DOUBLE FEMALE ADAPTER, PLUG AND CHAIN, BRANDING "AUTO SPKR", THREADS ACCORDING TO NFPA 1963 AND MATCHING LOCAL FIRE DEPARTMENT SIZES AND THREADS.
MANUFACTURER: CROKER MODEL #6405-PB

CHECK VALVES
SWING CHECK VALVES, 2 1/2" AND LARGER: CAST-IRON BODY, BRONZE SEAT, EPDM CLAPPER W/STAINLESS STEEL ARM AND GROOVED ENDS.
MANUFACTURER: **RELIABLE** MODEL: REL-50GG

BALL DRIP VALVES
AUTOMATIC DRAIN VALVE, 3/4", BALL CHECK DEVICE W/THREADED ENDS.
MANUFACTURER: **VIKING** MODEL: MODEL J-1

TAMPER SWITCHES
ELECTRIC SINGLE POLE, DOUBLE THROW WITH NORMALLY CLOSED CONTACTS, INCLUDE DESIGN THAT SIGNALS CONTROLLED VALVE IS IN OTHER THAN FULLY OPEN POSITION. MEA No. MANUFACTURER: SYSTEM SENSOR MODEL OSY2

SPRINKLER GUARD
WIRE-CAGE TYPE, INCLUDING FASTENING DEVICE FOR ATTACHING TO SPRINKLER. INSTALL PER MANUFACTURERS RECOMMENDATIONS. LOCATED AS NOTED ON DWGS.
MANUFACTURER: **VIKING** MODEL: D-1

FIRE BELL FR-1
ELECTRIC FIRE ALARM BELL 24 VOLTS
MANUFACTURER: **POTTER ROEMER** MODEL: 6230

FLOW SWITCH FS-1
VANE TYPE WATERFLOW ALARM SWITCH
MANUFACTURER: **POTTER ROEMER** MODEL: VSR-4

BUTTERFLY VALVE
2-1/2" AND LARGER: BRONZE, CAST-IRON, OR DUCTILE-IRON BODY; WAFER TYPE OR WITH FLANGED OR GROOVED ENDS.
MANUFACTURER: **VIKING** MODEL: BVG-7

PIPING AND MATERIALS SCHEDULE

PIPING SYSTEM	SIZE RANGE	PIPE MATERIALS	JOINTS	FITTINGS	INSULATION	SHUTOFF VALVES
WET PIPING	2" & SMALLER	STEEL, SCH 40, ASTM A53/A53M	THREADED	150# MALLEABLE-IRON	NA	NA
WET PIPING	2 1/2" & LARGER	STEEL, SCH 40, ASTM A53/A53M	GROOVED	VICTALUC STYLE 77	NA	NA

NOTES:
REFER TO SPECIFICATIONS ON DRAWING FOR ADDITIONAL DETAILS

SPRINKLER HEAD LEGEND

SYM	DESCRIPTION	COVERAGE	METAL	TEMP	K. FACTOR	NPT	ORIF	MPG./OR EQUAL	MODEL#	CONN.	RESPONSE	COLOR	REMARKS
⊗	UPRIGHT STND. COV.	NFPA 13	BRASS	155°	5.6	1"	1/2"	VIKING	VK300	THREAD	QUICK	WHITE	1,2,3
⊗	CONCEALED PENDANT	NFPA 13	BRONZE	155°	5.6	1"	1/2"	VIKING	VK462	THREAD	QUICK	WHITE	1,2,3
●	PENDANT	NFPA 13	BRONZE	155°	5.6	1"	1/2"	VIKING	VK302	THREAD	QUICK	WHITE	1,2,3

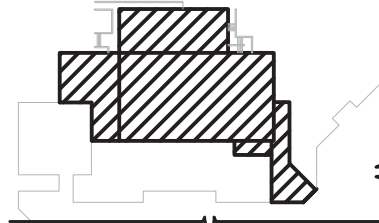
- ALL SPRINKLER HEADS MODELS OR APPROVED EQUAL.
- ALL SPRINKLER HEADS ARE QUICK RESPONSE TYPE.
- ALL SPRINKLER HEADS TO BE WHITE FINISH UNLESS NOTED OTHERWISE. SEE SCHEDULE FOR FURTHER INFORMATION.

SPRINKLER PIPE SIZING

- BRANCH PIPE SIZING AS FOLLOWS:

1 SP. HEAD	1"
2 SP. HEAD	1"
3 SP. HEAD	1 1/4"
4 SP. HEAD	1 1/2"
5 SP. HEAD	1 1/2"
6 SP. HEAD	2"
10 SP. HEAD	2"
30 SP. HEAD	2 1/2"
60 SP. HEAD	3"

AS PER USA CONGRESS ARCHITECTURAL WORKS COPYRIGHT PROTECTION ACT OF 1990 ALL IDEAS AND DESIGNS INCLUDING DERIVATIVES THEREOF, ALL DRAWINGS AND SPECIFICATIONS CONSTITUTE THE ORIGINAL COPYRIGHT WORK BY FULLER D'ANGELO, P.C. (F&D). THE DRAWINGS AND SPECIFICATIONS AS INSTRUMENTS OF SERVICE BY F&D ARE CREATED BY F&D FOR THIS PROJECT ONLY AND REMAIN THE PROPERTY OF F&D. ANY REPRODUCTION WITHOUT THE PRIOR CONSENT OF F&D IS PROHIBITED.



KEY PLAN
N

408 KENNELWOOD ROAD ELLENHURST NEW YORK 11538
TEL: 914-898-4444 FAX: 914-898-1171
Copyright 2023 by Fuller D'Angelo Architects, P.C.

FULLER
D'ANGELO
P.C.
ARCHITECTS
PLANNERS

LFG
LANDMARK
FACILITIES
GROUP, INC.
252 East Avenue
Stamford, CT 06905
(203) 366-4628 FAX
(203) 366-4019 Fax

LICENSE EXP. DATE: 03-31-2026

S.E.D. CONTROL NUMBER:
48-06-01-06-0-001-026

PROJECT:
BREWSTER CENTRAL SCHOOL DISTRICT
C.V. STARR INTERMEDIATE SCHOOL
RENOVATIONS & RELATED WORK
20 FARM TO MARKET ROAD BREWSTER, NY 10509

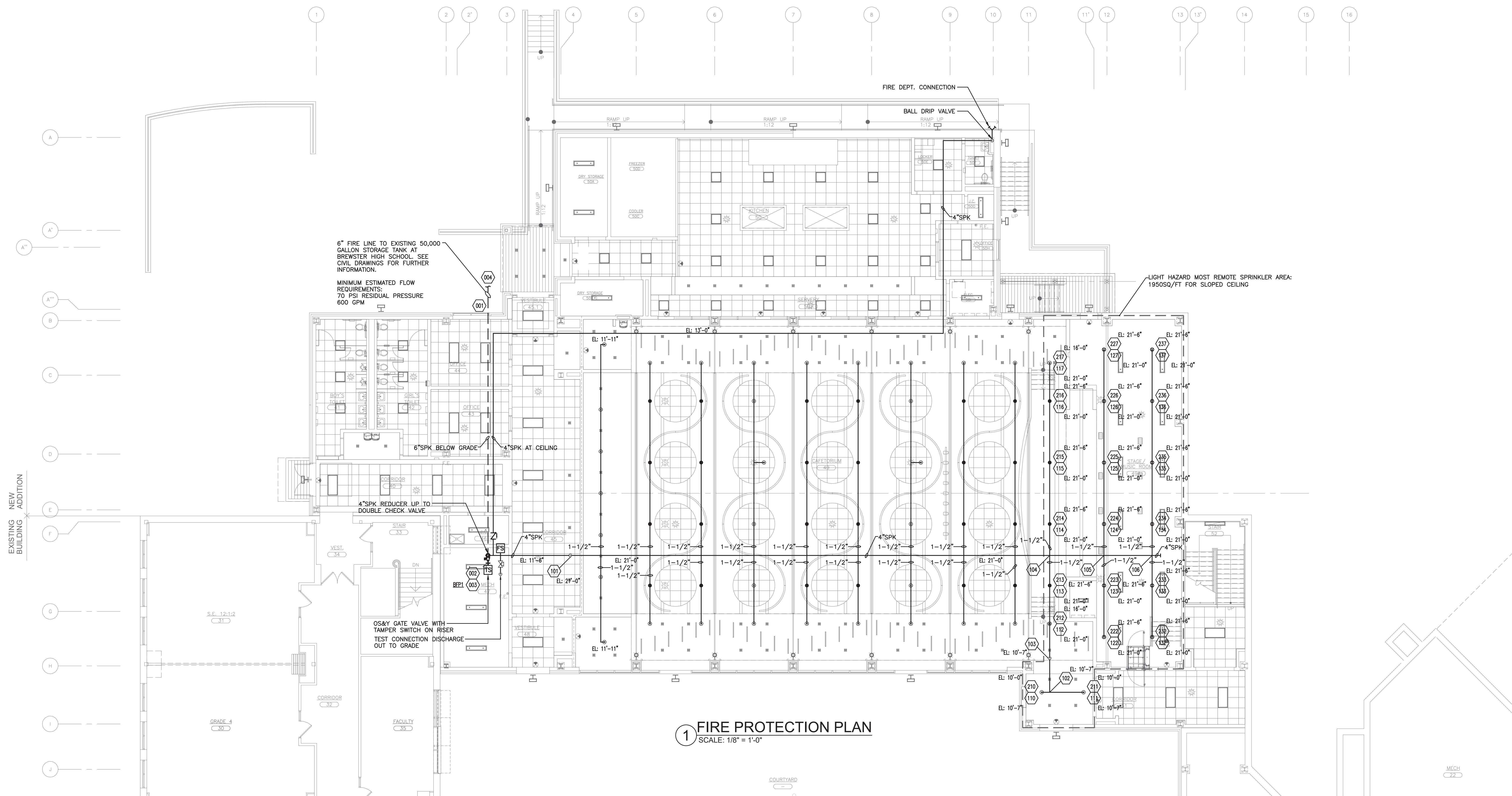
DRAWING TITLE:
FIRE PROTECTION
DETAILS

12-09-2024	BID
09-25-2024	ADDENDUM 1
03-05-2024	SED SUBMISSION
11-29-2023	D.D. SUBMISSION
08-31-2023	S.D. SUBMISSION
DATE	ISSUED TO

SHEET SIZE: 30"x42"	DRAWING NO.:
SCALE: AS NOTED	CVS FP001
DRAWN BY: LFG	FILE NO.:
	23505.02

PLOT DATE: December 02, 2024 — 10:31am

FILE: N:\Brewster Central Schools\2023 Capital Projects\CV Starr Intermediate School\PACKAGE 2 - Cafetorium\ACAD\Fire Protection\CVS PKG2_FP-100_RN.dwg

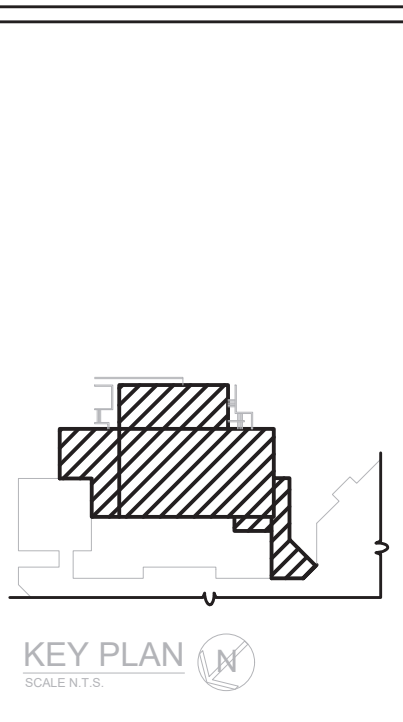


1 FIRE PROTECTION PLAN
SCALE: 1/8" = 1'-0"

SPRINKLER LEGEND	
	DRAIN PIPING
	WET SPRINKLER PIPING
	EXISTING PIPING TO REMAIN
	EXISTING PIPING TO BE REMOVED
	DIRECTION OF FLOW
	BOTTOM OF PIPE TAKE-OFF CONNECTION
	PIPE RISE OR UP THRU SLAB
	PIPE DROP OR DOWN THRU SLAB
	TOP OF PIPE TAKE-OFF CONNECTION
	NIPPLE & CAP AUXILIARY DRAIN
	PRESSURE GAUGE
	UNION
	TEST VALVE & DRAIN
	OUTSIDE SCREW & YOKE VALVE (OS&Y)
	CONCENTRIC REDUCER
	ECCENTRIC REDUCER
	PRESSURE REDUCING VALVE
	OUTSIDE SCREW & YOKE (OS&Y) W/ TAMPER SWITCH
	CHECK VALVE
	HOSE VALVE
	FLOW SWITCH
	TAMPER SWITCH
	POINT OF NEW CONNECTION TO EXISTING
	TYPICAL
	EL ELEVATION ABOVE FINISHED FLOOR
	SPRINKLER NODE

- NOTES:**
- CONTACT AND COORDINATE WITH THE BUILDING SUPERVISOR TO SCHEDULE SCOPE OF WORK AREAS. CONTRACTOR SHALL REVIEW FIELD CONDITIONS AND ASSESS ALL MATERIALS, EQUIPMENT, CLEARANCES, ETC REQUIRED TO PROVIDE A SAFE AND FUNCTIONAL SYSTEM PER LOCAL AND GOVERNING CODES.
 - CONTRACTOR TO ADJUST ALL NEW SPRINKLER HEADS TO MATCH THE PROPOSED CEILING HEIGHTS. INSTALL SPRINKLER HEADS PER MANUFACTURER RECOMMENDATION, LISTING, AND NFPA-13 STANDARDS.
 - THE CONTRACTOR SHALL BE RESPONSIBLE TO INSPECT AND TEST THE INSTALLATION OF THEIR WORK IN ACCORDANCE WITH CHAPTER 25 BEFORE SCHEDULING INSPECTION.
 - REFER TO BRANCH PIPE SCHEDULE ON SHEET FP-001.
- CODED REQUIREMENTS:**
- 2016 NFPA-13:
- SECTION 6.1.2 RECONDITIONED SPRINKLERS ON A NEW AND/OR EXISTING SYSTEM SHALL NOT BE USED.
- SECTION 6.2.1.1 EXISTING SPRINKLER HEADS REMOVED FROM A FITTING OR WELDED OUTLET SHALL NOT BE REINSTALLED.
- SECTION 8.1 THE SPRINKLER SYSTEM CONSISTING OF, BUT NOT LIMITED TO; PIPING, SPRINKLER HEADS, SYSTEM ATTACHMENTS, ETC. SHALL BE INSTALLED AS PER THIS SECTION.
- SECTION 8.3.3.2 WHERE QUICK-RESPONSE SPRINKLERS ARE TO BE INSTALLED OR EXISTING TO REMAIN WITHIN A COMPARTMENT, THERE SHALL BE LISTED QUICK-RESPONSE SPRINKLERS THROUGHOUT THE ENTIRE COMPARTMENT.
- SECTION 8.5.6.1 A MINIMUM 18" CLEARANCE SHALL BE PROVIDED BETWEEN SPRINKLER HEAD AND TOP OF STORAGE OR CONTENTS.
- SECTION 25.2 A NEW SPRINKLER SYSTEM SHALL BE ISOLATED AND TESTED PER REQUIREMENTS OF THIS SECTION.

AS PER USA CONGRESS ARCHITECTURAL WORKS COPYRIGHT PROTECTION ACT OF 1990 ALL IDEAS AND DESIGNS INCLUDING DERIVATIVES THEREOF, ALL DRAWINGS AND SPECIFICATIONS CONSTITUTE THE ORIGINAL COPYRIGHT WORK BY FULLER AND DANKELO, P.C. (F&D). THE DRAWINGS AND SPECIFICATIONS AS INSTRUMENTS OF SERVICE BY F&D ARE CREATED BY F&D FOR THIS PROJECT ONLY AND REMAIN THE PRODUCT AND PROPERTY OF F&D. ANY REPRODUCTION WITHOUT THE PRIOR CONSENT OF F&D IS PROHIBITED.



48 SHELLEWOOD ROAD ELLENBURGH NEW YORK 10889
TEL: 914.898.4444 FAX: 914.898.1717
Copyright 2023 by Ryan Robert Fuller & Daniel DankeLO, P.C.

FULLER
D'ANGELO
P.C.
ARCHITECTS
PLANNERS

LFG
LANDMARK
FACILITIES
GROUP, INC.
252 East Avenue
PO BOX 400
ROCKY HILL, CT 06067
(203) 866-4020
(203) 866-4019 Fax

LICENSE EXP. DATE: 03-31-2026

S.E.D. CONTROL NUMBER:
48-06-01-06-0-001-026

PROJECT TITLE BREWSTER CENTRAL SCHOOL DISTRICT C.V. STARR INTERMEDIATE SCHOOL RENOVATIONS & RELATED WORK 20 FARM TO MARKET ROAD BREWSTER, NY 10509	
DRAWING TITLE GROUND FLOOR FIRE PROTECTION PLAN	BID
12-09-2024	ADDENDUM 1
09-26-2024	SED SUBMISSION
03-05-2024	D.D. SUBMISSION
11-29-2023	S.D. SUBMISSION
08-31-2023	ISSUED TO
DATE	ISSUED TO
SHEET SIZE 30"x42"	DRAWING NO. CVS FP100
SCALE AS NOTED	FILE NO. 23505.02
DRAWN BY LFG	