

C:\Users\collura\Documents\188-2301_ISAAC_E_YOUNG_MS_collura\XARE.rvt



2 TYP. DEMOLITION INTERIOR ELEVATION
AD105 1/4" = 1'-0"

1 AREA 'B' GROUND DEMOLITION PLAN -
AD105 3/32" = 1'-0"

GENERAL NOTES

- COORDINATE ALL REMOVALS WITH NEW CONSTRUCTION.
- PATCH AND REPLACE EXISTING AND NEWLY CREATED HOLES IN WALLS (DUE TO REMOVAL) WITH MATERIALS TO MATCH EXISTING CONSTRUCTION.
- SALVAGED ITEMS SHALL BE TURNED OVER TO OWNER. UNO
- ALL KEYED REMOVALS SHALL INCLUDE REMOVAL OF ANY AND ALL ANCHORING SYSTEMS INCLUDING OBJECTS EMBEDDED INTO EXISTING WALLS.
- REFER TO ASBESTOS AND MEP DRAWINGS FOR ADDITIONAL REMOVAL INFORMATION.
- PROVIDE TEMPORARY SHORING AS NECESSARY AT ALL AREAS OF WALL REMOVAL AND NEW WALL PENETRATIONS.
- DRILL CORNERS OF ALL NEW SAWCUT OPENING PRIOR TO SAWCUTTING, TO PREVENT CUTTING INTO SCHEDULED CONSTRUCTION TO REMAIN.

KEYNOTES

#	DESCRIPTION
W.10	REMOVE PORTION OF MASONRY WALL CONSTRUCTION AS REQUIRED TO ALLOW FOR NEW DUCTWORK. COORDINATE WITH 'M' DRAWINGS.

19 Front St., Newburgh - New York 12550-7601
845-561-13179 www.csarchitect.com

CSARCH

CITY SCHOOL DISTRICT OF NEW ROCHELLE
ISAAC E YOUNG MIDDLE SCHOOL
2023 CAPITAL PROJECT - PHASE 2B

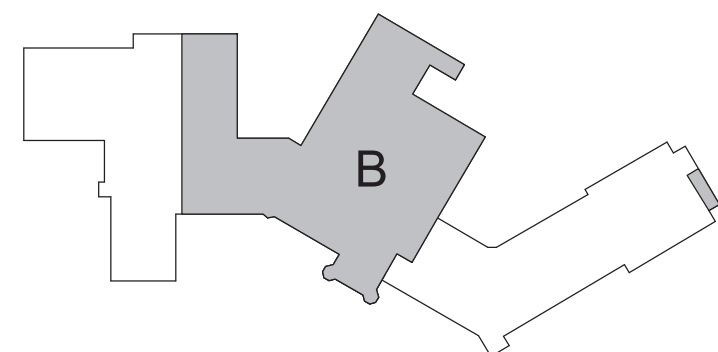
Project Title



DATE	DESCRIPTION

Drawn By: MS
Checked By: MZ
Proj. #: 66-11-00-81-0-003-018
CSArch Proj. #: 188-2301.02
Issued for Bid: 06/13/2025

KEY PLAN



AREA 'B' -
PARTIAL
GROUND
FLOOR DEMO
PLAN

Sheet No.
**IEYMS
AD105**

CONSTRUCTION DOCUMENTS

COPYRIGHT © ALL RIGHTS RESERVED

CONSTRUCTION DOCUMENTS

GENERAL NOTES	
1.	COORDINATE ALL REMOVALS WITH NEW CONSTRUCTION.
2.	PATCH AND REPLACE EXISTING AND NEWLY CREATED HOLES IN WALLS (DUE TO REMOVAL) WITH MATERIALS TO MATCH EXISTING CONSTRUCTION.
3.	SALVAGED ITEMS SHALL BE TURNED OVER TO OWNER, UNO
4.	ALL KEY REMOVALS SHALL INCLUDE REMOVAL OF ANY AND ALL ANCHORING SYSTEMS INCLUDING OBJECTS EMBEDDED INTO EXISTING WALLS.
5.	REFER TO ASBESTOS AND MEP DRAWINGS FOR ADDITIONAL REMOVAL INFORMATION.
6.	PROVIDE TEMPORARY SHORING AS NECESSARY AT ALL AREAS OF WALL REMOVAL AND NEW WALL PENETRATIONS. DRILL CORNERS OF ALL NEW SAWCUT PRIORITY PRIOR TO SAWCUTTING, TO PREVENT CUTTING INTO SCHEDULED CONSTRUCTION TO REMAIN.
KEYNOTES	
#	DESCRIPTION
A.1	REMOVE WALL MOUNTED EQUIPMENT, INCLUDING BUT NOT LIMITED TO ALL WHITEBOARDS, CHALKBOARDS, TACKBOARDS, MAILBOXES, PROTECTION SCREENS AND HUNG DOORS. PATCH REMOVAL CONSTRUCTION AREAS AS REQUIRED TO MATCH EXISTING ADJACENT FINISHES.
A.2	REMOVE CASEWORK IN ITS ENTIRETY, INCLUDING ALL BLOCKING, FASTENERS, AND BARE REFER TO ELECTRICAL AND PLUMBING DRAWINGS FOR ADDITIONAL REMOVAL.
A.19	REMOVE AND SALVAGE EXISTING LOCKERS TO BE REINSTALLED.
D.1	REMOVE DOOR, HARDWARE, AND FRAME IN ITS ENTIRETY.
W.10	REMOVE PORTION OF MASONRY WALL CONSTRUCTION AS REQUIRED TO ALLOW FOR NEW DUCTWORK. COORDINATE WITH 'M' DRAWINGS.
W.24	REMOVE PORTION OF PARTITION CONSTRUCTION AS REQUIRED TO ALLOW FOR NEW DUCTWORK. COORDINATE WITH 'M' DRAWINGS.

C:\Users\collura\Documents\189-2301_ISAAC_E_YOUNG_MS_collura\XARE.rvt



1 AREA 'C' FIRST FLOOR DEMOLITION PLAN -
AD116 3/32" = 1'-0"

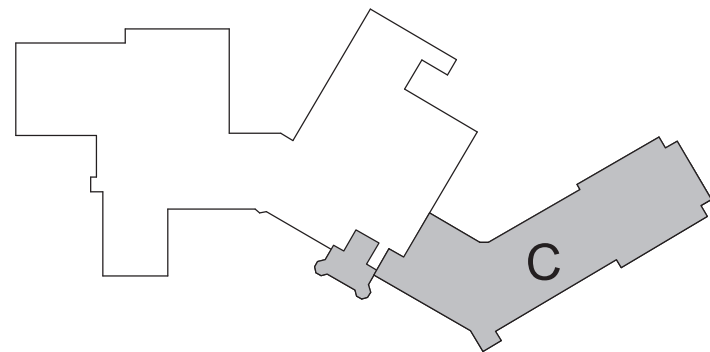
GENERAL NOTES

- COORDINATE ALL REMOVALS WITH NEW CONSTRUCTION.
- PATCH AND REPLACE EXISTING AND NEWLY CREATED HOLES IN WALLS (DUE TO REMOVAL) WITH MATERIALS TO MATCH EXISTING CONSTRUCTION.
- SALVAGED ITEMS SHALL BE TURNED OVER TO OWNER. UNO
- ALL KEYED REMOVALS SHALL INCLUDE REMOVAL OF ANY AND ALL ANCHORING SYSTEMS INCLUDING OBJECTS EMBEDDED INTO EXISTING WALLS.
- REFER TO ASBESTOS AND MEP DRAWINGS FOR ADDITIONAL REMOVAL INFORMATION.
- PROVIDE TEMPORARY SHORING AS NECESSARY AT ALL AREAS OF WALL REMOVAL AND NEW WALL PENETRATIONS.
- DRILL CORNERS OF ALL NEW SAWCUT OPENING PRIOR TO SAWCUTTING, TO PREVENT CUTTING INTO SCHEDULED CONSTRUCTION TO REMAIN.

KEYNOTES

#	DESCRIPTION
A.19	REMOVE AND SALVAGE EXISTING LOCKERS TO BE REINSTALLED.
W.10	REMOVE PORTION OF MASONRY WALL CONSTRUCTION AS REQUIRED TO ALLOW FOR NEW DUCTWORK. COORDINATE WITH 'M' DRAWINGS.
W.24	REMOVE PORTION OF PARTITION CONSTRUCTION AS REQUIRED TO ALLOW FOR NEW DUCTWORK. COORDINATE WITH 'M' DRAWINGS.

KEY PLAN



19 Front St., Newburgh, New York 12550-7601
845.561.1317 www.csarchitect.com

CSARCH

CITY SCHOOL DISTRICT OF NEW ROCHELLE
ISAAC E YOUNG MIDDLE SCHOOL
2023 CAPITAL PROJECT - PHASE 2B

Project Title



DATE	DESCRIPTION

Drawn By:	Author:
Checked By:	Checker:
Proj. #:	66-11-00-81-0-003-018
CSArch Proj. #:	188-2301.02
Issued for Bid:	06/13/2025

Sheet Title

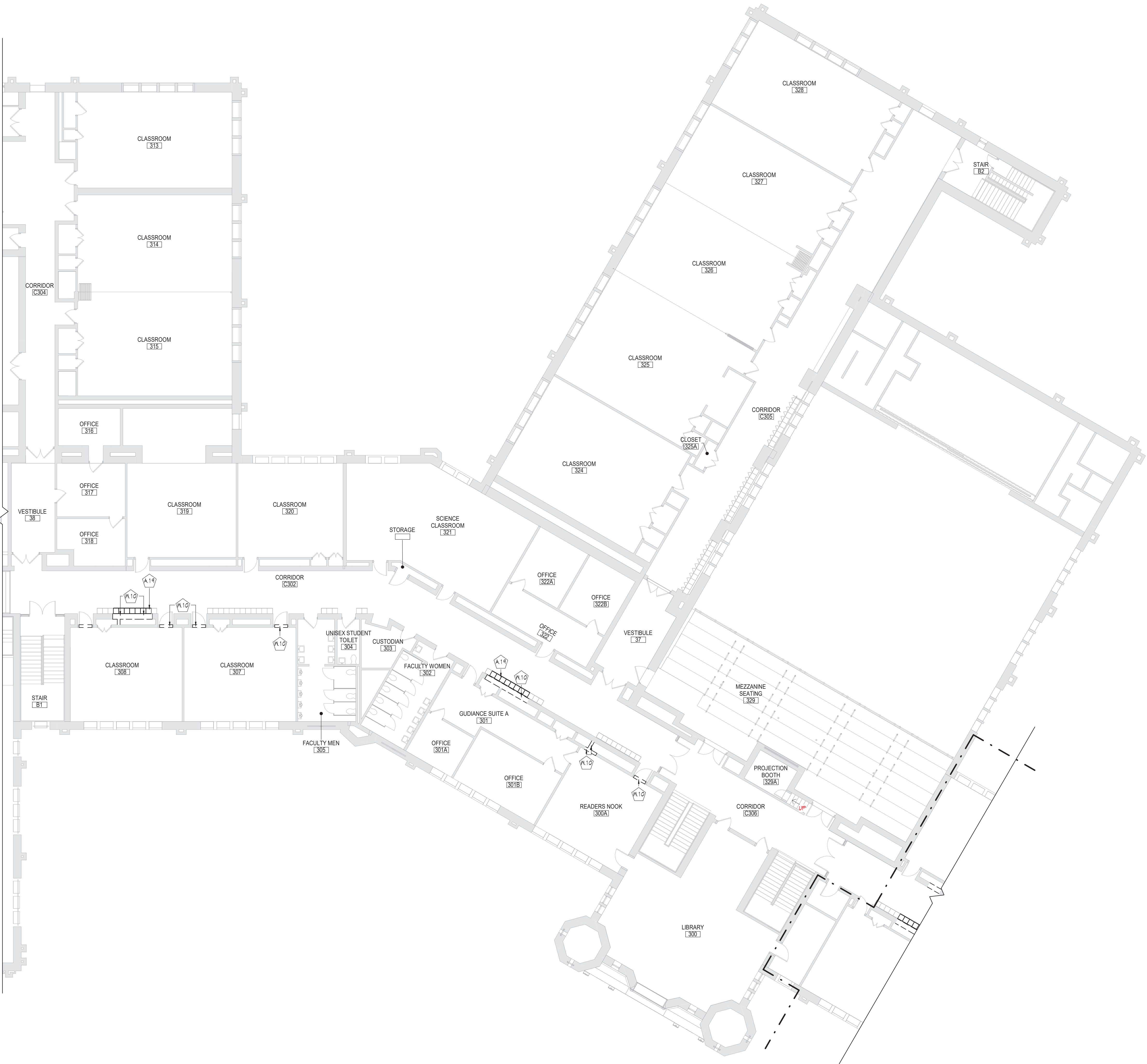
AREA 'C' -
PARTIAL FIRST
FLOOR DEMO
PLAN

Sheet No.

IEYMS
AD116

CONSTRUCTION DOCUMENTS

COPYRIGHT © ALL RIGHTS RESERVED



1 AREA 'B' SECOND FLOOR DEMOLITION PLAN - AD125 3/32" = 1'-0"

GENERAL NOTES	
1.	COORDINATE ALL REMOVALS WITH NEW cONSTRUCTION.
2.	PATCH AND REPLACE EXISTING AND NEWLY CREATED HOLES IN WALLS (DUE TO REMOVAL) WITH MATERIALS TO MATCH EXISTING CONSTRUCTION.
3.	SALVAGED ITEMS SHALL BE TURNED OVER TO OWNER. UNO
4.	ALL KEYED REMOVALS SHALL INCLUDE REMOVAL OF ANY AND ALL ANCHORING SYSTEMS INCLUDING OBJECTS EMBEDDED INTO EXISTING WALLS.
5.	REFER TO ASBESTOS AND MEP DRAWINGS FOR ADDITIONAL REMOVAL INFORMATION.
6.	PROVIDE TEMPORARY SHORING AS NECESSARY AT ALL AREAS OF WALL REMOVAL AND NEW WALL PENETRATIONS.
7.	DRILL CORNERS OF ALL NEW SAWCUT OPENING PRIOR TO SAWCUTTING, TO PREVENT CUTTING INTO SCHEDULED CONSTRUCTION TO REMAIN.

KEYNOTES	
#	DESCRIPTION
A.19	REMOVE AND SALVAGE EXISTING LOCKERS TO BE REINSTALLED.
W.10	REMOVE PORTION OF MASONRY WALL CONSTRUCTION AS REQUIRED TO ALLOW FOR NEW DUCTWORK. COORDINATE WITH 'M' DRAWINGS.

KEY PLAN

AREA 'B' - PARTIAL SECOND FLOOR DEMO PLAN

19 Front St., Newburgh, New York 12550-7601
845.561.1317 www.csarch.com

CSARCH

Project Title

CITY SCHOOL DISTRICT OF NEW ROCHELLE
ISAAC E YOUNG MIDDLE SCHOOL
2023 CAPITAL PROJECT - PHASE 2B

DATE DESCRIPTION

Drawn By: _____

Checked By: _____

Proj. #: 66-11-00-81-0-003-018

CSArch Proj. #: 188-2301.02

Issued for Bid: 06/13/2025

Sheet Title

AREA 'B' - PARTIAL SECOND FLOOR DEMO PLAN

Sheet No.

IEYMS AD125

CONSTRUCTION DOCUMENTS

C:\Users\collura\Documents\189-2301_ISAAC_E_YOUNG_MS_collura\XARE.vrt



1 AREA 'C' SECOND FLOOR DEMOLITION PLAN -
AD126 3/32" = 1'-0"

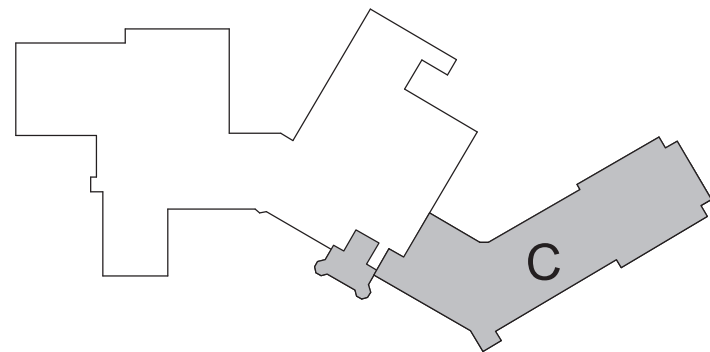
GENERAL NOTES

1. COORDINATE ALL REMOVALS WITH NEW CONSTRUCTION.
2. PATCH AND REPLACE EXISTING AND NEWLY CREATED HOLES IN WALLS (DUE TO REMOVAL) WITH MATERIALS TO MATCH EXISTING CONSTRUCTION.
3. SALVAGED ITEMS SHALL BE TURNED OVER TO OWNER. UNO
4. ALL KEYED REMOVALS SHALL INCLUDE REMOVAL OF ANY AND ALL ANCHORING SYSTEMS INCLUDING OBJECTS EMBEDDED INTO EXISTING WALLS.
5. REFER TO ASBESTOS AND MEP DRAWINGS FOR ADDITIONAL REMOVAL INFORMATION.
6. PROVIDE TEMPORARY SHORING AS NECESSARY AT ALL AREAS OF WALL REMOVAL AND NEW WALL PENETRATIONS.
7. DRILL CORNERS OF ALL NEW SAWCUT OPENING PRIOR TO SAWCUTTING, TO PREVENT CUTTING INTO SCHEDULED CONSTRUCTION TO REMAIN.

KEYNOTES

#	DESCRIPTION
A.19	REMOVE AND SALVAGE EXISTING LOCKERS TO BE REINSTALLED.
W.10	REMOVE PORTION OF MASONRY WALL CONSTRUCTION AS REQUIRED TO ALLOW FOR NEW DUCTWORK. COORDINATE WITH 'M' DRAWINGS.
W.24	REMOVE PORTION OF PARTITION CONSTRUCTION AS REQUIRED TO ALLOW FOR NEW DUCTWORK. COORDINATE WITH 'M' DRAWINGS.

KEY PLAN



19 Front St., Newburgh, New York 12550-7601
845-561-13179 www.csarchitect.com

CSARCH

Consultant

CITY SCHOOL DISTRICT OF NEW ROCHELLE
ISAAC E YOUNG MIDDLE SCHOOL
2023 CAPITAL PROJECT - PHASE 2B

Project Title



DATE	DESCRIPTION

Drawn By: _____
Checked By: _____
Proj. #: 66-11-00-81-0-003-018
CSArch Proj. #: 188-2301.02
Issued for Bid: 06/13/2025

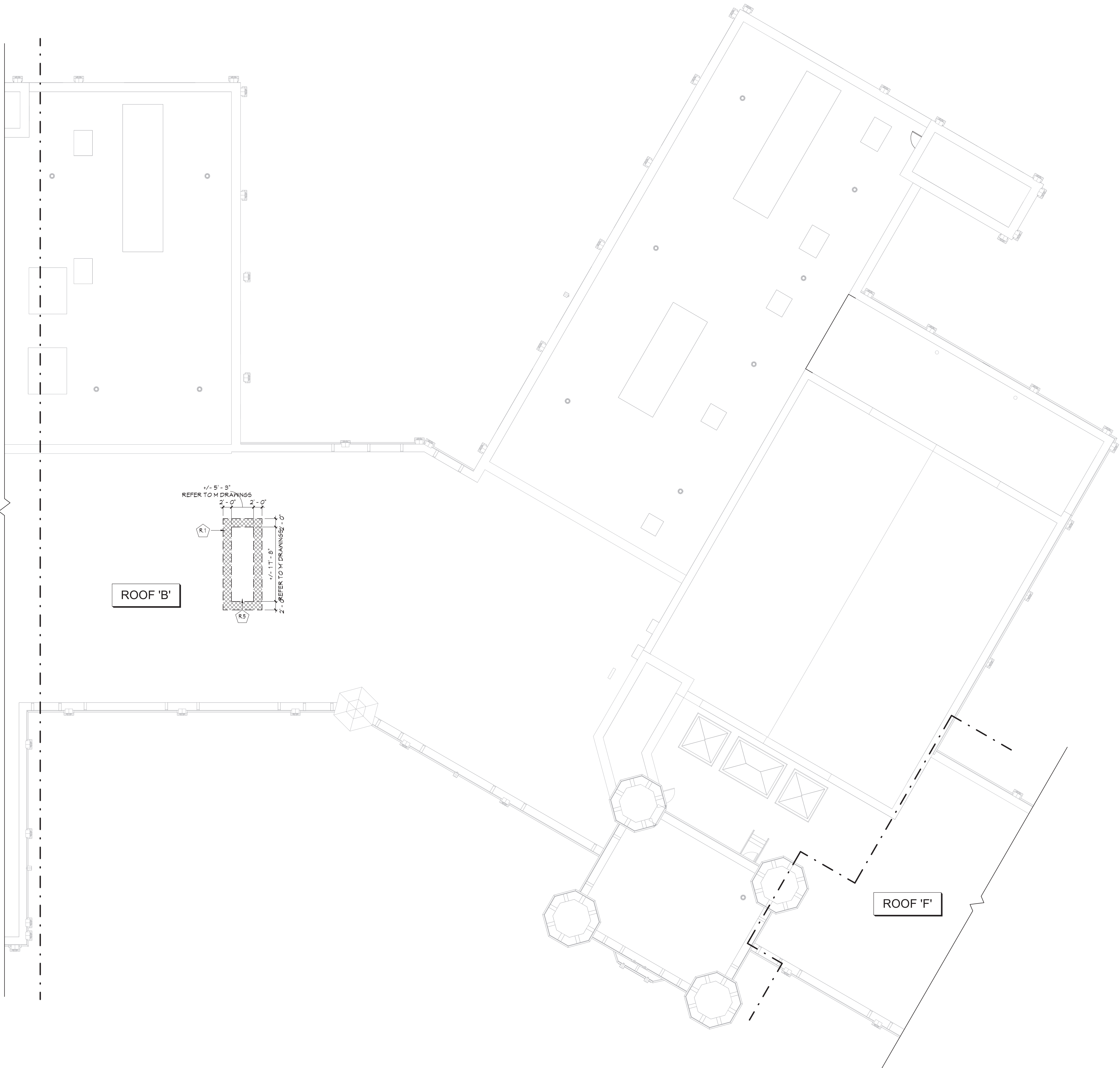
Sheet Title
AREA 'C' -
PARTIAL
SECOND
FLOOR DEMO
PLAN

Sheet No.
IEYMS
AD126

CONSTRUCTION DOCUMENTS

COPYRIGHT © ALL RIGHTS RESERVED

C:\Users\collura\Documents\188-2001_ISAAC_E_YOUNG_MS_collura\XARE.rvt



1 AREA 'B' - ROOF DEMO PLAN
AD402 3/32" = 1'-0"

DEMOLITION GENERAL NOTES

1. COORDINATE ALL REMOVALS WITH NEW CONSTRUCTION.
2. PATCH AND REPLACE EXISTING AND NEWLY CREATED HOLES IN WALLS OR ROOF (DUE TO REMOVAL) WITH MATERIALS TO MATCH EXISTING CONSTRUCTION.
3. SALVAGED ITEMS SHALL BE TURNED OVER TO OWNER, UNO
4. ALL KEYED REMOVALS SHALL INCLUDE REMOVAL OF ANY AND ALL ANCHORING SYSTEMS INCLUDING OBJECTS EMBEDDED INTO EXISTING WALLS.
5. REMOVE EXISTING ROOF MATERIAL AND INSULATION DOWN TO EXISTING ROOF DECK, UNO
6. EXISTING CURBS, VENTS, AND OTHER PENETRATION SIZES AND LOCATIONS ARE APPROXIMAT. CONTRACTOR SHALL VERIFY IN FIELD AND COORDINATE AS REQUIRED PRIOR TO BID.
7. COORDINATE WITH ABATEMENT DRAWINGS
8. COORDINATE WITH STRUCTURAL, MECHANICAL, PLUMBING, AND ELECTRICAL DRAWINGS.

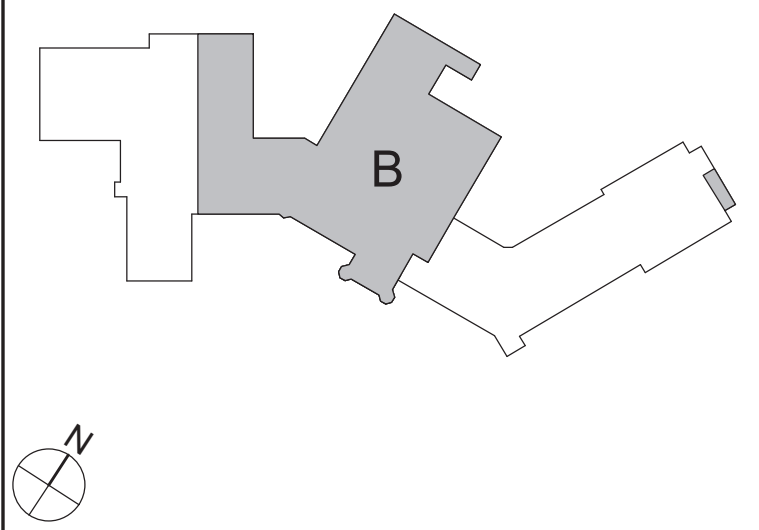
ROOF LEGEND

- ROOF DRAIN
- CONDENSING UNIT
- EXHAUST FAN
- ROOF HOOD
- EXISTING ROOFING TO BE REMOVED

KEYNOTES

#	DESCRIPTION
R.1	REMOVE ENTIRE ROOF ASSEMBLY TO DECK BELOW, PREP SLAB FOR NEW ROOF ASSEMBLY, COORDINATE WITH NEW WORK.
R.5	REMOVE PORTION OF EXISTING ROOF SYSTEM INCLUDING ROOF DECKING TO PROVIDE A NEW ROOF OPENING TO ACCOMMODATE MECHANICAL WORK. REFER TO MEP DRAWINGS.

KEY PLAN



19 Front St., Newburgh, New York 12550-7601
845.561.1317 www.csarch.com

Consultant

CITY SCHOOL DISTRICT OF NEW ROCHELLE
ISAAC E YOUNG MIDDLE SCHOOL
2023 CAPITAL PROJECT - PHASE 2B

Project Title



DATE	DESCRIPTION

Drawn By:	Author:
Checked By:	Checker:
Proj. #:	66-11-00-81-0-003-018
CSArch Proj. #:	188-2301.02
Issued for Bid:	06/13/2025

Sheet Title

AREA 'B' -
PARTIAL ROOF
DEMOLITION
PLAN

Sheet No.

IEYMS
AD402

CONSTRUCTION DOCUMENTS

COPYRIGHT © ALL RIGHTS RESERVED

CSARCH

Consultant

CITY SCHOOL DISTRICT OF NEW ROCHELLE
ISAAC E YOUNG MIDDLE SCHOOL
2023 CAPITAL PROJECT - PHASE 2B

Project Title



	DATE	DESCRIPTION

Drawn By:	Author
Checked By:	Checker
Proj. #:	66-11-00-01-0-003-018
CSArch Proj. #:	188-2301.02
Issued for Bid:	06/13/2025




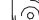

Sheet Title

AREA 'C' -
PARTIAL ROOF
DEMOLITION
PLAN

Sheet No. IEYMS
AD403

CONSTRUCTION DOCUMENTS

ROOF LEGEND	
-------------	--

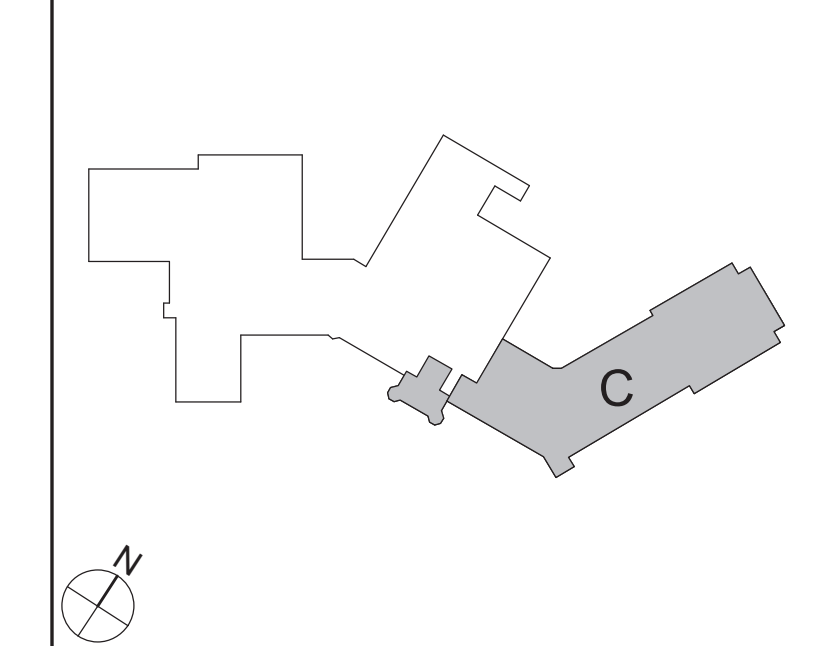
 R ROOF DRAIN
 CU CONDENSING UNIT
 E EXHAUST FAN
 R ROOF HOOD
 EXISTING ROOFING TO BE REMOVED

KEYNOTES

#	DESCRIPTION
R.1	REMOVE ENTIRE ROOF ASSEMBLY TO DECK BELOW, PREP SLAB FOR NEW ROOF ASSEMBLY, COORDINATE WITH NEW WORK.
R.5	REMOVE PORTION OF EXISTING ROOF SYSTEM INCLUDING ROOF DECKING TO PROVIDE A NEW ROOF OPENING TO ACCOMMODATE MECHANICAL WORK. REFER TO MEP DRAWINGS.

1 AREA 'C' - ROOF DEMOLITION PLAN

KEY PLAN



COPYRIGHT © ALL RIGHTS RESERVED

C:\Users\collura\Documents\189-2301_ISAAC_E_YOUNG_MS_collura\XARE.rvt



1 AREA 'B' - GROUND FLOOR DEMOLITION RCP
AD802 3/32" = 1'-0"

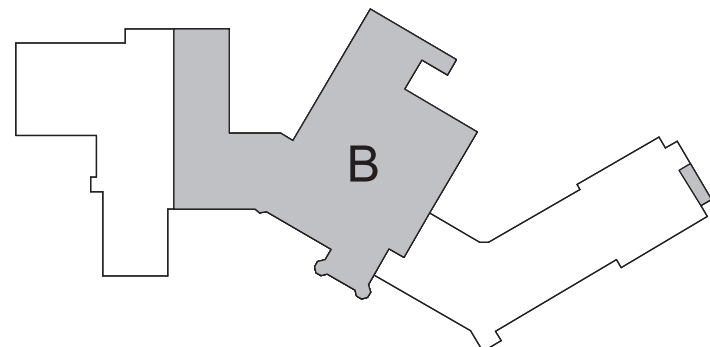
GENERAL NOTES

- COORDINATE ALL REMOVALS WITH NEW CONSTRUCTION.
- PATCH AND REPLACE EXISTING AND NEWLY CREATED HOLES IN WALLS (DUE TO REMOVAL) WITH MATERIALS TO MATCH EXISTING CONSTRUCTION.
- SALVAGED ITEMS SHALL BE TURNED OVER TO OWNER, UNO
- ALL KEYED REMOVALS SHALL INCLUDE REMOVAL OF ANY AND ALL ANCHORING SYSTEMS INCLUDING OBJECTS EMBEDDED INTO EXISTING WALLS.
- REFER TO ASBESTOS AND MEP DRAWINGS FOR ADDITIONAL REMOVAL INFORMATION.
- PROVIDE TEMPORARY SHORING AS NECESSARY AT ALL AREAS OF WALL REMOVAL AND NEW WALL PENETRATIONS. DRILL CORNERS OF ALL NEW SAWCUT OPENING PRIOR TO SAWCUTTING, TO PREVENT CUTTING INTO SCHEDULED CONSTRUCTION TO REMAIN.
- DRILL CORNERS OF ALL NEW SAWCUT OPENING PRIOR TO SAWCUTTING, TO PREVENT CUTTING INTO SCHEDULED CONSTRUCTION TO REMAIN.

KEYNOTES

#	DESCRIPTION
C.4	REMOVE AND SALVAGE EXISTING SUSPENDED CEILING PANELS FOR REINSTALLATION. SUSPENDED CEILING GRID SYSTEM TO REMAIN IN ITS ENTIRETY.
W.10	REMOVE PORTION OF MASONRY WALL CONSTRUCTION AS REQUIRED TO ALLOW FOR NEW DUCTWORK. COORDINATE WITH 'M' DRAWINGS.

KEY PLAN



19 Front St., Newburgh, New York 12550-7601
845.561.13179 www.csarchitect.com

CSARCH

CITY SCHOOL DISTRICT OF NEW ROCHELLE ISAAC E YOUNG MIDDLE SCHOOL 2023 CAPITAL PROJECT - PHASE 2B

Project Title



DATE	DESCRIPTION

Drawn By:	Author:
Checked By:	Checker:
Proj. #:	66-11-00-81-0-003-018
CSArch Proj. #:	188-2301.02
Issued for Bid:	06/13/2025

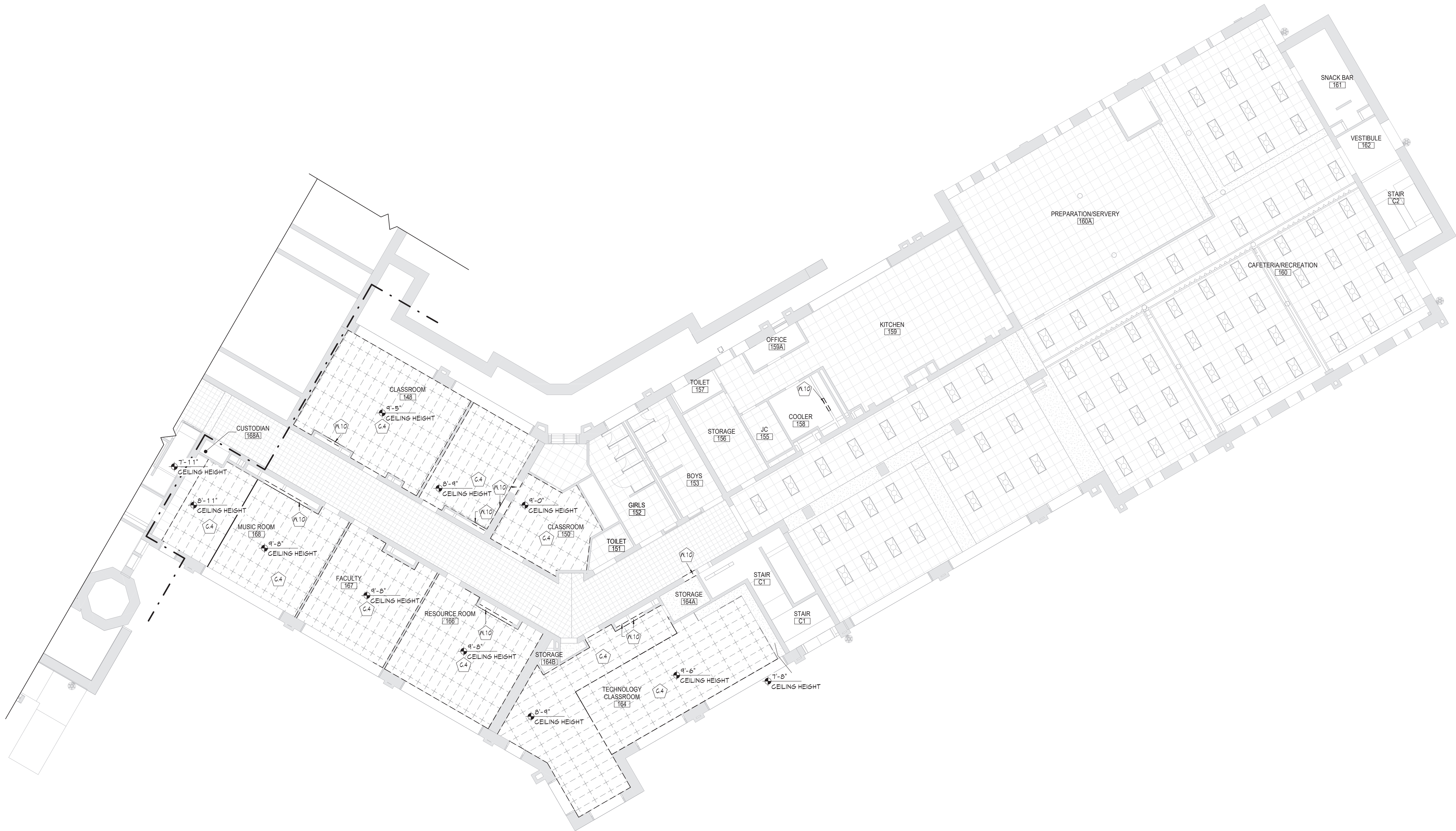
Sheet Title
AREA 'B' -
PARTIAL
GROUND
FLOOR DEMO
RCP

Sheet No.
IEYMS
AD802

CONSTRUCTION DOCUMENTS

COPYRIGHT © ALL RIGHTS RESERVED

C:\Users\collura\Documents\188-2301_ISAAC_E YOUNG_MS_collura\XARE.rvt



1 AREA 'C' - GROUND FLOOR DEMOLITION RCP
AD803 3/32" = 1'-0"

GENERAL NOTES	
1. COORDINATE ALL REMOVALS WITH NEW CONSTRUCTION.	
2. PATCH AND REPLACE EXISTING AND NEWLY CREATED HOLES IN WALLS (DUE TO REMOVAL) WITH MATERIALS TO MATCH EXISTING CONSTRUCTION.	
3. SALVAGED ITEMS SHALL BE TURNED OVER TO OWNER. UNO	
4. ALL KEYED REMOVALS SHALL INCLUDE REMOVAL OF ANY AND ALL ANCHORING SYSTEMS INCLUDING OBJECTS EMBEDDED INTO EXISTING WALLS.	
5. REFER TO ASBESTOS AND MEP DRAWINGS FOR ADDITIONAL REMOVAL INFORMATION.	
6. PROVIDE TEMPORARY SHORING AS NECESSARY AT ALL AREAS OF WALL REMOVAL AND NEW WALL PENETRATIONS.	
7. DRILL CORNERS OF ALL NEW SAWCUT OPENING PRIOR TO SAWCUTTING, TO PREVENT CUTTING INTO SCHEDULED CONSTRUCTION TO REMAIN.	

KEYNOTES	
#	DESCRIPTION
C.4	REMOVE AND SALVAGE EXISTING SUSPENDED CEILING PANELS FOR REINSTALLATION. SUSPENDED CEILING GRID SYSTEM TO REMAIN IN ITS ENTIRETY.
W.10	REMOVE PORTION OF MASONRY WALL. CONSTRUCTION AS REQUIRED TO ALLOW FOR NEW DUCTWORK. COORDINATE WITH 'M' DRAWINGS.

KEY PLAN

Consultant

CITY SCHOOL DISTRICT OF NEW ROCHELLE
ISAAC E YOUNG MIDDLE SCHOOL
2023 CAPITAL PROJECT - PHASE 2B

DATE	DESCRIPTION

Drawn By: _____
Checked By: _____
Proj. #: 66-11-00-81-0-003-018
CSArch Proj. #: 188-2301.02
Issued for Bid: 06/13/2025

Sheet Title
AREA 'C' -
PARTIAL
GROUND
FLOOR DEMO
RCP

Sheet No.
IEYMS
AD803

CONSTRUCTION DOCUMENTS



NOTES: PLASTER CEILING ABOVE
EXISTING ACT CEILING TO BE REMOVED.

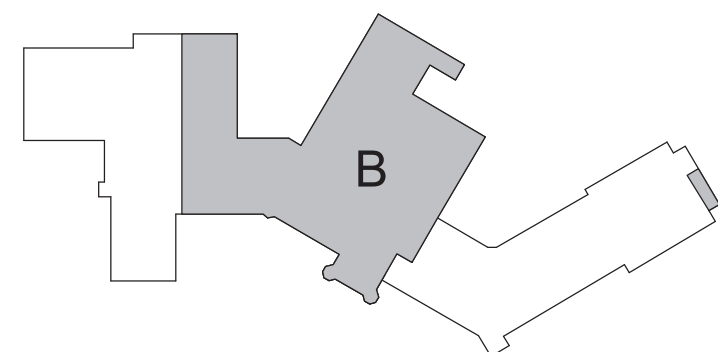
1 AREA 'B' - FIRST FLOOR DEMOLITION RCP

GENERAL NOTES

1. COORDINATE ALL REMOVALS WITH NEW CONSTRUCTION.
2. PATCH AND REPLACE EXISTING AND NEWLY CREATED HOLES IN WALLS (DUE TO REMOVAL) WITH MATERIALS TO MATCH EXISTING CONSTRUCTION.
3. SALVAGED ITEMS SHALL BE TURNED OVER TO OWNER. UNO
4. ALL KEYED REMOVALS SHALL INCLUDE REMOVAL OF ANY AND ALL ANCHORING SYSTEMS INCLUDING OBJECTS EMBEDDED INTO EXISTING WALLS.
5. REFER TO ASBESTOS AND MEP DRAWINGS FOR ADDITIONAL REMOVAL INFORMATION.
6. PROVIDE TEMPORARY SHORING AS NECESSARY AT ALL AREAS OF WALL REMOVAL AND NEW WALL PENETRATIONS.
7. DRILL CORNERS OF ALL NEW SAWCUT OPENING PRIOR TO SAWCUTTING, TO PREVENT CUTTING INTO SCHEDULED CONSTRUCTION TO REMAIN.

KEYNOTES	
#	DESCRIPTION
C-1	REMOVE EXISTING SUSPENDED CEILING SYSTEM IN ITS ENTIRETY, INCLUDING ALL HANGERS AND FASTENERS. REFER TO ELECTRICAL AND MECHANICAL DRAWINGS FOR EQUIPMENT REMOVALS.
W-10	REMOVE PORTION OF MASONRY WALL CONSTRUCTION AS REQUIRED TO ALLOW FOR NEW DUCTWORK. COORDINATE WITH "M" DRAWINGS.

KEY PLAN



COPYRIGHT © ALL RIGHTS RESERVED

19 Front St. · Newburgh · New York 12550-7601
845-561-3179 www.csarchpc.com

CS ARCH

Consultant

CITY SCHOOL DISTRICT OF NEW ROCHELLE
ISAAC E YOUNG MIDDLE SCHOOL
2023 CAPITAL PROJECT - PHASE 2B

Project Title



	DATE	DESCRIPTION

Drawn By:	RC
Checked By:	MZ
Proj. #:	66-11-00-01-0-003-018
CSArch Proj. #:	188-2301.02
Issued for Bid:	06/13/2025

Sheet Title

AREA 'B' -
PARTIAL FIRST
FLOOR DEMO
RCP

Sheet No. IEYMS
AD812

CONSTRUCTION DOCUMENTS

C:\Users\collura\Documents\189-2001_ISAAC_E_YOUNG_MS_collura\XARE.rvt



1 AREA 'C' - FIRST FLOOR DEMOLITION RCP
AD813 3/32" = 1'-0"

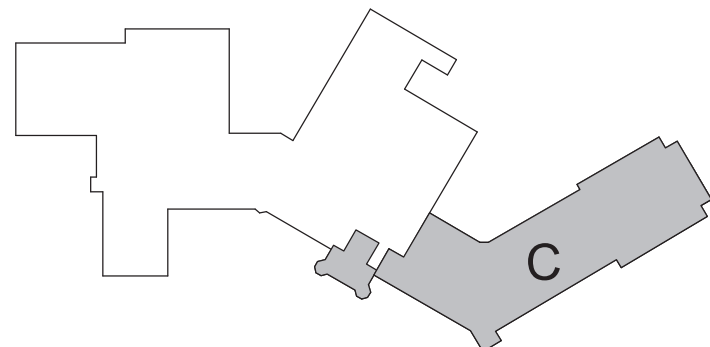
GENERAL NOTES

- COORDINATE ALL REMOVALS WITH NEW CONSTRUCTION.
- PATCH AND REPLACE EXISTING AND NEWLY CREATED HOLES IN WALLS (DUE TO REMOVAL) WITH MATERIALS TO MATCH EXISTING CONSTRUCTION.
- SALVAGED ITEMS SHALL BE TURNED OVER TO OWNER. UNO
- ALL KEYED REMOVALS SHALL INCLUDE REMOVAL OF ANY AND ALL ANCHORING SYSTEMS INCLUDING OBJECTS EMBEDDED INTO EXISTING WALLS.
- REFER TO ASBESTOS AND MEP DRAWINGS FOR ADDITIONAL REMOVAL INFORMATION.
- PROVIDE TEMPORARY SHORING AS NECESSARY AT ALL AREAS OF WALL REMOVAL AND NEW WALL PENETRATIONS.
- DRILL CORNERS OF ALL NEW SAWCUT OPENING PRIOR TO SAWCUTTING, TO PREVENT CUTTING INTO SCHEDULED CONSTRUCTION TO REMAIN.

KEYNOTES

#	DESCRIPTION
C.4	REMOVE AND SALVAGE EXISTING SUSPENDED CEILING PANELS FOR REINSTALLATION. SUSPENDED CEILING GRID SYSTEM TO REMAIN IN ITS ENTIRETY.
W.10	REMOVE PORTION OF MASONRY WALL CONSTRUCTION AS REQUIRED TO ALLOW FOR NEW DUCTWORK. COORDINATE WITH 'M' DRAWINGS.

KEY PLAN



19 Front St., Newburgh, New York 12550-7601
845.561.1317 www.csarchitect.com

CSARCH

CITY SCHOOL DISTRICT OF NEW ROCHELLE
ISAAC E YOUNG MIDDLE SCHOOL
2023 CAPITAL PROJECT - PHASE 2B

Project Title



DATE	DESCRIPTION

Drawn By:	Author
Checked By:	Checker
Proj. #:	66-11-00-81-0-003-018
CSArch Proj. #:	188-2301.02
Issued for Bid:	06/13/2025

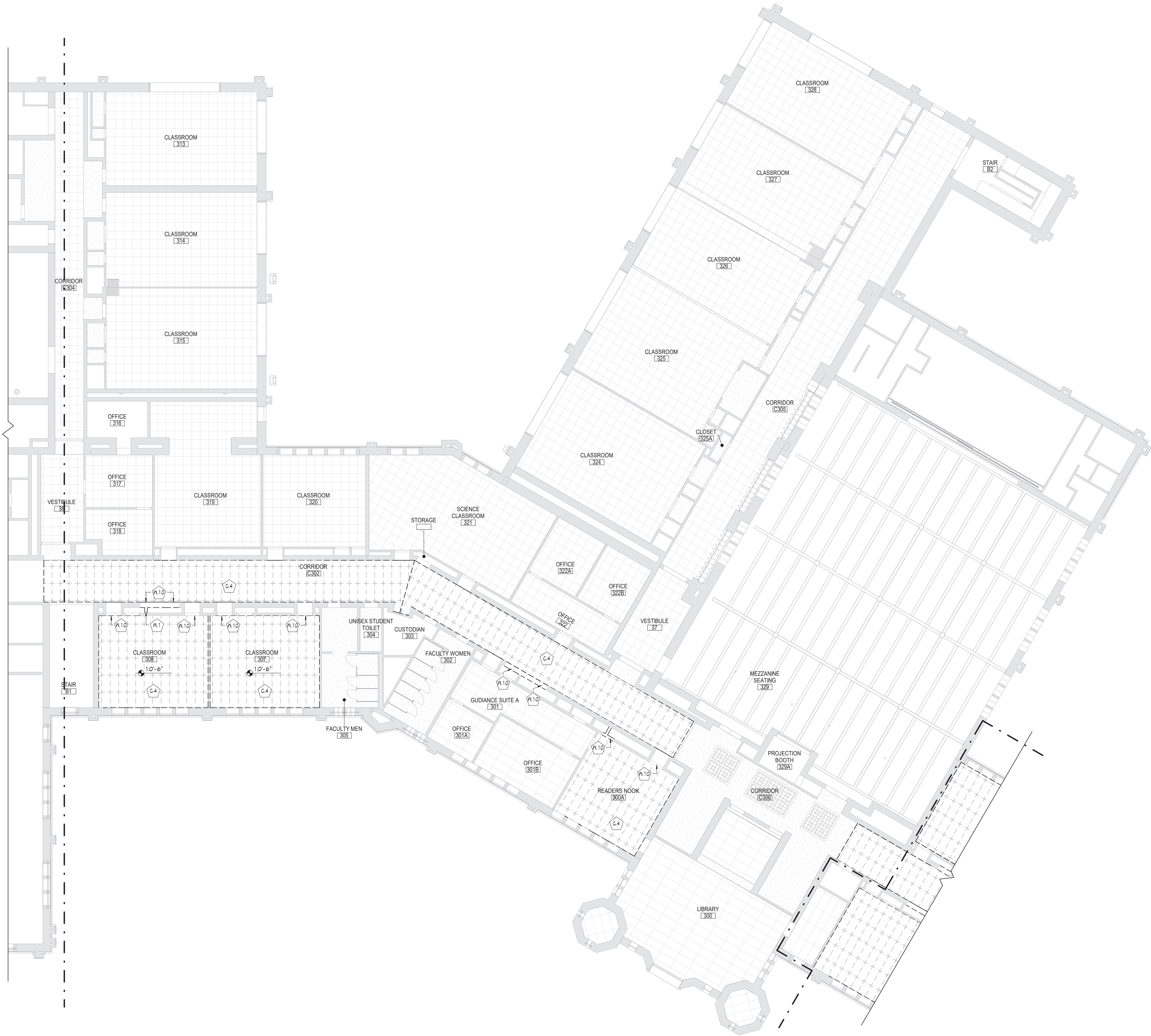
Sheet Title
AREA 'C' -
PARTIAL FIRST
FLOOR DEMO
RCP

Sheet No.
IEYMS
AD813

CONSTRUCTION DOCUMENTS

COPYRIGHT © ALL RIGHTS RESERVED

C:\Users\collura\Documents\189-2301_ISAAC_E_YOUNG_MS_collura\XARE.rvt



1 AREA 'B' - SECOND FLOOR DEMOLITION RCP
AD822 3/32" = 1'-0"

- GENERAL NOTES**
- COORDINATE ALL REMOVALS WITH NEW CONSTRUCTION.
 - PATCH AND REPLACE EXISTING AND NEWLY CREATED HOLES IN WALLS (DUE TO REMOVAL) WITH MATERIALS TO MATCH EXISTING CONSTRUCTION.
 - SALVAGED ITEMS SHALL BE TURNED OVER TO OWNER. UNO
 - ALL KEYED REMOVALS SHALL INCLUDE REMOVAL OF ANY AND ALL ANCHORING SYSTEMS INCLUDING OBJECTS EMBEDDED INTO EXISTING WALLS.
 - REFER TO ASBESTOS AND MEP DRAWINGS FOR ADDITIONAL REMOVAL INFORMATION.
 - PROVIDE TEMPORARY SHORING AS NECESSARY AT ALL AREAS OF WALL REMOVAL AND NEW WALL PENETRATIONS.
 - DRILL CORNERS OF ALL NEW SAWCUT OPENING PRIOR TO SAWCUTTING, TO PREVENT CUTTING INTO SCHEDULED CONSTRUCTION TO REMAIN.

KEYNOTES	
#	DESCRIPTION
C.4	REMOVE AND SALVAGE EXISTING SUSPENDED CEILING PANELS FOR REINSTALLATION. SUSPENDED CEILING GRID SYSTEM TO REMAIN IN ITS ENTIRETY.
W.1	SAWCUT AND REMOVE MASONRY WALL IN ITS ENTIRETY.
W.10	REMOVE PORTION OF MASONRY WALL. CONSTRUCTION AS REQUIRED TO ALLOW FOR NEW DUCTWORK. COORDINATE WITH 'M' DRAWINGS.

KEY PLAN	
AREA 'B' - PARTIAL SECOND FLOOR DEMO RCP	
IEYMS AD822	

19 Front St., Newburgh, New York 12550-7601
845.561.13179 www.csarchitect.com

CSARCH

Consultant

CITY SCHOOL DISTRICT OF NEW ROCHELLE
ISAAC E YOUNG MIDDLE SCHOOL
2023 CAPITAL PROJECT - PHASE 2B

Project Title

DATE	DESCRIPTION

Drawn By:	Author:
Checked By:	Checker:
Proj. #:	66-11-00-81-0-003-018
CSArch Proj. #:	188-2301.02
Issued for Bid:	06/13/2025

Sheet Title

AREA 'B' - PARTIAL SECOND FLOOR DEMO RCP

Sheet No.

IEYMS AD822

CONSTRUCTION DOCUMENTS

C:\Users\collura\Documents\189-2301_ISAAC_E_YOUNG_MS_rollup\XARE.rvt



1 AREA 'C' - SECOND FLOOR DEMOLITION RCP
AD823 3/32" = 1'-0"

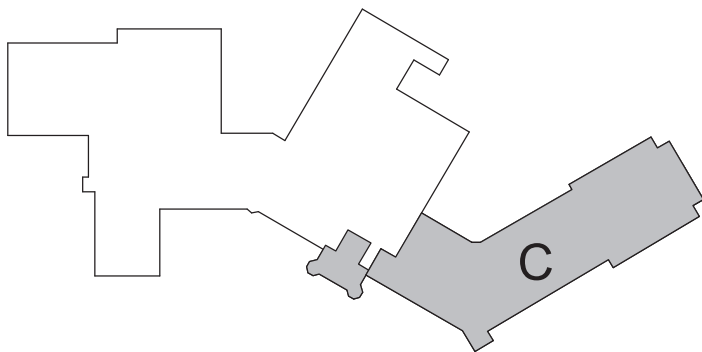
GENERAL NOTES

- COORDINATE ALL REMOVALS WITH NEW CONSTRUCTION.
- PATCH AND REPLACE EXISTING AND NEWLY CREATED HOLES IN WALLS (DUE TO REMOVAL) WITH MATERIALS TO MATCH EXISTING CONSTRUCTION.
- SALVAGED ITEMS SHALL BE TURNED OVER TO OWNER. UNO
- ALL KEYED REMOVALS SHALL INCLUDE REMOVAL OF ANY AND ALL ANCHORING SYSTEMS INCLUDING OBJECTS EMBEDDED INTO EXISTING WALLS.
- REFER TO ASBESTOS AND MEP DRAWINGS FOR ADDITIONAL REMOVAL INFORMATION.
- PROVIDE TEMPORARY SHORING AS NECESSARY AT ALL AREAS OF WALL REMOVAL AND NEW WALL PENETRATIONS.
- DRILL CORNERS OF ALL NEW SAWCUT OPENING PRIOR TO SAWCUTTING, TO PREVENT CUTTING INTO SCHEDULED CONSTRUCTION TO REMAIN.

KEYNOTES

#	DESCRIPTION
C.1	REMOVE EXISTING SUSPENDED CEILING SYSTEM IN ITS ENTIRETY, INCLUDING ALL HANGERS AND FASTENERS. REFER TO ELECTRICAL AND MECHANICAL DRAWINGS FOR EQUIPMENT REMOVALS.
C.4	REMOVE AND SALVAGE EXISTING SUSPENDED CEILING PANELS FOR REINSTALLATION. SUSPENDED CEILING GRID SYSTEM TO REMAIN IN ITS ENTIRETY.
W.1	SAWCUT AND REMOVE MASONRY WALL IN ITS ENTIRETY.
W.10	REMOVE PORTION OF MASONRY WALL CONSTRUCTION AS REQUIRED TO ALLOW FOR NEW DUCTWORK. COORDINATE WITH 'M' DRAWINGS.

KEY PLAN



19 Front St., Newburgh, New York 12550-7601
845.561.1317 www.csarch.com

CSARCH

CITY SCHOOL DISTRICT OF NEW ROCHELLE
ISAAC E YOUNG MIDDLE SCHOOL
2023 CAPITAL PROJECT - PHASE 2B

Project Title



DATE	DESCRIPTION

Drawn By:	Author:
Checked By:	Checker:
Proj. #:	66-11-00-81-0-003-018
CSArch Proj. #:	188-2301.02
Issued for Bid:	06/13/2025

Sheet Title
AREA 'C' -
PARTIAL
SECOND
FLOOR DEMO
RCP

Sheet No.
IEYMS
AD823

CONSTRUCTION DOCUMENTS

COPYRIGHT © ALL RIGHTS RESERVED

C:\Users\collura\Documents\188-2301_ISAAC_E_YOUNG_MS_collura\XARE.rvt



2 TYP. INTERIOR ELEVATION
A105 1/4" = 1'-0"

1 AREA 'B' GROUND FLOOR PLAN
A105 3/32" = 1'-0"

GENERAL NOTES

1. REFER TO SHEET G001 FOR ADDITIONAL GENERAL NOTES.
2. REFER TO SHEET G001 FOR PARTITION TYPES AND ADDITIONAL NOTES.

KEYNOTES

#	DESCRIPTION
W1	INFILL WALL WITH STUD WALL TO MATCH ADJACENT WALL THICKNESS AND FINISH. REFER TO LIFE SAFETY DRAWINGS FOR MORE INFORMATION ON RATED WALLS.
W9	PREP AND PAINT WALL SURFACE IN ITS ENTIRETY.

19 Front St., Newburgh, New York 12550-7601
845.561.5379 www.csarch.com

CSARCH

Consultant

CITY SCHOOL DISTRICT OF NEW ROCHELLE
ISAAC E YOUNG MIDDLE SCHOOL
2023 CAPITAL PROJECT - PHASE 2B

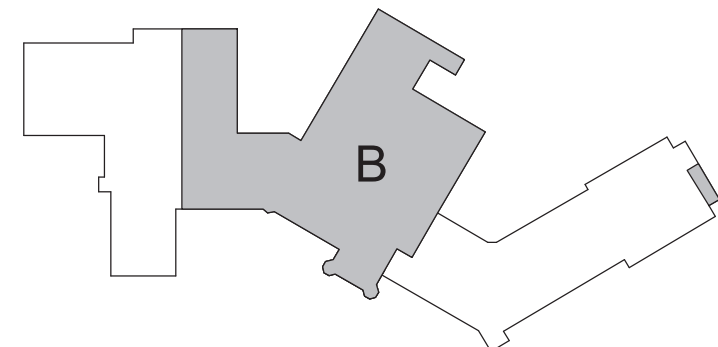
Project Title



DATE	DESCRIPTION

Drawn By: MS
Checked By: MZ
Proj. #: 66-11-00-81-0-003-018
CSArch Proj. #: 188-2301.02
Issued for Bid: 06/13/2025

KEY PLAN



COPYRIGHT © ALL RIGHTS RESERVED

AREA 'B' -
PARTIAL
GROUND
FLOOR PLAN

Sheet No.
IEYMS
A105

CONSTRUCTION DOCUMENTS

CONSTRUCTION DOCUMENTS

C:\Users\collura\Documents\189-2301_ISAAC_E_YOUNG_MS_collura\XARE.rvt



2 TYP. CABINET INTERIOR ELEVATION
A112 1/4" = 1'-0"

1 AREA 'B' FIRST FLOOR PLAN
A112 3/32" = 1'-0"

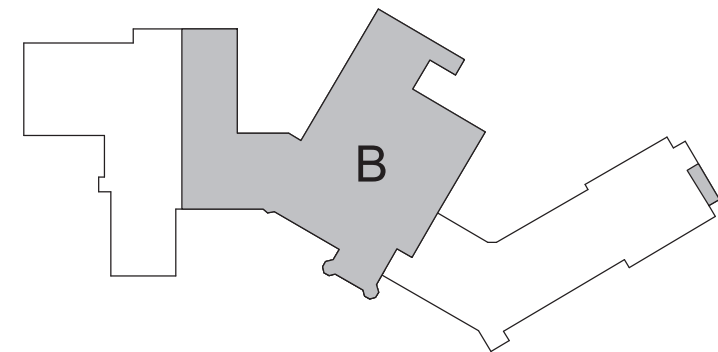
GENERAL NOTES

- REFER TO SHEET G001 FOR ADDITIONAL GENERAL NOTES.
- REFER TO SHEET G001 FOR PARTITION TYPES AND ADDITIONAL NOTES.

KEYNOTES

#	DESCRIPTION
A21	REINSTALL SALVAGED LOCKERS.
W1	INFILL WALL WITH STUD WALL TO MATCH ADJACENT WALL THICKNESS AND FINISH. REFER TO LIFE SAFETY DRAWINGS FOR MORE INFORMATION ON RATED WALLS.
W9	PREP AND PAINT WALL SURFACE IN ITS ENTIRETY.

KEY PLAN



19 Front St., Newburgh - New York 12550-7601
845-561-13179 www.csarch.com

CSARCH

Consultant

CITY SCHOOL DISTRICT OF NEW ROCHELLE ISAAC E YOUNG MIDDLE SCHOOL 2023 CAPITAL PROJECT - PHASE 2B

Project Title



DATE	DESCRIPTION

Drawn By:	RC
Checked By:	MZ
Proj. #:	66-11-00-81-0-003-018
CSArch Proj. #:	188-2301.02
Issued for Bid:	06/13/2025

Sheet Title

AREA 'B' -
PARTIAL FIRST
FLOOR PLAN

Sheet No.

IEYMS
A112

CONSTRUCTION DOCUMENTS


COPYRIGHT © ALL RIGHTS RESERVED

19 Front St. - Newburgh - New York 12550-7601
845-561-3179 www.csarchpc.com

Consultant

CITY SCHOOL DISTRICT OF NEW ROCHELLE
ISAAC E YOUNG MIDDLE SCHOOL
2023 CAPITAL PROJECT - PHASE 2B



	DATE	DESCRIPTION

Drawn By:	Author
Checked By:	Checker
Proj. #:	66-11-00-01-0-003-011
CSArch Proj. #:	188-2301.00
Issued for Bid:	06/13/2025

Sheet Title

AREA 'C' -
PARTIAL FIRST
FLOOR PLAN

Sheet No. IEYMS
A116

CONSTRUCTION DOCUMENTS

COPYRIGHT © ALL RIGHTS RESERVED

19 Front St. • Newburgh • New York 12550-7601
845 • 561 • 3179 www.csarchpc.com

Consultant

CITY SCHOOL DISTRICT OF NEW ROCHELLE
ISAAC E YOUNG MIDDLE SCHOOL
2023 CAPITAL PROJECT - PHASE 2B



	DATE	DESCRIPTION

Drawn By:	Author
Checked By:	Checker
Proj. #:	66-11-00-01-0-003-018
CSArch Proj. #:	188-2301.00
Issued for Bid:	06/13/2025

Sheet Title

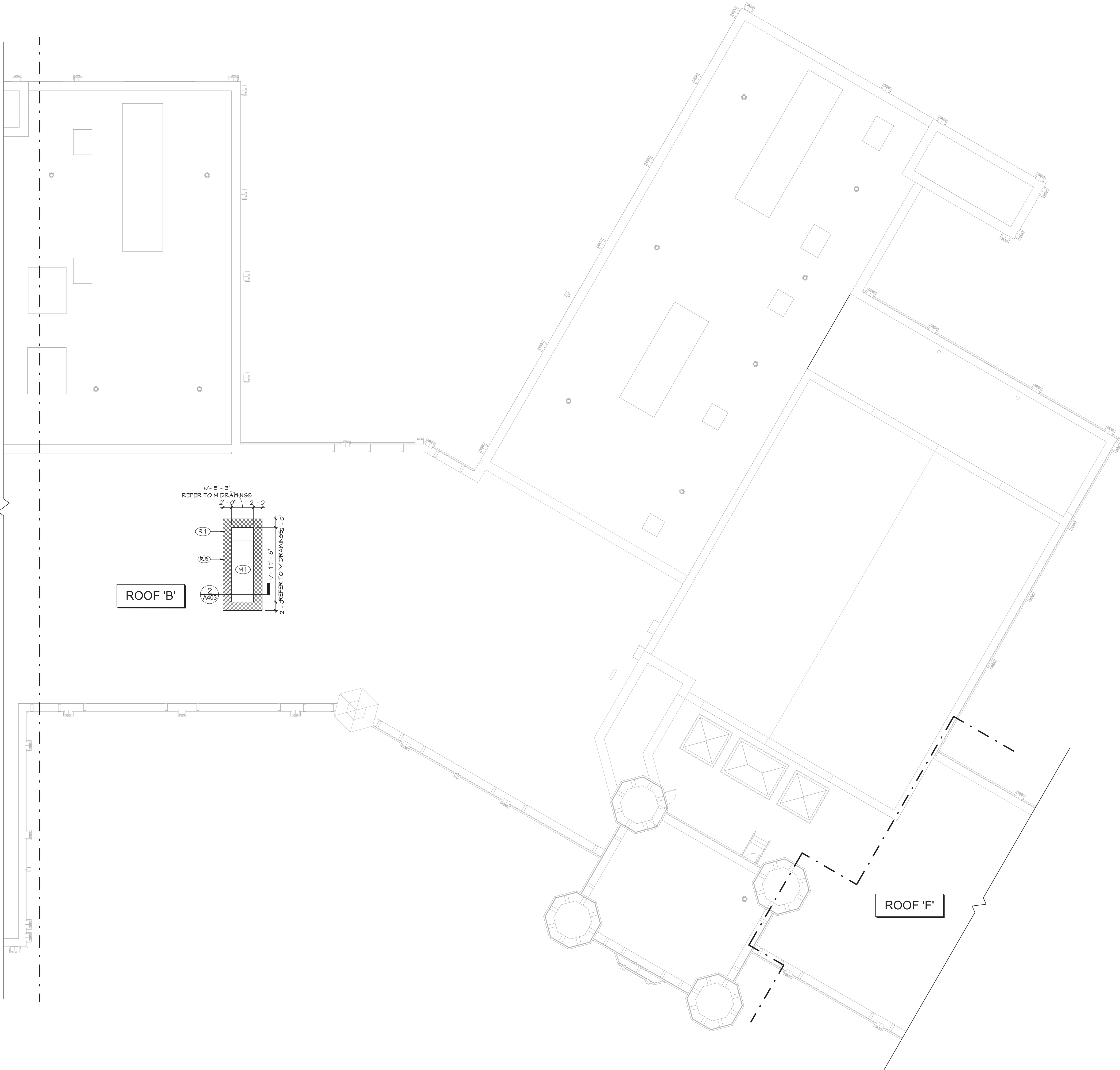
AREA 'C' -
PARTIAL
SECOND
FLOOR PLAN

Sheet No. IEYMS
A126

CONSTRUCTION DOCUMENTS

COPYRIGHT © ALL RIGHTS RESERVED

C:\Users\collura\Documents\188-2301_ISAAC_E_YOUNG_MS_collura\XARE.rvt



1 AREA 'B' - ROOF PLAN
A402 3/32" = 1'-0"

ROOF GENERAL NOTES

- ALL EXISTING ROOF DRAINS TO REMAIN, UNO.
- REFER TO ROOF SCAN REPORT FOR LOCATION OF WET INSULATION / ROOFING. REMOVE ALL WET INSULATION / ROOFING AND PATCH WITH NEW ROOFING IN KIND TO MATCH EXISTING THICKNESS IN THAT AREA.
- REFER TO ROOF SCAN REPORT FOR CORES TAKEN IN EXISTING ROOFING.
- CURB SIZES SHOWN REFLECT PENETRATING DUCT SIZE. CURB SIZE MAY VARY. REFER TO MECHANICAL DRAWINGS. COORDINATE ACTUAL SIZE OF CURBS IN APPROVED SUBMITTALS.
- NEW ROOF AND ROOF INSULATION FASTENERS TO ENGAGE HIGH POINT OF STEEL DECK FLUTES.
- PROVIDE MINIMUM 1 1/2" RIGID INSULATION AT NEW FLAT ROOF AREAS, TAPER INSULATION TO HEIGHTS INDICATED.

ROOF DESCRIPTIONS

ROOF AREA 'A' - NEW CONSTRUCTION

- PROVIDE TWO LAYERS MECHANICALLY FASTENED RIGID ROOF INSULATION (TOTAL THICKNESS 3 1/2"; MIN R20) ON NEW ROOF SUBSTRATE (METAL).
- PROVIDE MECHANICALLY FASTENED TAPERED ROOF INSULATION AND CANTS AT LOCATIONS SHOWN.
- PROVIDE FULLY ADHERED EPDM ROOF MEMBRANE.

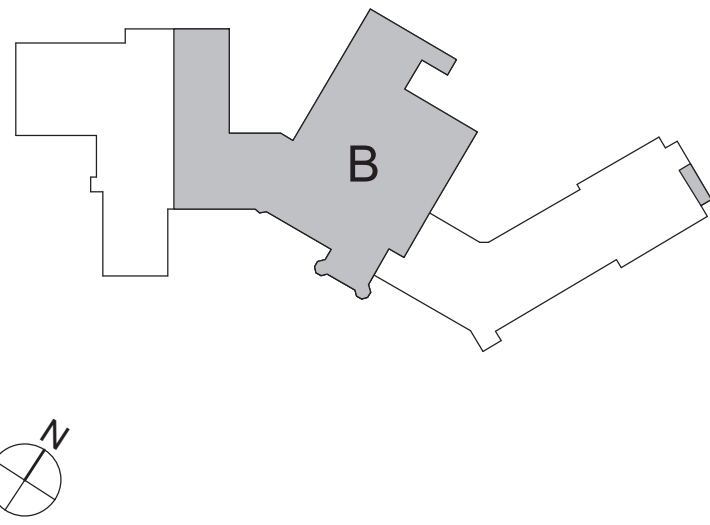
ROOF LEGEND

- RD ROOF DRAIN, REFER TO PLUMBING DRAWINGS
- SD SECONDARY DRAIN, REFER TO PLUMBING DRAWINGS
- SC ROOF SCUPPER
- VP VENT PIPE, REFER TO PLUMBING DRAWINGS
- RP ROOF PENETRATIONS, REFER TO MECHANICAL DRAWINGS
- AH ROOF ACCESS HATCH
- INDICATES DIRECTION OF SLOPE AT 1/4" PER FOOT MINIMUM, UNO.
- RL ROOF LADDER
- EJ EXPANSION JOINT

KEYNOTES

#	DESCRIPTION
M1	MECHANICAL INSTALLATION, TYPICAL REFER TO 'M' DRAWINGS.
R1	PROVIDE NEW SINGLE PLY ROOFING WITH COVERBOARD AND INSULATION.
R8	PROVIDE AND FLASH IN NEW ROOF CURB. REFER TO DETAILS.

KEY PLAN



19 Front St. - Newburgh - New York 12550-7601
845.561.1317 www.csarch.com

CSARCH

CITY SCHOOL DISTRICT OF NEW ROCHELLE
ISAAC E YOUNG MIDDLE SCHOOL
2023 CAPITAL PROJECT - PHASE 2B

Project Title



DATE	DESCRIPTION

Drawn By:	Author:
Checked By:	Checker:
Proj. #:	66-11-00-81-0-003-018
CSArch Proj. #:	188-2301.02
Issued for Bid:	06/13/2025

Sheet Title

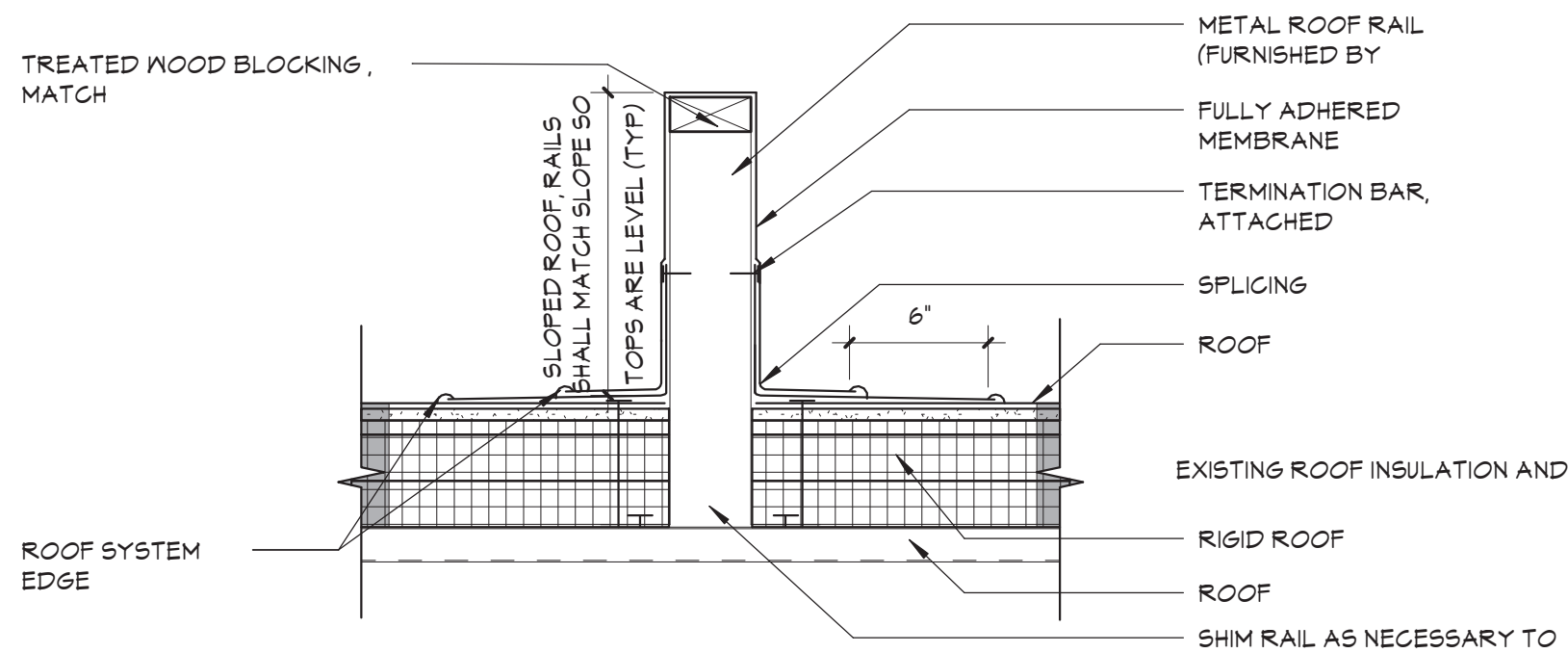
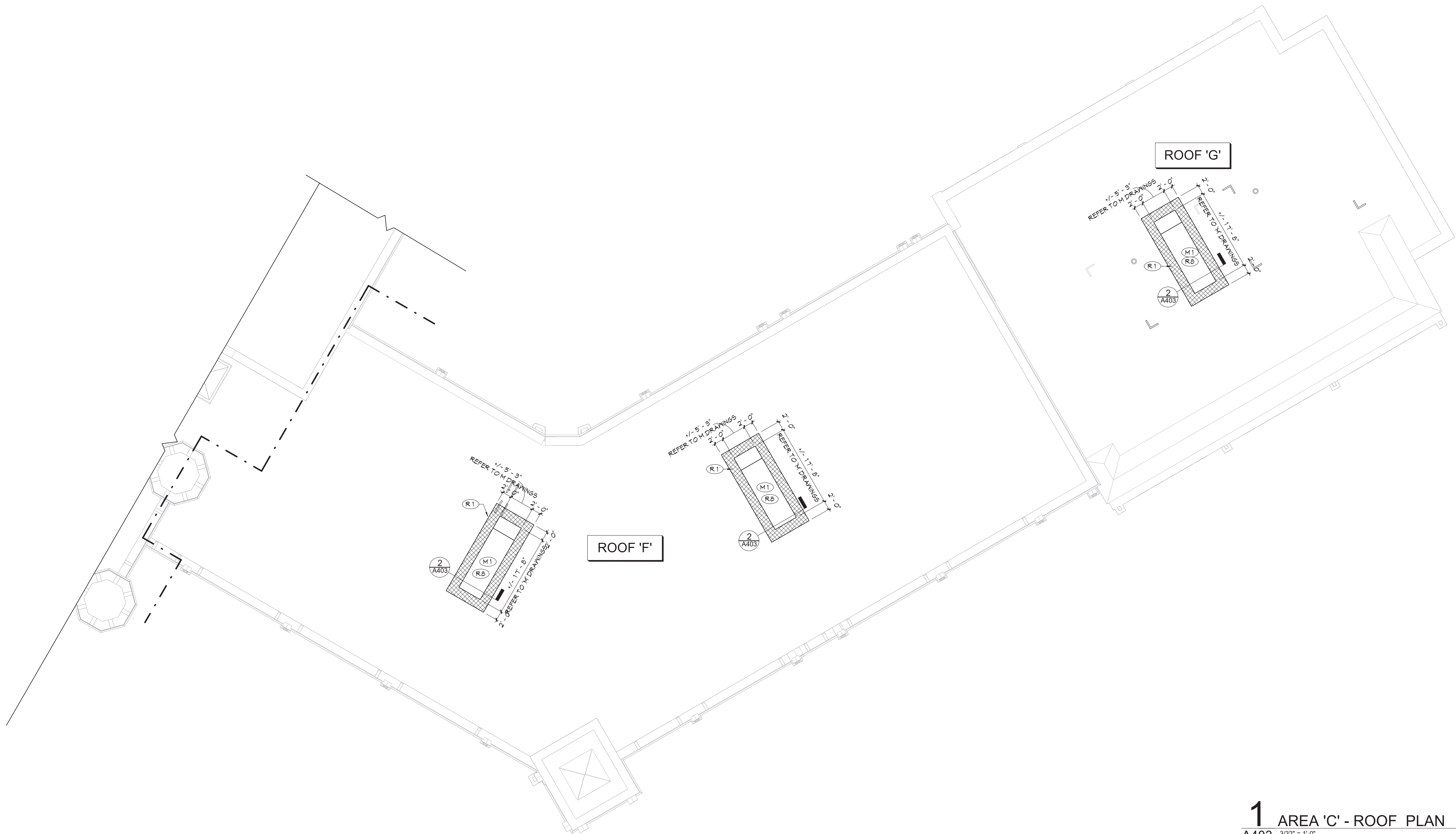
AREA 'B' -
PARTIAL ROOF
PLAN

Sheet No.

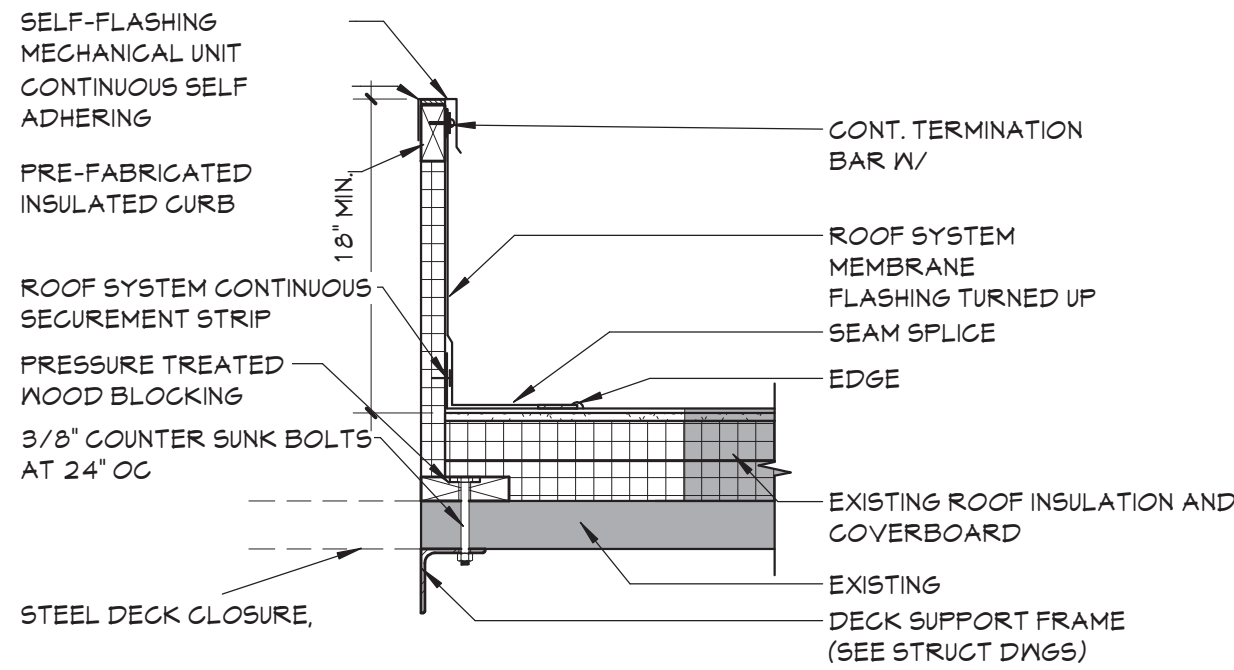
IEYMS
A402

CONSTRUCTION DOCUMENTS

COPYRIGHT © ALL RIGHTS RESERVED



3 EQUIPMENT RAIL DETAIL
A403 1 1/2" = 1'-0"



2 EQUIPMENT CURB DETAIL
A403 1" = 1'-0"

ROOF GENERAL NOTES

- ALL EXISTING ROOF DRAINS TO REMAIN, UNO.
- REFER TO ROOF SCAN REPORT FOR LOCATION OF WET INSULATION / ROOFING. REMOVE ALL WET INSULATION / ROOFING AND PATCH WITH NEW ROOFING IN KIND TO MATCH EXISTING THICKNESS IN THAT AREA.
- REFER TO ROOF SCAN REPORT FOR CORES TAKEN IN EXISTING ROOFING.
- CURB SIZES SHOWN REFLECT PENETRATING DUCT SIZE. CURB SIZE MAY VARY. REFER TO MECHANICAL DRAWINGS. COORDINATE ACTUAL SIZE OF CURBS IN APPROVED SUBMITTALS.
- NEW ROOF AND ROOF INSULATION FASTENERS TO ENGAGE HIGH POINT OF STEEL DECK FLUTES.
- PROVIDE MINIMUM 1 1/2" RIGID INSULATION AT NEW FLAT ROOF AREAS, TAPER INSULATION TO HEIGHTS INDICATED.

ROOF DESCRIPTIONS

ROOF AREA 'A' - NEW CONSTRUCTION

- PROVIDE TWO LAYERS MECHANICALLY FASTENED RIGID ROOF INSULATION (TOTAL THICKNESS 3 1/2", MIN R20) ON NEW ROOF SUBSTRATE (METAL).
- PROVIDE MECHANICALLY FASTENED TAPERED ROOF INSULATION AND CANTS AT LOCATIONS SHOWN.
- PROVIDE FULLY ADHERED EPDM ROOF MEMBRANE.

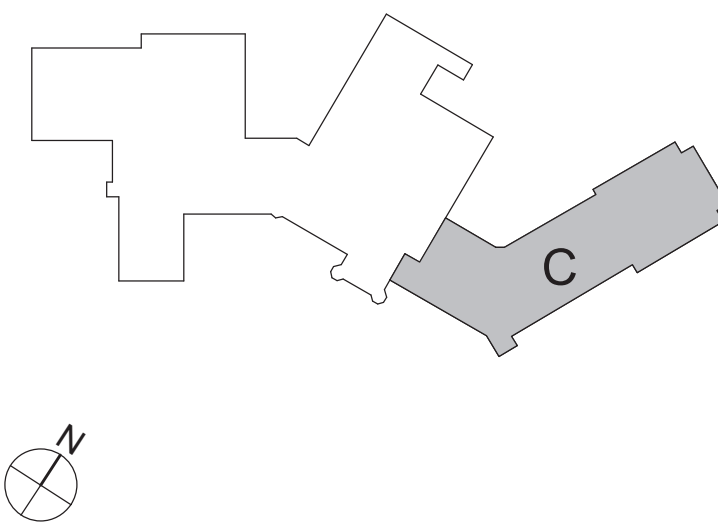
ROOF LEGEND

- RD ROOF DRAIN, REFER TO PLUMBING DRAWINGS
- SD SECONDARY DRAIN, REFER TO PLUMBING DRAWINGS
- SC ROOF SCUPPER
- VP VENT PIPE, REFER TO PLUMBING DRAWINGS
- RP ROOF PENETRATIONS, REFER TO MECHANICAL DRAWINGS
- AH ROOF ACCESS HATCH
- INDICATES DIRECTION OF SLOPE AT 1/4" PER FOOT MINIMUM, UNO
- RL ROOF LADDER
- EL EXPANSION JOINT

KEYNOTES

#	DESCRIPTION
M1	MECHANICAL INSTALLATION, TYPICAL REFER TO 'M' DRAWINGS.
R1	PROVIDE NEW SINGLE PLY ROOFING WITH COVERBOARD AND INSULATION.
R8	PROVIDE AND FLASH IN NEW ROOF CURB. REFER TO DETAILS.

KEY PLAN



1 AREA 'C' - ROOF PLAN
A403 3/32" = 1'-0"

DATE	DESCRIPTION

Drawn By:	Author:
Checked By:	Checker:
Proj. #:	66-11-00-81-0-003-018
CSArch Proj. #:	188-2301.02
Issued for Bid:	06/13/2025

C:\Users\collura\Documents\189-2301_ISAAC_E_YOUNG_MS_rallura\XARE.rvt



1 AREA 'B' - GROUND FLOOR REFLECTED CEILING PLAN
A802 3/32" = 1'-0"

GENERAL NOTES

1. REFER TO SHEET G001 FOR ADDITIONAL GENERAL NOTES.
2. REFER TO SHEET G001 FOR PARTITION TYPES AND ADDITIONAL NOTES.

CEILING NOTES

1. INSTALL CEILING GRIDS CENTERED IN THE ROOM. UNO. IN ROOMS OTHER THAN RECTANGULAR SHAPED, INSTALL GRIDS CENTERED ON WALLS OR OTHER BUILT FEATURES AS INDICATED.
2. INSTALLATION HEIGHTS OF THE CEILINGS MAY VARY SLIGHTLY FROM PLANS IN ROOMS WITH EXTERIOR WINDOWS. ACTUAL CEILING HEIGHT TO BE VERIFIED IN THE FIELD.
3. FINAL INSTALLED CEILINGS SHALL HAVE HEIGHTS COORDINATED WITH OTHER CONTRACTORS WITH ABOVE CEILING WORK AND VERIFIED WITH FIELD CONDITIONS. ALL CHANGES IN CONFIGURATION OR HEIGHTS ARE TO BE APPROVED BY THE ARCHITECT.

CEILING LEGEND

GWB OR PLASTER CEILING, REFER TO DETAILS AND ROOM FINISH SCHEDULE

SUSPENDED ACOUSTICAL PANEL CEILING SYSTEM

CEILING HEIGHT ABOVE FINISHED FLOOR

ELECTRICAL EQUIPMENT. REFER TO ELECTRICAL DRAWINGS FOR ADDITIONAL INFORMATION.

2'x4' LIGHT FIXTURE

2'x2' LIGHT FIXTURE

1'x1' LIGHT FIXTURE

- PENDANT LIGHT FIXTURE
- RECESSED DOWN LIGHT
- CEILING MOUNTED EXIT SIGN
- CEILING MOUNTED OCCUPANCY SENSOR
- CEILING MOUNTED SMOKE DETECTOR
- CEILING MOUNTED HEAT DETECTOR
- CEILING MOUNTED PA SPEAKER
- CEILING MOUNTED SECURITY J-BOX
- CEILING MOUNTED MOTION SENSOR
- CEILING MOUNTED DATA J-BOX

MECHANICAL EQUIPMENT. REFER TO MECHANICAL DRAWINGS FOR ADDITIONAL INFORMATION.

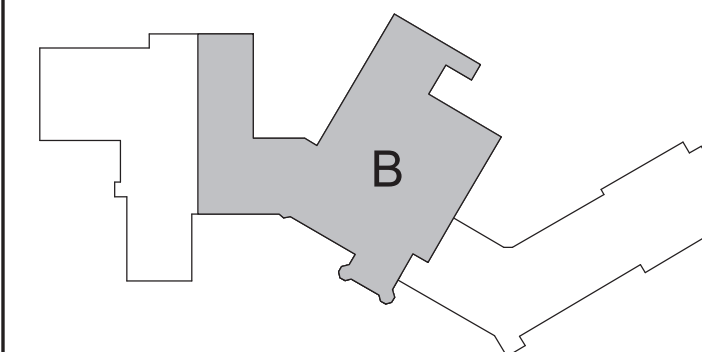
HVAC SUPPLY GRILLE

HVAC RETURN GRILLE

KEYNOTES

#	DESCRIPTION
C4	REINSTALL SALVAGED EXISTING SUSPENDED CEILING PANELS IN NEW NEW MODIFIED ACOUSTIC PANEL GRID SYSTEM. REFER TO ELECTRICAL AND MECHANICAL DRAWINGS FOR EQUIPMENT INSTALLATIONS.

KEY PLAN



19 Front St., Newburgh, New York 12550-7601
845.561.5379 www.csarch.com

CSARCH

CITY SCHOOL DISTRICT OF NEW ROCHELLE ISAAC E YOUNG MIDDLE SCHOOL 2023 CAPITAL PROJECT - PHASE 2B

Project Title



DATE	DESCRIPTION

Drawn By:	Author
Checked By:	Checked
Proj. #:	66-11-00-81-0-003-018
CSArch Proj. #:	188-2301.02
Issued for Bid:	06/13/2025

Sheet Title
AREA 'B' -
PARTIAL
GROUND
FLOOR RCP

Sheet No.
IEYMS
A802

CONSTRUCTION DOCUMENTS

COPYRIGHT © ALL RIGHTS RESERVED

C:\Users\collura\Documents\188-2301_ISAAC_E_YOUNG_MS_collura\XARE.rvt



1 AREA 'C' - GROUND FLOOR REFLECTED CEILING PLAN
A803 3/32" = 1'-0"

GENERAL NOTES

1. REFER TO SHEET G001 FOR ADDITIONAL GENERAL NOTES.
2. REFER TO SHEET G001 FOR PARTITION TYPES AND ADDITIONAL NOTES.

CEILING NOTES

1. INSTALL CEILING GRIDS CENTERED IN THE ROOM. UNO. IN ROOMS OTHER THAN RECTANGULAR SHAPED, INSTALL GRIDS CENTERED ON WALLS OR OTHER BUILT FEATURES AS INDICATED.
2. INSTALLATION HEIGHTS OF THE CEILINGS MAY VARY SLIGHTLY FROM PLANS IN ROOMS WITH EXTERIOR WINDOWS. ACTUAL CEILING HEIGHT TO BE VERIFIED IN THE FIELD.
3. FINAL INSTALLED CEILINGS SHALL HAVE HEIGHTS COORDINATED WITH OTHER CONTRACTORS WITH ABOVE CEILING WORK AND VERIFIED WITH FIELD CONDITIONS. ALL CHANGES IN CONFIGURATION OR HEIGHTS ARE TO BE APPROVED BY THE ARCHITECT.

CEILING LEGEND

QWB OR PLASTER CEILING, REFER TO DETAILS AND ROOM FINISH SCHEDULE

SUSPENDED ACOUSTICAL PANEL CEILING SYSTEM

CEILING HEIGHT ABOVE FINISHED FLOOR

ELECTRICAL EQUIPMENT. REFER TO ELECTRICAL DRAWINGS FOR ADDITIONAL INFORMATION.

2'x4' LIGHT FIXTURE

2'x2' LIGHT FIXTURE

1'x1' LIGHT FIXTURE

PENDANT LIGHT FIXTURE

RECESSED DOWN LIGHT

CEILING MOUNTED EXIT SIGN

CEILING MOUNTED OCCUPANCY SENSOR

CEILING MOUNTED SMOKE DETECTOR

CEILING MOUNTED HEAT DETECTOR

CEILING MOUNTED PA SPEAKER

CEILING MOUNTED SECURITY J-BOX

CEILING MOUNTED MOTION SENSOR

CEILING MOUNTED DATA J-BOX

MECHANICAL EQUIPMENT. REFER TO MECHANICAL DRAWINGS FOR ADDITIONAL INFORMATION.

HVAC SUPPLY GRILLE

HVAC RETURN GRILLE

KEYNOTES

#	DESCRIPTION
C4	REINSTALL SALVAGED EXISTING SUSPENDED CEILING PANELS IN NEW NEW MODIFIED ACOUSTIC PANEL GRID SYSTEM. REFER TO ELECTRICAL AND MECHANICAL DRAWINGS FOR EQUIPMENT INSTALLATIONS.

KEY PLAN

AREA 'C' - PARTIAL GROUND FLOOR RCP

IEYMS A803

19 Front St., Newburgh, New York 12550-7601
845.561.5179 www.csarch.com

Consultant

CITY SCHOOL DISTRICT OF NEW ROCHELLE
ISAAC E YOUNG MIDDLE SCHOOL
2023 CAPITAL PROJECT - PHASE 2B

Project Title



DATE	DESCRIPTION

Drawn By: _____
Checked By: _____
Proj. #: 66-11-00-81-0-003-018
CSArch Proj. #: 188-2301.02
Issued for Bid: 06/13/2025

Sheet Title

AREA 'C' - PARTIAL GROUND FLOOR RCP

Sheet No.

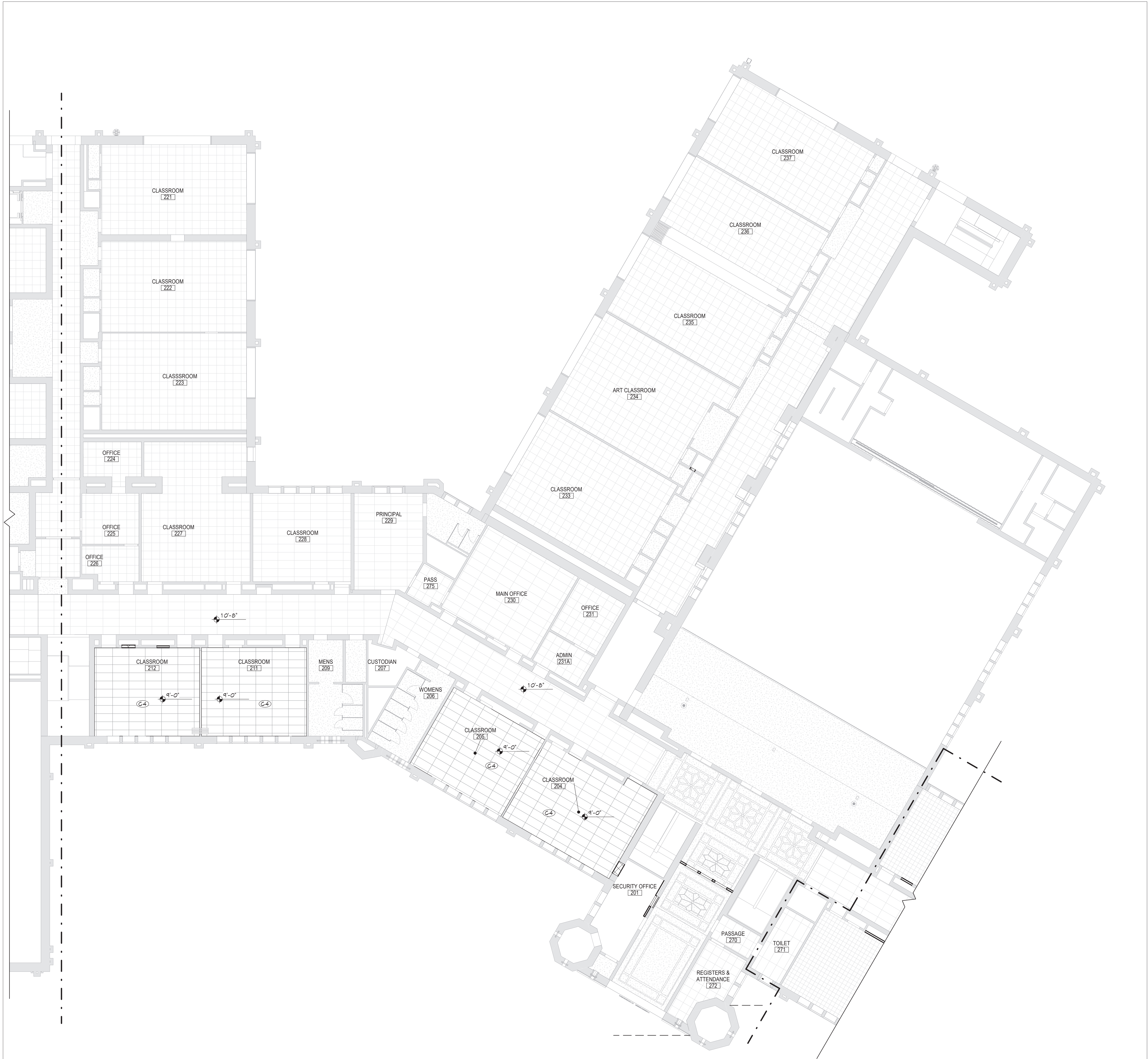
IEYMS A803

CONSTRUCTION DOCUMENTS

CSARCH

COPYRIGHT © ALL RIGHTS RESERVED

C:\Users\collura\Documents\188-2301_ISAAC_E_YOUNG_MS_collura\WARE.rvt



1 AREA 'B' - FIRST FLOOR REFLECTED CEILING PLAN
A812 3/32" = 1'-0"

GENERAL NOTES

1. REFER TO SHEET G001 FOR ADDITIONAL GENERAL NOTES.
2. REFER TO SHEET G001 FOR PARTITION TYPES AND ADDITIONAL NOTES.

CEILING NOTES

1. INSTALL CEILING GRIDS CENTERED IN THE ROOM, UNO. IN ROOMS OTHER THAN RECTANGULAR SHAPED, INSTALL GRIDS CENTERED ON WALLS OR OTHER BUILT FEATURES AS INDICATED.
2. INSTALLATION HEIGHTS OF THE CEILINGS MAY VARY SLIGHTLY FROM PLANS IN ROOMS WITH EXTERIOR WINDOWS. ACTUAL CEILING HEIGHT TO BE VERIFIED IN THE FIELD.
3. FINAL INSTALLED CEILINGS SHALL HAVE HEIGHTS COORDINATED WITH OTHER CONTRACTORS WITH ABOVE CEILING WORK AND VERIFIED WITH FIELD CONDITIONS. ALL CHANGES IN CONFIGURATION OR HEIGHTS ARE TO BE APPROVED BY THE ARCHITECT.

CEILING LEGEND

QWB OR PLASTER CEILING, REFER TO DETAILS AND ROOM FINISH SCHEDULE

SUSPENDED ACOUSTICAL PANEL CEILING SYSTEM

CEILING HEIGHT ABOVE FINISHED FLOOR

ELECTRICAL EQUIPMENT. REFER TO ELECTRICAL DRAWINGS FOR ADDITIONAL INFORMATION.

2'x4' LIGHT FIXTURE

2'x2' LIGHT FIXTURE

1'x1' LIGHT FIXTURE

PENDANT LIGHT FIXTURE

RECESSED DOWN LIGHT

CEILING MOUNTED EXIT SIGN

CEILING MOUNTED OCCUPANCY SENSOR

CEILING MOUNTED SMOKE DETECTOR

CEILING MOUNTED HEAT DETECTOR

CEILING MOUNTED PA SPEAKER

CEILING MOUNTED SECURITY J-BOX

CEILING MOUNTED MOTION SENSOR

CEILING MOUNTED DATA J-BOX

MECHANICAL EQUIPMENT. REFER TO MECHANICAL DRAWINGS FOR ADDITIONAL INFORMATION.

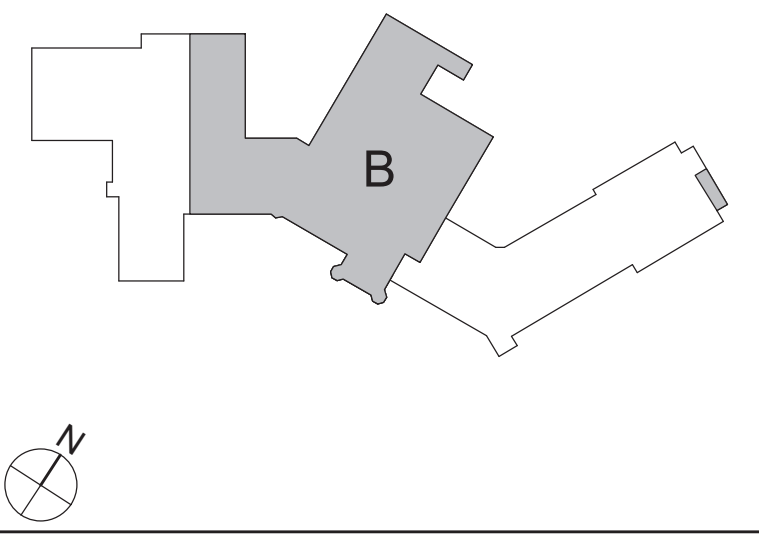
HVAC SUPPLY GRILLE

HVAC RETURN GRILLE

KEYNOTES

#	DESCRIPTION
C4	REINSTALL SALVAGED EXISTING SUSPENDED CEILING PANELS IN NEW NEW MODIFIED ACOUSTIC PANEL GRID SYSTEM. REFER TO ELECTRICAL AND MECHANICAL DRAWINGS FOR EQUIPMENT INSTALLATIONS.

KEY PLAN



19 Front St., Newburgh, New York 12550-7601
845.561.1379 www.csarch.com

CSARCH

Consultant

CITY SCHOOL DISTRICT OF NEW ROCHELLE
ISAAC E YOUNG MIDDLE SCHOOL
2023 CAPITAL PROJECT - PHASE 2B



#	DATE	DESCRIPTION

Drawn By: RC
Checked By: MZ
Proj. #: 66-11-00-81-0-003-018
CSArch Proj. #: 188-2301.02
Issued for Bid: 06/13/2025

Sheet Title
**AREA 'B' -
PARTIAL FIRST
FLOOR RCP**

Sheet No.
**IEYMS
A812**

CONSTRUCTION DOCUMENTS

COPYRIGHT © ALL RIGHTS RESERVED

C4	REINSTALL SALVAGED EXISTING SUSPENDED CEILING PANELS IN NEW NEW MODIFIED ACOUSTIC PANEL GRID SYSTEM. REFER TO ELECTRICAL AND MECHANICAL DRAWINGS FOR EQUIPMENT INSTALLATIONS.
----	---

COPYRIGHT © ALL RIGHTS RESERVED

Consultant

CITY SCHOOL DISTRICT OF NEW ROCHELLE
ISAAC E YOUNG MIDDLE SCHOOL
2023 CAPITAL PROJECT - PHASE 2B

Project Title



	DATE	DESCRIPTION

Drawn By:	Auth
Checked By:	Check
Proj. #:	66-11-00-01-0-003-01
CSArch Proj. #:	188-2301.0
Issued for Bid:	06/13/202

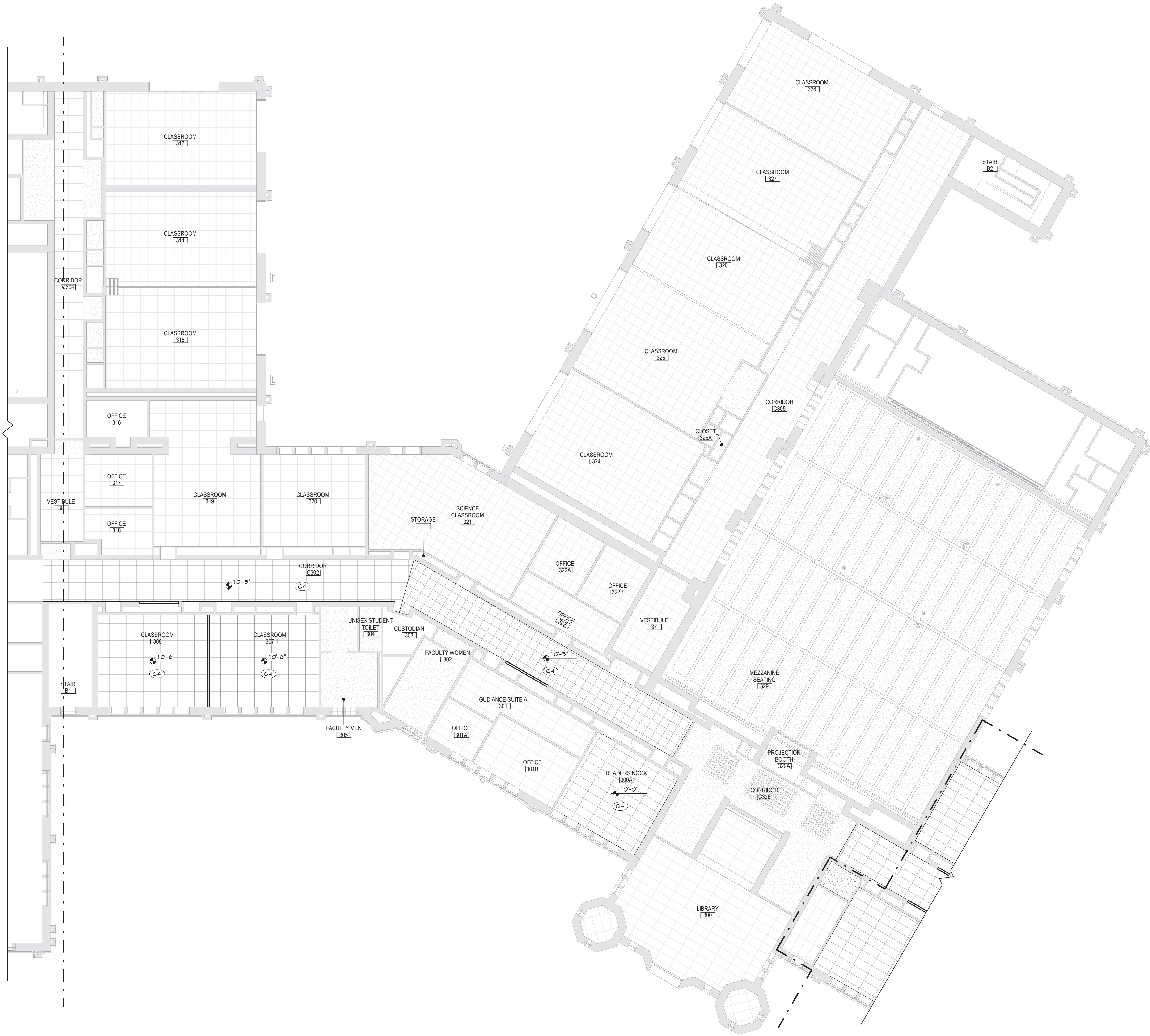
Sheet Title

AREA 'C' -
PARTIAL FIRST
FLOOR RCP

Sheet No. IEYMS
A813

CONSTRUCTION DOCUMENTS

C:\Users\collura\Documents\188-2301_ISAAC_E_YOUNG_MS_collura\XARE.rvt



1 AREA 'B' - SECOND FLOOR REFLECTED CEILING PLAN
A822 3/32" = 1'-0"

GENERAL NOTES

1. REFER TO SHEET G001 FOR ADDITIONAL GENERAL NOTES.
2. REFER TO SHEET G001 FOR PARTITION TYPES AND ADDITIONAL NOTES.

CEILING NOTES

1. INSTALL CEILING GRIDS CENTERED IN THE ROOM. UNO. IN ROOMS OTHER THAN RECTANGULAR SHAPED, INSTALL GRIDS CENTERED ON WALLS OR OTHER BUILT FEATURES AS INDICATED.
2. INSTALLATION HEIGHTS OF THE CEILINGS MAY VARY SLIGHTLY FROM PLANS IN ROOMS WITH EXTERIOR WINDOWS. ACTUAL CEILING HEIGHT TO BE VERIFIED IN THE FIELD.
3. FINAL INSTALLED CEILINGS SHALL HAVE HEIGHTS COORDINATED WITH OTHER CONTRACTORS WITH ABOVE CEILING WORK AND VERIFIED WITH FIELD CONDITIONS. ALL CHANGES IN CONFIGURATION OR HEIGHTS ARE TO BE APPROVED BY THE ARCHITECT.

CEILING LEGEND

QWB OR PLASTER CEILING, REFER TO DETAILS AND ROOM FINISH SCHEDULE

SUSPENDED ACOUSTICAL PANEL CEILING SYSTEM

CEILING HEIGHT ABOVE FINISHED FLOOR

ELECTRICAL EQUIPMENT, REFER TO ELECTRICAL DRAWINGS FOR ADDITIONAL INFORMATION.

2'x4' LIGHT FIXTURE

2'x2' LIGHT FIXTURE

1'x1' LIGHT FIXTURE

PENDANT LIGHT FIXTURE

RECESSED DOWN LIGHT

CEILING MOUNTED EXIT SIGN

CEILING MOUNTED OCCUPANCY SENSOR

CEILING MOUNTED SMOKE DETECTOR

CEILING MOUNTED HEAT DETECTOR

CEILING MOUNTED PA SPEAKER

CEILING MOUNTED SECURITY J-BOX

CEILING MOUNTED MOTION SENSOR

CEILING MOUNTED DATA J-BOX

MECHANICAL EQUIPMENT, REFER TO MECHANICAL DRAWINGS FOR ADDITIONAL INFORMATION.

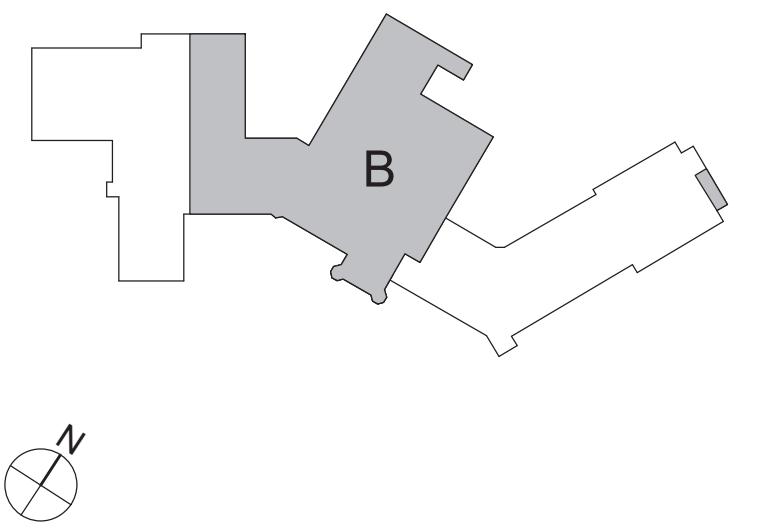
HVAC SUPPLY GRILLE

HVAC RETURN GRILLE

KEYNOTES

#	DESCRIPTION
C4	REINSTALL SALVAGED EXISTING SUSPENDED CEILING PANELS IN NEW NEW MODIFIED ACOUSTIC PANEL GRID SYSTEM. REFER TO ELECTRICAL AND MECHANICAL DRAWINGS FOR EQUIPMENT INSTALLATIONS.

KEY PLAN



19 Front St., Newburgh, New York 12550-7601
845.561.5379 www.csarch.com

CSARCH

Consultant

CITY SCHOOL DISTRICT OF NEW ROCHELLE
ISAAC E YOUNG MIDDLE SCHOOL
2023 CAPITAL PROJECT - PHASE 2B



#	DATE	DESCRIPTION
1		
2		
3		
4		
5		
6		
7		
8		
9		
10		

Drawn By: _____
Checked By: _____
Proj. #: 66-11-00-81-0-003-018
CSArch Proj. #: 188-2301.02
Issued for Bid: 06/13/2025

Sheet Title

AREA 'B' -
PARTIAL
SECOND
FLOOR RCP

Sheet No.

IEYMS
A822

CONSTRUCTION DOCUMENTS

COPYRIGHT © ALL RIGHTS RESERVED

C:\Users\collura\Documents\189-2301_ISAAC_E_YOUNG_MS_collura\XARE.rvt



1 AREA 'C' - SECOND FLOOR REFLECTED CEILING PLAN
A823 3/32" = 1'-0"

GENERAL NOTES

- REFER TO SHEET G001 FOR ADDITIONAL GENERAL NOTES.
- REFER TO SHEET G001 FOR PARTITION TYPES AND ADDITIONAL NOTES.

CEILING NOTES

- INSTALL CEILING GRIDS CENTERED IN THE ROOM. UNO. IN ROOMS OTHER THAN RECTANGULAR SHAPED, INSTALL GRIDS CENTERED ON WALLS OR OTHER BUILT FEATURES AS INDICATED.
- INSTALLATION HEIGHTS OF THE CEILINGS MAY VARY SLIGHTLY FROM PLANS IN ROOMS WITH EXTERIOR WINDOWS. ACTUAL CEILING HEIGHT TO BE VERIFIED IN THE FIELD.
- FINAL INSTALLED CEILINGS SHALL HAVE HEIGHTS COORDINATED WITH OTHER CONTRACTORS WITH ABOVE CEILING WORK AND VERIFIED WITH FIELD CONDITIONS. ALL CHANGES IN CONFIGURATION OR HEIGHTS ARE TO BE APPROVED BY THE ARCHITECT.

CEILING LEGEND

GWB OR PLASTER CEILING, REFER TO DETAILS AND ROOM FINISH SCHEDULE

SUSPENDED ACOUSTICAL PANEL CEILING SYSTEM

CEILING HEIGHT ABOVE FINISHED FLOOR

ELECTRICAL EQUIPMENT. REFER TO ELECTRICAL DRAWINGS FOR ADDITIONAL INFORMATION.

2'x4' LIGHT FIXTURE

2'x2' LIGHT FIXTURE

1'x1' LIGHT FIXTURE

PENDANT LIGHT FIXTURE

RECESSED DOWN LIGHT

CEILING MOUNTED EXIT SIGN

CEILING MOUNTED OCCUPANCY SENSOR

CEILING MOUNTED SMOKE DETECTOR

CEILING MOUNTED HEAT DETECTOR

CEILING MOUNTED PA SPEAKER

CEILING MOUNTED SECURITY J-BOX

CEILING MOUNTED MOTION SENSOR

CEILING MOUNTED DATA J-BOX

MECHANICAL EQUIPMENT. REFER TO MECHANICAL DRAWINGS FOR ADDITIONAL INFORMATION.

HVAC SUPPLY GRILLE

HVAC RETURN GRILLE

KEYNOTES

#	DESCRIPTION
C4	REINSTALL SALVAGED EXISTING SUSPENDED CEILING PANELS IN NEW NEW MODIFIED ACOUSTIC PANEL GRID SYSTEM. REFER TO ELECTRICAL AND MECHANICAL DRAWINGS FOR EQUIPMENT INSTALLATIONS.

KEY PLAN

AREA 'C' - PARTIAL SECOND FLOOR RCP

Sheet No. **IEYMS A823**

CONSTRUCTION DOCUMENTS

19 Front St., Newburgh, New York 12550-7601
845.561.1317 www.csarch.com

Consultant

CITY SCHOOL DISTRICT OF NEW ROCHELLE
ISAAC E YOUNG MIDDLE SCHOOL
2023 CAPITAL PROJECT - PHASE 2B

Project Title



DATE	DESCRIPTION

Drawn By: _____
Checked By: _____
Proj. #: 66-11-00-81-0-003-018
CSArch Proj. #: 188-2301.02
Issued for Bid: 06/13/2025

Sheet Title
AREA 'C' - PARTIAL SECOND FLOOR RCP

Sheet No.
IEYMS A823
CONSTRUCTION DOCUMENTS

CSARCH

C:\Users\collura\Documents\189-2301_ISAAC_E_YOUNG_MS_rollup\XARE.rvt

MATERIALS LEGEND					
MATERIAL	MANUFACTURER	MODEL	COLOR #/NAME	SIZE	NOTE
CHAIR RAIL					
CR-1	MILLWORK RAIL	MATCH EXISTING	AS SELECTED FROM FULL RANGE OF COLOR / MATCH EXISTING	MATCH EXISTING	CLASSROOM 204
MILLWORK BASE					
MB-1	MILLWORK BASE	MATCH EXISTING	AS SELECTED FROM FULL RANGE OF COLOR / MATCH EXISTING	MATCH EXISTING	STAINED TO MATCH EXISTING
MB-2	MILLWORK BASE	MATCH EXISTING	AS SELECTED FROM FULL RANGE OF COLOR / MATCH EXISTING	MATCH EXISTING	PAINTED TO MATCH EXISTING
PAINT					
PNT-1	SHERWIN WILLIAMS	EGGSHELL	AS SELECTED FROM FULL RANGE OF COLOR / MATCH EXISTING		SECURITY OFFICE/ CORR/ VEST - MATCH TO VEST. SV01
PNT-2	SHERWIN WILLIAMS	EGGSHELL	AS SELECTED FROM FULL RANGE OF COLOR / MATCH EXISTING		CLASSROOM 204
PNT-3	SHERWIN WILLIAMS	FLAT	AS SELECTED FROM FULL RANGE OF COLOR / MATCH EXISTING		GYPSUM CEILING
PNT-4	SHERWIN WILLIAMS	EGGSHELL	AS SELECTED FROM FULL RANGE OF COLOR / MATCH EXISTING		PATCHED WALLS
RUBBER BASE					
RB-1	TARKETT/ JOHNSONITE	BASEWORKS	32 PEBBLE	4"	SECURITY OFFICE
RB-2	TARKETT/ JOHNSONITE	BASEWORKS	AS SELECTED FROM FULL RANGE OF COLOR / MATCH EXISTING	MATCH EXISTING	CLASSROOM 204
RB-3	TARKETT/ JOHNSONITE	BASEWORKS	AS SELECTED FROM FULL RANGE OF COLOR / MATCH EXISTING	MATCH EXISTING	PATCH @ WALL REPLACEMENTS AS REQUIRED
RB-4	TARKETT/ JOHNSONITE	BASEWORKS	AS SELECTED FROM FULL RANGE OF COLOR / MATCH EXISTING	MATCH EXISTING	PATCH @ WALL REPLACEMENTS AS REQUIRED
RB-5	TARKETT/ JOHNSONITE	BASEWORKS	AS SELECTED FROM FULL RANGE OF COLOR / MATCH EXISTING	MATCH EXISTING	PATCH @ WALL REPLACEMENTS AS REQUIRED - AREA C CLASSROOMS
TERRAZZO					
TERR-1		EPOXY TERRAZZO	MATCH EXISTING		FLOOR @ CORRIDOR - PATCH AS REQUIRED

ROOM FINISH SCHEDULE							
ROOM NUMBER	ROOM NAME	BASE	FINISH	Wall Finish	Accent_Wall	CEILING	REMARKS
	CLOSET	ETR/MB-1	ETR	ETR/PNT-4			MB-1 STAINED TO MATCH EXISTING
104	TECHNOLOGY CLASSROOM	ETR/RB-4	ETR	ETR/PNT-4			
108	TECHNOLOGY CLASSROOM	ETR/MB-2	ETR	ETR/PNT-4			MB-2 PAINTED TO MATCH EXISTING
148	CLASSROOM	ETR/MB-2/RB-3	ETR	ETR/PNT-4			MB-2 PAINTED TO MATCH EXISTING
149	CLASSROOM	ETR/MB-2/RB-3	ETR	ETR/PNT-4			MB-2 PAINTED TO MATCH EXISTING
164	TECHNOLOGY CLASSROOM	ETR/RB-3	ETR	ETR/PNT-4			
166	RESOURCE ROOM	ETR/MB-1	ETR	ETR/PNT-4			MB-1 STAINED TO MATCH EXISTING
168	MUSIC ROOM	ETR/MB-1	ETR	ETR/PNT-4			MB-1 STAINED TO MATCH EXISTING
201D	ST	ETR/MB-1	ETR	ETR/PNT-4			MB-1 STAINED TO MATCH EXISTING
201E	ST	ETR/RB-4	ETR	ETR/PNT-4			
201F	ST	ETR/MB-1/RB-3	ETR	PNT-4			MB-1 STAINED TO MATCH EXISTING
204	CLASSROOM	ETR/MB-1/RB-2	ETR	ETR/PNT-2/CR-1		ETR	MB-1 STAINED TO MATCH EXISTING
205	CLASSROOM	ETR/MB-2/RB-3	ETR	ETR/PNT-4			MB-2 PAINTED TO MATCH EXISTING
212	CLASSROOM	ETR/RB-4	ETR	ETR/PNT-4			
240	CLASSROOM	ETR/MB-1/RB-3	ETR	ETR/PNT-4			MB-1 STAINED TO MATCH EXISTING
241	CLASSROOM	ETR/MB-1/RB-3	ETR	ETR/PNT-4			MB-1 STAINED TO MATCH EXISTING
242	CLASSROOM	ETR/RB-3	ETR	ETR/PNT-4			
246	CLASSROOM	ETR/MB-1	ETR	ETR/PNT-4			
247	SOCIAL WORKER	ETR/MB-1	ETR	ETR/PNT-4			
248A	PSYCH. OFFICE	ETR/MB-1	ETR	ETR/PNT-4			
248B	CLASSROOM	ETR/MB-1	ETR	ETR/PNT-4			
251	CLASSROOM	ETR/RB-5	ETR	ETR/PNT-4			
254	CLASSROOM	ETR/RB-5	ETR	ETR/PNT-4			
255	CLASSROOM	ETR/RB-5	ETR	ETR/PNT-4			
256	CLASSROOM	ETR/MB-1	ETR	ETR/PNT-4			
257	CLASSROOM	ETR/MB-1	ETR	ETR/PNT-4			
258	CLASSROOM	ETR/MB-1	ETR	ETR/PNT-4			
266	CLASSROOM	ETR/RB-3	ETR	ETR/PNT-4			
268	CLASSROOM	ETR/MB-2/RB-3	ETR	ETR/PNT-4			MB-2 PAINTED TO MATCH EXISTING
332	SPEECH	ETR/MB-1/RB-3	ETR	PNT-4			MB-1 STAINED TO MATCH EXISTING
341	CLASSROOM	ETR/RB-5	ETR	ETR/PNT-4			
342	CLASSROOM	ETR/RB-5	ETR	ETR/PNT-4			
343	CLASSROOM	ETR/RB-5	ETR	ETR/PNT-4			
345	CLASSROOM	ETR/RB-5	ETR	ETR/PNT-4			
346	CLASSROOM	ETR/RB-5	ETR	ETR/PNT-4			
347	CLASSROOM	ETR/RB-5	ETR	ETR/PNT-4			
349	FAMILY & CONSUMER SCIENCE	ETR/RB-4	ETR	ETR/PNT-4			
C207	CORRIDOR	ETR/RB-3	ETR	ETR/PNT-4			
C302	CORRIDOR	ETR/RB-3	ETR	ETR/PNT-4			
C307	CORRIDOR	ETR/RB-3	ETR	ETR/PNT-4			

DISCLAIMER NOTE

MANUFACTURER'S NAMES AND FINISH INFORMATION ARE INDICATED AS REFERENCED TO THE ARCHITECT'S BASIS OF DESIGN SELECTIONS AND HAVE BEEN DETERMINED PRIOR TO BID. THE CONTRACTOR AND OWNER ARE HEREBY NOTIFIED THAT FINISHES INSTALLED IN THE WORK ARE SUBJECT TO CHANGE IN RESPONSE TO SUBMITTALS, CONFIRMED SELECTIONS, PRODUCT AVAILABILITY AND THE SUBSEQUENT COORDINATION OF FINISHES BY ARCHITECT AND MAY DIFFER FROM PRODUCTS LISTED HEREIN.

ABBREVIATIONS

ACMU	ARCHITECTURAL CONCRETE MASONRY UNIT
ACT	ACOUSTICAL CEILING TILE
APC	ACOUSTICAL PANEL CEILING
BBT	BIO-BASED TILE
BRK	BRICK
CFT	CERAMIC FLOOR TILE
CMU	CONCRETE MASONRY UNIT
CONC	CONCRETE
CPT	CARPET
CR	CHAIR RAIL
CTB	CERAMIC TILE BASE
CWT	CERAMIC WALL TILE
ETR	EXISTING TO REMAIN
EXP	EXPOSED
EXST	EXISTING
FAC/FF	FACTORY FINISH
GWB	GYPSUM WALL BOARD
LMC	LINEAR METAL CEILING
LVT	LUXURY VINYL TILE
MB	MILLWORK BASE
MSS	MUSIC STORAGE SYSTEM
MWP	METAL WALL PANEL
PCON	POLISHED CONCRETE
PLAM	PLASTIC LAMINATE
PLAS	PLASTER
PNT	PAINT
RAF	RESILIENT ATHLETIC FLOORING
RB	RUBBER BASE
RF	RESINOUS FLOORING
RT	RUBBER STAIR TREAD / LANDING
RT	RUBBER TILE FLOORING
SCONC	SEALED CONCRETE
SS	SOLID SURFACE
STF	SYNTHETIC TURF FLOORING
STL	STEEL
TERR	TERRAZZO
TP	TOILET PARTITIONS
TYP	TYPICAL
VCT	VINYL COMPOSITION TILE
VCTAS	VINYL COMPOSITION TILE ANTI-STATIC
VWC	VINYL WALLCOVERING
WAF	WOOD ATHLETIC FLOORING
WD	WOOD
WOM	WALK-OFF MAT

GENERAL FINISH NOTES

- ALL EXPOSED SURFACES OF NEW PARTITIONS ARE TO BE PAINTED.
- WHEN ANY WORK IS PERFORMED ON ANY EXISTING WALL, THE ENTIRE WALL SURFACE IS TO BE PAINTED CORNER TO CORNER, UNLESS NOTED OTHERWISE.
- ALL NEW GWB CEILINGS, FASCIAS, AND SOFFITS TO BE PAINTED.

FINISH KEYS

Room Name
[101]

Wall Finish

Base Finish

Floor Finish

= Finish Tag

PNT-#

ACCENT PAINT LOCATION

KEY PLAN

Copyright © All Rights Reserved

19 From St. - Newburgh - New York 12550-7601
845-561-3179 www.csarch.com



Consultant

CITY SCHOOL DISTRICT OF NEW ROCHELLE
ISAAC E YOUNG MIDDLE SCHOOL
2023 CAPITAL PROJECT - PHASE 2B

Project Title

REV.	DATE	DESCRIPTION

Drawn By: AS
Checked By: MZ
Proj. #: 66-11-00-81-0-003-018
CSArch Proj. #: 188-2301.02
Issued for Bid: 06/13/2025

Sheet Title

MATERIAL
AND ROOM
FINISH
SCHEDULE

Sheet No.

IEYMS
AF001

CONSTRUCTION DOCUMENTS

CONSTRUCTION DOCUMENTS

DISCLAIMER NOTE

MANUFACTURER'S NAMES AND FINISH INFORMATION ARE INDICATED AS REFERRED TO THE ARCHITECT'S BASIS-OF-DESIGN SELECTIONS AND HAVE BEEN DETERMINED PRIOR TO BID. THE CONTRACTOR AND OWNER ARE HEREBY NOTIFIED THAT FINISHES INSTALLED IN THE WORK ARE SUBJECT TO CHANGE IN RESPONSE TO SUBMITTALS, CONFIRMED BY THE ARCHITECT. PRODUCT AVAILABILITY AND THE SUBSEQUENT COORDINATION OF FINISHES BY ARCHITECT AND MAY DIFFER FROM PRODUCTS USED HEREIN.

ABBREVIATIONS

ACMU	ARCHITECTURAL CONCRETE MASONRY UNIT
ACT	ACOUSTICAL CEILING TILE
APC	ACOUSTICAL PANEL CEILING
B8T	BIO-BASED TILE
BRK	BRICK
CTF	CERAMIC FLOOR TILE
CMU	CONCRETE MASONRY UNIT
CONC	CONCRETE
CPT	CARPET
CR	CHAIR RAIL
CTB	CERAMIC TILE BASE
CWT	CERAMIC WALL TILE
EXT	EXISTING TO REMAIN
EXP	EXPOSED
EXST	EXISTING
FAC/FACF	FACTORY FINISH
GWB	GYPSUM WALL BOARD
LMT	LINEAR METAL CEILING
LVC	LUXURY VINYL TILE
MB	MILLWORK BASE
MSS	MUSIC STORAGE SYSTEM
MWP	METAL WALL PANEL
PCON	POLISHED CONCRETE
PLAM	PLASTIC LAMINATE
PLAS	PLASTER
PNT	PAINT
RAF	RESILIENT ATHLETIC FLOORING
RB	RUBBER BASE
RF	RESINOUS FLOORING
RST	RUBBER STAIR TREAD / LANDING
RT	RUBBER TILE FLOORING
SCONC	SEALED CONCRETE
SS	SOLID SURFACE
STF	SYNTHETIC TURF FLOORING
STL	STEEL
TERR	TERRAZZO
TPP	TOILET PARTITIONS
TYP	TYPICAL
VCT	VINYL COMPOSITION TILE
VCTAS	VINYL COMPOSITION TILE ANTI-STATIC
VWC	VINYL WALLCOVERING
WAF	WOOD ATHLETIC FLOORING
WD	WOOD
WOM	WALK-OFF MAT

FINISH KEYS

Room Name
[101]

Wall Finish
Base Finish
Floor Finish

= Finish Tag

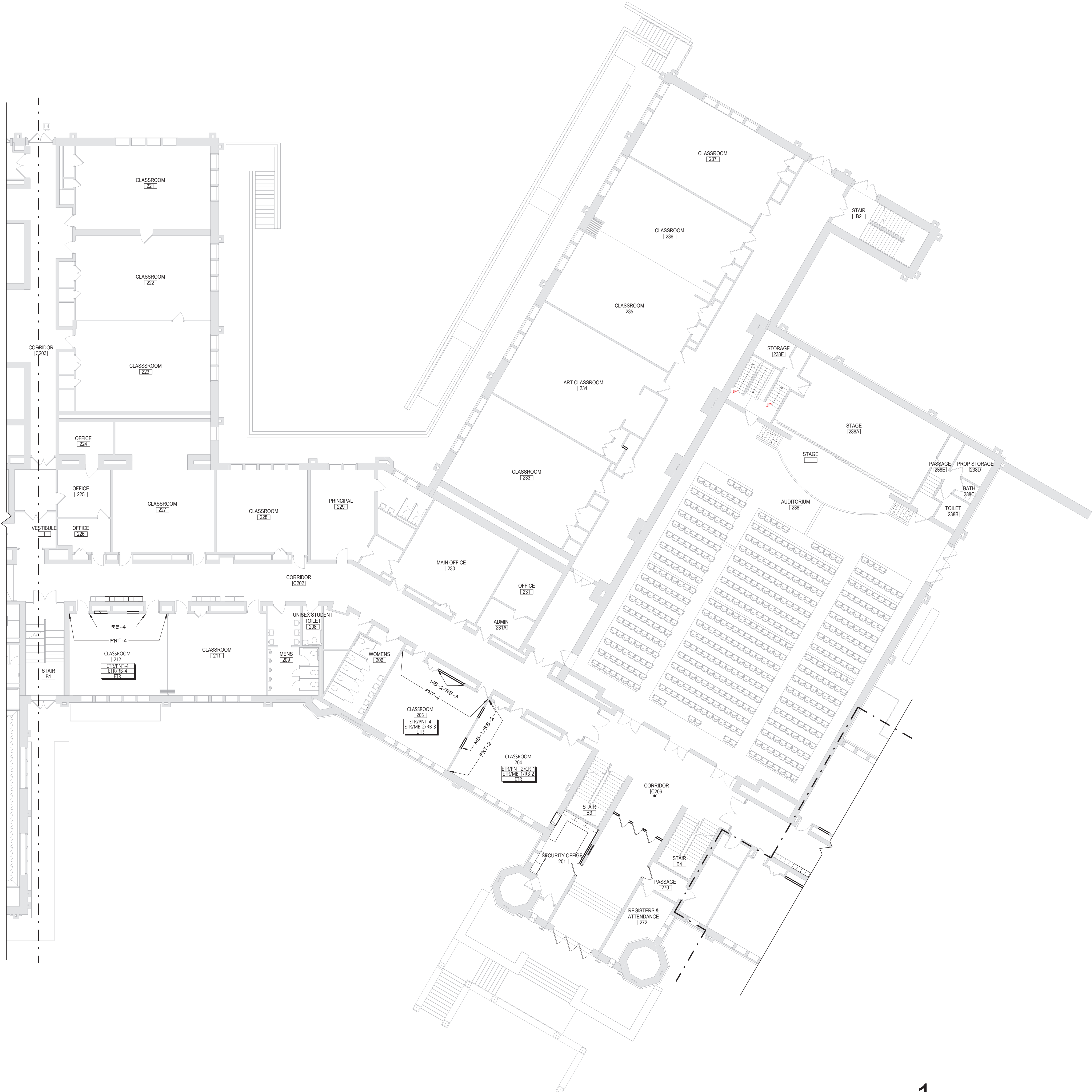
PNT-#

ACCENT PAINT LOCATION

A key plan map showing the site location. The site is a shaded, irregularly shaped area labeled 'C'. It is situated to the east of a larger, white, cross-shaped area. A north arrow is located in the bottom left corner of the map.

Sheet No. IEYMS
AF106
CONSTRUCTION DOCUMENTS

C:\Users\collura\Documents\189-2001_ISAAC_E_YOUNG_MS_collura\XARE.rvt



1 AREA 'B' FIRST FLOOR FINISH PLAN
AF112 3/32" = 1'-0"

DISCLAIMER NOTE

MANUFACTURER'S NAMES AND FINISH INFORMATION ARE INDICATED AS REFERENCED TO THE ARCHITECT'S BASIS OF DESIGN SELECTIONS AND HAVE BEEN DETERMINED PRIOR TO BID. THE CONTRACTOR AND OWNER ARE HEREBY NOTIFIED THAT FINISHES INSTALLED IN THE WORK ARE SUBJECT TO CHANGE IN RESPONSE TO SUBMITTALS, CONFIRMED SELECTIONS, PRODUCT AVAILABILITY AND THE SUBSEQUENT COORDINATION OF FINISHES BY ARCHITECT AND MAY DIFFER FROM PRODUCTS LISTED HEREIN.

ABBREVIATIONS

ACMU	ARCHITECTURAL CONCRETE MASONRY UNIT
ACT	ACOUSTICAL CEILING TILE
APC	ACOUSTICAL PANEL CEILING
BBT	BIO-BASED TILE
BRK	BRICK
CFT	CERAMIC FLOOR TILE
CMU	CONCRETE MASONRY UNIT
CONC	CONCRETE
CPT	CARPET
CR	CHAIR RAIL
CTB	CERAMIC TILE BASE
CWT	CERAMIC WALL TILE
ETR	EXISTING TO REMAIN
EXP	EXPOSED
EXST	EXISTING
FAC/FF	FACTORY FINISH
GWB	GYPSUM WALL BOARD
LMC	LINEAR METAL CEILING
LVT	LUXURY VINYL TILE
MB	MILLWORK BASE
MSS	MUSIC STORAGE SYSTEM
MWP	METAL WALL PANEL
PCON	POLISHED CONCRETE
PLAM	PLASTIC LAMINATE
PLAS	PLASTER
PNT	PAIN
RAF	RESILIENT ATHLETIC FLOORING
RB	RUBBER BASE
RF	RESINOUS FLOORING
RST	RUBBER STAIR TREAD / LANDING
RT	RUBBER TILE FLOORING
SCONC	SEALED CONCRETE
SS	SOLID SURFACE
STF	SYNTHETIC TURF FLOORING
STL	STEEL
TERR	TERRAZZO
TP	TOILET PARTITIONS
TYP	TYPICAL
VCT	VINYL COMPOSITION TILE
VCTAS	VINYL COMPOSITION TILE ANTI-STATIC
VWC	VINYL WALLCOVERING
WAF	WOOD ATHLETIC FLOORING
WD	WOOD
WOM	WALK-OFF MAT

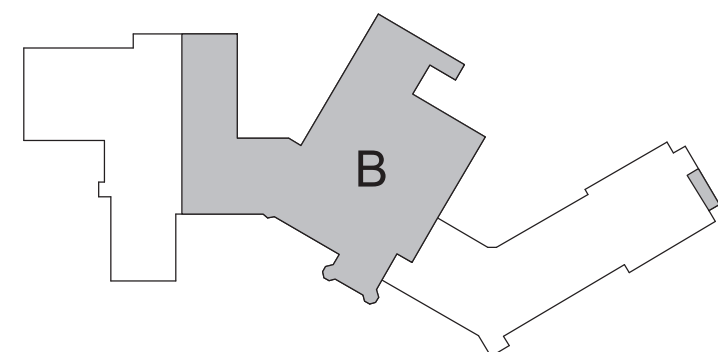
GENERAL FINISH NOTES

- ALL EXPOSED SURFACES OF NEW PARTITIONS ARE TO BE PAINTED.
- WHEN ANY WORK IS PERFORMED ON ANY EXISTING WALL, THE ENTIRE WALL SURFACE IS TO BE PAINTED CORNER TO CORNER, UNLESS NOTED OTHERWISE.
- ALL NEW GWB CEILINGS, FASCIAS, AND SOFFITS TO BE PAINTED.

FINISH KEYS

Room Name	[101]
Wall Finish	[101]
Base Finish	[101]
Floor Finish	[101]
	= Finish Tag
PNT-#	ACCENT PAINT LOCATION

KEY PLAN



19 Front St., Newburgh, New York 12550-7601
845.561.1317 www.csarch.com

Consultant

CITY SCHOOL DISTRICT OF NEW ROCHELLE
ISAAC E YOUNG MIDDLE SCHOOL
2023 CAPITAL PROJECT - PHASE 2B

Project Title



DATE	DESCRIPTION

Drawn By:	AS
Checked By:	MZ
Proj. #:	66-11-00-81-0-003-018
CSArch Proj. #:	188-2301.02
Issued for Bid:	06/13/2025

Sheet Title

AREA 'B' -
PARTIAL FIRST
FLOOR FINISH
PLAN

Sheet No.

IEYMS
AF112

CONSTRUCTION DOCUMENTS

COPYRIGHT © ALL RIGHTS RESERVED

C:\Users\collura\Documents\189-2301_ISAAC_E_YOUNG_MS_collura\XARE.rvt



1 AREA 'C' FIRST FLOOR FINISH PLAN
AF116 3/32" = 1'-0"

DISCLAIMER NOTE	
MANUFACTURER'S NAMES AND FINISH INFORMATION ARE INDICATED AS REFERENCED TO THE ARCHITECT'S BASIS OF DESIGN SELECTIONS AND HAVE BEEN DETERMINED PRIOR TO BID. THE CONTRACTOR AND OWNER ARE HEREBY NOTIFIED THAT FINISHES INSTALLED IN THE WORK ARE SUBJECT TO CHANGE IN RESPONSE TO SUBMITTALS, CONFIRMED SELECTIONS, PRODUCT AVAILABILITY AND THE SUBSEQUENT COORDINATION OF FINISHES BY ARCHITECT AND MAY DIFFER FROM PRODUCTS LISTED HEREIN.	
ABBREVIATIONS	
ACMU	ARCHITECTURAL CONCRETE MASONRY UNIT
ACT	ACOUSTICAL CEILING TILE
APC	ACOUSTICAL PANEL CEILING
BBT	BIO-BASED TILE
BRK	BRICK
CPT	CERAMIC FLOOR TILE
CMU	CONCRETE MASONRY UNIT
CONC	CONCRETE
CPT	CARPET
CR	CHAIR RAIL
CTB	CERAMIC TILE BASE
CWT	CERAMIC WALL TILE
ETR	EXISTING TO REMAIN
EXP	EXPOSED
EXST	EXISTING
FAC/FF	FACTORY FINISH
GWB	GYPSUM WALL BOARD
LMC	LINEAR METAL CEILING
LVT	LUXURY VINYL TILE
MB	MILLWORK BASE
MSS	MUSIC STORAGE SYSTEM
MWP	METAL WALL PANEL
PCON	POLISHED CONCRETE
PLAM	PLASTIC LAMINATE
PLAS	PLASTER
PNT	PAINT
RAF	RESILIENT ATHLETIC FLOORING
RB	RUBBER BASE
RF	RESINOUS FLOORING
RST	RUBBER STAIR TREAD / LANDING
RT	RUBBER TILE FLOORING
SCONC	SEALED CONCRETE
SS	SOLID SURFACE
STF	SYNTHETIC TURF FLOORING
STL	STEEL
TERR	TERRAZZO
TP	TOILET PARTITIONS
TYP	TYPICAL
VCT	VINYL COMPOSITION TILE
VCTAS	VINYL COMPOSITION TILE ANTI-STATIC
VWC	VINYL WALLCOVERING
WAF	WOOD ATHLETIC FLOORING
WD	WOOD
WOM	WALK-OFF MAT

- GENERAL FINISH NOTES
- ALL EXPOSED SURFACES OF NEW PARTITIONS ARE TO BE PAINTED.
 - WHEN ANY WORK IS PERFORMED ON ANY EXISTING WALL, THE ENTIRE WALL SURFACE IS TO BE PAINTED CORNER TO CORNER, UNLESS NOTED OTHERWISE.
 - ALL NEW GWB CEILINGS, FASCIAS, AND SOFFITS TO BE PAINTED.

FINISH KEYS	
Room Name [101]	
Wall Finish Base Finish Floor Finish	= Finish Tag
PNT-#	ACCENT PAINT LOCATION

KEY PLAN

AREA 'C' - PARTIAL FIRST FLOOR FINISH PLAN

Sheet No. IEYMS AF116

CONSTRUCTION DOCUMENTS

19 Front St., Newburgh, New York 12550-7601
845-561-1317 www.csarch.com

Consultant

CITY SCHOOL DISTRICT OF NEW ROCHELLE
ISAAC E YOUNG MIDDLE SCHOOL
2023 CAPITAL PROJECT - PHASE 2B

Project Title



DATE	DESCRIPTION

Drawn By:	AS
Checked By:	MZ
Proj. #:	66-11-00-81-0-003-018
CSArch Proj. #:	188-2301.02
Issued for Bid:	06/13/2025

Sheet Title

AREA 'C' - PARTIAL FIRST FLOOR FINISH PLAN

Sheet No. IEYMS AF116

CONSTRUCTION DOCUMENTS

CSARCH

DISCLAIMER NOTE	
MANUFACTURER'S NAMES AND FINISH INFORMATION ARE INDICATED AND REFERENCED TO THE ARCHITECT'S BASIS OF DESIGN SELECTION AND HAVE BEEN DETERMINED PRIOR TO BID. THE CONTRACTOR AND OWNER ARE HEREBY NOTIFIED THAT FINISHES INSTALLED IN THE WORK ARE SUBJECT TO CHANGE IN RESPONSE TO SUBMITTALS. CONFIRMED SELECTIONS, AVAILABILITY AND THE SUBSEQUENT COORDINATION OF FINISHES BY ARCHITECT AND MAY DIFFER FROM PRODUCTS LISTED HEREIN.	
ABBREVIATIONS	
ACMU	ARCHITECTURAL CONCRETE MASONRY UNIT
ACT	ACOUSTICAL CEILING TILE
ACP	ACETIC/PANEL CEILING
BB	BIOS-BASED TILE
BRK	BRICK
CTF	CERAMIC FLOOR TILE
CMU	CONCRETE MASONRY UNIT
CWC	CORNER
CPT	CARPET
CR	CHAIR RAIL
CTB	CERAMIC TILE BASE
CWT	CERAMIC WALL TILE
ETR	EXISTING TO REMAIN
EXST	EXISTING
FAC/FF	FACTORY FINISH
GWB	GYPSUM WALL BOARD
LMC	LINEAR METAL CEILING
LVT	LUXURY VINYL TILE
ML	MILLWORK BASE
MS	MUSIC STORAGE SYSTEM
MWR	METAL WALL PANEL
PCON	POLISHED CONCRETE
PLAM	PLASTIC LAMINATE
PLAS	PLASTER
PNT	PAINT
RAF	RESILIENT ATHLETIC FLOORING
RB	RESIN BASE
RF	RESINOUS FLOORING
RT	RUBBER STAIR TREAD / LANDING
RST	RUBBER TILE FLOORING
SCON	SEALED CONCRETE
SS	SOLID SURFACE
STF	SYNTHETIC TURF FLOORING
STL	STEEL
TERR	TERRAZZO
TP	TOILET PARTITION
TYP	TYPICAL
VCT	VINYL COMPOSITION TILE
VCTAS	VINYL COMPOSITION TILE ANTI-STATIC
VWC	VINYL WALLCOVERING
WAF	WOOD ATHLETIC FLOORING
WD	WOOD
WOM	WALK-OFF MAT

GENERAL FINISH NOTES	
1.	ALL EXPOSED SURFACES OF NEW PARTITIONS ARE TO BE PAINTED.
2.	WHEN ANY WORK IS PERFORMED ON ANY EXISTING WALL, THE ENTIRE WALL SURFACE IS TO BE PAINTED CORNER TO CORNER, UNLESS NOTED OTHERWISE.
3.	ALL NEW GWB CEILINGS, FASCIAS, AND SOFFITS TO BE PAINTED.

FINISH KEYS

Room Name
101

Wall Finish
Base Finish
Floor Finish

= Finish Tag

PNT-#

ACCENT PAINT LOCATION

KEY PLAN

A key plan map showing the location of the site (shaded grey) within the larger context of the surrounding area. The site is labeled 'B'. A north arrow is present in the bottom left corner.

C:\Users\collura\Documents\189-2001_ISAAC_E_YOUNG_MS_collura\XARE.rvt



1 AREA 'C' SECOND FLOOR FINISH PLAN
AF126 3/32" = 1'-0"

DISCLAIMER NOTE

MANUFACTURER'S NAMES AND FINISH INFORMATION ARE INDICATED AS REFERENCED TO THE ARCHITECT'S BASIS OF DESIGN SELECTIONS AND HAVE BEEN DETERMINED PRIOR TO BID. THE CONTRACTOR AND OWNER ARE HEREBY NOTIFIED THAT FINISHES INSTALLED IN THE WORK ARE SUBJECT TO CHANGE IN RESPONSE TO SUBMITTALS, CONFIRMED SELECTIONS, PRODUCT AVAILABILITY AND THE SUBSEQUENT COORDINATION OF FINISHES BY ARCHITECT AND MAY DIFFER FROM PRODUCTS LISTED HEREIN.

ABBREVIATIONS

ACMU	ARCHITECTURAL CONCRETE MASONRY UNIT
ACT	ACOUSTICAL CEILING TILE
APC	ACOUSTICAL PANEL CEILING
BBT	BIO-BASED TILE
BRK	BRICK
CPT	CERAMIC FLOOR TILE
CMU	CONCRETE MASONRY UNIT
CONC	CONCRETE
CPT	CARPET
CR	CHAIR RAIL
CTB	CERAMIC TILE BASE
CWT	CERAMIC WALL TILE
ETR	EXISTING TO REMAIN
EXP	EXPOSED
EXST	EXISTING
FAC/FF	FACTORY FINISH
GW8	GYPSUM WALL BOARD
LMC	LINEAR METAL CEILING
LVT	LUXURY VINYL TILE
MB	MILLWORK BASE
MSS	MUSIC STORAGE SYSTEM
MWP	METAL WALL PANEL
PCON	POLISHED CONCRETE
PLAM	PLASTIC LAMINATE
PLAS	PLASTER
PNT	PAINT
RAF	RESILIENT ATHLETIC FLOORING
RB	RUBBER BASE
RF	RESINOUS FLOORING
RST	RUBBER STAIR TREAD / LANDING
RT	RUBBER TILE FLOORING
SCONC	SEALED CONCRETE
SS	SOLID SURFACE
STF	SYNTHETIC TURF FLOORING
STL	STEEL
TERR	TERRAZZO
TP	TOILET PARTITIONS
TYP	TYPICAL
VCT	VINYL COMPOSITION TILE
VCTAS	VINYL COMPOSITION TILE ANTI-STATIC
VWC	VINYL WALLCOVERING
WAF	WOOD ATHLETIC FLOORING
WD	WOOD
WOM	WALK-OFF MAT

GENERAL FINISH NOTES

- ALL EXPOSED SURFACES OF NEW PARTITIONS ARE TO BE PAINTED.
- WHEN ANY WORK IS PERFORMED ON ANY EXISTING WALL, THE ENTIRE WALL SURFACE IS TO BE PAINTED CORNER TO CORNER, UNLESS NOTED OTHERWISE.
- ALL NEW GWB CEILINGS, FASCIAS, AND SOFFITS TO BE PAINTED.

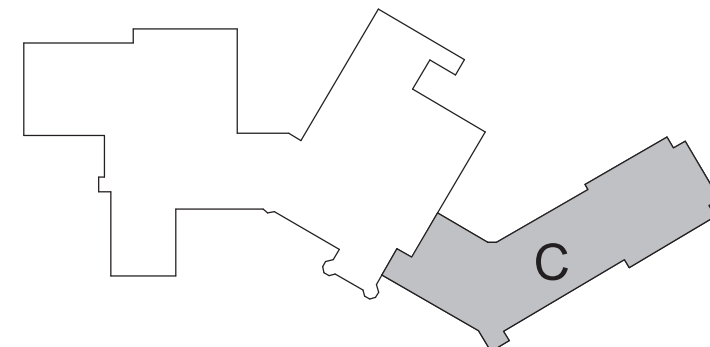
FINISH KEYS

Room Name	Finish Tag
[101]	
Wall Finish	
Base Finish	
Floor Finish	

= Finish Tag

PNT-# ACCENT PAINT LOCATION

KEY PLAN



19 Front St., Newburgh, New York 12550-7601
845.561.1379 www.csarch.com

Consultant

CITY SCHOOL DISTRICT OF NEW ROCHELLE
ISAAC E YOUNG MIDDLE SCHOOL
2023 CAPITAL PROJECT - PHASE 2B

Project Title



DATE	DESCRIPTION

Drawn By:	AS
Checked By:	MZ
Proj. #:	66-11-00-81-0-003-018
CSArch Proj. #:	188-2301.02
Issued for Bid:	06/13/2025

Sheet Title
AREA 'C' -
PARTIAL
SECOND
FLOOR FINISH
PLAN

Sheet No.
IEYMS
AF126

CONSTRUCTION DOCUMENTS

COPYRIGHT © ALL RIGHTS RESERVED