

ABBREVIATIONS: (SOME MAY NOT BE USED)

A	AMP	DSP	GARBAGE DISPOSAL	HH	HAND HOLE
AC	ABOVE COUNTER	DW	DISHWASHER	HOA	HAND-OFF-AUTO SWITCH
ACC	AIR COOLED CONDENSING UNIT	DWG	DRAWING	HP	HORSEPOWER
ACP	ACCESS CONTROL PANEL	EC	ELECTRICAL CONTRACTOR	HVAC	HEATING, VENTILATION AND/OR AIR CONDITIONING
AFCI	ARC FAULT CIRCUIT INTERRUPTER	ECB	ENCLOSED CIRCUIT BREAKER	IG	ISOLATED GROUND
AF	ABOVE FINISHED FLOOR	EM	EMERGENCY	IN	INCHES
AFG	ABOVE FINISHED GRADE	EMT	ELECTRICAL METALLIC TUBING	INT	INTERNAL
AHU	AIR HANDLING UNIT	ELU	EMERGENCY LIGHTING UNIT	IT	INFORMATION TECHNOLOGIES
AWG	AMERICAN WIRE GAGE	ES	ELECTRIC STRIKE	JB	JUNCTION BOX
BFG	BELOW FINISHED GRADE	EXR	EXISTING TO REMAIN	K	KILO
BLDG	BUILDING	FA	FIRE ALARM	KVA	KILO-VOLT AMPERE
BTU	BRITISH THERMAL UNITS	FAAP	FIRE ALARM ANNUNCIATOR PANEL	KW	KILOWATT
C	CONDUIT	FACP	FIRE ALARM CONTROL PANEL	LBS	POUNDS
CAT	CATEGORY	FTC	FIBER OPTIC CABLE CROSS CONNECT CABINET	LV	LOW VOLTAGE
CB	CIRCUIT BREAKER	FLA	FULL LOAD AMPS	MAX	MAXIMUM
CFM	CUBIC FEET PER MINUTE	FLR	FLOOR	MC	METAL CLAD CABLE
CKT	CIRCUIT	FT	FEET	MCB	MAIN CIRCUIT BREAKER
COMM	COMMUNICATION	FTL	FEED THRU LUGS	MS	MOTOR STARTING
CONT.	CONTINUED	FVNR	FULL VOLTAGE NON-REVERSING	MH	MOUNTING HEIGHT
CT	CURRENT TRANSFORMER	G	GROUND	MIN	MINIMUM
CU	COPPER	GC	GENERAL CONTRACTOR	MLO	MAIN LUGS ONLY
CUH	CABINET UNIT HEATER	GFI	GROUND FAULT CIRCUIT INTERRUPTER	MM	MULTIMODE FIBER OPTIC CABLE
CVT	CONTROL VOLTAGE TRANSFORMER	GPM	GALLONS PER MINUTE	MTG	MOUNTING
DDC	DIRECT DIGITAL CONTROL	H	HEIGHT		
DLC	DESIGN LIGHTS CONSORTIUM	HC	HANDICAP ACCESSIBLE		

SYMBOLS LEGEND:

	SURFACE MOUNTED PANEL
	RECESSED PANEL
	JUNCTION BOX
	HOME RUN TO PANEL. 2#12, #12G, 3/4" UNLESS OTHERWISE NOTED. PROVIDE SEPARATE GROUND AND NEUTRAL FOR EACH BRANCH CIRCUIT. 'X'-INDICATES PANEL. 'Z, Y'-INDICATES CIRCUIT NUMBERS
	CIRCUIT CONTINUATION WITH 'Y' INDICATING DEVICE OR AREA DESCRIPTION. 'X'-INDICATES PANEL. 'Z, Y'-INDICATES CIRCUIT NUMBERS
	CIRCUIT CONSISTING OF GROUND, NEUTRAL AND PHASE CONDUCTORS. ADDITIONAL SLASH MARKS INDICATE SWITCHING OR TRAVELER CONDUCTORS, AND A LONG SOLID LINE INDICATES NEUTRAL. A SEPARATE GREEN GROUND CONDUCTOR SHALL BE PLACED IN ALL NEW CIRCUITS
	CONNECTION POINT
	CAPPED CONDUIT
	CONDUIT TURNED DOWN
	CONDUIT TURNED UP
	LINE TYPE SHOWING WIRING BETWEEN LOW VOLTAGE DEVICES
	SINGLE POLE SWITCH. 20 AMP 120/277 UNLESS NOTED OTHERWISE. 'PRV'-INDICATES FAN CONTROL SWITCH. 'P'-INDICATES PILOT LIGHT. 'MS'-INDICATES 1HP RATED GENERAL USE 'SNAP SWITCH' WITH OVERLOADS SIZED FOR EQUIPMENT AND LOCKABLE HASP. '3MS'-INDICATES 3 POLE 600 VOLT 30 AMP 3HP RATED MANUAL MOTOR STARTER WITH LOCKABLE HASP. 'WP'-INDICATES WEATHER PROOF. '3'-INDICATES THREE WAY SWITCH. '4'-INDICATES FOUR WAY SWITCH. 'K'-INDICATES KEYSWITCH. 'LV'-INDICATES LOW VOLTAGE MOMENTARY SWITCH. 'LV6'-INDICATES LOW VOLTAGE MULTIFUNCTION DIMMING SWITCH, 6-BUTTON. 'VS'-INDICATES VACANCY SENSOR SWITCH. 'VS2'-INDICATES 2 POLE WALL MOUNTED VACANCY SENSOR SWITCH. 'D'-INDICATES DIMMER SWITCH. 'LVD'-INDICATES LOW VOLTAGE MULTIFUNCTION DIMMING SWITCH. 'VSD'-INDICATES DIMMING VACANCY SENSOR SWITCH. 'SP'-INDICATES SPEAKER CONTROL.
	NEMA 1 NON-FUSED DISCONNECT UON. 'XX'-INDICATES DISCONNECT SIZE. 'Y'-NUMBER OF POLES.
	NEMA 1 FUSED DISCONNECT UON. 'XX'-INDICATES DISCONNECT SIZE. 'Y'-NUMBER OF POLES. 'ZZ'-FUSE SIZE.
	COMBINATION MOTOR STARTER, SIZE AS INDICATED. 'XX'-INDICATES DISCONNECT SIZE. 'Y'-NUMBER OF POLES. 'ZZ'-FUSE SIZE. 'NF'-NON-FUSED.

VFD	VARIABLE FREQUENCY DRIVE. HP AS INDICATED
VFD	COMBINATION NON-FUSED DISCONNECT VARIABLE FREQUENCY DRIVE. HP AS INDICATED
	DUPLEX RECEPTACLE. 'GFI'-INDICATES GROUND FAULT CIRCUIT INTERRUPTER. 'AFI'-INDICATES ARC FAULT CIRCUIT INTERRUPTER. 'WP'-WEATHER-PROOF. 'AC'-INDICATES ABOVE COUNTER, VERIFY HEIGHT. 'SR'-INDICATES SURFACE RACEWAY.
	ABOVE COUNTER GFI DUPLEX RECEPTACLE, VERIFY HEIGHT
	QUADRUPLEX RECEPTACLE
	SIMPLEX RECEPTACLE
	SPECIAL RECEPTACLE, TYPE AS INDICATED
	DUPLEX RECEPTACLE WITH 2-USB CHARGING PORTS, 3.6 AMP SMART OUTPUT. LEVITON T5832 OR EQUAL
	Ceiling Mounted Duplex Receptacle. 'DC'-INDICATES DROP CORD
	FLUSH FLOOR MOUNTED DUPLEX RECEPTACLE
	FLUSH FLOOR MOUNTED QUADRUPLEX RECEPTACLE
	TELEPHONE OUTLET MOUNTED AT 48" UON WITH 1" CONDUIT UP TO ABOVE CEILING. 1-PORT IN FACEPLATE UON. PROVIDE 1-CAT 6 CABLE UON
	DATA OUTLET WITH 1" CONDUIT UP TO ABOVE CEILING. 1-PORT IN FACEPLATE UON. PROVIDE 1-CAT 6 CABLE UON
	TELE/DATA OUTLET WITH 1" CONDUIT UP TO ABOVE CEILING. 2-PORTS IN FACEPLATE. PROVIDE 2-CAT 6 CABLES
	Ceiling Mounted Data Outlet. 1-PORT IN FACEPLATE UON. PROVIDE 1-CAT 6 CABLE UON
	FLUSH FLOOR MOUNTED DATA OUTLET WITH 1" CONDUIT UP TO ABOVE CEILING. 2-PORTS IN FACEPLATE UON. PROVIDE 2-CAT 6 CABLE UON
	Ceiling Mounted WiFi Antenna. PROVIDE CABLE ABOVE CEILING. PROVIDE 1 CAT 6 CABLE WITH 10' SERVICE LOOP. FOR NON-ACCESSIBLE CEILINGS. INSTALL LOW VOLTAGE RING WALL MOUNTED AT 84" UON.
HAV	WALL MOUNTED 4" SQUARE JUNCTION BOX, EXTRA DEEP FOR AV CABLE PROVIDE 2-1 1/2" CONDUITS TO ABOVE
AV	CEILING CEILING MOUNTED 4" SQUARE JUNCTION BOX, EXTRA DEEP FOR AV CABLE PROVIDE 2-1" CONDUITS TO ABOVE CEILING
AV	FLUSH FLOOR MOUNTED 4" SQUARE FLOOR BOX, EXTRA DEEP FOR AV CABLE PROVIDE 2-1 1/2" CONDUITS TO ABOVE CEILING
TV	CABLE TV OUTLET WITH 1" CONDUIT UP TO ABOVE CEILING. 1 PORT IN FACEPLATE. PROVIDE 1 RG-6/U COAXIAL CABLE

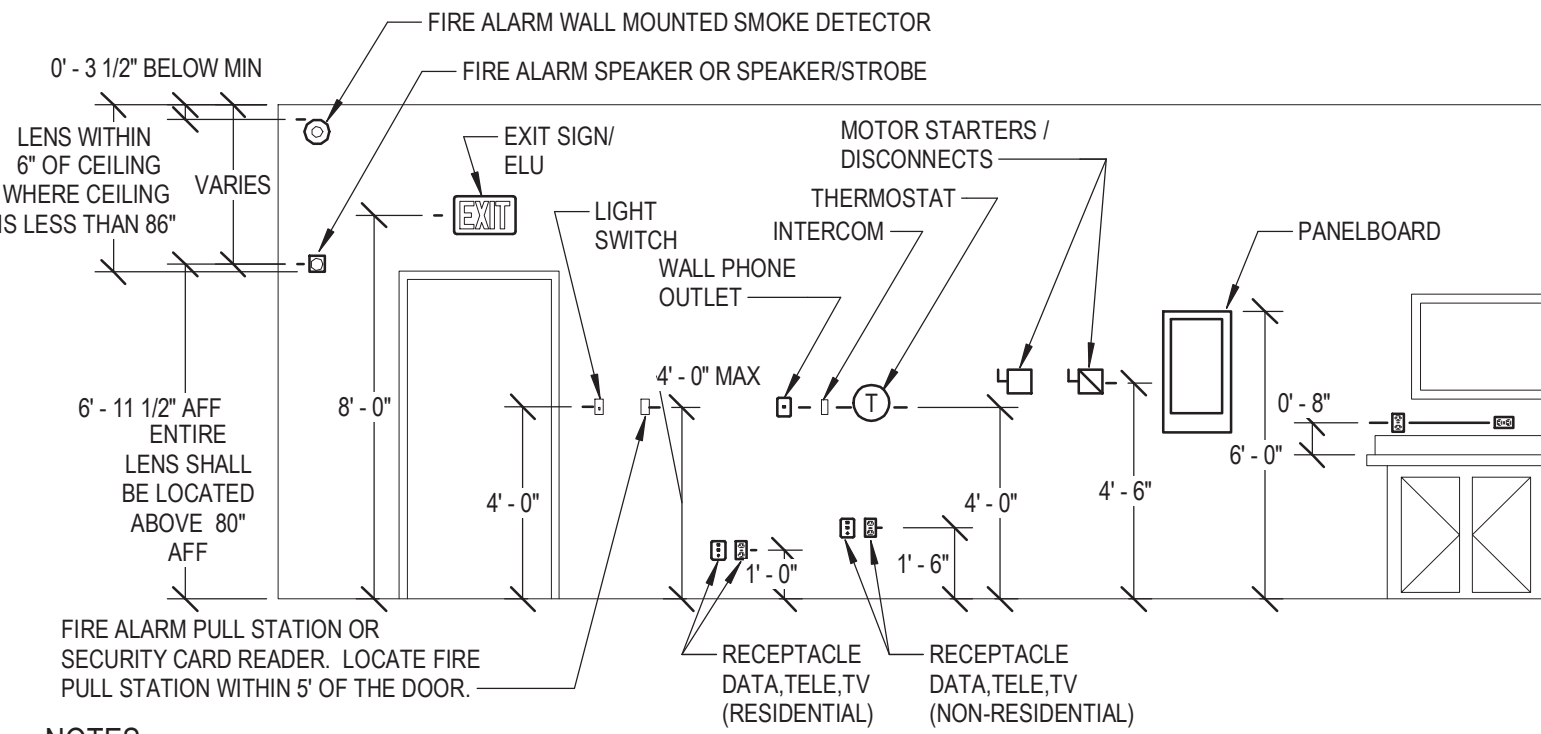
	WALL OR CEILING MOUNTED SPEAKER PA SYSTEM
	WALL OR CEILING MOUNTED SOUND SYSTEM/THEATRICAL SPEAKER
	TELEPHONE BACKBOARD. FIRE RETARDANT PLYWOOD PAINTED WITH 2 COATS GRAY FIRE RETARDANT PAINT
GB	GROUNDING BAR
	FIRE ALARM CONTROL PANEL
	REMOTE ANNUNCIATOR PANEL
	PULL STATION
	WALL MOUNTED OR CEILING MOUNTED SMOKE DETECTOR. PHOTOELECTRIC UON
	SMOKE DETECTOR WITH CARBON MONOXIDE BASE
	HEAT DETECTOR. RATE OF RISE, FIXED TEMPERATURE 135° F
	CARBON MONOXIDE DETECTOR
	PHOTOELECTRIC DUCT SMOKE DETECTOR DUCT SMOKE
	REMOTE INDICATOR AND TEST STATION
	FIRE SMOKE DAMPER
	WALL MOUNTED STROBE ONLY NOTIFICATION APPLIANCE. 15 CANDELA UNLESS NOTED OTHERWISE. 'X'-INDICATES CANDELA RATING STROBE UON
	CEILING MOUNTED STROBE ONLY NOTIFICATION APPLIANCE. 110 CANDELA UNLESS NOTED OTHERWISE. 'X'-INDICATES CANDELA RATING STROBE UON
	WALL MOUNTED FIRE ALARM HORN ONLY
	WALL MOUNTED FIRE ALARM COMBINATION HORN/STROBE. 15 CANDELA UNLESS NOTED OTHERWISE. 'X'-INDICATES CANDELA RATING STROBE UON
	CEILING MOUNTED FIRE ALARM SPEAKER
	DOOR HOLD OPEN DEVICE. 'F'-DESIGNATION INDICATES FLOOR MOUNTED
	FIRE ALARM CONTROL MODULE
	FIRE ALARM MONITOR MODULE
	SPRINKLER PRESSURE SWITCH
	SPRINKLER FLOW SWITCH
	SPRINKLER TAMPER SWITCH
	FIRE ALARM RELAY
	CEILING MOUNTED OCCUPANCY SENSOR. DUAL TECHNOLOGY ULTRASONIC/PIR UNLESS NOTED OTHERWISE. 'MP'-INDICATES MICROPHONICS. 'XR'-INDICATES EXTENDED RANGE
	LIGHTING POWER PACK
	CEILING OR WALL MOUNTED LED EXIT SIGN, PROVIDE DIRECTIONAL ARROWS AS SHOWN ON DRAWINGS
	CEILING OR WALL MOUNTED EMERGENCY LIGHTING UNIT
	CEILING OR WALL MOUNTED COMBINATION EXIT SIGN / EMERGENCY LIGHTING UNIT
	WALL MOUNTED LIGHT. SEE LIGHT FIXTURE SCHEDULE FOR TYPE
	WALL MOUNTED SCONCE. SEE LIGHT FIXTURE SCHEDULE FOR TYPE
	LINEAR WALL MOUNTED. SEE LIGHT FIXTURE SCHEDULE FOR TYPE
	LIGHT FIXTURE. SEE LIGHT FIXTURE SCHEDULE FOR TYPE
	BALLAST DIRECTION INDICATED FIXTURE. SEE LIGHT FIXTURE SCHEDULE FOR TYPE
	LINEAR VARIABLE LENGTH OR EXISTING FIXTURE. SEE LIGHT FIXTURE SCHEDULE FOR TYPE
	LINEAR PENDANT FIXTURE. SEE LIGHT FIXTURE SCHEDULE FOR TYPE
	DIRECTIONAL UPLIGHT OR WALLWASH FIXTURE. SEE LIGHT FIXTURE SCHEDULE FOR TYPE
	LINEAR STRIP FIXTURE. SEE LIGHT FIXTURE SCHEDULE FOR TYPE
	SURFACE DOWNLIGHT. SEE LIGHT FIXTURE SCHEDULE FOR TYPE
	RECESSED DOWNLIGHT. SEE LIGHT FIXTURE SCHEDULE FOR TYPE
	PENDANT MOUNTED FIXTURE. SEE LIGHT FIXTURE SCHEDULE FOR TYPE
	ROOFTOP MOUNTED FLOODLIGHT MOUNTED FIXTURE. SEE LIGHT FIXTURE SCHEDULE FOR TYPE
	SPOTLIGHT. SEE LIGHT FIXTURE SCHEDULE FOR TYPE
	ADDED TO A FIXTURE INDICATES EMERGENCY OR GENERATOR POWERED CIRCUIT. 'LS'-INDICATES LIFE SAFETY CIRCUIT. 'NL'-INDICATES NIGHT LIGHT
	ACCESS CONTROL PANEL
	CARD READER
	DOOR OPERATOR POWER CONNECTION
	MOTION SENSOR
	EGRESS SENSOR
	HANDICAP DOOR OPERATOR PUSH PAD ACTUATOR
	SECURITY CAMERA. PROVIDE 1 CAT 6 CABLE FOR CAMERA. CAMERA FURNISHED AND INSTALLED BY OWNER'S SECURITY VENDOR.

ELECTRICAL SPECIFICATIONS:

GENERAL:	1. ALL WORK SHALL BE DONE AS PER THE 2017 NATIONAL ELECTRICAL CODE, 2016 NATIONAL FIRE ALARM AND SIGNALING CODE, AND 2020 BUILDING CODE OF NEW YORK STATE AND ALL AMENDMENTS ADOPTED BY NEW YORK STATE, AND 2020 ENERGY CONSERVATION CONSTRUCTION CODE OF NEW YORK STATE.
FASTENINGS, SUPPORTS, AND HANGERS	1. ALL PARTS OF THE ELECTRICAL INSTALLATION SHALL BE ADEQUATELY SUPPORTED FROM THE BUILDING CONSTRUCTION USING APPROVED CLAMP SCREWS WITH THE INSERTS OF EXPANSION ANCHORS, EXPANSION BOLTS AND TOGGLE BOLTS * IN NO CASE SHALL THE HUNG CEILING MEMBERS OR WIRES BE USED TO SUPPORT CONDUIT*.
	2. FURNISH 12 GAUGE GALVANIZED STEEL CHANNEL AND ACCESSORIES AS MANUFACTURED BY KINDORF ELEC.; B-9000 (12" X 12"), B-901 (12" X 1F"), B-902 (12" X 3") OR APPROVED EQUAL.
CONDUIT:	1. ALL WIRING SHALL BE INSTALLED CONCEALED, WHERE POSSIBLE, USING EMT ABOVE 10 FEET. WHERE BELOW 10 FEET AND SUBJECT TO DAMAGE USE RIGID GALVANIZED STEEL CONDUIT.
	2. CONDUIT FITTINGS SHALL BE STEEL, COMPRESSION TYPE.
	3. MINIMUM SIZE SHALL BE ½".
	4. ALL CONDUITS SHALL BE RUN PARALLEL AND/OR PERPENDICULAR TO WALLS AND CEILINGS SUPPORT
	5. LIQUID TIGHT FLEXIBLE METAL CONDUIT MAY BE USED FOR FINAL CONNECTION NOT EXCEEDING 36" IN LENGTH.
METAL-CLAD CABLE:	1. METAL-CLAD CABLE MAY BE USED AS FIXTURE WHIPS. MAXIMUM LENGTH 6' AND WHERE CONDUCTORS MUST BE 'FISHED' THROUGH WALLS. MINIMUM WIRE SIZE SHALL BE #12 AWG.

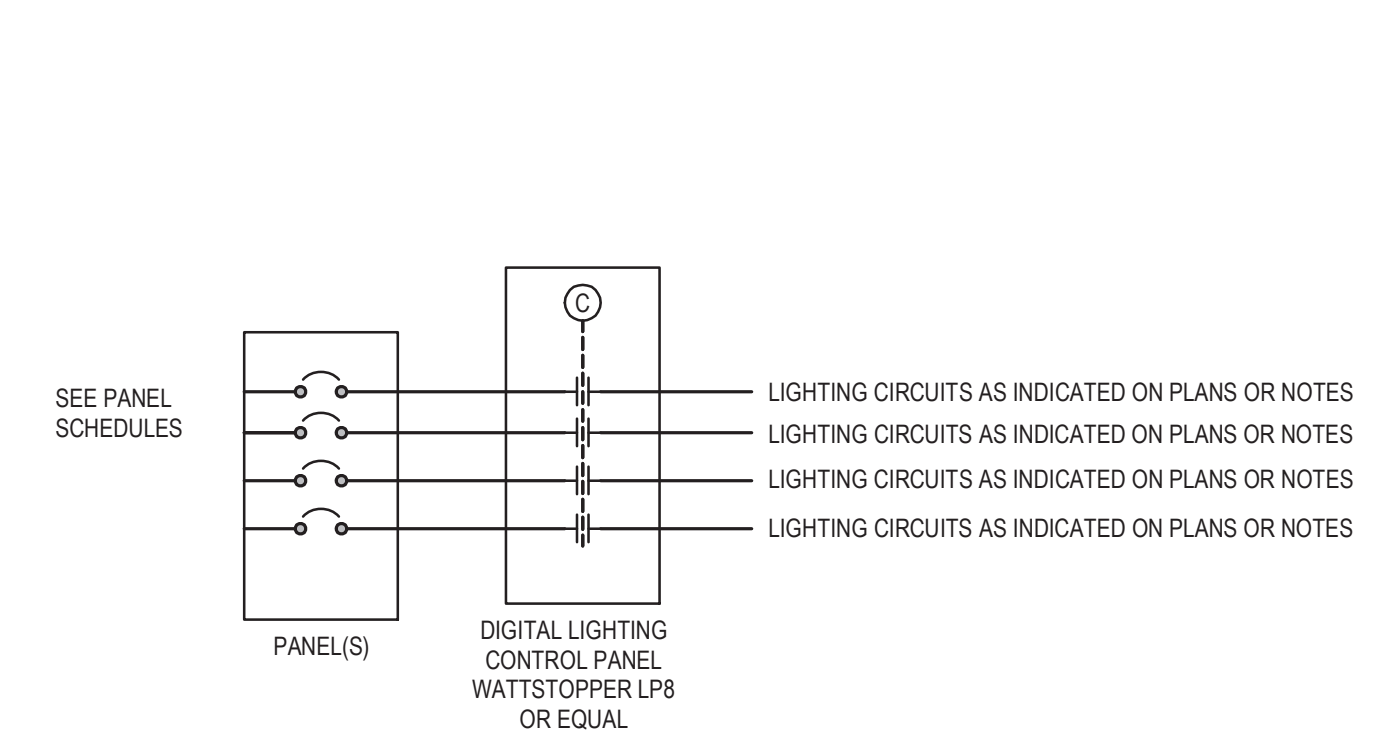
BOXES:	1. ALL BOXES SHALL BE STAMPED STEEL TYPE, 4" X 4" X 2 1/8" DEEP.
	2. PULL BOXES SHALL STEEL WITH SCREW COVERS.
	3. BOX DEVICE COVERS USED IN UNFINISHED AREAS SHALL BE RAISED STEEL.
	4. JUNCTION AND PULL BOXES LOCATED OUTDOORS AND IN DAMP LOCATIONS SHALL BE GALVANIZED CAST IRON WITH THREADED HUBS AND GASKETS.
WIRE AND CABLE:	1. ALL WIRE SHALL BE COPPER, RATED 600 VOLTS, TYPE THWN OR THHW MINIMUM SIZE #12 FOR BRANCH CIRCUIT WIRING AND MINIMUM SIZE #14 FOR CONTROL WIRING, UNLESS OTHERWISE SPECIFIED. FOR EXTERIOR APPLICATIONS INSULATION TYPE XHHW.
	2. WIRE #10 AWG AND SMALLER SHALL BE SOLID, WIRE # 8 AWG AND LARGER SHALL BE SINGLE CONDUCTOR STRANDED.
	3. WIRING SHALL BE CONSISTENTLY COLOR CODED THROUGHOUT. FOR 120/208 VOLT SYSTEMS: RED, BLUE, BLACK FOR LINE (PHASE) CONDUCTORS AND WHITE FOR NEUTRAL CONDUCTOR, SWITCH LEG SHALL BE SEPARATELY IDENTIFIED. FOR 277/480 VOLT SYSTEMS: BROWN, ORANGE, YELLOW FOR LINE (PHASE) CONDUCTORS AND GRAY FOR NEUTRAL CONDUCTOR, SWITCH LEG SHALL BE SEPARATELY IDENTIFIED.
	4. GROUND CONDUCTORS SHALL BE GREEN.
	5. NO COMMON NEUTRALS ARE ALLOWED.

WIRING DEVICES:	1. ALL WIRING DEVICES SHALL BE RATED 20AMP, SPECIFICATION GRADE, COLOR TO MATCH EXISTING. NYLON COVER PLATES.
SAFETY SWITCHES:	1. SAFETY SWITCHES SHALL BE OF SIZE NOTED ON THE DRAWING, OR AS REQUIRED; FUSIBLE OR NON-FUSIBLE AS INDICATED. ALL SWITCHES SHALL BE HEAVY DUTY TYPE AND SHALL HAVE QUICK-MAKE, QUICK-BREAK MECHANISM.
	2. ALL SWITCHES SHALL BE OF PROPER HORSEPOWER RATING AS APPLICABLE AND HAVE DUAL INTERLOCKS DESIGNED TO INTERLOCK THE SWITCH BOX DOOR WITH THE SWITCH OPERATING MECHANISM.
SURFACE RACEWAY:	1. STEEL SINGLE CHANNEL ONE PIECE FOR POWER CIRCUITS, DATA CABLES, OR FIRE ALARM. WIREMOLD V500 OR V700. IVORY OR WHITE AS DIRECTED.
	2. STEEL DUAL CHANNEL TWO PIECE FOR POWER CIRCUITS AND DATA INCLUDING DEVICES. WIREMOLD 4000. IVORY OR GRAY AS DIRECTED



NOTES:	1. THE ABOVE MOUNTING HEIGHTS SHALL APPLY TO ALL DEVICES UNLESS NOTED OTHERWISE ON THE PLANS. ALL NOTED DIMENSIONS ARE TO THE CENTERLINE OF THE DEVICE FROM THE FINISHED FLOOR UNLESS NOTED OTHERWISE.
	2. WHERE SPECIAL CONDITIONS PREVENT THE INSTALLATION OF DEVICES AT THE ABOVE HEIGHTS, THE EC SHALL VERIFY HEIGHTS ON SITE WITH THE ARCHITECT.
	3. THE EC SHALL VERIFY FINAL WORKBENCH, COUNTER, CABINET OR VANITY HEIGHTS INCLUDING BACK SPLASH, ON SITE WITH THE GC PRIOR TO THE INSTALLATION OF ANY BOXES.
	4. WHERE DEVICES ARE INSTALLED ABOVE OR BELOW EACH OTHER ALL DEVICE BOXES SHALL ALIGN VERTICALLY.
	5. WHERE DEVICES RE INSTALLED ON EACH SIDE OF A RATED WALL THE DEVICES SHALL BE OFFSET.

1. DEVICE MOUNTING DETAIL  
NTS



3. LIGHTING CONTROL PANEL DIAGRAM  
12" = 1'-0"

GENERAL NOTES:

1. REPAIR ALL SURFACES DISTURBED AS PART OF THIS WORK TO MATCH EXISTING CONDITIONS.
2. REFER TO ARCHITECTURAL PLANS AND SPECIFICATIONS TO DETERMINE THE AREAS TO BE DEMOLISHED AND THE EXTENT OF THIS DEMOLITION. COOPERATE FULLY WITH THE ARCHITECT.
3. REMOVE ALL BRANCH CIRCUIT CONDUCTORS AND CONDUIT, WHICH SERVE AREAS TO BE DEMOLISHED, BACK TO THE ELECTRICAL PANELBOARDS.
4. REMOVE BOXES, LIGHT FIXTURES, AND WIRING DEVICES IN AREAS TO BE DEMOLISHED.
5. EXTEND CONDUITS AND CONDUCTORS TO MAINTAIN ELECTRICAL CONTINUITY OF ELECTRICAL EQUIPMENT SERVING AREAS NOT DEMOLISHED AS REQUIRED. THIS APPLIES TO BOTH POWER AND COMMUNICATIONS CIRCUITS.
6. LOCATIONS BASED UPON AVAILABLE DOCUMENTATION AND CASUAL FIELD OBSERVATION. CONFIRM ALL LOCATIONS WITH FIELD OBSERVATIONS, MEASUREMENTS AND INVESTIGATION.
7. PROVIDE LIFTS, LADDERS AND OTHER EQUIPMENT REQUIRED TO GAIN ACCESS FOR ALL ELEVATED WORK. OWNER'S LIFTS AND LADDERS SHALL NOT BE USED.
8. PROVIDE ACCURATE, TYPED, PANEL DIRECTORY FOR ALL PANELS INSTALLED OR MODIFIED AS PART OF THE WORK.
9. PROVIDE CIRCUIT BREAKERS LISTED/LABELED FOR EXISTING PANELS TO SUPPLY BRANCH CIRCUITS.
10. FIRESTOP ALL PENETRATIONS THROUGH RATED WALLS AND FLOOR WITH A LISTED FIRESTOP METHOD MATCHING THE F AND T RATINGS OF THE PENETRATED MEDIUM.
11. SEAL ALL PENETRATIONS THROUGH EXTERIOR WALLS OR THROUGH WALLS OR ROOFS SUBJECT TO MOISTURE.
12. COORDINATE WITH OTHER TRADES LOCATIONS OF DISCONNECTS, MOTOR CONTROLLERS AND OTHER ELECTRICAL EQUIPMENT TO PROVIDE REQUIRED CLEARANCES.
13. PROVIDE BRANCH CIRCUIT TO TERMINALS OF MECHANICAL EQUIPMENT AND MAKE TERMINATIONS.
14. CONNECT EXIT SIGNS AND EMERGENCY LIGHTING UNITS (ELUS) AHEAD OF LOCAL SWITCHING TO THE SAME CIRCUIT AS THE AREA'S GENERAL LIGHTING.
15. PROVIDE MOUNTING HARDWARE AND MANUFACTURER'S ACCESSORIES FOR LIGHTING FIXTURES AS REQUIRED FOR A COMPLETE INSTALLATION.
16. THE EXISTING FIRE ALARM/SECURITY PANEL IS A HONEYWELL SYSTEM. OBTAIN THE SERVICES OF THE OWNER'S FIRE ALARM VENDOR FOR PROGRAMMING, ADDITIONS, AND/OR RELOCATIONS OF EXISTING SECURITY SYSTEM DEVICES.

INTERFERENCE NOTES:

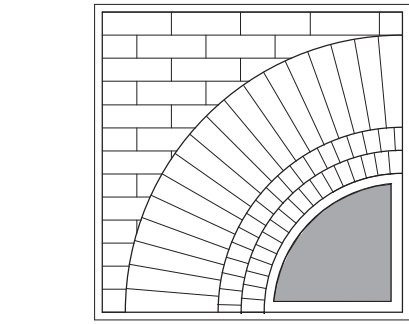
1. 1. INTERFERENCE IS DEFINED AS: A. THE INTERRUPTION OF NORMAL ELECTRICAL POWER DISTRIBUTION TO CONVENIENCE OUTLETS AND OTHER ELECTRICAL EQUIPMENT.
2. THIS IS A WORKING INSTITUTION AND CARE SHALL BE TAKEN NOT TO INTERFERE WITH NORMAL BUILDING OPERATIONS.
3. IF INTERFERENCE IS UNAVOIDABLE, NOTIFY THE OWNERS, IN WRITING, OF THE NATURE AND DURATION OF THE INTERFERENCE. THIS NOTIFICATION SHALL BE DELIVERED TO THE OWNER'S REPRESENTATIVE AT LEAST ONE WEEK PRIOR TO THE INTERFERENCE. OBTAIN WRITTEN PERMISSION FROM THE OWNER'S REPRESENTATIVE PRIOR TO PROCEEDING WITH THE INTERFERENCE. THE OWNER RESERVES THE RIGHT TO REQUEST THAT THE WORK BE ACCOMPLISHED AFTER NORMAL WORKING HOURS AT NO ADDITIONAL CHARGE IN ORDER TO AVOID THE INTERFERENCE.
4. ALL SUCH INTERFERENCES SHALL BE AMENDED AS RAPIDLY AS POSSIBLE, I.E., QUICKLY RESTORE THE BUILDING TO NORMAL OPERATING CONDITIONS.

EQUIPMENT NAME  
XXX VOLTS, X PH, X WIRE  
FED FROM PANEL XXX  
CIRCUIT XX, XX, XX

NOTES:

- EXAMPLE PLATE SHOWN.
- PROVIDE MINIMUM 1/4" HEIGHT WHITE LETTERING ON BLACK BACKGROUND.
- ATTACH WITH WATERPROOF ADHESIVE.

2. LAMINATED IDENTIFICATION PLATE  
NTS



**BUTLER  
ROWLAND  
MAYS**  
ARCHITECTS, LLP

57 West High Street  
Ballston Spa  
New York 12020

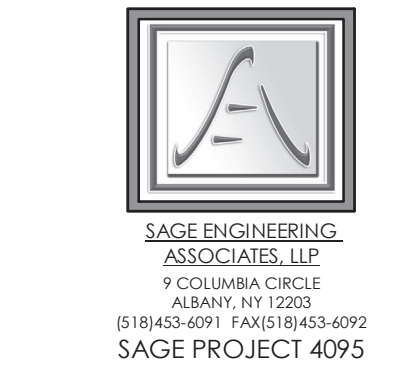
P: 518-885-1255  
F: 518-885-1266  
www.brmarchitects.com

**Additions &  
Renovations**

for the  
**Marlboro  
Free Library**

1251 Re 9W  
Marlboro, NY 12542

PROJECT



CONSULTANT



STAMP

CALLLED NORTH

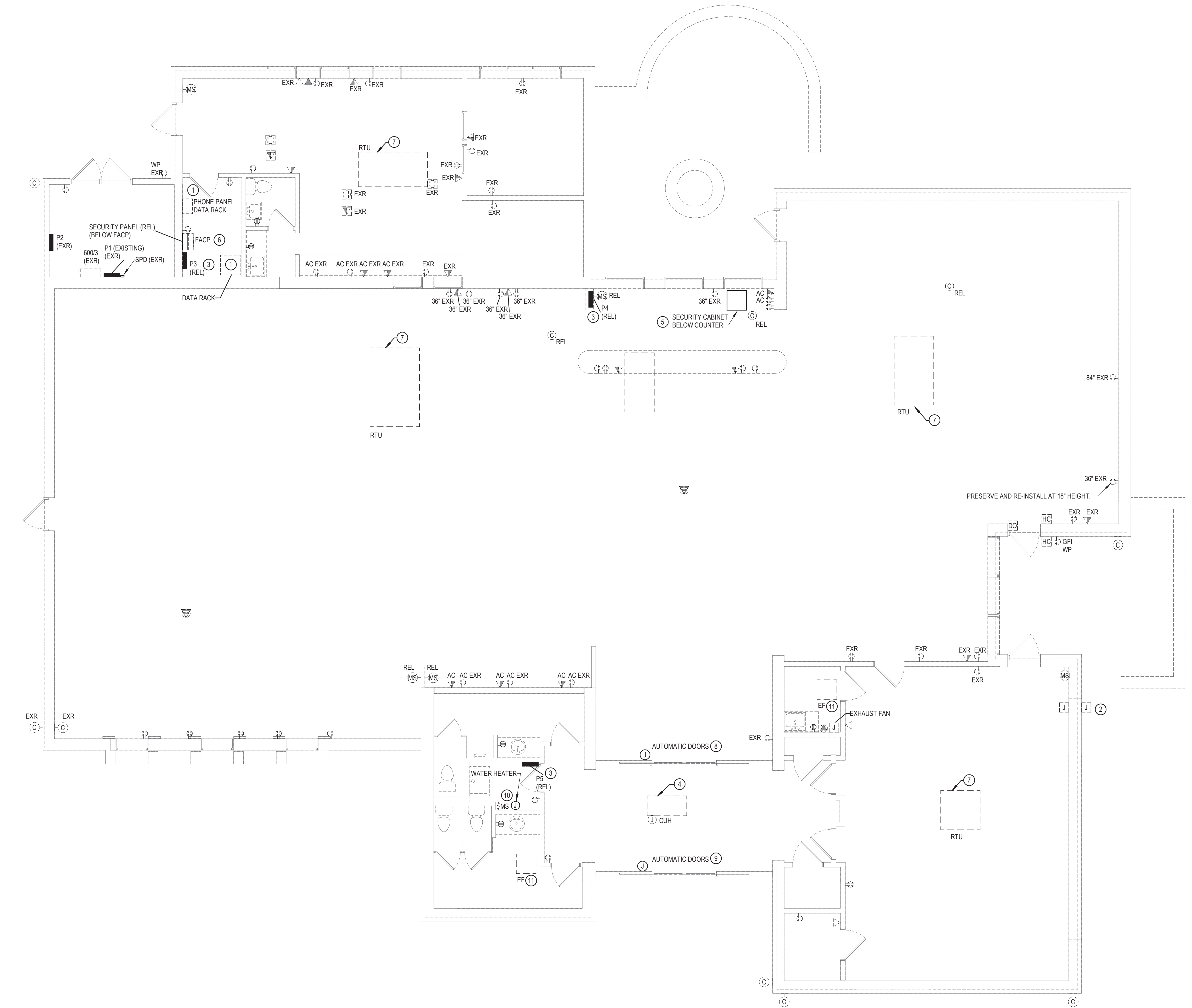
DWN. BY: RET  
SCALE: AS SHOWN  
JOB NO.: 23-46-06  
DATE: 05/20/25

**ELECTRICAL  
LEGEND,  
NOTES, AND  
DETAILS**

TITLE

**E001**  
DWG. NO.





1 POWER AND DATA REMOVALS PLAN  
3/16" = 1'-0"

GENERAL NOTES:

- SEE E001 FOR GENERAL NOTES.
- PHONE SYSTEM PANEL AND DATA RACK AND COMPONENTS WILL BE RELOCATED BY OWNER.

GENERAL REMOVAL NOTES:

- REMOVAL DRAWINGS INDICATE DEVICE LOCATIONS, EQUIPMENT CONNECTIONS, AND PANEL LOCATIONS AS OBSERVED IN THE FIELD. EXISTING PANEL INFORMATION IS BASED ON FIELD OBSERVATION AND AS BUILT DRAWINGS. VERIFY CIRCUITING IN FIELD PRIOR TO REMOVAL. CONFIRM ALL LOCATIONS WITH FIELD OBSERVATIONS, MEASUREMENTS, AND INVESTIGATION. REMOVE ELECTRICAL ITEMS SHOWN ON PLANS UNLESS NOTED OTHERWISE.
- PROVIDE LIFTS, LADDERS, AND OTHER EQUIPMENT REQUIRED TO GAIN ACCESS FOR ALL ELEVATED WORK. OWNER'S LIFTS AND LADDERS SHALL NOT BE USED.
- COORDINATE REMOVALS WITH THE ARCHITECTURAL PLANS.
- COORDINATE ELECTRICAL REMOVALS WITH OTHER TRADES.
- CONDUCT REMOVALS TO ALLOW EXISTING RECEPTACLES TO REMAIN TO STAY ON THEIR EXISTING CIRCUIT(S) SHOULD A NEW CIRCUIT OR DEDICATED CIRCUIT NOT BE INDICATED ON THE DRAWINGS.
- REMOVE CONDUCTORS AND CONDUIT BACK TO SOURCE PANEL WHERE NOT INDICATED FOR REUSE.
- MAINTAIN CIRCUIT CONTINUITY TO SYSTEMS AND ROOMS ADJACENT TO RENOVATION AND CONSTRUCTION AREAS. PERMANENTLY REPAIR CIRCUITS OR WIRING DISTURBED, MODIFIED, OR DISPLACED BY THE WORK.
- REPAIR ALL OPEN PENETRATIONS CREATED BY REMOVAL OF ELECTRICAL RACEWAYS.
- REMOVE CONDUIT AND CONDUCTORS ASSOCIATED WITH FIXTURES, DEVICES, AND EQUIPMENT REMOVED.
- PROVIDE COVER PLATES FOR ABANDONED FLUSH MOUNTED DEVICES.
- REMOVE DATA JACKS AND CABLING BACK TO DATA RACKS. REMOVE PHONE JACKS AND CABLING BACK TO TELEPHONE PUNCH PANEL.
- PROVIDE TEMPORARY LIGHTING TO 10 FC WHERE LIGHTING IS REMOVED OR TEMPORARILY DIMINISHED OR DISABLED.
- THE EXISTING FIRE ALARM IS A SILENT KNIGHT PANEL MAINTAINED BY SAFECO ALARM SYSTEMS. OBTAIN THE SERVICES OF THE OWNER'S FIRE ALARM VENDOR FOR PROGRAMMING, ADDITIONS, AND/OR RELOCATIONS OF EXISTING FIRE ALARM DEVICES.
- THE EXISTING SECURITY PANEL IS A REGENCY PANEL MAINTAINED BY SAFECO SECURITY SYSTEMS. OBTAIN THE SERVICES OF THE OWNER'S SECURITY VENDOR FOR PROGRAMMING, ADDITIONS, AND/OR RELOCATIONS OF EXISTING SECURITY SYSTEM DEVICES.
- PROTECT SMOKE DETECTORS DURING CONSTRUCTION. TAKE MEASURES TO PREVENT FIRE ALARM SYSTEM TRIP DUE TO CONSTRUCTION. RESTORE FIRE ALARM TO FULL FUNCTION WH

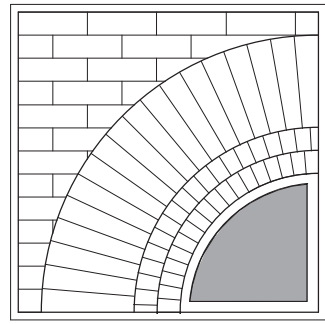
KEYED NOTES:

- PRESERVE AND RELOCATE PHONE PANEL, SECURITY PANEL, DATA RACK, AND ASSOCIATED COMPONENTS.
- REMOVE JUNCTION BOX. PRESERVE CONDUCTORS FOR REUSE.
- RELOCATE PANELBOARD AND EXISTING CIRCUITS TO REMAIN FROM HERE TO NEW LOCATION OF PANEL.
- REMOVE CABINET UNIT HEATER AND REMOVE CONDUCTOR BACK TO SOURCE.
- RELOCATE SECURITY SYSTEM AND EXTEND EXISTING WIRING TO NEW LOCATION. COORDINATE WITH OWNER'S VENDOR.
- PRESERVE AND RELOCATE RELOCATE PHONE PANEL, FACP, SECURITY PANEL, PANEL P3, DATA RACK, AND ASSOCIATED COMPONENTS.
- REMOVE EXISTING HVAC UNIT, DISCONNECTS, AND CIRCUIT BACK TO SOURCE.
- REMOVE AUTOMATIC DOOR AND REMOVE CONDUCTORS BACK TO SOURCE.
- ADD ALTERNATE #4: REMOVE AUTOMATIC DOOR AND REMOVE CONDUCTORS BACK TO SOURCE.
- REMOVE WATER HEATER AND MS SWITCH. REMOVE CONDUCTOR BACK TO SOURCE.
- REMOVE EXHAUST FAN. REMOVE CIRCUIT BACK TO SOURCE.

5/20/2025 ISSUED FOR BIDDING

ISSUES AND REVISIONS

© THIS DRAWING AND THE CONTENTS THEREOF ARE THE SOLE AND COPYRIGHTED PROPERTY OF BUTLER ROWLAND MAYS ARCHITECTS, LLP AND MAY NOT BE ALTERED, COPIED OR REPRODUCED BY ANY METHOD FOR ANY PURPOSE WITHOUT THE EXPRESS WRITTEN CONSENT OF BUTLER ROWLAND MAYS ARCHITECTS, LLP.



**BUTLER  
ROWLAND  
MAYS**  
ARCHITECTS, LLP

57 West High Street  
Ballston Spa  
New York 12020

P: 518•885•1255  
F: 518•885•1266  
www.brmarchitects.com

Additions &  
Renovations

for the  
**Marlboro  
Free Library**

1251 Rte 9W  
Marlboro, NY 12542

PROJECT



SAGE ENGINEERING  
ASSOCIATES, LLP  
9 COLUMBIA CIRCLE  
ALBANY, NY 12203  
(518)453-4091 FAX:(518)453-4092  
SAGE PROJECT 4095

CONSULTANT



STAMP

CALLED NORTH

DWN. BY: RET  
SCALE: AS SHOWN  
JOB NO.: 23-46-06  
DATE: 05/20/25

**POWER AND  
DATA  
REMOVALS  
PLAN**

TITLE

**ER101**

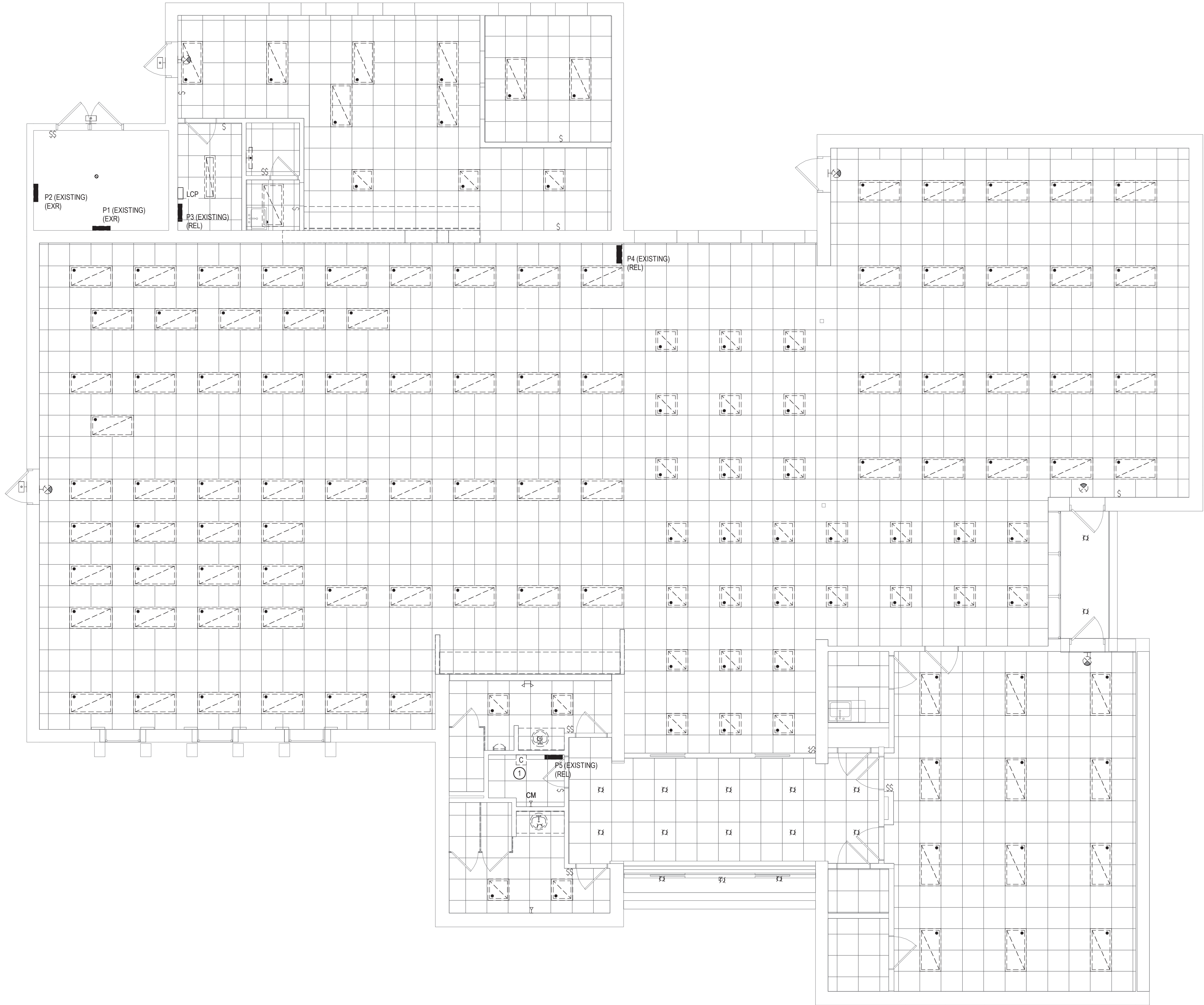
DWG. NO.

GENERAL NOTES:

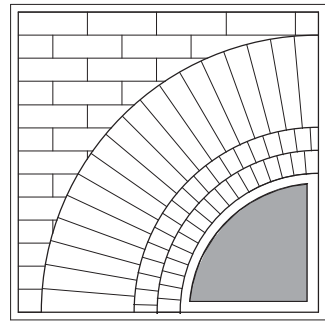
1. SEE E001 FOR GENERAL NOTES.
2. SEE ER101 FOR GENERAL REMOVAL NOTES.

KEYED NOTES:

- ① EXTEND EXISTING UG SITE LIGHTING CIRCUITS SERVED FROM THIS PANEL AND CONTACTOR TO NEW LOCATION OF PANELBOARD AND TIMECLOCK. REMOVE CONTACTOR.



① LIGHTING REMOVALS PLAN  
3/16" = 1'-0"



**BUTLER  
ROWLAND  
MAYS**  
ARCHITECTS, LLP

57 West High Street  
Ballston Spa  
New York 12020  
  
P: 518•885•1255  
F: 518•885•1266  
www.brmarchitects.com

Additions &  
Renovations

for the  
**Marlboro  
Free Library**

1251 Rte 9W  
Marlboro, NY 12542

PROJECT



CONSULTANT



STAMP

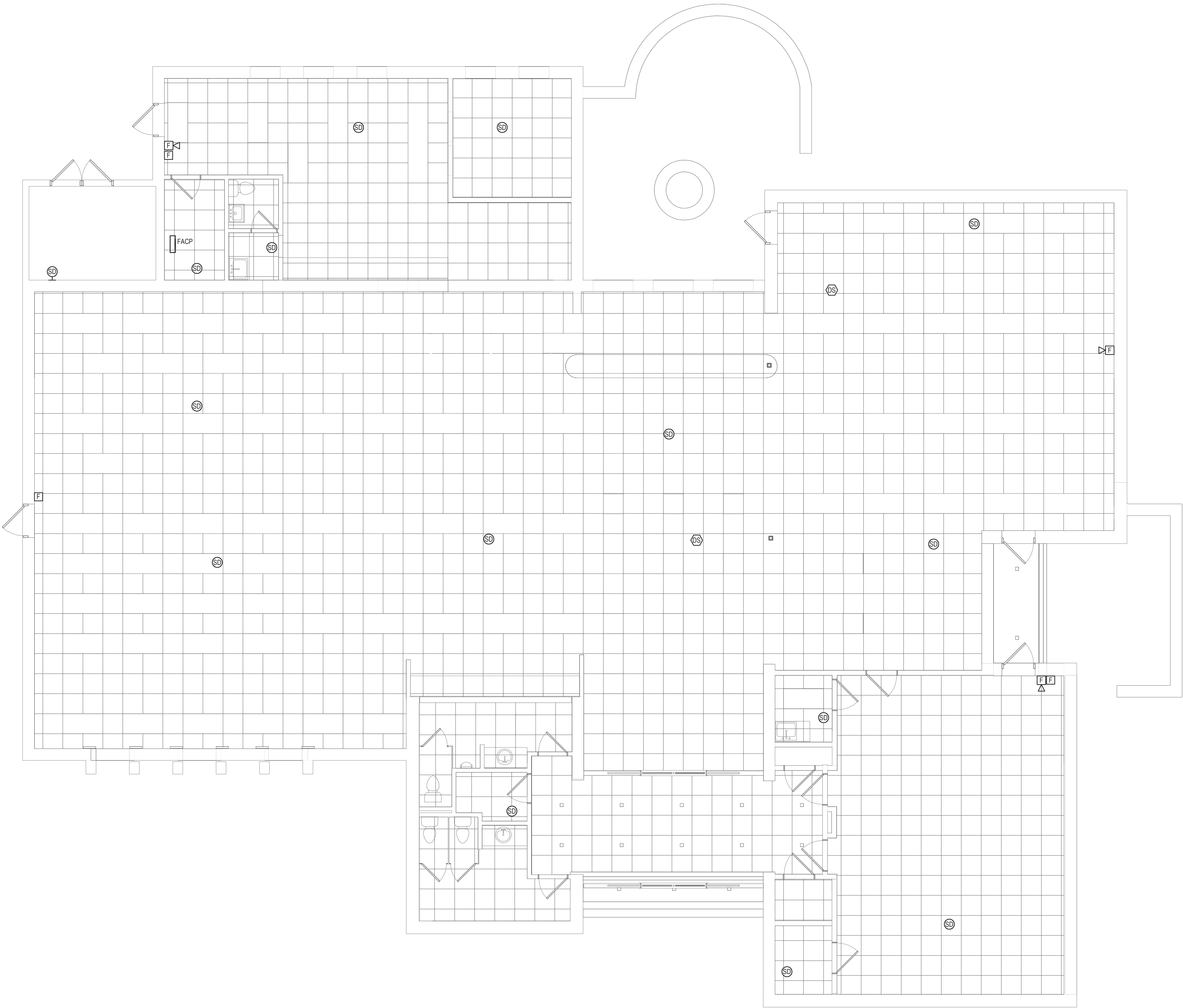
CALLED NORTH

DWN. BY: RET  
SCALE: AS SHOWN  
JOB NO.: 23-46-06  
DATE: 05/20/25

**LIGHTING  
REMOVALS  
PLAN**

TITLE

**ER201**  
DWG. NO.



① FIRE ALARM REMOVALS PLAN  
3/16" = 1'-0"

GENERAL NOTES:

- SEE E001 FOR GENERAL NOTES.
- SEE ER101 FOR GENERAL REMOVAL NOTES.

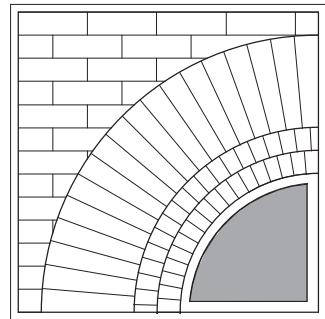
KEYED NOTES:



5/20/2025 ISSUED FOR BIDDING

ISSUES AND REVISIONS

© THIS DRAWING AND THE CONTENTS THEREOF ARE THE SOLE AND COPYRIGHTED PROPERTY OF BUTLER ROWLAND MAYS ARCHITECTS, LLP AND MAY NOT BE ALTERED, COPIED OR REPRODUCED BY ANY METHOD FOR ANY PURPOSE WITHOUT THE EXPRESS WRITTEN CONSENT OF BUTLER ROWLAND MAYS ARCHITECTS, LLP.



**BUTLER  
ROWLAND  
MAYS**  
ARCHITECTS, LLP

57 West High Street  
Ballston Spa  
New York 12020

P: 518•885•1255  
F: 518•885•1266  
www.brmarchitects.com

Additions &  
Renovations

for the  
**Marlboro  
Free Library**

1251 Rte 9W  
Marlboro, NY 12542

PROJECT



SAGE ENGINEERING  
ASSOCIATES, LLP  
9 COLUMBIA CIRCLE  
ALBANY, NY 12203  
(518)453-4091 FAX:(518)453-4092  
SAGE PROJECT 4095

CONSULTANT



STAMP

CALLED NORTH

DWN. BY: RET  
SCALE: AS SHOWN  
JOB NO.: 23-46-06  
DATE: 05/20/25

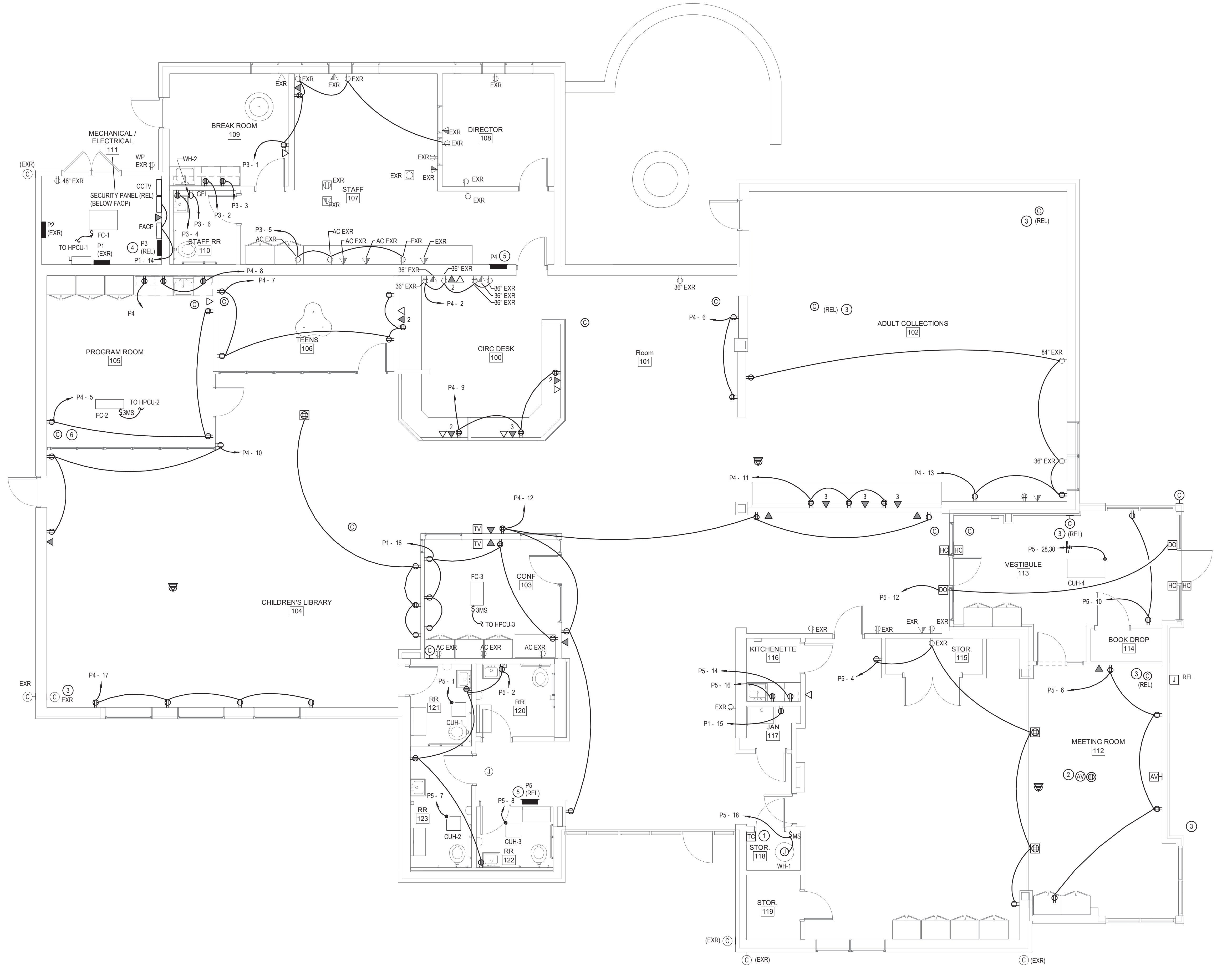
**FIRE ALARM  
REMOVALS  
PLAN**

TITLE

**ER301**

DWG. NO.

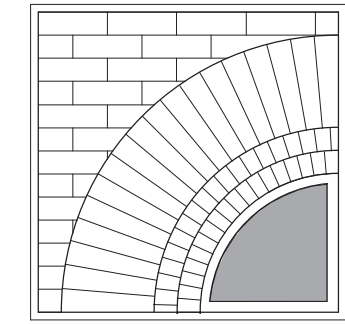




1 POWER AND DATA PLAN  
3/16" = 1'-0"

- GENERAL NOTES:
- SEE E001 FOR GENERAL NOTES.
  - ALL DUPLEX AND QUADRUPEX RECEPTACLES PROVIDED DURING THIS PHASE MUST BE TAMPER-RESISTANT.

- KEYED NOTES:
- PROVIDE INTERMATIC # ET2145C TIMECLOCK (4 CIRCUIT) TO CONTROL SITE AND BUILDING EXTERIOR LIGHTING.
  - PROVIDE ONE 25' ACTIVE HDMI CABLE FROM CEILING MOUNTED AV BOX TO WALL MOUNTED AV BOX. LEAVE 1' OF CABLE LENGTH AT CEILING MOUNTED AV BOX FOR CONNECTION TO PROJECTOR.
  - PRESERVE EXISTING CAMERA AND CABLE. REUSE IN PLACE AFTER CEILING AND WALL WORK IS COMPLETE.
  - PRESERVE AND RELOCATE RELOCATE PHONE PANEL, FACP, SECURITY PANEL, PANEL P3, DATA RACK, AND ASSOCIATED COMPONENTS.
  - PRESERVE AND RELOCATE PANEL.
  - PROVIDE INTERMATIC # ET2145C TIMECLOCK (4 CIRCUIT) TO CONTROL SITE AND BUILDING EXTERIOR LIGHTING.



**BUTLER  
ROWLAND  
MAYS**  
ARCHITECTS, LLP

57 West High Street  
Ballston Spa  
New York 12020  
P: 518-885-1255  
F: 518-885-1266  
www.brmarchitects.com

Additions &  
Renovations  
  
for the  
**Marlboro  
Free Library**

1251 Rte 9W  
Marlboro, NY 12542

PROJECT

SAGE ENGINEERING  
ASSOCIATES, LLP  
9 COLUMBIA CIRCLE  
ALBANY, NY 12203  
(518) 483-4091 FAX: (518) 483-4092  
SAGE PROJECT 4095

CONSULTANT

STAMP

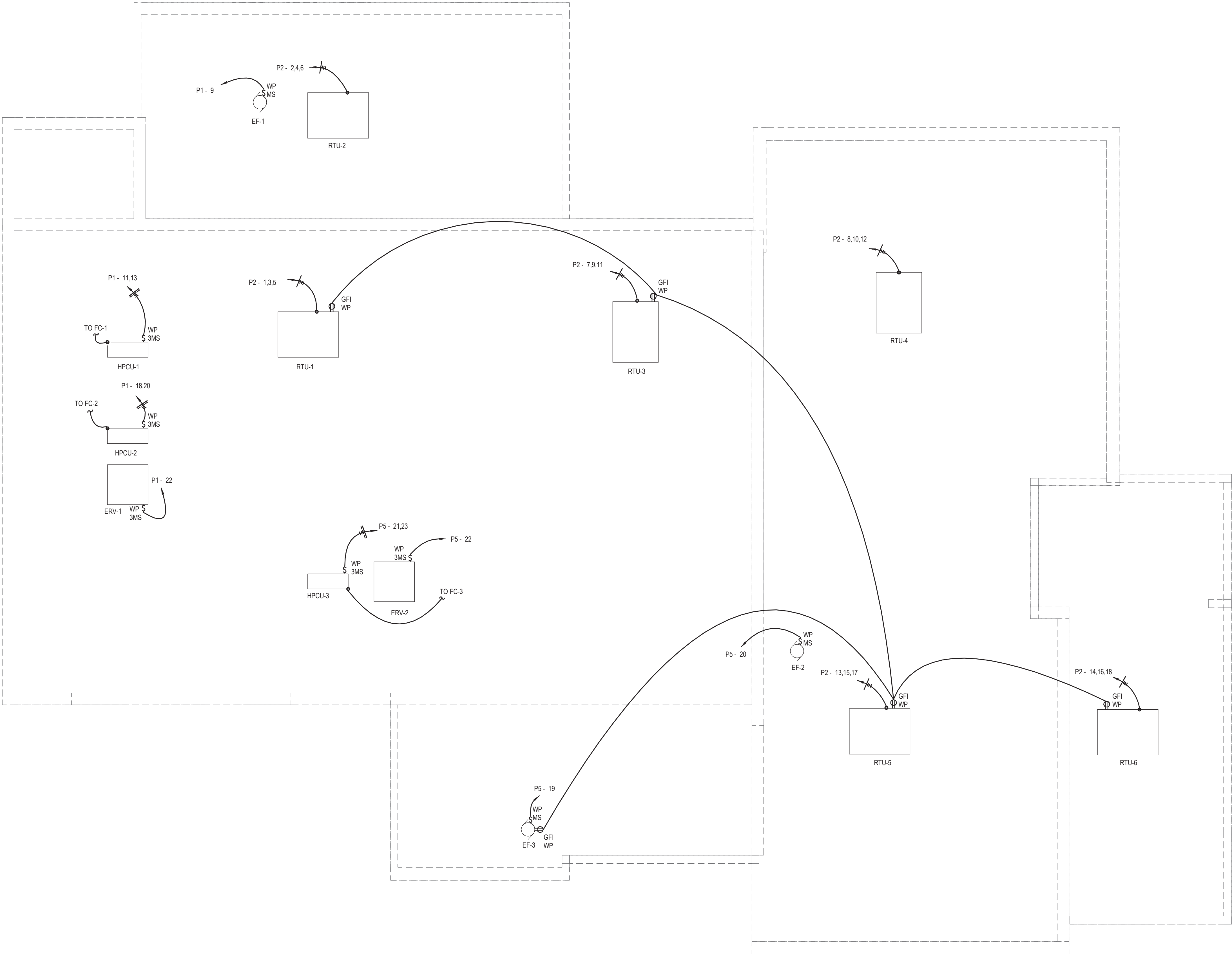
CALLED NORTH

DWN. BY: RET  
SCALE: AS SHOWN  
JOB NO.: 23-46-06  
DATE: 05/20/25

**POWER AND  
DATA PLAN**

TITLE

**E101**  
DWG. NO.

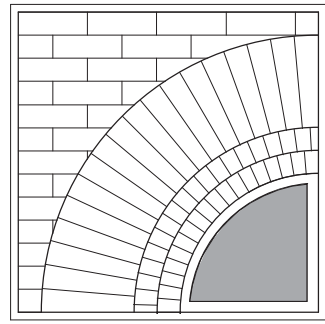


GENERAL NOTES:

1. SEE E001 FOR GENERAL NOTES.

KEYED NOTES:

○



**BUTLER  
ROWLAND  
MAYS**  
ARCHITECTS, LLP

57 West High Street  
Ballston Spa  
New York 12020

P: 518•885•1255  
F: 518•885•1266  
www.brmarchitects.com

Additions &  
Renovations

for the  
**Marlboro  
Free Library**

1251 Rte 9W  
Marlboro, NY 12542

PROJECT



SAGE ENGINEERING  
ASSOCIATES, LLP  
9 COLUMBIA CIRCLE  
ALBANY, NY 12203  
(518)453-4091 FAX (518)453-4092  
SAGE PROJECT 4095

CONSULTANT



STAMP

CALLED NORTH

DWN. BY: RET  
SCALE: AS SHOWN  
JOB NO.: 23-46-06  
DATE: 05/20/25

**MECHANICAL  
POWER PLAN**

TITLE

**E102**

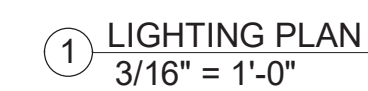
DWG. NO.



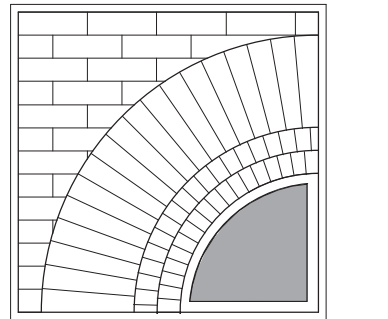
1. SEE E001 FOR GENERAL NOTES.

① PROVIDE LIGHTING CONTROL PANEL. LIGHTING CONTROL PANEL SHALL CONTAIN TIME-SWITCH CONTROLS. SET TIME-SWITCH CONTROLS FOR THE LIBRARY'S HOURS OF OPERATION (9:30AM-8PM MONDAY-FRIDAY, 11AM-5PM SATURDAY, 1-5PM SUNDAY). PROGRAM TIME-SWITCH CONTROLS TO SHUT OFF DURING OFF HOURS AND HOLIDAYS.

1. CONNECT LOW VOLTAGE SWITCH TO THE LCP VIA LIGHTING CONTROL CIRCUIT. LOW VOLTAGE SWITCH SHALL BE CAPABLE OF DIMMING (LIGHT REDUCTION BY NOT LESS THAN 50 PERCENT). LOW VOLTAGE SWITCH SHALL PERMIT THE CONTROLLED LIGHTING AREA TO REMAIN ON FOR NOT MORE THAN 2 HOURS.



THIS DRAWING AND THE CONTENTS  
HEREOF ARE THE SOLE AND  
COPYRIGHTED PROPERTY OF BUTLER  
ROWLAND MAYS ARCHITECTS, LLP AND  
MAY NOT BE ALTERED, COPIED OR  
REPRODUCED BY ANY METHOD FOR ANY  
PURPOSE WITHOUT THE EXPRESS  
WRITTEN CONSENT OF BUTLER ROWLAND  
MAYS ARCHITECTS, LLP.




57 West High Street  
Ballston Spa  
New York 12020

P: 518•885•1255  
F: 518•885•1266  
[www.brmarchitects.com](http://www.brmarchitects.com)

for the  
Marlboro  
Free Library

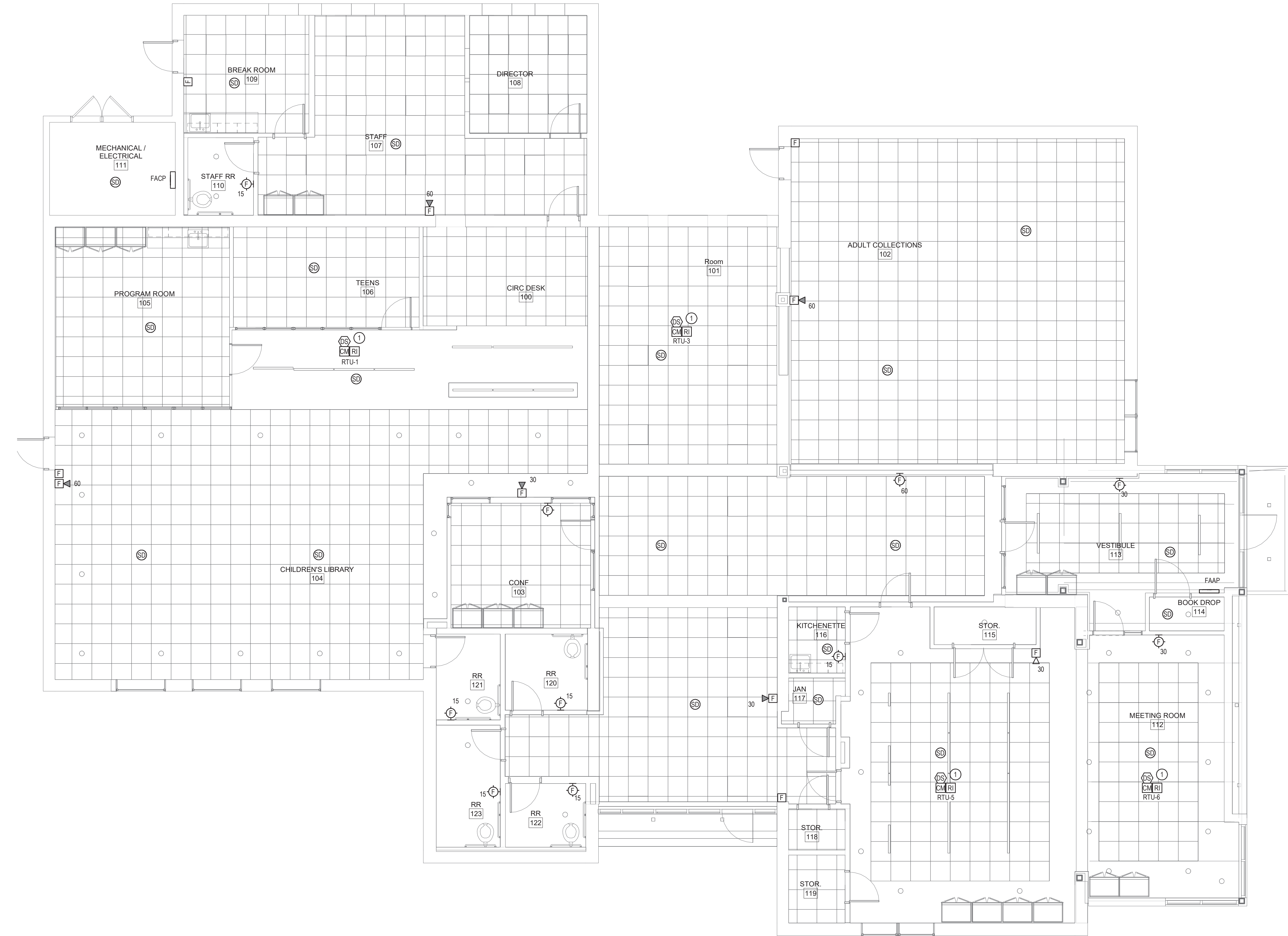
1251 Rte 9W  
Marlboro, NY 12542



**SAGE ENGINEERING  
ASSOCIATES, LLP**  
9 COLUMBIA CIRCLE  
ALBANY, NY 12203  
(518)453-6091 FAX:(518)453-6092  
**SAGE PROJECT 4095**

OWN. BY: RET  
SCALE: AS SHOWN  
JOB NO.: 23-46-06  
DATE: 05/20/25

**E201**  
NO.



1 FIRE ALARM PLAN  
3/16" = 1'-0"

GENERAL NOTES:

1. SEE E001 FOR GENERAL NOTES.

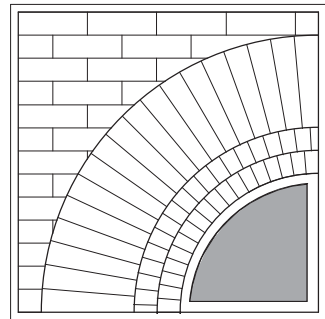
KEYED NOTES:

- 1 PROVIDE DUCT SMOKE DETECTOR IN THE RETURN DUCT OF INDICATED UNIT. LOCATE DUCT SMOKE DETECTOR UPSTREAM OF ALL BRANCHES. PROVIDE CONTROL RELAYS AS NECESSARY TO SHUT DOWN ROOFTOP UNIT THAT DUCTWORK RETURNS TO. PROVIDE WIRING, INCLUDING ANY CONTROL WIRING, PER MANUFACTURERS INSTRUCTIONS.

5/20/2025 ISSUED FOR BIDDING

ISSUES AND REVISIONS

© THIS DRAWING AND THE CONTENTS THEREOF ARE THE SOLE AND COPYRIGHTED PROPERTY OF BUTLER ROWLAND MAYS ARCHITECTS, LLP AND MAY NOT BE ALTERED, COPIED OR REPRODUCED BY ANY METHOD FOR ANY PURPOSE WITHOUT THE EXPRESS WRITTEN CONSENT OF BUTLER ROWLAND MAYS ARCHITECTS, LLP.



**BUTLER  
ROWLAND  
MAYS**  
ARCHITECTS, LLP

57 West High Street  
Ballston Spa  
New York 12020

P: 518•885•1255  
F: 518•885•1266  
www.brmarchitects.com

Additions &  
Renovations

for the  
**Marlboro  
Free Library**

1251 Rte 9W  
Marlboro, NY 12542

PROJECT



SAGE ENGINEERING  
ASSOCIATES, LLP  
9 COLUMBIA CIRCLE  
ALBANY, NY 12203  
(518) 483-4091 FAX (518) 483-4092  
SAGE PROJECT 4095

CONSULTANT



STAMP

CALLLED NORTH

DWN. BY: RET  
SCALE: AS SHOWN  
JOB NO.: 23-46-06  
DATE: 05/20/25

**FIRE ALARM  
PLAN**

TITLE

**E301**

DWG. NO.



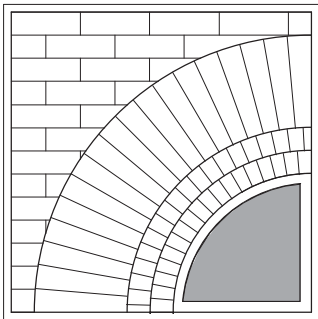
LIGHTING FIXTURE SCHEDULE									
NOTE:									
TYPE	DESCRIPTION	MANUFACTURER	LAMP				VOLTS	FIXTURE REMARKS	
			TYPE	WATTS	LUMENS	COLOR			
DL1	4" ROUND RECESSED LED DOWNLIGHT	LUMENWERX	LED	14.0 W	767 lm	3500 K	120/277		
L1/16	LINEAR SUSPENDED BI-DIRECTIONAL LED	Tetra2 Direct Lambertian 2ft 80CRI 4000K Medium	LED	88.0 W	2600 lm	3500 K	120/277		
L1/28	LINEAR SUSPENDED BI-DIRECTIONAL LED	Tetra2 Indirect Lambertian 2ft 80CRI 4000K Medium	LED	154.0 W	2600 lm	3500 K	120/277		
L1/36	LINEAR SUSPENDED BI-DIRECTIONAL LED	Tetra2 Direct Lambertian 2ft 80CRI 4000K Medium	LED	198.0 W	2600 lm	3500 K	120/277		
L2/6	LINEAR SUSPENDED ACCOUSTIC LED	Lumenwerx VIA1.5PD-HLO-FH-SW-80-500-35-4FT	LED	30.6 W	2600 lm	3500 K	120/277		
L3/4	LINEAR SUSPENDED ACCOUSTIC LED	LUMENWERX VIA1.5PD-HLO-FH-SW-80-500-35-4FT	LED	28.0 W	2600 lm	3500 K	120/277		
L3/16	LINEAR RECESSED LED	LUMENWERX VIA1.5PD-HLO-FH-SW-80-500-35-4FT	LED	112.0 W	2600 lm	3500 K	120/277		
L4/12	LINEAR SUSPENDED LED	LUMENWERX QUAWP-HLO-LED-80-750-35-4FT	LED	21.1 W	2600 lm	3500 K	120/277		
P1	ACCOUSTIC RING 6"	LumenWerx PCROD-48-ULO-LED-80-7000-35-UNV	LED	116.0 W	0 lm	3500 K	120/277	SUSPEND WITH 8" FROM BOTTOM OF FIXTURE TO FLOOR.	
P2	ACCOUSTIC RING 8"	LightArt Accoustic Ring 8"	LED	173.0 W	0 lm	3500 K	120/277	SUSPEND WITH 8" FROM BOTTOM OF FIXTURE TO FLOOR.	
P3	ACCOUSTIC RING 10"	LightArt Accoustic Ring 10"	LED	231.0 W	0 lm	3500 K	120/277	SUSPEND WITH 8" FROM BOTTOM OF FIXTURE TO FLOOR.	
P5	ACCOUSTIC RING 16"	LightArt Accoustic Ring 16"	LED	375.0 W	0 lm	3500 K	120/277	SUSPEND WITH 8" FROM BOTTOM OF FIXTURE TO FLOOR.	
S/48	CONTRACTOR LED SINGLE STRIP, 48", 3000 LUMENS, 120-347V, 3500K, 80 CRI	CSS L48 ALO3 (3000) UVOLT SWW3 (35) 80CRI	LED	27.0 W	2600 lm	3500 K	120/277		
SM1	ROUND SUSPENDED 48" LED	LumenWerx PCROD-48-ULO-LED-80-7000-35-UNV	LED	64.6 W	0 lm	3500 K	120/277		
SM2	ROUND SUSPENDED 16"	BROWNLEE LIGHTING INC 2470-16-WH-R22-35K	LED	0.0 W	0 lm	3500 K	120/277		
SM3	ROUND SUSPENDED 24"	BROWNLEE LIGHTING INC 2472-24-WH-R49-35K	LED	2196.0 W	0 lm	3500 K	120/277		
SM4	9" BLACK PENDANT	LightArt ACC-SHPE-BOX-48SQ-12H	E12	60.0 W	1200 lm	3000 K	120/277		
TL	2X2 ALO3 SWW7 MVOLT 3500K MEDIUM LUMEN	LITHONIA LIGHTING LFRM 2X2ALO3 SWW7 MVOLT M6	LED	24.0 W	3130 lm	3500 K	120/277		
	LED EMERGENCY LIGHTING UNIT WITH ADJUSTABLE HEADS, SELF DIAGNOSTICS	LITHONIA #ELMZLEDSD	LED	2.9 W			120		
X2	UNIVERSAL MOUNT SINGLE OR DOUBLE FACE THERMOPLASTIC LED EXIT SIGN WITH EMERGENCY LIGHTING UNIT, SELF DIAGNOSTICS		LED	3.4 W	-		120	PROVIDE MOUNTING AND DIRECTIONAL CONFIGURATION AS INDICATED ON DRAWINGS	

LIGHTING CONTROL PANEL SCHEDULE							
NOTE:							
NAME AND LOCATION					MOUNTING SURFACE	CIRCUIT	VOLTAGE
LCP MECHANICAL/ELECTRICAL 111						P1-17	120 V
RELAY	DESCRIPTION	RELAY TYPE	CIRCUIT	VOLTAGE	INPUTS	MANUAL CONTROLS	
1	CHILDREN'S LIBRARY 104		P1-19	120 V			
2	ROOM 101		P1-23	120 V			
3	ADULT COLLECTIONS 102		P1-28	120 V			
4	VESTIBULE 113		P1-26	120 V			
5	PROGRAM ROOM 105, TEENS 106, CIRC DESK 100		P1-24	120 V			

GENERAL NOTES:

1. SEE E001 FOR GENERAL NOTES.

KEYED NOTES:



**BUTLER  
ROWLAND  
MAYS**  
ARCHITECTS, LLP

57 West High Street  
Ballston Spa  
New York 12020

P: 518•885•1255  
F: 518•885•1266  
www.brmachitects.com

**Additions &  
Renovations**

for the  
**Marlboro  
Free Library**

1251 Rte 9W  
Marlboro, NY 12542

PROJECT



SAGE ENGINEERING  
ASSOCIATES, LLP  
9 COLUMBIA CIRCLE  
ALBANY, NY 12203  
(518)453-4091 FAX:(518)453-4092  
SAGE PROJECT 4095

CONSULTANT



STAMP

CALLED NORTH

DWN. BY: RET  
SCALE: AS SHOWN  
JOB NO.: 23-46-06  
DATE: 05/20/25

**LIGHTING  
FIXTURE  
SCHEDULE**

TITLE

**E501**

DWG. NO.

GENERAL NOTES:

1. SEE E001 FOR GENERAL NOTES.

KEYED NOTES:



NAME: P1 (EXISTING)

MOUNTING: SURFACE

VOLTS: 208Y/120

PHASE: 3

WIRE: 4

MAIN RATING: 200 A

MCB:

MIN A/C RATING:

AMPS RMS SYM

OTHER:

LOCATION: MECHANICAL / ELECTRICAL 111

NOTES:

CKT	DESCRIPTION	LOAD	WIRE	BKR	P	A	B	C	A	B	C	P	BKR	WIRE	LOAD	DESCRIPTION	CKT
1	PANEL "C"	--	--	100	3	0			0			1	20	--	--	FUEL LINE HECT TAPE	2
3	--	--	--	--	--	0			--	1	--	--	--	--	--	--	4
5	--	--	--	--	--		0					--	1	--	--	--	6
7	EXIT LIGHTS	--	--	20	1	0			0			2	125	--	--	HEAT PUMP #1 BACK OFFICE	8
9	VACUUM	--	--	20	1							--	1	--	--	--	10
11	SPARE	--	--	20	1		0			0		0	2	125	--	HEAT PUMP #3 COMMUNITY ROOM	12
13	VACUUM	--	--	20	1	0			0			--	--	--	--	--	14
15	HEAT PUMP #2 KIDS AREA	--	--	125	2		0			0		2	60	--	--	COMPUTER POWER PANEL	16
17	--	--	--	--	--			0				0	--	--	--	--	18
19	SIEMENS SURGE PROTECTIVE DEVICE	--	--	40	3	0			0			3	100	--	--	3 PHASE ACHEAT UNIT - CLOSEST TO 9W	20
21	--	--	--	--	--			0			0	--	--	--	--	--	22
23	--	--	--	--	--				0			0	1	--	--	--	24
25	--	--	--	--	1	--			--			1	--	--	--	--	26
27	--	--	--	--	1	--			--	--	--	1	--	--	--	--	28
29	--	--	--	--	1	--		--			--	1	--	--	--	--	30
31	--	--	--	--	1	--		--	--		--	1	--	--	--	--	32
33	--	--	--	--	1	--		--	--	--	--	1	--	--	--	--	34
35	--	--	--	--	1	--			--	--	--	1	--	--	--	--	36
37	--	--	--	--	1	--		--	--	--	--	1	--	--	--	--	38
39	TEMP COMPRESSOR	--	--	20	2		0		--			1	--	--	--	--	40
41	--	--	--	--	--			0				--	1	--	--	--	42

NAME: P2 (EXISTING)

MOUNTING: SURFACE

VOLTS: 208Y/120

MAIN RATING: 200 A

MCB: 300 A

OTHER:

EXISTING PANEL SCHEDULE

PHASE: 3

WIRE: 4

MIN A/C RATING:

AMPS RMS SYM

LOCATION: MECHANICAL / ELECTRICAL 111

NOTES:

CKT	DESCRIPTION	LOAD	WIRE	BKR	P	A	B	C	A	B	C	P	BKR	WIRE	LOAD	DESCRIPTION	CKT
1	ROOF AIR CONDITIONING UNIT	--	--	70	3	0			0			3	50	--	--	ROOF AIR CONDITIONING UNIT	2
3	--	--	--			0			0			--	--	--	--	--	4
5	--	--	--					0				0	--	--	--	--	6
7	FURNACE (MOVE TO P1)	--	--	20	1	0			0			1	20	--	--	LIGHTS (MOVE TO P1)	8
9																	10
11																	12
13																	14
15																	16
17																	18

NAME: P3 (EXISTING)

MOUNTING: SURFACE

VOLTS: 208Y/120

MAIN RATING: 125 A

MCB: MLO

OTHER:

NOTES:

RELOCATE EXISTING PANEL

PHASE: 3

WIRE: 4

MIN A/C RATING:

AMPS RMS SYM

LOCATION: STAFF RR 110

CKT	DESCRIPTION	LOAD	WIRE	BKR	P	A	B	C	A	B	C	P	BKR	WIRE	LOAD	DESCRIPTION	CKT
1	OUTLETS #1	--	--	20	1	0			0			1	20	--	--	OUTLETS #2	2
3	OUTLETS #3	--	--	20	1		0			0		1	20	--	--	OUTLETS #4	4
5	OUTLETS #5	--	--	20	1						0	1	20	--	--	OUTLETS #6	6
7	OUTLETS #7	--	--	20	1	0			0			1	20	--	--	OUTLETS #8	8
9	-	--	--	--	1					--		1	--	--	--	-	10
11	-	--	--	--	1					--	1	--	--	--	--	-	12
13	-	--	--	--	1	--	--		--			1	--	--	--	-	14
15	-	--	--	--	1							1	--	--	--	-	16
17	-	--	--	--	1							1	--	--	--	-	18
19	-	--	--	--	1	--			--			1	--	--	--	-	20



