

2 Truss ID Sign Detail  
Scale: 6" = 1'-0"

Life Safety Notes	
1.	A KEYED KNOX BOX WILL BE PROVIDED PER REQUIREMENTS OF THE LOCAL BUILDING AND FIRE DEPARTMENTS. THE KEYED BOX SHALL CONFORM WITH REQUIREMENTS OF THE INTERNATIONAL FIRE CODED SECTION 906 AND SHALL BE TIED INTO THE EXISTING FIRE ALARM SYSTEM. THE LOCATION OF THE KEY BOX SHALL BE DETERMINED BY THE FIRE INSPECTOR.
2.	REFER TO ELECTRICAL DWGS FOR ALARM SYSTEM.

Life Safety Plan Legend	
SYMBOL	DESCRIPTION
	6 LITER CLASS K WET CHEMICAL FIRE EXTINGUISHER W/ A MINIMUM RATING OF 1-A-K, WALL MOUNTED
	CLASS A 10LB. EXTINGUISHER WALL MOUNTED (SURFACE)
	ILLUMINATED EXIT SIGN/ EMERGENCY LIGHT COMBINATION FIXTURE - W/ 90 MINUTE MINIMUM BATTERY BACKUP, ENSURE MINIMUM 1 FC ILLUMINATION ALONG ENTIRE EGRESS PATH
	WALL MOUNTED EMERGENCY LIGHT FIXTURE W/ 90 MINUTE MINIMUM BATTERY BACKUP

OCCUPANCY	MAX TRAVEL DISTANCE ALLOWED		MAX TRAVEL DISTANCE PROVIDED
	W/ SFRINKLER	W/O SFRINKLER	
F-1	250'	200'	86'
S-2	400'	300'	141'

NOTE: INFORMATION PRESENTED IN THIS TABLE HAS BEEN PREPARED TO DEPICT COMPLIANCE WITH BCNY'S TABLE 1007.2

Stories with One Exit		
OCCUPANCY	MAX COMMON PATH OF EGRESS TRAVEL DISTANCE	MAX TRAVEL DISTANCE PROVIDED
S-2	75'	50'

NOTE: INFORMATION PRESENTED IN THIS TABLE HAS BEEN PREPARED TO DEPICT COMPLIANCE WITH BCNY'S TABLE 1006.3.3(2)

**JTA**  
JOSEPH THOMPSON  
ARCHITECT

Joseph G. Thompson Architect, PLLC  
108 N Division Street, Ste 100  
Peekskill, New York 10566

PH: (845) 532-8156  
EM: joe@jthompsonarch.com

NOTES:

IT IS A VIOLATION OF THE LAW FOR ANY PERSON, UNLESS ACTING UNDER THE DIRECTION OF A LICENSED ARCHITECT OR ENGINEER, TO ALTER AN ITEM IN ANY WAY. IF AN ITEM BEARING THE SEAL OF AN ARCHITECT OR ENGINEER IS ALTERED, THE ALTERING ARCHITECT OR ENGINEER SHALL AFFIX TO HIS ITEM THE SEAL AND THE NOTATION ALTERED BY FOLLOWED BY HIS SIGNATURE AND THE DATE OF SUCH ALTERATION, AND A SPECIFIC DESCRIPTION OF THE ALTERATION.

DO NOT SCALE DRAWINGS. WRITTEN DIMENSIONS GOVERN.

© JOSEPH G THOMPSON ARCHITECT, PLLC. ALL RIGHTS RESERVED.



SEAL  
Joseph G. Thompson, RA  
New York State License #036057

PEEKSKILL FIREHOUSE KITCHEN INCUBATOR

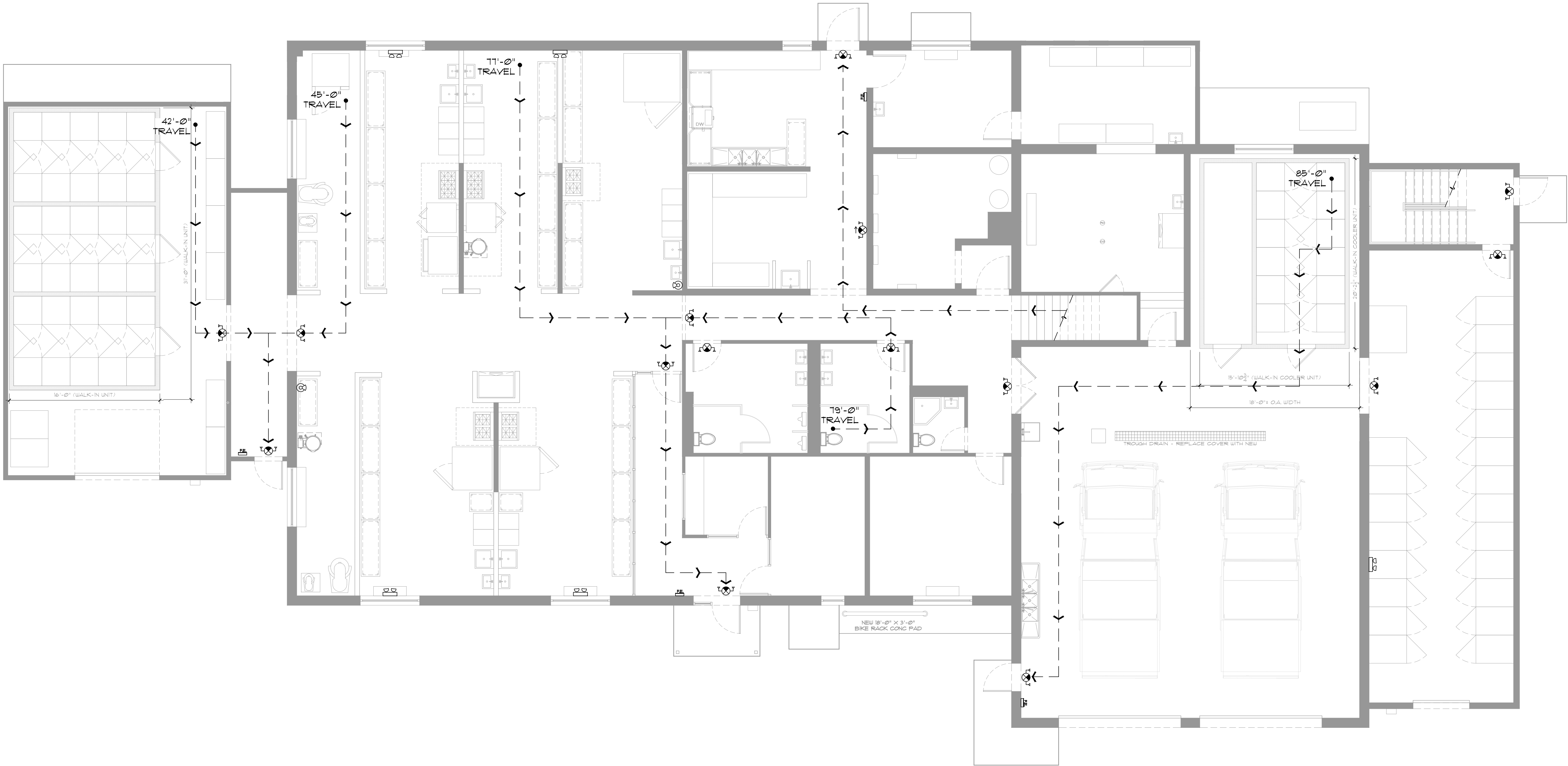
Peekskill Facilities Development Corporation (Owner)  
EDA PROJECT #01-01-15338  
701 Washington Street, Peekskill, New York 10566  
S-B-L: 32-20-9-1  
City of Peekskill - Westchester County

FOR CONTRACTOR BID

Date: May 7, 2025

Revisions:

LS1.01



1 New First Floor Egress Plan  
Scale: 3/16" = 1'-0"