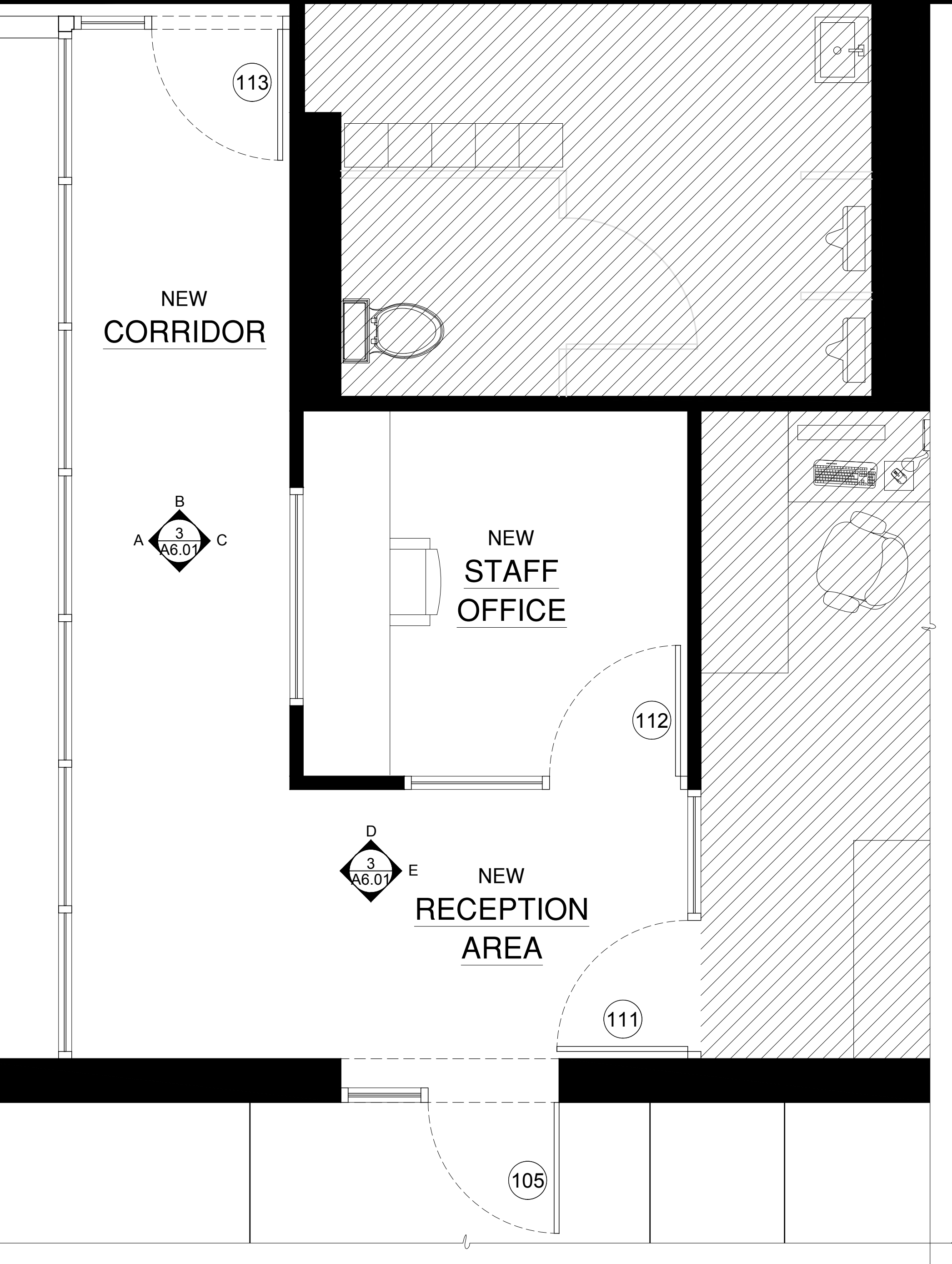


Window Schedule - First Floor

Window Number	Type	Manufacturer	Series	Window Type	Catalog No.	Lite Pattern	Opening Control Device: Y/N	Remarks
101	CASEMENT	ANDERSEN	REPLACEMENT WINDOW VINYL	A	EXIST OPENING REPLACEMENT WINDOW	-	NO	
102	CASEMENT	ANDERSEN	REPLACEMENT WINDOW VINYL	B	EXIST OPENING REPLACEMENT WINDOW	-	NO	
103	CASEMENT	ANDERSEN	REPLACEMENT WINDOW VINYL	A	EXIST OPENING REPLACEMENT WINDOW	-	NO	
104	CASEMENT	ANDERSEN	REPLACEMENT WINDOW VINYL	A	EXIST OPENING REPLACEMENT WINDOW	-	NO	
105	CASEMENT	ANDERSEN	REPLACEMENT WINDOW VINYL	A	EXIST OPENING REPLACEMENT WINDOW	-	NO	
106	CASEMENT	ANDERSEN	REPLACEMENT WINDOW VINYL	A	EXIST OPENING REPLACEMENT WINDOW	-	NO	
107	CASEMENT	ANDERSEN	REPLACEMENT WINDOW VINYL	A	EXIST OPENING REPLACEMENT WINDOW	-	NO	
108	CASEMENT	ANDERSEN	REPLACEMENT WINDOW VINYL	B	EXIST OPENING REPLACEMENT WINDOW	-	NO	
109	CASEMENT	ANDERSEN	REPLACEMENT WINDOW VINYL	A	EXIST OPENING REPLACEMENT WINDOW	-	NO	

Window Schedule - First Floor

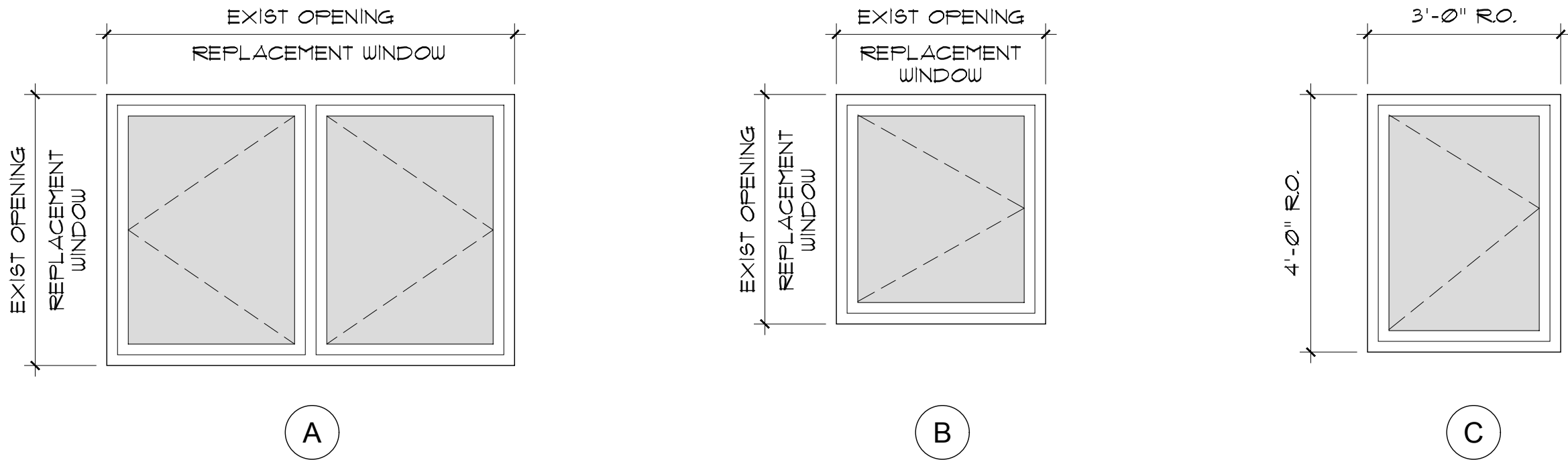
Window Number	Type	Manufacturer	Series	Window Type	Catalog No.	Lite Pattern	Opening Control Device: Y/N	Remarks
201	CASEMENT	ANDERSEN	REPLACEMENT WINDOW VINYL	A	EXIST OPENING REPLACEMENT WINDOW	-	YES	
202	CASEMENT	ANDERSEN	100 SERIES	C	3040	-	YES	EGRESS WINDOW



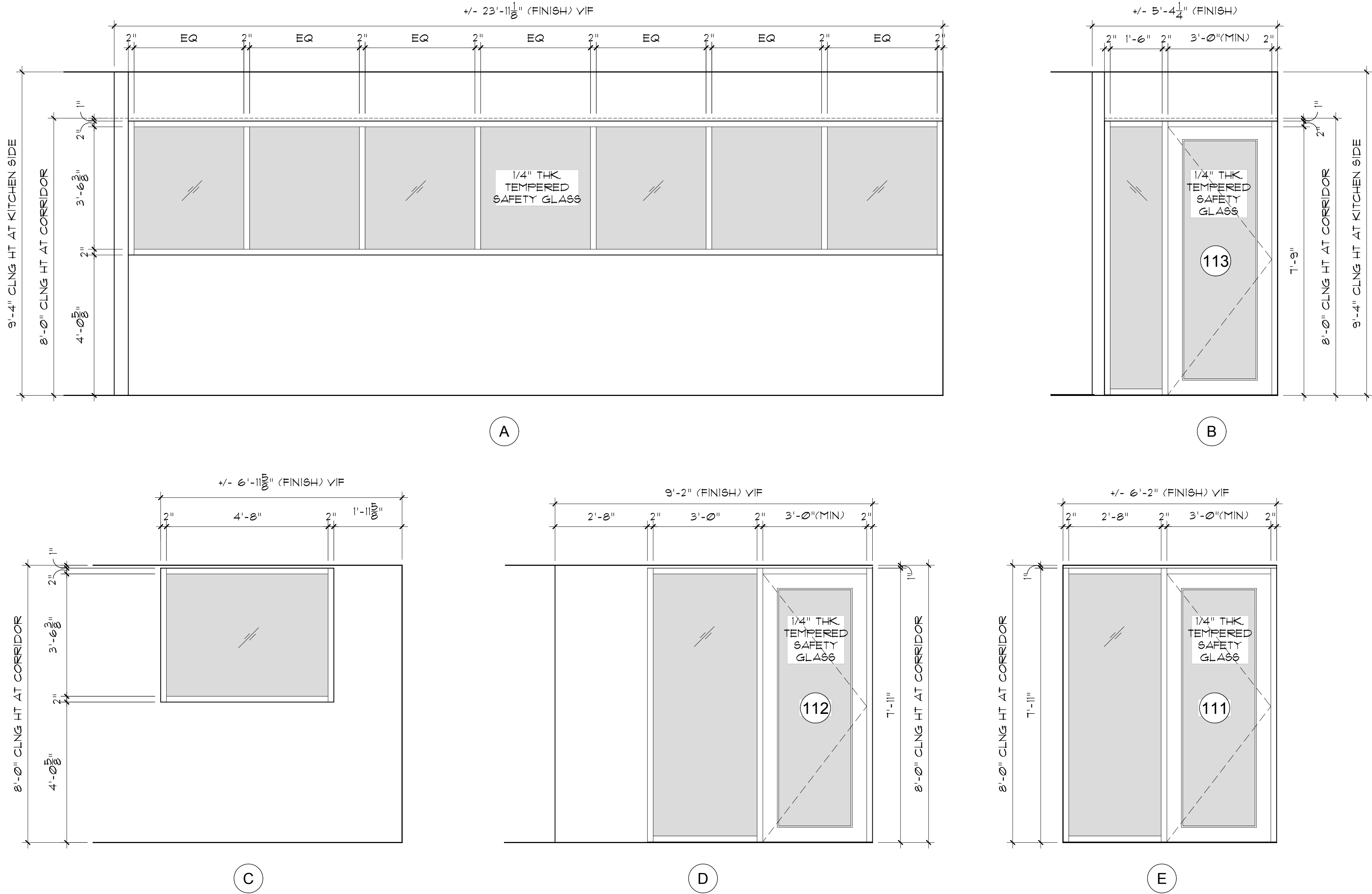
2 Interior Glazing Framing System Enlarged Floor Plan
A6.01 Scale: 1/2" = 1'-0"

WINDOW NOTES:

1. WINDOWS SHALL BE VINYL CONSTRUCTION REPLACEMENT WINDOW SERIES AS MANUFACTURED BY ANDERSEN WINDOWS AND DOORS OR EQUAL. WHITE EXTERIOR FINISH TO BE VERIFIED BY OWNER/ARCHITECT.
2. ALL REPLACEMENT WINDOWS SIZES TO BE FIELD VERIFIED.
3. TYPICAL WINDOW FUNCTION SHALL BE CASEMENT.
4. NO WINDOW LITE PATTERN, REFER TO ELEVATIONS.
5. NO CASING, EXIST BRICK SILL TO REMAIN.
6. ALL GLAZING WITHIN 18" AFF SHALL BE TEMPERED SAFETY GLAZING.
7. GC SHALL FIELD VERIFY CONDITIONS AND PREPARE SHOP DRAWINGS FOR ARCHITECT REVIEW & APPROVAL PRIOR TO FABRICATION.
8. ALL SAFETY GLAZING SHALL BE COMPLIANT WITH CPSC 16 CFR OR ANSI Z97.1. FINAL APPROVAL OF ALL LOCATIONS REQUIRED SUBJECT TO THE CODE OFFICIAL.



1 Typical Window Type Details
A6.01 Scale: 1/2" = 1'-0"



3 Interior Glazing Framing System Elevations
A6.01 Scale: 1/2" = 1'-0"

INTERIOR GLAZING FRAMING SYSTEM NOTES:

1. INTERIOR GLAZING FRAMING SYSTEM SHALL BE MANUFACTURED BY KAWNEER OR EQUAL, NON-THERMAL PERFORMANCE, FINISH CLEAR ANODIZED.
2. ALL GLAZING SHALL BE 1/4" THK TEMPERED SAFETY GLASS.
3. GC SHALL FIELD VERIFY CONDITIONS AND PREPARE SHOP DRAWINGS FOR ARCHITECT REVIEW & APPROVAL PRIOR TO FABRICATION.
4. ALL SAFETY GLAZING SHALL BE COMPLIANT WITH CPSC 16 CFR OR ANSI Z97.1. FINAL APPROVAL OF ALL LOCATIONS REQUIRED SUBJECT TO THE CODE OFFICIAL.

NOTES:

IT IS A VIOLATION OF THE LAW FOR ANY PERSON, UNLESS ACTING UNDER THE DIRECTION OF A LICENSED ARCHITECT OR ENGINEER, TO ALTER AN ITEM IN ANY WAY, IF AN ITEM BEARING THE SEAL OF AN ARCHITECT OR ENGINEER IS ALTERED, THE ALTERING ARCHITECT OR ENGINEER SHALL AFFIX TO HIS ITEM THE SEAL AND THE NOTATION ALTERED BY FOLLOWED BY HIS SIGNATURE AND THE DATE OF SUCH ALTERATION, AND A SPECIFIC DESCRIPTION OF THE ALTERATION.

DO NOT SCALE DRAWINGS. WRITTEN DIMENSIONS GOVERN.

© JOSEPH G THOMPSON ARCHITECT, PLLC. ALL RIGHTS RESERVED.



SEAL
Joseph G. Thompson, RA
New York State License #036057

PEEKSKILL FIREHOUSE KITCHEN INCUBATOR

Peekskill Facilities Development Corporation (Owner)
EDA PROJECT #01-01-15338
701 Washington Street, Peekskill, New York 10566
S-B-L: 32-20-9-1
City of Peekskill - Westchester County

FOR CONTRACTOR BID

Date: May 7, 2025

Revisions:

1	
2	
3	
4	
5	