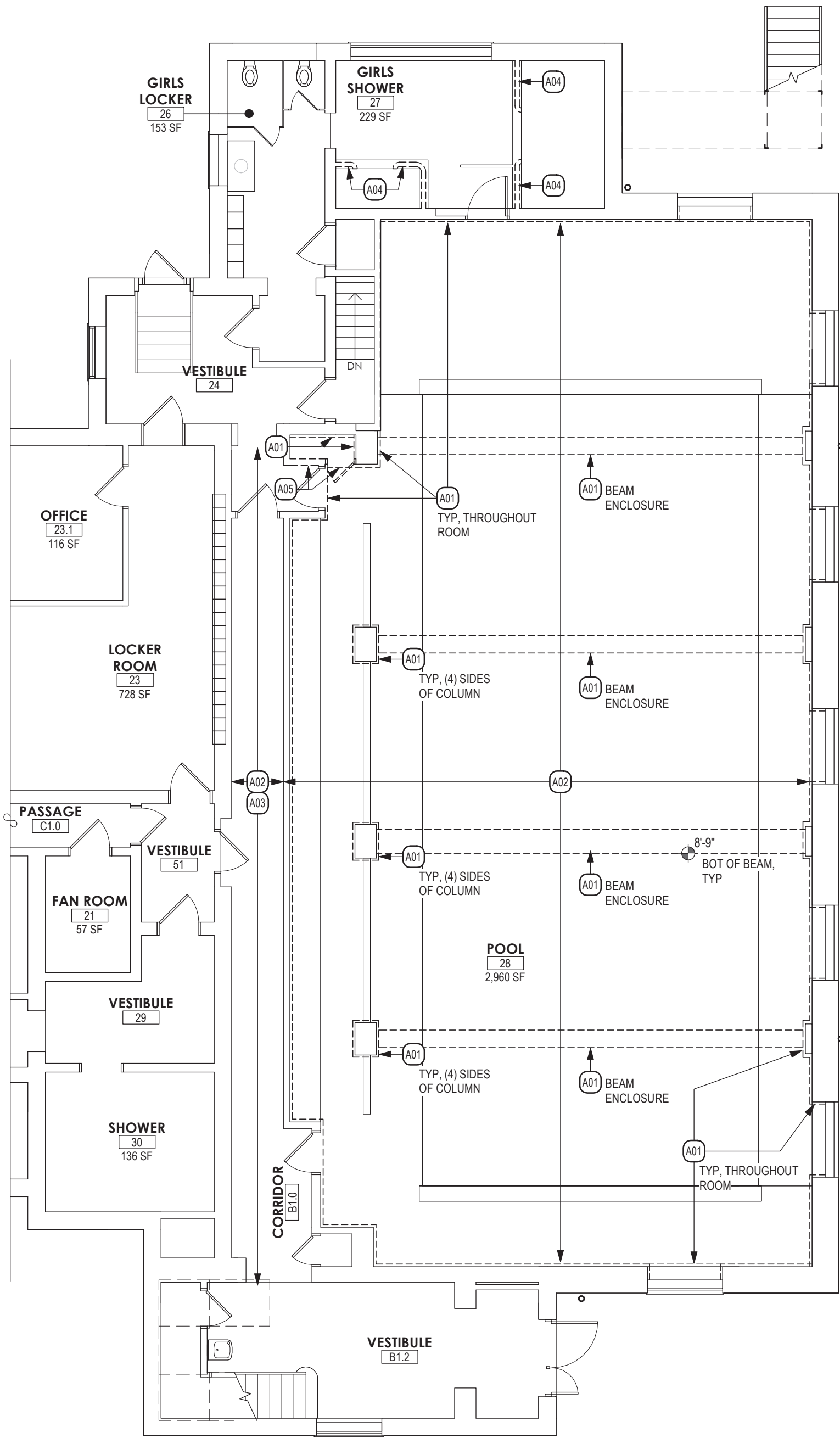


1 LOWER LEVEL  
ABATEMENT PLAN

SCALE: 1/8" = 1'-0"



KEY PLAN

NO SCALE



ABATEMENT KEYNOTES

- A01 REMOVE EXISTING TAN STUCCO (PAINTED GREEN) APPLIED TO WALL OR BEAM COMPLETE TO SUBSTRATE AND DISPOSE OF AS ASBESTOS-CONTAINING BUILDING MATERIAL. STUCCO IS APPLIED TO WALL ABOVE TILE WAINSCOT FROM APPROX. 4'-0" AFF TO CEILING AT APPROX. 10'-2"
- A02 REMOVE EXISTING TAN STUCCO CEILING SYSTEM (PAINTED GREEN) COMPLETE, INCLUDING ALL HANGERS AND SUPPORTS, AND DISPOSE OF AS ASBESTOS-CONTAINING BUILDING MATERIAL. CEILING IS APPROX. 10'-2" AFF
- A03 REMOVE EXISTING SUSPENDED CEILING SYSTEM COMPLETE AS REQUIRED TO ABATE CONCEALED STUCCO CEILING ABOVE
- A04 REMOVE ALL EXISTING GLASS BRICK AND MORTAR COMPLETE AND DISPOSE OF AS ASBESTOS-CONTAINING BUILDING MATERIAL
- A05 REMOVE DOOR AND WALL AS REQUIRED TO REMOVE ALL STUCCO

GENERAL ABATEMENT PLAN NOTES

1. ALL WORK SHALL BE DONE IN ACCORDANCE WITH INDUSTRIAL CODE RULE #56 AND SPECIFICATIONS. ALL MATERIALS ARE TO BE REMOVED AND DISPOSED OF IN ACCORDANCE WITH INDUSTRIAL CODE RULE #56.
2. DISPOSE OF ALL MATERIALS TO BE REMOVED AS ASBESTOS CONTAINING BUILDING MATERIAL (ACBM), UNLESS NOTED OTHERWISE.
3. EXACT EXTENTS AND LOCATIONS OF REMOVALS SHALL BE DETERMINED IN THE FIELD. COORDINATE ABATEMENT WITH OTHER PRIME CONTRACTORS AS REQUIRED.
4. FIELD VERIFY DIMENSIONS AND EXISTING CONDITIONS PRIOR TO PROCEEDING WITH WORK. NOTIFY ARCHITECT OF ANY DISCREPANCIES..
5. REFER TO THE HAZARDOUS MATERIALS SURVEY IN THE SPECIFICATIONS FOR QUANTITIES, LOCATIONS, AND ADDITIONAL LOCATIONS.
6. ASBESTOS CONTRACTOR IS RESPONSIBLE FOR TYING UP ALL DEVICES TO EXISTING STRUCTURE ABOVE DURING REMOVALS INCLUDING ALL FIRE ALARM, SPEAKERS, EMERGENCY EXIT LIGHTING, SECURITY CAMERAS, ETC.
7. ABATEMENT TO INCLUDE COMPLETE REMOVALS OF ALL FASTENERS, ADHESIVES AND RELATED ITEMS COMPLETELY DOWN TO SUBSTRATE.
8. REMOVE PORTIONS OF CEILING, WALL, SOFFIT, ETC. AS REQUIRED FOR COMPLETE REMOVAL OF ACBM. DISPOSE OF AS ASBESTOS CONTAINING BUILDING MATERIALS UNLESS NOTED OTHERWISE. SEE DEMOLITION PLANS FOR EXTENT OF ITEMS THAT ARE EXISTING TO REMAIN, OR SCHEDULED FOR DEMOLITION. PATCH ALL SURFACES THAT ARE EXISTING TO REMAIN TO MATCH EXISTING ADJACENT, OR AS REQUIRED FOR INSTALLATION OF NEW WORK.
9. KEYNOTES AND HATCHES INDICATE APPROXIMATE AREAS, ELEVATIONS, ETC OF SPECIFIC ITEMS TO BE REMOVED. THE INTENT IS FOR ALL OF THE TYPE OF ACBM MATERIAL IDENTIFIED WITH A KEYNOTE TO BE REMOVED IN THE ENTIRE SPACE, EVEN IF SAID MATERIAL FALLS OUTSIDE OF THE HATCHED AREA OR IS OF A DIFFERENT SIZE OR ELEVATION INDICATED.

SID NUMBERS: 66-15-001-0-009-013

Revision: 05/21/2025

APR: 2226.2A

Drawn by: SL

Date: October 11, 2024

Drawn by: SL

Seal

Consultant:

Seal

Seal

Seal

Seal

Seal

Seal

Seal

Seal

Seal

Seal

Seal

Seal

Seal

Seal

Seal

Seal

Seal

Seal

Seal

Seal

Seal

Seal

Seal

Seal

Seal

Seal

Seal

Seal

Seal

Seal

Seal

Seal

Seal

Seal

Seal

Seal

Seal

Seal

Seal

Seal

Seal

Seal

Seal

Seal

Seal

Seal

Seal

Seal

Seal

Seal

Seal

Seal

Seal

Seal

Seal

Seal

Seal

Seal

Seal

Seal

Seal

Seal

Seal

Seal

Seal

Seal

Seal

Seal

Seal

Seal

Seal

Seal

Seal

Seal

Seal

Seal

Seal

Seal

Seal

Seal

Seal

Seal

Seal

Seal

Seal

Seal

Seal

Seal

Seal

Seal

Seal

Seal

Seal

Seal

Seal

Seal

Seal

Seal

Seal

Seal

Seal

Seal

Seal

Seal

Seal

Seal

Seal

Seal

Seal

Seal

Seal

Seal

Seal

Seal

Seal

Seal

Seal

Seal

Seal

Seal

Seal

Seal

Seal

Seal

Seal

Seal

Seal

Seal

Seal

Seal

Seal

Seal

Seal

Seal

Seal

Seal

Seal

Seal

Seal

Seal

Seal

Seal

Seal

Seal

Seal

Seal

Seal

Seal

Seal

Seal

Seal

Seal

Seal

Seal

Seal

Seal

Seal

Seal

Seal

Seal

Seal

Seal

Seal

Seal

Seal

Seal

Seal

Seal

Seal

Seal

Seal

Seal

Seal

Seal

Seal

Seal

Seal

Seal

Seal

Seal

Seal

Seal

Seal

Seal

Seal

Seal

Seal

Seal

Seal

Seal

Seal

Seal

Seal

Seal

Seal

Seal

Seal

Seal

Seal

Seal

Seal

Seal

Seal

Seal

Seal

Seal

Seal

Seal

Seal

Seal

Seal

Seal

Seal

Seal

Seal

Seal

Seal

Seal

Seal

Seal

Seal

Seal

Seal

Seal

Seal

Seal

Seal

Seal

Seal

Seal

Seal

Seal

Seal

Seal

Seal

Seal

Seal

Seal

Seal

Seal

Seal

Seal

Seal

Seal

Seal

Seal

Seal

Seal

Seal

Seal

Seal

Seal

Seal

Seal

Seal

Seal

Seal

Seal

Seal

Seal

Seal

Seal

Seal

Seal

Seal

Seal

Seal

Seal

Seal

Seal

Seal

Seal

Seal

Seal

Seal

Seal

Seal

Seal

Seal

Seal