

1 PLUMBING SECOND FLOOR SANITARY/STORM PLAN
3/32" = 1'-0"

Owne

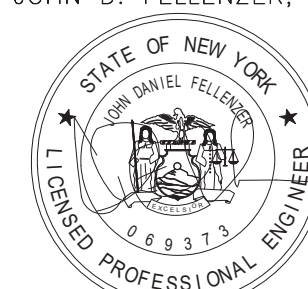
Civil & MEP Engineer

Structural Engineer

Food Service Consultant:

Construction Manager

JOHN D. FELLENER, P.F.



NY PROFESSIONAL ENGINEER
NO. 069373-1
ISSUED 1992; EXP. 9/25

It is a violation of Title VIII, Article 147 of NYS Education Law for any person, unless acting under the direction of a licensed architect, to alter any item on this document in any way. Any licensee who alters this document is required by law to affix his or her seal and the notation "altered by" followed by his or her signature and a specific description of the alterations made.

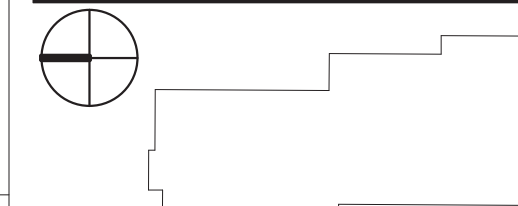


**ROCKLAND BOCES
P-TECH C-TEC
BUILDING**

SED #: 50-90-00-00-0-044-001

65 PARROT RD,
WEST NYACK, NY 10994

KEY PLAN



REVISIONS

[illegible]

ISSUED: BID SET ISSUANCE

DATE: 6/30/2025

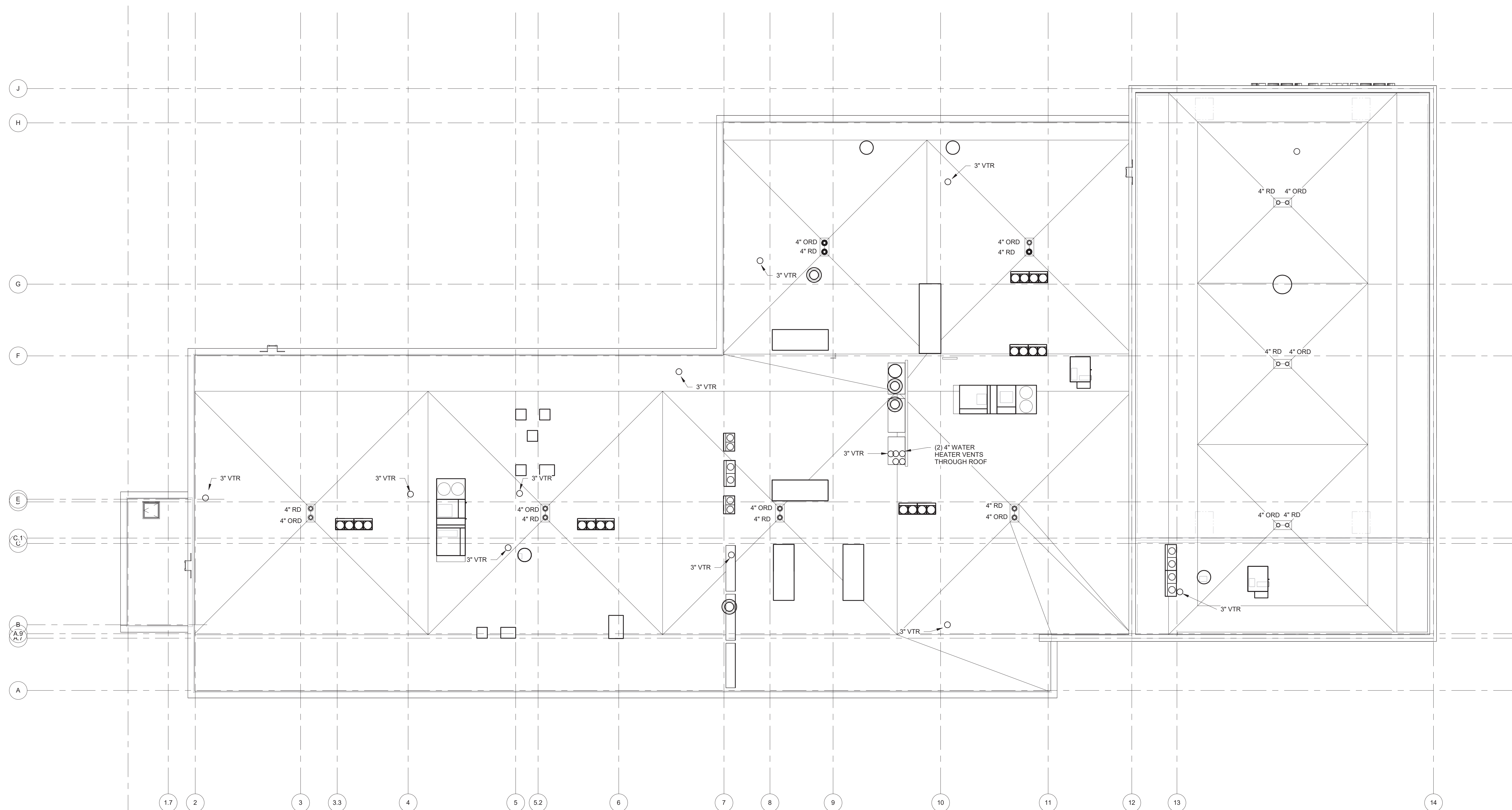
SCALE: 3/32" = 1'-0"

SHEET NAME:
PLUMBING ROOF
SANITARY PLAN

SHEET NUMBER:

P-103

BID SET



1 PLUMBING ROOF SANITARY PLAN
3/32" = 1'-0"

Owne

Civil & MEP Engineer

Fellenzer Engineering

Structural Engineer

Food Service Consultant:

Construction Manager

JOHN D. FULLENZER, P.E.



NY PROFESSIONAL ENGINEER
NO. 069373-1
ISSUED 1992; EXP. 9/25

It is a violation of Title VIII, Article 147 of NYS Education Law for any person, unless acting under the direction of a licensed architect, to alter any item on this document in any way. Any licensee who alters this document is required by law to affix his or her seal and the notation "altered by" followed by his or her signature and a specific description of the alterations made.

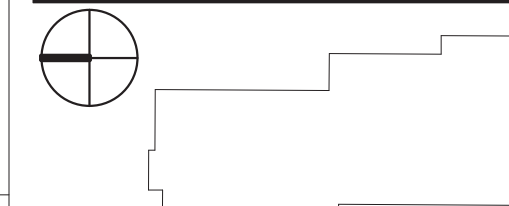


**ROCKLAND BOCES
P-TECH C-TEC
BUILDING**

SED #: 50-90-00-00-0-044-001

65 PARROT RD,
WEST NYACK, NY 10994

KEY PLAN



REVISIONS

[illegible]

ISSUED: BID SET ISSUANCE

DATE: 6/30/2025

SCALE: 3/32" = 1'-0"

SHEET NAME:
PLUMBING BELOW SLAB
DOMESTIC PLAN

SHEET NUMBER:

P-200

BID SET

GENERAL NOTES

1. PROVIDE CONTINUOUS CORROSION PROTECTION PIPING ENCASEMENT FOR ALL UNDERGROUND PIPING.
2. COORDINATE ALL FINAL KITCHEN CONNECTIONS WITH THE FOODSERVICE CONTRACTOR.
3. WELD ALL NONE ACCESSABLE GAS PIPING
4. PROVIDE DOUBLE WALL PIPING ON ALL GAS PIPING IN CORRIDOR

GENERAL NOTES:

1. WELD ALL NONE ACCESSABLE GAS PAPIING
2. PROVIDE DOUBLE WALL PIPING ON ALL GAS PIPING IN CORRIDOR

Owne

Civil & MEP Engineer

Structural Engineer

Food Service Consultant:

Construction Manager

JOHN D. FELLENER, P.E.



NY PROFESSIONAL ENGINEER
NO. 069373-1
ISSUED 1992; EXP. 9/25

It is a violation of Title VIII, Article 147 of NYS Education Law for any person, unless acting under the direction of a licensed architect, to alter any item on this document in any way. Any licensee who alters this document is required by law to affix his or her seal and the notation "altered by" followed by his or her signature and a specific description of the alterations made.

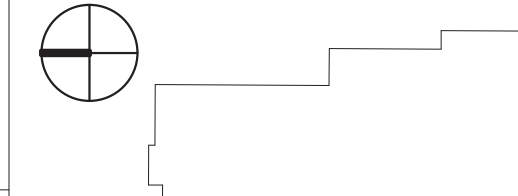


**ROCKLAND BOCES
P-TECH C-TEC
BUILDING**

SED #: 50-90-00-00-0-044-001

65 PARROT RD,
WEST NYACK, NY 10994

KEY PLAN



REVISIONS

[illegible]

ISSUED: BID SET ISSUANCE

DATE: 6/30/2025

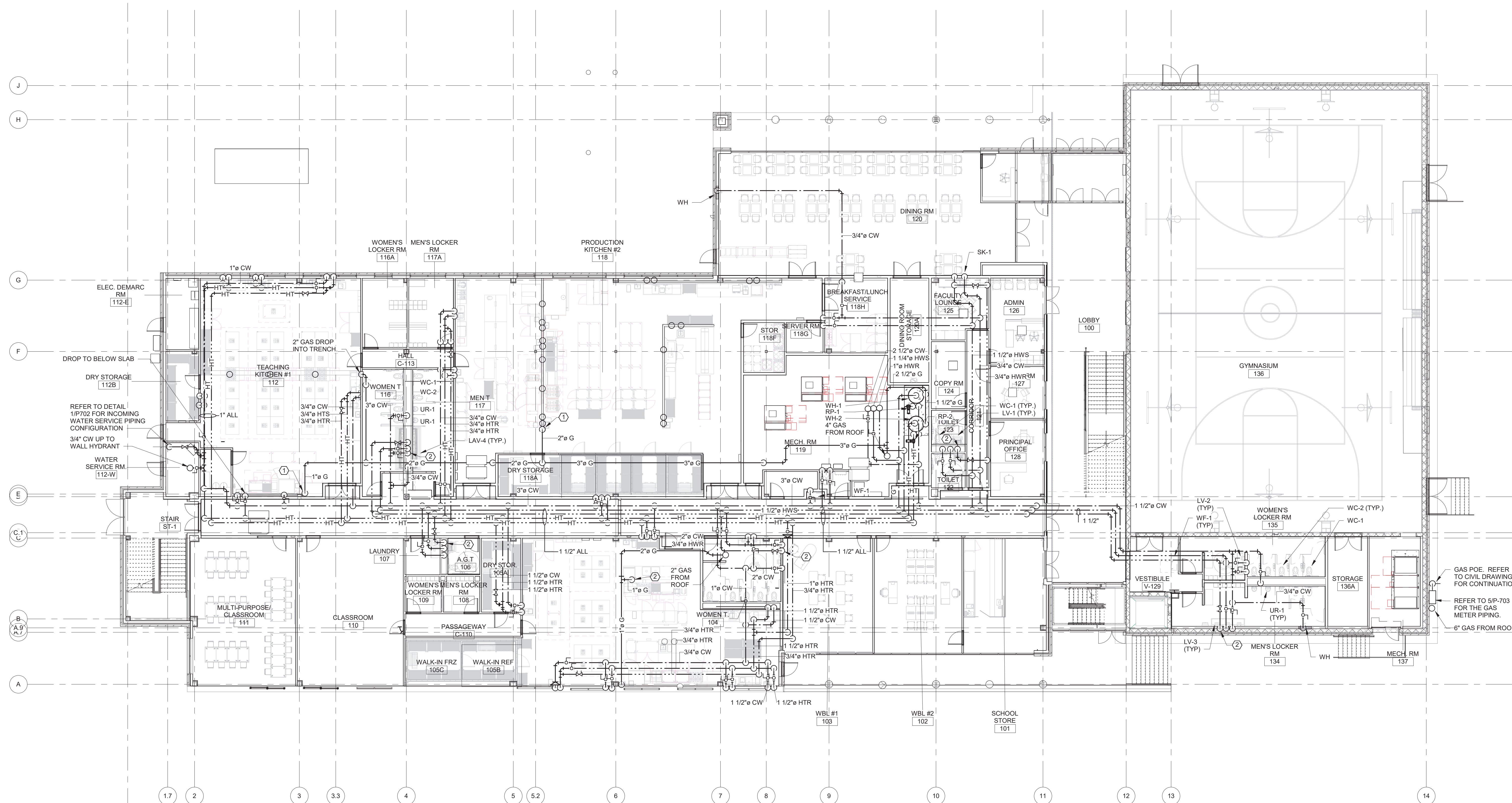
SCALE: 3/32" = 1'-0"

SHEET NAME:
PLUMBING FIRST FLOOR
DOMESTIC PLAN

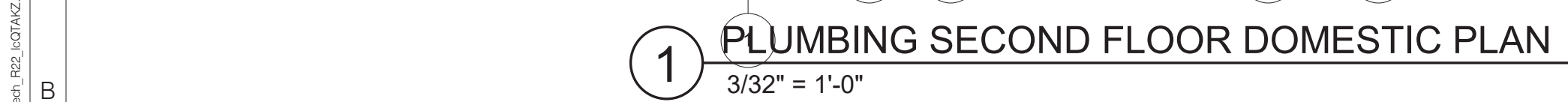
SHEET NUMBER:

P-201

BID SET



1 PLUMBING FIRST FLOOR DOMESTIC PLAN
3/32" = 1'-0"



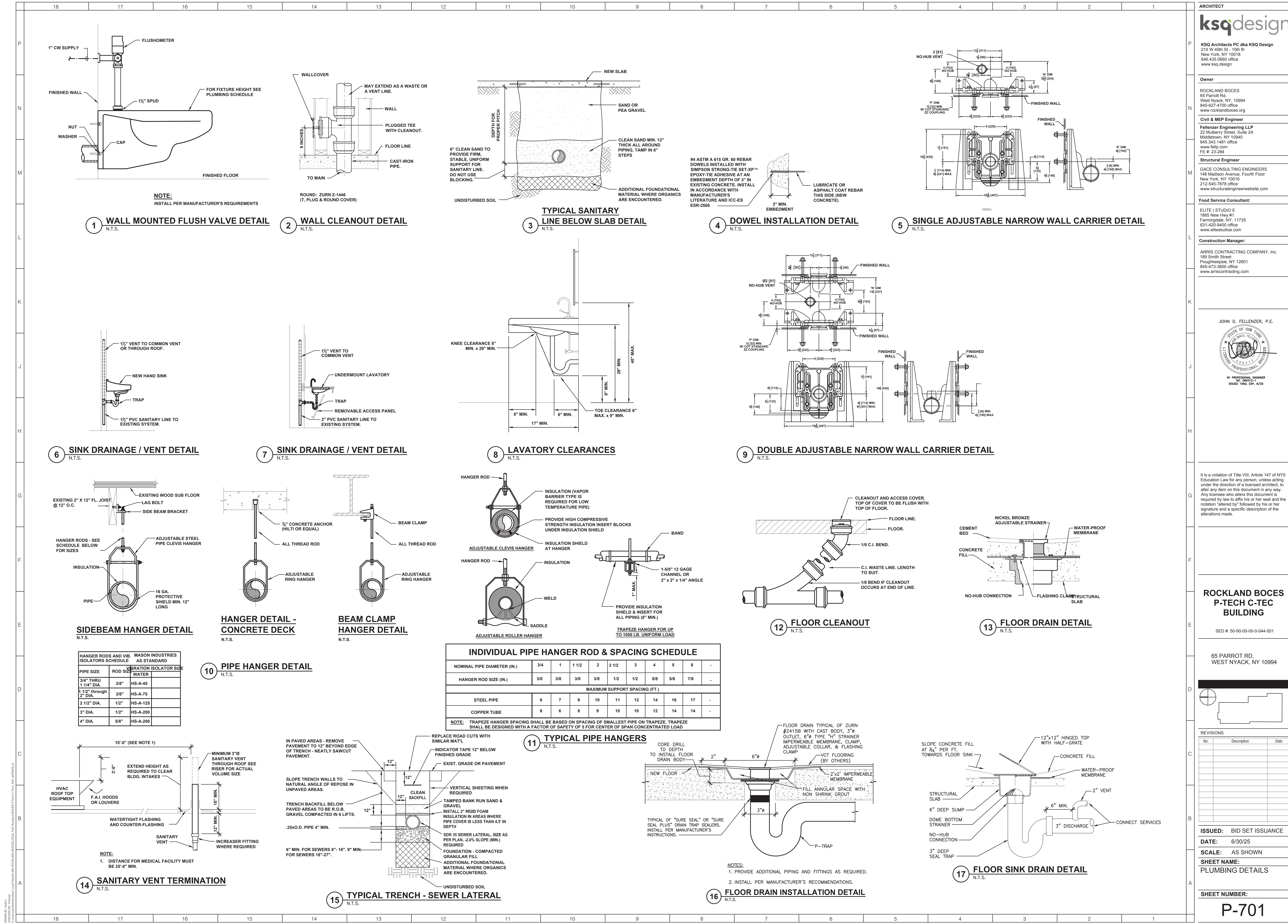
1 CONNECT HOT WATER RETURN WITHIN 6" OF THE LAVATORY

P-202

BID SET

P-203

BID SET



ARCHITECT
ksqdesign
KSQ Architects PC dba KSQ Design
215 W 40th St - 15th flr
New York, NY 10018
646.435.0600 office
www.ksqdesign.com

Owner
ROCKLAND BOCES
65 Parrot Rd.
West Nyack, NY, 10994
845-627-4700 office
www.rocklandboces.org

Civil & MEP Engineer
Fellenzer Engineering LLP
22 Mulberry Street, Suite 2A
Middletown, NY 10940
845.343.1481 office
www.fellp.com
FE # 23-284

Structural Engineer
GACE CONSULTING ENGINEERS
148 Madison Avenue, Fourth Floor
New York, NY 10016
212-545-7878 office
www.structuralengineerwebsite.com

Food Service Consultant:
ELITE | STUDIO E
1865 New Hwy #1
Farmingdale, NY 11735
631-420-9400 office
www.elitestudioe.com

Construction Manager:
ARRIS CONTRACTING COMPANY, Inc.
189 Smith Street
Poughkeepsie, NY 12601
845-473-3600 office
www.arrriscontracting.com

JOHN D. FELLEZNER, P.E.
STATE OF NEW YORK
LICENSED PROFESSIONAL ENGINEER
NO. 08632-1
ISSUED 1992; EXP. 6/25

It is a violation of Title VIII, Article 147 of NYS Education Law for any person, unless acting under the direction of a licensed architect, to alter any item on this document in any way. Any licensee who alters this document is required by law to affix his or her seal and the notation "altered by" followed by his or her signature and a specific description of the alterations made.

**ROCKLAND BOCES
P-TECH C-TEC
BUILDING**
SED #: 50-90-00-0-044-001

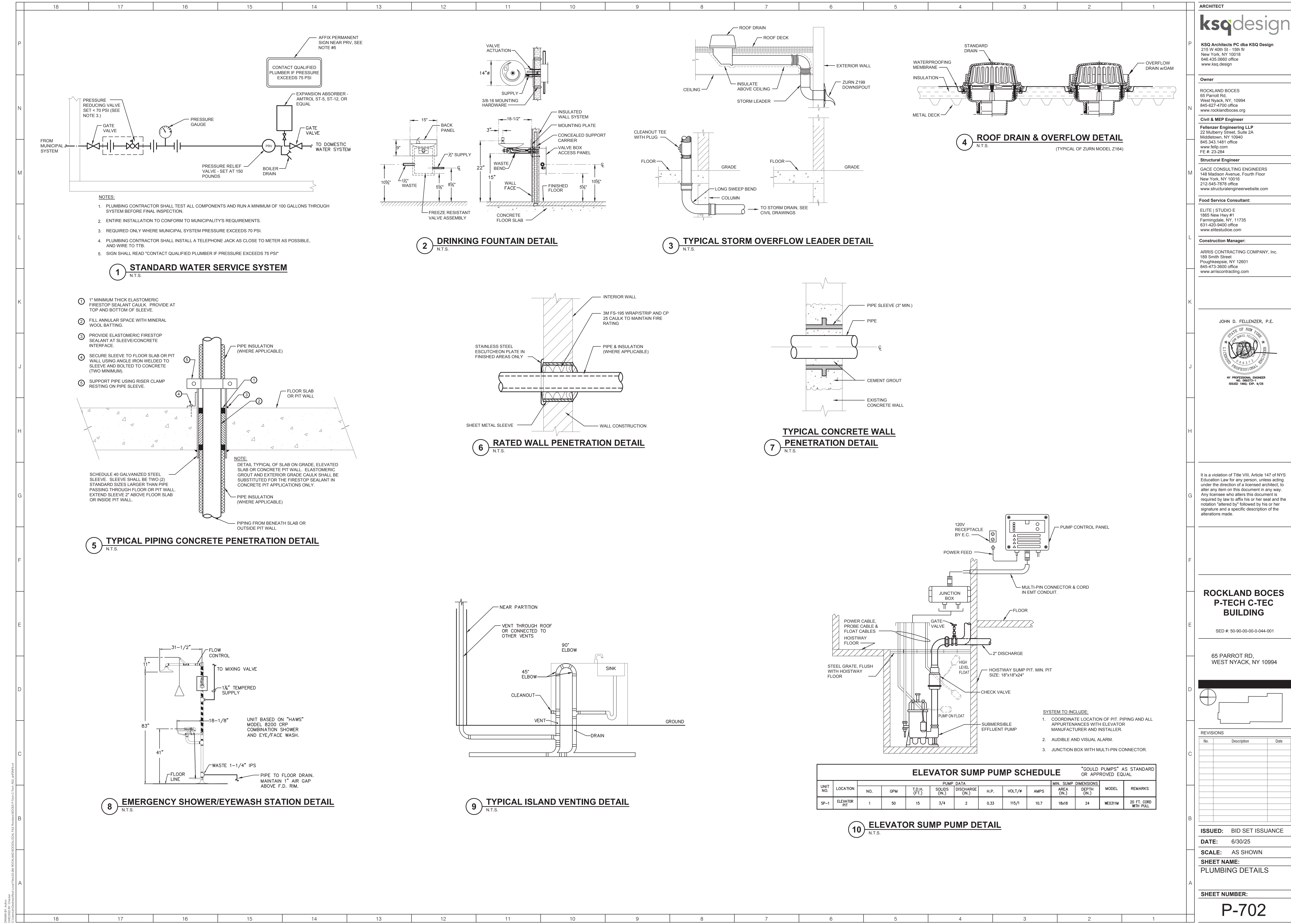
65 PARROT RD.,
WEST NYACK, NY 10994

REVISIONS

No.	Description	Date

ISSUED: BID SET ISSUANCE
DATE: 6/30/25
SCALE: AS SHOWN
SHEET NAME: PLUMBING DETAILS
SHEET NUMBER:

P-701



ARCHITECT

ksqdesign

KSQ Architects PC dba KSQ Design
215 W 40th St - 15th flr
New York, NY 10018
646 435 0600 office
www.ksqdesign.com

Owner

ROCKLAND BOCES
65 Parrot Rd.
West Nyack, NY, 10994
845-627-4700 office
www.rocklandboces.org

Civil & MEP Engineer

Fellenzer Engineering LLP
22 Mulberry Street, Suite 2A
Middletown, NY 10940
845.343.1481 office
www.fellp.com
FE # 23-284

Structural Engineer

GACE CONSULTING ENGINEERS
148 Madison Avenue, Fourth Floor
New York, NY 10016
212-545-7878 office
www.structuralengineerswebsite.com

Food Service Consultant:

ELITE | STUDIO E
1865 New Hwy #1
Farmingdale, NY, 11735
631-420-9400 office
www.elitestudioe.com

Construction Manager:

ARRIS CONTRACTING COMPANY, Inc.
189 Smith Street
Poughkeepsie, NY 12601
845-473-3600 office
www.arrriscontracting.com

JOHN D. FELLENZER, P.E.

It is a violation of Title VIII, Article 147 of NYS Education Law for any person, unless acting under the direction of a licensed architect, to alter any item on this document in any way. Any licensee who alters this document is required by law to affix his or her seal and the notation "altered by" followed by his or her signature and a specific description of the alterations made.

ROCKLAND BOCES
P-TECH C-TEC
BUILDING

SED #: 50-90-00-00-0-044-001

65 PARROT RD.
WEST NYACK, NY 10994

REVISIONS

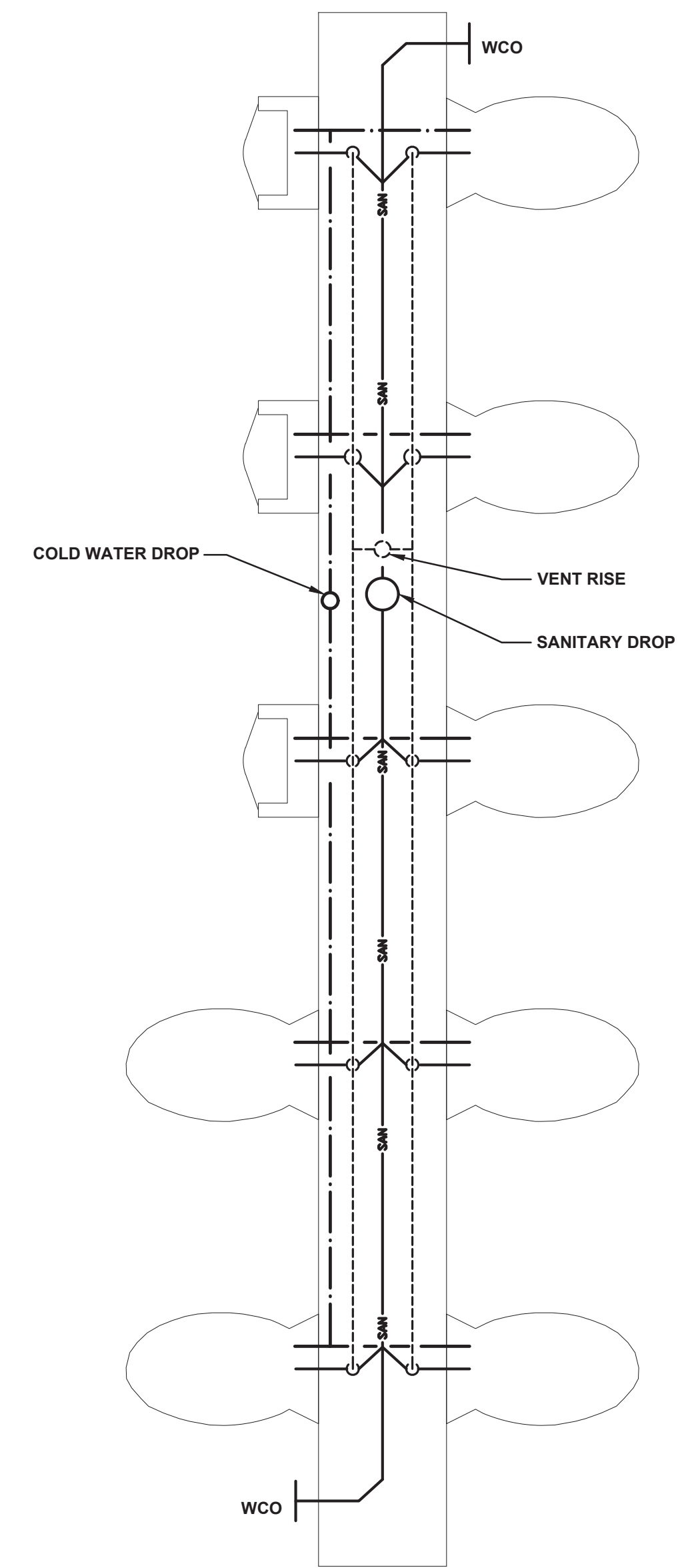
No.	Description	Date

ISSUED: BID SET ISSUANCE
DATE: 6/30/25
SCALE: AS SHOWN
SHEET NAME:
PLUMBING DETAILS
SHEET NUMBER:

P-702

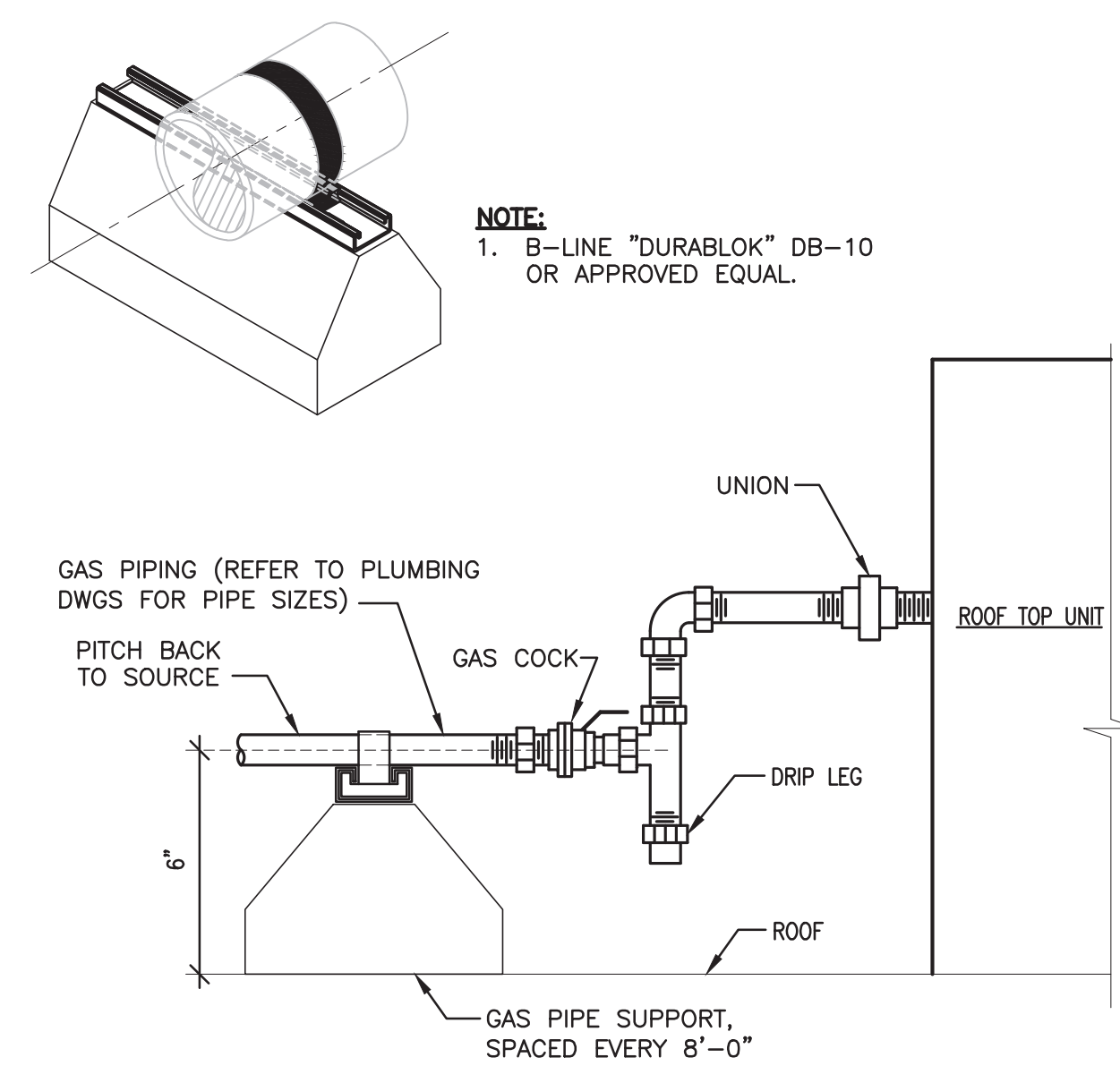
PROJECT NUMBER: ### COPYRIGHT © 2022 KSQ ARCHITECTS, PC

BID SET



WATER HEATER PIPING SCHEMATIC

1. ALL PIPING TO BE NEW PIPING, SIZE AS SHOWN.
2. ALL WORK IS TO BE DONE IN ACCORDANCE TO N.Y.S. AND LOCAL BUILDING CODE.
3. WATER HEATERS SHALL BE ASME RATED & CERTIFIED.



ROOF TOP HVAC GAS SERVICE DETAIL

Diagram illustrating the components and flow of a gas service line assembly:

- GAS PRESSURE REGULATOR**: Inlet pressure field, verify outlet pressure.
- PRESSURE GAUGE (TYP.)**: Two-piece full port ball valve (TYP.).
- ROTARY GAS METER**.
- SCHEDULE 40 BLACK IRON PIPE, PAINT AS SPECIFIED.**: TO BUILDING.
- PLUGGED Y-STRAINER**: 1200 MESH.
- SEDIMENT TRAP**: (DIRT LEG) 18" LONG WITH SCREWED CAP.
- GAS FLOW**: Indicated by an arrow pointing right.
- PAINT EXPOSED GAS PIPE PER SPECIFICATIONS**.
- GRADE**: Indicated by a line with a downward arrow.

(F) GAS METER DETAIL

PUMPED OR GRAVITY FED CONDENSATE FROM A/C UNITS FURNISHED & INSTALLED BY HVAC CONTRACTOR.

PITCH DOWN TOWARD DRAIN

CLEAN OUT

1-1/2" DWV FROM LAV.

1" X 1/2"

1 1/2" DIA. X 4" DIA. X 4 1/2" HIGH FUNNEL.

1 1/2" COPPER FITTINGS FIELD FABRICATE - MAKE CONNECTION BELOW LAV.

FUNNEL DRAIN DETAIL

TYPICAL LAVATORY/SINK WET WALL PIPING DETAIL

P-703

[illegible]